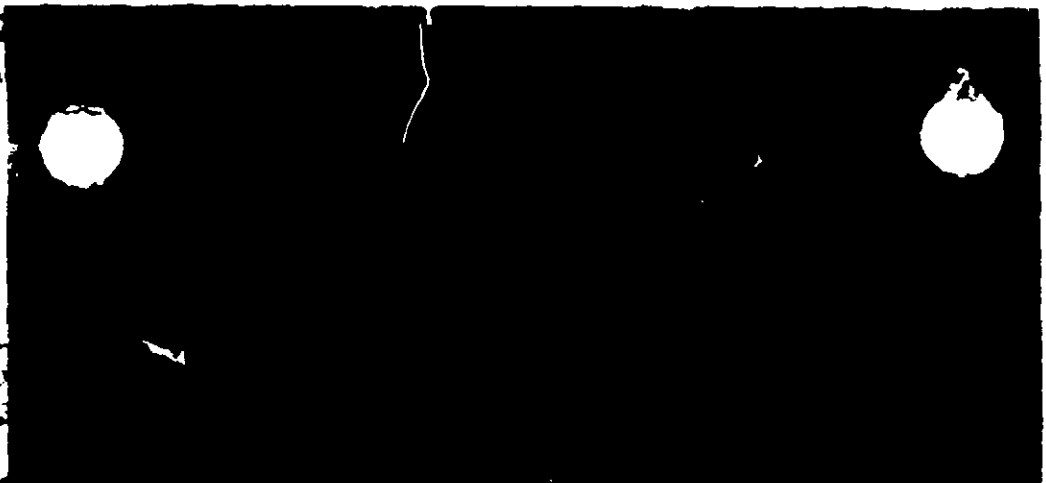


[6662-7]

ACCEPT



Small Flying Insects

Directions for use with space spraying devices:

1. Close all doors, windows and other spaces through which the fog may escape.
2. Fog space treated using one quart DALCO ROACH SPRAY for each 12,500 cubic feet of space.
3. Allow fog to remain in closed room for a period of not less than one hour; longer where possible.
4. Air out room, sweep up and destroy fallen insects.
5. Wash and rinse food and beverage equipment contacted by fog, as in accord with good housekeeping procedure, before using.
6. Food and Beverage products in spaces treated should be covered prior to treatment.

IMPORTANT: Effective control by space spraying requires treatment as frequently as conditions of premises necessitate. Frequency of treatment must be based on prevailing conditions, such as, initial infestation, type and amount of product attracting various insects, prevailing temperature, humidity and amount of incoming traffic.

# ROACH SPRAY

Dalco Roach Spray is an insecticide, when used as directed, is suitable for use in the food industry, and possesses the potency for the effective control of the most hardy insect pests.

This is a multi-purpose insecticide designed for use in all kinds of food plants, especially those under stringent inspection, industrial plants, warehouses, institutions and all establishments where the use of an extremely effective insecticide is necessary and desired.

For use in Dairies, Creameries and Cheese Plants, Beverage Plants and Breweries, Meat Packing, Sausage and Poultry plants, Candy and Nut plants, Granaries and Bakeries, Flour Mills, Canneries and Pickle plants, and all kinds of Industrial plants, Institutions, etc.

For control of the following insects: Roaches, Water Bugs, Silver Fish, Ants, Flies, Fleas, Mosquitoes, Vinegar and Fruit Flies, Gnats, accessible Flour Weevils, Grain Beetles, Meal Moths, Chocolate Moths, Cheese Skippers and Mites, Lesser and Larger Grain Borer, Rice Weevil, Cadelles, Angoumois Grain Moth, Indian Meal Moth, Mediterranean Flour Moths, Spider Beetle, Flat Grain Beetle, Saw-Toothed Grain Beetle, Cigarette Beetle, Ham Mite, Dried Fruit Beetles, Carpet Beetle, Ticks and certain other flying and crawling insects.

ACTIVE INGREDIENTS.....100%

- Petroleum Distillates
- Piperonyl Butoxide-Technical\*
- Pyrethrins

\*Consists of (Butylcarbityl) (6-propylpiperonyl) ether and related compounds.

**CAUTION: Keep out of reach of children. Harmful if swallowed. ~~Combustible mixture. Do not spray, pour, or spill near open flame.~~**

Directions for spot spraying with hand or electric sprayers:

1. **Roaches, Water Bugs, Silver Fish and spiders:** Forcefully and thoroughly spray inside all cracks and crevices where insects appear. Especially spray into crevices where moisture collects, such as drains, water pipes and sinks. Mouldings and wood-work should also be treated when necessary. Wherever possible, spray directly on insects, as they emerge from hiding places which are being sprayed. Repeat treatment as required.
2. **Flies, Fruit Flies and Mosquitoes:** Close all doors and windows. Direct spray towards ceiling and fill entire room with fog. Keep room closed for ten to twenty minutes. Sweep up and destroy fallen insects. Repeat treatment as frequently as required.
3. **For all accessible stages of Granary insects herein stated:** Close all doors and windows of area treated. Spray floors, side walls, corners and cross beams. Stack goods with as much space between piles as possible, so that the operator has room to pass and spray over, under and between all stacked merchandise. Grain bins should be emptied as frequently as possible so that walls, floors and corners, etc. are covered with spray. Spray liberally after hot period when migration starts. Spray weekly in warm weather and at least monthly during winter.
4. **Fleas and Ticks:** Forcefully spray walls, floors, ceilings and into cracks and crevices of kennels and coops, as well as batteries. Repeat as neces-