

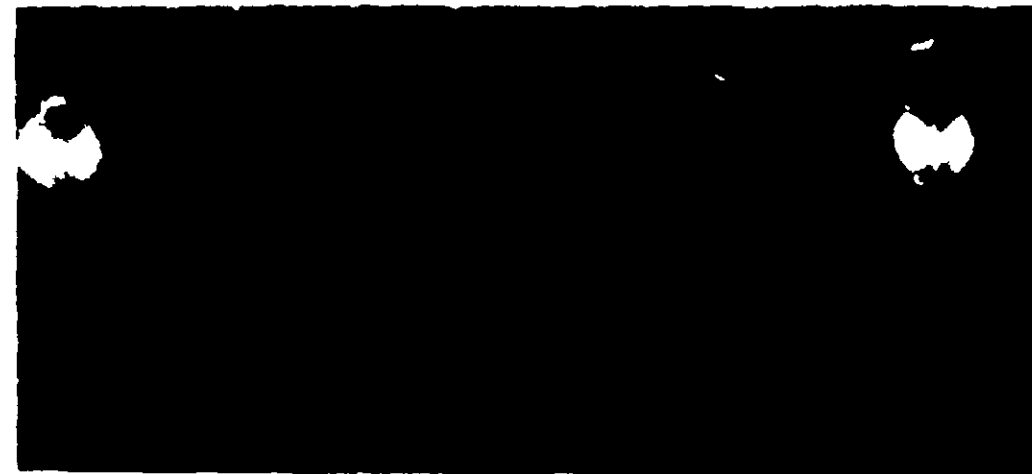
[6662-4]

Small Flying Insects

Directions for use with space spraying devices:

1. Close all doors, windows and other spaces through which the fog may escape.
2. Fog space treated, using one ounce DALCO CONCENTRATE for each 1,000 cubic feet of space.
3. Allow fog to remain in closed room for a period of not less than one hour; longer where possible.
4. Air out room, sweep up and destroy fallen insects.
5. Wash and rinse food and beverage equipment contacted by fog, as in accord with good housekeeping procedure, before using.
6. Food and Beverage products in spaces treated should be covered prior to treatment.
7. In food processing plants use DALCO CONCENTRATE only when plant is not in operation.

IMPORTANT: Effective control by space spraying requires treatment as frequently as conditions of premises necessitate. Frequency of treatment must be based on prevailing conditions, such as, initial infestation, type and amount of product attracting various insects, prevailing temperature, humidity, and amount of



CCEP  
APR 28 1967  
FEDERAL BUREAU OF INVESTIGATION  
U.S. DEPARTMENT OF JUSTICE

# CONCENTRATE

Dalco Concentrate has been developed with the aid of some of the leading entomologists in the country to produce a vastly superior insecticide to satisfy the demands of all types of food processing and manufacturing plants. This is an exceptionally concentrated and potent insecticide, adapted especially for use in aerosol producing equipment, fogging devices, thermal units as well as electric and hand spraying equipment. Due to its high concentration, requiring the use of less material and time per job, this proves to be, in all reality an extremely economical product. For use in all types of food processing plants such as Canneries, Producers of Milk and Dairy Products, Beverage and Brewery plants, Meat Packing Industry and Sausage Industry, Baking and Milling Industry, Nut Processors as well as Industrial Plants, Cafeterias, Institutions, Warehouses and all places where effective insect control is desirable. Harmless to equipment and utensils. Will not impart any color, odor or taste to products and equipment when used as directed. Kills Roaches, Water Bugs, Silver Fish, Flies, Spiders, Vinegar and Fruit Flies, Fleas, Gnats, Ants, Carpet Beetles, accessible Grain Beetles, Flour Weevils, Meal Moths, Rice Weevils, Cadelles, Flat Grain Beetles and Chocolate Moths when used as directed.

ACTIVE INGREDIENTS.....100%  
Petroleum Distillates  
Piperonyl Butoxide-Technical\*  
Pyrethrins

\*Consists of (Butylcarbityl) (6-propylpiperonyl) ether and related compounds

**CAUTION: Keep out of reach of children. Harmful if swallowed.**

Directions for Contact spraying with hand or electric sprayer:

1. **Roaches, Water-Bugs, Silver Fish and Spiders:** Forcefully and thoroughly spray inside all cracks and crevices where moisture collects, such as drains, water pipes and sinks. Mouldings and woodwork should also be treated when necessary. Wherever possible, spray directly onto insects as they emerge from hiding places which are being sprayed. Repeat treatment as often as necessary.
2. **For all accessible stages of Granary insects, such as Flour Beetles, Granary Weevils, Saw-Toothed Grain Beetles, Lesser Grain Borer, Larger Grain Borer, Angoumois Grain Moth, Mediterranean Flour Moth, Indian Meal Moth:** Close all doors and windows of area treated. Spray floors, side walls, corners, and cross beams. Stack goods with as much space between stacked merchandise. Grain bins should be emptied as frequently as possible so that walls, floors, corners, etc., are covered with thick spray. Spray weekly in warm weather and at least monthly during winter. Spray liberally after hot periods when migrations start.
3. **Flies, Fruit and Vinegar Flies. Mosquitoes:** Close doors and windows, direct spray toward ceiling and fill entire room with fog. Keep room closed for ten to twenty minutes. Sweep up and destroy fallen insects. Repeat treatment as often as required.
4. **Ants, Fleas, Carpet Beetles:** Spray floors, rugs and side walls for several feet up from the floor. Also spray animal quarters. Do not spray ani-