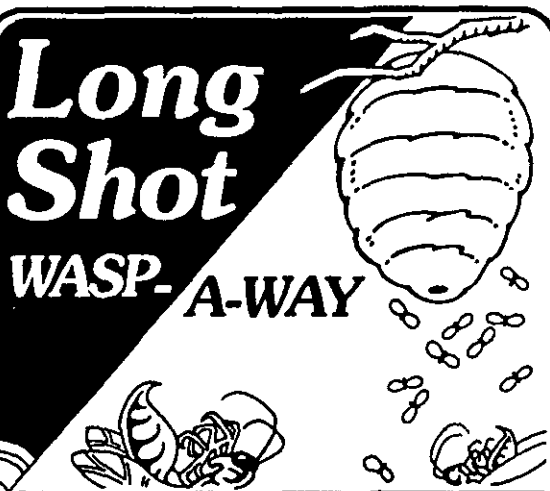


USE THE "MAGIC TOUCH"

Pro-Magic

formulated for professionals!



This product can be used both indoors (attics and other places where nests are built) and outdoors on bee, hornet, wasp and yellowjacket nests.

SHOOTS A STREAM 10 FEET

DIELECTRIC BREAKDOWN VOLTAGE:
40.1 KV BY ASTM TEST METHOD D-877

ACTIVE INGREDIENTS:

Tetramethrin [(1-Cyclohexene-1,2-dicarboximide) methyl 2,2-dimethyl-3-(2-methylpropenyl) cyclopropanecarboxylate] ... 0.200%

3-Phenoxybenzyl-(1RS, 3RS; 1RS, 3SR)-2,2-dimethyl-3-(2-methylprop-1-enyl) cyclopropanecarboxylate 0.125%

*INERT INGREDIENTS: 99.675%
100.000%

*CONTAINS PETROLEUM DISTILLATE
MULTICIDE® - REGISTERED TRADEMARK OF MCLAUGHLIN GORMLEY KING CO.

EPA REG NO. 6658-47 EPA EST NO. 6658-MO-1

KEEP OUT OF REACH OF CHILDREN

CAUTION: FLAMMABLE.

Keep Away From Heat, Sparks and Open Flame.

See back panel for additional precautionary statements.

NET WT. 14 OZ. (397U)

PRECAUTIONARY STATEMENTS
HAZARDS TO HUMANS AND DOMESTIC ANIMALS

CAUTION:

FLAMMABLE. Harmful if swallowed. Contains Petroleum Distillate. Do not induce vomiting because of aspiration pneumonia hazard. Do not breathe vapors or spray mist. Causes slight eye irritation. Do not get in eyes. Avoid contact with skin and clothing. Wash contaminated skin promptly with soap and warm water. Avoid contamination of food and feedstuffs.

Do not use in commercial food processing, preparation, food storage or serving areas. In the home, all food processing surfaces and utensils should be covered during treatment, or thoroughly washed before use. Exposed food should be covered or removed.

Remove pets, birds, and cover fish aquariums before spraying.

STATEMENT OF PRACTICAL TREATMENT

IF SWALLOWED: Call a physician or Poison Control Center immediately. Do not induce vomiting because of aspiration pneumonia hazard.

IF IN EYES: Flush with plenty of water. Get medical attention if irritation persists.

IF ON SKIN OR CLOTHING: Remove contaminated clothing and wash before reuse. Wash skin with soap and warm water. Get medical attention if irritation persists.

IF INHALED: Remove victim to fresh air. Apply artificial respiration if indicated.

ENVIRONMENTAL HAZARDS

This product is toxic to fish and other aquatic invertebrates. Do not apply directly to water. Do not contaminate water by cleaning of equipment or disposal of wastes.

PHYSICAL OR CHEMICAL HAZARDS

FLAMMABLE. Keep away from heat, sparks and open flame. Contents under pressure. Do not puncture or incinerate container. Exposure to temperatures above 130°F may cause bursting.

DIRECTIONS FOR USE

It is a violation of Federal law to use this product in a manner inconsistent with its labeling.

For control of Bees, Hornets, Wasps and Yellowjackets: It is preferable to apply this product in the evening after all the insects have returned to the nest. Aim valve opening at the nest and depress button, continuing to spray until the nest is soaked with the spray. Repeat as necessary.

Do not use this unit in a cabinet or under a counter or table. Do not use this unit in an area less than 100 cubic feet.

STORAGE AND DISPOSAL.

STORAGE: Store in a cool dry area away from heat or open flame.
DISPOSAL: Replace cap and discard container in trash. Do not incinerate or puncture.

MANUFACTURED BY:

Midco Products Co., Inc.
Chesterfield, MO 63005-1005

ACCEPTED
'AUG 20 1998
Under the Federal Insecticide, Fungicide, and Rodenticide Act, as amended, for the pesticide registered under EPA Reg. No. 6658-47

PM 03 6658-47

8/20/98

17181

FOR LABEL ROOM

REV DATE: 4-1-98, 4-7-98

FILE#: A-PROMAGIC/PM-12

SENT TO

FOR APPROVAL

040812SLM

#12