



UNITED STATES ENVIRONMENTAL PROTECTION AGENCY
WASHINGTON, DC 20460

OFFICE OF CHEMICAL SAFETY
AND POLLUTION PREVENTION

February 9, 2023

Rebecca Mannion
Regulatory Agent for,
Bissell Homecare, Inc.
Electronic Transmittal: [rmannion@srcconsultants.com]

Subject: PRIA Label Amendment – To add a claim against Salmonella enterica
Product Name: Jesse
EPA Registration Number: 6297-2
Received Date: August 29, 2022
Action Case Number: 00389541

Dear Ms. Mannion:

The amended label referred to above, submitted in connection with registration under the Federal Insecticide, Fungicide and Rodenticide Act, as amended, is acceptable. This approval does not affect any conditions that were previously imposed on this registration. You continue to be subject to existing conditions on your registration and any deadlines connected with them.

A stamped copy of your labeling is enclosed for your records. This labeling supersedes all previously accepted labeling. Pursuant to 40 CFR 156.10(a)(6), you must submit one copy of the final printed labeling before you release the product for shipment with the new labeling. In accordance with 40 CFR 152.130(c), you may distribute or sell this product under the previously approved labeling for 18 months from the date of this letter. After 18 months, you may only distribute or sell this product if it bears this new revised labeling or subsequently approved labeling. “To distribute or sell” is defined under FIFRA section 2(gg) and its implementing regulation at 40 CFR 152.3.

Should you wish to add/retain a reference to the company’s website on your label, then please be aware that the website becomes labeling under FIFRA and is subject to review by the Agency. See FIFRA section 2(p)(2). If the website is false or misleading, the product would be misbranded and unlawful to sell or distribute under FIFRA section 12(a)(1)(E). 40 CFR 156.10(a)(5) lists examples of statements EPA may consider false or misleading. In addition, regardless of whether a website is referenced on your product’s label, claims made on the website may not substantially differ from those claims approved through the registration process, FIFRA section 12(a)(1)(B). Therefore, should the Agency find or if it is brought to our attention that a website contains false or misleading statements or claims substantially differing from the EPA approved registration, the website will be referred to the EPA’s Office of Enforcement and Assurance.

Page 2 of 2
EPA Reg. No. 6297-2
Action Case No. 00389541

Your release for shipment of the product constitutes acceptance of these conditions. If these conditions are not complied with, the registration will be subject to cancellation in accordance with FIFRA section 6. If you have any questions, please contact Karen Leavy by phone at 202-566-0668, or via email at Leavy.Karen@epa.gov.

Sincerely,

A handwritten signature in black ink that reads "Tara M. Flint Silva". The signature is written in a cursive, flowing style.

Tara Flint Silva, Acting Product Manager 31
Regulatory Management Branch I
Antimicrobials Division
Office of Pesticide Programs

Enclosure: stamped label

[Note to Reviewer: (parenthetical text) is optional; [bracketed text] is informational or an interchangeable option is presented, at least one of which must be used.]

ACCEPTED

02/09/2023

Under the Federal Insecticide, Fungicide and Rodenticide Act as amended, for the pesticide registered under EPA Reg. No. 6297-2

(MASTER LABEL)

JESSE

(Alternate Brand Names:

BISSELL® Hard Floor Sanitize
BISSELL® Hard Floor Sanitize
Citrus
BISSELL® Hard Floor Sanitize Fresh
Citrus
BISSELL® Hard Floor Sanitize
Orange Blossom
BISSELL® Hard Floor Sanitize
Cleaner
BISSELL® Hard Floor Sanitizer
BISSELL® Hard Floor Sanitize
BISSELL® Deodorizer
BISSELL® Hard Floor Sanitize
Cleaner concentrate
BISSELL® Hard Floor Sanitizer
concentrate
BISSELL® Tile Floor Sanitize
Cleaner
BISSELL® Tile Floor Sanitizer
BISSELL® Tile Floor Sanitize
Deodorizer
BISSELL® Tile Floor Sanitize
Cleaner concentrate
BISSELL® Wood Floor Sanitize
BISSELL® Wood Floor Sanitize
Cleaner
BISSELL® Wood Floor Sanitizer
BISSELL® Wood Floor Sanitize
concentrate
BISSELL® Wood Floor Sanitize
Cleaner concentrate
BISSELL® Wood Floor Sanitizer
concentrate
BISSELL® Antibacterial Hard Floor
Cleaner
BISSELL® Antibacterial wood Floor
Cleaner
BISSELL® Antibacterial tile Floor
Cleaner
BISSELL® Pet Hard Floor Sanitize
BISSELL® Pet Hard Floor Sanitize
Cleaner
BISSELL® Pet Hard Floor Sanitizer
BISSELL® Pet Hard Floor Sanitize
Deodorizer
BISSELL® Pet Hard Floor Sanitize
Cleaner concentrate
BISSELL® Pet Hard Floor Sanitizer
concentrate
BISSELL® Pet Tile Floor Sanitize
Cleaner
BISSELL® Pet Tile Floor Sanitizer
BISSELL® Pet Tile Floor Sanitize
Deodorizer
BISSELL® Pet Tile Floor Sanitize
Cleaner concentrate
BISSELL® Pet Wood Floor Sanitize

BISSELL® Pet Wood Floor Sanitize
Cleaner
BISSELL® Pet Wood Floor Sanitizer
BISSELL® Pet Wood Floor Sanitize
concentrate
BISSELL® Pet Wood Floor Sanitize
Cleaner concentrate
BISSELL® Pet Wood Floor Sanitizer
concentrate
BISSELL® Pet Antibacterial Hard
Floor Cleaner
BISSELL® Pet Antibacterial Wood
Floor Cleaner
BISSELL® Pet Antibacterial Tile
Floor Cleaner
BISSELL® Clean + Sanitize
BISSELL® Hard Floor Clean +
Sanitize
BISSELL® Clean + Antibacterial
BISSELL® Hard Floor Clean +
Antibacterial
BISSELL® Pet Clean + Sanitize
BISSELL® Pet Hard Floor Clean +
Sanitize
BISSELL® Pet Clean + Antibacterial
BISSELL® Pet Hard Floor Clean +
Antibacterial
BISSELL® Clean + Pet Sanitize
BISSELL® Hard Floor Clean + Pet
Sanitize
BISSELL® Clean + Pet Antibacterial
BISSELL® Hard Floor Clean +
Antibacterial Pet
BISSELL® Clean + Sanitize Pet
BISSELL® Hard Floor Clean +
Sanitize Pet
BISSELL® Clean + Antibacterial Pet
BISSELL® Hard Floor Clean +
Antibacterial
BISSELL® Wash + Sanitize
BISSELL® Wash + Antibacterial
BISSELL® Wash + Sanitize Pet
BISSELL® Wash + Antibacterial Pet
BISSELL® Wash + Pet Sanitize
BISSELL® Wash + Pet Antibacterial

Sanitaire For Use with Sanitaire
SC930 Series Formulated by
BISSELL Hard Floor Sanitize

Sanitaire Formulated by BISSELL
Hard Floor Sanitize For Use with
Sanitaire SC930 Series

Sanitaire Formulated by BISSELL
Hard Floor Sanitize

Sanitaire For Use with Sanitaire
SC930 Series Hard Floor Sanitize
Formulated by BISSELL

Sanitaire For Use with Sanitaire
SC930 Series Hard Floor Sanitize

Formulated by BISSELL Hard Floor
Sanitize Sanitaire For Use with
Sanitaire SC930 Series

Formulated by BISSELL Hard Floor
Sanitize Sanitaire

Formulated by BISSELL Hard Floor
Sanitize

Hard Floor Sanitize Formulated by
BISSELL Sanitaire For Use with
Sanitaire SC930 Series

Hard Floor Sanitize Formulated by
BISSELL

Sanitaire Hard Floor Sanitize by
BISSELL
Sanitaire Hard Floor Sanitize
Formulated by BISSELL

PAWSITIVELY CLEAN® Hard Floor
Sanitizer
PAWSITIVELY CLEAN® Hard Floor
Sanitizer + Deodorizer

BETTER LIFE® Hard Floor Sanitizer
BETTER LIFE® Hard Floor Sanitizer
+ Deodorizer

INSTACLEAN® Hard Floor Sanitizer
INSTACLEAN® Hard Floor Sanitizer
+ Deodorizer

STAIN & STINK® Hard Floor
Sanitizer
STAIN & STINK® Hard Floor
Sanitizer + Deodorizer

BISSELL® BIG GREEN® Hard
Floor Sanitizer
BISSELL® BIG GREEN® Hard
Floor Sanitizer + Deodorizer
BISSELL PET FOUNDATION® Hard
Floor Sanitizer
BISSELL PET FOUNDATION® Hard
Floor Sanitizer + Deodorizer)

[Note to Reviewer: (parenthetical text) is optional; [bracketed text] is informational or an interchangeable option is presented, at least one of which must be used.]

(FRONT PANEL)

**(HARD SURFACE) (HARD FLOOR[∞]) (WOOD FLOOR[∞]) (SANITIZER) – (CLEANER)
(CLEANING) - (DEODORIZER) – (ANTIBACTERIAL)**

[Insert usage site] [Cleaner] [Cleaning], [Bacteria* (killer) (reducer) (cleanser) (cleaner) (cleaning)], [Antimicrobial] [Antibacterial] [(Hard) (Wood) Floor[∞] Cleaner (for pet messes²)], [(Hard) (Wood) Floor[∞] Cleaning (for pet messes²) and Sanitizer], [(Pet) Cleaner(, &) Deodorizer(, &) (+) Sanitizer (Antibacterial)], [Dual Action (Pet) Cleaner & Deodorizer] [Dual Action (Pet) Cleaner(, &) Sanitizer (Antibacterial)], [Triple Action (Pet) Cleaner(, &) Deodorizer[, and] [+] Sanitizer (Antibacterial)], [(Insert usage site) (Pet) Deodorizer (and) (+) (Sanitize(r)) (Antibacterial)], [(Insert usage site) (Pet) Odor Neutralizer], [(Insert usage site) (Pet) Odor Eliminator], [(Insert usage site) Refresher], [[Antimicrobial] [Antibacterial] (Hard) (Wood) Floor[∞] Cleaner formula (and) (+) Sanitize(r)], [(Sanitization) (Sanitizing) [Antimicrobial] [Antibacterial] (Hard) (Wood) Floor[∞] Cleaning formula], [[Antimicrobial] [Antibacterial] Formula for (hard) (wood) floors[∞]]

Active Ingredients:

Alkyl (60% C ₁₄ , 30% C ₁₆ , 5% C ₁₂ , 5% C ₁₈) dimethyl benzyl ammonium chlorides	0.21%
Alkyl (68% C ₁₂ , 32% C ₁₄) dimethyl ethylbenzyl ammonium chlorides	0.21%
Other Ingredients	99.58%
Total:	100.00%

EPA Reg. No.: 6297-2

EPA Est. No.: [XXXX-XXX-XXX]

[Note to Reviewer: The following headers may precede the header EPA Est. No. where the product is packaged into a carton with a floor cleaning machine:

Formula produced

Last production]

**Keep Out of Reach of Children
CAUTION**

See additional precautionary statements on [back][side][right][left][other] [panel] of label [below].

[Manufactured] [Distributed] [by] [for]:

Bissell Homecare, Inc.

2345 Walker Ave, NW

Grand Rapids, MI 49544

Batch/Lot: [Note to Reviewer: The lot or batch number may also be stamped or imprinted directly on the packaging.]

(Net Contents:)

[_#_ (pre-measured [packets] [sachets]), fl. oz. each (Total Net Contents _____)]

[Note to Reviewer: (parenthetical text) is optional; [bracketed text] is informational or an interchangeable option is presented, at least one of which must be used.]

[Note to Reviewer: Boxed format or bullets may be used in First Aid section if label space permits]

FIRST AID

If in Eyes: Hold eye open and rinse slowly and gently with water for 15-20 minutes. Remove contact lenses, if present, after the first 5 minutes, then continue rinsing. Call a poison control center or doctor for treatment advice.

Have the product container or label with you when calling a poison control center or doctor, or going for treatment.

PRECAUTIONARY STATEMENTS HAZARDS TO HUMANS AND DOMESTIC ANIMALS

CAUTION. Causes moderate eye irritation. Avoid contact with eyes or clothing. Wash thoroughly with soap and water after handling and before eating, drinking, chewing gum, using tobacco, or using the toilet.

Recommended Use (Location)

[Residential Locations:]

All around the house [‡]	Cabin(s)	Family Room(s)	Mud Room(s)
All around the home [‡]	Camper(s)	Garage(s)	Nursery (Nurseries)
Attic(s)	Closet(s)	Home(s)	Pet area(s)
Baby's Room(s)	(Damp) Storage Area(s)	House(s)	Playroom(s)
Basement(s)	(Damp) Storage Room(s)	Laundry Room(s)	Sunroom(s)
Bathroom(s)	Den(s)/(Study(ies))	Living Room(s)	Vacation home(s)
Bedroom(s)	Dining Room(s)	Mobile Home(s)	Vehicles
Boat(s)	Dorm(s)		

[‡] Non-food contact surfaces only

[Commercial/Institutional Locations:]

Airport(s)	Fast Food Restaurant(s) [‡]	Motel(s)	[Spa(s)] (Massage) (Facial) (Hair) (& [Salon(s)])
Bowling Alley(s)	Funeral Home(s)	[Police] [and] [or] [Fire] Vehicle(s)	Sports Arena(s) [Stadium(s)]
(School) Bus(es)	Gas Station(s)	Public Area(s)	Subway(s)
Cafeterias [‡]	Greenhouse(s)	Public Facility(ies)	Supermarket(s) [‡]
Campground(s)	Health Club(s) [(Facility(ies))]	Public Telephone(s) (Booth(s))	Tanning Spa(s)
Church(es)	Hotel(s)	[Recreational Center(s)] [Facility(ies)]	Tattoo Parlor(s)
College(s)	Industrial Facility(ies)	Rest Stop(s)	Taxi
Concert Venue(s)	Institutional [Public] Bathrooms [Restrooms]	[Restroom(s)] [Restroom area(s)]	Transportation Terminal(s)
Convenience Store(s)	(Institutional) Laundromat(s)	Retail and Wholesale Establishment(s)	Train(s)
Convention Center(s)	Institution(s)	Retail Business(es)	University(ies)
Correctional Facility(ies)	Kennel(s)	[Retail] [Wholesale] Florists	Veterinary Clinic(s)
Cruise Ship(s) [‡]	Library(ies)	Ride Share(s)	Warehouse Club(s)
Day Care center(s) [‡]	Locker Room(s)	School(s)	
Discount Retailer(s)	Lounge(s)	(Pet) Shelter(s)	
Dorm(s)/Dormitories	Mall(s)	Shipper(s)	
Elevator(s)	General Merchandise Store(s)	Shopping Center(s)	
Factory(ies)	Military Installation(s)	Shop(s)	
Fairground(s) [Festival ground(s)] [‡]	Mortuary(ies)	Shower Room(s)	

[‡] Non-food contact surfaces only

[±] Indoor areas only

[Note to Reviewer: (parenthetical text) is optional; [bracketed text] is informational or an interchangeable option is presented, at least one of which must be used.]

Recommended Use (Surfaces) [Note to reviewer: listed items may include a graphic depicting surface as presented at in the Graphics section of the label.]

[Floors/Flooring:]

[Note to Reviewer: If the phrase “sealed, non-porous:” is used once with the following surfaces in a list, then the phrase does not need to be repeated prior to each surface listed.]

Sealed, Non-porous Hardwoods	Sealed, Non-porous Wood Floors	Sealed, Non-porous Ceramic Tile(s)	Vinyl (Tile) (and) (Luxury Vinyl (Tile))
Sealed, Non-porous Floors	Sealed, Non-porous Hard Floors	Sealed, Non-porous Terrazzo	Sealed, Non-porous Cement
Sealed, Non-porous Marble	Sealed, Non-porous Stone		

[Note to Reviewer: Alternatively may list as:]

Hardwoods[∞], Floors[∞], Wood Floors[∞], Hard Floors[∞], Ceramic Tile[∞], Cement[∞], Marble[∞], Stone[∞], Terrazzo[∞], (and)(or) Vinyl

[Non-Floor Surfaces:]

[Note to Reviewer: If the phrase “hard, non-porous surfaces of:” is used once with the following surfaces in a list, then the phrase does not need to be repeated prior to each surface listed, nor the qualifier symbol ^B added.]

Cabinets [∞]	Light Switches/Switch Plates	Refrigerator Exteriors	Telephones
Chairs ^B	Faucets	Sealed, Non-Porous (Hard)Wood(s)	Vanities ^B
Changing Tables ^B	Finished Wood [∞]	Sports Equipment ^B	Walls ^B
Countertops [‡]	Furniture ^B	Toilet Seats/Exteriors	Work Surfaces ^B
Desks [∞]	Keyboards	Toys ^B (Followed By Potable Water Rinse)	
Door Handles/Knobs	Range Hoods	[Trash] [Garbage] Cans, Diaper Pails	

[Non-Floor Surface Materials:]

Glass	Laminate	Sealed, Non-porous Ceramic	Sealed, Non-porous Terrazzo
Glazed enamel	Metal	Sealed, Non-porous Cement	Stainless steel
Glazed porcelain	Plastic	Sealed, Non-porous Marble	Vinyl
Formica	Plexiglas	Sealed, Non-porous Stone	

[Note to Reviewer: (parenthetical text) is optional; [bracketed text] is informational or an interchangeable option is presented, at least one of which must be used.]

DIRECTIONS FOR USE

It is a violation of Federal law to use this product in a manner inconsistent with its labeling. Read and follow all directions and precautions on this product label.

[Note to Reviewer: Table is optionally included on a printed label. It is not required to include the table in full, but at least one dilution instruction will be listed on the printed label if there is no user guide/manual brochure to reference.]

(Product Dilution Instructions)

Amount of Product (fl. oz.)	Amount of (Warm) Tap Water
0.5	3 fl. oz.
1	6 fl. oz.
1.5	9 fl. oz.
2	12 fl. oz.
2.5	15 fl. oz.
3	18 fl. oz.
3.5	21 fl. oz.
4	24 fl. oz.
4.5	27 fl. oz.
5	30 fl. oz.
5.5	33 fl. oz.
6	36 fl. oz.
6.5	39 fl. oz.
7	42 fl. oz.
7.5	45 fl. oz.
8	48 fl. oz.
8.5	51 fl. oz.
9	54 fl. oz.
9.5	57 fl. oz.
10	60 fl. oz.
22	1 gal.
32	1.5 gal.
44	2 gal.
54	2.5 gal.

[Section I. Directions and Text for Use on Floors with a BISSELL Machine]

[For use with (BISSELL) (CrossWave) (with steam^a) (and) (SpinWave) (Sanitaire (SC930 Series) (machines).]

[Suitable for use with (BISSELL) (CrossWave) (with steam^a) (and) (SpinWave) (Sanitaire (SC930 Series) (machines)]

[For use with BISSELL Wet Cleaning System machines.]

(Flush machine with clean water after use.)

[Note to Reviewer: The below statement must appear on the label should the product be for use with a BISSELL machine with a fill line or instruction to meet a fill line. Otherwise, it is optionally included.]

Read [User] [Guide] [Manual] [Brochure] [directions on machine] fully prior to use.

[Note to Reviewer: (parenthetical text) is optional; [bracketed text] is informational or an interchangeable option is presented, at least one of which must be used.]

[Note to Reviewer: When Section I. “Option A” Use Directions appear on the antimicrobial label, the User Manual is not a piece of the required product label. When Section I. “Option B” Use Directions appear on the antimicrobial label, the User Manual is considered part of required labeling.]

[Option A - Note to Reviewer: By filling to the lines indicated on the tank, the solution will mix at an equivalent to 1 part formula + 6 parts water. For large areas, 4 fl oz of product is mixed with 24 fl oz water or equivalent dilution. For small areas 2 fl oz of product is mixed with 12 fl oz of water or equivalent dilution.]

How to use (in) (with) (CrossWave) (machine):

1. Fill machine formula tank with (warm) water to Water fill line (for small areas (to) (-) 12 fl oz., for large areas (to) (-) 24 fl. oz.). Then add formula to Formula fill line (for small areas (to) (-) 2 fl. oz., for large areas (to) (-) 4 fl. oz.). Cap tank and return to machine.
2. Use machine as directed in the User Guide under the heading “**Cleaning Your Hard Floors**”. **To clean:** Hold the spray trigger to apply solution to floor. **To Sanitize:** Remove visible soil. Hold spray trigger to apply solution to floor. Allow to remain visibly wet for 5 minutes.
3. Empty (dirty water) (pick-up) tank down the drain.
4. Flush tank, filter, and float with clean water after use. Allow to air dry.
5. Stay off cleaned area until completely dry.

How to use (in) (with) (SpinWave) (machine):

1. Fill machine formula tank with (warm) water to Water fill line (for small areas (to) (-) 12 fl oz., for large areas (to) (-) 24 fl. oz.). Then add formula to Formula fill line (for small areas (to) (-) 2 fl. oz., for large areas (to) (-) 4 fl. oz.). Cap tank and return to machine.
2. Use machine as directed in the machine User Guide under the heading “**Cleaning Your Sealed Hard Floors**”. **To clean:** Push the SPRAY button to dispense solution. **To Sanitize:** Remove visible soil. Push the SPRAY button to dispense solution. Allow to remain visibly wet for 5 minutes.
3. Stay off cleaned area until completely dry.

(Note: Any solution remaining in the clean water tank should be emptied prior to machine storage.)

[Option B – Note to Reviewer: By filling to the lines indicated on the BISSELL machine tank, the solution will mix at a dilution equivalent to 1 part formula + 6 parts water.]

[Option B.1.]

How to use (in) (with) (CrossWave) (with steam^o) ([Sanitaire] [SC930 [insert other series number here] Series]) (Robot) (insert equivalent brand name) (machine):

1. *[for machines with a small and large fill line]*
Fill machine formula tank with (warm) water to Water fill line for small areas. Then add formula to Formula fill line for small areas. Or add (warm) water to Water fill line for large areas, and then add formula to Formula fill line for large areas. Water to concentrate ratio is 6:1. Cap tank and return to machine.

[for machines with only one fill line:]

[Note to Reviewer: (parenthetical text) is optional; [bracketed text] is informational or an interchangeable option is presented, at least one of which must be used.]

- Fill machine formula tank with (warm) water to Water fill line. Then add formula to Formula fill line. Water to concentrate ratio is 6:1. Cap tank and return to machine.
2. Use machine as directed in the [User] [Guide] [Manual] [Brochure] [directions on machine] under the heading “**Cleaning Your Hard Floors**”.
To clean: [Hold] [Press] the spray trigger ((or) for [Robot] [insert Robot brand name here]) set to “Clean” (mode) to apply solution to floor. (For heavier soils press the steam button, if available.) **To Sanitize:** Remove visible soil. [Hold] [Press] spray trigger] ((or) for [Robot] [insert Robot brand name here]) set to “Spot” Mode) to [apply] [dispense] solution to floor. Allow to remain visibly wet for 5 minutes.
 3. Empty (dirty water) (pick-up) tank down the drain.
 4. Flush tank, filter and float with clean water after use. Allow to air dry.
 5. Stay off cleaned area until completely dry.

How to use (in) (with) (SpinWave) (with steam^a) (Sanitaire) (Robot) (machine):

1. *[for machines with a small and large fill line]*
Fill machine formula tank with (warm) water to Water fill line for small areas. Then add formula to Formula fill line for small areas. Or add (warm) water to Water fill line for large areas, and then add formula to Formula fill line for large areas. Water to concentrate ratio is 6:1. Cap tank and return to machine.

[for machines with only one fill line:]

- Fill machine formula tank with (warm) water to Water fill line. Then add formula to Formula fill line. Water to concentrate ratio is 6:1. Cap tank and return to machine.
2. Use machine as directed in the machine [User] [Guide] [Manual] [Brochure] [directions on machine] under the heading “**Cleaning Your Sealed Hard Floors**”.
To clean: [Push] [Hold] the SPRAY button to dispense solution ((or) for [Robot] [insert Robot brand name here]) set to “Clean” (mode). (For heavier soils press the steam button, if available.) **To Sanitize:** Remove visible soil. [Push] [Hold] the SPRAY button ((or) for [Robot] [insert Robot brand name here]) set to “Spot” Mode) to [apply] [dispense] solution. Allow to remain visibly wet for 5 minutes.
 3. Stay off cleaned area until completely dry.

[Note: Any solution remaining in the clean water tank should be emptied prior to machine storage.]

[Option B.2]

How to Use (with pre-measured packets):

[For Use with pre-measured sachets/packets in machine with an integrated dispenser in formula-only tank]

1. Fill the Clean Water Tank with (warm) water to the Fill line indicated on the tank. (Use warm water.)
2. Lift Formula lid and place a (BISSELL) [insert product name] [sachet] [packet] [pouch] in holder.
3. Use machine as directed [in the machine [User] [Guide] [Manual] [Brochure]] [on machine] under the heading “**Cleaning Your Sealed Hard Floors**”.
To clean: Push the SPRAY button to dispense solution. **To Sanitize:** Remove visible soil. Push the SPRAY button to dispense solution. Allow to remain visibly wet for 5 minutes.
4. Stay off cleaned area until completely dry.

[Note to Reviewer: (parenthetical text) is optional; [bracketed text] is informational or an interchangeable option is presented, at least one of which must be used.]

Note: Any solution remaining in the clean water tank should be emptied prior to machine storage.

[For Use with pre-measured sachets/packets in machine withOUT an integrated dispenser in formula-only tank]

1. Fill the Clean Water Tank with (warm) water to the Fill line indicated on the tank. (Use warm water.)
2. Tear open (BISSELL) [insert product name] [sachet] [packet] [pouch] at indicated notch and pour contents into tank.
3. Use machine as directed in the machine User [Guide] [Manual] [Brochure] under the heading “**Cleaning Your Sealed Hard Floors**”. **To clean:** Push the SPRAY button to dispense solution. **To Sanitize:** Remove visible soil. Push the SPRAY button to dispense solution. Allow to remain visibly wet for 5 minutes.
4. Stay off cleaned area until completely dry.

Note: Any solution remaining in the clean water tank should be emptied prior to machine storage.

[Section II. Directions and Text for Use on Floors with a NON-BISSELL Machine]

[Use directions for a non-BISSELL/Fill line machine:]

How to use with a hard floor[™] cleaning device:

1. Fill machine formula tank with 4 fl. oz. of product [*insert brand name*] and 24 fl. oz. (warm) water (or equivalent dilution). [Fill machine formula tank with product and water as indicated in the table (above)(below).]
2. Pre-clean floors to remove visible soil.
3. **To Sanitize:** Spray or apply solution on hard, non-porous floors and allow to remain visibly wet for 5 minutes.
4. Stay off cleaned area until completely dry.

Note: Any solution remaining in the solution tank should be emptied prior to machine storage.

[Section III. Directions and Text for Use on Floors without a floor cleaning device]

[Directions for Mop & Bucket]

How to mop your floor (without a BISSELL machine) [Directions for Use]:

1. Clean the floors to remove visible soil.
2. Fill bucket [container] with [1 gallon] of (warm) (tap) water and add 22 fl. oz. of product (or equivalent dilution) [*Note to Reviewer: may replace dilution values as presented in Product Dilution Instructions Table*].
3. Mop hard, non-porous floors until thoroughly wet, rewetting the mop as needed.
4. Allow floors to remain visibly wet for 5 minutes. (Stay off sanitized area until completely dry.)
5. Replace use solution when it becomes heavily soiled.

[Note to Reviewer: (parenthetical text) is optional; [bracketed text] is informational or an interchangeable option is presented, at least one of which must be used.]

[Section IV. Directions and Text for Use on Non-Floor Hard, Non-Porous Surfaces]

To sanitize hard, non-porous, non-food contact surfaces:

1. Mix 4 fl. oz. of product [insert product name] with (warm) 24 fl. oz. tap water (or equivalent dilution) *[Note to Reviewer: may replace dilution values as presented in Product Dilution Instructions Table]*.
2. Clean to remove visible soil.
3. Apply product with a cloth or trigger sprayer until thoroughly wet (or immerse items in a bucket [container]. Make fresh solution if it becomes heavily soiled or diluted.).
4. Allow surfaces to remain visibly wet for 5 minutes.
5. Allow to air dry(, or wipe dry after contact time).

Use only on hard non-porous floors. Not for use on unsealed, damaged, or unfinished floors.

For more information about using this product, visit www.bissell.com.

[Note to Reviewer: (parenthetical text) is optional; [bracketed text] is informational or an interchangeable option is presented, at least one of which must be used.]

STORAGE AND DISPOSAL

Storage: Store in original container in areas inaccessible to small children. Store between 35°F to 85°F in dry, well-ventilated area away from chemicals, direct light, heat or open flame. Do not mix with other cleaning products. Keep securely closed. **Pesticide Disposal and Container**

Handling: Nonrefillable container. Do not reuse or refill this container. Wrap (container) and put in trash or offer for recycling if available.

[For Pre-measured Packets/Sachets:]

Once cleaning is complete and [sachet] [packet] [pouch] is empty, recycle product according to local regulations if available or put in trash.

([Manufactured] [Distributed] by)

(BISSELL brand)

(Questions) (or) (comments) 1.800.237.7691

©(year) BISSELL Homecare Inc., Grand Rapids, MI 49544 USA
www.BISSELL.com)

©(year) BISSELL Homecare International
BISSELL International Trading Company BV
Postbus 12874
1100 AW Amsterdam Zuidoost
The Netherlands)

©(year) BISSELL Homecare International
BISSELL International Trading Company BV
Willem Fenengastraat 14
1096 BN Amsterdam
The Netherlands)

[Questions?] [Comments?] [Call XXX-XXX-XXXX]

(For Consumer Care contact:
BISSELL Homecare, Inc.
P.O. Box 1888
Grand Rapids, MI 49501)

[Made in (insert country of manufacture origin) (with globally sourced parts)]

(Order more, Learn about ingredients. (www.bissell.com)(www.BISSELL.com/patents)
1.800.237.7691)

(Type ____) (Item # ____)

(Peel back for more information)

[Note to Reviewer: (parenthetical text) is optional; [bracketed text] is informational or an interchangeable option is presented, at least one of which must be used.]

Optional Label Statements, Marketing Claims, and Pictograms:

[Note to Reviewer: below statement is not optional when a selected Marketing Claim includes the qualifier symbol indicated here.]

***Kills 99.9% of *Enterobacter aerogenes* (ATCC 13408) (,) (and) *Staphylococcus aureus* (ATCC 6538) (Staph[^]) (and *Salmonella enterica* (ATCC 10708))**

[Sanitizing claims]

2 in 1 (Dual Action) (formula) – cleans, deodorizes (in 1 easy step²)
2 in 1 (Dual Action) (formula) – cleans, sanitizes (in 1 easy step²)
2 in 1 (Dual Action) (formula) – freshens, deodorizes (in 1 easy step²)
2 in 1 (Dual Action) (formula) – freshens, sanitizes (in 1 easy step²)
2 in 1 (Dual Action) (formula) – sanitizes, deodorizes (freshens) (in 1 easy step²)
2 in 1 formula cleans and sanitizes
2 in 1 formula sanitizes and deodorizes
2 in 1 formula sanitizes and eliminates allergens**
2 in 1 formula sanitizes and freshens
3 in 1 (Triple Action) (formula) – cleans, sanitizes, deodorizes (in 1 easy step²)
3 in 1 (Triple Action) (formula) – freshens, sanitizes, deodorizes (in 1 easy step²)
3 in 1 formula cleans, sanitizes and deodorizes
3 in 1 formula cleans, sanitizes and eliminates allergens**
3 in 1 formula cleans, sanitizes and freshens
3 in 1 formula sanitizes, deodorizes, and eliminates allergens**
3 in 1 formula sanitizes, deodorizes, and freshens
4 in 1 [Four in One] (formula) – cleans, sanitizes, deodorizes, freshens (in 1 easy step²)
4 in 1 formula cleans, sanitizes, deodorizes and eliminates allergens**
4 in 1 formula cleans, sanitizes, deodorizes and freshens
4 in 1 formula sanitizes, deodorizes, freshens, and eliminates allergens**
5 in 1 formula cleans, sanitizes, deodorizes, freshens and eliminates allergens**
Antibacterial
Antibacterial formula cleans and sanitizes in [one] [1] step²
(Antibacterial) (formula) cleans and deodorizes
(Antimicrobial) (formula) cleans and sanitizes
(Both) Cleans & Sanitizes — better than cleaning alone
(Clean) [+][&] Sanitize for a more effective clean
Cleans & Sanitizes in 5 minutes
Cleans [&] [+] Sanitizes
Cleans [&] [+] Sanitizes (insert usage site)
Cleans [&] [+] Sanitizes in 5 minutes [in] [on] [insert usage site] [insert usage surface]
Cleans (+) (and) (sanitizes) (+) (and) (deodorizes) (+) (and) (freshens) in one easy step²
Cleans (+) (Sanitizes) (+) (Deodorizes) (+) (Freshens) (+) (Removes Allergens**) (+) (Removes Odors)
Cleans and eliminates 99.9% of odor causing bacteria
[Clean] (and) [loosen] (tough) stains (and sanitizes)
Cleans and removes (99.9% of) odor causing bacteria
Cleans and Sanitizes (in one easy step²)
Cleans and sanitizes, eliminates 99.9% of bacteria*
Cleans as it sanitizes²
Cleans, (Sanitizes), (Deodorizes), (Freshens), (Removes Allergens**) in [one] [1] easy step²
Cleans, sanitizes, refreshes (insert usage site) (insert usage surface)

[Note to Reviewer: (parenthetical text) is optional; [bracketed text] is informational or an interchangeable option is presented, at least one of which must be used.]

Convenient to use (cleans and sanitizes)
Deep clean beyond what's seen™²
Effective to kill 99.9% of odor causing bacteria
Effectively kills 99.9% of bacteria*
Eliminates (pet) odors and [kills] [removes] [gets rid of] 99.9% of the bacteria that cause them
Eliminates (the most common) allergens**
Eliminates 99.9% of bacteria* [in] [on] [insert usage site] [insert usage surface]
Eliminates 99.9% of odor causing bacteria [in] [on] [insert usage sites] [insert usage surface]
[Eliminates] [Kills] tough odors and bacteria*
Eliminates 99.9% of tough odor(s)[bacterial odor(s)][pet odors] on (insert usage surface)
[Eliminates] [removes] 99.9% of (the toughest) (tough) odors caused by bacteria [in] [on] [insert usage site] [insert usage surface]
Eliminates 99.9% of bacteria*
For cleaning and sanitizing (insert usage site) (insert usage surface)
Go beyond surface cleaning²
Goes beyond surface cleaning²
Kills (99.9% of) odor causing bacteria [in] [on] [insert usage site] [insert usage surface] (for a fresh, clean home)
Kills (99.9%) (of) odor causing bacteria
Kills 99.9% of bacteria that cause (pet) odors
Kills 99.9% of bacteria*
Kills 99.9% of bacteria* and eliminates (pet) odors for a cleaner, fresher home
Kills 99.9% of bacteria* at the source
Kills 99.9% of bacteria* in (only) 5 minutes [in] [on] [insert usage site] [insert usage surface]
Kills 99.9% of bacteria* in 5 minutes for [insert usage site] [insert usage surface]
Kills 99.9% of bacteria* [in] [on] [insert usage site] [insert usage surface]
Kills 99.9% of *Enterobacter aerogenes*(,) (and) *Staphylococcus aureus* (staph[^]) (and) *Salmonella enterica*) [in] [on] [insert usage site] [insert usage surface] in 5 minutes
Kills 99.9% of household bacteria* [in] [on] [insert usage site] [insert usage surface]
Kills (99.9% of) odor causing bacteria [in] [on] [insert usage site] [insert usage surface] (for a fresh, clean home)
Kills odor causing bacteria (for a fresh, clean home)
Kills 99.9% of odor causing bacteria (that ordinary cleaners don't)
Kills 99.9% of odor causing bacteria and eliminates (pet) odors for a cleaner, fresher home
Kills 99.9% of odor causing bacteria and removes (pet) odors for a cleaner, fresher home
Kills 99.9% of odor causing bacteria at the source
Kills 99.9% of odor causing bacteria [in] [on] [insert usage site] [insert usage surface]
[Kills] [eliminates] 99.9% of *Staphylococcus aureus* (staph[^]) (and) *Enterobacter aerogenes*(,) (and) (*Salmonella enterica*) in 5 minutes [in] [on] [insert usage surface] [insert usage site]
[Kills] [destroys] [eliminates] 99.9% of *Staphylococcus aureus* (staph[^]) (and) *Enterobacter aerogenes*(,) (and) (*Salmonella enterica*) in 5 minutes [in] [on] [insert usage site] [insert usage surface]
Kills odor causing bacteria (for a fresh, clean home)
Leaves [insert usage site] [insert usage surface] sanitary
Leaves (insert usage surfaces) clean and sanitized
Leaves (insert usage surfaces) cleaned, sanitized, deodorized
Leaves (insert usage surfaces) sanitized
Multi-purpose formula [cleans] (and) [sanitizes] (and) [deodorizes] (and) [freshens] (and) [eliminates allergens**]
Neutralizes and reduces the growth of bacteria*
Neutralizes, reduces, and controls the growth of odor causing bacteria

[Note to Reviewer: (parenthetical text) is optional; [bracketed text] is informational or an interchangeable option is presented, at least one of which must be used.]

One easy step!²

One step (cleaning) (and) (sanitizing)²

One step (cleans) (and) (sanitizes) (and) (deodorizes) (and) (freshens) (and) (eliminates allergens^{**})²

One step clean(s) and sanitizes(s)²

(Pet) Stain and odor remover and sanitizer

Removes [99.9% of bacterial odor] [99.9% of bacterial odors] [pet odors] [in] [on] [insert usage site] [insert usage surface]

[Removes] [Eliminates] 99.9% of bacteria*

Removes (pet) odors [and [kills] [removes] [gets rid of] 99.9% of the bacteria that cause them]

Removes (the most) (common) allergens^{**}

[Sanitization][Sanitizing][Antibacterial] Treatment

Sanitize after cleaning your pet messes

Sanitizes

Sanitizes (insert usage site) (insert usage surface) in 5 minutes

Sanitizes [insert usage sites] [insert usage surface]

Sanitizes and eliminates [pet odors] [odors] [allergens^{**}] (and) [everyday dirt] [spots and stains]

Sanitizes and loosens (tough) stains

Sanitizes and refreshes

Sanitizes as it cleans²

Stain & odor [remover] [eliminator] that sanitizes as it cleans

Stain removal

Take (more) control of your cleaning with [sanitization] [insert product name]

The easy way to clean and sanitize your [insert usage site] [insert usage surface]

The easy, effective, and convenient way to sanitize (insert usage site) (insert usage surface)

Thoroughly cleans and deodorizes [insert usage site] [insert usage surface], eliminating stains, odor causing bacteria, and allergens^{**}

Thoroughly cleans and deodorizes [insert usage site], removing stains, odor causing bacteria, and allergens^{**}

To eliminate 99.9% of bacteria* [in] [on] [insert usage site] [insert usage surface]

To eliminate 99.9% of odor causing bacteria on [insert usage site] [insert usage surface]

To remove 99.9% of odor causing bacteria [in] [on] [insert usage site] [insert usage surface]

Triple action cleans, kills odor-causing bacteria and refreshes

Triple (cleaning) action deep cleans, removes odor-causing bacteria and deodorizes (freshens)

Triple (cleaning) action deep cleans, removes odor-causing bacteria and removes stains

Triple (cleaning) action deep cleans, removes odor-causing bacteria and [removes] [eliminates] allergens^{**}

Triple (cleaning) action removes odor-causing bacteria, deodorizes and freshens

Triple (cleaning) action removes odor-causing bacteria, deodorizes and removes stains

Triple (cleaning) action removes odor-causing bacteria, deodorizes and [removes] [eliminates] allergens^{**}

[Cleaning Claims]

2 in 1 (formula) cleans and [eliminates] [removes] allergens^{**}

2 in 1 (formula) cleans and deodorizes

2 in 1 (formula) cleans and freshens

2 in 1 (formula) deodorizes and [eliminates] [removes] allergens^{**}

2 in 1 (formula) deodorizes and freshens

2 in 1 (formula) freshens and [eliminates] [removes] allergens^{**}

2 in 1 cleaning formula that cleans and deodorizes at the same time

[Note to Reviewer: (parenthetical text) is optional; [bracketed text] is informational or an interchangeable option is presented, at least one of which must be used.]

3 in 1 formula) [cleans] (and) [deodorizes] (and) [freshens] (and) [eliminates allergens**]
[removes allergens*]

3 in 1 (formula) cleans, deodorizes, and [eliminates] [removes] allergens**

3 in 1 (formula) cleans, deodorizes, and freshens

3 in 1 (formula) deodorizes, freshens, and [eliminates] [removes] allergens**

4 in 1 (formula) cleans, deodorizes, freshens and [eliminates] [removes] allergens**

Boost your cleaning results

Booster

Boosts cleaning for a cleaner, fresher home

Boosts cleaning performance

Boosts cleaning performance for a cleaner, fresher home

Boosts cleaning performance to also deodorize

Boosts cleaning performance to clean beyond what's seen

Bring back the beauty

Bring back the shine

Cleaning booster

Cleans & Deodorizes – better than cleaning alone

Cleans [+] [&] deodorizes

Cleans [+] [&] Deodorizes [insert usage site]

Cleans (insert usage site) (insert usage surface)

Cleans and protects your hardwoods[∞]

Cleans and refreshes pet messes

Cleans as it deodorizes

Cleans everyday (pet) messes

Cleans plus boosts

Cleans the toughest soils[°]

Cleans tough [pet spots] [spots] (and) [pet stains] [stains]

Cleans tough stains ([in] [on] [insert usage site] [insert usage surface])

Cleans, deodorizes and freshens all in one (formula)

Cleans, Deodorizes and Reconditions

Cleans, deodorizes, and freshens (insert usage surfaces)

Cleans, deodorizes, and restores (insert usage surfaces)

Complete cleaning and deodorizing system

Deep down clean(ing)

Deodorizes as it cleans

Dual action (formula) cleans and [eliminates] [removes] allergens**

Dual action (formula) cleans and deodorizes

Dual action (formula) cleans and freshens

Dual action (formula) deodorizes and [eliminates] [removes] allergens**

Dual action (formula) deodorizes and freshens

Dual action (formula) freshens and [eliminates] [removes] allergens**

Dual action cleaner and deodorizer

Easily removes soils and stains

Effective cleaning

Effective cleaning of tough [pet] [spots] [stains] (and) [soils]

(Effectively) removes (tough) dirt and grime

Eliminates (non-living) allergens**

Eliminates [pet odors] [odors] [allergens**] [everyday dirt] (and) [spots and stains]

Eliminates allergens**

Eliminates dirt, dust, and common allergens** from [insert usage site] [insert usage surface]

[Note to Reviewer: (parenthetical text) is optional; [bracketed text] is informational or an interchangeable option is presented, at least one of which must be used.]

Eliminates tough stains like [red wine], [food stains], [fruit juice], [pet messes], [mud/dirt], [ink], [chocolate], [coffee/tea], [cola], [blood], [grease], [motor oil], [& more]
Enhances the cleaning performance
Eradicates [tough] [dirt] (and) [stains] [pet stains]
For a cleaner home
For a cleaner, fresher home
For a cleaner, fresher household
For a deep clean
For a thorough deep clean
Get your floors back to a barefoot clean feeling
Improve your cleaning results
Improve(s) cleaning performance for a cleaner, fresher home
Improves cleaning performance
Improves cleaning performance to also deodorize
[insert usage site] cleaner
Leaves [insert usage site] [insert usage surface] looking clean and refreshed
Leaves a barefoot clean feeling
No (hard) scrubbing required
Perfect for (high touch surfaces): [Toilet Handles], [Door Knobs], [Sinks], [Toys], [Desks^{oo}], [Keyboards], [Light switches], [Telephones]
Pet stain and odor remover [deodorizer]
Removes (non-living) allergens**
Removes [pet odors] [odors] [allergens**] [everyday dirt] (and) [spots and stains]
Removes [pet spots] [spots] (and) [stains] without hard scrubbing
Removes [tough] [dirt] (and) [stains] [pet stains]
Removes allergens**
Removes deep down [dirt], [pet stains], [stains], (&) [pet odors], [odors]
Removes dirt, dust, and common allergens** from [insert usage site] [insert usage surface]
Removes tough (dirt) stains like [red wine], [food stains], [fruit juice], [pet messes], [mud/dirt], [ink], [chocolate], [coffee/tea], [cola], [blood], [grease], [motor oil], [& more]
Removes tough [pet] [spots] [stains] [soils] (and) [odors] (in) (on) (insert usage site) (insert usage surface)
Removes tough dirt and grime
Removes tough odors and soils (in) (on) (insert use site) (insert usage surface)
Triple (cleaning) action deep cleans, deodorizes, and [removes] [eliminates] allergens**
Triple (cleaning) action deep cleans, freshens and [removes] [eliminates] allergens**
Triple (cleaning) action deodorizes, freshens and [removes] [eliminates] allergens**
Triple (cleaning) action deodorizes, freshens and removes stains
Triple action (formula) cleans, deodorizes, and [eliminates] [removes] allergens**
Triple action (formula) cleans, deodorizes, and freshens

[Deodorizing Claims]

(insert usage site) (insert usage surface) (Pet) Deodorizer
(insert usage site) (insert usage surface) (Pet) Odor Eliminator
(insert usage site) (insert usage surface) (Pet) Odor Neutralizer
(insert usage site) (insert usage surface) (Pet) Spot and stain deodorizer
(insert usage site) (insert usage surface) Refresher
Clean and fresh scent
Deodorizes and freshens (leaving a light, clean scent)
Destroys tough (pet) odors

[Note to Reviewer: (parenthetical text) is optional; [bracketed text] is informational or an interchangeable option is presented, at least one of which must be used.]

Doesn't just mask (pet) odors
Eliminate (pet) odors at (their) (the) source
Eliminates (pet) odors
Eliminates (pet) odors, doesn't just mask
[(Eliminates)] [(removes)] (the toughest) (tough) odors
Eliminates [(tough odor)] [(tough odors)] [(pet odors)] on [(insert usage site)]
Eliminates odors (including) (kitchen) (pet) (and) (smoke)
Eliminates the toughest (pet) odors at the source
For ultimate freshness
Fresh, Clean scent
(Fresh) (Clean) (Orange Blossom) (Citrus) (Fresh Citrus) (fragrance) (scent)
Freshens (insert usage site) (insert usage surface)
Freshens home with the scent of [(insert fragrance name)]
Full day freshness
Keep [(insert usage site)] smelling fresher longer
Keeps [(insert usage site)] smelling fresh
(Leaves behind a) Clean, Fresh Scent
Leaves [(insert usage site)] [(insert usage surface)] deodorized
Leaves [(insert usage site)] [(insert usage surface)] smelling [(refreshed)] [(fresh)] [(clean)]
Leaves [(rooms)] [(home)] smelling fresh and clean
Leaves a fresh scent
Leaves a fresh, clean scent
Leaves a light, clean scent
Leaves your [(insert usage site)] [(insert usage surface)] free of (pet) odors
Lifts (pet) odors and freshens
(Light), (fresh), clean scent
Lightly scented
Lightly scented and suitable for frequent use
Long lasting freshness
Neutralizes (pet) odors
Neutralizes (pet) odors [in] [on] [(insert usage site)] [(insert usage surface)]
Refreshes (insert usage site) (insert usage surface)
Remove (pet) odors at (their) (the) source
Removes (pet) odors
Removes (pet) odors doesn't just mask
Removes [(tough odor)] [(tough odors)] [(pet odors)] [in] [on] [(insert usage site)] [(insert usage surface)]
Removes odors (including) (kitchen) (pet) (and) (smoke)
Removes odors + provides a clean, light scent
Removes the toughest (pet) odors at the source
Removes tough (pet) odors and soils

[General Usage Claims]

Bottle contains minimum of X% post-consumer recycled plastic
Carefully designed for home use
Commercial Use
Contains no heavy metals, optical brighteners or dyes
Does not dull floors
Does not harm sealed, nonporous flooring

[Note to Reviewer: (parenthetical text) is optional; [bracketed text] is informational or an interchangeable option is presented, at least one of which must be used.]

Dye Free (formula) (technology)

For everyday use

For use [with] ([in]) [insert machine brand name] (series)

Formulated by BISSELL

Great for use in any room of the house

Leaves ([insert usage site]) ([insert usage surface]) clean for children and pets (when used as directed)

Leaves a clean floor

Leaves floors virtually streak-free

Leaves no [(dulling)] [(sticky)] film

No resoiling

No streaks

No VOCs

Non-abrasive to [(surfaces)][(floors)]

Non-dulling [(solution)] [(formula)] leaves floors clean

No-rinse (formula) (solution)

(Okay) for everyday use

(Okay) (suitable) for daily use

(Okay) (suitable) for monthly use

(Okay) (suitable) for regular use

(Okay) (suitable) for weekly use

Okay (suitable) to use daily

Perfect for cleaning up pet messes

Restores a natural shine

Streak-free clean

Suitable & gentle for your [(insert usage site)] [(insert usage surface)]

Suitable for use [in] [on] [(insert usage site)] [(insert usage surface)]

[(Suitable) for] [(For use in)] [(BISSELL)] [(CrossWave)] [SpinWave] (Wet Cleaning System) (machines)

Suitable for your [(insert usage sites)] [(insert usage surface)]

This carton contains: [(insert product brand name)]

This product is approved for use [in] [on] [(insert usage sites)] [(insert usage surface)]

Uncover your floor's natural shine

Up to [(x)] uses per bottle

Use daily [(in)] [(on)] the [(insert usage area)] [(insert usage surface)] your

[(family)][(and)][(pets)] touch (the most) often

[(Use on)] [(Designed for)] [(suitable for)] [(insert usage site)] [(insert usage surface)] that you and your family come in contact with everyday

(Ultra) concentrated

Use throughout your house†

(Virtually) streak free (clean)

Will not bleach floors or surfaces

[Easy Use Claims]

(Suitable) For everyday use

Can be used anytime

Designed for households with pets & kids

Dual [action] [purpose]¹

Dual action¹

[Note to Reviewer: (parenthetical text) is optional; [bracketed text] is informational or an interchangeable option is presented, at least one of which must be used.]

Easy to use
Everyday formula
Gentle on floors
Great for [insert usage sites] [insert usage surfaces]
Keep your home clean
Makes cleaning easier
Multi-purpose
Multi-use
No rinsing required
Simple application
Suitable for use around the home
Takes care of [insert usage sites] [insert usage surface] (pet) stains and odors
Treat stains, (pet) odors and allergens**
Triple [action] [purpose]¹
Triple action¹
Works on (most) [insert usage sites] [insert usage surface]

[Other Claims]

(2 in 1) (3 in 1) (Action) (product)¹
(Dual) (Triple) (Advanced) Action¹
(Money back) (Satisfaction) (Guarantee) (or your money back) (or it's) (yours) (free)
Bonus (X) (oz) (X %) (more) (free)
New [note to reviewer: use for first 6 months only]
New and improved [note to reviewer: use for first 6 months only]
Save (\$X) now
Trial (size) (pack)
Try (me) (for) (free) (now) (today)
Value (size) (pack)

[Note to Reviewer: (parenthetical text) is optional; [bracketed text] is informational or an interchangeable option is presented, at least one of which must be used.]

[Qualifiers]

¹ [Note to Reviewer: Will be qualified by additional marketing claim as listed above or by descriptor as one of the following:]

For “Dual Action” or “2 in 1”

¹ cleaner and sanitizer

¹ cleaner and deodorizer

¹ deodorizer and sanitizer

For “Triple Action” or “3 in 1”

¹ cleaner, sanitizer and deodorizer

¹ cleaner, deodorizer and sanitizer

²when used according to sanitization instructions.

[∞] Sealed, Non-porous

^{**}Non-living allergens including: Pollen, Pet dander, Dust mite allergen(s)

[†]on sealed, nonporous floors

^Bhard, nonporous surfaces of

^α [insert sanitizer product name] is not to be used for sanitization using steam mode

[-or-]

^α Sanitize directions using [insert sanitizer product name] is not to be used with steam mode

[^]Note to Reviewer: Will be qualified with a symbol if “Staph” appears without “Staphylococcus aureus” immediately preceding it.

[^]Staphylococcus aureus

Note to Reviewer: Any combination of soils can be listed in any order, and some omitted in relation to cleaning claims:

[°]cleans ((/))removes): red wine, food stains, fruit juice, pet messes, mud/dirt, ink, chocolate, coffee/tea, cola, blood stains, grease, motor oil

[Note to Reviewer: (parenthetical text) is optional; [bracketed text] is informational or an interchangeable option is presented, at least one of which must be used.]

[Pre-Measured Packet Label]

JESSE

Active Ingredients:

Alkyl (60% C ₁₄ , 30% C ₁₆ , 5% C ₁₂ , 5% C ₁₈) dimethyl benzyl ammonium chlorides	0.21%
Alkyl (68% C ₁₂ , 32% C ₁₄) dimethyl ethylbenzyl ammonium chlorides	0.21%
Other Ingredients	99.58%
Total:	100.00%

EPA Reg. No.: 6297-2
EPA Est. No.: [XXX-XXX-XXX]

Keep Out of Reach of Children **CAUTION**

See (outer) [box] [container] [bag] for additional Precautionary Statements, First Aid, and Directions for Use.

Once cleaning is complete and [sachet] [packet] [pouch] is empty, recycle product according to local regulations if available or put in trash.

[Manufactured] [Distributed] [by] [for]:
Bissell Homecare, Inc.
2345 Walker Ave, NW
Grand Rapids, MI 49544

Batch/Lot: *(Note to Reviewer: The lot or batch number may also be stamped or imprinted directly on the packaging.)*

[(Net Contents: _____)] [#_ [pre-measured packets [sachets], ___ fl. oz. each
(Total Net Contents _____)

[Note to Reviewer: (parenthetical text) is optional; [bracketed text] is informational or an interchangeable option is presented, at least one of which must be used.]

[Optional Container Graphics - Note to Reviewer: Graphics presented below are representative and may vary slightly in printed labeling due to different photographic, color or illustrated design, but no change to the intent is to occur.]

[Recycling:]

PLEASE SEPARATE AND RECYCLE



US ONLY



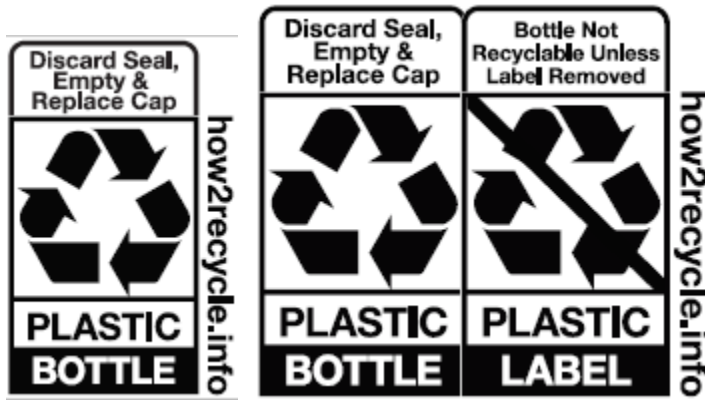
Recycleable
Packaging



Post-Consumer
Recycled Plastic



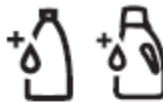
Recycle



[Preparation/Product Image:]



Formula Bottle



Add Formula



Pack-in
Formula Bottle



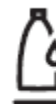
Add Formula



8oz Pack-in
Formula Bottle



Add Formula
(Antibacterial)




Formula Fill Line

[Note to Reviewer: (parenthetical text) is optional; [bracketed text] is informational or an interchangeable option is presented, at least one of which must be used.]

 Add Water

 Water Fill Line

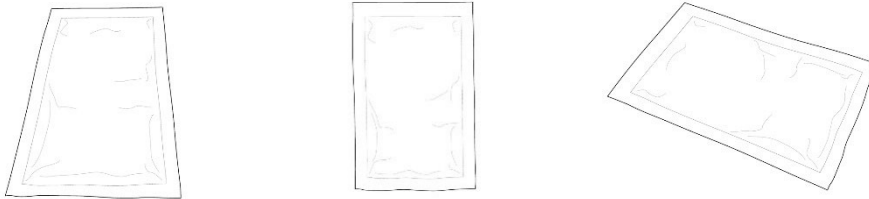
 Water Tank

 Mop & Bucket
(Hard Surface Formulas)

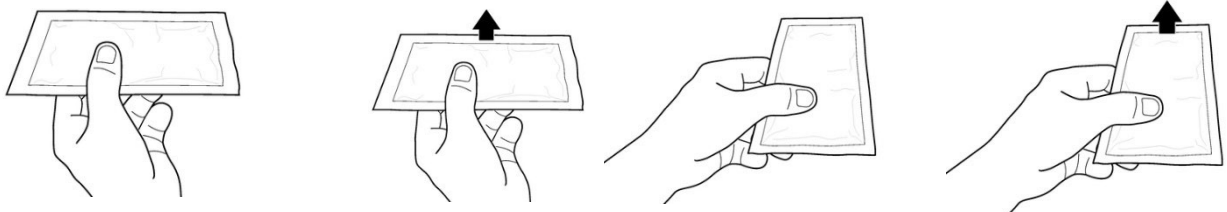
 Fill Tank Temp

[Pre-Measured Packets: The depictions may vary slightly in design but not intent.]

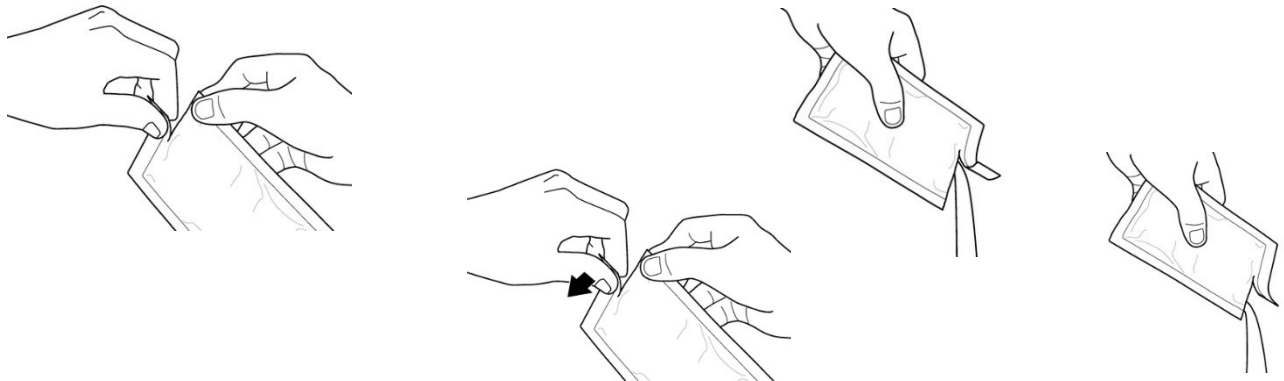
[Packet image]



[Insert pre-measured packet into machine:]



[Tear open pre-measured packet, pour]



[Note to Reviewer: (parenthetical text) is optional; [bracketed text] is informational or an interchangeable option is presented, at least one of which must be used.]

[Pre-clean/wet floor:]



[Miscellaneous brand logos:]



[Note to Reviewer: (parenthetical text) is optional; [bracketed text] is informational or an interchangeable option is presented, at least one of which must be used.]

[Area of Use:]



Entire Home



Auto



Garage



Home/Dock

[Floor Surface Materials - Note to Reviewer: images will be clarified on label with any required indication of hard, nonporous or food use where the text appears]



Wood Flooring



Glass



Tile



Metal



Vinyl



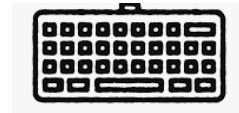
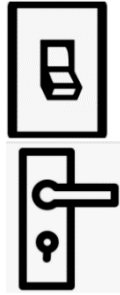
Bare Floor



Wood

[Note to Reviewer: (parenthetical text) is optional; [bracketed text] is informational or an interchangeable option is presented, at least one of which must be used.]

[Use Items:]



[Soils:]



Coffee



Pet Hair



Jelly



Pet Urine & Vomit
and/or blood stains



Fruit Juice



Pet Urine &
Skunk Odors



Cat



Cola



Pet



Dog

Pet images must be used in conjunction with the identification of soils.

[Note to Reviewer: (parenthetical text) is optional; [bracketed text] is informational or an interchangeable option is presented, at least one of which must be used.]



Red Wine



Pet (solid paw print)



Dirt



Pet Tracked-in Dirt



High Traffic



Blood



Heavily Soiled



Makeup



Blood



Soiled Materials



Motor Oil



Food Grease

[Allergens:]



Pollen



Dander



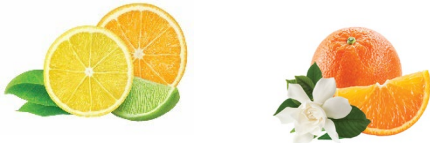
Dust Mite Waste

[Note to Reviewer: (parenthetical text) is optional; [bracketed text] is informational or an interchangeable option is presented, at least one of which must be used.]

BISSELL Pet Foundation – Charitable indication on label which does not imply use of the product on animals but that charitable donations are made by BISSELL to the identified foundation:



[Optional Fragrance Graphic if fragrance is described:]



[Note to Reviewer: (parenthetical text) is optional; [bracketed text] is informational or an interchangeable option is presented, at least one of which must be used.]

[NOTE TO REVIEWER: THE FOLLOWING USER MANUALS ARE ONLY CONSIDERED A REQUIRED PART OF THE LABEL WHEN THE ANTIMICROBIAL CONTAINER LABEL USES DIRECTIONS FOR USE OPTION B.]

A user guide will accompany the pesticide solution when the product is packaged with a floor cleaning machine. There are several different User Guides for different model numbers, provided here as a representative of the models' series. Additionally, they are a representation of text that may be found within a specific model User Guide. The sections may appear in a different order or sections not related to the registered product omitted. Graphics may vary slightly in illustration but not intent. Capitalization, punctuation, and omission of steps and renumbering is permitted, and may be necessary to make a cohesive instruction depending on the model. The table of contents is provided for the label reviewer and is not to be reproduced for the product as sold.

Contents:

SPINWAVE Brand Manual

ROBOT Units Manual

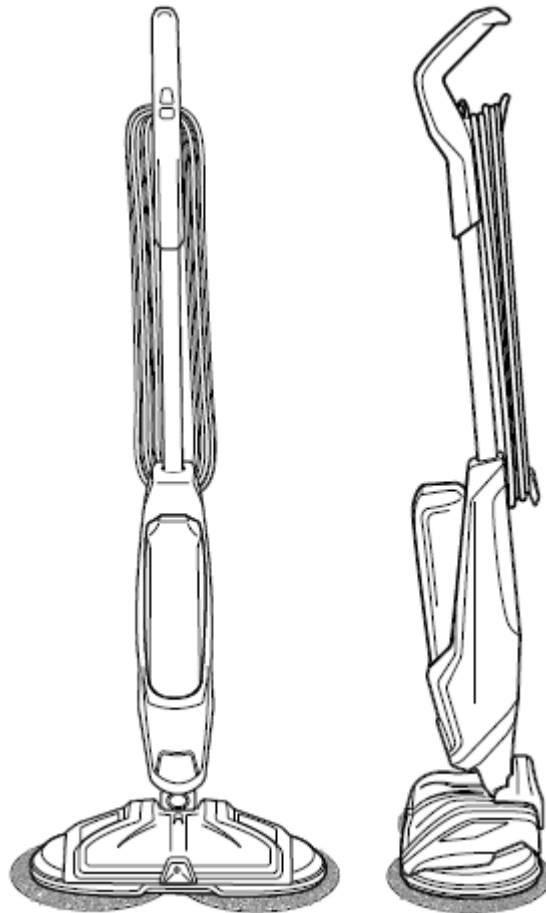
CROSSWAVE Brand Manual]

[Note to Reviewer: (parenthetical text) is optional; [bracketed text] is informational or an interchangeable option is presented, at least one of which must be used.]



SPINWAVE™

USER GUIDE [INSERT SERIES #] SERIES



[Note to Reviewer: (parenthetical text) is optional; [bracketed text] is informational or an interchangeable option is presented, at least one of which must be used.]

IMPORTANT SAFETY INSTRUCTIONS

READ ALL INSTRUCTIONS BEFORE USING YOUR SPINWAVE™.

When using an electrical appliance, basic precautions should be observed, including the following:

WARNING

TO REDUCE THE RISK OF FIRE, ELECTRIC SHOCK, OR INJURY:

[Note to Reviewer: Electrical Safety Statements will be inserted here - INCLUDING:]

»Use only BISSELL cleaning products intended for use with this appliance to prevent internal component damage. See the Cleaning Fluid section of this guide.]

SAVE THESE INSTRUCTIONS FOR FUTURE USE

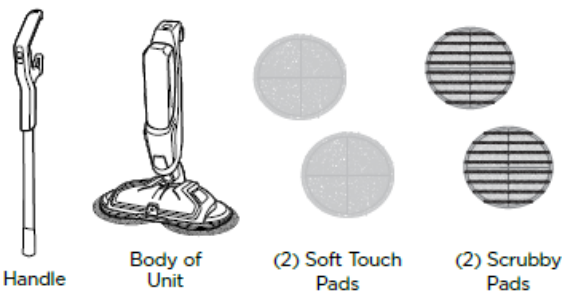
This model is for household use only. Commercial use of this unit voids the manufacturer's warranty.

Thanks for buying a BISSELL SpinWave™

We love to clean and we're excited to share one of our innovative products with you. We want to make sure your hard surface floor cleaner works as well in two years as it does today, so this guide has tips on using (pages #-#), maintaining (pages #-#), and if there is a problem, troubleshooting (page #).

What's In The Box?

[Note to Reviewer: examples of Graphics and Naming of Items may vary slightly.]



8 fl. oz. BISSELL

Multi-Surface Formula



8 fl. oz. trial size of [Insert Name of Hard Surface Sanitizer, EPA Reg. No. 6297-2]

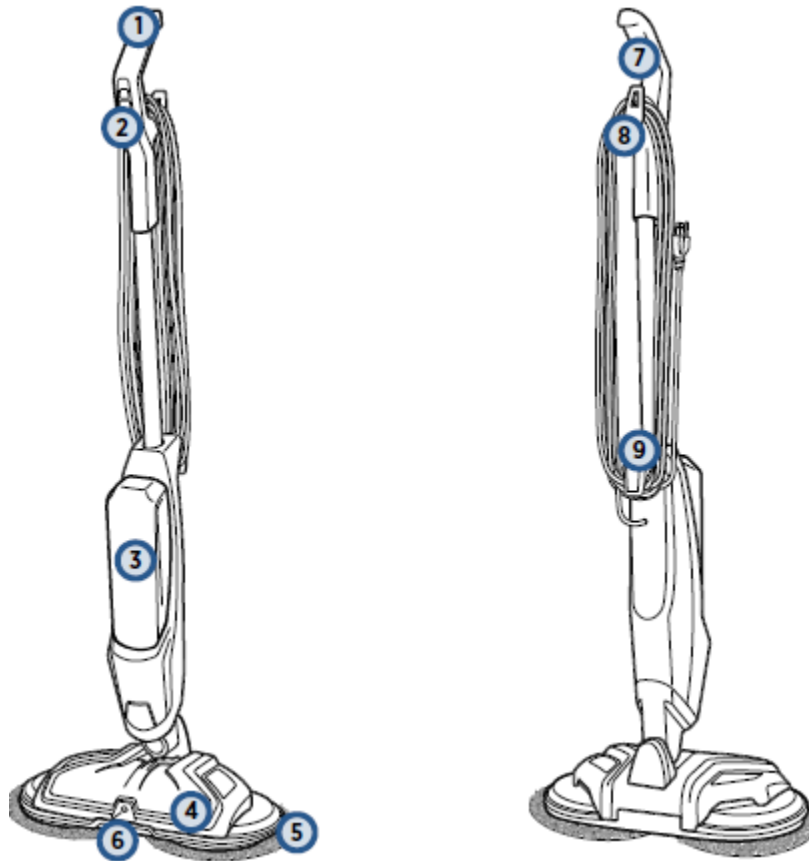
[Note to Reviewer: (parenthetical text) is optional; [bracketed text] is informational or an interchangeable option is presented, at least one of which must be used.]

NOTE: Standard accessories may vary by model. To identify what should be included with your purchase, please refer to the “Carton Contents” list located on the carton top flap.

Safety Instructions.....[Page #]	Troubleshooting.....[Page #]
Product View.....[Page #]	Warranty.....[Page #]
Assembly.....[Page #]	Service.....[Page #]
Operations.....[Page #]	Product Registration.....[Page #]
Maintenance & Care.....[Page #]	Consumer Care.....[Page #]

Getting to Know Your SpinWave™

[Note to Reviewer: The below or similar graphics will be used. Names of parts and placement of numbers could vary.]



- 1 [insert part name]
- 2 [insert part name]
- 3 [insert part name]
- 4 [insert part name]
- 5 [insert part name]

- 6 [insert part name]
- 7 [insert part name]
- 8 [insert part name]
- 9 [insert part name]

[Note to Reviewer: (parenthetical text) is optional; [bracketed text] is informational or an interchangeable option is presented, at least one of which must be used.]

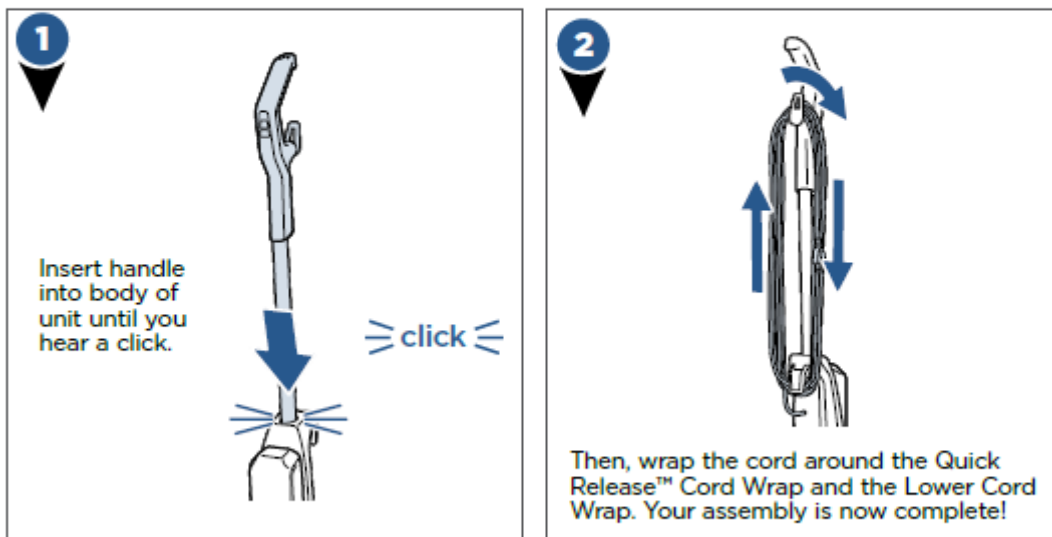
Assembly

[Note to Reviewer: Example text and images. This may vary slightly.]

⚠ WARNING

Do not plug in your SpinWave™ until you are familiar with all instructions and operating procedures.

Your BISSELL SpinWave™ machine comes in two easy-to-assemble components and does not require any tools to assemble.



NOTE: To easily unwrap the cord for use, just turn the Quick Release™ Cord Wrap downward to remove the cord from the cord wrap.

Cleaner and Sanitizer Formulas

⚠ WARNING

To reduce the risk of fire and electric shock due to internal component damage, use only BISSELL cleaning fluids intended for use with the hard floor device.

(Keep plenty of SpinWave™ formulas on hand so you can clean your hard floors whenever it fits your schedule.)

Always use SpinWave™ formulas in your machine. Other solutions may harm the machine and void the warranty.

[Note to Reviewer: (parenthetical text) is optional; [bracketed text] is informational or an interchangeable option is presented, at least one of which must be used.]

SPINWAVE™ FORMULAS		
[Insert Graphic Image of Bottle]	[Insert Graphic Image of Bottle]	[Insert Graphic Image of Bottle]
Multi-Surface Formula	Wood Floor Formula	Hard Surface Sanitizer
Great for cleaning ALL sealed hard floors	Restore your wood floors' natural shine	Clean and Sanitize your floor in one easy step

Attaching Mop Pads

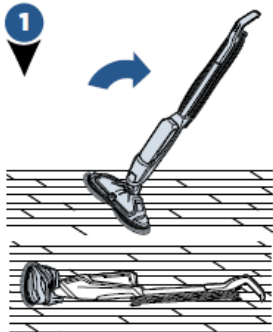
[Note to Reviewer: Below is an example of text and graphics. This may vary slightly.]

Your BISSELL SpinWave™ may have come with two different mop pads:



(2) Soft Touch Pads (2) Scrubby Pads

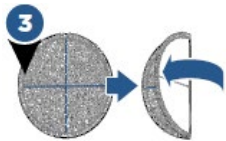
The Soft Touch Pad is best for everyday use on delicate flooring like sealed hardwoods and laminate. The Scrubby Pad is best used to power through tough, sticky messes.



Your SpinWave™ may have come with mop pads attached. If not, to attach mop pads, carefully lay machine down on the floor.

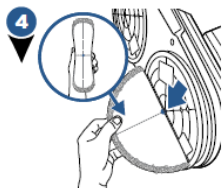


The back of the mop pad has a small dot in the center of the pad.

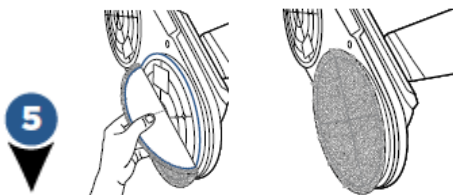


First, fold the pad in half, making sure the cloth material is inside the fold.

[Note to Reviewer: (parenthetical text) is optional; [bracketed text] is informational or an interchangeable option is presented, at least one of which must be used.]



Then, with the mop pad folded, line up the small dot in the center of the pad with the middle screw on the bottom of the foot.

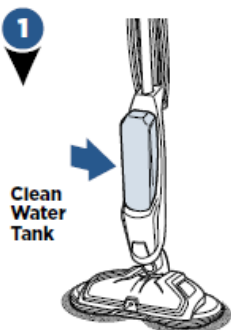


Lastly, line up the edge of the mop pad with the inner ring on the foot, attaching the mop pad to the hook and loop material on the bottom of the foot.

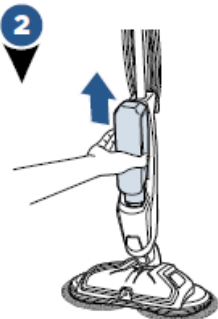
NOTE: These next steps are to help you apply the mop pads more accurately onto the machine.

Filling Your Clean Water Tank

[Note to Reviewer: The below or similar graphics depicting the steps may be used with the text below.]



The clean water tank is located on the front of the machine.



Lift the clean water tank straight up to remove from the machine.

[Note to Reviewer: (parenthetical text) is optional; [bracketed text] is informational or an interchangeable option is presented, at least one of which must be used.]



Unscrew the cap from the clean water tank.

The clean water tank has two measuring volumes depending on the amount of space you would like to clean.

[Note to Reviewer: The below table does not need to appear in the printed manual but is a reference for inputting the appropriate product and water volumes in the use directions steps indicated below.]

FORMULA TANK - DILUTION PREPARATION INSTRUCTIONS

[MODEL NAME]	(FILL LINE)	Amount of Product (fl. oz.)	Amount of (Warm) Tap Water
[Insert CrossWave Model name(s)]	(Large Area (700 sq ft)) (Small Area (<350 sq ft)) (NA)	0.5	3 fl. oz.
		1	6 fl. oz.
		1.5	9 fl. oz.
		2	12 fl. oz.
		2.5	15 fl. oz.
		3	18 fl. oz.
		3.5	21 fl. oz.
		4	24 fl. oz.
		4.5	27 fl. oz.
		5	30 fl. oz.

[Step 4 for machines with a small and large fill line]

[Option 1: This option may ONLY appear if the accompanying pesticide container uses **Option A** from the Directions for Use Section I for the container label.]

The clean water tank has a Large Area volume and a Small Area volume. Pick the one that best suits the space that you would like to clean.

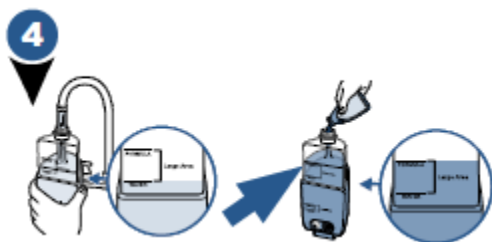
The Large Area fill lines are for areas up to 700 sq. ft.

The Small Area fill lines are for areas under 350 sq. ft.

Use warm tap water and the appropriate BISSELL formula.

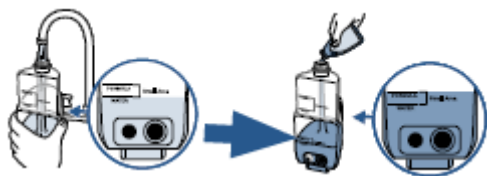
[Note to Reviewer: (parenthetical text) is optional; [bracketed text] is informational or an interchangeable option is presented, at least one of which must be used.]

[Option 2: This option must appear if the accompanying pesticide container uses Option B from the Directions for Use Section I. for the container label. It may optionally be used for all units/models.]



For **large area cleaning** (up to 700 sq ft)

- Fill formula tank with (warm) tap water to the second water fill line [insert water volume from table above].
- Then add BISSELL® SpinWave™ formula to the second formula fill line [insert formula volume from table above].



For **small area cleaning** (<350 sq ft)

- Fill formula tank with (warm) tap water to the first water fill line [insert water volume from table above].
- Then add BISSELL® SpinWave™ formula to the first formula fill line [insert formula volume from table above].

[Step 4 for machines with only one fill line:]

- [Fill machine formula tank with (warm) water to Water fill line [insert water ounces as indicated in Product Dilution Instructions table].]
[Add (warm) (tap) water as indicated by the fill line on the (clean) (water) tank [(insert water ounces as indicated in Product Dilution Instructions table)][(as indicated in the Production Dilution Table) (below).]
- [Then add formula to Formula fill line [insert formula ounces as indicated in Product Dilution Instructions table].]
[Add BISSELL formula as indicated by the fill lines on the (clean) (water) tank (insert water ounces as indicated in Product Dilution Instructions table) (as indicated in the Production Dilution Table) (below) (and close flap.)]

[Step 4 if a pre-measured packet inserted into the machine. Graphics are optional:]

[For Use with pre-measured sachets/packets in machine with an integrated dispenser in formula-only tank]

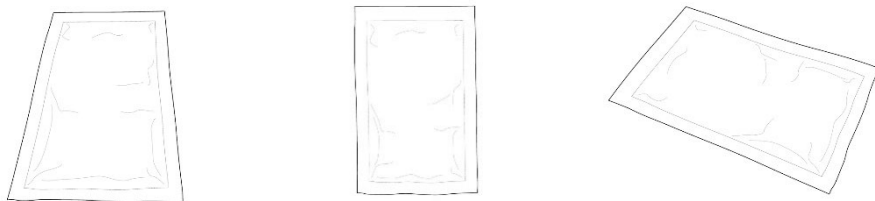
- Fill the Clean Water Tank with (warm) water to the Fill line indicated on the tank – [insert water volume from table above]. (Use warm water.)
- Lift Formula lid and place a [insert formula ounces as indicated in Product Dilution instructions table] (BISSELL) [insert product name] [sachet] [packet] [pouch] in holder.

[For Use with pre-measured sachets/packets in machine withOUT an integrated dispenser in formula-only tank]

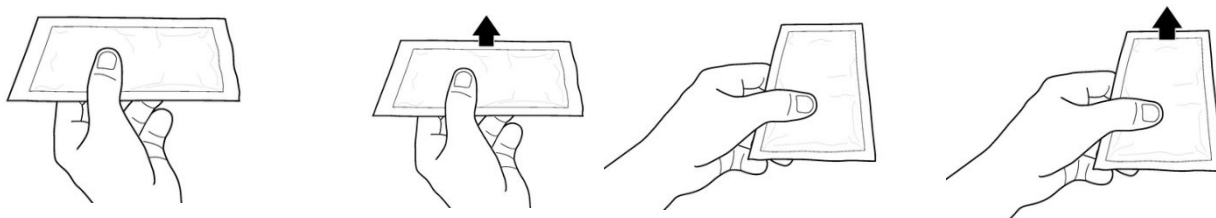
- Fill the Clean Water Tank with (warm) water to the Fill line indicated on the tank – [insert water volume from table above]. (Use warm water.)
- Tear open [insert formula ounces as indicated in Product Dilution instructions table] (BISSELL) [insert product name] [sachet] [packet] [pouch] at indicated notch and pour entire contents into tank.

[Note to Reviewer: (parenthetical text) is optional; [bracketed text] is informational or an interchangeable option is presented, at least one of which must be used.]

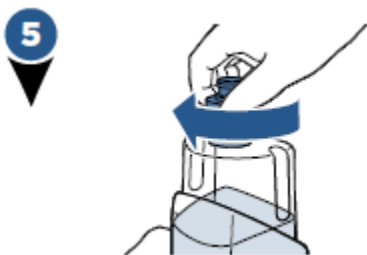
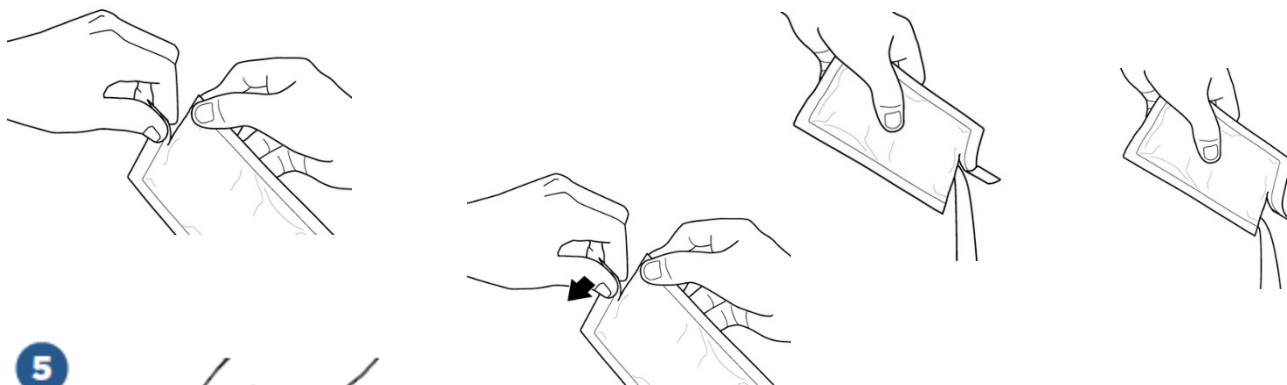
[Packet image]



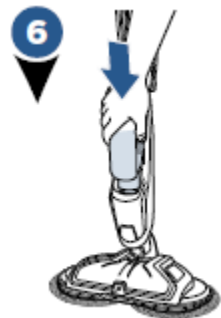
[Insert pre-measured packet into machine:]



[Tear open pre-measured packet, pour]



Screw the cap tightly back onto the clean water tank until completely closed.



Slide the clean water tank back into place until you hear a click.

[Note to Reviewer: (parenthetical text) is optional; [bracketed text] is informational or an interchangeable option is presented, at least one of which must be used.]

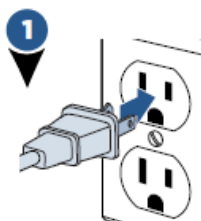
[A few notes about filling the clean water tank:

- Fill with warm tap water and add the appropriate BISSELL solution. **DO NOT USE BOILING WATER. DO NOT HEAT WATER OR TANK IN MICROWAVE.]**

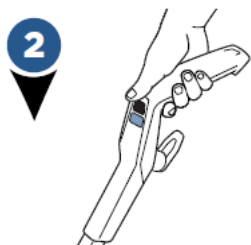
Cleaning Your Sealed Hard Floors

ATTENTION: This machine is designed to be used only on sealed hard floors and should not be used on carpet or rugs. For best cleaning results, sweep or vacuum the floor surface prior to using the BISSELL SpinWave™. This is to avoid scratching or damaging floors from sharp debris.

[Note to Reviewer: The below or similar graphics depicting the steps may be used with the steps below.]



Plug machine into a properly grounded outlet.

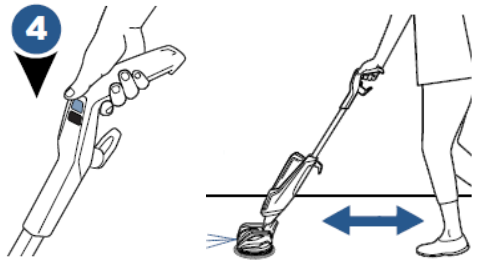


Press the ON/OFF button to start cleaning your sealed hard floors.



Recline the body of the machine backward to start the rotating mop pads.

[Note to Reviewer: (parenthetical text) is optional; [bracketed text] is informational or an interchangeable option is presented, at least one of which must be used.]



To clean, push the **SPRAY** button to dispense solution.



Solution will spray out of the nozzle on the front of the foot. You should hear a soft buzzing noise each time you press the **SPRAY** button to indicate solution being dispensed.

To clean: Push the **SPRAY** button to dispense solution. **To Sanitize:** Remove visible soil. Using the Hard Surface Sanitizer (or insert brand name), push the **SPRAY** button to dispense solution. Allow to remain visibly wet for 5 minutes.

NOTE: Hard Surface Sanitizer formula is for use on hard, sealed floors only. Read sanitizer container label fully prior to use.



For more difficult and stuck on messes, spray solution directly on mess and line up one of the mop pads parallel to the mess. Move mop pad over mess and slowly move machine back and forth to clean, continuing to spray solution as needed. After cleaning, repeat Sanitize step.

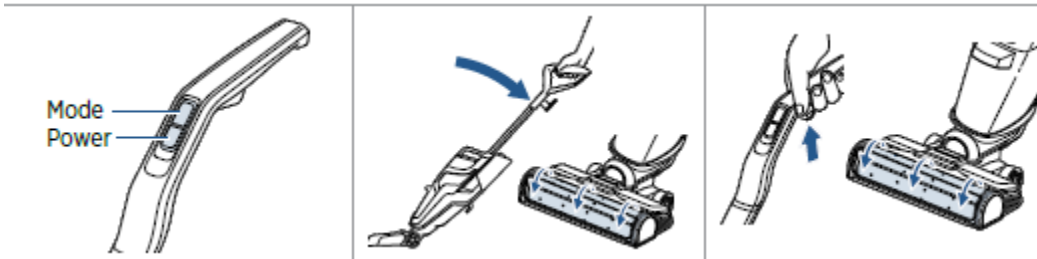
(TIP: For optimum cleaning, perform overlapping cleaning strokes while dispensing cleaning solution. Care should be taken to not over wet the floor surface, especially when cleaning wood and other delicate floor surfaces.)

(TIP: When cleaning near baseboards, edges, or furniture you may feel a slight pull from the unit due to bouncing off the surface.)

(NOTE: When finished cleaning, make sure to push the **OFF** button before standing the machine upright as the mop pads will continue to spin until the machine is turned **OFF**.)

[Note to Reviewer: (parenthetical text) is optional; [bracketed text] is informational or an interchangeable option is presented, at least one of which must be used.]

[ALTERNATE CLEANING YOUR FLOORS SECTION]

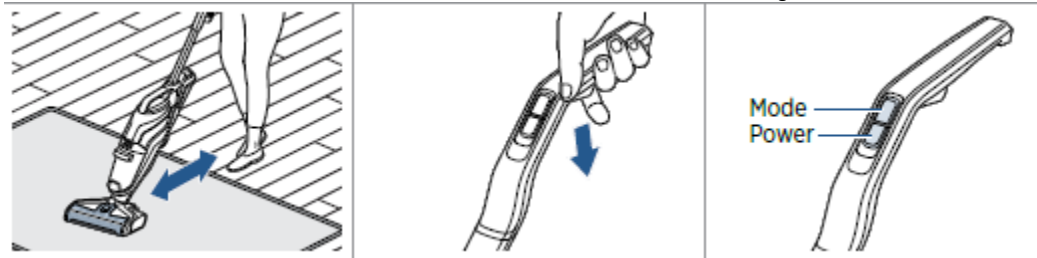


1. Press the power button ON. Press the mode button to switch between modes.

2. Recline the machine to start the brush roll spinning. When the machine is standing upright, brush roll will not spin.

3. Before each use, hold the solution spray trigger for 10 seconds to prime the system with cleaning solution.

Note: LED lights are always illuminated, but turn blue when holding the trigger. Bubbles will appear in the brush roll window when the solution is flowing.



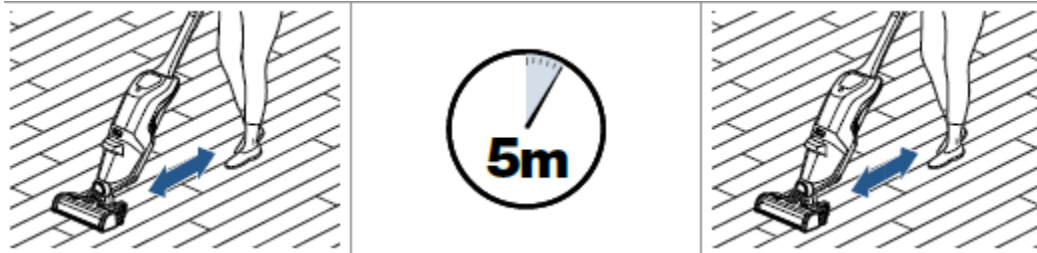
4. To clean, hold the solution spray trigger to apply solution on forward pass. For heavier soils, press the Steam button if available.

5. Release the trigger and make a backward pass without dispensing solution.

6. Turn OFF the machine by pressing the power button.

Sanitizing Hard Floors

Please read the Hard Floor Sanitize formula label prior to each use. Use on hard nonporous floors only.



1. Follow cleaning instructions above to remove visible soils. To Sanitize: Hold trigger down to apply solution to floor.

2. Allow formula to remain visibly wet on the floor for five minutes.

3. With the spray trigger released, make forward and backward passes to extract solution.

[Note to Reviewer: (parenthetical text) is optional; [bracketed text] is informational or an interchangeable option is presented, at least one of which must be used.]

Cleaning Your SpinWave™

⚠️ WARNING
To reduce the risk of fire, electric shock or injury, turn power OFF and disconnect plug from electrical outlet before performing maintenance or troubleshooting.

⚠️ WARNING
Do not set the machine on carpet, rug, or other fabric surface when mop pad is removed as hook and loop material on foot may damage them.

⚠️ WARNING
Do not store machine on wet mop pads as they may damage wood or other delicate floors.

[Note to Reviewer: Instructions and graphics for turning off, removing maps, washing them and wrapping cord will be displayed here.]

NOTE: Any solution remaining in the clean water tank should be emptied prior to machine storage.

NOTE: Store cleaner in a protected, dry area. Since this product uses water, it must not be stored where there is danger of freezing. Freezing may damage internal components and void the warranty.

Troubleshooting

Problem	Possible causes	Remedies
[Title Display]	[Listed causes]	[Suggested fix]

Warranty

[Note to Reviewer: Warranty text displayed here may vary slightly.]

This warranty gives you specific legal rights, and you may also have other rights which may vary from state to state. If you need additional instruction regarding this warranty or have questions regarding what it may cover, please contact BISSELL® Consumer Care by E-mail or telephone as described below.

It may be necessary to obtain some of your personal information, such as a mailing address, to fulfill terms of this warranty. Any personal data will be handled pursuant to BISSELL’s Privacy Policy, which can be found online at www.BISSELL.com/privacy-policy.

Limited Two-Year Warranty

[Note to Reviewer: (parenthetical text) is optional; [bracketed text] is informational or an interchangeable option is presented, at least one of which must be used.]

Subject to the ***Exceptions and Exclusions from the Terms of the Limited Warranty**, upon receipt of the product BISSELL will repair or replace (with new, refurbished, lightly used, or remanufactured components or products), at BISSELL's option, free of charge from the date of purchase by the original purchaser, for two years, any defective or malfunctioning part.

See information below on "If your BISSELL product should require service".

This warranty applies to product used for personal, and not commercial or rental, service. This warranty does not apply to fans or routine maintenance components such as filters, belts or brushes. Damage or malfunction caused by negligence, abuse, neglect, unauthorized repair, or any other use not in accordance with the user guide is not covered. This warranty will only be valid if the product is used in the same country in which it was sold.

BISSELL is not liable for incidental or consequential damages of any nature associated with the use of this product. BISSELL's liability will not exceed the purchase price of the product.

Some states do not allow the exclusion or limitation of incidental or consequential damages, so the above limitation or exclusion may not apply to you.

***Exceptions and Exclusions from the Terms of the Limited Warranty**

This warranty is exclusive and in lieu of any other warranties, either oral or written. Any implied warranties, which may arise by operation of law, including the implied warranties of merchantability and fitness for a particular purpose, are limited to the two-year duration from the date of purchase as described above.

Some states do not allow limitations on how long an implied warranty lasts, so the above limitation may not apply to you.

(NOTE: Please keep your original sales receipt. It provides proof of date of purchase in the event of a warranty claim.)

Service

[Note to Reviewer: Machine Service contact information will be provided here.]

Register your product today!

[Note to Reviewer: Product registration, rewards, feedback request etc. will be inserted here.]

Manufactured [by] [for]:
Bissell Homecare, Inc.
2345 Walker Ave, NW
Grand Rapids, MI 49544

Manufactured by
[BISSELL brand
Questions or comments 1.800.237.7691
©(year) BISSELL Homecare Inc., Grand
Rapids, MI 49544 USA
www.bissell.com]

©(year) BISSELL Homecare Inc.

BISSELL International Trading Company BV
Stadhouderskade 55,
1072 AB Amsterdam
The Netherlands

For Consumer Care contact:
BISSELL Homecare, Inc.
P.O. Box 1888
Grand Rapids, MI 49501

[Questions?] [Comments?] [Call XXX-XXX-XXXX]

[Note to Reviewer: (parenthetical text) is optional; [bracketed text] is informational or an interchangeable option is presented, at least one of which must be used.]



[INSERT SERIES #] SERIES

[Insert Brand Name][CrossWave] Robot
(ROBOTOIC VACUUM)

[Sections may vary depending on model.]

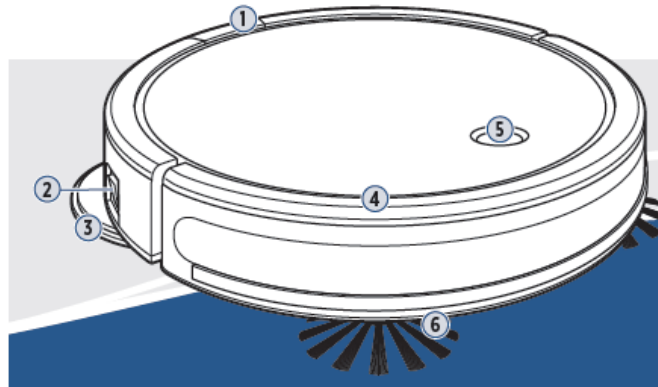
What's in the Box(?)..... [insert page #]
Docking and Charging Your Robot..... [insert page #]
Control Panel and Digital Display.....[insert page #]
Connecting to the App.....[insert page #]
Mapping.....[insert page #]
Filling the Clean Water Tank.....[insert page #]
[Automatic][Scheduled] Cleaning..... [insert page #]
Before You Clean.....[insert page #]
Cleaning Your Floors.....[insert page #]
Mop Mode.....[insert page #]
Dry Vacuum Mode.....[insert page #]
Using the Self-Cleaning Cycle.....[insert page #]
After-Cleaning Care..... [insert page #]
Cleaning the Brush Roll.....[insert page #]
Removing and Cleaning the Caster Wheel.....[insert page #]
Replacing the Edge Cleaning Brushes.....[insert page #]
Storing Your Robot.....[insert page #]
Cleaning the Sensors.....[insert page #]
Replacing the Battery.....[insert page #]
Troubleshooting.....[insert page #]
Warranty.....[insert page #]

[Note to Reviewer: (parenthetical text) is optional; [bracketed text] is informational or an interchangeable option is presented, at least one of which must be used.]

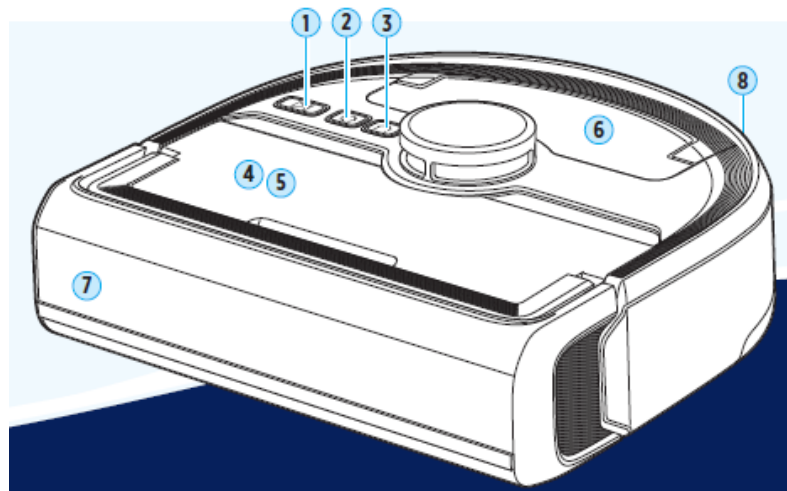
[Note to Reviewer: examples of Graphics and Naming of Items may vary]

Product Overview

1. Tank Release Button
2. Power Switch
3. Mop Pads
4. Bumper
5. Start/Pause Button
6. Edge Cleaning Brushes



1. Play/Pause Button
2. Mode Button
3. Home Button
4. Dirty Water Tank
5. Brush Roll (under tank)
6. Clean Water Tank
7. Bumper
8. Power Switch



(Meet your new BISSELL product!)

(Go online for a comprehensive walkthrough of your (new) purchase!

This guide has everything you need to get ready for your first use, including setting up, using and maintaining your machine, but online you'll find additional resources like tips and troubleshooting, videos, product registration, parts and more.

Go to support.BISSELL.com.)

(Go to support.BISSELL.com for a comprehensive walkthrough of your new purchase, including videos, tips, support, and more. Want to get started right away? This guide has all the information you need to setup your new product. Let's take a look...)



[Note to Reviewer: (parenthetical text) is optional; [bracketed text] is informational or an interchangeable option is presented, at least one of which must be used.]

IMPORTANT SAFETY INSTRUCTIONS

READ ALL INSTRUCTIONS BEFORE [USE] [USING YOUR] ([Insert Brand Name])[CrossWave] ROBOT).

(When using an electrical appliance, basic precautions should be observed, including the following:)

() () () **WARNING**

TO REDUCE THE RISK OF FIRE, ELECTRIC SHOCK, OR INJURY (WHEN USING AN ELECTRICAL APPLIANCE, BASIC PRECAUTIONS SHOULD BE OBSERVED, INCLUDING THE FOLLOWING):

[Note to Reviewer: Electrical Safety Statements will be inserted here - INCLUDING:]

- Use only BISSELL cleaning products intended for use with this appliance to prevent internal component damage. See the “Mop Mode: Choosing Your Formula” section of this manual.

SAVE THESE INSTRUCTIONS (FOR FUTURE USE)

(THIS MODEL IS FOR HOUSEHOLD USE ONLY.)

IMPORTANT INFORMATION

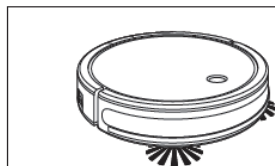
- Do not turn your appliance ON until you are familiar with all instructions and operating procedures.
- This product contains a wireless device. Refer to FCC/IC Notice Document for regulatory information.

[Note to Reviewer: A statement regarding the Software Licensing may be inserted here.]

What's In The Box?

(Standard accessories may vary by model.)

[Note to Reviewer: examples of Graphics and Naming of Items may vary slightly and some may be omitted]



[Insert Brand Name]
Robot (with Dirt Bin)



Mop Tank with Mop
Pads

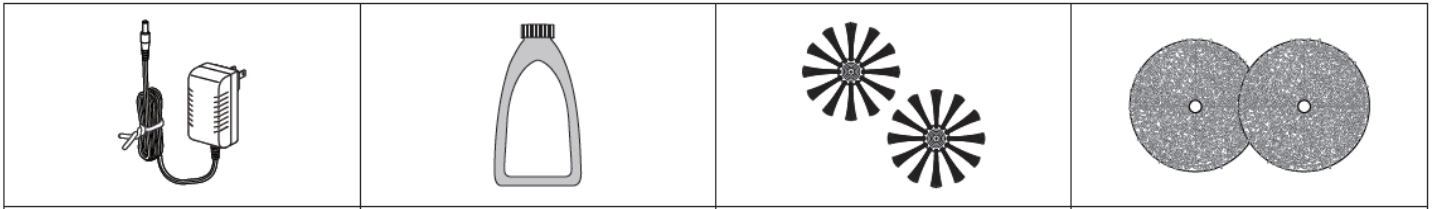


Docking Station



Docking Tray

[Note to Reviewer: (parenthetical text) is optional; [bracketed text] is informational or an interchangeable option is presented, at least one of which must be used.]



Power Adapter

Trial[-Size] [Formula]
[Insert name of Cleaner
and/or Hard Surface Sanitizer]

(Edge Cleaning Brushes)
(select models)
(Extra Brush Roll)

(2) Extra Mop Pads



Brush holder

[Note to Reviewer: (parenthetical text) is optional; [bracketed text] is informational or an interchangeable option is presented, at least one of which must be used.]

Docking and Charging Your Robot

(Note: The Docking Station & Docking Tray must be installed on a hard surface. The robot's soft surface sensors prevent it from cleaning carpets and area rugs in mop mode.)

[Note to Reviewer: Graphics and instructions for plugging in and charging the Robot will be provided here, containing no FIFRA text.]

Control Panel and Digital Display

[Note to Reviewer: The control will display the different modes and buttons available to a particular model, so they may vary slightly and are only applicable if there is such a display.]

1. Play/Pause Button
2. Mode Button
3. Home Button
4. Arrow Down
5. Dirty Tank Full Indicator
6. Error Indicator
7. Clean Tank Empty Indicator
8. Arrow Up
9. Low Battery Indicator
10. Spot [Clean] [Mode]
11. Clean-Out Cycle Mode
12. Auto Clean Mode
13. Wi-Fi

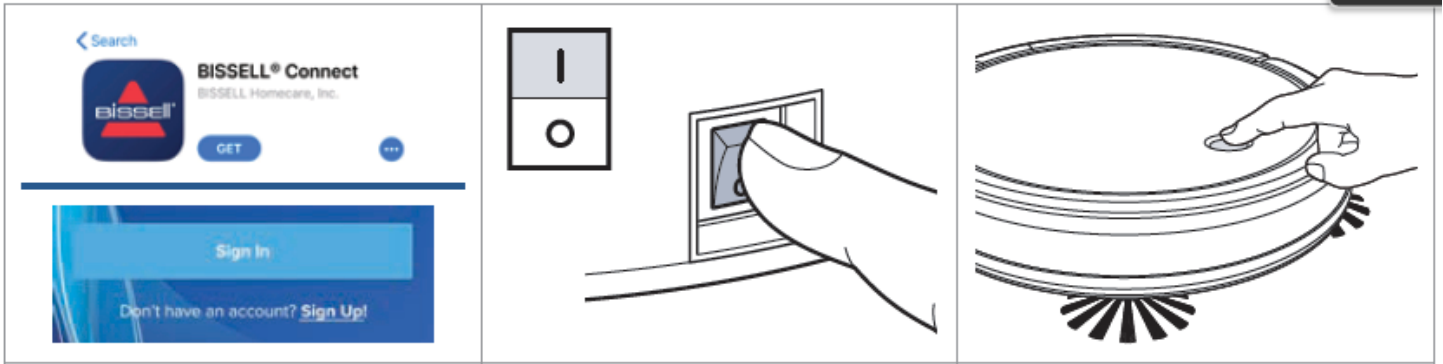
Connecting to the App

(For more help, visit support.BISSELL.com.)

Downloading the BISSELL Connect App [to customize your clean.][means you can change your robot's cleaning mode, start, pause, or stop your robot, schedule cleanings, view notifications, track your cleaning history, and troubleshoot all from the palm of your hand.] (Create cleaning zones or keep out zones, schedule cleanings, view the robot's cleaning path, track the cleaning history, view notifications, troubleshoot and more – all from the palm of your hand.)

[Note to Reviewer: examples of Graphics, Naming and Text and order may vary slightly, with steps omitted if not applicable to a model.]

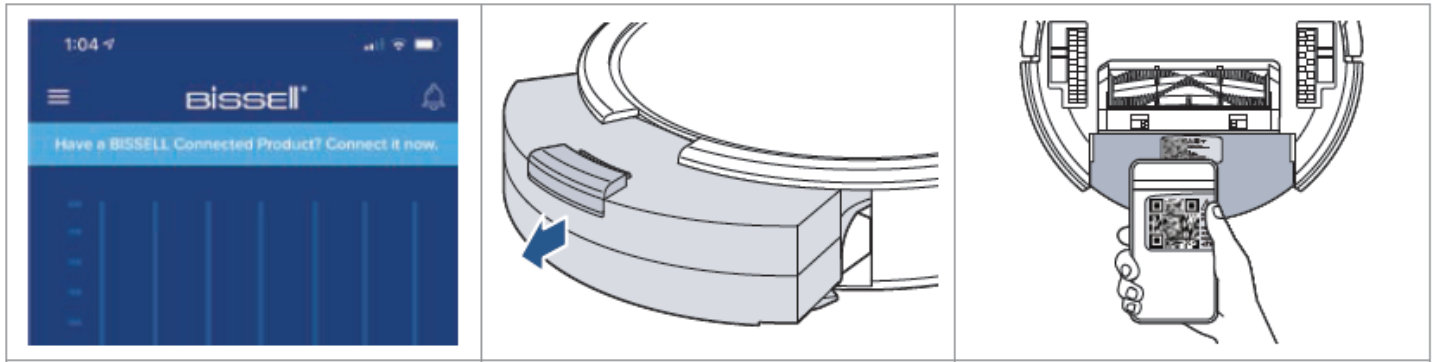
[Note to Reviewer: (parenthetical text) is optional; [bracketed text] is informational or an interchangeable option is presented, at least one of which must be used.]



1. [In the App (or Google Play) Store search “BISSELL Connect” and download.]
[Download the BISSELL Connect App from the App Store or Google Play.]
Once downloaded, open the app and sign in or create a new login.

2. Make sure you’re near your WiFi router before turning the robot ON (I).

3. [To put the robot in pairing mode, press and hold the Start/Pause Button for 5 seconds until you hear a single beep.][To pair your robot, press and hold the mode button for 3 seconds.]



4. From the app, select “Have a BISSELL Connected Product? Connect it now.” [Then choose your product from the menu.]
[Choose “[INSERT BRAND] Robot”.]

5. Remove the Dirt Bin and turn the robot over to access the setup QR code.

6. Scan the QR code (on the bottom of the robot)(,) (and) follow the instructions in the app to pair.

7. The wifi indicator light will stay illuminated when your robot is successfully connected.

Mapping

[Note to Reviewer: A description of virtual mapping a home for cleaning can be described here with no FIFRA text included.]

Automatic Cleaning

Download the BISSELL Connect App to set up automatic features.

You can designate a day and time for your robot to run automatically using the BISSELL Connect App. Once the robot is connected to the app, go to the Schedule tab and follow the on-screen prompts.

[Note to Reviewer: (parenthetical text) is optional; [bracketed text] is informational or an interchangeable option is presented, at least one of which must be used.]

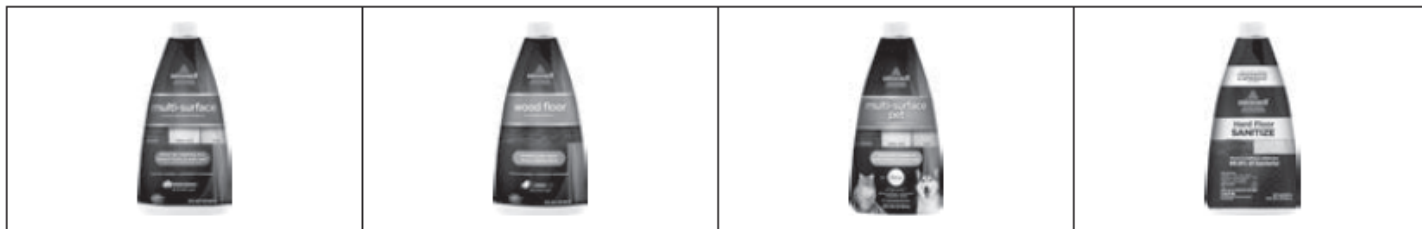
Mop Mode (continued)

More of a video person? Open up the BISSELL Connect App for how-to videos.

Choosing Your Formula

Keep plenty of BISSELL® formulas on hand so you can clean whenever it fits your schedule. Always use genuine BISSELL formulas in your machine. Other formulas may harm the machine and void the warranty. Do not use Hard Floor Sanitize Formula on area rugs or carpet.

[Note to Reviewer: Cleaning product names and descriptions are subject to change or select ones may be omitted.]



Multi-Surface Formula
Great for cleaning all
Sealed hard floors.

Wood Floor Formula
Restores your wood
Floor's natural shine.

**Pet Multi-Surface with
Febreze Formula**
Removes pet odors to
clean and refresh.

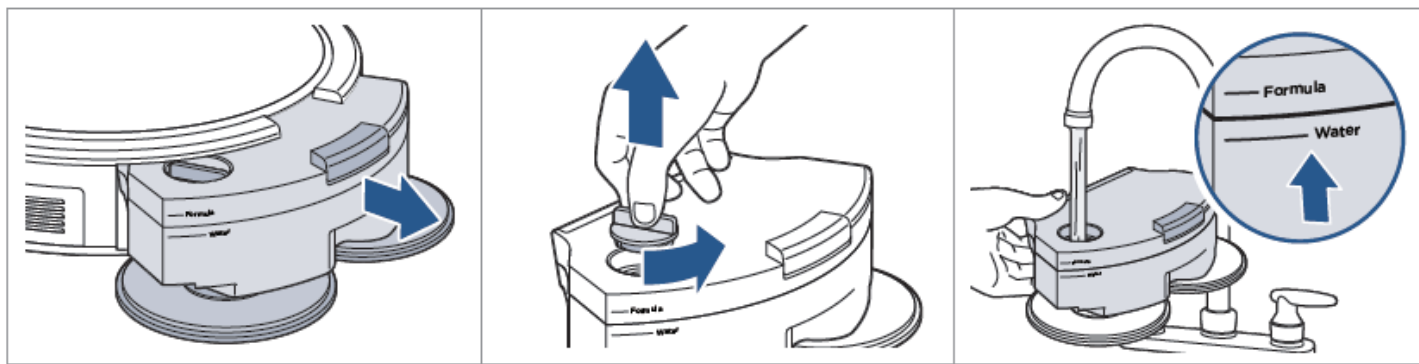
Hard Floor Sanitize
([INSERT BRAND NAME])
Cleans and sanitizes,
Eliminates 99.9% of bacteria*.

(Certain trademarks used under license from [insert company name] or its affiliates.)

*Kills 99.9% of *Enterobacter aerogenes* (ATCC 13408)(,) (and) *Staphylococcus aureus* (ATCC 6538) (and *Salmonella enterica* (ATCC 10708))

Filling [The][Your] [Mop][Clean Water] Tank [Note to Reviewer: Graphics may vary slightly.]

In Mop Mode, your BISSELL® [insert brand name] Robot will clean using dual rear rotating mop pads combined with a BISSELL formula to clean your home's hard floors. While mopping, your [insert brand name] Robot will also sweep and collect a limited amount of dry debris for a complete cleaning experience.

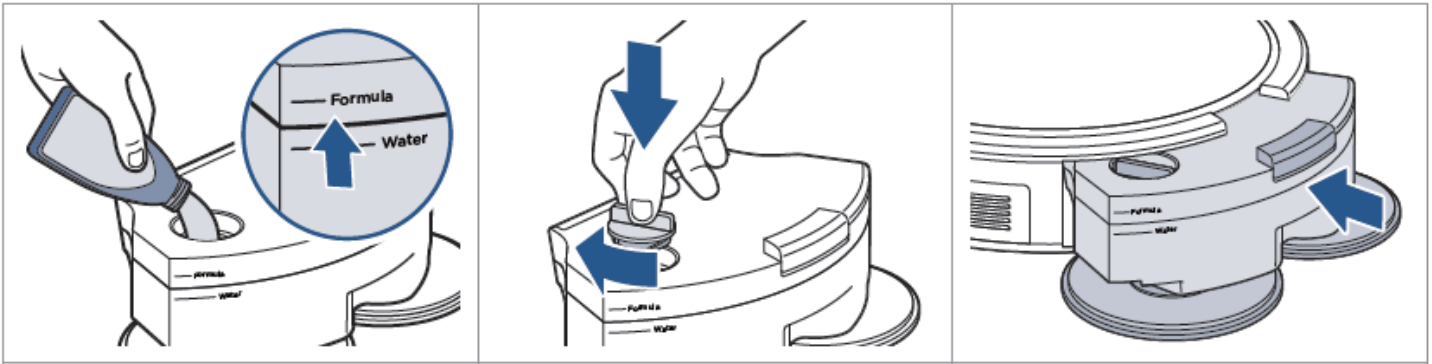


1. Turn the Power Switch OFF.
Press the button on top of the
Tank and pull to remove.

2. Twist to unlock the tank cap and
pull up to remove.

3. Fill the tank with water to the
"Water" fill line.

[Note to Reviewer: (parenthetical text) is optional; [bracketed text] is informational or an interchangeable option is presented, at least one of which must be used.]



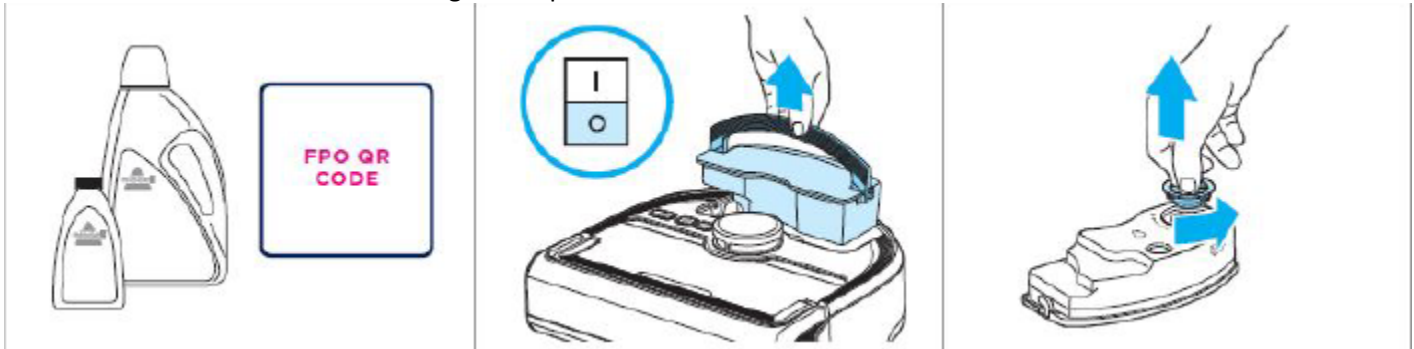
4. Fill with a BISSELL cleaning formula To the “Formula” fill line.

5. Twist the Mop Tank cap back into place.

6. Reinstall the tank.
Note: Hold the tank level to avoid leaking.

[ALTERNATE Filling Instructions]

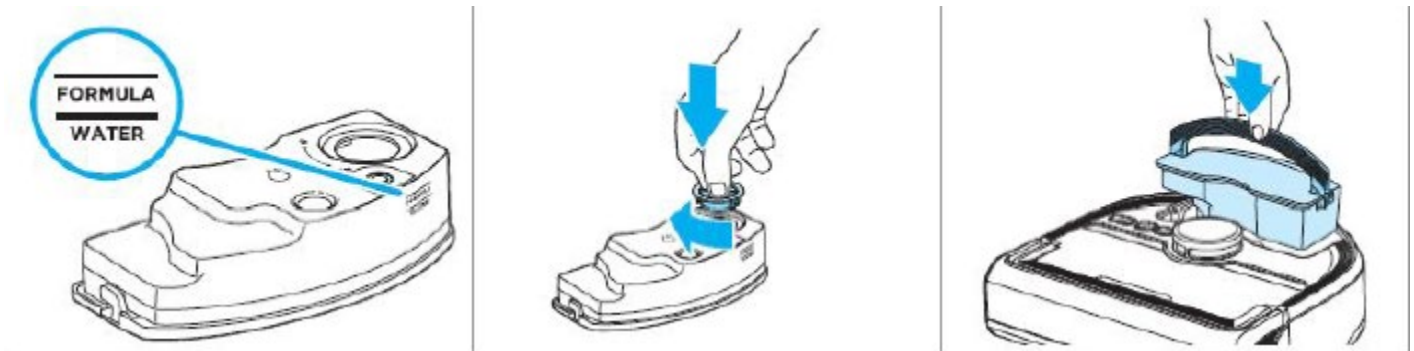
Keep plenty of [CrossWave][insert brand] formulas on hand so you can clean whenever it fits your schedule. Only use [CrossWave][insert brand] formulas in your machine. Other formulas or household cleaners may harm the machine. Do not use hard floor formula on area rugs or carpet.



1. Choose your formula*. Scan the QR code with your Smartphone camera or visit BISSELL.com for formulas.

2. Turn the power switch OFF. Remove clean water tank from the back of the machine by lifting the carry handle.

3. Unscrew the cap.



4. Add water to the WATER line. Then add BISSELL formula to the FORMULA line.

5. Twist the cap back into place.

6. Reinstall the tank and fold handle down so it is secure in place.

*Compatible BISSELL formulas include: Multi-Surface, Natural Pet, Hard Floor Sanitize^(B) [insert hard floor sanitize product name], Wood Floor, Multi-Surface Pet, Fresh Start

^BKills 99.9% of Enterobacter aerogenes (ATCC 13408)(,) (and) Staphylococcus aureus (ATCC 6538) (and) Salmonella enterica (ATCC 10708))

[Note to Reviewer: (parenthetical text) is optional; [bracketed text] is informational or an interchangeable option is presented, at least one of which must be used.]

⚠ WARNING To reduce the risk of fire due to internal component damage use only BISSELL cleaning products intended for use with this appliance.]

Scheduled Cleaning

Download the BISSELL Connect App to set up automatic features.

(You can designate a day and time for your robot to run automatically using the BISSELL Connect App. Once the robot is connected to the app and a map has been created of your home, go to the Schedule tab and follow the on-screen prompts.)

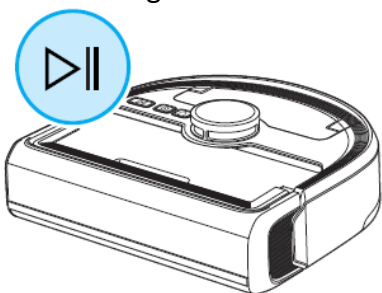
Before You Clean

- Pick up loose toys, cords, clothing, or other objects that may interfere with your robot.
- Secure or move fragile items as your robot may push lighter objects across the floor.)

Cleaning Your Floors

[Note to Reviewer: Graphics may be included and vary slightly.]

Full Cleaning Session



1. Turn the robot ON.
2. Start robot automatically with the app, or manually by pressing the play/pause button.
3. When the robot is finished, it will return to the dock. If you want it to return to the dock before cleaning is complete, press the home button.

Sanitizing with Spot [Mode][Clean] [Note to Reviewer: Graphics may vary slightly.]

[Spot mode can be used with [insert product name] to sanitize floors after cleaning up tough messes like a pet accident. Spot mode also works to give certain areas extra cleaning attention when used with [insert hard floor formula name] [Hard Floor formulas].]

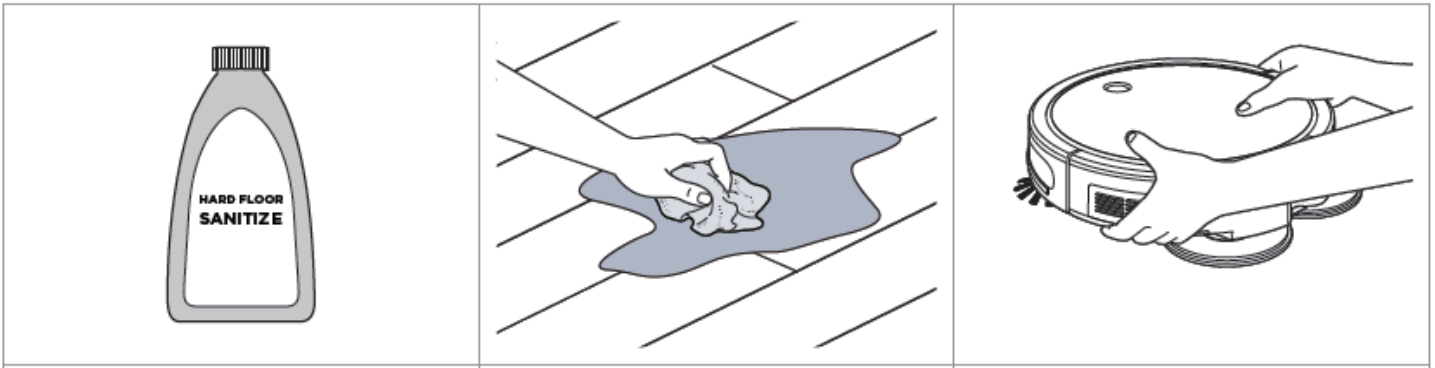
[In Spot Mode, use BISSELL® [insert product name] to sanitize floors after cleaning up tough messes like pet accidents, or give areas extra cleaning attention with BISSELL® [insert multi-surface cleaner name] (or) [insert pet mess cleaning formula name].]

(Note: You can sanitize three to four different areas around your home with a single tank.)
(Access Spot mode in the BISSELL Connect App.)

(Note: You can sanitize multiple areas around your home with a single tank.)

[Note to Reviewer: Steps 1 and 2 may be in either order. A table with the dilution information can be used in place of the image for the product that appears in Step 1 below.]

[Note to Reviewer: (parenthetical text) is optional; [bracketed text] is informational or an interchangeable option is presented, at least one of which must be used.]



1. [Add [insert product name] Formula and water

2. Wipe up the mess with (disposable) (paper) towel.

3. [Place the robot in the center of the area you want to clean (and select "Spot" mode in the BISSELL Connect App.)]

[To start Spot Mode, press the mode button until the spot icon is illuminated. Press the PLAY button to begin.]

[Note to Reviewer: one of the options below will be used.]

[following the steps on page [insert page #] for Mop mode tank prep]

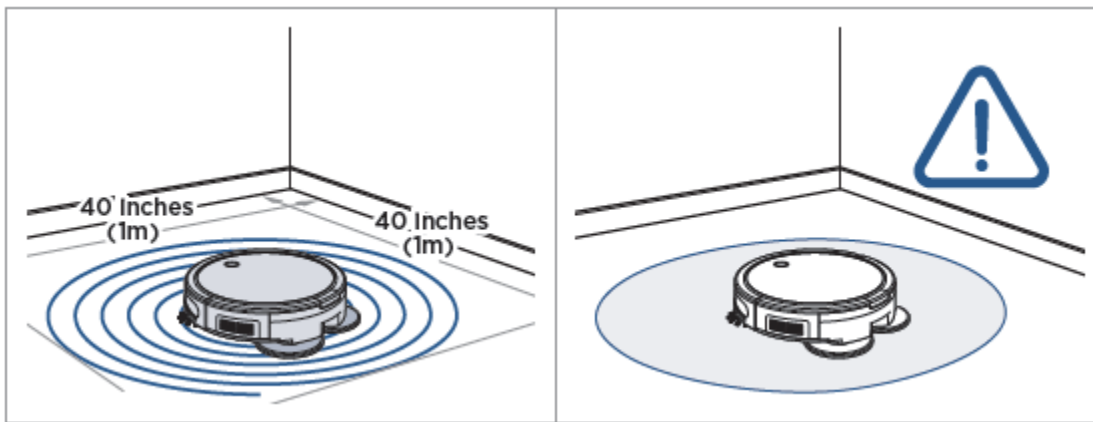
[using the water and product quantities as described in the table (below).]

[using [insert ounces of water from table below] fl. oz. water and [insert ounces of product from table below] fl. oz. formula.]

[Add [insert product name] and water. See chart for formula and water volumes.]]

[Note to Reviewer: If product is provided in a pre-measured pouch:]

Tear open [insert formula ounces as indicated in Product Dilution instructions table] (BISSELL) [insert product name] [sachet] [packet] [pouch] at indicated notch and pour entire contents into tank.



4. The robot will clean in a [spiral][square] pattern, covering an area approximately 40" x 40" (or 1m x 1m) for 5 minutes. [The robot][It] will beep to let you know [it's finished][when finished] (and

5. Use caution when [removing robot] [walking through the area] as the floor may be slippery. Allow to remain visibly wet for 5 minutes.

[Note to Reviewer: (parenthetical text) is optional; [bracketed text] is informational or an interchangeable option is presented, at least one of which must be used.]

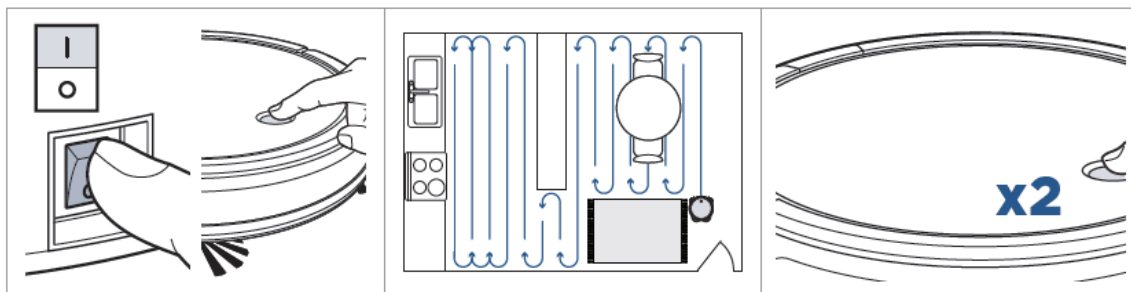
return to the dock.)

[Note to Reviewer: The below table does not need to appear in the printed manual but is a reference for inputting the appropriate product and water volumes in the use directions steps indicated below. Any equivalent dilution of 1 part product to 6 parts water may be inserted.]

(FORMULA TANK – DILUTION PREPARATION INSTRUCTIONS)

[MODEL NAME]	Amount of Product (fl. oz.)	Amount of (Warm) Tap Water
[Insert Model name(s)]	0.5	3 fl. oz.
	1	6 fl. oz.
	1.5	9 fl. oz.
	2	12 fl. oz.
	2.5	15 fl. oz.
	3	18 fl. oz.
	3.5	21 fl. oz.
	4	24 fl. oz.
	4.5	27 fl. oz.
	5	30 fl. oz.

Manual Cleaning



1. Turn the robot ON. Press The Start/Pause Button to start cleaning.

2. The robot will clean hard surfaces and avoid most soft Surfaces, such as area rugs and carpet.

3. Return the robot to the dock. Press the Start/Pause Button twice. The light ring will flash White as it finds its way back.

Note: The robot will stop if water is low. To resume cleaning, refill Mop Tank and push the Start/Pause Button.

Using the Self-Cleaning Cycle

1. Make sure there is at least 30 mL of clean water in the clean tank. Optional: Add [FreshStart™][insert cleaning product name] formula to the tank or tray.
2. Place the robot on the dock. Start the clean-out cycle in the app or manually:
In-App: Select the clean-out mode in the app.
Manually: Press mode button until the self-clean icon is illuminated. Press PLAY button.
3. The robot will run a cleaning cycle. The cleaning cycle cannot be manually paused or stopped.
4. Once complete, remove the brush roll by pulling up on the tab and place in brush roll holder to dry.

[Note to Reviewer: (parenthetical text) is optional; [bracketed text] is informational or an interchangeable option is presented, at least one of which must be used.]

After-Cleaning Care

[Note to Reviewer: Instructions and graphics depicting emptying the dirty water tank, brush roll removal and wiping down the robot will be displayed here.]

Maintaining the Mop Pads and Debris Trap

[Note to Reviewer: Instructions and graphics will be displayed here.]

Dry Vacuum Mode

(For more help, visit support.BISSELL.com.)

Maintaining the Dirt Bin

[Note to Reviewer: Instructions and graphics will be displayed here. This will not include any sanitizer use or reference to FIFRA regulated items.]

Cleaning the Brush Roll

(Check out the BISSELL Connect App for tips and videos on Brush Roll Maintenance.)

[Note to Reviewer: Instructions and graphics will be displayed here. This will not include any sanitizer use or reference to FIFRA regulated items.]

Removing and Cleaning the Caster Wheel

(For more help with maintaining your robot, open up the BISSELL Connect App.)

[Note to Reviewer: Instructions and graphics will be displayed here. This will not include any sanitizer use or reference to FIFRA regulated items.]

Replacing the Edge Cleaning Brushes

(Find replacement brushes on BISSELL.com.)

[Note to Reviewer: Instructions and graphics will be displayed here. This will not include any sanitizer use or reference to FIFRA regulated items.]

Storing Your Robot

Store your robotic vacuum cleaner safely indoors where it is unlikely to be damaged. Store with clean, dry mop pads. Any solution remaining in the Mop Tank should be emptied prior to storage.

Cleaning the Sensors

[Note to Reviewer: Instructions and graphics will be displayed here. This will not include any sanitizer use or reference to FIFRA regulated items.]

[Note to Reviewer: (parenthetical text) is optional; [bracketed text] is informational or an interchangeable option is presented, at least one of which must be used.]

Replacing the Battery

[Note to Reviewer: Instructions and graphics will be displayed here. This will not include any sanitizer use or reference to FIFRA regulated items.]

Troubleshooting

For a comprehensive walkthrough of your product and support tips visit support.BISSELL.com.

Error	Button Light State	Sound	Remedies
[Title Display]	[Listed light flashing description]	[# Beeps]	[Suggested fix]

Warranty

[Note to Reviewer: Warranty text displayed here may vary slightly.]

[This warranty gives you specific legal rights, and you may also have other rights which may vary from state to state. If you need additional instruction regarding this warranty or have questions regarding what it may cover, please contact BISSELL® Consumer Care by E-mail or telephone as described below.

It may be necessary to obtain some of your personal information, such as a mailing address, to fulfill terms of this warranty. Any personal data will be handled pursuant to BISSELL's Privacy Policy, which can be found online at www.BISSELL.com/privacy-policy.

Limited Two-Year Warranty

Subject to the ***Exceptions and Exclusions from the Terms of the Limited Warranty**, upon receipt of the product BISSELL will repair or replace (with new, refurbished, lightly used, or remanufactured components or products), at BISSELL's option, free of charge from the date of purchase by the original purchaser, for two years, any defective or malfunctioning part.

See information below on "If your BISSELL product should require service".

This warranty applies to product used for personal, and not commercial or rental, service. This warranty does not apply to fans or routine maintenance components

such as filters, belts or brushes. Damage or malfunction caused by negligence, abuse, neglect, unauthorized repair, or any other use not in accordance with the user guide is not covered. This warranty will only be valid if the product is used in the same country in which it was sold.

BISSELL is not liable for incidental or consequential damages of any nature associated with the use of this product. BISSELL's liability will not exceed the purchase price of the product.

Some states do not allow the exclusion or limitation of incidental or consequential damages, so the above limitation or exclusion may not apply to you.

*Exceptions and Exclusions from the Terms of the Limited Warranty

This warranty is exclusive and in lieu of any other warranties, either oral or written. Any implied warranties, which may arise by operation of law, including the implied warranties of merchantability and fitness for a particular purpose, are limited to the two-year duration from the date of purchase as described above.

Some states do not allow limitations on how long an implied warranty lasts, so the above limitation may not apply to you.]

(NOTE: Please keep your original sales receipt. It provides proof of date of purchase in the event of a warranty claim.)

[Note to Reviewer: (parenthetical text) is optional; [bracketed text] is informational or an interchangeable option is presented, at least one of which must be used.]

[Limited 1-year warranty, may vary by state. Visit support.BISSELL.com or call 1-800-383-2630 for complete warranty information.]



We're Waggin' Our Tails!

BISSELL® proudly supports BISSELL Pet Foundation® and its mission to help save homeless pets. When you buy a BISSELL product, you help save pets, too. We're proud to design products that help make pet messes, odors and pet homelessness disappear. Visit BISSELLsavespets.com to learn more.

(But wait, there's more!)

Join us online for a complete guide to your new product, including troubleshooting, product registration, parts, and more.

Go to support.BISSELL.com



Manufactured [by] [for]:
Bissell Homecare, Inc.
2345 Walker Ave, NW
Grand Rapids, MI 49544

Manufactured by
[BISSELL brand
Questions or comments 1.800.237.7691 ©(year) BISSELL Homecare Inc., Grand Rapids, MI 49544 USA
www.bissell.com]

(©(year) BISSELL Homecare Inc.
BISSELL International Trading Company BV
Stadhouderskade 55,
1072 AB Amsterdam
The Netherlands)

[Questions?] [Comments?] [Call XXX-XXX-XXXX]
(For Consumer Care contact:)
BISSELL Homecare, Inc.
P.O. Box 1888
Grand Rapids, MI 49501

[Note to Reviewer: (parenthetical text) is optional; [bracketed text] is informational or an interchangeable option is presented, at least one of which must be used.]



CROSSWAVE™

USER GUIDE

[INSERT SERIES #] SERIES

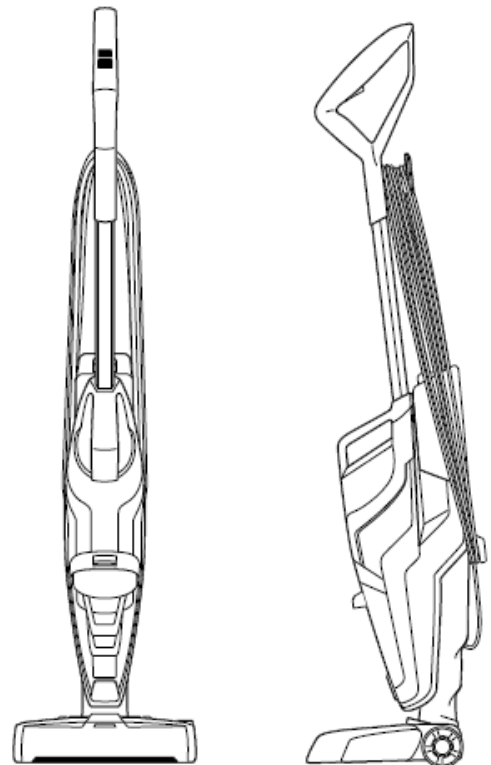
[INSERT MODE NAME]

[Note to Reviewer: Table of Contents May vary with model and may be presented on a different page.]

- What's in the Box(?).....[insert page #]
- User Interface.....[insert page #]
- Assembly & Charging the Battery.....[insert page #]
- Filling the Clean Water Tank.....[insert page #]
- Cleaning Your Floors.[insert page #]
- Using the Self-Cleaning Cycle.....[insert page #]
- After-Cleaning Care.....[insert page #]
- Storing Your Machine.....[insert page #]
- Troubleshooting.....[insert page #]
- Warranty.....[insert page #]

Product Overview

1. Clean-Out Cycle Button
2. Mode Button
3. Power Button
4. Clean Water Tank
5. Dirty Water Tank Release Button
6. Dirty Water Tank
7. Brush Roll Window



[Note to Reviewer: (parenthetical text) is optional; [bracketed text] is informational or an interchangeable option is presented, at least one of which must be used.]

(Meet your new BISSELL product!)

(Go online for a comprehensive walkthrough of your (new) purchase!

This guide has everything you need to get ready for your first use, including setting up, using and maintaining your machine, but online you'll find additional resources like tips and troubleshooting, videos, product registration, parts and more.

Go to [support.BISSELL.com](https://support.bissell.com).)

(Go to [support.BISSELL.com](https://support.bissell.com) for a comprehensive walkthrough of your new purchase, including videos, tips, support, and more. Want to get started right away? This guide has all the information you need to setup your new product. Let's take a look...)



[Note to Reviewer: (parenthetical text) is optional; [bracketed text] is informational or an interchangeable option is presented, at least one of which must be used.]

IMPORTANT SAFETY INSTRUCTIONS

READ ALL INSTRUCTIONS BEFORE USING YOUR CROSSWAVE™.

When using an electrical appliance, basic precautions should be observed, including the following:

WARNING

TO REDUCE THE RISK OF FIRE, ELECTRIC SHOCK, OR INJURY:

[Note to Reviewer: Electrical Safety Statements will be inserted here - INCLUDING:]

»Use only BISSELL cleaning products intended for use with this appliance to prevent internal component damage. See the Cleaning Fluid section of this guide.

SAVE THESE INSTRUCTIONS FOR FUTURE USE

This model is for household use only. Commercial use of this unit voids the manufacturer's warranty.

(IMPORTANT INFORMATION)

- Keep appliance on a level surface.
- If your appliance has a motorized brush roll, do not leave machine running in the same spot without the handle fully upright.
- To reduce the risk of a leaking condition, do not store where freezing may occur. Damage to internal components may result.)

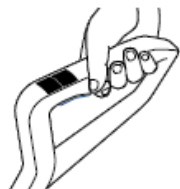
(Thanks for buying a BISSELL CrossWave™)

We love to clean and we're excited to share one of our innovative products with you. We want to make sure your multi-surface cleaner works as well in two years as it does today, so this guide has tips on using (pages #-#), maintaining (pages #-#), and if there is a problem, troubleshooting (page #).

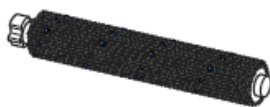
Your multi-surface cleaner needs a little assembly before you can put it to work, so flip to page # and let's get started!)

What's In The Box?

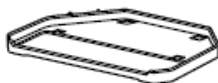
[Note to Reviewer: examples of Graphics and Naming of Items may vary slightly.]



Handle



Dual Action
Multi-Surface
Brush Roll



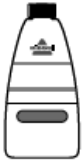
Storage Tray



Brush Roll
Drying Tray

[Note to Reviewer: (parenthetical text) is optional; [bracketed text] is informational or an interchangeable option is presented, at least one of which must be used.]

					
Handle & Body	Brush Roll(s)	Trial Formula(s)	Clean-Out Brush & Strainer	Docking Station	Charging Adapter



[Insert name of Cleaner] [Insert Name of Hard Surface Sanitizer EPA Reg. No. 6297-2]

NOTE: Standard accessories may vary by model. To identify what should be included with your purchase, please refer to the “Carton Contents” list located on the carton top flap.

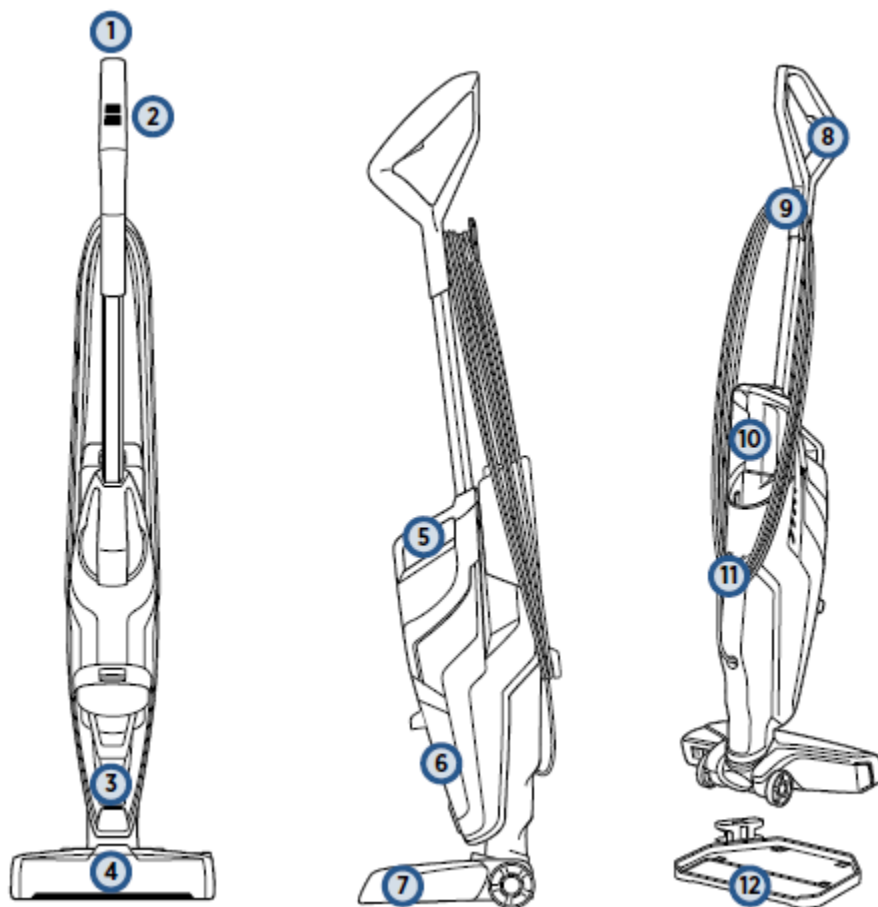
[Note to Reviewer: (parenthetical text) is optional; [bracketed text] is informational or an interchangeable option is presented, at least one of which must be used.]

Safety Instructions.....[Page #]
Product View.....[Page #]
Assembly.....[Page #]
Cleaner and Sanitizer Formulas....[Page #]
Operations.....[Page #]

Maintenance & Care.....[Page #]
Troubleshooting.....[Page #]
Warranty.....[Page #]
Service.....[Page #]
Product Registration.....[Page #]

Getting to Know Your CrossWave™

[Note to Reviewer: The below or similar graphics will be used. Names of parts and placement of numbers could vary.]



- 1 [insert part name]
- 2 [insert part name]
- 3 [insert part name]
- 4 [insert part name]
- 5 [insert part name]
- 6 [insert part name]

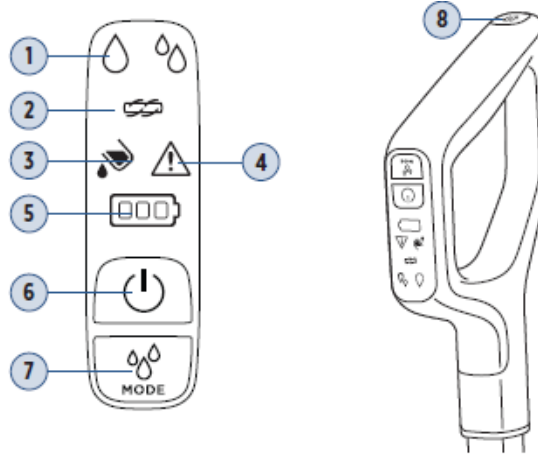
- 7 [insert part name]
- 8 [insert part name]
- 9 [insert part name]
- 10 [insert part name]
- 11 [insert part name]
- 12 [insert part name]

[Note to Reviewer: (parenthetical text) is optional; [bracketed text] is informational or an interchangeable option is presented, at least one of which must be used.]

User Interface

[Note to Reviewer: Below is an example of text and graphics. This may vary depending on model.]

1. Water Spray Rate Indicator
2. Brush Roll Obstruction Indicator
3. Dirty Water Tank Full/Missing Indicator
4. Error Indicator
5. Battery Level Indicator
6. Power Activation Switch (machine must be reclined)
7. Water Spray Rate Selection Button
8. Self-Cleaning Cycle Activation Switch



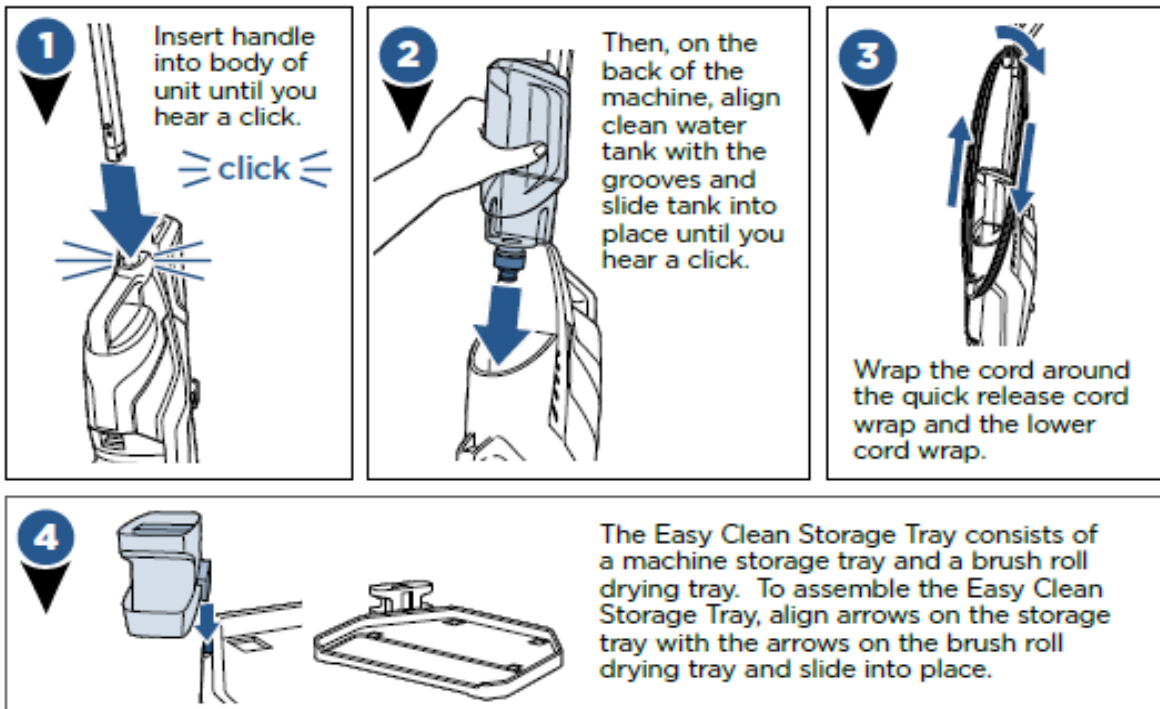
Assembly (& Charging the Battery)

(Go to support.BISSELL.com for assembly videos.)

[Note to Reviewer: Information for assembly the parts or inserting a battery will be included here.]


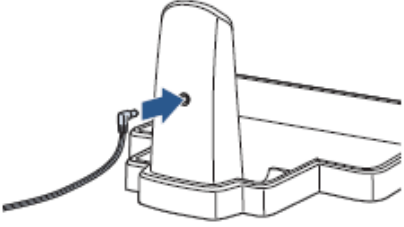

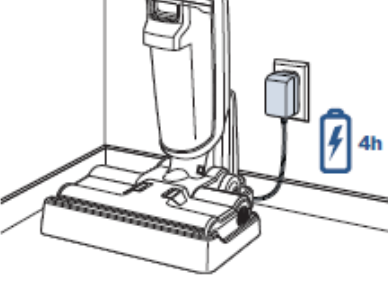
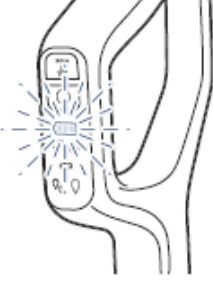
WARNING

Do not plug in your CrossWave™ until you are familiar with all instructions and operating procedures.



NOTE: To easily unwrap the cord for use, just turn the quick release cord wrap downward to remove the cord from the cord wrap.

[Note to Reviewer: (parenthetical text) is optional; [bracketed text] is informational or an interchangeable option is presented, at least one of which must be used.]

		
<p>1. Firmly insert the handle into body of machine until it clicks into place.</p>	<p>2. Plug charging adapter into docking station.</p>	<p>3. Plug the adapter into wall outlet.</p>
	 <p>Low Battery: One battery segment will flash blue.</p> <p>Charging Mode: Blue light will flash according to battery status.</p> <p>Charging Complete: All three segments will be solid blue.</p>	
<p>4. Place on the docking station to charge.</p>	<p>5. Fully charge machine before first use. Battery icon lights will indicate charge.</p>	

⚠ WARNING

To reduce the risk of fire and electric shock due to internal component damage, use only BISSELL cleaning fluids intended for use with the hard floor device.

Cleaner and Sanitizer Formulas

[Note to Reviewer: This section may be omitted and/or a QR code may be added to link to the formula information.]

Keep plenty of CrossWave™ formulas on hand so you can clean your hard floors and area rugs whenever it fits your schedule.

Always use CrossWave™ formulas in your machine. Other solutions may harm the machine and void the warranty.

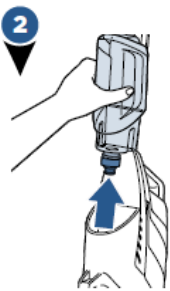
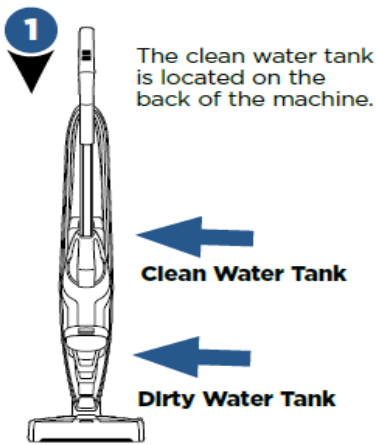
[Note to Reviewer: (parenthetical text) is optional; [bracketed text] is informational or an interchangeable option is presented, at least one of which must be used.]

CROSSWAVE™ FORMULAS			
[Insert Graphic Image of Bottle]	[Insert Graphic Image of Bottle]	[Insert Graphic Image of Bottle]	[Insert Graphic Image of Bottle]
Multi-Surface Cleaner Formula	Wood Floor Cleaner Formula	Area Rug Cleaner Formula	Hard Surface Sanitizer
Great for cleaning ALL sealed floors and area rugs	Restore your wood floors' natural shine	Cleans by removing stuck on and embedded dirt from area rugs	Clean and Sanitize your floor in one easy step

Filling [Your][The] Clean Water Tank

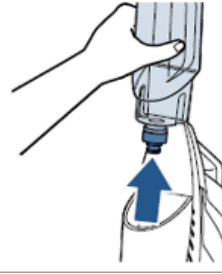
[Note to Reviewer: The below or similar graphics and text depicting the steps may be used. Numbering can be altered if steps are combined into one image/instruction]

(Keep plenty of CrossWave® formulas on hand so you can clean whenever it fits your schedule. Only use CrossWave formulas in your machine. Other formulas or household cleaners may harm the machine. Do not use hard floor formula on area rugs or carpet.)



Lift the clean water tank straight up to remove from the machine.

[Note to Reviewer: (parenthetical text) is optional; [bracketed text] is informational or an interchangeable option is presented, at least one of which must be used.]



or combined step 1 and 2:

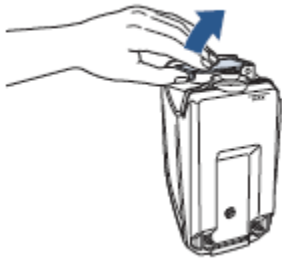
The clean water tank is Located on the back of the Machine. To remove, grasp the tank and pull up.

Pull the clean water tank up to remove.



[Unscrew the cap from the clean water tank.][Unscrew the cap from the bottom of the tank.] [Open the top of the clean water tank by removing the screw cap.]

(The clean water tank has two measuring volumes depending on the amount of space you would like to clean. (See table for details for your CrossWave model.))



Lift the flap and hold open.

[Optional:]



(Choose your formula*. Scan the QR code with your Smartphone camera or visit BISSELL.com for formulas.



[-or-] Choose the right BISSELL® formula from the [CrossWave Formula table][Choosing your formula section][Cleaner and Sanitizer table] on page [insert page number].

[Note to Reviewer: (parenthetical text) is optional; [bracketed text] is informational or an interchangeable option is presented, at least one of which must be used.]

*Compatible BISSELL formulas include: Multi-Surface, Wood Floor, Area Rug, PET Multi-Surface with Febreze Freshness, Hard Floor Sanitize [insert product name], PET Clean + Natural Multi-Surface.
 Certain trademarks used under license from The Procter & Gamble Company or its affiliates.)

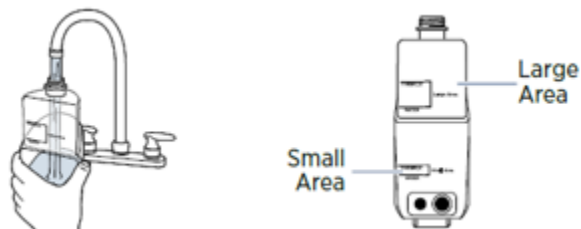
[Note to Reviewer: The below table does not need to appear in the printed manual but is a reference for inputting the appropriate product and water volumes in the use directions steps indicated below.]

(FORMULA TANK – DILUTION PREPARATION INSTRUCTIONS)

[MODEL NAME]	(FILL LINE)	Amount of Product (fl. oz.)	Amount of (Warm) Tap Water
[Insert CrossWave Model name(s)]	(Large Area (700 sq ft) (Small Area (<350 sq ft)) (NA))	0.5	3 fl. oz.
		1	6 fl. oz.
		1.5	9 fl. oz.
		2	12 fl. oz.
		2.5	15 fl. oz.
		3	18 fl. oz.
		3.5	21 fl. oz.
		4	24 fl. oz.
		4.5	27 fl. oz.
		5	30 fl. oz.

[Step 4 for machines with a small and large fill line]

[**Option 1:** This option may ONLY appear if the accompanying pesticide container uses **Option A** from the Directions for Use Section I. for the container label.]



The clean water tank has a Large Area volume and a Small Area volume. Pick the one that best suits the space that you would like to clean.

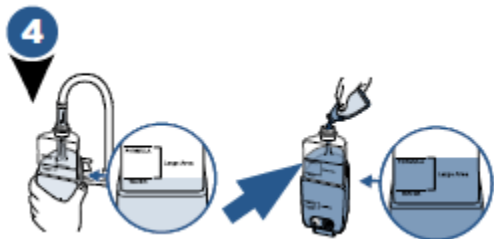
The Large Area fill lines are for areas up to 700 sq. ft.

The Small Area fill lines are for areas under 350 sq. ft.

Use warm tap water and the appropriate BISSELL formula.

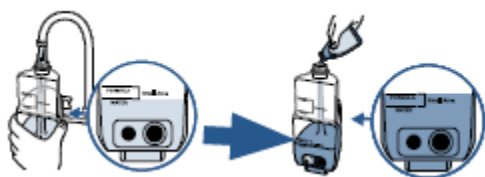
[Note to Reviewer: (parenthetical text) is optional; [bracketed text] is informational or an interchangeable option is presented, at least one of which must be used.]

[Option 2: this option must appear if the accompanying pesticide container uses Option B from the Directions for Use Section I. for the container label. It may optionally be used for all units/models.]



For **large area cleaning** (up to 700 sq ft)

- Fill formula tank with (warm) tap water to the second water fill line [insert water volume from table above].
- Then add formula to the second formula fill line [insert formula volume from table above].



For **small area cleaning** (<350 sq ft)

- Fill formula tank with (warm) tap water to the first water fill line [insert water volume from table above].
- Then add formula to the first formula fill line [insert formula volume from table above].

[Step 4 for machines with only one fill line. Graphics are optional:]

- [Fill machine formula tank with (warm) (tap) water to Water fill line (insert water ounces as indicated in Product Dilution Instructions table).]
[Add (warm) (tap) water as indicated by the fill line on the (clean) (water) tank [(insert water ounces as indicated in Product Dilution Instructions table)] [(as indicated in the Production Dilution Table) (below).]
- [Then add formula to Formula fill line (insert formula ounces as indicated in Product Dilution Instructions table).]
[Add BISSELL formula as indicated by the fill lines on the (clean) (water) tank (insert water ounces as indicated in Product Dilution Instructions table) (as indicated in the Production Dilution Table) (below) (and close flap.)]

[Step 4 if a pre-measured packet inserted into the machine. Graphics are optional:]

[For Use with pre-measured sachets/packets in machine with an integrated dispenser in formula-only tank]

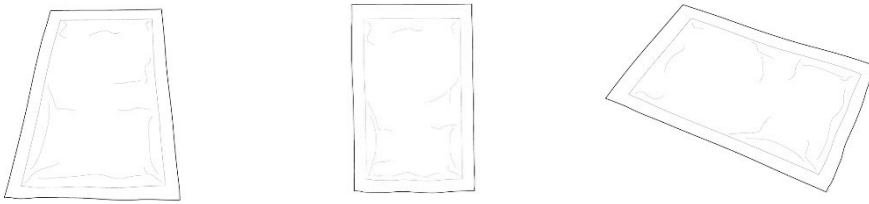
- Fill the Clean Water Tank with (warm) water to the Fill line indicated on the tank – [insert water volume from table above]. (Use warm water.)
- Lift Formula lid and place a [insert formula ounces as indicated in Product Dilution instructions table] (BISSELL) [insert product name] [sachet] [packet] [pouch] in holder.

[For Use with pre-measured sachets/packets in machine withOUT an integrated dispenser in formula-only tank]

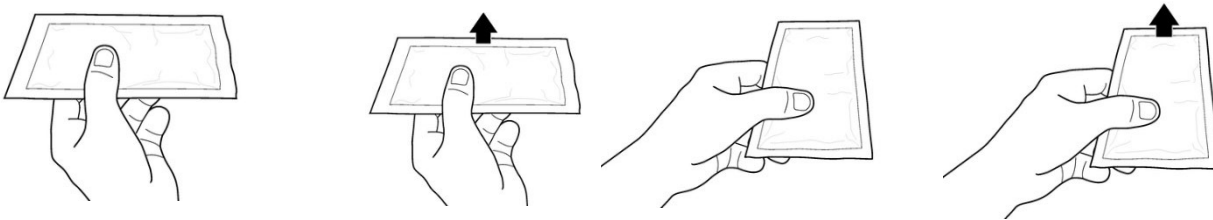
- Fill the Clean Water Tank with (warm) water to the Fill line indicated on the tank – [insert water volume from table above]. (Use warm water.)
- Tear open [insert formula ounces as indicated in Product Dilution instructions table] (BISSELL) [insert product name] [sachet] [packet] [pouch] at indicated notch and pour entire contents into tank.

[Note to Reviewer: (parenthetical text) is optional; [bracketed text] is informational or an interchangeable option is presented, at least one of which must be used.]

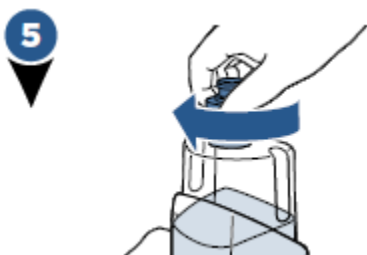
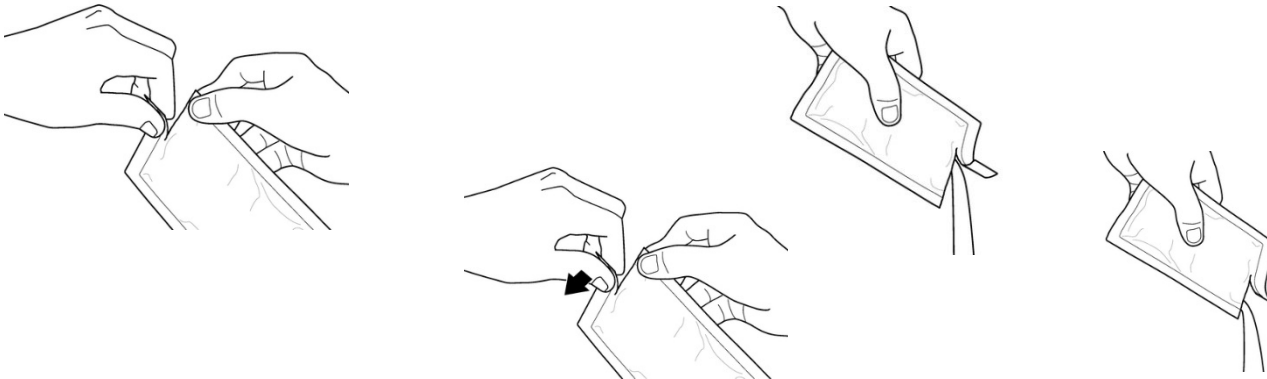
[Packet image]



[Insert pre-measured packet into machine:]

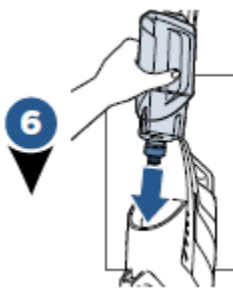


[Tear open pre-measured packet, pour]



Screw the cap tightly back onto the clean water tank until completely closed.

[Note to Reviewer: (parenthetical text) is optional; [bracketed text] is informational or an interchangeable option is presented, at least one of which must be used.]



[On the back of the machine, align clean water tank with the grooves and slide tank into place until you hear a click.]
[Insert tank by lining up bottom edge and pressing until it clicks into place.]

(A few notes about filling the clean water tank:

- Fill with warm tap water and add the appropriate BISSELL solution. **DO NOT USE BOILING WATER. DO NOT HEAT WATER OR TANK IN MICROWAVE.)**

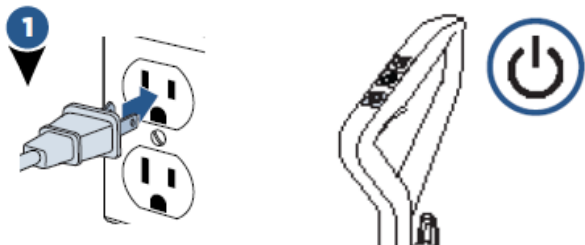
Cleaning Your (Hard) Floors

(Go to support.BISSELL.com for how-to videos and cleaning tips.)

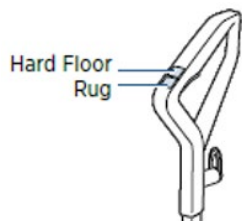
(We have cleaning tips for stuck-on messes and more at support.BISSELL.com.)

For use on sealed and non-porous flooring (including hardwoods, floors, wood floors, ceramic tile, terrazzo and vinyl).

[Note to Reviewer: The below or similar graphics and text depicting the steps may be used with the steps below. Step numbering may change if steps combined or omitted depending on the model variations.]

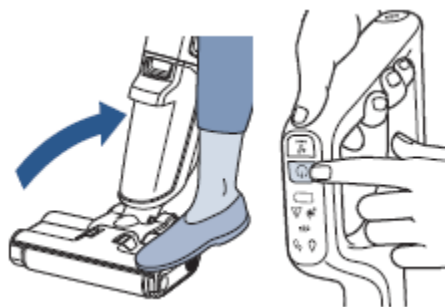


- 1) (Plug machine into a properly grounded outlet.) [Use the power button to turn the machine ON and OFF. Press the mode button to switch between area rug and hard floor modes.]



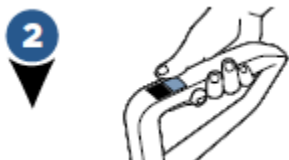
[To turn the machine ON, press the hard floor or rug button.]

[Note to Reviewer: (parenthetical text) is optional; [bracketed text] is informational or an interchangeable option is presented, at least one of which must be used.]



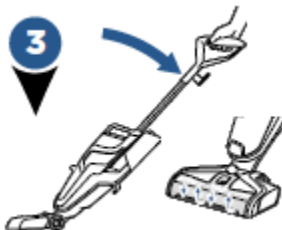
[Recline the machine. Press the power button ON.]

(Note: The unit must be reclined before power button will activate.)



2) (Select cleaning mode)

To start cleaning your hard floors, turn the machine ON pressing the HARD FLOOR button. Once the setting is selected, the dry vacuum will turn on. To turn OFF, press the HARD FLOOR setting a second time.

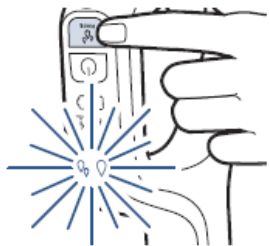


3) [Recline (the (body of) the machine) (backward) to start the brush roll spinning.] [To stop the brush roll spinning, you will need to stand the machine upright.][When the machine is standing upright, brush roll will not spin.][Brush roll will not spin when machine is upright.]



[Press the steam button to activate SteamWash® mode. Let steam heater warm up for 30 seconds before use. When warming, the light on the foot control panel will blink. The light will turn solid orange when steam is ready.]

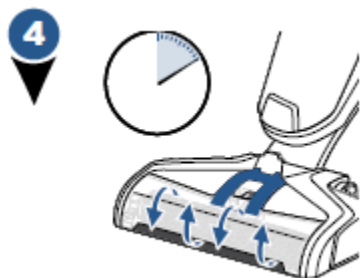
[Note to Reviewer: (parenthetical text) is optional; [bracketed text] is informational or an interchangeable option is presented, at least one of which must be used.]



[Press the WATER FLOW button to switch between LO and HI Modes.]

LO Mode: Blue light solid

HI Mode: Blue light solid



- 4) Before each use, hold the solution spray trigger for 10 seconds to [prime the system with cleaning Solution][wet the brush roll]. (LED lights illuminate when holding the trigger.) (NOTE:) (When solution is flowing, you will see bubbles forming at the edges of the brush roll window.) (LED lights are always illuminated, but turn blue when holding the trigger.) (LED lights will illuminate when holding the solution spray trigger.) (Bubbles will appear in the brush roll window when the solution is flowing.)



- 5) [Solution will dispense automatically. Make forward and backward passes to clean your floors.]

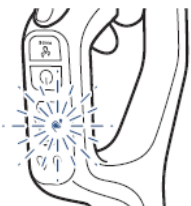
[Note to Reviewer: "To Sanitize" instructions may be included here or in a separate section header for Cleaning with Hard Floor Sanitize Formula.]

[To clean: Hold the spray trigger to apply solution to floor on both forward and backward passes.

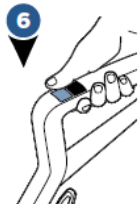
To Sanitize: Remove visible soil. Using the Hard Surface Sanitizer [or insert brand name], hold spray trigger to apply solution to floor on both forward and backward passes. Allow to remain visibly wet for 5 minutes.

[Note to Reviewer: (parenthetical text) is optional; [bracketed text] is informational or an interchangeable option is presented, at least one of which must be used.]

NOTE: Hard Surface Sanitizer formula is for use on hard, sealed floors only. Do not use on carpet or area rugs. Read sanitizer container label fully prior to use.]



- 6) The dirty water tank indicator will flash red when tank is full or removed.



- 7) To dry hard floors faster, release the trigger and clean a second pass without dispensing solution. Stay off cleaned area until completely dry.



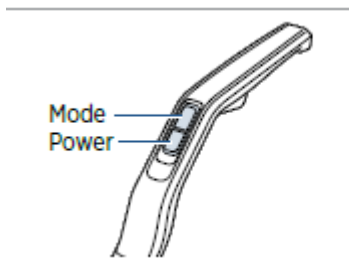
- 8) Turn the machine OFF by pressing the power button and return machine to the upright position.

TIP: When cleaning excessively dirty or muddy hard floors or if your brush roll looks dirty, use the Easy Clean Storage Tray to rinse your brush roll before cleaning your area rugs.

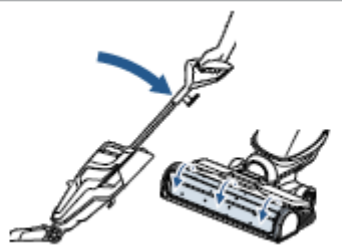
TIP: For cleaning up overly challenging and stuck-on messes on your hard floors, activate the **RUG** mode and hold your CrossWave™ over the mess. Using short passes while holding the trigger allows the multi-surface brush to go to work.

[Note to Reviewer: (parenthetical text) is optional; [bracketed text] is informational or an interchangeable option is presented, at least one of which must be used.]

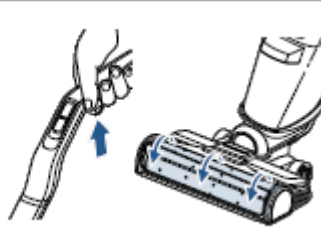
[ALTERNATE CLEANING YOUR FLOORS SECTION]



1. Press the power button ON. Press the mode button to switch between modes.

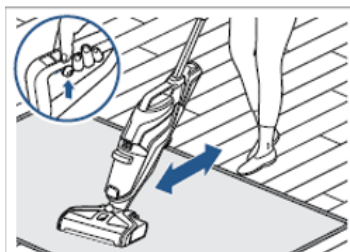


2. Recline the machine to start the brush roll spinning. When the machine is standing upright, brush roll will not spin.



3. Before each use, hold the solution spray trigger for 10 seconds to prime the system with cleaning solution.

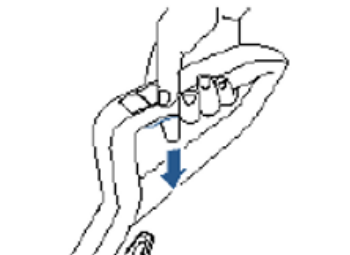
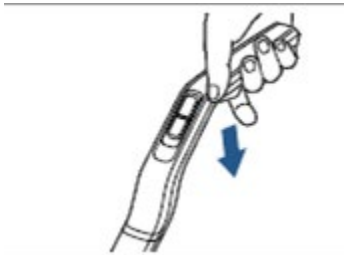
Note: LED lights are always illuminated, but turn blue when holding the trigger. Bubbles will appear in the brush roll window when the solution is flowing.



4. [To clean, hold the solution spray trigger to apply solution on forward pass. For heavier soils, press the steam button if available.]

[While cleaning, hold down the trigger to dispense solution and steam while making forward and backward passes. Repeat as needed to remove stuck-on messes.]

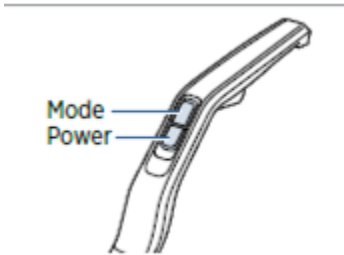
[Hold the solution spray trigger to apply solution on forward and backward passes.]



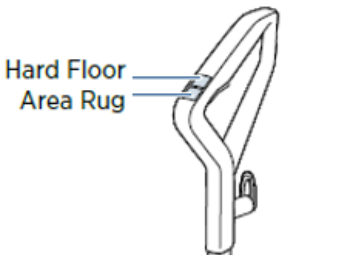
5. [Release the trigger and make a backward pass without dispensing solution.]

[To dry floor, release trigger to stop dispensing solution and steam. Make forward and backward passes to suction up excess water.]

[Release the trigger and make a backward pass without dispensing solution. To dry floors faster, make additional dry passes.]



6. [Turn OFF the machine by pressing the power button.]






[Press the rug or hard floor button to turn the machine OFF.]

(Hard Floor: Best for everyday messes on sealed hard floors, like tracked-in mud, spilled cereal and milk, coffee, and more! **Area Rug:** Best for refreshing and cleaning dry messes, like crumbs, dirt, hair, and more from area rugs.)

[Note to Reviewer: (parenthetical text) is optional; [bracketed text] is informational or an interchangeable option is presented, at least one of which must be used.]

Cleaning Modes

Hard Floor Mode	Area Rug Mode	SteamWash™ Mode
		
Clean everyday messes on sealed hard floors such as tracked-in mud, spilled cereal and milk, coffee, and more!	Refresh area rugs and clean dry messes such as crumbs, dirt, hair, and more.	Power through tough, stuck-on messes on hard floors with the power of Hydrostream™ Technology.

[Sanitizing Hard Floors][Sanitizing with Hard Floor Sanitizing Formula][Cleaning with Hard Floor Sanitize Formula]

[Please read the Hard Floor Sanitize formula label prior to each use.][Please read “Directions For Use” on Hard Floor Sanitize [insert product brand name] label.] Use on hard nonporous floors only.



1. [Follow cleaning instructions above to remove visible soils.
[Follow steps on page [insert number] to remove surface dirt and debris.]
[Remove visible soil before cleaning.]

(To Sanitize:) [Hold trigger down to apply solution to floor.] [In HI mode, make forward and backward passes.]
[Note to Reviewer – models with a HI mode will automatically dispense as the machine is pushed]



2. [Allow formula to remain visibly wet on the floor for five minutes.]
[Allow floor to remain visibly wet with formula for five minutes.] (This may require additional passes (in HI mode).)

[Note to Reviewer: (parenthetical text) is optional; [bracketed text] is informational or an interchangeable option is presented, at least one of which must be used.]



3. [With the (spray) trigger released] [In HI mode,], make forward and backward passes to extract solution.

[Option for models that have rug uses]

ATTENTION

Do not overwet carpet or hardwood floors.

Be careful not to run over loose objects or edges of area rugs. Stalling the brush may result in premature belt failure.

[Option for models with no rug uses]

ATTENTION

This machine is designed to be used on sealed hard floors.

Do not overwet hardwood floors. Be careful not to run over loose objects or edges of area rugs. Stalling the brush may result in premature belt failure.

Cleaning Area Rugs

[Note to Reviewer: Cleaning Area Rug Instructions and Graphics will be inserted on this page, if the model includes uses on rugs]

Sanitizer product is not for use on rugs.

Plug machine into a properly grounded outlet.

Select cleaning mode:

To start cleaning your rugs, turn the machine ON pressing the **RUG** button. Once the setting is selected, the dry vacuum will turn on. To turn OFF, press the **RUG** setting a second time.

Recline the body of the machine backward to start the brush roll spinning. To stop the brush roll spinning, you will need to stand the machine upright.

Before each use, hold the solution spray trigger for 10 seconds to prime the system with cleaning solution.

LED lights illuminate when holding the trigger.

NOTE: When solution is flowing, you will see bubbles forming at the edges of the brush roll window.

To clean, hold the solution spray trigger to apply solution on both forward and backward passes.

To dry area rugs faster, release the trigger and clean a second pass without dispensing solution.

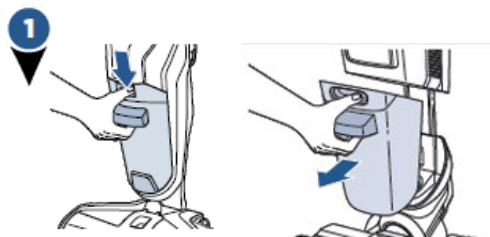
NOTE: The RUG button dispenses twice the solution of the HARD FLOOR button to help with area rug cleaning.

TIP: For the most thorough clean, make 4 wet passes and 4 dry passes using overlapping strokes over each area you clean on your rugs.

[Note to Reviewer: (parenthetical text) is optional; [bracketed text] is informational or an interchangeable option is presented, at least one of which must be used.]

Maintenance: Empty Dirty Water Tank

[Note to Reviewer: The below or similar graphics and text depicting the steps may be used with the steps below. Numbering may change if steps are combined or omitted depending on model variation.]



[To release dirty water tank, press down on recessed button on the top of the dirty tank.]

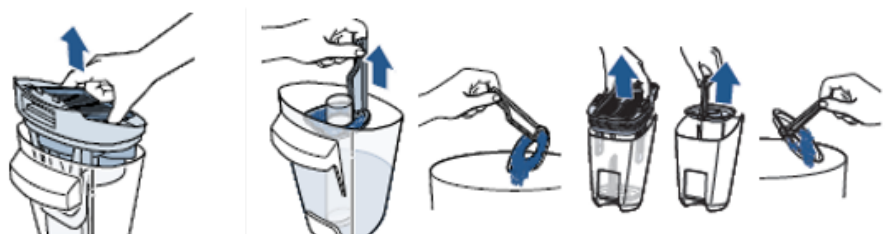
[Press the button on the top of (dirty water) tank, grab the front handle and pull (the tank) out.]



[Grab the front handle while pressing down on button and pull dirty water tank away from the unit.]



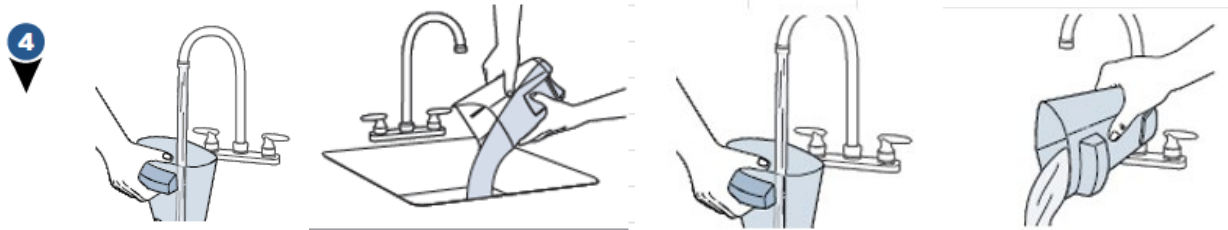
Grasp top of dirty water tank in recessed areas on each side of the filter and pull upward to remove the top of the tank.



[Hold top of tank near the sides of the filter and pull up to remove. Pull strainer stem and remove from the tank. Throw debris into the trash.]

[Hold the top of the tank near the sides of the filter and pull up to remove. Remove strainer from tank and throw debris in trash.]

[Note to Reviewer: (parenthetical text) is optional; [bracketed text] is informational or an interchangeable option is presented, at least one of which must be used.]



[Pour dirty water and debris out. Rinse the inside of the dirty water tank.]

[Pour dirty water down the sink and rinse the tank.]

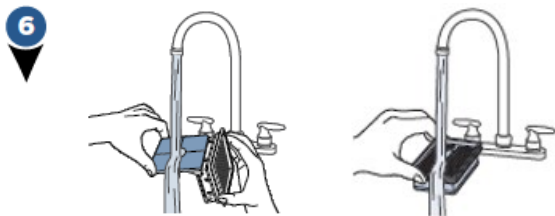
[Pour dirty water into a utility sink or similar waste-water receptacle. Thoroughly rinse the tank.]



[Remove the filter from the top of the dirty water tank by pulling it up.]

[Remove filter from lid. Open screen and remove debris.]

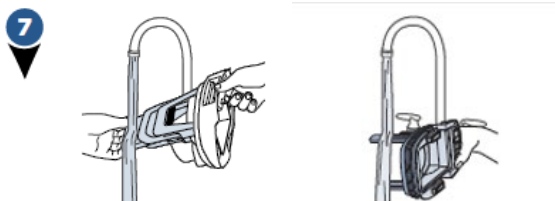
[Hold the top of the tank near the sides of the filter and pull up to remove.]



[Hand wash the vacuum filter and screen with warm water and mild detergent.]

[Wash filter in warm water and mild detergent. Clean and dry filter after each use. Replace every 3 months.]

[Wash filter and screen with warm water and mild detergent.]



[Rinse the float located at the bottom of the top of the dirty water tank.]

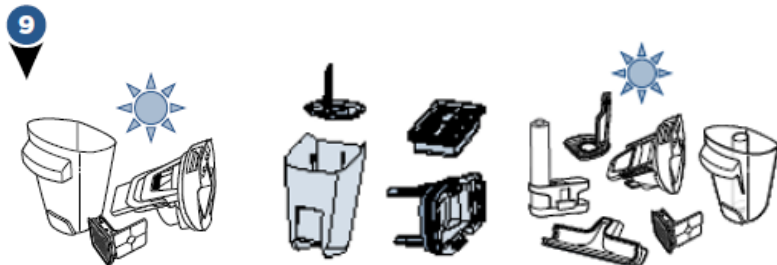
[Rinse the bottom of the tank cover to remove wet debris.]

[Rinse the float at the bottom of the top of the dirty water tank cover.]

[Note to Reviewer: (parenthetical text) is optional; [bracketed text] is informational or an interchangeable option is presented, at least one of which must be used.]



(If the inside area where the dirty water tank sits is dirty, wipe it clean with a rag or towel.)

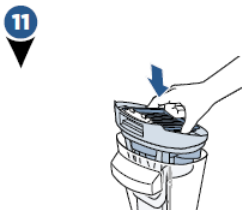


[Leave (all) parts out to dry before reassembling.]

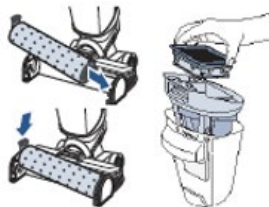
[Let parts air dry completely.]



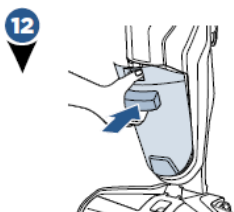
Place vacuum filter back into the top of the dirty water tank.



[Once parts are dry, reassemble and replace the top of dirty water tank.]



[Reinstall brush roll following steps on page [insert page number]. Reinstall filter, strainer and tank lid.]

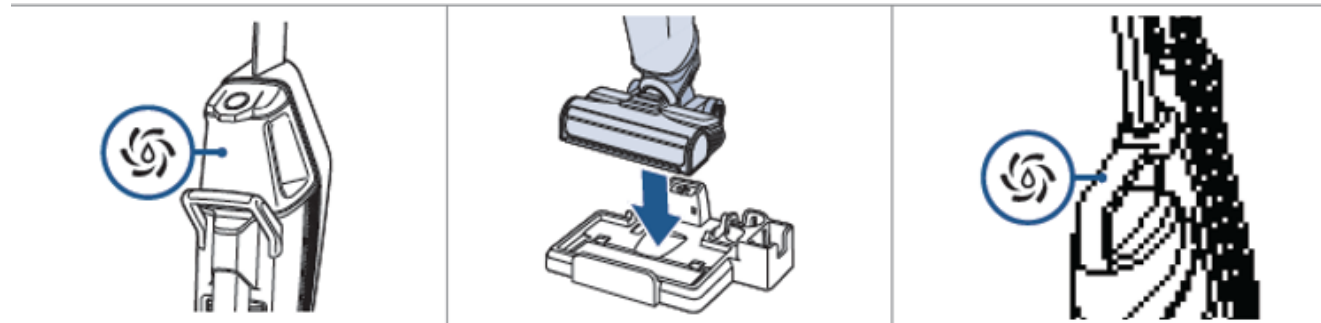


[Note to Reviewer: (parenthetical text) is optional; [bracketed text] is informational or an interchangeable option is presented, at least one of which must be used.]

[Angle the dirt tank back into body of machine inserting bottom first. Then tilt the top of the dirt tank toward the machine and push into place until you hear a click.][Insert bottom of tank first. Pivot top toward the machine until it clicks.]

(Using the Clean Out Cycle)

Note: Empty dirty water tank before beginning and be sure the strainer and filter stay dry. Do not run the cycle more than two times after each cleaning session.



1. Before starting the cycle, fill clean water tank with water and solution up to the Clean out fill line.

2. Plug machine into a properly grounded outlet and place on the Tray. The Clean Out Cycle button on the handle will light up blue when ready.

3. Press the Clean Out Cycle button to begin. Note: For best results, only run the cycle once.)

(Using the Self-Cleaning Cycle)



1. Place the machine on the docking station. Make sure there is cleaning formula in the clean water tank and the dirty water tank is empty.

2. Press the self-cleaning button to start the cycle. The button light will pulse while cycle is running.

3. Once complete, remove the brush roll to dry. See “After-Cleaning Care” for instructions.)

[Note to Reviewer: (parenthetical text) is optional; [bracketed text] is informational or an interchangeable option is presented, at least one of which must be used.]

After-Cleaning Care

Go to support.BISSELL.com for a full list of how-to videos.

[Note to Reviewer: Instructions and graphics will be displayed here. The information may only include steps for cleaning the various pieces of the machine by removing the parts for washing/rinsing with water.]

Did You Know?

The Float is what prevents your dirty tank from overflowing. When your dirty tank is full, the float will shut off your suction motor creating a high pitched sound indicating it is time to empty your dirty water tank.

NOTE: Make sure to clean your dirty tank and let all components dry out after each use to keep your product at its best.

WARNING

To reduce the risk of fire, electric shock or injury, turn power OFF and disconnect plug from electrical outlet before performing maintenance or troubleshooting.

Maintenance: Cleaning the Brush Roll and Brush Chamber

[Note to Reviewer: Instructions and graphics will be displayed here. The information may only include steps for cleaning the various pieces of the machine by removing the parts for washing/rinsing with water.]

Maintenance: Easy Clean Storage Tray

[Note to Reviewer: Instructions and graphics will be displayed here. The information may only include steps for cleaning the various pieces of the machine by removing the parts for washing/rinsing with water.]

[Machine Storage][Storing Your Machine]

(Put the unit away in a closet or basement until the next use.) (Store [cleaner][your machine] in a protected, dry area. Since this product uses water, it must not be stored where there is a danger of freezing. Freezing will damage internal components and will void the warranty.)

Troubleshooting

Problem	Possible causes	Remedies
[Title Display]	[Listed causes]	[Suggested fix]

[Note to Reviewer: (parenthetical text) is optional; [bracketed text] is informational or an interchangeable option is presented, at least one of which must be used.]

Warranty

[Note to Reviewer: Warranty text displayed here may vary slightly.]

[This warranty gives you specific legal rights, and you may also have other rights which may vary from state to state. If you need additional instruction regarding this warranty or have questions regarding what it may cover, please contact BISSELL® Consumer Care by E-mail or telephone as described below.

It may be necessary to obtain some of your personal information, such as a mailing address, to fulfill terms of this warranty. Any personal data will be handled pursuant to BISSELL's Privacy Policy, which can be found online at www.BISSELL.com/privacy-policy.

Limited Two-Year Warranty

Subject to the ***Exceptions and Exclusions from the Terms of the Limited Warranty**, upon receipt of the product BISSELL will repair or replace (with new, refurbished, lightly used, or remanufactured components or products), at BISSELL's option, free of charge from the date of purchase by the original purchaser, for two years, any defective or malfunctioning part.

See information below on "If your BISSELL product should require service".

This warranty applies to product used for personal, and not commercial or rental, service. This warranty does not apply to fans or routine maintenance components

such as filters, belts or brushes. Damage or malfunction caused by negligence, abuse, neglect, unauthorized repair, or any other use not in accordance with the user guide is not covered. This warranty will only be valid if the product is used in the same country in which it was sold.

BISSELL is not liable for incidental or consequential damages of any nature associated with the use of this product. BISSELL's liability will not exceed the purchase price of the product.

Some states do not allow the exclusion or limitation of incidental or consequential damages, so the above limitation or exclusion may not apply to you.

***Exceptions and Exclusions from the Terms of the Limited Warranty**

This warranty is exclusive and in lieu of any other warranties, either oral or written. Any implied warranties, which may arise by operation of law, including the implied warranties of merchantability and fitness for a particular purpose, are limited to the two-year duration from the date of purchase as described above.

Some states do not allow limitations on how long an implied warranty lasts, so the above limitation may not apply to you.]

(NOTE: Please keep your original sales receipt. It provides proof of date of purchase in the event of a warranty claim.)

[Alternate]

[Limited 18-month warranty, may vary by state. Visit support.BISSELL.com or call 1-844-383-2630 for complete warranty information.]

Service

[Note to Reviewer: Machine Service contact information will be provided here.]

[Note to Reviewer: (parenthetical text) is optional; [bracketed text] is informational or an interchangeable option is presented, at least one of which must be used.]

Register your product today!

[Note to Reviewer: Product registration, rewards, feedback request etc. will be inserted here.]

Manufactured [by] [for]:
Bissell Homecare, Inc.
2345 Walker Ave, NW
Grand Rapids, MI 49544

Manufactured by
[BISSELL brand
Questions or comments 1.800.237.7691 ©(year) BISSELL Homecare Inc., Grand Rapids, MI
49544 USA
www.bissell.com]

©(year) BISSELL Homecare Inc.
BISSELL International Trading Company BV
Stadhouderskade 55,
1072 AB Amsterdam
The Netherlands

[Questions?] [Comments?] [Call XXX-XXX-XXXX]

For Consumer Care contact:
BISSELL Homecare, Inc.
P.O. Box 1888
Grand Rapids, MI 49501

[Optional variations]



We're Waggin' Our Tails!

BISSELL® proudly supports BISSELL Pet Foundation® and its mission to help save homeless pets. When you buy a BISSELL product, you help save pets, too. We're proud to design products that help make pet messes, odors and pet homelessness disappear.
Visit [BISSELLsavespets.com](https://www.bissellsavespets.com) to learn more.

♥ Every Purchase Saves Pets™

BISSELL proudly supports BISSELL Pet Foundation® and its mission to help save homeless pets. When you buy a BISSELL® product, you help save pets, too. We're proud to design products that help make pet messes, odors and pet homelessness disappear. Visit [BISSELLsavespets.com](https://www.bissellsavespets.com) to learn more.