



UNITED STATES ENVIRONMENTAL PROTECTION AGENCY
WASHINGTON, DC 20460

OFFICE OF CHEMICAL SAFETY
AND POLLUTION PREVENTION

July 7, 2022

Rebecca Mannion
Agent
BISSELL Homecare, Inc.
Electronic Transmittal: rmannion@srconsultants.com

Subject: Notification per PRN 98-10 – Add Alternate Brand Names and Other Minor Changes
Product Name: Jesse
EPA Registration Number: 6297-2
Received Date: June 30, 2022
Action Case Number: 00374099

Dear Rebecca Mannion:

The Agency is in receipt of your Application for Pesticide Notification under Pesticide Registration Notice (PRN) 98-10 for the above referenced product. The Antimicrobials Division (AD) has conducted a review of this request for its applicability under PRN 98-10 and finds that the action requested falls within the scope of PRN 98-10.

The label submitted with the application has been stamped “Notification” and will be placed in our records.

Should you wish to add/retain a reference to the company’s website on your label, then please be aware that the website becomes labeling under the Federal Insecticide Fungicide and Rodenticide Act and is subject to review by the Agency. If the website is false or misleading, the product would be misbranded and unlawful to sell or distribute under FIFRA section 12(a)(1)(E). 40 CFR 156.10(a)(5) lists examples of statements EPA may consider false or misleading. In addition, regardless of whether a website is referenced on your product’s label, claims made on the website may not substantially differ from those claims approved through the registration process. Therefore, should the Agency find or if it is brought to our attention that a website contains false or misleading statements or claims substantially differing from the EPA approved registration, the website will be referred to the EPA’s Office of Enforcement and Assurance.

The following alternate brand names have been added to the product record:

- BISSELL Hard Floor Sanitize Citrus
- BISSELL Hard Floor Sanitize Fresh Citrus
- BISSELL Hard Floor Sanitize Orange Blossom

Page 2 of 2
EPA Reg. No. 6297-2
Action Case Number: 00374099

If you have any questions, you may contact Joe Daniels via email at daniels.joseph@epa.gov.

Sincerely,

A handwritten signature in black ink, appearing to be 'J. Hebert', written over a faint, large, stylized letter 'D'.

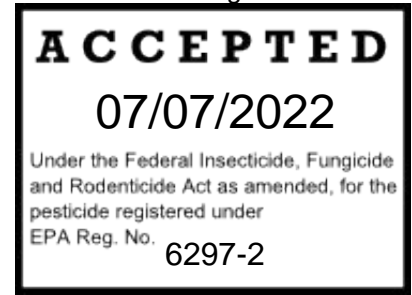
for

John Hebert, Branch Chief
Regulatory Management Branch 1
Antimicrobials Division (7510M)
Office of Pesticide Programs

(Note to Reviewer: (parenthetical text) is optional; [bracketed text] is informational or an interchangeable option is presented.)

(MASTER LABEL)

JESSE



(Alternate Brand Names:

BISSELL® Hard Floor Sanitize
BISSELL® Hard Floor Sanitize
Citrus
BISSELL® Hard Floor Sanitize Fresh
Citrus
BISSELL® Hard Floor Sanitize
Orange Blossom
BISSELL® Hard Floor Sanitize
Cleaner
BISSELL® Hard Floor Sanitizer
BISSELL® Hard Floor Sanitize
BISSELL® Deodorizer
BISSELL® Hard Floor Sanitize
Cleaner concentrate
BISSELL® Hard Floor Sanitizer
concentrate
BISSELL® Tile Floor Sanitize
Cleaner
BISSELL® Tile Floor Sanitizer
BISSELL® Tile Floor Sanitize
Deodorizer
BISSELL® Tile Floor Sanitize
Cleaner concentrate
BISSELL® Wood Floor Sanitize
Cleaner
BISSELL® Wood Floor Sanitize
Cleaner
BISSELL® Wood Floor Sanitizer
BISSELL® Wood Floor Sanitize
concentrate
BISSELL® Wood Floor Sanitize
Cleaner concentrate
BISSELL® Wood Floor Sanitizer
concentrate
BISSELL® Antibacterial Hard Floor
Cleaner
BISSELL® Antibacterial wood Floor
Cleaner
BISSELL® Antibacterial tile Floor
Cleaner
BISSELL® Pet Hard Floor Sanitize
BISSELL® Pet Hard Floor Sanitize
Cleaner
BISSELL® Pet Hard Floor Sanitizer
BISSELL® Pet Hard Floor Sanitize
Deodorizer
BISSELL® Pet Hard Floor Sanitize
Cleaner concentrate
BISSELL® Pet Hard Floor Sanitizer
concentrate
BISSELL® Pet Tile Floor Sanitize
Cleaner
BISSELL® Pet Tile Floor Sanitizer
BISSELL® Pet Tile Floor Sanitize
Deodorizer
BISSELL® Pet Tile Floor Sanitize
Cleaner concentrate
BISSELL® Pet Wood Floor Sanitize

BISSELL® Pet Wood Floor Sanitize
Cleaner
BISSELL® Pet Wood Floor Sanitizer
BISSELL® Pet Wood Floor Sanitize
concentrate
BISSELL® Pet Wood Floor Sanitize
Cleaner concentrate
BISSELL® Pet Wood Floor Sanitizer
concentrate
BISSELL® Pet Antibacterial Hard
Floor Cleaner
BISSELL® Pet Antibacterial Wood
Floor Cleaner
BISSELL® Pet Antibacterial Tile
Floor Cleaner
BISSELL® Clean + Sanitize
BISSELL® Hard Floor Clean +
Sanitize
BISSELL® Clean + Antibacterial
BISSELL® Hard Floor Clean +
Antibacterial
BISSELL® Pet Clean + Sanitize
BISSELL® Pet Hard Floor Clean +
Sanitize
BISSELL® Pet Clean + Antibacterial
BISSELL® Pet Hard Floor Clean +
Antibacterial
BISSELL® Clean + Pet Sanitize
BISSELL® Hard Floor Clean + Pet
Sanitize
BISSELL® Clean + Pet Antibacterial
BISSELL® Hard Floor Clean +
Antibacterial Pet
BISSELL® Clean + Sanitize Pet
BISSELL® Hard Floor Clean +
Sanitize Pet
BISSELL® Clean + Antibacterial Pet
BISSELL® Hard Floor Clean +
Antibacterial
BISSELL® Wash + Sanitize
BISSELL® Wash + Antibacterial
BISSELL® Wash + Sanitize Pet
BISSELL® Wash + Antibacterial Pet
BISSELL® Wash + Pet Sanitize
BISSELL® Wash + Pet Antibacterial

Sanitaire For Use with Sanitaire
SC930 Series Formulated by
BISSELL Hard Floor Sanitize

Sanitaire Formulated by BISSELL
Hard Floor Sanitize For Use with
Sanitaire SC930 Series

Sanitaire Formulated by BISSELL
Hard Floor Sanitize

Sanitaire For Use with Sanitaire
SC930 Series Hard Floor Sanitize
Formulated by BISSELL

Sanitaire For Use with Sanitaire
SC930 Series Hard Floor Sanitize

Formulated by BISSELL Hard Floor
Sanitize Sanitaire For Use with
Sanitaire SC930 Series

Formulated by BISSELL Hard Floor
Sanitize Sanitaire

Formulated by BISSELL Hard Floor
Sanitize

Hard Floor Sanitize Formulated by
BISSELL Sanitaire For Use with
Sanitaire SC930 Series

Hard Floor Sanitize Formulated by
BISSELL

Sanitaire Hard Floor Sanitize by
BISSELL
Sanitaire Hard Floor Sanitize
Formulated by BISSELL

PAWSITIVELY CLEAN® Hard Floor
Sanitizer
PAWSITIVELY CLEAN® Hard Floor
Sanitizer + Deodorizer

BETTER LIFE® Hard Floor Sanitizer
BETTER LIFE® Hard Floor Sanitizer
+ Deodorizer

INSTACLEAN® Hard Floor Sanitizer
INSTACLEAN® Hard Floor Sanitizer
+ Deodorizer

STAIN & STINK® Hard Floor
Sanitizer
STAIN & STINK® Hard Floor
Sanitizer + Deodorizer

BISSELL® BIG GREEN® Hard
Floor Sanitizer
BISSELL® BIG GREEN® Hard
Floor Sanitizer + Deodorizer
BISSELL PET FOUNDATION® Hard
Floor Sanitizer
BISSELL PET FOUNDATION® Hard
Floor Sanitizer + Deodorizer

(Note to Reviewer: (parenthetical text) is optional; [bracketed text] is informational or an interchangeable option is presented.)

(FRONT PANEL)

(HARD SURFACE) (HARD FLOOR) (WOOD FLOOR) (SANITIZER)– (CLEANER)
(CLEANING) - (DEODORIZER) – (ANTIBACTERIAL)

[{(Insert usage site) [Cleaner] [Cleaning], [Bacteria* (destroyer) (killer) (reducer) (cleanser) (cleaner) (cleaning)], [Antimicrobial] [Antibacterial] [(Hard) (Wood) Floor Cleaner (for pet messes)], [(Hard) (Wood) Floor Cleaning (for pet messes) and Sanitizer], [(Pet) Cleaner(, & Deodorizer(, & (+) Sanitizer (Antibacterial)], [Dual Action (Pet) Cleaner & Deodorizer] [Dual Action (Pet) Cleaner(, & Sanitizer (Antibacterial)], [Triple Action (Pet) Cleaner(, & Deodorizer(, and) (+) Sanitizer (Antibacterial)], [(Insert usage site) (Pet) Deodorizer (and) (+) (Sanitize(r)) (Antibacterial)], [(Insert usage site-) (Pet) Odor Neutralizer], [(Insert usage site) (Pet) Odor Eliminator], [(Insert usage site) Refresher], [[Antimicrobial] [Antibacterial] (Hard) (Wood) Floor Cleaner formula (and) (+) Sanitize(r)], [(Sanitization) (Sanitizing) [(Antimicrobial) [Antibacterial] (Hard) (Wood) Floor Cleaning formula], [[Antimicrobial] [Antibacterial] Formula for (hard) (wood) floors]

Active Ingredients:

Alkyl (60% C ₁₄ , 30% C ₁₆ , 5% C ₁₂ , 5% C ₁₈) dimethyl benzyl ammonium chlorides	0.21%
Alkyl (68% C ₁₂ , 32% C ₁₄) dimethyl ethylbenzyl ammonium chlorides	0.21%
Other Ingredients	99.58%
Total:	100.00%

EPA Reg. No.: 6297-2
EPA Est. No.: [XXXX-XXX-XXX]

Keep Out of Reach of Children
CAUTION

See additional precautionary statements on [back][side][right][left][other] [panel] of label [below].

[Manufactured] [Distributed] [by] [for]:
Bissell Homecare, Inc.
2345 Walker Ave, NW
Grand Rapids, MI 49544

Batch/Lot: (Note to Reviewer: The lot or batch number may also be stamped or imprinted directly on the packaging.)

(Net Contents:) _____
[#_ (pre-measured [packets] [sachets]), fl. oz. each (Total Net Contents _____)]

(Note to Reviewer: (parenthetical text) is optional; [bracketed text] is informational or an interchangeable option is presented.)

[Note to Reviewer: Boxed format or bullets may be used in First aid section if label space permits]

FIRST AID

If in Eyes: Hold eye open and rinse slowly and gently with water for 15-20 minutes. Remove contact lenses, if present, after the first 5 minutes, then continue rinsing. Call a poison control center or doctor for treatment advice.

Have the product container or label with you when calling a poison control center or doctor, or going for treatment.

PRECAUTIONARY STATEMENTS HAZARDS TO HUMANS AND DOMESTIC ANIMALS

CAUTION. Causes moderate eye irritation. Avoid contact with eyes or clothing. Wash thoroughly with soap and water after handling and before eating, drinking, chewing gum, using tobacco, or using the toilet.

Recommended Use (Location)

[Residential Locations:]

All around the house [‡]	Cabin(s)	Family Room(s)	Mud Room(s)
All around the home [‡]	Camper(s)	Garage(s)	Nursery (Nurseries)
Attic(s)	Closet(s)	Home(s)	Pet area(s)
Baby's Room(s)	(Damp) Storage Area(s)	House(s)	Playroom(s)
Basement(s)	(Damp) Storage Room(s)	Laundry Room(s)	Sunroom(s)
Bathroom(s)	Den(s)/(Study(ies))	Living Room(s)	Vacation home(s)
Bedroom(s)	Dining Room(s)	Mobile Home(s)	Vehicles
Boat(s)	Dorm(s)		

[‡] Non-food contact surfaces only

[Commercial/Institutional Locations:]

Airport(s)	Fast Food Restaurant(s) [‡]	Motel(s)	Spa(s) (Massage) (Facial) (Hair) (&) [Salon(s)]
Bowling Alley(s)	Funeral Home(s)	[Police] [and] [or] [Fire] Vehicle(s)	Sports Arena(s) [Stadium(s)]
(School) Bus(es)	Gas Station(s)	Public Area(s)	Subway(s)
Cafeterias [‡]	Greenhouse(s)	Public Facility(ies)	Supermarket(s) [‡]
Campground(s)	Health Club(s) [(Facility(ies))]	Public Telephone(s) (Booth(s))	Tanning Spa(s)
Church(es)	Hotel(s)	Recreational Center(s) [Facility(ies)]	Tattoo Parlor(s)
College(s)	Industrial Facility(ies)	Rest Stop(s)	Taxi
Concert Venue(s)	Institutional [Public] Bathrooms [Restrooms]	Restroom(s) [Restroom area(s)]	Transportation Terminal(s)
Convenience Store(s)	[Institutional] Laundromat(s)	Retail and Wholesale Establishment(s)	Train(s)
Convention Center(s)	Institution(s)	Retail Business(es)	University(ies)
Correctional Facility(ies)	Kennel(s)	[Retail] [Wholesale] Florists	Veterinary Clinic(s)
Cruise Ship(s) [‡]	Library(ies)	Ride Share(s)	Warehouse Club(s)
Day Care center(s) [‡]	Locker Room(s)	School(s)	
Discount Retailer(s)	Lounge(s)	(Pet) Shelter(s)	
Dorm(s)/Dormitories	Mall(s)	Shipper(s)	
Elevator(s)	General Merchandise Stor(es)	Shopping Center(s)	
Factory(ies)	Military Installation(s)	Shop(s)	
Fairground(s) [Festival ground(s)] [‡]	Mortuary(ies)	Shower Room(s)	

[‡] Non-food contact surfaces only

[‡] Indoor areas only

(Note to Reviewer: (parenthetical text) is optional; [bracketed text] is informational or an interchangeable option is presented.)

Recommended Use (Surfaces) [Note to reviewer: listed items may include a graphic depicting surface as presented at in the Graphics section of the label.]

[Floors/Flooring:]

[Note to Reviewer: If the phrase “sealed, non-porous:” is used once with the following surfaces in a list, then the phrase does not need to be repeated prior to each surface listed.]

Sealed, Non-porous Hardwoods	Sealed, Non-porous Wood Floors	Sealed, Non-porous Ceramic Tile(s)	Vinyl (Tile) (and) (Luxury Vinyl (Tile))
Sealed, Non-porous Floors	Sealed, Non-porous Hard Floors	Sealed Terrazzo	Sealed, Non-porous Cement
Sealed, Non-porous Marble	Sealed, Non-porous Stone		

[Note to Reviewer: Alternatively may list as:]

Hardwoods[∞], Floors[∞], Wood Floors[∞], Hard Floors[∞], Ceramic Tile[∞], Cement[∞], Marble[∞], Stone[∞], Terrazzo[∞], (and)(or) Vinyl

[∞] Sealed, Non-porous

[Non-Floor Surfaces:]

Cabinets	Light Switches/Switch Plates	Refrigerator Exteriors	Telephones
Chairs	Faucets	Sealed, Non-Porous (Hard)Wood(S)	Vanities
Changing Tables	Finished Wood	Sports Equipment	Walls
Countertops ^{‡+}	Furniture ^B	Toilet Seats/Exteriors	Work Surfaces
Desks	Keyboards	Toys ^B (Followed By Potable Water Rinse)	
Door Handles/Knobs	Range Hoods	Trash (Garbage) Cans, Diaper Pails	

[Non-Floor Surface Materials:]

Glass	Laminate	Sealed, Non-porous Ceramic	Sealed Terrazzo
Glazed enamel	Metal	Sealed, Non-porous Cement	Stainless steel
Glazed porcelain	Plastic	Sealed, Non-porous Marble	Vinyl
Formica	Plexiglas	Sealed, Non-porous Stone	

(Note to Reviewer: (parenthetical text) is optional; [bracketed text] is informational or an interchangeable option is presented.)

DIRECTIONS FOR USE

It is a violation of Federal law to use this product in a manner inconsistent with its labeling. Read and follow all directions and precautions on this product label.

[Note to Reviewer: Table is optionally included on a printed label. It is not required to include the table in full, but at least one dilution instruction will be listed on the printed label if there is no user guide/manual brochure to reference.]

(Product Dilution Instructions)

Amount of Product (fl. oz.)	Amount of (Warm) Tap Water
0.5	3 fl. oz.
1	6 fl. oz.
1.5	9 fl. oz.
2	12 fl. oz.
2.5	15 fl. oz.
3	18 fl. oz.
3.5	21 fl. oz.
4	24 fl. oz.
4.5	27 fl. oz.
5	30 fl. oz.
5.5	33 fl. oz.
6	36 fl. oz.
6.5	39 fl. oz.
7	42 fl. oz.
7.5	45 fl. oz.
8	48 fl. oz.
8.5	51 fl. oz.
9	54 fl. oz.
9.5	57 fl. oz.
10	60 fl. oz.
22	1 gal.
32	1.5 gal.
44	2 gal.
54	2.5 gal.

[Section I. Directions and Text For Use on Floors with a BISSELL Machine]

[For use with (BISSELL) (CrossWave) (with steam) (and) (SpinWave) (Sanitaire (SC930 Series) (machines).]

[Suitable for use with (BISSELL) (CrossWave) (with steam) (and) (SpinWave) (Sanitaire (SC930 Series) (machines)]

[For use with BISSELL Wet Cleaning System machines.]

(Flush machine with clean water after use.)

[Note to Reviewer: The below statement must appear on the label should the product be for use with a BISSELL machine with a fill line or instruction to meet a fill line.]

Read [User] [Guide] [Manual] [Brochure] [directions on machine] fully prior to use.

(Note to Reviewer: (parenthetical text) is optional; [bracketed text] is informational or an interchangeable option is presented.)

[Note to Reviewer: By filling to the lines indicated on the BISSELL machine tank, the solution will mix at a dilution equivalent to 1 part formula + 6 parts water.]

How to use (in) (with) (CrossWave) (with steam) ([Sanitaire] [SC930 [insert other series number here] Series]) (Robot) (insert equivalent brand name) (machine):

1. *[for machines with a small and large fill line]*

Fill machine formula tank with (warm) water to Water fill line for small areas. Then add formula to Formula fill line for small areas. Or add (warm) water to Water fill line for large areas, and then add formula to Formula fill line for large areas. Water to concentrate ratio is 6:1. Cap tank and return to machine.

[for machines with only one fill line:]

Fill machine formula tank with (warm) water to Water fill line. Then add formula to Formula fill line. Water to concentrate ratio is 6:1. Cap tank and return to machine.

2. Use machine as directed in the [User] [Guide] [Manual] [Brochure] [directions on machine] under the heading “**Cleaning Your Hard Floors**”.

To clean: Hold [Press] the spray trigger ((or) for [Robot] [insert Robot brand name here]) set to “Clean” (mode) to apply solution to floor. (For heavier soils press the steam button, if available.) **To Sanitize:** Remove visible soil. [Hold [Press] spray trigger] ((or) for [Robot] [insert Robot brand name here]) set to “Spot” Mode) to [apply] [dispense] solution to floor. Allow to remain visibly wet for 5 minutes.

3. Empty (dirty water) (pick-up) tank down the drain.

4. Flush tank, filter and float with clean water after use. Allow to air dry.

5. Stay off cleaned area until completely dry.

How to use (in) (with) (SpinWave) (with steam) (Sanitaire) (Robot) (machine):

1. *[for machines with a small and large fill line]*

Fill machine formula tank with (warm) water to Water fill line for small areas. Then add formula to Formula fill line for small areas. Or add (warm) water to Water fill line for large areas, and then add formula to Formula fill line for large areas. Water to concentrate ratio is 6:1. Cap tank and return to machine.

[for machines with only one fill line:]

Fill machine formula tank with (warm) water to Water fill line. Then add formula to Formula fill line. Water to concentrate ratio is 6:1. Cap tank and return to machine.

2. Use machine as directed in the machine [User] [Guide] [Manual] [Brochure] [directions on machine] under the heading “**Cleaning Your Sealed Hard Floors**”.

To clean: Push [Hold] the SPRAY button to dispense solution ((or) for [Robot] [insert Robot brand name here]) set to “Clean” (mode). (For heavier soils press the steam button, if available.) **To Sanitize:** Remove visible soil. Push [Hold] the SPRAY button ((or) for [Robot] [insert Robot brand name here]) set to “Spot” Mode) to [apply] [dispense] solution. Allow to remain visibly wet for 5 minutes.

3. Stay off cleaned area until completely dry.

[Note: Any solution remaining in the clean water tank should be emptied prior to machine storage.]

How to Use (with pre-measured packets):

[For Use with pre-measured sachets/packets in machine with an integrated dispenser in formula-only tank]

(Note to Reviewer: (parenthetical text) is optional; [bracketed text] is informational or an interchangeable option is presented.)

1. Fill the Clean Water Tank with (warm) water to the Fill line indicated on the tank. (Use warm (140F/60C max) water.)
 2. Lift Formula lid and place a (BISSELL) [insert product name] [sachet] [packet] [pouch] in holder.
 3. Use machine as directed [in the machine [User] [Guide] [Manual] [Brochure]] [on machine] under the heading “**Cleaning Your Sealed Hard Floors**”.
- To clean:** Push the SPRAY button to dispense solution. **To Sanitize:** Remove visible soil. Push the SPRAY button to dispense solution. Allow to remain visibly wet for 5 minutes.
4. Stay off cleaned area until completely dry.

Note: Any solution remaining in the clean water tank should be emptied prior to machine storage.

[For Use with pre-measured sachets/packets in machine withOUT an integrated dispenser in formula-only tank]

1. Fill the Clean Water Tank with (warm) water to the Fill line indicated on the tank. (Use warm (140F/60C max) water.)
 2. Tear open (BISSELL) [insert product name] [sachet] [packet] [pouch] at indicated notch and pour contents into tank.
 3. Use machine as directed in the machine User [Guide] [Manual] [Brochure] under the heading “**Cleaning Your Sealed Hard Floors**”.
- To clean:** Push the SPRAY button to dispense solution. **To Sanitize:** Remove visible soil. Push the SPRAY button to dispense solution. Allow to remain visibly wet for 5 minutes.
4. Stay off cleaned area until completely dry.

Note: Any solution remaining in the clean water tank should be emptied prior to machine storage.

[Section II. Directions and Text For Use on Floors with a NON-BISSELL Machine]

[Use directions for a non-BISSELL/Fill line machine:]

How to use with a hard floor cleaning device:

1. Fill machine formula tank with 4 fl. oz. of product [*insert brand name*] and 24 fl. oz. (warm) water (or equivalent dilution). [Fill machine formula tank with product and water as indicated in the table (above)(below).]
2. Pre-clean floors to remove visible soil.
3. **To Sanitize:** Spray or apply solution on hard, non-porous floors and allow to remain visibly wet for 5 minutes.
4. Stay off cleaned area until completely dry.

Note: Any solution remaining in the solution tank should be emptied prior to machine storage.

[Section III. Directions and Text For Use on Floors without a floor cleaning device]

[Directions for Mop & Bucket]

How to mop your floor (without a BISSELL machine) [Directions for Use]:

1. Clean the floors to remove visible soil.
2. Fill bucket [container] with [1 gallon] of (warm) (tap) water and add 22 fl. oz. of product (or equivalent dilution) [*Note to Reviewer: may replace dilution values as presented in Product Dilution Instructions Table*].
3. Mop hard, non-porous floors until thoroughly wet, rewetting the mop as needed.
4. Allow floors to remain visibly wet for 5 minutes. (Stay off sanitized area until completely dry.)

(Note to Reviewer: (parenthetical text) is optional; [bracketed text] is informational or an interchangeable option is presented.)

5. Replace use solution when it becomes heavily soiled.

Not for use on unsealed, damaged, or unfinished floors.

[Section IV. Directions and Text For Use on Non-Floor Hard, Non-Porous Surfaces]

To sanitize hard, non-porous, non-food contact surfaces:

1. Mix 4 fl. oz. of product [insert product name] with (warm) 24 fl. oz. tap water (or equivalent dilution) *[Note to Reviewer: may replace dilution values as presented in Product Dilution Instructions Table]*.
2. Clean to remove visible soil.
3. Apply product with a cloth or trigger sprayer until thoroughly wet (or immerse items in a bucket [container]. Make fresh solution if it becomes heavily soiled or diluted.).
4. Allow surfaces to remain visibly wet for 5 minutes.
5. Allow to air dry(, or wipe dry after contact time).

For more information about using this product, visit www.bissell.com.

(Note to Reviewer: (parenthetical text) is optional; [bracketed text] is informational or an interchangeable option is presented.)

STORAGE AND DISPOSAL

Storage: Store in original container in areas inaccessible to small children. Store between 35°F to 85°F in dry, well-ventilated area away from chemicals, direct light, heat or open flame. Do not mix with other cleaning products. Keep securely closed. **Pesticide Disposal and Container**

Handling: Nonrefillable container. Do not reuse or refill this container. Wrap [container] and put in trash or offer for recycling if available.

[For Pre-measured Packets/Sachets:]

Once cleaning is complete and [sachet] [packet] [pouch] is empty, recycle product according to local regulations if available or put in trash.

(Manufactured [Distributed] by)

(BISSELL brand)

(Questions) (or) (comments) 1.800.237.7691

©(year) BISSELL Homecare Inc., Grand Rapids, MI 49544 USA

www.BISSELL.com)

©(year) BISSELL Homecare International
BISSELL International Trading Company BV
Postbus 12874
1100 AW Amsterdam Zuidoost
The Netherlands)

©(year) BISSELL Homecare International
BISSELL International Trading Company BV
Willem Fenengastraat 14
1096 BN Amsterdam
The Netherlands)

[Questions?] [Comments?] [Call XXX-XXX-XXXX]

(For Consumer Care contact:
BISSELL Homecare, Inc.
P.O. Box 1888
Grand Rapids, MI 49501)

[Made in (insert country of manufacture origin) (with globally sourced parts)]

(Order more, Learn about ingredients. (www.bissell.com)(www.BISSELL.com/patents)
1.800.237.7691)

Optional Label Statements, Marketing Claims, and Pictograms:

[Note to Reviewer: below qualifiers are not optional when a selected Marketing Claim includes the symbol indicated here.]

***Kills 99.9% of *Enterobacter aerogenes* (ATCC 13408) and *Staphylococcus aureus* (ATCC 6538) (Staph^)**

****Non-living allergens including: Pollen, Pet dander, Dust mite allergen(s)
(Sanitizing claims)**

(Note to Reviewer: (parenthetical text) is optional; [bracketed text] is informational or an interchangeable option is presented.)

Cleans (&) (+) Sanitizes
Cleans (&) (+) Sanitizes (insert usage site)
Cleans (&) (+) Sanitizes in 5 minutes on (insert usage site) (insert usage surface)
Kills 99.9% of bacteria*
Sanitizes (insert usage site) (insert usage surface) in 5 minutes
Sanitizes (insert usage sites) (insert usage surface)
Sanitizes
Sanitizes and eliminates (pet odors) (odors) (allergens**) (and) (everyday dirt) (spots and stains)
Cleans and sanitizes, eliminates 99.9% of bacteria*
Deep clean beyond what's seen™²
Eliminates 99.9% of bacteria*
Removes (the most) (common) allergens**
Eliminates (the most) (common) allergens**
Go beyond surface cleaning²
Goes beyond surface cleaning²
Leaves (insert usage surfaces) clean and sanitized
Leaves (insert usage surfaces) cleaned, sanitized, deodorized
Leaves (insert usage surfaces) sanitized
Cleans, sanitizes, refreshes (insert usage site) (insert usage surface)
Sanitize after cleaning your pet messes
Cleans (+) (and) (sanitizes) (+) (and) (deodorizes) (+) (and) (freshens) in one easy step²
2 in 1 (Dual Action) (formula) – cleans, deodorizes (in 1 easy step²)
2 in 1 (Dual Action) (formula) – cleans, sanitizes (in 1 easy step²)
2 in 1 (Dual Action) (formula) – freshens, deodorizes (in 1 easy step²)
2 in 1 (Dual Action) (formula) – freshens, sanitizes (in 1 easy step²)
2 in 1 (Dual Action) (formula) – sanitizes, deodorizes (freshens) (in 1 easy step²)
3 in 1 (Triple Action) (formula) – cleans, sanitizes, deodorizes (in 1 easy step²)
3 in 1 (Triple Action) (formula) – freshens, sanitizes, deodorizes (in 1 easy step²)
4 in 1 (Four in One) (formula) – cleans, sanitizes, deodorizes, freshens (in 1 easy step²)
Kills 99.9% of *Enterobacter aerogenes* and *Staphylococcus aureus* (staph[^]) on (insert usage site) (insert usage surface) in 5 minutes
Kills 99.9% of *Enterobacter aerogenes* and *Staphylococcus aureus* (staph[^]) on (insert usage site) (insert usage surface) in 5 minutes
Destroys 99.9% of bacteria* on (insert usage site) (insert usage surface)
Kills 99.9% of bacteria* at the source
Effectively kills 99.9% of bacteria*
Kills 99.9% of bacteria* in 5 minutes on (insert usage surface)
Kills 99.9% of bacteria* in 5 minutes for (insert usage site) (insert usage surface)
Kills 99.9% of bacteria* on (insert usage site) (insert usage surface)
Kills 99.9% of household bacteria* on (insert usage site) (insert usage surface)
(Kills) (destroys) (eliminates) 99.9% of *Staphylococcus aureus* (staph[^]) (and) *Enterobacter aerogenes* in in 5 minutes on (insert usage surface) (insert usage site)
(Kills) (destroys) (eliminates) 99.9% of *Staphylococcus aureus* (staph[^]) (and) *Enterobacter aerogenes* in 5 minutes on (insert usage site) (insert usage surface)
To eliminate 99.9% of bacteria* on (insert usage site) (insert usage surface)
Kills 99.9% of bacteria* in (only) 5 minutes on (insert usage site) (insert usage surface)
(Both) Cleans & Sanitizes - better than cleaning alone
Cleans & Sanitizes in 5 minutes on (insert usage site) (insert usage surface)
Cleans & Sanitizes in 5 minutes on (insert usage site) (insert usage surface)
One step clean(s) and sanitizes(s)²

(Note to Reviewer: (parenthetical text) is optional; [bracketed text] is informational or an interchangeable option is presented.)

Neutralizes and reduces the growth of bacteria*
Makes sanitizing easy
Easy (sanitizing)
(Antimicrobial) (formula) cleans and sanitizes
The easy, effective, and convenient way to sanitize (insert usage site) (insert usage surface)
Antibacterial
Leaves (insert usage site) (insert usage surface) sanitary
Sanitizes as it cleans
For cleaning and sanitizing (insert usage site) (insert usage surface)
Antibacterial formula cleans and sanitizes in one (1) step
Cleans, (Sanitizes), (Deodorizes), (Freshens), (Removes Allergens**) in (one) (1) easy step²
Cleans (+) (Sanitizes) (+) (Deodorizes) (+) (Freshens) (+) (Removes Allergens**) (+) (Removes Odors)
Kills 99.9% of bacteria* and eliminates (pet) odors for a cleaner, fresher home
Multi-purpose formula (cleans) (and) (sanitizes) (and) (deodorizes) (and) (freshens) (and) (eliminates allergens**)
One step (cleans) (and) (sanitizes) (and) (deodorizes) (and) (freshens) (and) (eliminates allergens**) ²
2 in 1 formula cleans and sanitizes
2 in 1 formula sanitizes and deodorizes
2 in 1 formula sanitizes and freshens
2 in 1 formula sanitizes and eliminates allergens**
3 in 1 formula cleans, sanitizes and deodorizes
3 in 1 formula cleans, sanitizes and freshens
3 in 1 formula cleans, sanitizes and eliminates allergens**
3 in 1 formula sanitizes, deodorizes, and freshens
3 in 1 formula sanitizes, deodorizes, and eliminates allergens**
4 in 1 formula cleans, sanitizes, deodorizes and freshens
4 in 1 formula cleans, sanitizes, deodorizes and eliminates allergens**
4 in 1 formula sanitizes, deodorizes, freshens, and eliminates allergens**
5 in 1 formula cleans, sanitizes, deodorizes, freshens and eliminates allergens**
The easy, effective, and convenient way to sanitize (insert usage site) (insert usage surface)
Makes sanitizing easy
The easy way to clean and sanitize your (insert usage site) (insert usage surface)
Cleans as it sanitizes²
Sanitizes as it cleans²
(Pet) Stain and odor remover and sanitizer
Convenient to use (cleans and sanitizes)
Sanitizes and refreshes
Go beyond surface cleaning
Goes beyond surface cleaning
Cleans and Sanitizes (in one easy step)²
Destroys tough odors and bacteria*
(Removes) (Eliminates) 99.9% of bacteria*
(Sanitization)(Sanitizing)(Antibacterial) Treatment
Stain & odor (remover) (eliminator) that sanitizes as it cleans
Sanitizes as it cleans
Sanitizes and loosens (tough) stains
Stain removal (Clean) (+)(&) Sanitize for a more (effective) clean
Take (more) control of your cleaning with (sanitization) (insert product name)
(clean) (and) (loosen) (tough) stains (and sanitizes)

(Note to Reviewer: (parenthetical text) is optional; [bracketed text] is informational or an interchangeable option is presented.)

One step (cleaning) (and) (sanitizing)²

One easy step!²

Destroys 99.9% of odor causing bacteria on (insert usage sites) (insert usage surface)

Effective to kill 99.9% of odor causing bacteria

Eliminates (pet) odors and (kills) (removes) (gets rid of) 99.9% of the bacteria that cause them

(Eliminates) (removes) 99.9% of (the toughest) (tough) odors caused by bacteria on (insert usage site) (insert usage surface)

Eliminates 99.9% of (tough odor) (tough odors) (bacterial odor) (bacterial odors) (pet odors) on (insert usage site)

(Kills) (destroys) (eliminates) 99.9% of odor causing bacteria

Kills 99.9% of bacteria that cause (pet) odors

Kills 99.9% of odor causing bacteria

Kills 99.9% of odor causing bacteria and eliminates (pet) odors for a cleaner, fresher home

Kills 99.9% of odor causing bacteria and removes (pet) odors for a cleaner, fresher home

Kills 99.9% of odor causing bacteria at the source

Kills 99.9% of odor causing bacteria on (insert usage site) (insert usage surface)

Kills 99.9% of odor causing bacteria (that ordinary cleaners don't)

Neutralizes, reduces, and controls the growth of odor causing bacteria

Removes (pet) odors [and kills (removes) (gets rid of) 99.9% of the bacteria that cause them]

Removes (99.9% of bacterial odor) (99.9% of bacterial odors) (pet odors) on (insert usage site) (insert usage surface)

To eliminate 99.9% of odor causing bacteria on (insert usage site) (insert usage surface)

To remove 99.9% of odor causing bacteria on (insert usage site) (insert usage surface)

(Cleaning Claims)

2 in 1 (formula) cleans and deodorizes

2 in 1 (formula) cleans and freshens

2 in 1 (formula) cleans and [eliminates] [removes] allergens**

2 in 1 (formula) deodorizes and freshens

2 in 1 (formula) deodorizes and [eliminates] [removes] allergens**

2 in 1 (formula) freshens and [eliminates] [removes] allergens**

2 in 1 cleaning formula that cleans and deodorizes at the same time

3 in 1 (formula) cleans, deodorizes, and freshens

3 in 1 (formula) cleans, deodorizes, and [eliminates] [removes] allergens**

3 in 1 (formula) deodorizes, freshens, and [eliminates] [removes] allergens**

3 in 1 (formula) (cleans) (and) (deodorizes) (and) (freshens) (and) (eliminates allergens**) (removes allergens*)

4 in 1 (formula) cleans, deodorizes, freshens and [eliminates] [removes] allergens**

(Antibacterial) (formula) cleans and deodorizes

Cleans (+) (&) deodorizes

Cleans (+) Deodorizes (insert usage site)

Cleans and eliminates 99.9% of odor causing bacteria

Cleans and removes (99.9% of) odor causing bacteria

Cleans, deodorizes and freshens all in one (formula)

Cleans, Deodorizes and Reconditions

Cleans, deodorizes, and freshens (insert usage surfaces)

Cleans, deodorizes, and restores (insert usage surfaces)

(insert usage site) cleaner

Cleans and refreshes pet messes

Eliminates dirt, dust, and common allergens** from (insert usage site) (insert usage surface)

(Note to Reviewer: (parenthetical text) is optional; [bracketed text] is informational or an interchangeable option is presented.)

Eliminates tough stains like (red wine), (food stains), (fruit juice), (pet messes), (mud/dirt), (ink), (chocolate), (coffee/tea), (cola), (blood), (grease), (motor oil), (& more)

Removes dirt, dust, and common allergens** from (insert usage site) (insert usage surface)

Removes tough (dirt) stains like (red wine), (food stains), (fruit juice), (pet messes), (mud/dirt), (ink), (chocolate), (coffee/tea), (cola), (blood), (grease), (motor oil), (& more)

Removes tough (pet) (spots) (stains) (soils) (and) (odors) (on) (insert usage site) (insert usage surface)

Antibacterial

Boost your cleaning results

Booster

Boosts cleaning for a cleaner, fresher home

Boosts cleaning performance for a cleaner, fresher home

Boosts cleaning performance to also deodorize

Boosts cleaning performance

Boosts cleaning performance to clean beyond what's seen

Bring back the shine

Bring back the beauty

Cleaning booster

Cleans & Deodorizes- better than cleaning alone

Cleans (insert usage site) (insert usage surface)

Cleans and protects your hardwoods

Cleans as it deodorizes

Cleans everyday (pet) messes

Cleans plus boosts

Cleans the toughest soils°

Cleans tough (pet spots) (spots) (and) (pet stains) (stains)

Cleans tough stains (on) (insert usage site) (insert usage surface)

Complete (pet) cleaning and deodorizing system

Deep down clean(ing)

Deodorizes as it cleans

Dual action cleaner and deodorizer

Dual action (formula) cleans and deodorizes

Dual action (formula) cleans and freshens

Dual action (formula) cleans and [eliminates] [removes] allergens**

Dual action (formula) deodorizes and freshens

Dual action (formula) deodorizes and [eliminates] [removes] allergens**

Dual action (formula) freshens and [eliminates] [removes] allergens**

Easily removes soils and stains

Effective cleaning of tough (pet) (spots) (stains) and (soils)

(Effectively) removes (tough) dirt and grime

Eliminates (pet odors) (odors) (allergens**) (everyday dirt) (and) (spots and stains)

Eliminates (non-living) allergens**

Eliminates allergens**

Enhances the cleaning performance

Eradicates (tough) (dirt) (and) (stains) (pet stains)

Effective (pet) cleaning

For a cleaner home

For a cleaner, fresher home

For a cleaner, fresher household

For a deep clean

For a thorough deep clean

(Note to Reviewer: (parenthetical text) is optional; [bracketed text] is informational or an interchangeable option is presented.)

Get your floors back to a barefoot clean feeling
Improve your cleaning results
Improve(s) cleaning performance for a cleaner, fresher home
Improves cleaning performance to also deodorize
Improves cleaning performance
Kills (99.9%) (of) odor causing bacteria
Kills (99.9% of) odor causing bacteria on (insert usage site) (insert usage surface) (for a fresh, clean home)
Kills odor causing bacteria (for a fresh, clean home)
Leaves a barefoot clean feeling
Leaves (insert usage site) (insert usage surface) looking clean and refreshed
No (hard) scrubbing required
Perfect for (high touch surfaces): [Toilet Handles], [Door Knobs], [Sinks], [Toys], [desks], [keyboards], [light switches], [telephones]
Pet Stain and odor remover [deodorizer]
Removes (pet odors) (odors) (allergens**) (everyday dirt) (and) (spots and stains)
Removes (pet spots) (spots) (and) (stains) without hard scrubbing
Removes (tough) (dirt) (and) (stains) (pet stains)
Removes (non-living) allergens**
Removes allergens**
Removes deep down (dirt), (pet stains), (stains), (&) (pet odors), (odors)
Removes tough dirt and grime
Removes tough odors and soils (on) (insert use site) (insert usage surface)
Thoroughly cleans and deodorizes (insert usage site) (insert usage surface), eliminating stains, odor causing bacteria, and allergens**
Thoroughly cleans and deodorizes (insert usage site), removing stains, odor causing bacteria, and allergens**
Triple (cleaning) action deep cleans, removes odor-causing bacteria and deodorizes (freshens)
Triple (cleaning) action deep cleans, removes odor-causing bacteria and removes stains
Triple (cleaning) action deep cleans, removes odor-causing bacteria and (removes) (eliminates) allergens**
Triple (cleaning) action deep cleans, deodorizes, and (removes) (eliminates) allergens**
Triple (cleaning) action deep cleans, freshens and (removes) (eliminates) allergens**
Triple (cleaning) action removes odor-causing bacteria, deodorizes and freshens
Triple (cleaning) action removes odor-causing bacteria, deodorizes and removes stains
Triple (cleaning) action removes odor-causing bacteria, deodorizes and (removes) (eliminates) allergens**
Triple (cleaning) action deodorizes, freshens and (removes) (eliminates) allergens**
Triple (cleaning) action deodorizes, freshens and removes stains
Triple action cleans, kills odor-causing bacteria and refreshes
Triple action (formula) cleans, deodorizes, and freshens
Triple action (formula) cleans, deodorizes, and eliminates (removes) allergens**

(Deodorizing Claims)

(Eliminates) (removes) (the toughest) (tough) odors
(Fresh) (Clean) (Orange Blossom) (Citrus) (Fresh Citrus) (fragrance) (scent)
(insert usage site) (insert usage surface) (Pet) Deodorizer
(insert usage site) (insert usage surface) (Pet) Odor Eliminator
(insert usage site) (insert usage surface) (Pet) Odor Neutralizer
(insert usage site) (insert usage surface) (Pet) Spot and stain deodorizer

(Note to Reviewer: (parenthetical text) is optional; [bracketed text] is informational or an interchangeable option is presented.)

(insert usage site) (insert usage surface) Refresher

-(Leaves behind a) Clean, Fresh Scent

(Light), (fresh), clean scent

Eliminates (pet) odors

Removes (pet) odors

Clean and fresh scent

Deodorizes and freshens (leaving a light, clean scent)

Destroys tough (pet) odors

Doesn't just mask (pet) odors

Eliminates (pet) odors, doesn't just mask

Eliminates (tough odor) (tough odors) (pet odors) on (insert usage site)

Eliminates odors (including) (kitchen) (pet) (and) (smoke)

Eliminates the toughest (pet) odors at the source

For ultimate freshness

Fresh, Clean scent

Freshens (insert usage site) (insert usage surface)

Freshens (insert usage site) (insert usage surface)

Freshens home with the scent of (fragrance name)

Full day freshness

Keep (insert usage site) smelling fresher longer

Keeps (insert usage site) smelling fresh

Leaves (insert usage site) (insert usage surface) deodorized

Leaves (insert usage site) (insert usage surface) smelling (refreshed) (fresh) (clean)

Leaves (rooms) (home) smelling fresh and clean

Leaves a fresh scent

Leaves a fresh, clean scent

Leaves a light, clean scent

Leaves your (insert usage site) (insert usage surface) free of (pet) odors

Lifts (pet) odors and freshens

Lightly scented

Lightly scented and suitable for frequent use

Long lasting freshness

Neutralizes (pet) odors

Neutralizes (pet) odors in (insert usage site) (insert usage surface)

Eliminate (pet) odors at (their) (the) source

Remove (pet) odors at (their) (the) source

Refreshes (insert usage site) (insert usage surface)

Refreshes (insert usage site) (insert usage surface)

Removes (pet) odors

Removes (pet) odors doesn't just mask

Removes (tough odor) (tough odors) (pet odors) on (insert usage site) (insert usage surface)

Removes odors (including) (kitchen) (pet) (and) (smoke)

Removes odors+ provides a clean, light scent

Removes the toughest (pet) odors at the source

Removes tough (pet) odors and soils

(General Usage Claims)

(Note to Reviewer: (parenthetical text) is optional; [bracketed text] is informational or an interchangeable option is presented.)

(Alcohol) (Bleach) free
(Okay) (suitable) for daily use
(Okay) (suitable) for monthly use
(Okay) (suitable) for regular use
(Okay) (suitable) for weekly use
(Okay) for everyday use
(Suitable) for (use in) (BISSELL) (CrossWave) (Wet Cleaning System) (machines)
(Use on) (Designed for) (suitable for) (insert usage site) (insert usage surface) that you and your family come in contact with everyday
Bottle contains minimum of X% post-consumer recycled plastic
Carefully designed for home use
Commercial Use
Contains no heavy metals, optical brighteners or dyes
Does not dull floors
Does not harm sealed, nonporous flooring
Dye Free (formula) (technology)
For use with (in) [insert machine brand name] (series)
Great for use in any room of the house
Leaves a clean floor
Leaves (insert usage site) (insert usage surface) clean for children and pets (when used as directed)
Leaves floors virtually streak-free
Leaves no (dulling) (sticky) film
For everyday use
Formulated by BISSELL
Made without chlorine bleach [phosphates]
No streaks
No resoiling
No VOCs
Non-abrasive to (surfaces)(floors)
Non-dulling (solution) (formula) leaves floors clean
No-rinse (formula) (solution)
Okay (suitable) to use daily
Perfect for use on pet messes
Restores a natural shine
Streak-free clean
Suitable & gentle for your (insert usage site) (insert usage surface)
Suitable for your (insert usage sites) (insert usage surface)
Suitable for use on (insert usage site) (insert usage surface)
This product is approved for use on (insert usage sites) (insert usage surface)
Up to (x) uses per bottle
Use daily (in) (on) the (insert usage area) (insert usage surface) your (family)(and)(pets) touch (the most) often
Use throughout your house†
Uncover your floor's natural shine
(Virtually) streak free (clean)
[Without] [No] chlorine bleach

(Easy Use Claims)

(Suitable) For everyday use

(Note to Reviewer: (parenthetical text) is optional; [bracketed text] is informational or an interchangeable option is presented.)

Can be used anytime
Designed for households with pets & kids
Dual (action) (purpose)¹
Dual action¹
Easy to use
Everyday formula
Gentle on floors
Great for (insert usage sites) (insert usage surfaces)
Keep your home clean
Makes cleaning easier
Multi-purpose
Multi-use
No rinsing required
Simple application
Suitable for use around the home
Takes care of (insert usage sites) (insert usage surface) (pet) stains and odors
Treat stains, (pet) odors and allergens**
Triple (action) (purpose)¹
Triple action¹
Works on (most) (insert usage sites) (insert usage surface)

(Other/General Claims)

Bottle contains minimum of X% post-consumer recycled plastic
(Ultra) concentrated

(Marketing Claims)

(2 in 1) (3 in 1) (Action) (product)¹
(Dual) (Triple) (Advanced) Action¹
(Money back) (Satisfaction) (Guarantee) (or your money back) (or it's) (yours) (free)
Bonus (X) (oz) (X %) (more) (free)
New {note to reviewer: use for first 6 months only}
New and improved {note to reviewer: use for first 6 months only}
Save (\$X) now
Trial (size) (pack)
Try (me) (for) (free) (now) (today)
Value (size) (pack)

[Peel back for more information]

(Note to Reviewer: (parenthetical text) is optional; [bracketed text] is informational or an interchangeable option is presented.)

Qualifiers

¹ *Note to Reviewer: Will be qualified by additional marketing claim as listed above or by descriptor as one of the following:*

For “Dual Action” or “2 in 1”

¹ cleaner and sanitizer

¹ cleaner and deodorizer

¹ deodorizer and sanitizer

For “Triple Action” or “3 in 1”

¹ cleaner, sanitizer and deodorizer

¹ cleaner, deodorizer and sanitizer

²when used according to sanitization instructions.

^ton sealed, nonporous floors

^Bhard, nonporous surfaces of

[^]*Note to Reviewer: Will be qualified with a symbol if “Staph” appears without “Staphylococcus aureus” immediately preceding it.*

[^]Staphylococcus aureus

Note to Reviewer: Any combination of soils can be listed in any order and some omitted in relation to cleaning claims:

[°]cleans ((/))removes: red wine, food stains, fruit juice, pet messes, mud/dirt, ink, chocolate, coffee/tea, cola, blood stains, grease, motor oil

(Note to Reviewer: (parenthetical text) is optional; [bracketed text] is informational or an interchangeable option is presented.)

[Pre-Measured Packet Label]

JESSE

Active Ingredients:

Alkyl (60% C ₁₄ , 30% C ₁₆ , 5% C ₁₂ , 5% C ₁₈)	
dimethyl benzyl ammonium chlorides	0.21%
Alkyl (68% C ₁₂ , 32% C ₁₄) dimethyl	
ethylbenzyl ammonium chlorides	0.21%

Other Ingredients.....99.58%

Total: 100.00%

EPA Reg. No.: 6297-2

EPA Est. No.: [XXX-XXX-XXX]

Keep Out of Reach of Children CAUTION

See [outer] box [container] [bag] for additional precautionary statements and directions for use.

Once cleaning is complete and [sachet] [packet] [pouch] is empty, recycle product according to local regulations if available or put in trash.

[Manufactured] [Distributed] [by] [for]:

Bissell Homecare, Inc.
2345 Walker Ave, NW
Grand Rapids, MI 49544

Batch/Lot: *(Note to Reviewer: The lot or batch number may also be stamped or imprinted directly on the packaging.)*

[(Net Contents: _____) [#_ [pre-measured packets [sachets], ____ fl. oz. each
(Total Net Contents _____)

(Note to Reviewer: (parenthetical text) is optional; [bracketed text] is informational or an interchangeable option is presented.)

Optional Container Graphics: [Note to Reviewer: Graphics presented below are representative and may vary slightly in printed labeling due to different photographic, color or illustrated design, but no change to the intent is to occur.]

Recycling:

PLEASE SEPARATE AND RECYCLE



US ONLY



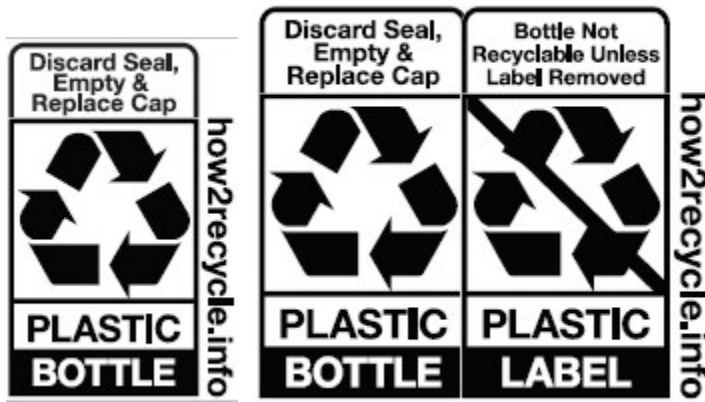
Recycleable
Packaging



Post-Consumer
Recycled Plastic



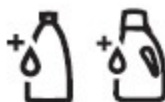
Recycle



Preparation/Product Image:



Formula Bottle



Add Formula



Pack-in
Formula Bottle



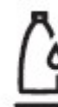
Add Formula



8oz Pack-in
Formula Bottle

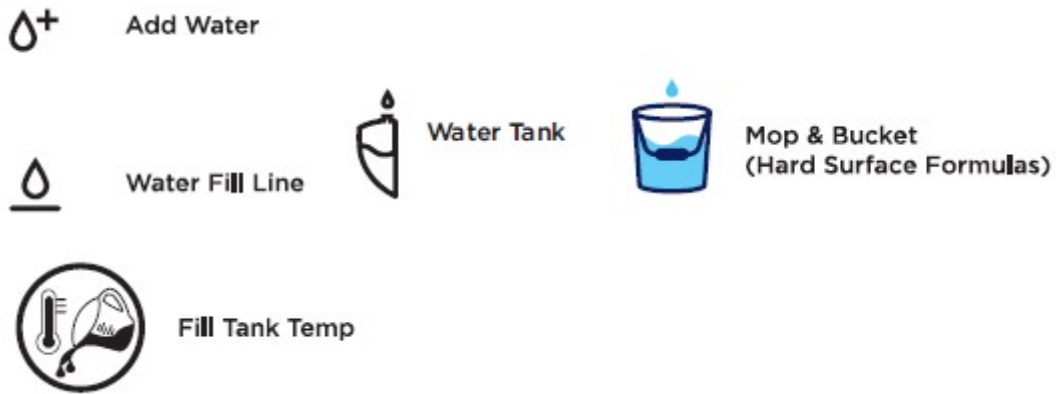


Add Formula
(Antibacterial)



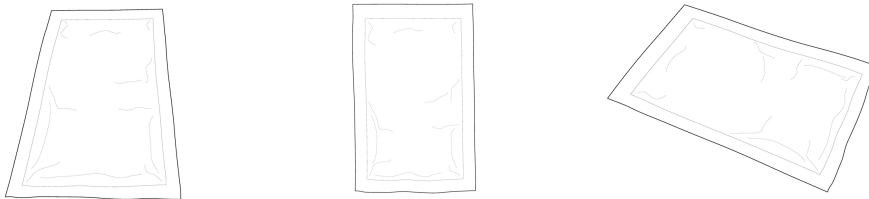
Formula Fill Line

(Note to Reviewer: (parenthetical text) is optional; [bracketed text] is informational or an interchangeable option is presented.)

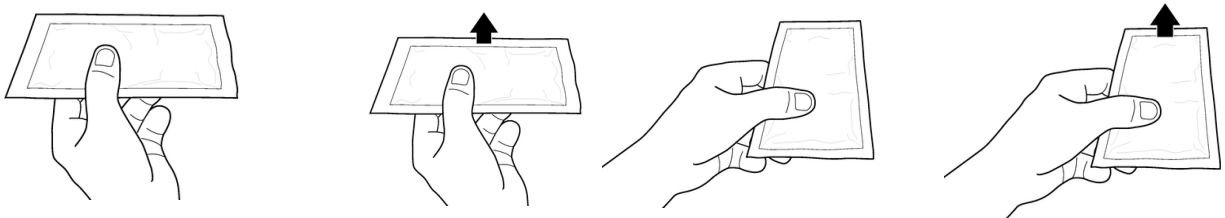


Pre-Measured Packets: The depictions may vary slightly in design but not intent.

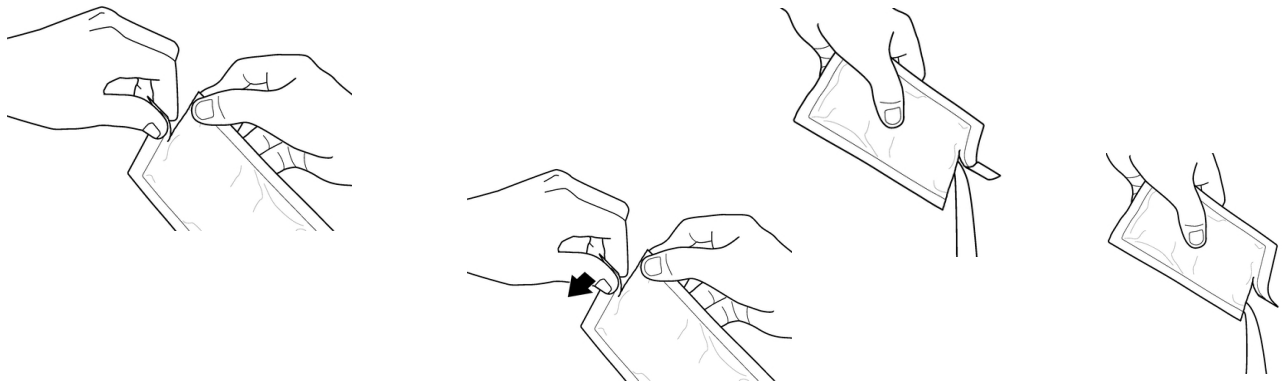
[Packet image]



[Insert pre-measured packet into machine:]



[Tear open pre-measured packet, pour]



(Note to Reviewer: (parenthetical text) is optional; [bracketed text] is informational or an interchangeable option is presented.)

Pre-clean/wet floor:



Miscellaneous brand logos:



(Note to Reviewer: (parenthetical text) is optional; [bracketed text] is informational or an interchangeable option is presented.)

Area of Use:

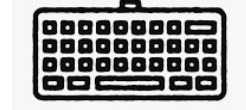
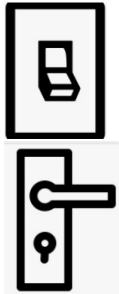
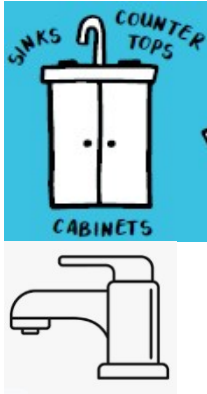


Floor Surface Materials - images will be clarified on label with any required indication of hard, nonporous or food use where the text appears



Use Items:

(Note to Reviewer: (parenthetical text) is optional; [bracketed text] is informational or an interchangeable option is presented.)



Soils:



Coffee



Pet Hair



Jelly



Pet Urine & Vomit
and/or blood stains



Fruit Juice



Pet Urine &
Skunk Odors



Cat



Cola



Pet



Dog

Pet images must be used in conjunction with the identification of soils.

(Note to Reviewer: (parenthetical text) is optional; [bracketed text] is informational or an interchangeable option is presented.)



Allergens:



BISSELL Pet Foundation – Charitable indication on label which does not imply use of the product on animals but that charitable donations are made by BISSELL to the identified foundation:

(Note to Reviewer: (parenthetical text) is optional; [bracketed text] is informational or an interchangeable option is presented.)



Every Purchase **Saves Pets™**

BISSELLsavespets.com



Optional Fragrance Graphic if fragrance is described:

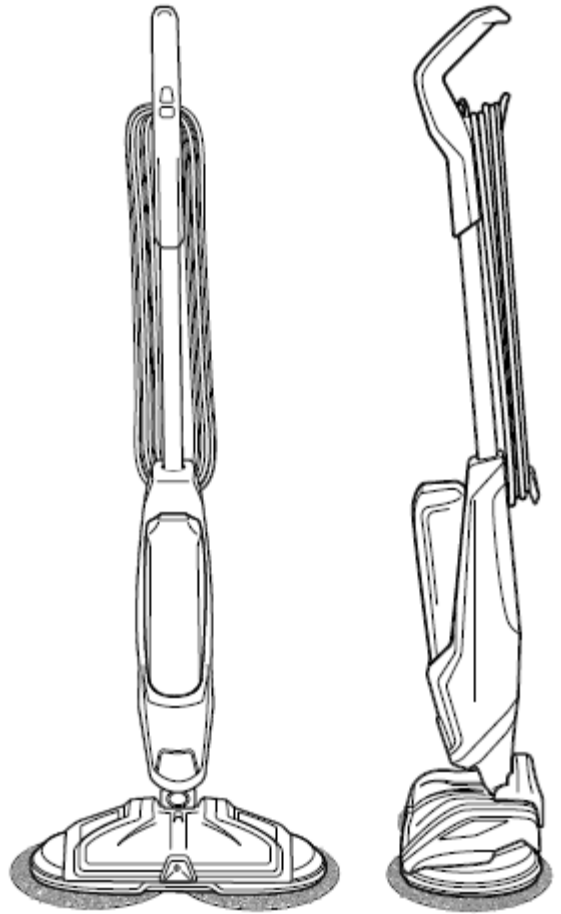




SPINWAVE™

USER GUIDE

[INSERT SERIES #] SERIES



IMPORTANT SAFETY INSTRUCTIONS

READ ALL INSTRUCTIONS BEFORE USING YOUR SPINWAVE™.

When using an electrical appliance, basic precautions should be observed, including the following:

WARNING

TO REDUCE THE RISK OF FIRE, ELECTRIC SHOCK, OR INJURY:

[Note to Reviewer: Electrical Safety Statements will be inserted here - INCLUDING:]

»Use only BISSELL cleaning products intended for use with this appliance to prevent internal component damage. See the Cleaning Fluid section of this guide.]

SAVE THESE INSTRUCTIONS FOR FUTURE USE

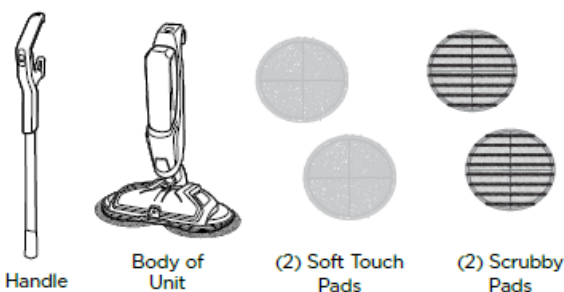
This model is for household use only. Commercial use of this unit voids the manufacturer's warranty.

Thanks for buying a BISSELL SpinWave™

We love to clean and we're excited to share one of our innovative products with you. We want to make sure your hard surface floor cleaner works as well in two years as it does today, so this guide has tips on using (pages #-#), maintaining (pages #-#), and if there is a problem, troubleshooting (page #).

What's In The Box?

[Note to Reviewer: examples of Graphics and Naming of Items may vary slightly.]



8 fl. oz. BISSELL

Multi-Surface Formula



8 fl. oz. trial size of [Insert Name of Hard Surface Sanitizer, EPA Reg. No. 6297-2]

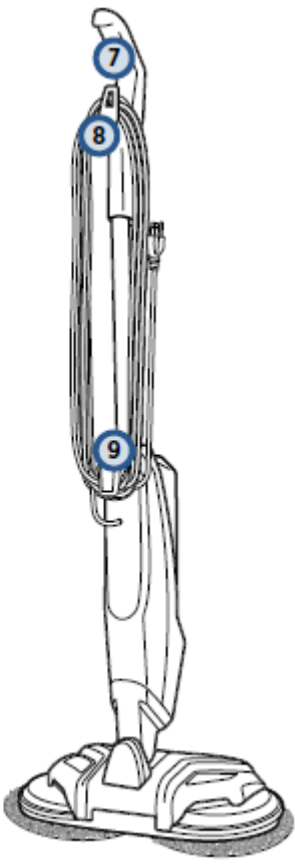
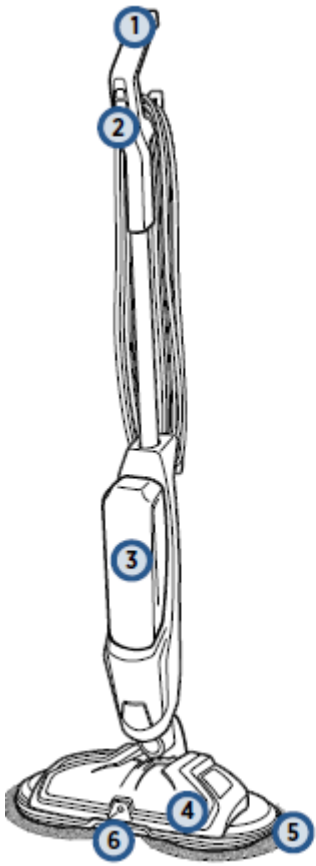
NOTE: Standard accessories may vary by model. To identify what should be included with your purchase, please refer to the “Carton Contents” list located on the carton top flap.

Safety Instructions.....[Page #]
Product View.....[Page #]
Assembly.....[Page #]
Operations.....[Page #]
Maintenance & Care.....[Page #]

Troubleshooting.....[Page #]
Warranty.....[Page #]
Service.....[Page #]
Product Registration.....[Page #]
Consumer Care.....[Page #]

Getting to Know Your SpinWave™

[Note to Reviewer: The below or similar graphics will be used. Names of parts and placement of numbers could vary.]



- 1 [insert part name]
- 2 [insert part name]
- 3 [insert part name]
- 4 [insert part name]
- 5 [insert part name]

- 6 [insert part name]
- 7 [insert part name]
- 8 [insert part name]
- 9 [insert part name]

SPINWAVE™ FORMULAS		
[Insert Graphic Image of Bottle]	[Insert Graphic Image of Bottle]	[Insert Graphic Image of Bottle]
Multi-Surface Formula	Wood Floor Formula	Hard Surface Sanitizer
Great for cleaning ALL sealed hard floors	Restore your wood floors' natural shine	Clean and Sanitize your floor in one easy step

Attaching Mop Pads

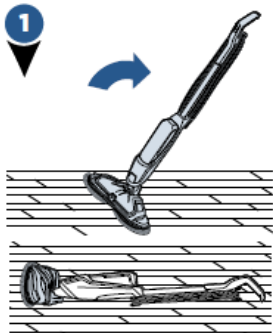
[Note to Reviewer: Below is an example of text and graphics. This may vary slightly.]

Your BISSELL SpinWave™ may have come with two different mop pads:



(2) Soft Touch Pads (2) Scrubby Pads

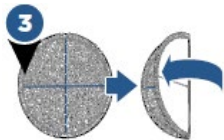
The Soft Touch Pad is best for everyday use on delicate flooring like sealed hardwoods and laminate. The Scrubby Pad is best used to power through tough, sticky messes.



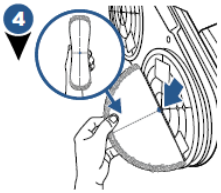
Your SpinWave™ may have come with mop pads attached. If not, to attach mop pads, carefully lay machine down on the floor.



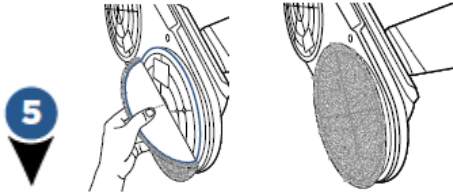
The back of the mop pad has a small dot in the center of the pad.



First, fold the pad in half, making sure the cloth material is inside the fold.



Then, with the mop pad folded, line up the small dot in the center of the pad with the middle screw on the bottom of the foot.

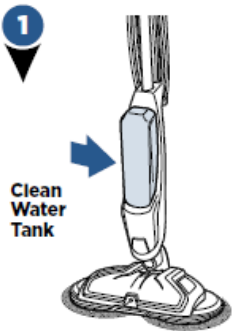


Lastly, line up the edge of the mop pad with the inner ring on the foot, attaching the mop pad to the hook and loop material on the bottom of the foot.

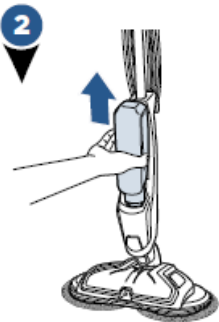
NOTE: These next steps are to help you apply the mop pads more accurately onto the machine.

Filling Your Clean Water Tank

[Note to Reviewer: The below or similar graphics depicting the steps may be used with the text below.]



The clean water tank is located on the front of the machine.



Lift the clean water tank straight up to remove from the machine.

3



Unscrew the cap from the clean water tank.

The clean water tank has two measuring volumes depending on the amount of space you would like to clean.

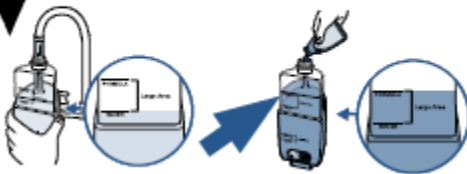
[Note to Reviewer: The below table does not need to appear in the printed manual but is a reference for inputting the appropriate product and water volumes in the use directions steps indicated below.]

FORMULA TANK - DILUTION PREPARATION INSTRUCTIONS

[MODEL NAME]	(FILL LINE)	Amount of Product (fl. oz.)	Amount of (Warm) Tap Water
[Insert CrossWave Model name(s)]	(Large Area (700 sq ft)) (Small Area (<350 sq ft)) (NA)	0.5	3 fl. oz.
		1	6 fl. oz.
		1.5	9 fl. oz.
		2	12 fl. oz.
		2.5	15 fl. oz.
		3	18 fl. oz.
		3.5	21 fl. oz.
		4	24 fl. oz.
		4.5	27 fl. oz.
		5	30 fl. oz.

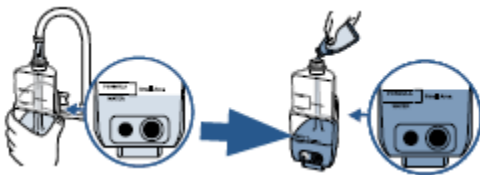
[Step 4 for machines with a small and large fill line]

4



For **large area cleaning** (up to 700 sq ft)

- a. Fill formula tank with (warm) tap water to the second water fill line [insert water volume from table above].
- b. Then add BISSELL® SpinWave™ formula to the second formula fill line [insert formula volume from table above].



For **small area cleaning** (<350 sq ft)

- a. Fill formula tank with (warm) tap water to the first water fill line [insert water volume from table above].
- b. Then add BISSELL® SpinWave™ formula to the first formula fill line [insert formula volume from table above].

[Step 4 for machines with only one fill line:]

- a. Fill machine formula tank with (warm) water to Water fill line (insert formula ounces as indicated in Product Dilution Instructions table) .
- b. Then add formula to Formula fill line (insert water ounces as indicated in Product Dilution Instructions table).

[Step 4 if a pre-measured packet inserted into the machine. Graphics are optional:]

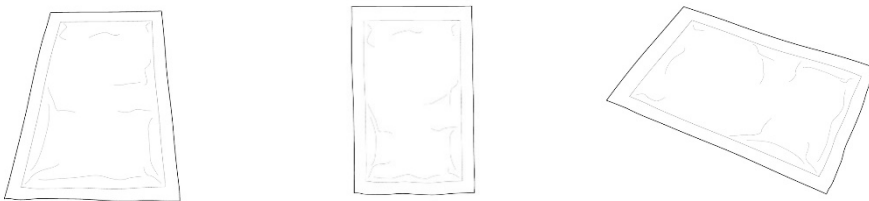
[For Use with pre-measured sachets/packets in machine with an integrated dispenser in formula-only tank]

- a. Fill the Clean Water Tank with (warm) water to the Fill line indicated on the tank – [insert water volume from table above]. (Use warm (140F/60C max) water.)
- b. Lift Formula lid and place a [insert formula ounces as indicated in Product Dilution instructions table] (BISSELL) [insert product name] [sachet] [packet] [pouch] in holder.

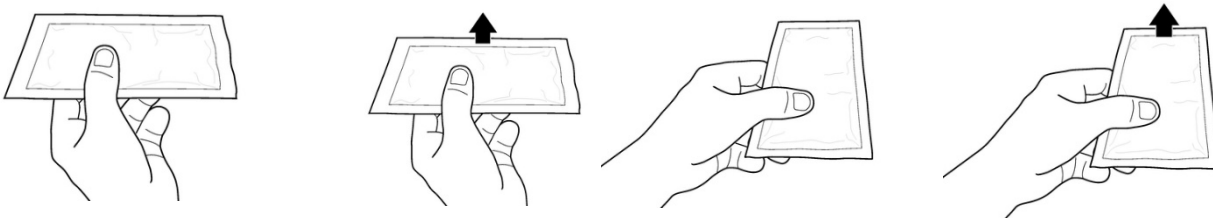
[For Use with pre-measured sachets/packets in machine withOUT an integrated dispenser in formula-only tank]

- a. Fill the Clean Water Tank with (warm) water to the Fill line indicated on the tank – [insert water volume from table above]. (Use warm (140F/60C max) water.)
- b. Tear open [insert formula ounces as indicated in Product Dilution instructions table] (BISSELL) [insert product name] [sachet] [packet] [pouch] at indicated notch and pour entire contents into tank.

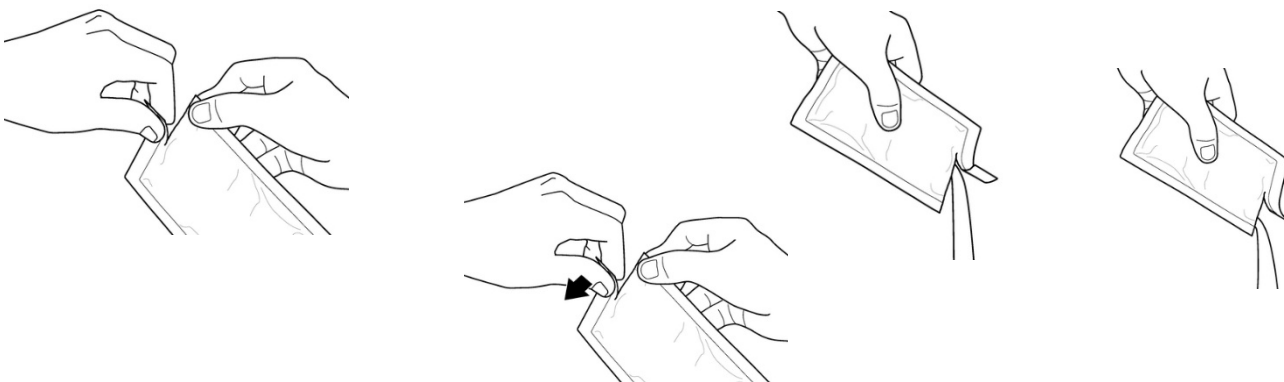
Packet image]



[Insert pre-measured packet into machine:]

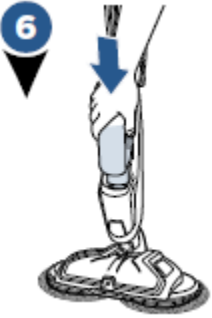


[Tear open pre-measured packet, pour]





Screw the cap tightly back onto the clean water tank until completely closed.



Slide the clean water tank back into place until you hear a click.

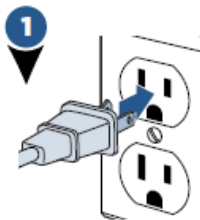
[A few notes about filling the clean water tank:

- Fill with warm (140°F/60°C MAX) tap water and add the appropriate BISSELL solution. **DO NOT USE BOILING WATER. DO NOT HEAT WATER OR TANK IN MICROWAVE.]**

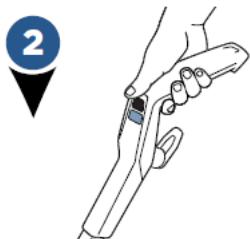
Cleaning Your Sealed Hard Floors

ATTENTION: This machine is designed to be used only on sealed hard floors and should not be used on carpet or rugs. For best cleaning results, sweep or vacuum the floor surface prior to using the BISSELL SpinWave™. This is to avoid scratching or damaging floors from sharp debris.

[Note to Reviewer: The below or similar graphics depicting the steps may be used with the steps below.]



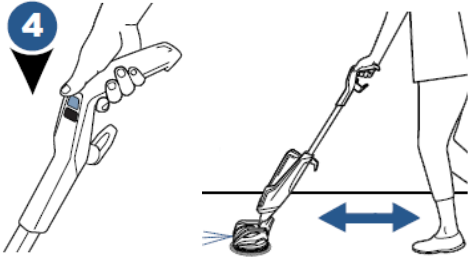
Plug machine into a properly grounded outlet.



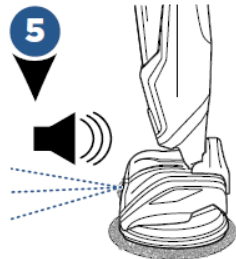
Press the ON/OFF button to start cleaning your sealed hard floors.



Recline the body of the machine backward to start the rotating mop pads.



To clean, push the SPRAY button to dispense solution.



Solution will spray out of the nozzle on the front of the foot. You should hear a soft buzzing noise each time you press the SPRAY button to indicate solution being dispensed.

To clean: Push the SPRAY button to dispense solution. **To Sanitize:** Remove visible soil. Using the Hard Surface Sanitizer (or insert brand name), push the SPRAY button to dispense solution. Allow to remain visibly wet for 5 minutes.

NOTE: Hard Surface Sanitizer formula is for use on hard, sealed floors only. Read sanitizer container label fully prior to use.



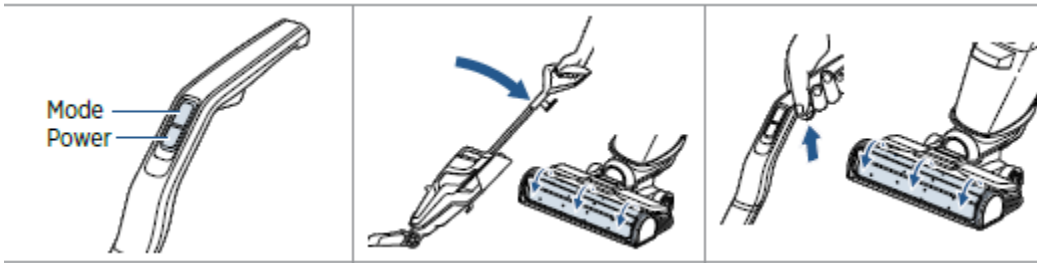
For more difficult and stuck on messes, spray solution directly on mess and line up one of the mop pads parallel to the mess. Move mop pad over mess and slowly move machine back and forth to clean, continuing to spray solution as needed.

TIP: For optimum cleaning, perform overlapping cleaning strokes while dispensing cleaning solution. Care should be taken to not over wet the floor surface, especially when cleaning wood and other delicate floor surfaces.

TIP: When cleaning near baseboards, edges, or furniture you may feel a slight pull from the unit due to bouncing off the surface.

NOTE: When finished cleaning, make sure to push the OFF button before standing the machine upright as the mop pads will continue to spin until the machine is turned OFF.

[ALTERNATE CLEANING YOUR FLOORS SECTION]

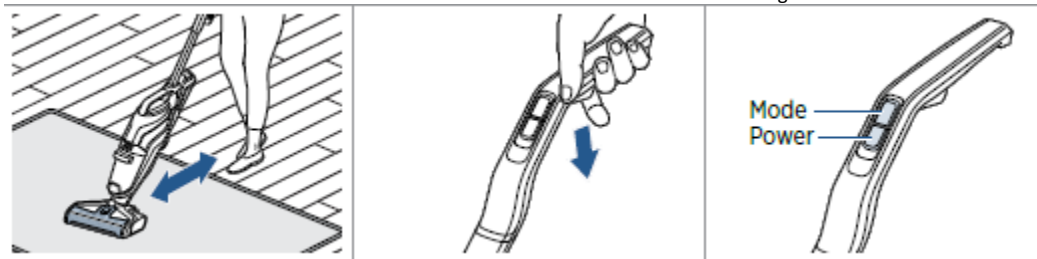


1. Press the power button ON. Press the mode button to switch between modes.

2. Recline the machine to start the brush roll spinning. When the machine is standing upright, brush roll will not spin.

3. Before each use, hold the solution spray trigger for 10 seconds to prime the system with cleaning solution.

Note: LED lights are always illuminated, but turn blue when holding the trigger. Bubbles will appear in the brush roll window when the solution is flowing.



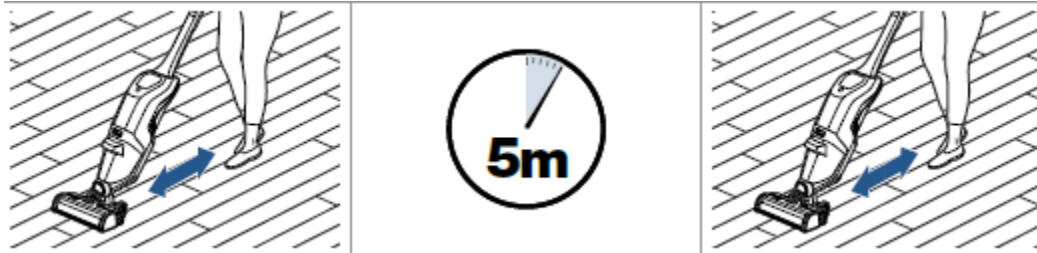
4. To clean, hold the solution spray trigger to apply solution on forward pass. For heavier soils, press the steam button if available.

5. Release the trigger and make a backward pass without dispensing solution.

6. Turn OFF the machine by pressing the power button.

Sanitizing Hard Floors

Please read the Hard Floor Sanitize formula label prior to each use. Use on hard nonporous floors only.



1. Follow cleaning instructions above to remove visible soils. To Sanitize: Hold trigger down to apply solution to floor.

2. Allow formula to remain visibly wet on the floor for five minutes.

3. With the spray trigger released, make forward and backward passes to extract solution.

Cleaning Your SpinWave™

WARNING

To reduce the risk of fire, electric shock or injury, turn power OFF and disconnect plug from electrical outlet before performing maintenance or troubleshooting.

WARNING

Do not set the machine on carpet, rug, or other fabric surface when mop pad is removed as hook and loop material on foot may damage them.

WARNING

Do not store machine on wet mop pads as they may damage wood or other delicate floors.

[Note to Reviewer: Instructions and graphics for turning off, removing maps, washing them and wrapping cord will be displayed here.]

NOTE: Any solution remaining in the clean water tank should be emptied prior to machine storage.

NOTE: Store cleaner in a protected, dry area. Since this product uses water, it must not be stored where there is danger of freezing. Freezing may damage internal components and void the warranty.

Troubleshooting

Problem	Possible causes	Remedies
[Title Display]	[Listed causes]	[Suggested fix]

Warranty

[Note to Reviewer: Warranty text displayed here may vary slightly.]

This warranty gives you specific legal rights, and you may also have other rights which may vary from state to state. If you need additional instruction regarding this warranty or have questions regarding what it may cover, please contact BISSELL® Consumer Care by E-mail or telephone as described below.

It may be necessary to obtain some of your personal information, such as a mailing address, to fulfill terms of this warranty. Any personal data will be handled pursuant to BISSELL's Privacy Policy, which can be found online at www.BISSELL.com/privacy-policy.

Limited Two-Year Warranty

Subject to the ***Exceptions and Exclusions from the Terms of the Limited Warranty**, upon receipt of the product BISSELL will repair or replace (with new, refurbished, lightly used, or remanufactured components or products), at BISSELL's option, free of charge from the date of purchase by the original purchaser, for two years, any defective or malfunctioning part.

See information below on "If your BISSELL product should require service".

This warranty applies to product used for personal, and not commercial or rental, service. This warranty does not apply to fans or routine maintenance components such as filters, belts or brushes. Damage or malfunction caused by negligence, abuse, neglect, unauthorized repair, or any other use not in accordance with the user guide is not covered. This warranty will only be valid if the product is used in the same country in which it was sold.

BISSELL is not liable for incidental or consequential damages of any nature associated with the use of this product. BISSELL's liability will not exceed the purchase price of the product.

Some states do not allow the exclusion or limitation of incidental or consequential damages, so the above limitation or exclusion may not apply to you.

***Exceptions and Exclusions from the Terms of the Limited Warranty**

This warranty is exclusive and in lieu of any other warranties, either oral or written. Any implied warranties, which may arise by operation of law, including the implied warranties of merchantability and fitness for a particular purpose, are limited to the two-year duration from the date of purchase as described above.

Some states do not allow limitations on how long an implied warranty lasts, so the above limitation may not apply to you.

NOTE: Please keep your original sales receipt. It provides proof of date of purchase in the event of a warranty claim.

Service

[Note to Reviewer: Machine Service contact information will be provided here.]

Register your product today!

[Note to Reviewer: Product registration, rewards, feedback request etc. will be inserted here.]

Manufactured [by] [for]:
Bissell Homecare, Inc.
2345 Walker Ave, NW
Grand Rapids, MI 49544

For Consumer Care contact:
BISSELL Homecare, Inc.
P.O. Box 1888
Grand Rapids, MI 49501

Manufactured by
[BISSELL brand
Questions or comments 1.800.237.7691 ©(year)
BISSELL Homecare Inc., Grand Rapids, MI 49544
USA
www.bissell.com]

©(year) BISSELL Homecare Inc.
BISSELL International Trading Company BV
Stadhouderskade 55,
1072 AB Amsterdam
The Netherlands

[Questions?] [Comments?] [Call XXX-XXX-XXXX]



SERIES [INSERT SERIES #]

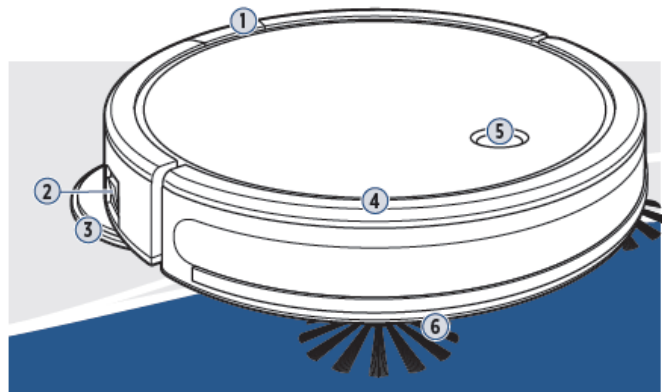
[Insert Brand Name][CrossWave] Robot

What’s in the Box.....[insert page #]
 Docking and Charging Your Robot..... [insert page #]
 Connecting to the App..... [insert page #]
 Automatic Cleaning.....[insert page #]
 Mop Mode.....[insert page #]
 Dry Vacuum Mode.....[insert page #]
 Cleaning the Brush Roll.....[insert page #]
 Removing and Cleaning the Caster Wheel.....[insert page #]
 Replacing the Edge Cleaning Brushes..... [insert page #]
 Storing Your Robot.....[insert page #]
 Cleaning the Sensors.....[insert page #]
 Replacing the Battery.....[insert page #]
 Troubleshooting.....[insert page #]
 Warranty..... [insert page #]

[Note to Reviewer: examples of Graphics and Naming of Items may vary]

Product Overview

- 1. Tank Release Button
- 2. Power Switch
- 3. Mop Pads
- 4. Bumper
- 5. Start/Pause Button
- 6. Edge Cleaning Brushes



Go online for a comprehensive walkthrough of your (new) purchase!

This guide has everything you need to get ready for your first use, including setting up, using and maintaining your machine, but online you’ll find additional resources like tips and troubleshooting, videos, product registration, parts and more.

Go to support.BISSELL.com.



IMPORTANT SAFETY INSTRUCTIONS

READ ALL INSTRUCTIONS BEFORE [USE] [USING YOUR] ([Insert Brand Name])[CrossWave] ROBOT).

When using an electrical appliance, basic precautions should be observed, including the following:

() () () **WARNING**

TO REDUCE THE RISK OF FIRE, ELECTRIC SHOCK, OR INJURY:

[Note to Reviewer: Electrical Safety Statements will be inserted here - INCLUDING:]

- Use only BISSELL cleaning products intended for use with this appliance to prevent internal component damage. See the “Mop Mode: Choosing Your Formula” section of this manual.

SAVE THESE INSTRUCTIONS (FOR FUTURE USE)

(THIS MODEL IS FOR HOUSEHOLD USE ONLY.)

IMPORTANT INFORMATION

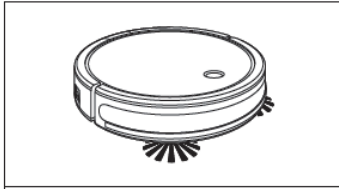
- Do not turn your appliance ON until you are familiar with all instructions and operating procedures.
- This product contains a wireless device. Refer to FCC/IC Notice Document for regulatory information.

[Note to Reviewer: A statement regarding the Software Licensing may be inserted here.]

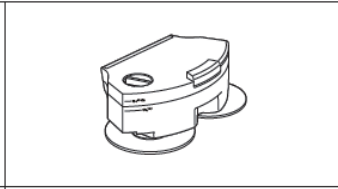
What’s In The Box?

(Standard accessories may vary by model.)

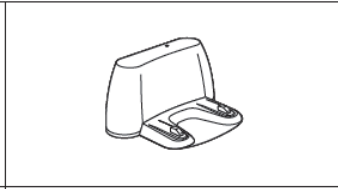
[Note to Reviewer: examples of Graphics and Naming of Items may vary slightly and some may be omitted]



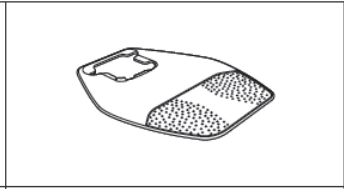
[Insert Brand Name]
Robot with Dirt Bin



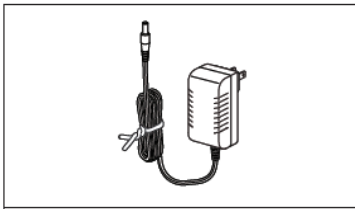
Mop Tank with Mop
Pads



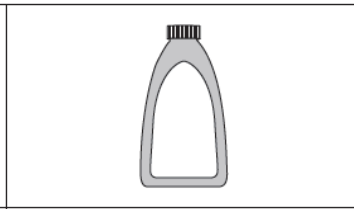
Docking Station



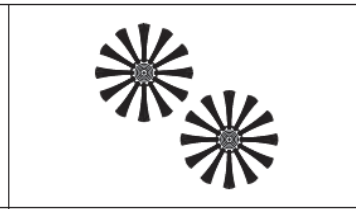
Docking Tray



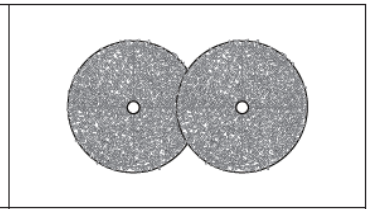
Power Adapter



Trial-Size
[Insert name of Cleaner
and/or Hard Surface Sanitizer]



(Edge Cleaning Brushes)
(select models)



(2) Extra Mop Pads

Docking and Charging Your Robot

Note: The Docking Station & Docking Tray must be installed on a hard surface. The robot's soft surface sensors prevent it from cleaning carpets and area rugs in mop mode.

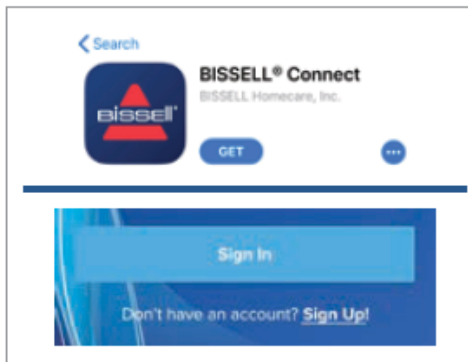
[Note to Reviewer: Graphics and instructions for plugging in and charging the Robot will be provided here, containing no FIFRA text.]

Connecting to the App

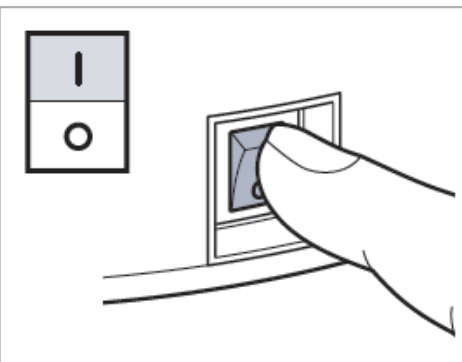
(For more help, visit support.BISSELL.com.)

Downloading the BISSELL Connect App (App) means you can change your robot's cleaning mode, start, pause, or stop your robot, schedule cleanings, view notifications, track your cleaning history, and troubleshoot all from the palm of your hand.

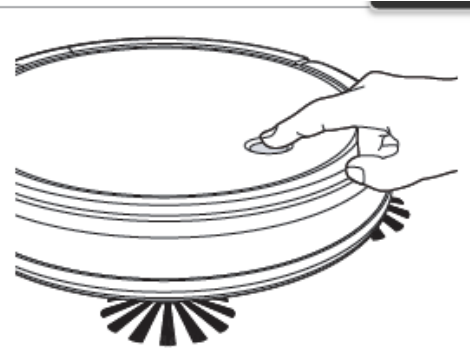
[Note to Reviewer: examples of Graphics and Naming of Items may vary slightly and some may be omitted]



1. In the App (or Google Play) Store search "BISSELL Connect" and download. Once downloaded, open the app and sign in or create a new login.



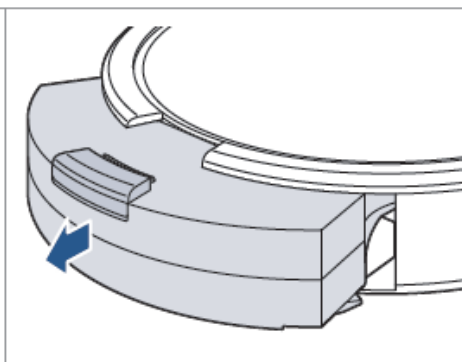
2. Make sure you're near your WiFi router before turning the robot ON (I).



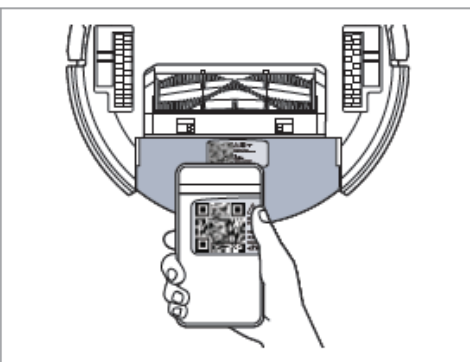
3. To put the robot in pairing mode, press and hold the Start/Pause Button for 5 seconds until you hear a single beep.



4. From the app, select "Have a BISSELL Connected Product? Connect it now." Then choose your product from the menu.



5. Remove the Dirt Bin and turn the robot over to access the setup QR code.



6. Scan the QR code, follow the instructions in the app to pair.

Automatic Cleaning

Download the BISSELL Connect App to set up automatic features.

You can designate a day and time for your robot to run automatically using the BISSELL Connect App. Once the robot is connected to the app, go to the Schedule tab and follow the on-screen prompts.





Mop Mode (continued)

More of a video person? Open up the BISSELL Connect App for how-to videos.

Choosing Your Formula

Keep plenty of BISSELL® formulas on hand so you can clean whenever it fits your schedule. Always use genuine BISSELL formulas in your machine. Other formulas may harm the machine and void the warranty. Do not use Hard Floor Sanitize Formula on area rugs or carpet.

[Note: Cleaning product names and descriptions are subject to change or select ones may be omitted.]

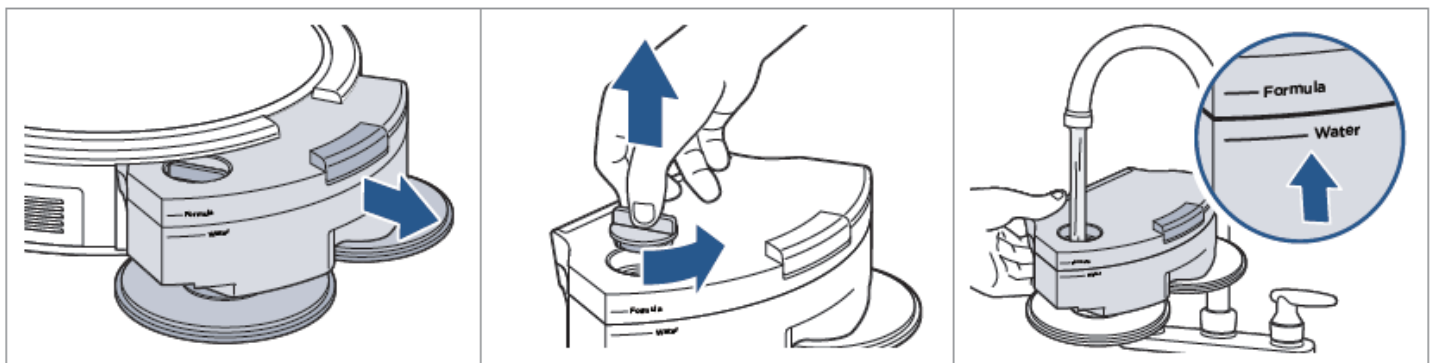
			
Multi-Surface Formula Great for cleaning all Sealed hard floors.	Wood Floor Formula Restores your wood floor's natural shine.	Pet Multi-Surface with Febreze Formula Removes pet odors to clean and refresh.	Hard Floor Sanitize ([INSERT BRAND NAME]) Cleans and sanitizes, Eliminates 99.9% of bacteria.*

(Certain trademarks used under license from [insert company name] or its affiliates.)

*Kills 99.9% of *Enterobacter aerogenes* (ATCC 13408) and *Staphylococcus aureus* (ATCC 6538)

Filling Your Mop Tank [Note to Reviewer: Graphics may vary slightly.]

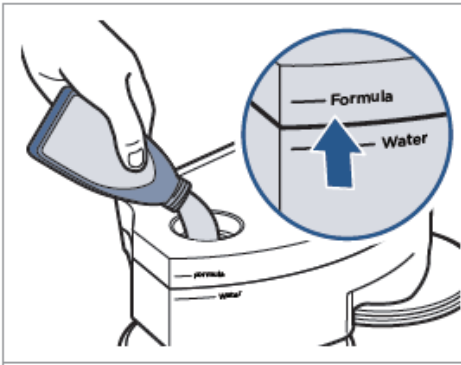
In Mop Mode, your BISSELL® [insert brand name] Robot will clean using dual rear rotating mop pads combined with a BISSELL formula to clean your home's hard floors. While mopping, your [insert brand name] Robot will also sweep and collect a limited amount of dry debris for a complete cleaning experience.



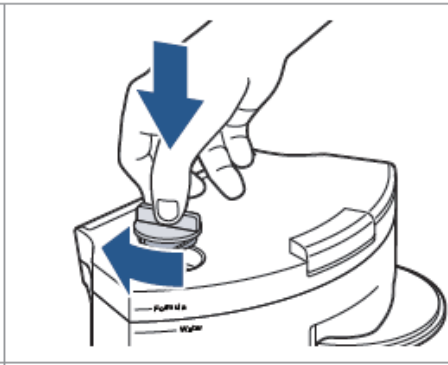
1. Turn the Power Switch OFF. Press the button on top of the tank and pull to remove.

2. Twist to unlock the tank cap and pull up to remove.

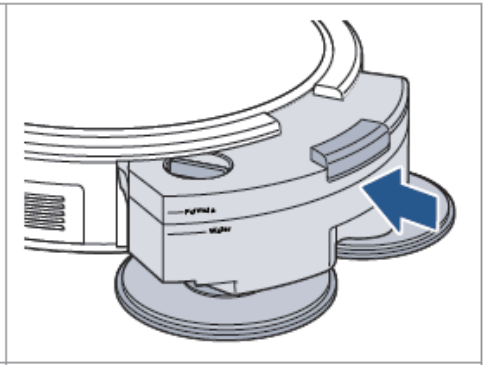
3. Fill the tank with water to the "Water" fill line.



4. Fill with a BISSELL cleaning formula to the “Formula” fill line.



5. Twist the Mop Tank cap back into place.



6. Reinstall the tank.
Note: Hold the tank level to avoid leaking.

⚠ WARNING To reduce the risk of fire due to internal component damage use only BISSELL cleaning products intended for use with this appliance.

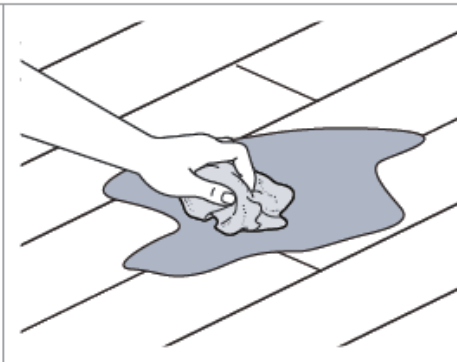
Sanitizing with Spot Mode [Note to Reviewer: Graphics may vary slightly.]

Spot mode can be used with [insert product name] to sanitize floors after tough messes like a pet accident. Spot mode also works to give certain areas extra cleaning attention when used with [insert hard floor formula name] [Hard Floor formulas]. Access Spot mode in the BISSELL Connect App.

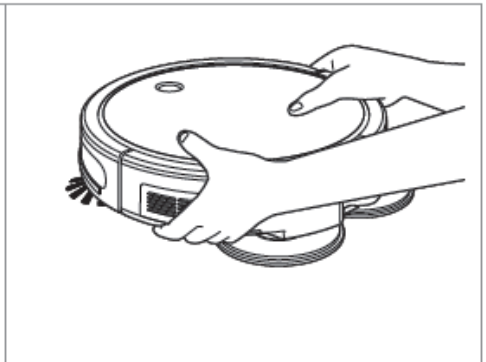
Note: You can sanitize multiple areas around your home with a single tank.



1. Add [insert product name] Formula following the steps on page [insert page # for Mop mode tank prep] [Note to Reviewer: one of the two options below will be used.] [Using the water and product quantities as described in the table below.] [using [insert ounces of water from table below] fl. oz. water and [insert ounces of product from table below] fl. oz. formula.]

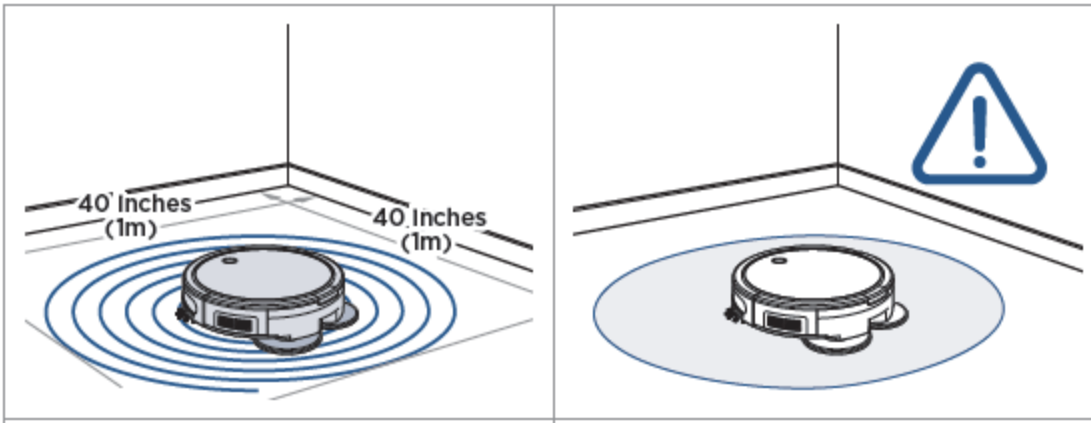


2. Wipe up the mess with (disposable) (paper) towel.



3. Place the robot in the center of the area you want to clean and select “Spot” mode in the BISSELL Connect App.

[Note to Reviewer: If product is provided in a pre-measured pouch:] Tear open [insert formula ounces as indicated in Product Dilution instructions table] (BISSELL) [insert product name] [sachet] [packet] [pouch] at indicated notch and pour entire contents into tank.



4. The robot will clean in a spiral pattern, covering an area approximately 40" x 40" or 1m x 1m for 5 minutes. The robot will beep to let you know it's finished.

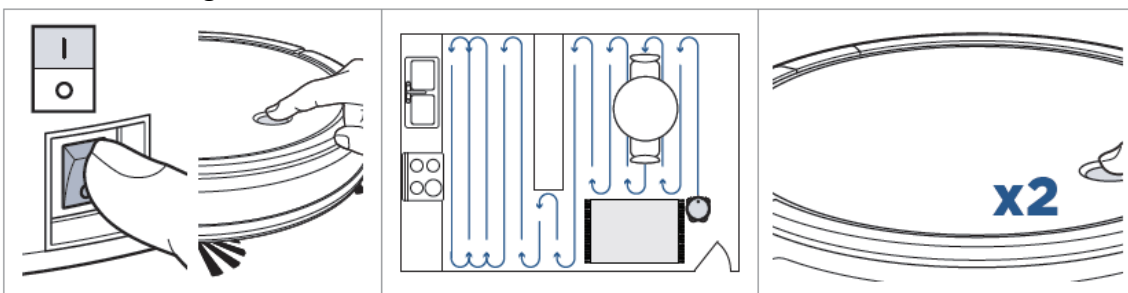
5. Use caution when removing robot as the floor may be slippery. Allow to remain visibly wet for 5 minutes.

[Note to Reviewer: The below table does not need to appear in the printed manual but is a reference for inputting the appropriate product and water volumes in the use directions steps indicated below. Any equivalent dilution of 1 part product to 6 parts water may be inserted.]

FORMULA TANK - DILUTION PREPARATION INSTRUCTIONS

[MODEL NAME]	Amount of Product (fl. oz.)	Amount of (Warm) Tap Water
[Insert Model name(s)]	0.5	3 fl. oz.
	1	6 fl. oz.
	1.5	9 fl. oz.
	2	12 fl. oz.
	2.5	15 fl. oz.
	3	18 fl. oz.
	3.5	21 fl. oz.
	4	24 fl. oz.
	4.5	27 fl. oz.
	5	30 fl. oz.

Manual Cleaning



1. Turn the robot ON. Press The Start/Pause Button to start cleaning.

2. The robot will clean hard surfaces and avoid most soft Surfaces, such as area rugs and carpet.

3. Return the robot to the dock. Press the Start/Pause Button twice. The light ring will flash White as it finds its way back.

Note: The robot will stop if water is low. To resume cleaning, refill Mop Tank and push the Start/Pause Button.

Maintaining the Mop Pads and Debris Trap

[Note to Reviewer: Instructions and graphics will be displayed here.]

Dry Vacuum Mode

(For more help, visit support.BISSELL.com.)

Maintaining the Dirt Bin

[Note to Reviewer: Instructions and graphics will be displayed here. This will not include any sanitizer use or reference to FIFRA regulated items.]

Cleaning the Brush Roll

(Check out the BISSELL Connect App for tips and videos on Brush Roll Maintenance.)

[Note to Reviewer: Instructions and graphics will be displayed here. This will not include any sanitizer use or reference to FIFRA regulated items.]

Removing and Cleaning the Caster Wheel

(For more help with maintaining your robot, open up the BISSELL Connect App.)

[Note to Reviewer: Instructions and graphics will be displayed here. This will not include any sanitizer use or reference to FIFRA regulated items.]

Replacing the Edge Cleaning Brushes

(Find replacement brushes on BISSELL.com.)

[Note to Reviewer: Instructions and graphics will be displayed here. This will not include any sanitizer use or reference to FIFRA regulated items.]

Storing Your Robot

Store your robotic vacuum cleaner safely indoors where it is unlikely to be damaged. Store with clean, dry mop pads. Any solution remaining in the Mop Tank should be emptied prior to storage.

Cleaning the Sensors

[Note to Reviewer: Instructions and graphics will be displayed here. This will not include any sanitizer use or reference to FIFRA regulated items.]

Replacing the Battery

[Note to Reviewer: Instructions and graphics will be displayed here. This will not include any sanitizer use or reference to FIFRA regulated items.]

Troubleshooting

For a comprehensive walkthrough of your product and support tips visit support.BISSELL.com.

Error	Button Light State	Sound	Remedies
[Title Display]	[Listed light flashing description]	[# Beeps]	[Suggested fix]

Warranty

[Note to Reviewer: Warranty text displayed here may vary slightly.]

This warranty gives you specific legal rights, and you may also have other rights which may vary from state to state. If you need additional instruction regarding this warranty or have questions regarding what it may cover, please contact BISSELL® Consumer Care by E-mail or telephone as described below.

It may be necessary to obtain some of your personal information, such as a mailing address, to fulfill terms of this warranty. Any personal data will be handled pursuant to BISSELL's Privacy Policy, which can be found online at www.BISSELL.com/privacy-policy.

Limited Two-Year Warranty

Subject to the ***Exceptions and Exclusions from the Terms of the Limited Warranty**, upon receipt of the product BISSELL will repair or replace (with new, refurbished, lightly used, or remanufactured components or products), at BISSELL's option, free of charge from the date of purchase by the original purchaser, for two years, any defective or malfunctioning part.

See information below on "If your BISSELL product should require service".

This warranty applies to product used for personal, and not commercial or rental, service. This warranty does not apply to fans or routine maintenance components

such as filters, belts or brushes. Damage or malfunction caused by negligence, abuse, neglect, unauthorized repair, or any other use not in accordance with the user guide is not covered. This warranty will only be valid if the product is used in the same country in which it was sold.

BISSELL is not liable for incidental or consequential damages of any nature associated with the use of this product. BISSELL's liability will not exceed the purchase price of the product.

Some states do not allow the exclusion or limitation of incidental or consequential damages, so the above limitation or exclusion may not apply to you.

*Exceptions and Exclusions from the Terms of the Limited Warranty

This warranty is exclusive and in lieu of any other warranties, either oral or written. Any implied warranties, which may arise by operation of law, including the implied warranties of merchantability and fitness for a particular purpose, are limited to the two-year duration from the date of purchase as described above.

Some states do not allow limitations on how long an implied warranty lasts, so the above limitation may not apply to you.

NOTE: Please keep your original sales receipt. It provides proof of date of purchase in the event of a warranty claim.



We're Waggin' Our Tails!

BISSELL® proudly supports BISSELL Pet Foundation® and its mission to help save homeless pets. When you buy a BISSELL product, you help save pets, too. We're proud to design products that help make pet messes, odors and pet homelessness disappear.
Visit [BISSELLsavespets.com](https://www.bissellsavespets.com) to learn more.

(But wait, there's more!)

Join us online for a complete guide to your new product, including troubleshooting, product registration, parts, and more.

Go to [support.BISSELL.com](https://support.bissell.com)



Manufactured [by] [for]:
Bissell Homecare, Inc.
2345 Walker Ave, NW
Grand Rapids, MI 49544

Manufactured by
[BISSELL brand
Questions or comments 1.800.237.7691 ©(year)
BISSELL Homecare Inc., Grand Rapids, MI 49544
USA
www.bissell.com]

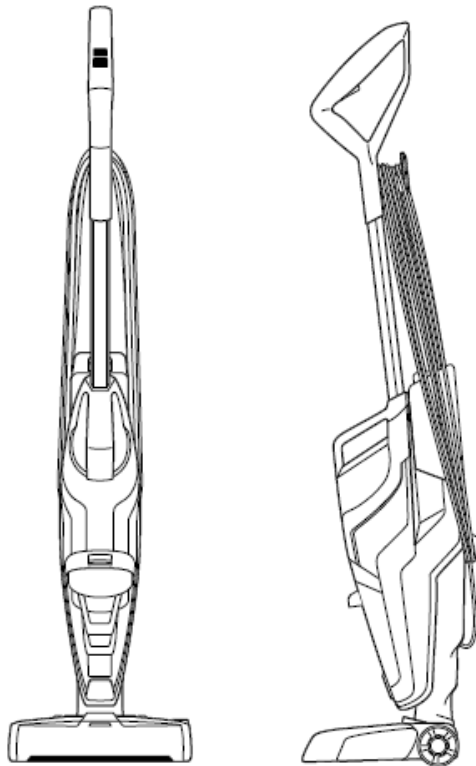
(©(year) BISSELL Homecare Inc.
BISSELL International Trading Company BV
Stadhouderskade 55,
1072 AB Amsterdam
The Netherlands)

[Questions?] [Comments?] [Call XXX-XXX-XXXX]
(For Consumer Care contact:)
BISSELL Homecare, Inc.
P.O. Box 1888
Grand Rapids, MI 49501



CROSSWAVE™

USER GUIDE
[INSERT SERIES #] SERIES



IMPORTANT SAFETY INSTRUCTIONS

READ ALL INSTRUCTIONS BEFORE USING YOUR CROSSWAVE™.

When using an electrical appliance, basic precautions should be observed, including the following:

WARNING

TO REDUCE THE RISK OF FIRE, ELECTRIC SHOCK, OR INJURY:

[Note to Reviewer: Electrical Safety Statements will be inserted here - INCLUDING:]

»Use only BISSELL cleaning products intended for use with this appliance to prevent internal component damage. See the Cleaning Fluid section of this guide.

SAVE THESE INSTRUCTIONS FOR FUTURE USE

This model is for household use only. Commercial use of this unit voids the manufacturer's warranty.

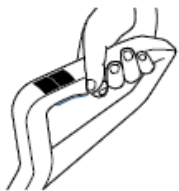
Thanks for buying a BISSELL CrossWave™

We love to clean and we're excited to share one of our innovative products with you. We want to make sure your multi-surface cleaner works as well in two years as it does today, so this guide has tips on using (pages #-#), maintaining (pages #-#), and if there is a problem, troubleshooting (page #).

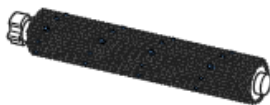
Your multi-surface cleaner needs a little assembly before you can put it to work, so flip to page # and let's get started!

What's In The Box?

[Note to Reviewer: examples of Graphics and Naming of Items may vary slightly.]



Handle



Dual Action
Multi-Surface
Brush Roll



Storage Tray



Brush Roll
Drying Tray



[Insert name of Cleaner]

[Insert Name of Hard Surface Sanitizer EPA Reg. No. 6297-2]

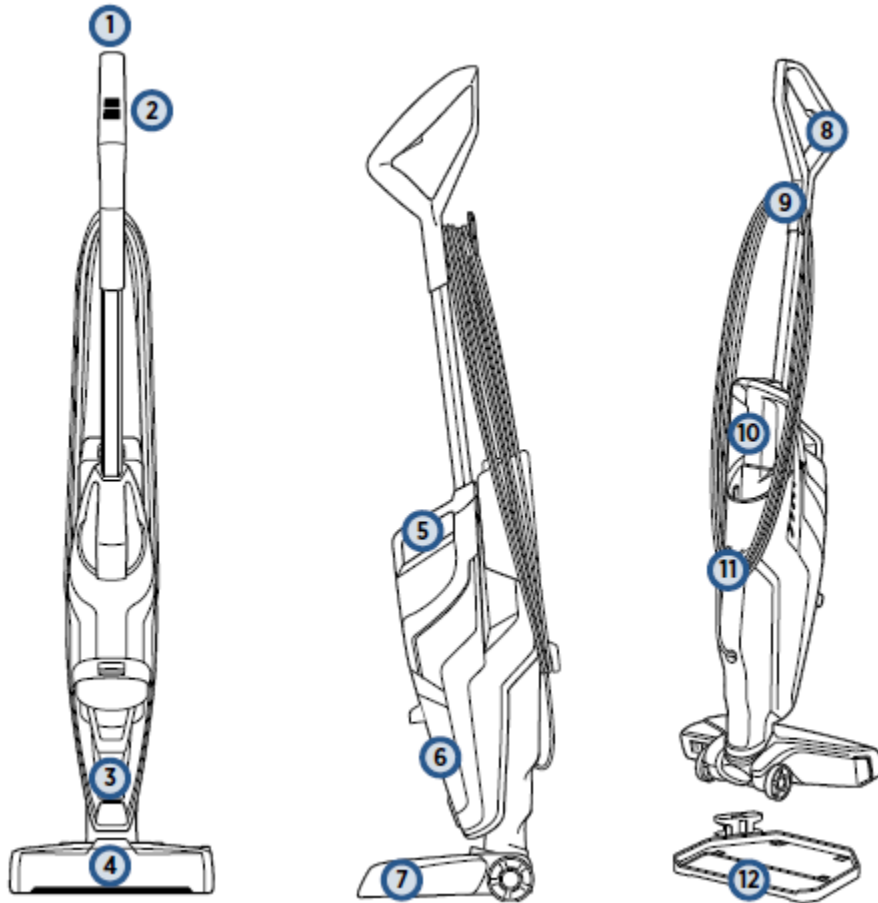
NOTE: Standard accessories may vary by model. To identify what should be included with your purchase, please refer to the "Carton Contents" list located on the carton top flap.

Safety Instructions.....[Page #]
 Product View.....[Page #]
 Assembly.....[Page #]
 Cleaner and Sanitizer Formulas....[Page #]
 Operations.....[Page #]

Maintenance & Care.....[Page #]
 Troubleshooting.....[Page #]
 Warranty.....[Page #]
 Service.....[Page #]
 Product Registration.....[Page #]

Getting to Know Your CrossWave™

[Note to Reviewer: The below or similar graphics will be used. Names of parts and placement of numbers could vary.]



- 1 [insert part name]
- 2 [insert part name]
- 3 [insert part name]
- 4 [insert part name]
- 5 [insert part name]
- 6 [insert part name]

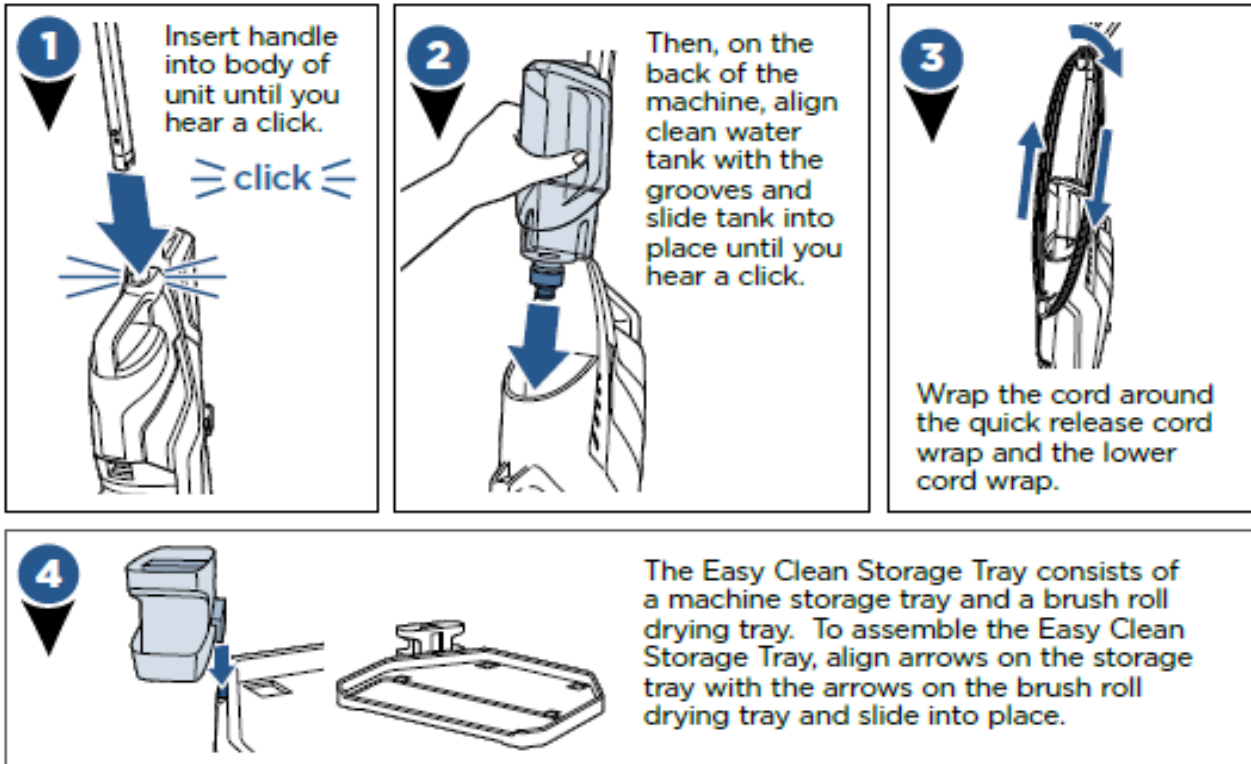
- 7 [insert part name]
- 8 [insert part name]
- 9 [insert part name]
- 10 [insert part name]
- 11 [insert part name]
- 12 [insert part name]

Assembly

[Note to Reviewer: Below is an example of text and graphics. This may vary slightly.]

⚠ WARNING

Do not plug in your CrossWave™ until you are familiar with all instructions and operating procedures.



NOTE: To easily unwrap the cord for use, just turn the quick release cord wrap downward to remove the cord from the cord wrap.

Cleaner and Sanitizer Formulas

⚠ WARNING

To reduce the risk of fire and electric shock due to internal component damage, use only BISSELL cleaning fluids intended for use with the hard floor device.

Keep plenty of CrossWave™ formulas on hand so you can clean your hard floors and area rugs whenever it fits your schedule.

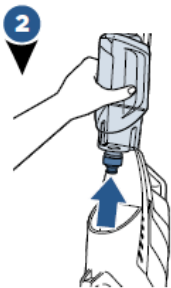
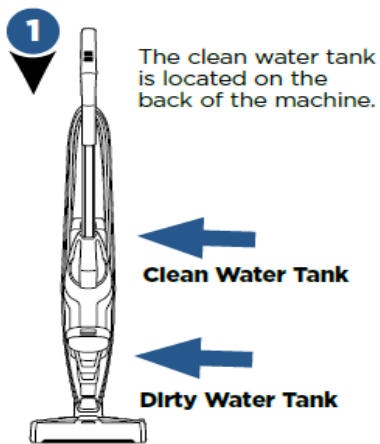
Always use CrossWave™ formulas in your machine. Other solutions may harm the machine and void the warranty.

CROSSWAVE™ FORMULAS

[Insert Graphic Image of Bottle]	[Insert Graphic Image of Bottle]	[Insert Graphic Image of Bottle]	[Insert Graphic Image of Bottle]
Multi-Surface Cleaner Formula	Wood Floor Cleaner Formula	Area Rug Cleaner Formula	Hard Surface Sanitizer
Great for cleaning ALL sealed floors and area rugs	Restore your wood floors' natural shine	Cleans by removing stuck on and embedded dirt from area rugs	Clean and Sanitize your floor in one easy step

Filling Your Clean Water Tank

[Note to Reviewer: The below or similar graphics depicting the steps may be used with the text below.]



Lift the clean water tank straight up to remove from the machine.



Unscrew the cap from the clean water tank.

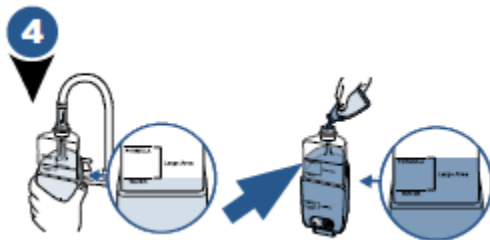
The clean water tank has two measuring volumes depending on the amount of space you would like to clean. (See table for details for your CrossWave model.)

[Note to Reviewer: The below table does not need to appear in the printed manual but is a reference for inputting the appropriate product and water volumes in the use directions steps indicated below.]

FORMULA TANK - DILUTION PREPARATION INSTRUCTIONS

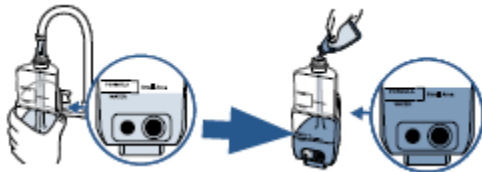
[MODEL NAME]	(FILL LINE)	Amount of Product (fl. oz.)	Amount of (Warm) Tap Water
[Insert CrossWave Model name(s)]	(Large Area (700 sq ft)) (Small Area (<350 sq ft)) (NA)	0.5	3 fl. oz.
		1	6 fl. oz.
		1.5	9 fl. oz.
		2	12 fl. oz.
		2.5	15 fl. oz.
		3	18 fl. oz.
		3.5	21 fl. oz.
		4	24 fl. oz.
		4.5	27 fl. oz.
		5	30 fl. oz.

[Step 4 for machines with a small and large fill line]



For **large area cleaning** (up to 700 sq ft)

- Fill formula tank with (warm) tap water to the second water fill line [insert water volume from table above].
- Then add formula to the second formula fill line [insert formula volume from table above].



For **small area cleaning** (<350 sq ft)

- Fill formula tank with (warm) tap water to the first water fill line (insert water volume from table above).
- Then add formula to the first formula fill line (insert formula volume from table above).

[Step 4 for machines with only one fill line:]

- Fill machine formula tank with (warm) water to Water fill line (insert formula ounces as indicated in Product Dilution Instructions table).
- Then add formula to Formula fill line (insert water ounces as indicated in Product Dilution Instructions table).

[Step 4 if a pre-measured packet inserted into the machine. Graphics are optional:]

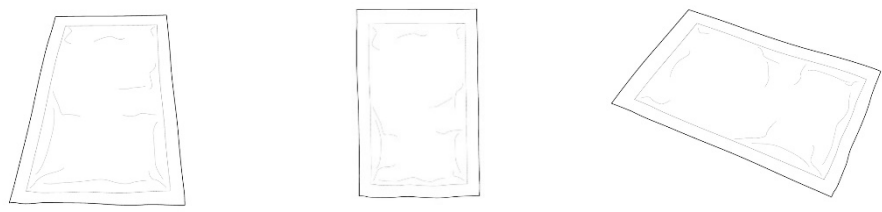
[For Use with pre-measured sachets/packets in machine with an integrated dispenser in formula-only tank]

- a. Fill the Clean Water Tank with (warm) water to the Fill line indicated on the tank – [insert water volume from table above]. (Use warm (140F/60C max) water.)
- b. Lift Formula lid and place a [insert formula ounces as indicated in Product Dilution instructions table] (BISSELL) [insert product name] [sachet] [packet] [pouch] in holder.

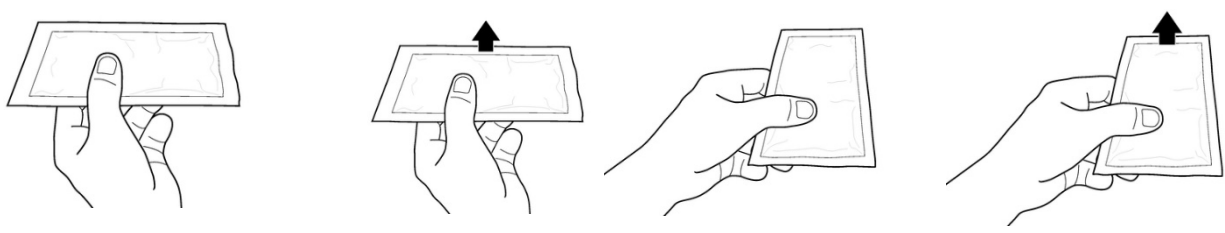
[For Use with pre-measured sachets/packets in machine withOUT an integrated dispenser in formula-only tank]

- a. Fill the Clean Water Tank with (warm) water to the Fill line indicated on the tank – [insert water volume from table above]. (Use warm (140F/60C max) water.)
- b. Tear open [insert formula ounces as indicated in Product Dilution instructions table] (BISSELL) [insert product name] [sachet] [packet] [pouch] at indicated notch and pour entire contents into tank.

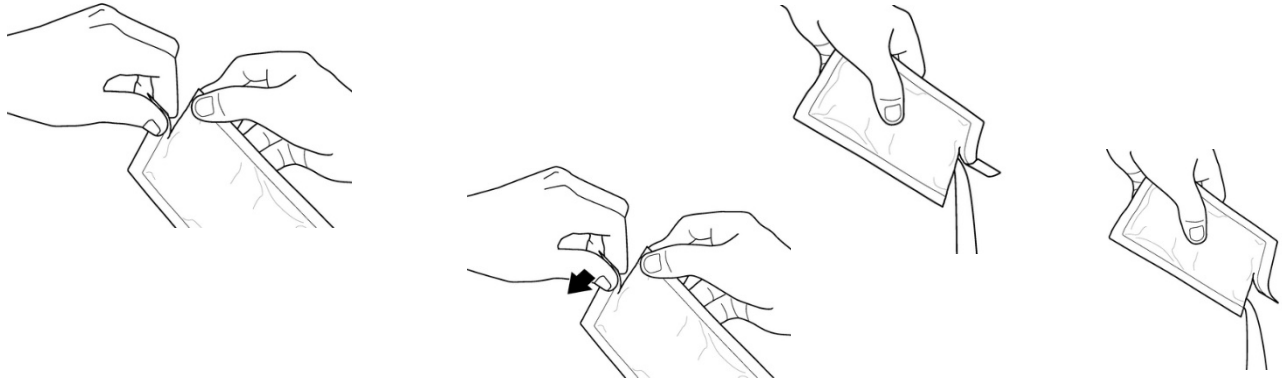
Packet image]



[Insert pre-measured packet into machine:]

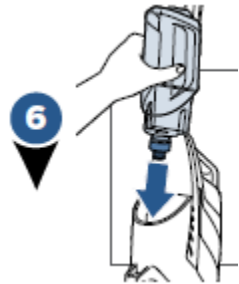


[Tear open pre-measured packet, pour]





Screw the cap tightly back onto the clean water tank until completely closed.



On the back of the machine, align clean water tank with the grooves and slide tank into place until you hear a click.

[A few notes about filling the clean water tank:

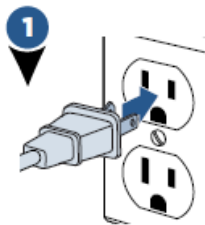
- Fill with warm (140°F/60°C MAX) tap water and add the appropriate BISSELL solution. **DO NOT USE BOILING WATER. DO NOT HEAT WATER OR TANK IN MICROWAVE.]**

Cleaning Your (Hard) Floors

(We have cleaning tips for stuck-on messes and more at support.BISSELL.com.)

For use on sealed and non-porous flooring(including hardwoods, floors, wood floors, ceramic tile, terrazzo and vinyl).

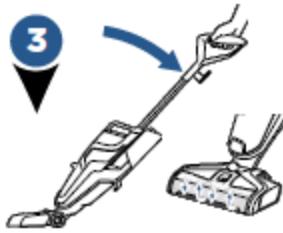
[Note to Reviewer: The below or similar graphics depicting the steps may be used with the steps below.]



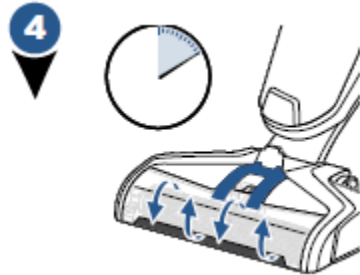
- 1) Plug machine into a properly grounded outlet.



- 2) Select cleaning mode:
To start cleaning your hard floors, turn the machine ON pressing the HARD FLOOR button. Once the setting is selected, the dry vacuum will turn on. To turn OFF, press the HARD FLOOR setting a second time.



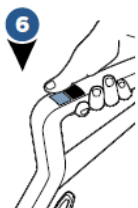
- 3) Recline the body of the machine backward to start the brush roll spinning. To stop the brush roll spinning, you will need to stand the machine upright.



- 4) Before each use, hold the solution spray trigger for 10 seconds to prime the system with cleaning solution. LED lights illuminate when holding the trigger.
NOTE: When solution is flowing, you will see bubbles forming at the edges of the brush roll window.



- 5) **To clean:** Hold the spray trigger to apply solution to floor on both forward and backward passes. **To Sanitize:** Remove visible soil. Using the Hard Surface Sanitizer [or insert brand name], hold spray trigger to apply solution to floor on both forward and backward passes. Allow to remain visibly wet for 5 minutes.
NOTE: Hard Surface Sanitizer formula is for use on hard, sealed floors only. Do not use on carpet or area rugs. Read sanitizer container label fully prior to use.

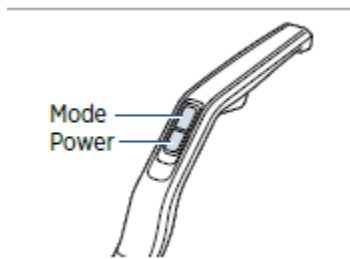


- 6) To dry hard floors faster, release the trigger and clean a second pass without dispensing solution. Stay off cleaned area until completely dry.

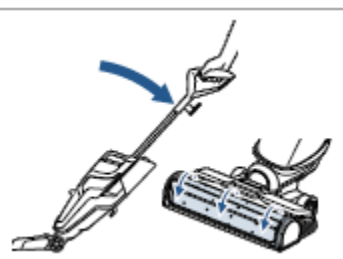
TIP: When cleaning excessively dirty or muddy hard floors or if your brush roll looks dirty, use the Easy Clean Storage Tray to rinse your brush roll before cleaning your area rugs.

TIP: For overly challenging and stuck-on messes on your hard floors, activate the **RUG** mode and hold your CrossWave™ over the mess. Using short passes while holding the trigger allows the multi-surface brush to go to work.

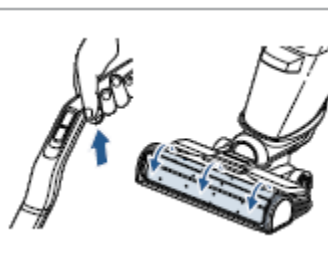
[ALTERNATE CLEANING YOUR FLOORS SECTION]



1. Press the power button ON. Press the mode button to switch between modes.



2. Recline the machine to start the brush roll spinning. When the machine is standing upright, brush roll will not spin.

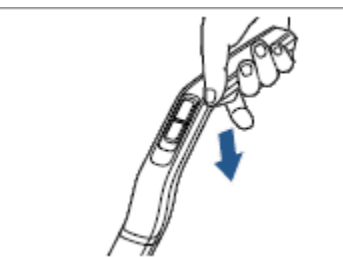


3. Before each use, hold the solution spray trigger for 10 seconds to prime the system with cleaning solution.

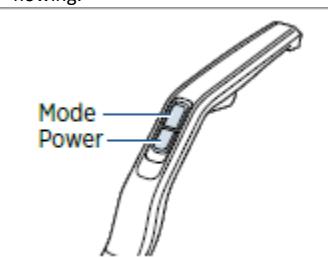
Note: LED lights are always illuminated, but turn blue when holding the trigger. Bubbles will appear in the brush roll window when the solution is flowing.



4. To clean, hold the solution spray trigger to apply solution on forward pass. For heavier soils, press the steam button if available.



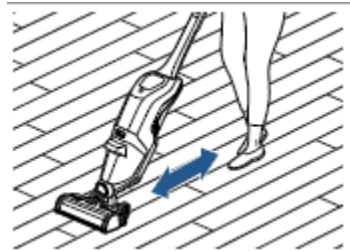
5. Release the trigger and make a backward pass without dispensing solution.



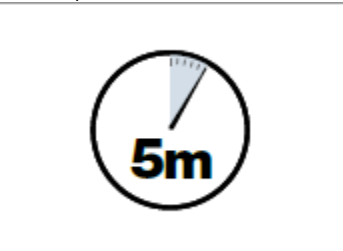
6. Turn OFF the machine by pressing the power button.

Sanitizing Hard Floors

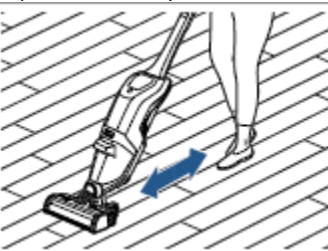
Please read the Hard Floor Sanitize formula label prior to each use. Use on hard nonporous floors only.



1. Follow cleaning instructions above to remove visible soils. To Sanitize: Hold trigger down to apply solution to floor.



2. Allow formula to remain visibly wet on the floor for five minutes.



3. With the spray trigger released, make forward and backward passes to extract solution.

ATTENTION Do not overwet carpet or hardwood floors. Be careful not to run over loose objects or edges of area rugs. Stalling the brush may result in premature belt failure.

Cleaning Areas Rugs

[Note to Reviewer: Cleaning Area Rug Instructions and Graphics will be inserted on this page.]
Sanitizer product is not for use on rugs.

Plug machine into a properly grounded outlet.

Select cleaning mode:

To start cleaning your rugs, turn the machine ON pressing the **RUG** button. Once the setting is selected, the dry vacuum will turn on. To turn OFF, press the **RUG** setting a second time.

Recline the body of the machine backward to start the brush roll spinning. To stop the brush roll spinning, you will need to stand the machine upright.

Before each use, hold the solution spray trigger for 10 seconds to prime the system with cleaning solution. LED lights illuminate when holding the trigger.

NOTE: When solution is flowing, you will see bubbles forming at the edges of the brush roll window.

To clean, hold the solution spray trigger to apply solution on both forward and backward passes.

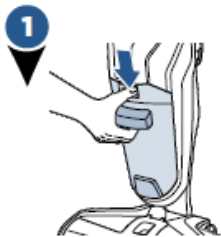
To dry area rugs faster, release the trigger and clean a second pass without dispensing solution.

NOTE: The RUG button dispenses twice the solution of the HARD FLOOR button to help with area rug cleaning.

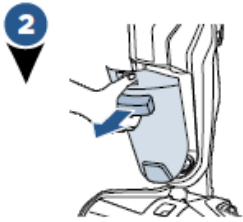
TIP: For the most thorough clean, make 4 wet passes and 4 dry passes using overlapping strokes over each area you clean on your rugs.

Maintenance: Empty Dirty Water Tank

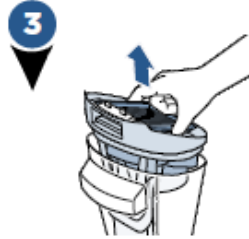
[Note to Reviewer: The below or similar graphics depicting the steps may be used with the steps below.]



To release dirty water tank, press down on recessed button on the top of the dirty tank.



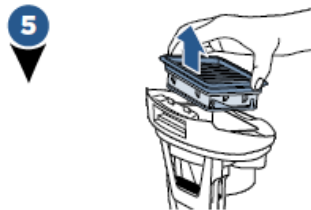
Grab the front handle while pressing down on button and pull dirty water tank away from the unit.



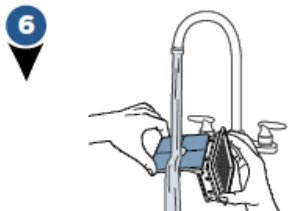
Grasp top of dirty water tank in recessed areas on each side of the filter and pull upward to remove the top of the tank.



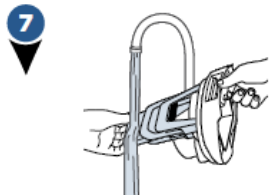
Pour dirty water and debris out. Rinse the inside of the dirty water tank.



Remove the filter from the top of the dirty water tank by pulling it up.



Hand wash the vacuum filter and screen with warm water and mild detergent.



Rinse the float located at the bottom of the top of the dirty water tank.



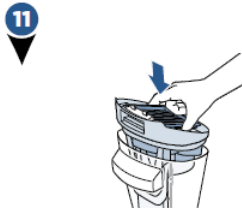
If the inside area where the dirty water tank sits is dirty, wipe it clean with a rag or towel.



Leave parts out to dry before reassembling.



Place vacuum filter back into the top of the dirty water tank.



Once parts are dry, reassemble and replace the top of dirty water tank.



Angle the dirt tank back into body of machine inserting bottom first. Then tilt the top of the dirt tank toward the machine and push into place until you hear a click.

Did You Know?

The Float is what prevents your dirty tank from overflowing. When your dirty tank is full, the float will shut off your suction motor creating a high pitched sound indicating it is time to empty your dirty water tank.

NOTE: Make sure to clean your dirty tank and let all components dry out after each use to keep your product at its best.

WARNING

To reduce the risk of fire, electric shock or injury, turn power OFF and disconnect plug from electrical outlet before performing maintenance or troubleshooting.

Maintenance: Cleaning the Brush Roll and Brush Chamber

[Note to Reviewer: Instructions and graphics will be displayed here. The information may only include steps for cleaning the various pieces of the machine by removing the parts for washing/rinsing with water.]

Maintenance: Easy Clean Storage Tray

[Note to Reviewer: Instructions and graphics will be displayed here. The information may only include steps for cleaning the various pieces of the machine by removing the parts for washing/rinsing with water.]

Machine Storage

Put the unit away in a closet or basement until the next use. Store cleaner in a protected, dry area. Since this product uses water, it must not be stored where there is a danger of freezing. Freezing will damage internal components and will void the warranty.

Troubleshooting

Problem	Possible causes	Remedies
[Title Display]	[Listed causes]	[Suggested fix]

Warranty

[Note to Reviewer: Warranty text displayed here may vary slightly.]

This warranty gives you specific legal rights, and you may also have other rights which may vary from state to state. If you need additional instruction regarding this warranty or have questions regarding what it may cover, please contact BISSELL® Consumer Care by E-mail or telephone as described below.

It may be necessary to obtain some of your personal information, such as a mailing address, to fulfill terms of this warranty. Any personal data will be handled pursuant to BISSELL's Privacy Policy, which can be found online at www.BISSELL.com/privacy-policy.

Limited Two-Year Warranty

Subject to the ***Exceptions and Exclusions from the Terms of the Limited Warranty**, upon receipt of the product BISSELL will repair or replace (with new, refurbished, lightly used, or remanufactured components or products), at BISSELL's option, free of charge from the date of purchase by the original purchaser, for two years, any defective or malfunctioning part.

See information below on "If your BISSELL product should require service".

This warranty applies to product used for personal, and not commercial or rental, service. This warranty does not apply to fans or routine maintenance components such as filters, belts or brushes. Damage or

malfunction caused by negligence, abuse, neglect, unauthorized repair, or any other use not in accordance with the user guide is not covered. This warranty will only be valid if the product is used in the same country in which it was sold.

BISSELL is not liable for incidental or consequential damages of any nature associated with the use of this product. BISSELL's liability will not exceed the purchase price of the product.

Some states do not allow the exclusion or limitation of incidental or consequential damages, so the above limitation or exclusion may not apply to you.

***Exceptions and Exclusions from the Terms of the Limited Warranty**

This warranty is exclusive and in lieu of any other warranties, either oral or written. Any implied warranties, which may arise by operation of law, including the implied warranties of merchantability and fitness for a particular purpose, are limited to the two-year duration from the date of purchase as described above.

Some states do not allow limitations on how long an implied warranty lasts, so the above limitation may not apply to you.

NOTE: Please keep your original sales receipt. It provides proof of date of purchase in the event of a warranty claim.

Service

[Note to Reviewer: Machine Service contact information will be provided here.]

Register your product today!

[Note to Reviewer: Product registration, rewards, feedback request etc. will be inserted here.]

Manufactured [by] [for]:
Bissell Homecare, Inc.
2345 Walker Ave, NW
Grand Rapids, MI 49544

Manufactured by
[BISSELL brand
Questions or comments 1.800.237.7691 ©(year)
BISSELL Homecare Inc., Grand Rapids, MI 49544
USA
www.bissell.com]

©(year) BISSELL Homecare Inc.
BISSELL International Trading Company BV
Stadhouderskade 55,
1072 AB Amsterdam
The Netherlands

[Questions?] [Comments?] [Call XXX-XXX-XXXX]

For Consumer Care contact:
BISSELL Homecare, Inc.
P.O. Box 1888
Grand Rapids, MI 49501