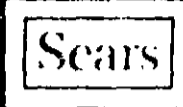


42 4237

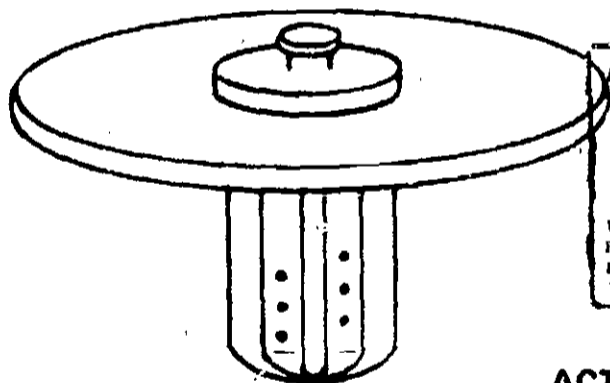


**100% ACTIVE TRI-CHLOR  
CONCENTRATE TABLET CARTRIDGE**

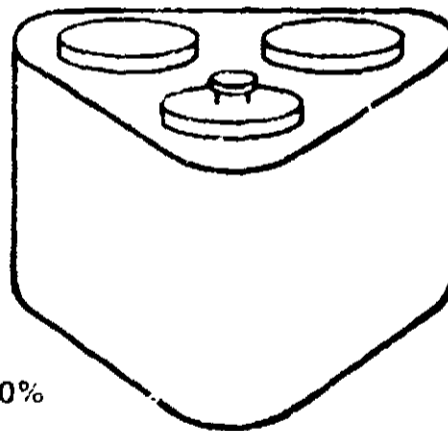
**NET WT. 4 POUNDS**

Contains 128 Tablets, approximately 1/2 oz. each.

**FOR USE IN FLOAT RINGS OR AUTOMATIC CHLORINATORS**



ACCEPTED  
10 MAY 1979  
6284-25  
UNDER THE FEDERAL INSECTICIDE  
FUNGICIDE AND RODENTICIDE ACT  
FOR ECONOMIC PESTICIDE REGISTER  
EPA REG. NO.



**ACTIVE INGREDIENT:**

Trichloro-S-Triazinetrione.....100%  
Available Chlorine.....90%

**DANGER**

**KEEP OUT OF REACH OF CHILDREN**

See additional precautions and first aid on back panel

E.P.A. REG. NO. 6284-25-539

## SEARS TRI-CHLOR CONCENTRATE TABLET CARTRIDGE CONVENIENT AND EFFECTIVE BACTERIA AND ALGAE CONTROL

Slow dissolving, completely soluble SEARS Tri-chlor Concentrate Tablets take the work out of pool care by providing a continuous and economical system of chlorine disinfection. For effective bacteria and algae control maintain an available chlorine level of 1.0 to 2.0 ppm as determined by SEARS Chlorine Test Kit.

### DIRECTIONS FOR USE

It is a violation of federal law to use this product in a manner inconsistent with its labeling.

### POOL START-UP — (CONDITIONING) INSTRUCTIONS

When first filling your new pool or refilling with fresh water at any time:

1. Super chlorinate (shock treat) pool with SEARS Di-chlor Granular Concentrate, as prescribed on label, to burn out harmful bacteria.
2. Test pool water with SEARS Test Kit and bring pH into 7.2-7.6 range. Add SEARS Dry Acid to lower pH or Soda Ash to increase pH as prescribed on labels.
3. Add SEARS Water Conditioner as prescribed on label to protect chlorine against loss due to sunlight.

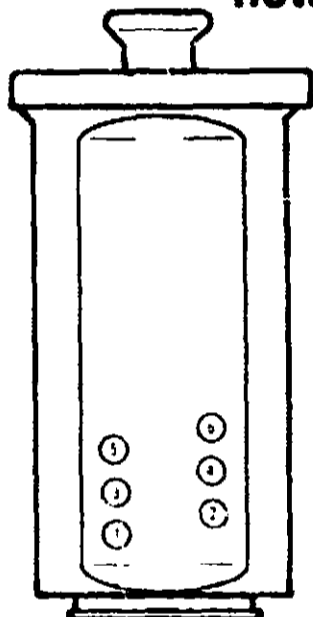
### MAINTENANCE TABLET FEEDING PROGRAM FOR PROPERLY PRE-CONDITIONED POOLS

The number of tablets required for your pool will vary depending on temperature, wind, rain, pool usage and feeding method; float feeder, skimmer, or automatic chlorinator.

### PERIODIC SUPER CHLORINATION

Heavy swimmer loads, wind, dust and rainfall can cause bacteria and microscopic debris to accumulate in pool water. To maintain clean, clear water, super chlorinate with SEARS Di-chlor Granular Concentrate, as prescribed on label, every two weeks, weekly during hot weather.

## HOW TO ACTIVATE YOUR TABLET CARTRIDGE



**STEP 1.** Remove red plug from hole indicated for gallonage nearest your pool size.

Hole Number	Gallonage	Hole Number	Gallonage
1	10,000	4	40,000
2	20,000	5	50,000
3	30,000	6	60,000

**STEP 2.** Remove all red plugs below the one you removed in Step 1.

**STEP 3.** Check Chlorine level daily with SEARS Test Kit. Maintain readings of 1.0 to 2.0 ppm during the swimming season. To **RAISE CHLORINE LEVEL** — remove next highest red plug. To **LOWER CHLORINE LEVEL** — re-insert plug in top open hole.

Maintain pH reading in a range from 7.2 to 7.6 on your test kit. Add SEARS Dry Acid or Soda Ash as prescribed on labels.

### DANGER:

**STORAGE AND DISPOSAL:** Keep product dry in tightly closed container when not in use. Store in a cool, dry, well ventilated area away from heat or open flame. In case of decomposition isolate container in open area if possible and flood with large amounts of water. Do not reuse empty container. Rinse empty container thoroughly with water to dissolve all material before discarding. Place in trash collection or dispose in approved landfill area, or bury in a safe place.

**KEEP OUT OF REACH OF CHILDREN  
HAZARDS TO HUMANS AND DOMESTIC  
ANIMALS**

**DANGER:** Corrosive, causes eye damage. May be fatal if swallowed. Do not get in eyes, on skin, or on clothing. Irritating to nose and throat. Avoid breathing dust. May cause burns to broken skin. Wear goggles or face shield and protective clothing when handling. Wash hands after handling.

**PRACTICAL TREATMENT (FIRST AID):** If swallowed feed gruel, cooked cereal, or bread soaked in milk, followed by olive oil or cooking oil. In case of personal contact, remove excess material and flush skin or eyes with cold water for at least 15 minutes. For eyes get medical attention as soon as possible. Remove and wash contaminated clothing before reuse.

**CHEMICAL HAZARDS:** Strong oxidizing agent. Do not use moist or damp utensils. Contamination with moisture, dirt, organic matter, or other chemicals, or any other foreign matter, may start a chemical reaction with generation of heat, liberation of hazardous gases, and possible generation of fire.

**ENVIRONMENTAL HAZARDS:** This pesticide is toxic to fish. Keep out of lakes, streams, ponds, or public waters. Permits may be required for discharges containing this pesticide into public waters. For guidance contact the regional office of the Environmental Protection Agency.

Sold by SEARS, ROEBUCK AND CO.,  
CHICAGO, ILLINOIS 60684  
EPA Est. 6284-DH-2