

# Grantsport

## t.a.s.k. force

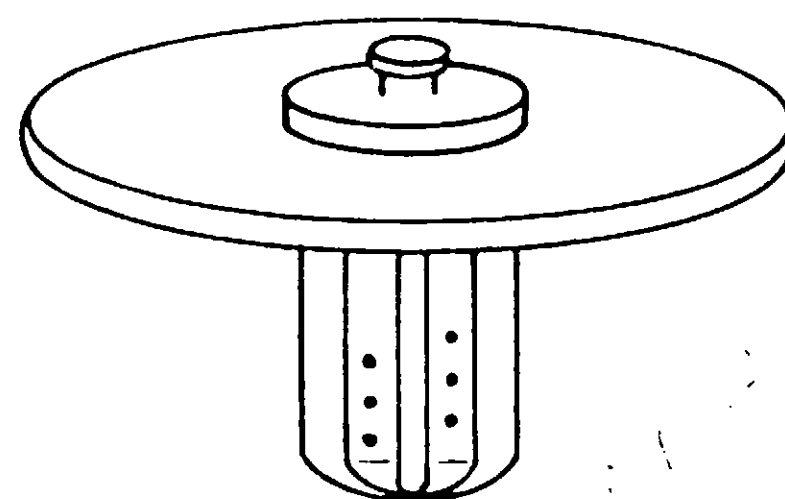
### Chlorine Tablet Cartridge

NET WEIGHT: 4 POUNDS

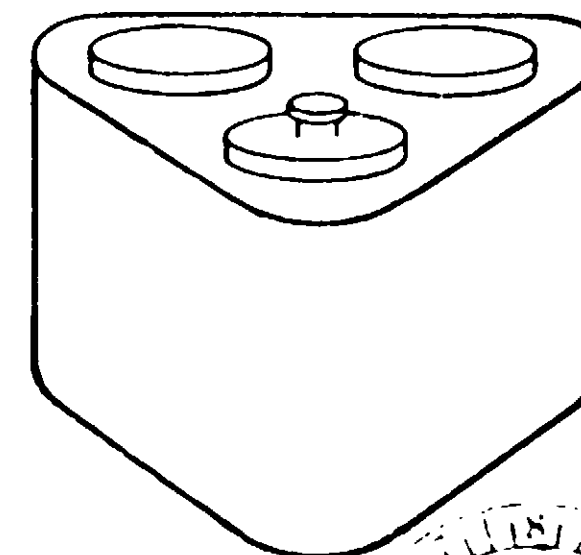
500-143

E.P.A. REG. NO. 6284-23-12001

FLOATING CHLORINATOR



REPLACEMENT CARTRIDGE



ACTIVE INGREDIENT

ACCEPTED

Trichloro-s Triazinetrione

Available Chlorine

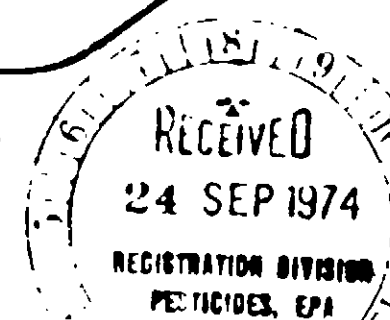
90%

100%

**DANGER**

Keep Out of Reach of Children

See additional precautions and first aid on back panel



# CONCENTRATED CHLORINE TABLET CARTRIDGE

NET WEIGHT 4 POUNDS

## FLOATING CHLORINATOR AND/OR REPLACEMENT CARTRIDGE FOR MECHANICAL FEEDERS

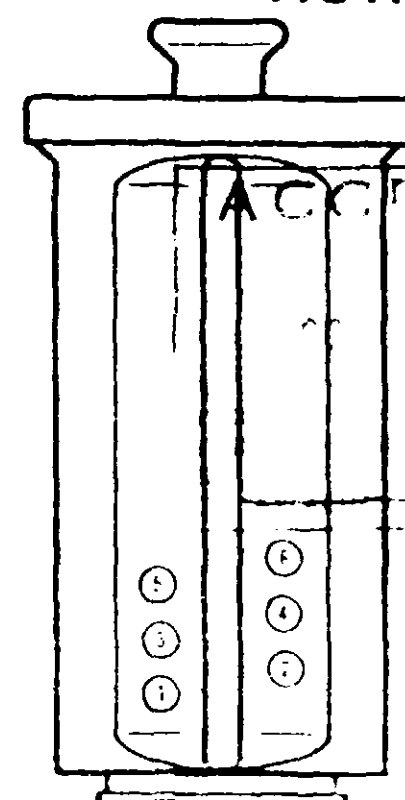
### POOL START-UP (PRE-CONDITIONING) INSTRUCTIONS

When filling your new pool or refilling with fresh water at any time:

1. Bring pool water pH to a range reading between 7.2 and 7.6 on your test kit and add Task Force Water Conditioner to stabilize the pool water.
2. Super chlorinate pool water by adding Task Force Granular Chlorine as prescribed on label.
3. Start tablet feeding program.

DO NOT THROW CHLORINE TABLETS DIRECTLY INTO POOL - SPOTTING WILL OCCUR

### HOW TO ACTIVATE YOUR TABLET CARTRIDGE



STEP 1. Remove red plug from hole indicated for gallonage nearest your pool size.

Hole Number	Gallage	Hole Number	Gallage
1	10,000	4	40,000
2	20,000	5	50,000
3	30,000	6	60,000

STEP 2. Remove all red plugs below the one you removed in Step 1.

STEP 3. Check Chlorine level daily with a test kit. Maintain readings of 2.0 to 3.0.

STEP 4. FOR MAXIMUM PROTECTION SUPER CHLORINATE (SHOCK) YOUR POOL WATER WITH TASK FORCE GRANULAR CHLORINE EVERY TWO WEEKS.

NEVER MIX CONCENTRATED CHLORINE (TRICHLORO-S-TRIAZINETRIONE)  
WITH OTHER CHEMICALS OR OTHER TYPES OF CHLORINE  
DO NOT REUSE CONTAINER — RINSE AND DISCARD WHEN EMPTY.

This product is toxic to fish. Treated effluent should not be discharged where it will drain into lakes, streams, ponds, or public water. Do not contaminate water by cleaning of equipment, or disposal of wastes. Apply this product only as specified on this label.

### DANGER: KEEP OUT OF REACH OF CHILDREN

**DANGER: CORROSIVE.** Causes eye damage. May cause burns on broken skin. Irritating to nose and throat if inhaled. May be harmful or fatal if swallowed. Do not get in eyes, on skin, or on clothing. Protect eyes when handling. Avoid breathing dust. **STRONG OXIDIZING MATERIAL.** Contact with organic matter or any foreign material may result in the explosive decomposition. Moisture contamination of lot may liberate irritating and hazardous chlorine-containing gases. Avoid contamination with combustible materials. Keep away from heat and moisture. Store in cool, dry, well-ventilated area. Keep container tightly closed when not in use. Use only dry, clean measures. Mix only with water. Rinse container thoroughly clean with water before discarding. **FIRST AID:** Internal: If swallowed, do not induce vomiting, followed by water or milk. **External:** In case of contact, immediately flush eyes or skin with copious amounts of water for at least 15 minutes. Call a physician immediately in case of eye irritation or contact with the eyes.

**Grantsport**

**t.a.s.k. force**  
**Chlorine**  
**Tablet Cartridge**

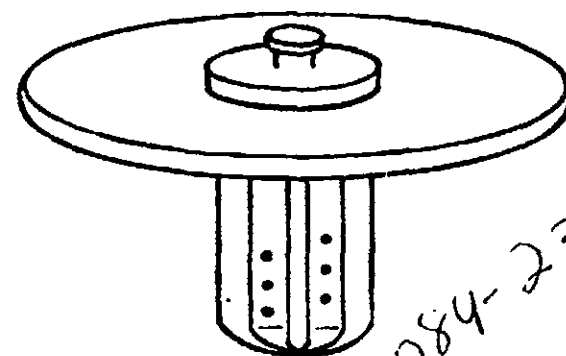
NET WEIGHT: 4 POUNDS

BEST DOCUMENT AVAILABLE

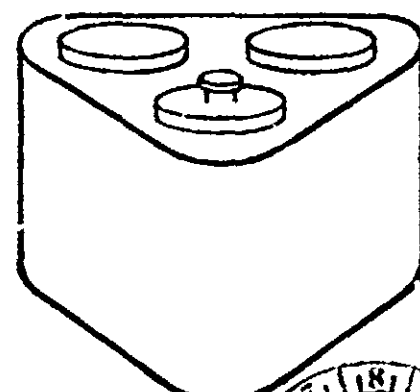
500-143

E.P.A. REG. NO. 6284-23-12001

FLOATING CHLORINATOR



REPLACEMENT CARTRIDGE



6284-23

ACTIVE INGREDIENT

ACCEPTED

Trichloro-s-Triazinetrione

Available Chlorine

90%

100%

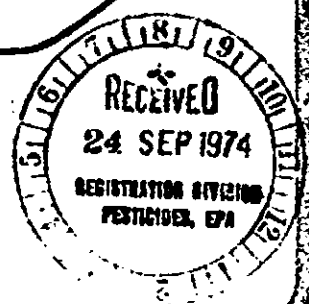
OCT 3 1974

UNDER FEDERAL ANTIMONY  
FUNGICIDE AND RODENTIDE ACT  
FOR USE IN  
EPA REG. NO. 6284-23-12001

**DANGER**

**Keep Out of Reach of Children**

See additional precautions and first aid on back panel



# CONCENTRATED CHLORINE TABLET CARTRIDGE

NET WEIGHT 4 POUNDS

## FLOATING CHLORINATOR AND/OR REPLACEMENT CARTRIDGE FOR MECHANICAL FEEDERS

### POOL START-UP (PRE-CONDITIONING) INSTRUCTIONS

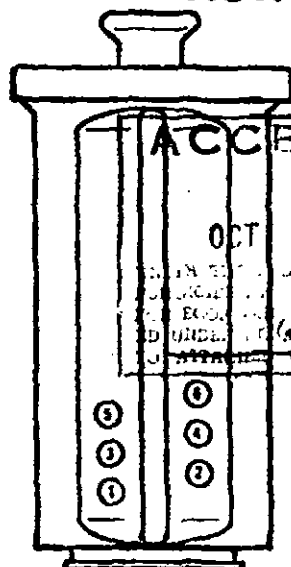
When filling your new pool or refilling with fresh water at any time:

1. Bring pool water pH to a range reading between 7.2 and 7.6 on your test kit and add Task Force Water Conditioner to stabilize the pool water.
2. Super chlorinate pool water by adding Task Force Granular Chlorine as prescribed on label.
3. Start tablet feeding program.

BEST DOCUMENT AVAILABLE

DO NOT THROW CHLORINE TABLETS DIRECTLY INTO POOL - SPOTTING WILL OCCUR

### HOW TO ACTIVATE YOUR TABLET CARTRIDGE



STEP 1. Remove red plug from hole indicated for gallonage nearest your pool size.

Hole Number	Gallonage	Hole Number	Gallonage
1	10,000	4	40,000
2	20,000	5	50,000
3	30,000	6	60,000

STEP 2. Remove all red plugs below the one you removed in Step 1.

STEP 3. Check Chlorine level daily with a test kit. Maintain readings of 2.0 to 3.0.

STEP 4. FOR MAXIMUM PROTECTION SUPER CHLORINATE (SHOCK) YOUR POOL WATER WITH TASK FORCE GRANULAR CHLORINE EVERY TWO WEEKS.

NEVER MIX CONCENTRATED CHLORINE (TRICHLORO-S-TRIAZINETRIONE)  
WITH OTHER CHEMICALS OR OTHER TYPES OF CHLORINE.  
DO NOT REUSE CONTAINER — RINSE AND DISCARD WHEN EMPTY.

This product is toxic to fish. Treated effluent should not be discharged where it will drain into lakes, streams, ponds, or public water. Do not contaminate water by cleaning of equipment, or disposal of wastes. Apply this product only as specified on this label.

### DANGER: KEEP OUT OF REACH OF CHILDREN

**DANGER: CORROSIVE.** Causes eye damage. May cause burns on broken skin. Irritating to nose and throat if inhaled. May be harmful or fatal if swallowed. Do not get in eyes, on skin or on clothing. Protect eyes when handling. Avoid breathing dust. **STRONG OXIDIZING MATERIAL.** Contact with organic matter or any foreign material may result in fire or explosive decomposition. Moisture contamination or fire may liberate irritating and hazardous chlorine containing gases. Avoid contamination with combustible materials. Keep away from heat and moisture. Store in cool, dry, well-ventilated area. Keep container tightly closed when not in use. Use only dry, clean measures. Mix only with water. Rinse container thoroughly clean with water before discarding. **FIRST AID.** Internal—feed cooked cereal or bread soaked in milk, followed by olive oil or cooking oil. External—in case of contact, immediately flush eyes or skin with cold water for at least 15 minutes. Call a physician immediately in case of oral ingestion or contact with the eyes.

© 1974, McNeil Corp.

100-6 (SOLD BY W. T. GRANT CO., NEW YORK, N. Y.)