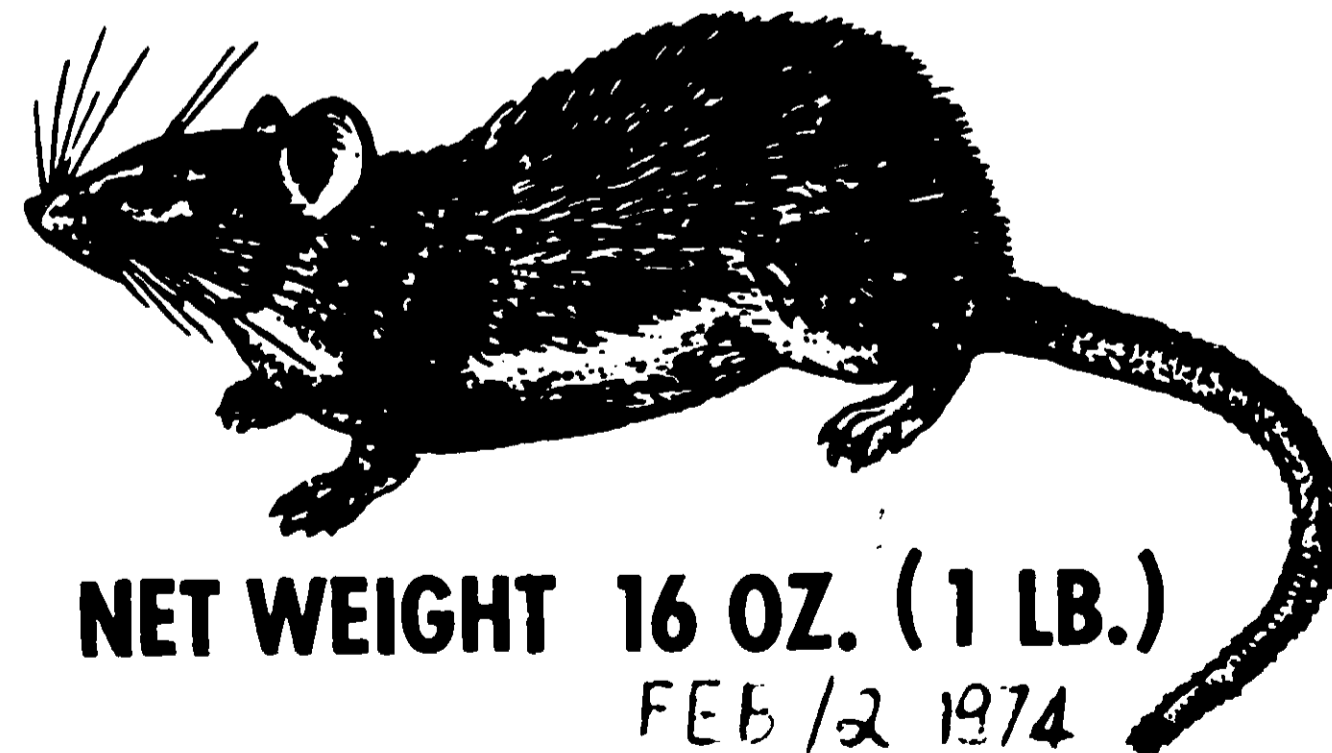


26

BLACK MAGIC



NET WEIGHT 16 OZ. (1 LB.)

FEB 12 1974

ACTIVE INGREDIENT:		
2-Pivalyl-1, 3-Indandione	0.025%	
INERT INGREDIENTS:	99.975%	
	<hr/>	100.000%

CAUTION: KEEP OUT OF REACH OF CHILDREN
SEE OTHER PRECAUTIONS ON THE BACK PANEL

IMPORTANT NOTICE

GENERAL DIRECTIONS: Place bait in locations where rats feed, water or travel. Bait placements along walls, in corners and in concealed locations where rats can feed unobserved are desirable. Contaminated or spoiled bait should be replaced promptly. Baiting should continue until all signs of feeding have stopped. Where a continuous source of infestation is present from nearby dumps or fields, permanent bait stations should be established and replenished as needed. Four ounces of bait per station should be the minimum amount used. An uninterrupted supply of bait should be maintained for at least 10 days.

CAUTION: This product contains as its active ingredient an anticoagulant chemical which if ingested by humans, domestic animals or pets may reduce the clotting ability of the blood and serious internal hemorrhage may result. In case baits are eaten, give a tablespoon of salt in a glass of warm water and repeat until vomit fluid is clear. Call a physician immediately.

Treated baits should be placed in locations not accessible to children, pets, wildlife and domestic animals or in tamper-proof bait boxes. Do not contaminate water by cleaning of equipment, or disposal of wastes. Apply this product only as specified on this label.

NOTE TO PHYSICIANS: When a human has been known to have ingested this product, blood transfusions combined with intravenous injections and oral doses of Vitamin K are indicated as in the case of hemorrhage caused by overdoses of Bishydroxycoumarin.

**DO NOT REUSE CONTAINER
DESTROY WHEN EMPTY**

CONDITIONS OF SALE: Seller makes no warranty, expressed or implied, concerning the use of this product other than indicated on the label. Buyer assumes all risk of use and/or handling of this material when such use and/or handling is contrary to label instructions.

**BLACK MAGIC COMPANY
P.O. BOX 16453 JACKSONVILLE, FLORIDA 32216
EPA REG. NO. 6248-3**