

PAID 10/15/50

**DIRECTIONS**

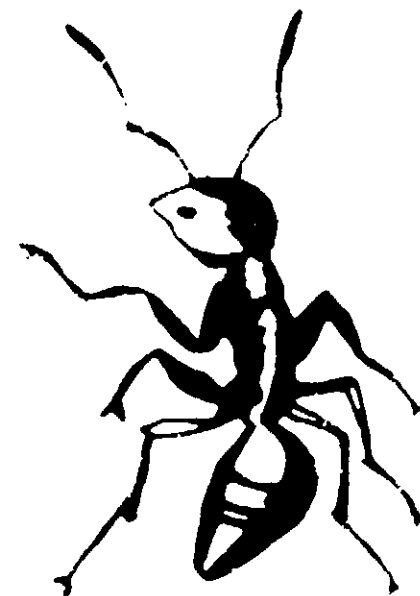
**FOR CONTROL OF ANTS** in lawns. Add one teaspoonful of concentrate to three gallons of water, and apply with sprinkler to 300 sq. ft. One pint treats 18,000 sq. ft., when diluted with 20 gallons of water.

**FOR CONTROL OF JAPANESE BEETLE GRUBS, Wireworms, Chiggers, Ticks,** and many other lawn pests, sprinkle lawn thoroughly with solution made by adding 1 tablespoon of concentrate to 3 gallons of water. This quantity treats 200 sq. ft. Eight ounces of concentrate in 35 gallons of water will treat 3500 sq. ft.

**TERMITES** can be blocked off by digging a trench approximately 30" deep around the entire foundation of the building to be protected; but the trench should not be dug below the top of the footing if this is shallower. Add 1 pint of this concentrate to 5 gallons of water and apply 2 gallons of this solution per 5 lineal feet along the trench outside of foundation walls, if the trench is not more than 15 to 18 inches deep; and apply 4 gallons of the diluted product per five lineal feet if the trench is over 15" deep but not more than 30".

# FINELAWN

## EMULSIFIABLE • INSECTICIDE



<b>ACTIVE INGREDIENTS:</b>	
Technical Chlordane*	72.0%
Petroleum Distillate	22.0%
<b>INERT INGREDIENTS:</b>	6.0%
<b>TOTAL</b>	<b>100.0%</b>
*Equivalent to 43.2% Octachloro-4, 7-Methanotetrahydroindane.	
U.S.D.A. REG. #6063-5	

**WARNING: KEEP OUT OF REACH OF CHILDREN!**  
SEE ADDITIONAL WARNINGS ON SIDE PANEL.  
ONE QUART

**CHLORDANE** remains effective in soil for two to three years. Solution will not damage plants, when applied as directed.

**CRABGRASS CONTROL:** Apply 1½ pints of spray in 24 gallons of water to 1,000 square feet of lawn to suppress Crabgrass Seedlings BEFORE germination or sprouting begins. This is an early season preventive treatment, and will not control Crabgrass plants. Timing is important — in most areas, germination occurs between April 15 to May 1. For smaller-areas, use 1 tablespoon per quart, applied to 20 square feet, (4'X5').

**CAUTION:** This solution, if brought into contact with the skin can cause toxic symptoms. Avoid inhalation and skin contact. In case of spillage on skin, wash with soap and water. Avoid contamination of feed or foodstuffs. Do not use on household pets or humans. Harmful if swallowed. Keep out of reach of children.

Toxic to fish and wildlife. Do not contaminate ornamental fish ponds. Note: Birds feeding in treated areas may be harmed.

**DISTRIBUTED BY E. J. KORVETTE, INC.**  
**PACKAGED BY CAMBRIDGE LABS, INC.**  
11 NORTHERN BLVD., GREAT NECK, N. Y.