

Reg # 5887-131
PRECAUTIONARY STATEMENTS
HAZARDS TO HUMANS & DOMESTIC ANIMALS
CAUTION

Avoid breathing of vapor and skin contact. Avoid contact with eyes. In case of contact, flush with water.

Foods should be removed or covered during treatment. All food processing surfaces should be covered during treatment or thoroughly cleaned before reuse. When using the product in these areas, apply only when the facility is not in operation.

Remove pets, birds and cover fish aquariums before spraying.

Do not smoke while spraying.

ENVIRONMENTAL HAZARDS

This pesticide is highly toxic to fish. Do not apply directly to water or wetlands (swamps, bogs, earthen, and potholes). Drift and runoff from treated sites may be hazardous to fish in adjacent waters. Do not contaminate water when disposing of equipment washwaters.

PHYSICAL OR CHEMICAL HAZARDS

Contents under pressure. Do not use or store near heat or open flame. Do not puncture or incinerate container. Exposure to temperatures above 130° may cause bursting.

DIRECTIONS FOR USE

It is a violation of Federal law to use this product in a manner inconsistent with its labeling.

SHAKE BEFORE USE. Point valve away from face and press button. Hold can at least 3 feet from surfaces which may stain and 18 inches from plants.

FOR CONTROL OF PESTS ON ORNAMENTAL PLANTS. For control of aphids, two-spotted spider mites, mealybugs and adult white flies on ornamental house and greenhouse plants (African violets, aralias, Christmas cherries, chrysanthemums, cinerarias, diffenbachias, fuschias, gloxinias, ivy, lantanas, Neathe bella palms, petunias, roses and snapdragons); and on outdoor plants (azaleas, chrysanthemums, euonymus, ivy, marigolds, petunias, roses, snapdragons and zinnias). Spray plants with a slow sweeping motion so that mist drifts into plant. Direct spray so that upper and lower leaf surfaces are contacted. Use caution on new growth and tender foliage. Repeat as necessary. When using outdoors, spray when air is still.

FOR CONTROL OF RESIDENTIAL AND INDUSTRIAL INSECTS Flies, Mosquitoes, Gnats, and Flying Moths: Direct spray at insects using short bursts (1 to 2 seconds) or treat unoccupied area as follows: Close doors and windows. With a sweeping motion direct spray upward to all parts of the room (8 to 10 seconds per 1000 cubic feet). Keep room closed for 15 minutes. Do not remain in treated area. Ventilate area after treatment is completed.

WASPS and HORNETS: Direct spray at these insects using short bursts. Spray thoroughly into nests, hiding and breeding places when insects have settled at night.

Ants: Spray trails, nests and points of entry. Spray on ants where possible. Repeat as necessary.

Roaches, Sowbugs, Boxelder Bugs, Centipedes, Earwigs, Crickets, Grain Mites and Spiders: Spray thoroughly into hiding places such as cracks, crevices, moist areas, openings around pipes and sinks, under refrigerators, baseboards and storage areas. Spray directly on insects where possible. Repeat as necessary.

STORAGE AND DISPOSAL

General: Do not contaminate water, food, or feed by use, storage, or disposal. If damaged or leaking, seal up and wrap waste, then dispose of as below.

Storage: Keep in a cool, dry, locked area away from flames, sparks, sunlight, or other sources of heat or ignition. Containers heated above 130°F (54°C) may burst.

Disposal: Refasten protective cap on container, securely wrap in several layers of newspaper and discard in trash. Do not incinerate or puncture.

NOTICE: Buyer assumes all risks of use, storage or handling of this product not in strict accordance with directions given herewith.



PM-17 192
**White Fly &
Mealy Bug
Killer**

BEST AVAILABLE COPY

For indoor & outdoor use

ALSO KILLS: Aphids and spider mites on the many listed plants. Contains a combination of two new highly active synthetic pyrethroid compounds.

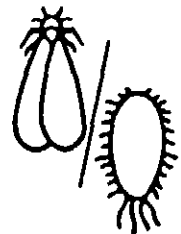
For control of residential, industrial and garden insect pests.

ACTIVE INGREDIENTS:

* Tetramethrin.....	0.250%
Related compounds.....	0.034%
** Resmethrin.....	0.250%
Related compounds.....	0.034%
Petroleum Distillate.....	8.800%

INERT INGREDIENTS..... 90.632%
100.000%

* 1-cyclohexene-1, 2-dicarboximidomethyl
2,2-dimethyl-3-(2-methylpropenyl)cyclopropanecarboxylate
** (5-Benzyl-3-furyl) methyl 2,2-dimethyl-
3-(2-methylpropenyl) cyclopropanecarboxylate. Cis/trans isomer content: Max. 30% (±)
cis and min. 70% (±) trans. U.S. Patent No. 3,465,007



**KEEP OUT OF REACH OF CHILDREN
CAUTION**

See rear panel for additional precautionary statements.

EPA EST. NO. 334-IL-2

EPA REG. NO. 5887-131

NET WEIGHT 14 OZ.

DISTRIBUTED BY

BLACK LEAF PRODUCTS, A Division of Wilbur-Ellis Co.

BUCKNER, KENTUCKY 40010

D-1289 Made in U.S.A.

Use in accordance with directions on label. Do not use if label is missing or if label has been changed in status.

A. ACTIVE INGREDIENTS

* Tetramethrin	0.250%
Related compounds	0.034%
** Resmethrin	0.250%
Related compounds	0.034%
Inert Ingredients	99.432%
Total	<u>100.000%</u>

- * 1-cyclohexene-1, 2-dicarboximidomethyl
2,2-dimethyl-3-(2-methylpropenyl)cyclo-
propanecarboxylate
- ** (5-Benzyl-3-furyl) methyl 2,2-dimethyl-
3-(2-methylpropenyl) cyclopropanecarboxyl-
ate. Cis/trans isomer content: Max 30%
(+-) cis and min. 70% (+-) trans. U.S.
Patent No. 3,465,007