



45%

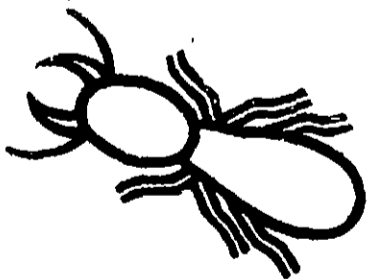
Chlordane

Termite Killer

For use around buildings

MAY 22 1981
Under the Federal Insecticide, Fungicide, and Rodenticide Act as amended, for the pesticide registered under EPA Reg. No. 5887-127

ACTIVE INGREDIENTS:
*Technical Chlordane ... 45.3%
Petroleum Distillate ... 49.7%
INERT INGREDIENTS ... 5.0%
TOTAL ... 100.0%
*Equivalent to 27.2% Octachloro-4, 7-methanotetrahydroindane and 18.1% related compounds. Contains 4.0 lbs. actual Chlordane per gallon



KEEP OUT OF REACH OF CHILDREN
CAUTION

SEE BOTTLE LABEL FOR STATEMENT OF PRACTICAL TREATMENT AND ADDITIONAL PRECAUTIONARY STATEMENTS

EPA. EST. NO. 5887-IL-1
EPA REG. NO. 5887-127
NET CONTENTS ONE-HALF GALLON

PRECAUTIONARY STATEMENTS HAZARDS TO HUMANS CAUTION

May be fatal if swallowed. Do not breathe vapor, dust, or spray mist. Do not get in eyes, on skin or clothing. In case of skin contact, wash immediately with soap and water. Avoid contamination of feed and foodstuffs.

ENVIRONMENTAL HAZARDS

This product is toxic to fish, birds and other wildlife. Birds feeding on treated areas may be killed. Keep out of lakes, streams and ponds. Do not apply where runoff is likely to occur. Do not apply when weather favors drift from treated areas. Do not contaminate water by cleaning of equipment or disposal of wastes. Apply this product only as specified on this label.

PHYSICAL OR CHEMICAL HAZARDS CAUTION

Do not use, pour, spill or store near heat or open flame.

STATEMENT OF PRACTICAL TREATMENT

IF SWALLOWED—Call a physician or Poison Control Center immediately. If possible, vomiting should be induced under medical supervision. Drink one or two glasses of water and induce vomiting by touching the back of throat with finger. Do not induce vomiting or give anything by mouth to an unconscious person.

IF INHALED—Remove victim to fresh air. Apply artificial respiration if indicated.

IF ON SKIN—Remove contaminated clothing and wash affected areas with soap and water.

IF IN EYES—Flush eyes with plenty of water. Call a physician immediately.

STORAGE AND DISPOSAL

STORAGE: Do not contaminate water, food or feed by storage or disposal.

CONTAINER DISPOSAL: Do not reuse empty container (bottle, can, bucket). Wrap container and put in trash collection.

NOTICE: Buyer assumes all risks of use, storage or handling of this material not in strict accordance with directions given here-with.

DISTRIBUTED BY
BLACK LEAF PRODUCTS COMPANY
ELGIN, ILLINOIS 60120
00-971

DIRECTIONS FOR USE

It is a violation of Federal law to use this product in a manner inconsistent with its labeling.

Use **BLACK LEAF 45% CHLORDANE TERMITE KILLER** in a 1.0% water emulsion. This 1.0% emulsion can be made by adding 1 quart of **BLACK LEAF 45% CHLORDANE TERMITE KILLER** to 12 gallons of water; 2 quarts to 24 gallons of water, etc. This proportional emulsion should be applied as follows:

TERMITE CONTROL IN EXISTING STRUCTURES

BUILDINGS HAVING BASEMENTS OR CRAWL SPACES: First remove all wood debris and wood forms. Around piers, pipes, chimney bases and along foundations of poured concrete dig a trench 6 inches wide and 4 inches deep. For brick and block foundations dig the trench about 12 inches deep. If footing is more than 12 inches deep, make holes with a crowbar, pipe or a rod about one foot apart that extend from the trench bottom to the footing. Make holes closer in hard-packed clay soils. Never dig below the top of the footing. Apply the solution in the trench at a rate of 4 gallons per 10 linear feet per foot of depth. Apply half of this to the back-fill. Likewise, treat along the inside of foundations of crawlspace buildings. Cover treated soil with a thin layer of untreated soil, and take care to avoid contaminating water supplies.

For raised porches, terraces, and entrance steps, dig holes at one foot intervals, 6 inches from the foundation, and pour one-half gallon of solution into each hole. Retill holes. Slabs with heat ducts or radiating heat pipes should be treated by professional pest control operators.

The object is to establish a treated soil barrier which will prevent termite entry. Other critical areas may also require treatment, particularly if there are inaccessible areas, basements or slab-type construction. It is suggested that you contact the Agricultural Cooperative Extension Service for advice or consult a Professional Pest Control Service.

Avoid contamination of public and private water supplies by following these precautions. Use anti-back-flow siphonage equipment. Refer to federal (Federal Housing Administration), state, and local specifications for safe distances of treatment areas from wells. Soil in the vicinity of wells should not be treated if it is water-saturated, or by injecting the solution under pressure. Soil should be removed to an area safe from well contamination, treated, and returned to the trench which has been lined with plastic sheeting.