

AREA CODE 312
697-4400

Black Leaf Products Company



White Fly & Mealy Bug Spray

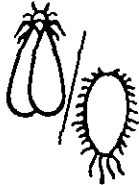
Ready to use
For indoor & outdoor use

Also kills aphids and spider mites on the many plants listed.

ACTIVE INGREDIENTS
13 Phosphorylcholine 12.0
Dimethoate 2.0
Other inert ingredients 86.0
NET WEIGHT 8 oz.

**KEEP OUT OF REACH OF CHILDREN
CAUTION**

See rear panel for additional precautionary statements
EPA EST. NO. 5887-IL-1
EPA REG. NO. 5887-126
Net Weight 8 oz.



PRECAUTIONARY STATEMENTS HAZARDS TO HUMANS AND DOMESTIC ANIMALS CAUTION

Harmful if swallowed. Avoid breathing vapors. Avoid contact with skin, eyes or clothing. Wash contaminated skin promptly with soap and warm water. For eyes, flush with water and get medical attention if irritation persists. Avoid contamination of food and feed stuffs. Do not use in commercial food processing, preparation, storage or serving areas. In the home, all food processing surfaces and utensils should be covered during treatment or thoroughly washed before use. Cover exposed food. Do not spray plants used for food or feed. Remove pets, birds and cover fish aquarium before spraying.

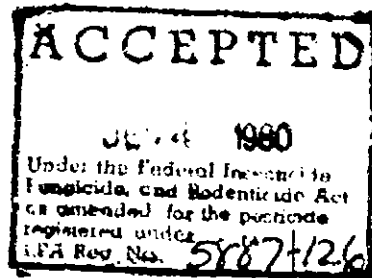
DIRECTIONS FOR USE

General Classification
It is a violation of Federal law to use this product in a manner inconsistent with its labeling.
For infestations of whiteflies, mealybugs, aphids, and spider mites on African Violet, geranium, azalea, fuchsia, coleus, petunia, chrysanthemum, begonia, ivy, philodendron, wandering Jew, schefflera, dracaena, jade, gloxinia, dieffenbachia, amaranth, aluminum plant, palm (dwarf & areca), purple heart, yew pine, piggyback, nerve, false aralia, Japanese false, golden pathos, and box leaf suonymus.
Shake well before using. Direct mist sprayer toward plant at a distance of approximately 12 inches, spray both upper and lower surfaces of plant foliage to point of runoff. Spray in late afternoon and at night only. Repeat as necessary.

DISPOSAL

Do not reuse empty container. Wrap container and put in trash collection.
NOTICE: Buyer assumes all risks of use, storage or handling of this product not in strict accordance with directions given hereon.

DISTRIBUTED BY
BLACK LEAF PRODUCTS CO.
ELGIN, ILLINOIS 60120



SINCE 1879

12

BEST DOCUMENT AVAILABLE