

WARNINGS: May be fatal if swallowed. Avoid breathing spray mist. Do not get in eyes, on skin, or on clothing. In case of contact, immediately flush eyes with plenty of water; for skin, wash with soap and water. Avoid contamination of food and feed. Avoid drift to adjoining food and forage crops.

Rinse spray equipment and containers. Bury liquid waste in non-crop lands located away from water supplies. Perforate empty metal containers.

WARNING: Do not re-use empty container. Destroy it by burying with waste or burning. Stay away from smoke or fumes.

COMBUSTIBLE: Keep away from heat or open flame.

NOTICE: Buyer assumes all risks of use, storage or handling of this material not in strict accordance with directions given herewith.

**DISTRIBUTED BY
BLACK LEAF PRODUCTS CO.
ELGIN, ILLINOIS 60120**

NET CONTENTS ONE QUART

Black Leaf

Chinch Bug Killer



WARNING
KEEP OUT OF THE REACH OF CHILDREN
See side panel for other warnings.
EPA REG.NO.5887-84

Contains Aspon

Controls Chinch Bugs on Ornamental Turf

Use BLACK LEAF with all caution.

BLACK LEAF on and ornamental plants

- (1) Wet
- (2) Mea
- (3) Use are to 5
- (4) A 1 chinch Kill wat
- (5) Do unti bee is d
- (6) Con Sta tim
- (7) Ava

When used 100 gallon feet of law

Jan-24-1972

WARNINGS: May be fatal if swallowed. Avoid breathing spray mist. Do not get in eyes, on skin, or on clothing. In case of contact, immediately flush eyes with plenty of water; for skin, wash with soap and water. Avoid contamination of food and feed. Avoid drift to adjoining food and forage crops.

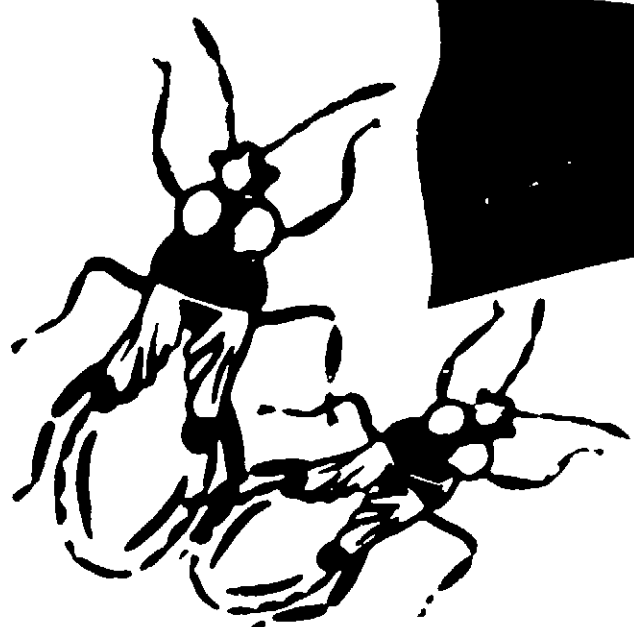
Rinse spray equipment and containers. Bury liquid waste in non-crop lands located away from water supplies. Perforate empty metal containers.

WARNING: Do not re-use empty container. Destroy it by burying with waste or burning. Stay away from smoke or fumes.

COMBUSTIBLE: Keep away from heat or open flame.

NOTICE: Buyer assumes all risks of use, storage or handling of this material not in strict accordance with directions given herewith.

**DISTRIBUTED BY
BLACK LEAF PRODUCTS CO.
ELGIN, ILLINOIS 60120**



Contains Aspon

WARNING

KEEP OUT OF THE REACH OF CHILDREN
See side panel for other warnings.

EPA REG NO. 5887-84

ACTIVE INGREDIENTS:

*O,O,O,O-Tetrapropyl Dithiopyrophosphate	25.67%
Xylene Range Aromatic Hydrocarbon Solvent	66.30%
INERT INGREDIENT	8.03%
	<u>100.00%</u>

Contents: 2 lb. Aspon per gallon
*Aspon is a registered trademark of Stauffer Chemical Company.

Use BLACK all cautions tion.

BLACK LEA and ornam

(1) Wet

(2) Mea

(3) Use

area

to 5

(4) A 1

chir

Kille

wat

(5) Do

unti

bee

is d

(6) Con

Stat

timi

(7) Avo

When used

100 gallon

feet of law

DIRECTIONS FOR USE

Use **BLACK LEAF CHINCH BUG KILLER** carefully, using all cautions shown on this label. Do not use without dilution.

BLACK LEAF CHINCH BUG KILLER can be used on lawn and ornamental turf as follows:

- (1) Wet lawn thoroughly.
- (2) Measure area to be sprayed.
- (3) Use one pint of **CHINCH BUG KILLER** to treat an area of 1500 square feet in a mixture of from 30 to 50 gallons of water.
- (4) A 100 square foot area can be protected from chinch bugs by using 1 ounce of Chinch Bug Killer (2 tablespoons) mixed in 2-3 gallons of water.
- (5) Do not allow children or pets in treated areas until all the spray applied to the surface has been washed into the soil and the lawn or turf is dry.
- (6) Consult State Agricultural Extension Service or State Agricultural Experiment Stations for the timing of applications for your region.
- (7) Avoid drift to adjoining food and forage crops.

When used as directed, this container will make up to 100 gallons of spray and will control up to 3000 square feet of lawn area.