

DANGER: EXTREMELY FLAMMABLE. KEEP AWAY FROM FIRE, SPARKS AND HEATED SURFACES.

CAUTION: Keep container tightly closed and away from heat and open flame. Store out of reach of children in cool area. Do not take or administer internally. Avoid breathing spray mist or contact with skin, eyes or clothing. Wash hands and contaminated clothing after use. Do not smoke while applying. Remove residue on edible fruit by wiping or washing before canning or eating. Avoid contamination of foodstuffs or feed.

Harmful if swallowed or inhaled.

Avoid contamination of feeding troughs and water receptacles of pets or animals, outdoor fish ponds, streams and water supplies.

WARNING: Malathion may injure foliage of some varieties of apples, cherries, and grapes as well as Bosc pears in Northeastern United States.

This product is highly toxic to bees exposed to direct treatment or residues on crops. Protective information may be obtained from your Cooperative Agricultural Extension Service.

This product is toxic to fish. Keep out of lakes, streams or ponds. Do not contaminate water by cleaning of equipment or disposal of wastes. Apply this product only as specified on label.

Do not reuse empty container. Destroy it by perforating or crushing. Bury or discard in a safe place.

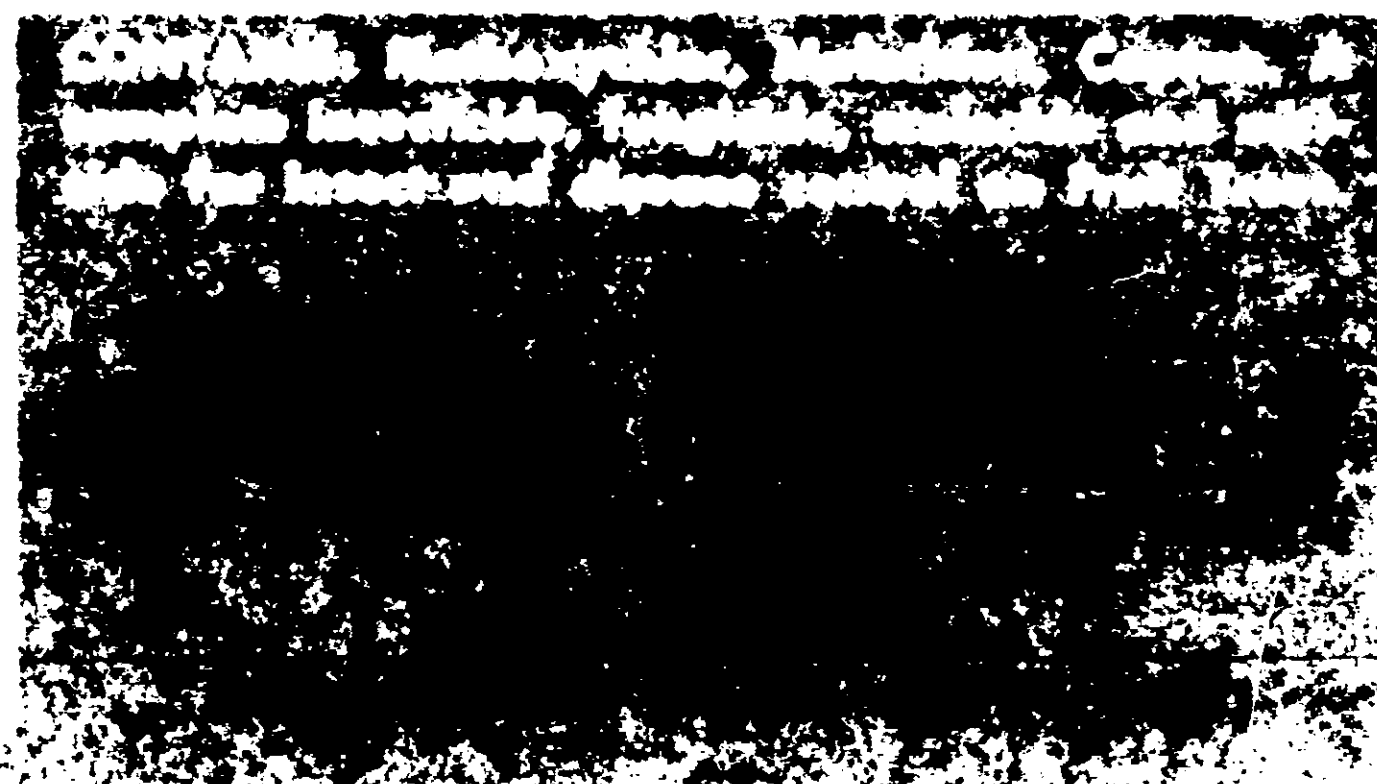
NOTICE. Buyer assumes all risks of use, storage, or handling of this product not in strict accordance with directions given herewith.

DISTRIBUTED BY
BLACK LEAF PRODUCTS COMPANY
ELGIN, ILLINOIS 60120
00-321

Black
Leaf

Liquid Fruit Tree Spray

controls insects and diseases



DIRECTIONS FOR USE

SHAKE PRODUCT THOROUGHLY BEFORE USING. Choose a cool, calm period when trees will not be subjected to hot direct rays of the sun. It is easier to prevent disease and scale damage than to cure same, therefore a preventative 10-14 day spray schedule is recommended. When insects are present, use maximum dilution. When active disease spores are present (warm, humid days) shorten spray intervals to 5-7 days at maximum dilution. Apply spray to leaves, fruit, branches, trunk and base of tree until lightly dripping. Shake sprayer occasionally or agitate to keep spray particles in suspension during application. Follow spray schedule given below in kitchen tablespoons per gallon of water.

INSECTS: aphids, apple maggot, bagworm, bud moth, cherry fruit fly and worm, codling moth, plum curculio, flea beetles, fruit tree leaf roller, European spruce sawfly, Japanese beetle, leaf hoppers, mealy bugs, mites (clover, European red, two spotted and Williamette), oriental fruit moth, pear slug, sawfly, red banded leaf roller, scale (Forbes, Putnam, San Jose), spider bug, tent caterpillars, yellow neck caterpillar.

DISEASES: bitter rot, black rot, blossom blight, Botryosphaeria rot, botrytis blossom end rot, Brooks fruit spot, brown rot, cornucopia blight, downy mildew, fly speck, frog eye, fruit rot, leaf spot, scab, and sooty blotch.

TREE STAGE	APPLE	CHERRY	GRAPE	PEACH	PEAR*	PLUM/PRUNE
Dormant	Use Black Leaf Dormant Spray up to 7 days before green tip application.					
Green Tip	1 1/2 Tbs.	1 1/2 Tbs.	1 1/2 Tbs.	1 1/2 Tbs.	1 1/2 Tbs.	1 1/2 Tbs.
Pre-Bloom	2 1/2 Tbs.	1 1/2 Tbs.	2 1/2 Tbs.	1 1/2 Tbs.	2 1/2 Tbs.	1 1/2 Tbs.
Full Pink	2 1/2 Tbs.	2 1/2 Tbs.	2 1/2 Tbs.	2 1/2 Tbs.	2 1/2 Tbs.	2 1/2 Tbs.
Bloom	Don't spray pollinators. Fungicide alone may be applied for disease.					
Petal Fall	2 1/2 Tbs.	2 1/2 Tbs.	2 1/2 Tbs.	2 1/2 Tbs.	2 1/2 Tbs.	2 1/2 Tbs.
1st Cover	2 1/2 Tbs.	2 1/2 Tbs.	2 1/2 Tbs.	2 1/2 Tbs.	2 1/2 Tbs.	2 1/2 Tbs.
2nd to Harvest	2 1/2 Tbs.	2 1/2 Tbs.	2 1/2 Tbs.	2 1/2 Tbs.	2 1/2 Tbs.	2 1/2 Tbs.
Stop Spraying	14 days before harvest of apple, cherry and grape; 21 days peaches; 7 days pears, plums/prunes					
Post Harvest	1 1/2 Tbs.	1 1/2 Tbs.	1 1/2 Tbs.	2 1/2 Tbs.	1 1/2 Tbs.	2 1/2 Tbs.

2 tablespoons = 1 ounce = 1/128 gallon

Pears*—Russeting may be induced on Bosc pears, do not use on D'Anjou pears.

Definition of terms: Dormant—absence of growth fall, winter or spring. Green Tip—when branch tips show green tissue. Pre-bloom—when blossom buds begin to show color. Full pink—when blossom buds shows full color before opening. Bloom—when blossoms are open. Petal fall—when last petals have fallen from blossom. 1st cover—7-10 days after petal fall. 2nd cover to cut off date before harvest—10-14 day intervals. Post harvest—to leaf drop.

MAGENTA

BLACK

NEW

ACCEPTED

NOV 8 1972

UNDER THE FEDERAL INSECT
FUNGICIDE AND RODENTICIDE ACT
FOR ECONOMIC PEST CONTROL
ED UNDER NO. 100-100000
TO ATTACHED COMMENTS.

5887-77

ing troughs and water
als, outdoor fish ponds,

injure foliage of some
s, and grapes as well as
United States.

ic to bees exposed to
es on crops. Protective
d from your Cooperative
ce.

sh. Keep out of lakes,
contaminate water by
posal of wastes. Apply
ed on label.

er. Destroy it by perfo-
discard in a safe place.
risks of use, storage, or
ot in strict accordance
with.

ED BY
CTS COMPANY
IS 60120
21

controls insects and diseases

CAUTION
KEEP OUT OF THE
REACH OF CHILDREN
See side panel for other cautions

ACTIVE INGREDIENTS:
Captan (3,3-dichloromethyl-4-hydroxy-1,3,5-trimethyl-2-pyridinylmethylthio) 12.0%
1-cyano-2,2-bis(4-chlorophenyl)ethane 6.0%
Malathion (O,O-dimethyl phosphorothioate of diethyl mercaptosuccinate) 12.0%
Methoxychlor, technical 0.3%
Carbaryl (1-carbaryl 2-methylcarbamate) 36.5%
Aromatic Petroleum Derivative Solvent 33.2%
INERT INGREDIENTS: 33.2%
TOTAL 100.0%
*Equivalent to 10.56% 2,2-bis (p-methoxyphenyl)-1,1,1-trichloroethane and 1.44% or other isomers and related compounds.
**Savin is a Reg. TM of Union Carbide.

EPA REG.NO.5887-77-AA
NET CONTENTS 16 FL. OZ. (1 PINT)

MAGENTA

BLACK

leaf miner, scale (robes, Fulham, San Jose), spittle
yellow neck caterpillar.

DISEASES: bitter rot, black rot, blossom blight, Botrytis
blossom end rot, Brooks fruit spot, brown rot, cornyeum
fly speck, frog eye, fruit rot, leaf spot, scab, and sooty blo

TREE STAGE	APPLE	CHERRY	GRAPE	PEACH
Dormant	Use Black Leaf Dormant Spray up to 7 days before			
Green Tip	1 1/2 Tbs.	1 1/2 Tbs.	1 1/2 Tbs.	1 1/2 Tbs.
Pre-Bloom	2 1/2 Tbs.	1 1/2 Tbs.	2 1/2 Tbs.	1 1/2 Tbs.
Full Pink	2 1/2 Tbs.	2 1/2 Tbs.	2 1/2 Tbs.	2 1/2 Tbs.
Bloom	Don't spray pollinators. Fungicide alone may l			
Petal Fall	2 1/2 Tbs.	2 1/2 Tbs.	2 1/2 Tbs.	2 1/2 Tbs.
1st Cover	2 1/2 Tbs.	2 1/2 Tbs.	2 1/2 Tbs.	2 1/2 Tbs.
2nd to Harvest	2 1/2 Tbs.	2 1/2 Tbs.	2 1/2 Tbs.	2 1/2 Tbs.
Stop Spraying	14 days before harvest of apple, cherry and 7 days pears, plums/prunes			
Post Harvest	1 1/2 Tbs.	1 1/2 Tbs.	1 1/2 Tbs.	2 1/2 Tbs.

2 tablespoons 1 ounce - 1/128

Pears*—Russeting may be induced on Bosc pears, do not
Definition of terms: Dormant—absence of growth fall, winter
when branch tips show green tissue. Pre-bloom—when bloss
color. Full pink—when blossom buds shows full color before
blossoms are open. Petal fall—when last petals have fallen f
—7-10 days after petal fall. 2nd cover to cut off date befo
Intervals. Post harvest—to leaf drop.

NEW

ACCEPTED WITH COMMENTS

ACCEPTED

NOV 8 1972