

This formulation gives rapid kill of such crawling insects as listed below, including those resistant to certain chlorinated hydrocarbon and phosphate insecticides. Spray residues kill insects weeks after the spray deposit has dried.

- |                 |                        |
|-----------------|------------------------|
| Ants            | Roaches                |
| Brown Dog Ticks | Saw-Toothed Grain      |
| Clover Mites    | Beetle (exposed stage) |
| Crickets        | Scorpions              |
| Earwigs         | Silverfish             |
| Fleas           | Sowbugs                |
| Millipedes      | Spiders                |

**DIRECTIONS FOR USE**

**General:** Spray surfaces to wetting. Point spray away from people, plants and pets. *Spray only on surfaces. Do Not Use as a Space Spray.*

**Indoor Use:** ANTS, COCKROACHES, CRICKETS, SILVERFISH, SPIDERS, SCORPIONS, SAW-TOOTHED GRAIN BEETLES (EXPOSED STAGE), WATERBUGS: Spray into cracks, crevices, around baseboards, and other places where these insects hide. Apply behind and beneath cabinets, refrigerators, sinks, stoves and in and around waste containers. Repeat as needed. Do not spray foodstuffs or house-plants. For ants, spray trails and places where ants enter premises. Do not allow children to contact treated surfaces until surfaces are completely dry.

**BROWN DOG TICKS:** Spray sleeping quarters of pets, around baseboards, window and door frames, wall cracks, and local areas of floors. Repeat as needed. Fresh bedding should be placed in animal quarters after spraying. Do not spray animals.

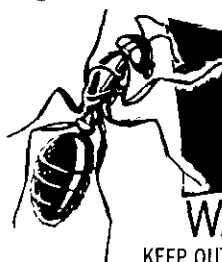
**Outdoor Use:** ANTS, CLOVER MITES, CRICKETS, EARWIGS, FLEAS, MILLIPEDES, SOWBUGS, AND BROWN DOG TICKS: Spray infested areas thoroughly including outside surfaces of screens, doors, window frames, foundations, patios, or other places where insects enter. For ants, spray hills and runways. Repeat as necessary. Do not spray vegetation.



# Roach & Ant killer



**INSECT BOMB PRESSURIZED**



**KILLS HOUSEHOLD AND OUTDOOR CRAWLING INSECTS** such as: ROACHES, ANTS, SPIDERS, SILVERFISH, WATERBUGS, SCORPIONS, FLEAS, CRICKETS, MILLIPEDES, and certain other crawling insects.

**WARNING:**

KEEP OUT OF REACH OF CHILDREN  
CONTENTS UNDER PRESSURE  
See rear panel for further precautionary labeling.

NET WT. 12 OZS. (3/4 LB.)

U.S.D.A. REG. NO. 5887-76

**WARNING:**  
**KEEP OUT OF REACH OF CHILDREN**  
May be harmful if swallowed, inhaled, or absorbed through the skin. Avoid breathing of spray mist and provide adequate ventilation of area being treated. Contact with skin, eyes, or clothing should also be avoided. Wash thoroughly with soap and warm water after handling. Avoid contamination of food, utensils, and food preparation areas.  
Remove pets and cover fish bowls before spraying. If poisoning occurs, get prompt medical aid.  
To Physician—Atropine sulfate is antidotal.  
**FLAMMABLE.** Do not spray into or near open flame. Do not smoke while using.  
**CONTENTS UNDER PRESSURE.** Keep container away from stoves, radiators, or other hot surfaces. Temperatures exceeding 120°F. may cause the container to burst. Do not puncture or incinerate.  
Avoid excessive wetting of plastic, rubber and asphalt surfaces such as tiles and floor covering.  
Do not use in edible product areas of food processing plants, restaurants or other areas where food is commercially prepared or processed. Do not use in serving areas while food is exposed.

<b>ACTIVE INGREDIENTS</b> .....	85.516%
Pyrethrins .....	.050%
* Piperonyl Butoxide, Technical .....	.100%
N-Octyl Bicycloheptene Dicarboximide .....	.166%
** o-Isopropoxyphenyl Methylcarbamate .....	.500%
Petroleum Distillate .....	84.700%
<b>INERT INGREDIENTS</b> .....	14.484%
Total .....	100.000%
*Consists of .08% (butylcarbityl) (6-propylpiperonyl) ether and .02% related compounds.	
**Baygon, U.S. Patent No. 3,111,539.	

DISTRIBUTED BY  
**BLACK LEAF PRODUCTS CO.**  
ELGIN, ILLINOIS 60120

5887-76  
8/6/71

OST. BLACK LEAF PROD. DESIGN ROACH + ANT KILLER 12oz.  
NG. 1424-1 S.O. 242-11203 SIZE 2 1/4 X 6 1/4 C.E. B.465 X 6.375 B.P. PL-1659 DATE 3-15-71

BEFORE SIGNING Customer agrees that (1) Continental Can Company, Inc. shall not be liable for (a) any error in the attached unless this proof is returned to Continental with such error plainly noted in writing, (b) the use of any part of the attached to comply with any local, state or Federal law or regulation, (c) any part of the attached which infringes the property rights of others acquired, without limitation thereof, by usage, registration, copyright, letters patent or otherwise and (d) production colors not being exactly the same as the hand proved colors, if any, in the attached, although Continental will duplicate the colors as closely as possible. (2) Customer shall indemnify and hold Continental harmless against the liability described in (1) above, including attorney fees and court costs or for consequential damages, and (3) the liability of Continental for uncorrected errors plainly noted in the attached shall not exceed the actual cost of the containers bearing the noted error. Changes increase costs and delay production. CONTINENTAL CAN COMPANY, INC.

CHANGE AS DETAILED <input type="checkbox"/>	APPROVED AS SUBMITTED <input type="checkbox"/>	CUSTOMER SIGNATURE: _____	DATE _____
---	--	---------------------------	------------

NO. PROOFS 10	ARTIST <i>[Signature]</i>
PROOF DATE 7-16-71 <sup>CHANGE C</sup>	
CHANGE #E	
CHANGE B	

172

