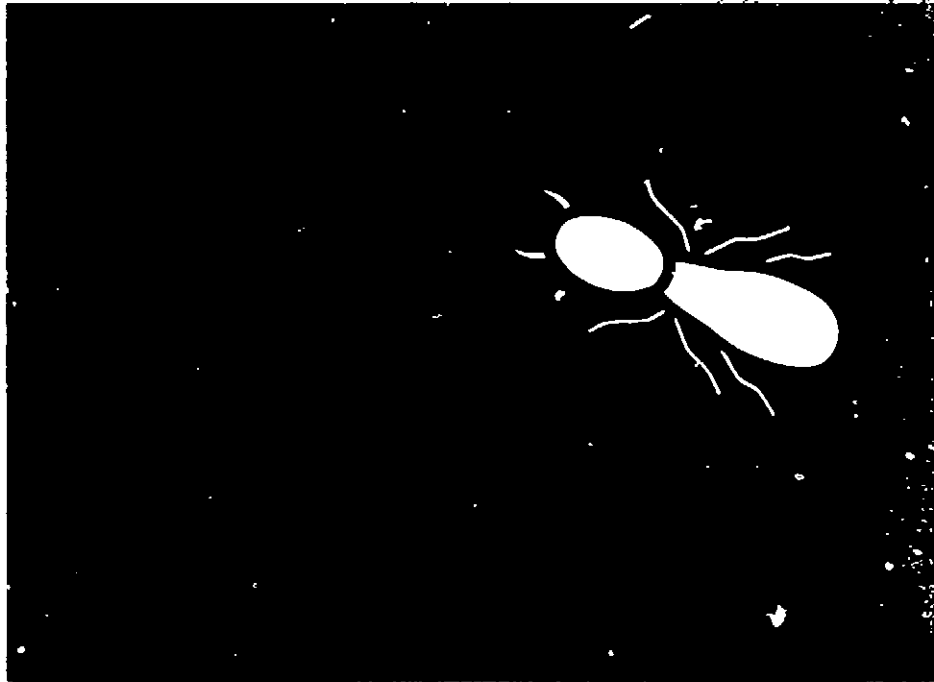


Black Leaf 72%
Chlordane
Termite Control

For use around buildings



**PRECAUTIONARY STATEMENTS
 HAZARDS TO HUMANS
 AND DOMESTIC ANIMALS**

WARNING
 May be fatal if swallowed. Do not breathe vapor, dust, or spray mist. Do not get in eyes, on skin or clothing. In case of skin contact, wash immediately with soap and water. Avoid contamination of feed and foodstuffs.

ENVIRONMENTAL HAZARDS
 This product is toxic to fish, birds, and other wildlife. Keep out of lakes, streams and ponds. Do not contaminate water by cleaning of equipment or disposal of wastes. Apply this product only as specified on this label.

PHYSICAL OR CHEMICAL HAZARDS
 Do not use, pour, spill or store near heat or open flame.

STATEMENT OF PRACTICAL TREATMENT

IF SWALLOWED—Call a physician or Poison Control Center immediately. Drink one or two glasses of water and induce vomiting by touching the back of throat with finger. If possible, vomiting should be induced under medical supervision. DO NOT induce vomiting or give anything by mouth to an unconscious person.

IF INHALED—Remove victim to fresh air. Apply artificial respiration if indicated.

IF ON SKIN—Remove contaminated clothing and wash affected areas with soap and water.

IF IN EYES—Flush eyes with plenty of water. Get medical attention immediately.

DISPOSAL

Do not reuse empty container. Wrap container and put in trash collection. This package will make up to 48 gallons of 1.0% emulsion.

NOTICE: Buyer assumes all risks of use, storage or handling of this material not in strict accordance with directions given herewith.

DISTRIBUTED BY
BLACK LEAF PRODUCTS COMPANY
 ELGIN, ILLINOIS 60120
 823

DIRT

It is a violation of Federal law to use this product in accordance with its labeling.

SUBTERRANEAN TERMITE CONTROL

Use BLACK LEAF 72% CHLORDANE water emulsion. This 1.0% emulsion should be applied as follows:
BASEMENTS OR CRAWL SPACES—Use BLACK LEAF 72% CHLORDANE water; 1 quart to 24 gallons should be applied as follows:
 For brick and block foundation footing is more than 12 inches deep, a rod about one foot apart from top of the footing. Make holes 6 inches below the top of the footing in the trench at a rate of foundations of crawl-space layer of untreated soil.

For raised porches, terraces, intervals, 6 inches from the emulsion (or solution) into or radiating heat pipes show operator.

The object is to establish a barrier to termite entry. Other critical areas are suggested that you contact your local Health Department for advice or consultation. Avoid contamination of public places. Do not allow these precautions. Do not allow to reach into the termite chamber material with water. Use on all filling equipment. The or plumbing supply stores, equipment will help to insure not contaminate domestic (Housing Administration), distances of treatment areas, cisterns or ponds should not be treated around the perimeter surrounding yard or property follows: Do Not Apply Under area safe from well or domestic stand undisturbed for termite which has been lined with plastic puncture the plastic sheeting treat structures that contain

**PRECAUTIONARY STATEMENTS
HAZARDS TO HUMANS
AND DOMESTIC ANIMALS**

WARNING

May be fatal if swallowed. Do not breathe vapor, dust, or spray mist. Do not get in eyes, on skin or clothing. In case of skin contact, wash immediately with soap and water. Avoid contamination of feed and foodstuffs.

ENVIRONMENTAL HAZARDS

This product is toxic to fish, birds, and other wildlife. Keep out of lakes, streams and ponds. Do not contaminate water by cleaning of equipment or disposal of wastes. Apply this product only as specified on this label.

PHYSICAL OR CHEMICAL HAZARDS

Do not use, pour, spill or store near heat or open flame.

**STATEMENT OF PRACTICAL
TREATMENT**

IF SWALLOWED—Call a physician or Poison Control Center immediately. Drink one or two glasses of water and induce vomiting by touching the back of throat with finger. If possible, vomiting should be induced under medical supervision. DO NOT induce vomiting or give anything by mouth to an unconscious person.

IF INHALED—Remove victim to fresh air. Apply artificial respiration if indicated.

IF ON SKIN—Remove contaminated clothing and wash affected areas with soap and water.

IF IN EYES—Flush eyes with plenty of water. Get medical attention immediately.

DISPOSAL

Do not reuse empty container. Wrap container and put in trash collection. This package will make up to 48 gallons of 1.0% emulsion.

NOTICE: Buyer assumes all risks of use, storage or handling of this material not in strict accordance with directions given herewith.

**DISTRIBUTED BY
BLACK LEAF PRODUCTS COMPANY
ELGIN, ILLINOIS 60120
823**

DIRECTIONS FOR USE

It is a violation of Federal law to use this product in a manner inconsistent with its labeling.

SUBTERRANEAN TERMITES - DIRECTIONS FOR HOMEOWNER USE.

Use **BLACK LEAF 72% CHLORDANE TERMITE CONTROL** in a 1.0% water emulsion. This 1.0% emulsion can be made by adding 1 pint of **BLACK LEAF 72% CHLORDANE TERMITE CONTROL** to 12 gallons of water; 1 quart to 24 gallons of water, etc. This proportional emulsion should be applied as follows:

TERMITE CONTROL IN EXISTING STRUCTURES BUILDINGS HAVING BASEMENTS OR CRAWL SPACES: First remove all wood debris and wood forms. Around piers, pipes, chimney bases and along foundations of poured concrete dig a trench 6 inches wide and 4 inches deep. For brick and block foundations dig the trench about 12 inches deep. If footing is more than 12 inches deep, make holes with a crowbar, pipe or a rod about one foot apart that extends from the trench bottom to the top of the footing. Make holes closer in hard-packed clay soils. NEVER DIG BELOW THE TOP OF THE FOOTING. Apply the emulsion (or solution) in the trench at a rate of 4 gallons per 10 linear feet per foot of depth. Apply half of this to the back-fill. Likewise, treat along the inside of foundations of crawl-space buildings. Cover treated soil with a thin layer of untreated soil.

For raised porches, terraces, and entrance slabs, drill holes at one foot intervals, 6 inches from the foundation, and pour one-half gallon of emulsion (or solution) into each hole. Refill holes. Slabs with heat ducts or radiating heat pipes should be treated by commercial pest control operator.

The object is to establish a treated soil barrier which will prevent termite entry. Other critical areas may also require treatment, particularly if there are inaccessible areas, basements or slab-type construction. It is suggested that you contact the Agricultural Cooperative Extension Service for advice or consult a Commercial Pest Control Service.

Avoid contamination of public and private water supplies by following these precautions. Do not allow a hose or any type of faucet extension to reach into the termite chemical solution while filling or mixing this material with water. Use anti-back-flow or anti-siphonage equipment on all filling equipment. These devices can be purchased at hardware or plumbing supply stores. Use of anti-back-flow or anti-siphonage equipment will help to insure that the user of this toxic chemical will not contaminate domestic water supplies. Refer to Federal (Federal Housing Administration), state, and local specifications for safe distances of treatment areas from wells. Soil in the vicinity of wells, cisterns or ponds should not be treated if it is water saturated, subject to excessive saturation due to an accumulation of water or if the soil to be treated around the perimeter of the structure is at a grade lower than surrounding yard or property area. If this is the situation treat as follows: Do Not Apply Under Pressure. Soil should be removed to an area safe from well or domestic water contamination, treated, allowed to stand undisturbed for two to four hours then returned to the trench which has been lined with 4 mil. plastic sheeting. Be careful not to puncture the plastic sheeting when returning soil to the trench. Do not treat structures that contain cisterns or wells.

120982