

Giant Roach Traps



2 TRAPS FOR 

Giant Roach Traps



HOW TO USE BLACK LEAF GIANT ROACH TRAPS
 Apply pressure with the tip of a knife, spoon or similar instrument to the indented sections on the sides of the container (SEE ILLUSTRATION.) Place trap where you have noticed the infestation of roaches. For greater, speedier effectiveness use several traps in the kitchen under sink or refrigerator, bathroom, or near pipes and baseboards.

EFFECTIVE • CLEAN • ECONOMICAL

COMO USAR BLACK LEAF LA TRAMPA DE CUCARACHAS
 Aplique presión con la punta de un cuchillo una cuchara, u otro implemento similar, a las secciones dentadas en los lados del envase (Vea la Ilustración.) Coloque la trampa donde usted ha notado la infestación de cucarachas. Para mayor efectividad más rápidos, use varias trampas en la cocina debajo de fregadero o refrigerador, en el baño o cerca de tubería y zócalos.

EFFECTIVO • LIMPIO • ECONOMICO

GRANULAR FORMULA

FOR BEST RESULTS CHECK TRAPS REGULARLY. CHANGE EVERY SIX WEEKS OR AS OFTEN AS NEEDED.

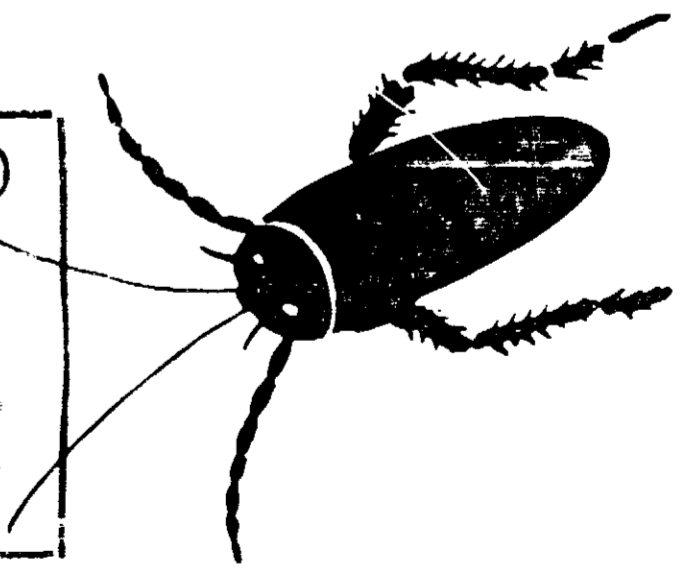
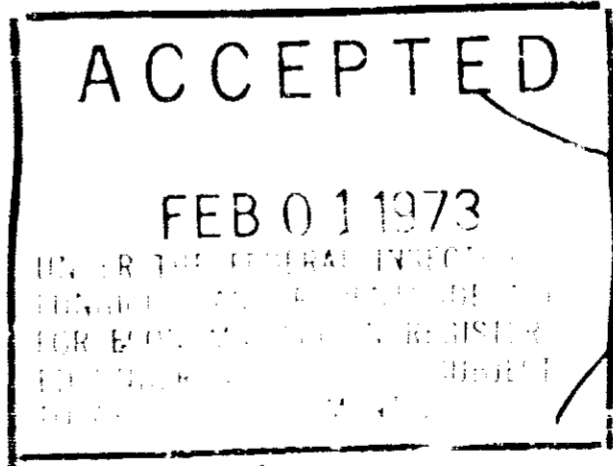
FOR USE IN

HOMES • STORES • WAREHOUSES

WARNING: Contents hazardous if swallowed or absorbed through the skin. Do not get on skin, in eyes, or on clothing. Wash with soap and water after using. Do not contaminate food or foodstuffs. Do not use in edible products areas of food processing plants, restaurants or other areas where food is commercially prepared or processed. Place bait boxes (traps) in areas inaccessible to children and pets.

AVISO: Contenido dañino si tragado o absorbido por la piel. No ponga en contacto con la piel, los ojos, o con la ropa. Lave con jabon y agua después de usar. No contamine el alimento o comestibles. No use en áreas de productos comestibles de las plantas para procesar alimentos, restaurantes y otras áreas donde alimentos son preparados o procesados comercialmente. Ponga cajas de carnada (trampa) en áreas inaccesible para niños y animales domésticos.

NOTICE: Buyer assumes all risks of use, storage or handling of this material not in strict accordance with directions given herewith.



KILLS ROACHES

EPA REG. NO. 5887-65-AA U. S. PATENT NO. 3,111,538 CANADIAN PATENT NO. 725,204

DISTRIBUTED BY: BLACK LEAF PRODUCTS CO., ELGIN, ILL. 60120