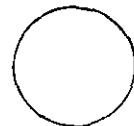




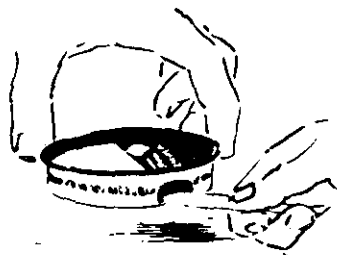
# Giant Roach Traps



2 TRAPS FOR



# Giant Roach Traps



**HOW TO USE BLACK LEAF GIANT ROACH TRAPS**  
Apply pressure with the tip of a knife, spoon or similar instrument to the indented sections on the sides of the container. (SEE ILLUSTRATION.) Place trap where you have noticed the infestation of roaches. For greater, speedier effectiveness use several traps in the kitchen under sink or refrigerator, bathroom, or near pipes and baseboards.

**EFFECTIVE      CLEAN      ECONOMICAL**

**COMO USAR BLACK LEAF LA TRAMPA DE CUCARACHAS**  
Aplicue presión con la punta de un cuchillo, una cuchara, u otro implemento similar, hasta producir una apertura. (Vea la ilustración.) Coloque la trampa donde usted ha notado la infestación de cucarachas. Para mayor efectividad y rapidez, use varias trampas en la cocina debajo de fregadero y

refrigerador, en

el baño o cerca de tubería y zocalos.

**EFFECTIVO      LIMPIO      ECONOMICO**

## GRANULAR FORMULA

FOR BEST RESULTS CHECK TRAPS REGULARLY. CHANGE EVERY SIX WEEKS OR AS OFTEN AS NEEDED.

FOR USE IN

## HOMES • STORES • WAREHOUSES

### WARNING:

Contents hazardous if swallowed or absorbed through the skin. Do not get on skin, in eyes, or on clothing. Wash with soap and water after using. Do not contaminate food or foodstuffs. Do not use in edible products areas of food processing plants, restaurants or other areas where food is commercially prepared or processed. Place bait boxes (traps) in areas inaccessible to children and pets.

**CUIDADO:** Contenido en peligro si tragado o absorbado por la piel. No cojen contacto en la piel, los ojos, o en la ropas. Lave con jabón y agua despues de usar. No Vajón a contaminar comidas y cosas de comir. No use en area de productos comestible en procedimiento de plantas, restaurantes y otra areas donde comidas es comercialmente prepadado o proceso. Ponga cajas de anzuelo (trampa) en areas inaccesible para niños y animal domestico.

**NOTICE:** Buyer assumes all risks of use, storage or handling of this material not in strict accordance with directions given herewith.

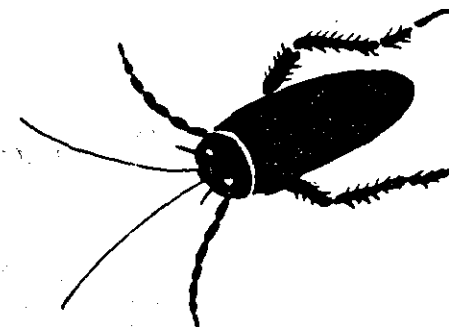
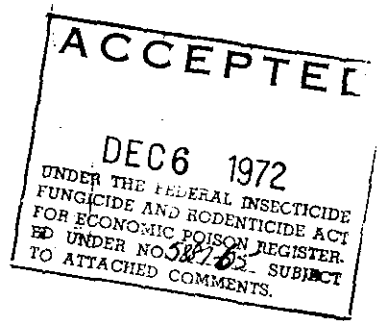
EPA REG. NO. 5887-65-AA

U. S. PATENT NO. 3,111,538  
CANADIAN PATENT NO. 725,204

DISTRIBUTED BY: BLACK LEAF PRODUCTS CO., ELGIN, ILL. 60120

Made and Printed in U.S.A.

00-745



# KILLS ROACHES

5887-65

12-6-72

1973

1  
2  
3  
4  
5  
6  
7  
8  
9  
10  
11  
12  
13  
14  
15  
16  
17  
18  
19  
20  
21  
22  
23  
24  
25  
26  
27  
28  
29  
30  
31  
32  
33  
34  
35  
36  
37  
38  
39  
40  
41  
42  
43  
44  
45  
46  
47  
48  
49  
50

**BIG**  
**leaf**

**GIANT**  
**roach**  
**traps**

ACTIVE INGREDIENT:  
Dihydrodiphenyl methylcarbamate 2.00%

INERT INGREDIENTS: TOTAL 98.00%

U.S. PATENT 2,311,538 100.00%

CANADIAN PATENT 775,724

USDA Reg. No. 587-67



**WARNING: KEEP OUT OF REACH OF CHILDREN**  
See other side for other cautions

