

1-10-7



**Black  
Leaf**

**ACTIVE INGREDIENTS:**

**Malathion\*** ..... **50%**  
**Xylene** ..... **42%**

**INERT INGREDIENTS** ..... **8%**  
**Total** ..... **100%**

\*O, O-dimethyl dithiophosphate of diethyl mercaptosuccinate

DISTRIBUTED BY

**BLACK LEAF PRODUCTS CO.**

CHICAGO, ILLINOIS U.S.A.

**garden and mosquito spray**



DIRECTIONS FOR USE OF BLACK LEAF GARDEN AND MOSQUITO SPRAY  
Read entire label and use strictly in accordance with directions and directions. Do not store diluted spray. Make new solution for each use.

USE	INSECTS	CONTROL
<b>Ornamentals</b> Roses Carnations Evergreens Mums Azaleas	Lace bugs, Aphids, Mealy bugs, Spider mites, White flies, Japanese beetle adults, Birch leaf miners, Bagworms, Tent caterpillars, Scale	Mix 1 tablespoon in each gallon of water to be sprayed. Spray plants thoroughly. Repeat as necessary. For scale apply when crawlers are settled in foliage.
<b>Fruits</b> Apples Cherries Apricots Pears Peaches	Woolly apple aphid, Green apple aphid, Rosy apple aphid, Mealybug, Clover mite, Codling moth, Plum Curculio, Tent caterpillars, Forbes scale, Leaf rollers, Peach aphid, Japanese beetle	Mix 1 tablespoon in each gallon of water to be sprayed. Thoroughly cover leaves and branches. Repeat as necessary. Do not apply within days of harvest on apples, cherries and pears and within 7 days for peaches and apricots.
<b>Vegetables</b> Beans Celery Cucumbers Cabbage Melons	Aphids, Cucumber beetles, Thrips, Leafhoppers, Spider mites, Japanese beetles, Imported cabbage worms, Pickleworms	Mix 1 tablespoon in each gallon of water to be sprayed. Thoroughly cover entire plant with spray. Repeat as necessary. Do not apply within 7 days of harvest on beans, cucumbers and melons and 7 days for cabbage and celery.
<b>Household</b>	Ants, Roaches, Carpet beetles, Silverfish, Spiders, Rode weevils, Flea beetles  Bedbugs	Mix 1 tablespoon in each gallon of water to be sprayed and apply in cracks and crevices with a brush to areas frequented by pests. Avoid contamination of food.  Use 1 tablespoon to a gallon of deodorized kerosene. Apply lightly to mattress, surfaces and generously to bed frames. Wet all possible hiding places. Repeat as necessary.
<b>Mosquito Control</b> Outdoors	Flies, Mosquitoes, Flea beetles	Mix 2 ounces in each gallon of water to be sprayed. Apply in fogging or fine spray equipment. Repeat as often as necessary.
Indoors	Flies, Mosquitoes, Flea beetles	Mix 2 ounces in each gallon of water. Close doors and windows of room. Keep sprayed for at least 30 minutes. Sweep up later pests. Repeat as necessary. Do not contaminate food, or kitchen utensils. Remove pots, pans and fish bowls from area to be sprayed.

When used as directed this bottle will make up to 1 gallon of spray.

770 7  
UNDER THE FEDERAL INSECTICIDE  
FUNGICIDE AND RODENTICIDE ACT  
FOR ECONOMIC PEACE REGISTERED  
ED UNDER NO. 5887-10 SUBJECT  
TO ATTACHED COMMENTS

**Black  
Leaf**

# malathion spray

## ACTIVE INGREDIENTS:

**Malathion\*** ..... **50%**

**Xylene** ..... **42%**

**INERT INGREDIENTS** **8%**

**Total** **100%**

\*O, O-dimethyl dithiophosphate of diethyl mercaptosuc-  
cinate

DISTRIBUTED BY

**BLACK LEAF PRODUCTS CO.**

CHICAGO, ILLINOIS U.S.A

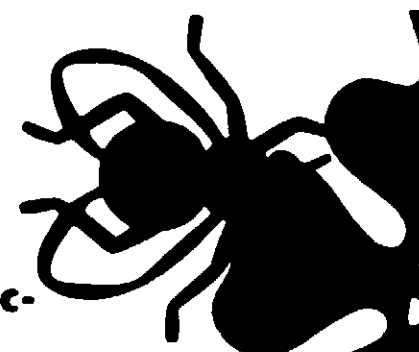
garden and mosquito spray

protects flowers and ornamental  
shrubbery; mosquito spray

## CAUTION:

**KEEP OUT OF THE  
REACH OF CHILDREN**

USDA REG. NO. 5887-10.  
See side panel for other cautions



27

**DIRECTIONS FOR USE OF BLACK LEAF 50% MALATHION SPRAY**  
 Read entire label and use strictly in accordance with cautions and directions. Do not store diluted spray—make new dilution for each use.

USE	INSECTS	CONTROL
<u>Ornamentals</u> Roses Carnations Evergreens Mums Azaleas	Lace bugs, Aphids, Mealybugs, Spider mites, Whiteflies, Japanese beetle adults, Birch leaf miners, Bagworms, Tent caterpillars, Scale.	Mix 1 tablespoon in each gallon of water to be sprayed. Spray plants thoroughly. Repeat as necessary. For scale, apply when crawlers have settled in foliage.
<u>Fruits</u> Apples Cherries Apricots Pears Peaches	Woolly apple aphid, Green apple aphid, Rosy apple aphid, Mealybug, Clover mite, Codling moth, Plum Curculio, Tent caterpillars, Forb scale, Leaf rollers, Peach aphid, Japanese beetle.	Mix 1 tablespoon in each gallon of water to be sprayed. Thoroughly cover leaves and branches. Repeat as necessary. Do not apply within 3 days of harvest, on apples, cherries and pears and within 7 days for peaches and apricots.
<u>Vegetables</u> Beans Celery Cucumbers Cabbage Melons	Aphids, Cucumber beetles, Thrips, Leafhoppers, Spider mites, Japanese beetles, Imported cabbageworm, Pickleworms.	Mix 1 tablespoon in each gallon of water covering entire plant with spray. Repeat as necessary. Do not apply within 1 day of harvest on beans, cucumbers and melons; within 7 days for cabbage and celery.
<u>Household</u>	Ants, Roaches, Carpet beetles, Silverfish, Spiders, Rice weevils, Flour beetles.	Mix 3 tablespoons in each gallon of water to be sprayed and apply in a coarse spray or with a brush to all areas frequented by pests. Avoid contamination of feed.
	Bedbugs	Use 3 tablespoons to a gallon of deodorized kerosene. Apply lightly to mattress surfaces and generously to bed frames. Wet all possible hiding places. Repeat as necessary.
<u>Mosquito Control</u> <u>Outdoors</u>	Flies, Mosquitoes, Flying insects.	Mix 2 ounces in each gallon of water to be sprayed. Apply in fogging or fine spray equipment. Repeat as often as necessary.
<u>Indoors</u>	Flies, Mosquitoes, Flying insects.	Mix 2 ounces to each gallon of water. Close doors and windows of room being sprayed for at least 10 minutes. Sweep up fallen pests. Repeat as necessary. Do not contaminate food, or kitchen utensils. Remove pets, birds and fish bowls from area to be sprayed.

When used as directed, this bottle will make up to 32 gallons of spray.

ACCEPTED WITH COMMENTS



**SK**  
**KEY 1**

09-37

2.67

# Malathion 50 INSECT KILLER

protects flowers and ornamental  
shrubbery; outdoor fly spray

**CAUTION:**  
**KEEP OUT OF THE**  
**REACH OF CHILDREN**

See side panel for other cautions

<b>ACTIVE INGREDIENTS</b>	
Malathion*	50%
Xylene	42%
<b>INERT INGREDIENTS:</b>	<b>8%</b>
<b>TOTAL 100%</b>	

\*O,-O-dimethyl dithiophosphate of diethyl mercaptosuccinate.

**NET CONTENTS 16 FL. OZ. (1 PT.)**

Read entire label  
directions. Do not

USE	
Roses	Lac
Carnations	hu
Evergreens	in
Mums	ado
Azaleas	Bar
	ars

Apples	Woo
Cherries	app
Apricots	aph
Pears	is t
Peaches	for
	for
	for

Beans	App
Celery	En
Cucumbers	Spe
Cabbage	nee
Melons	for

	Ap
	bee
	R
	bee
	Be

Outdoors	For
	for
	for

## DIRECTIONS FOR USE

Read entire label and use strictly in accordance with cautions and directions. Do not store diluted spray—make new dilution for each use.

<b>Ornamentals</b> Roses Carnations Evergreens Mums Azaleas	Lace bugs, Aphids, Mealybugs, Spider mites, Whiteflies, Japanese beetle adults, Birch leaf miners, Bagworms, Tent caterpillars, Scale.	Mix 1 tablespoon in each gallon of water to be sprayed. Spray plants thoroughly. Repeat as necessary. For scale, apply when crawlers have settled in foliage.
<b>Fruits</b> Apples Cherries Apricots Pears Peaches	Woolly apple aphid, Green apple aphid, Rosy apple aphid, Mealybug, Clover mite, Codling moth, Plum Curculio, Tent caterpillars, Forbes scale, Leaf rollers, Peach aphid, Japanese beetle.	Mix 1 tablespoon in each gallon of water to be sprayed. Thoroughly cover leaves and branches. Repeat as necessary. Do not apply within 3 days of harvest, on apples, cherries and pears and within 7 days for peaches and apricots.
<b>Vegetables</b> Beans Celery Cucumbers Cabbage Melons	Aphids, Cucumber beetles, Thrips, Leafhoppers, Spider mites, Japanese beetles, Imported cabbageworm, Pickleworms.	Mix 1 tablespoon in each gallon of water covering entire plant with spray. Repeat as necessary. Do not apply within 1 day of harvest on beans, cucumbers and melons; within 7 days for cabbage and celery.
<b>Household</b>	Ants, Roaches, Carpet beetles, Silverfish, Spiders, Rice weevils, Flour beetles.	Mix 3 tablespoons in each gallon of water to be sprayed and apply in a coarse spray or with a brush to all areas frequented by pests. Avoid contamination of feed.
	Bedbugs	Use 3 tablespoons to a gallon of deodorized kerosene. Apply lightly to mattress surfaces and generously to bed frames. Wet all possible hiding places. Repeat as necessary.
<b>Mosquito Control</b> Outdoors	Flies, Mosquitoes, Flying insects.	Mix 4 ounces in each gallon of water to be sprayed. Apply in fogging or fine spray equipment. Repeat as often as necessary.
Indoors	Flies, Mosquitoes, Flying insects.	Mix 4 ounces to each gallon of water. Close doors and windows of room being sprayed for at least 10 minutes. Sweep up fallen pests. Repeat as necessary. Do not contaminate food, or kitchen utensils. Remove pets, birds and fish bowls from area to be sprayed.

When used as directed, this bottle will make up to 32 gallons of spray.

# Malathion 50 INSECT KILLER

### CAUTION:

**Harmful if swallowed. Avoid prolonged breathing of spray mist. Avoid prolonged or repeated contact with skin; wash thoroughly after use. Avoid contamination of feed or foodstuffs. Keep away from children.**

### NOTICE:

**Buyer assumes all risks of use, storage or handling of this product not in strict accordance with directions given herewith.**

USDA REG NO. 5887-10



Manufactured in U.S.A. for  
S. S. KRESGE COMPANY  
Detroit, Michigan 48232

By BLACK LEAF PRODUCTS  
6147 N. Broadway, Chicago, Illinois 60626

ACCEPTED