

Feb 2, 1970

58405

DIRECTIONS

Remove metal cap. **HOLD CAN AS UP-RIGHT AS POSSIBLE** 4 to 6 inches from surface. Aim nozzle at infested surface, press spray valve, and move across surface at a rate of 1 to 2 feet per second leaving a wet coating.

This spray leaves a residual film that kills by contact when the bugs crawl over treated areas. Recommended repeated treatment. Every 1 to 2 months or as necessary.

Roaches, Waterbugs, Silverfish, Crickets. Spray insects directly or spray baseboards, cracks, hiding places, storage areas, and pathways over which insects crawl when coming out of hiding. Will not stain woodwork.

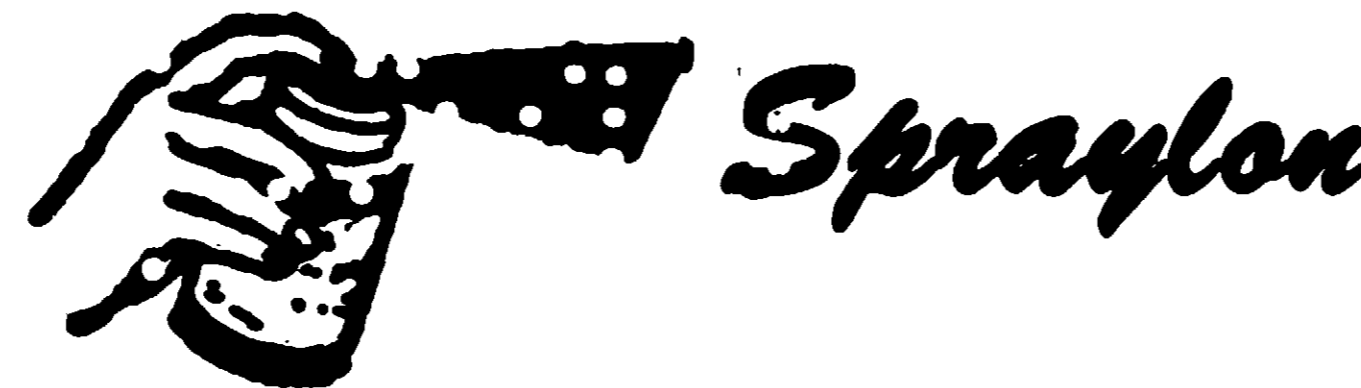
Ants. Spray ant trails, around door sills, window frames, crevices, ant mounds, etc.

Spiders, Wasps, Scorpions. Spray until wet, outside of door sills and window frames, or wherever these insects may enter home.

STROBEL PRODUCTS CO., INC

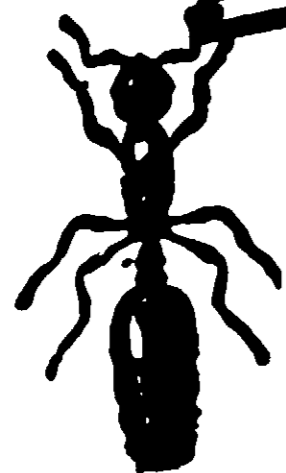
3015 21 West Main Street

LOUISVILLE KENTUCKY



**ROACH AND
ANT KILLER**

CHLORODANE SURFACE SPRAY
Kills Roaches, Spiders, Ants,
Silverfish, Wasps, Water Bugs



CAUTION

**KEEP OUT OF REACH
OF CHILDREN**

SEE OTHER CAUTIONS ON BACK PANEL



Feb 2, 1970

58405

DIRECTIONS

Remove metal cap. **HOLD CAN AS UP-RIGHT AS POSSIBLE** 4 to 6 inches from surface. Aim nozzle at infested surface, press spray valve, and move across surface at a rate of 1 to 2 feet per second leaving a wet coating.

This spray leaves a residual film that kills by contact when the bugs crawl over treated areas. Recommended repeated treatment. Every 1 to 2 months or as necessary.

Roaches, Waterbugs, Silverfish, Crickets. Spray insects directly or spray baseboards, cracks, hiding places, storage areas, and pathways over which insects crawl when coming out of hiding. Will not stain woodwork.

Ants. Spray ant trails, around door sills, window frames, crevices, ant mounds, etc.

Spiders, Wasps, Scorpions. Spray until wet, outside of door sills and window frames, or wherever these insects may enter home.

CAUTION: Repeated or prolonged contact with skin can cause toxic symptoms. If accidental contact with skin occurs wash with soap and water. Avoid inhalation. Do not spray on food, dishes, or cooking utensils. Keep out of reach of children. Harmful if swallowed.

FIRE HAZARD: Do not spray, use, or store near heat or open flame. Do not smoke while spraying.

NOTE: Asphalt tile, some linoleums, certain plastic materials, and wallpaper may have a tendency to discolor, streak and soften when wet with insecticides. Do not spray or wet such materials before first testing on a small inconspicuous area.

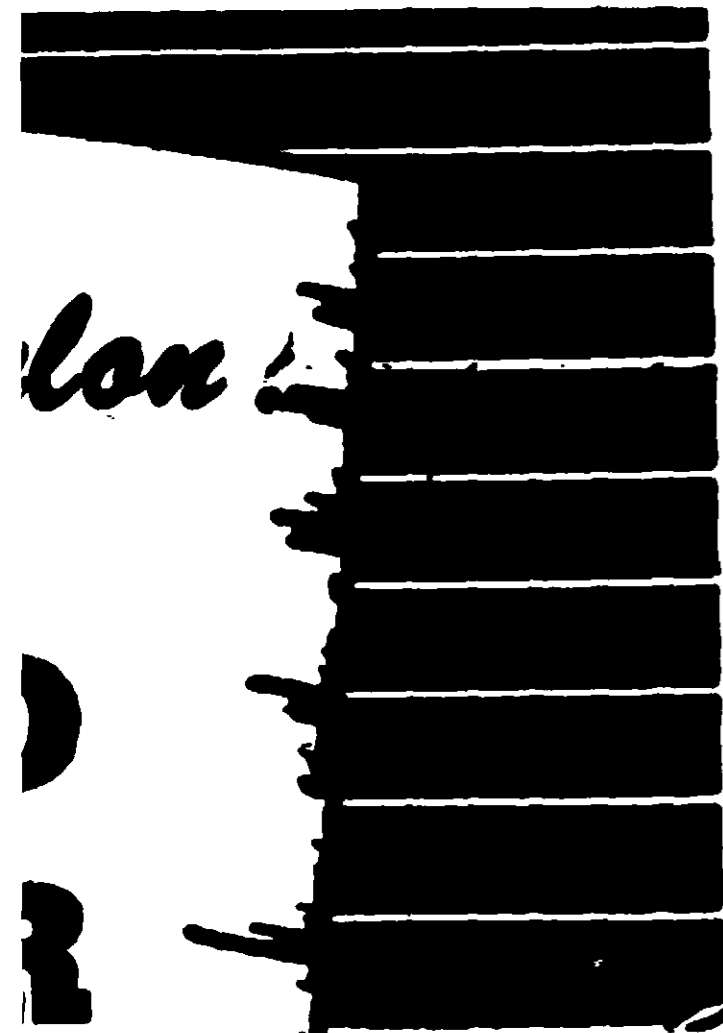
ACTIVE INGREDIENTS: Technical Chlordane 2.00% (Equivalent to 1.2% Octachloro — 4, 7 — Methanotetrahydroindane and 0.8% Related Compounds). Pyrethrins 0.046%. Technical Piperonyl Butoxide 0.115% (Equivalent to 0.092% (Butylcarbityl) (6-propyl piperonyl) ether and 0.023% related compounds), Petroleum Distillate 72.839%.
INERT INGREDIENTS: 25.000%.
Total 100.000%.

STROBEL PRODUCTS CO., INC.

3015 - 21 West Main Street
LOUISVILLE, KENTUCKY

Contents 12 Fluid Ozs.

USDA Reg. No. 5840-5



ONS ON BACK PANEL