



U.S. ENVIRONMENTAL PROTECTION AGENCY

Office of Pesticide Programs
Antimicrobials Division (7510P)
1200 Pennsylvania Ave., N.W.
Washington, D.C. 20460

EPA Reg. Number:

5813-138

Date of Issuance:

11/4/25

NOTICE OF PESTICIDE:

☒ Registration
☐ Reregistration
(under FIFRA, as amended)

Term of Issuance:

Unconditional

Name of Pesticide Product:

Phat Gus

Name and Address of Registrant (include ZIP Code):

Christina Wilkinson
Agent
CLOROX CO., THE
cwilkinson@srconsultants.com

Note: Changes in labeling differing in substance from that accepted in connection with this registration must be submitted to and accepted by the Antimicrobials Division prior to use of the label in commerce. In any correspondence on this product always refer to the above EPA registration number.

On the basis of information furnished by the registrant, the above named pesticide is hereby registered under the Federal Insecticide, Fungicide and Rodenticide Act (FIFRA).

Registration is in no way to be construed as an endorsement or recommendation of this product by the Agency. In order to protect health and the environment, the Administrator, on his motion, may at any time suspend or cancel the registration of a pesticide in accordance with the Act. The acceptance of any name in connection with the registration of a product under this Act is not to be construed as giving the registrant a right to exclusive use of the name or to its use if it has been covered by others.

This product is unconditionally registered in accordance with FIFRA section 3(c)(5) provided that you:

1. Submit and/or cite all data required for registration/reregistration/registration review of your product when the Agency requires all registrants of similar products to submit such data.
2. The data requirements for storage stability and corrosion characteristics (Guidelines 830.6317 and 830.6320) are not satisfied. A one year study is required to satisfy these data requirements. You have 18 months from the date of registration to provide these data.

Signature of Approving Official:

Demson Fuller, Product Manager 32
Regulatory Branch 1
Antimicrobials Division (7510P)

Date:

11/4/25

3. Make the following label changes before you release the product for shipment:

- Revise the EPA Registration Number to read, "EPA Reg. No. 5813-138."

4. Submit one copy of the revised final printed label for the record before you release the product for shipment.

Should you wish to add/retain a reference to the company's website on your label, then please be aware that the website becomes labeling under FIFRA and is subject to review by the Agency. See FIFRA section 2(p)(2). If the website is false or misleading, the product would be misbranded and unlawful to sell or distribute under FIFRA section 12(a)(1)(E). 40 CFR 156.10(a)(5) lists examples of statements EPA may consider false or misleading. In addition, regardless of whether a website is referenced on your product's label, claims made on the website may not substantially differ from those claims approved through the registration process, FIFRA section 12(a)(1)(B). Therefore, should the Agency find or if it is brought to our attention that a website contains false or misleading statements or claims substantially differing from the EPA approved registration, the website will be referred to the EPA's Office of Enforcement and Assurance.

If these conditions are not complied with, the registration will be subject to cancellation in accordance with FIFRA section 6. Your release for shipment of the product constitutes acceptance of these conditions. A stamped copy of the label is enclosed for your records. Please also note that the record for this product currently contains the following CSFs:

- Basic CSF dated 6/5/2024
- Alternate CSF #s 1-7, all dated 6/5/2024

If you have any questions, please contact Oiguenblik.Emilia @epa.gov or Fuller.Demson@Epa.gov

Sincerely,



Demson Fuller, Product Manager 32
Regulatory Management Branch I
Antimicrobials Division (7510P)
Office of Pesticide Programs

Enclosure: Stamped label

Label identification

Phat Gus, EPA Reg. No. 5813-*to-be-assigned*

RC875011

9:30 6/17/25

ACCEPTED

11/4/2025

Under the Federal Insecticide, Fungicide
and Rodenticide Act as amended, for the
pesticide registered under
EPA Reg. No. **5813-138**

Formatting notes (applicable for all claims)

Now[!] -and/or- **New[ly][!]** -and/or- **Improved[!]** may be added anywhere to a claim and will only be used for the first 6 months of product on shelf.

Optional text may be placed anywhere on the label -and/or- container.

Bold, italicized text is information for the reader and is not part of the label.

Bracketed information is optional text.

All footnotes are on the last page, unless they are part of EPA's mandated text.

The word "and" may be substituted with "&". Plural words may be used in their singular form or singular words may be used in their plural form unless otherwise specified in 40 CFR.

All directions may be written in numbered form or in paragraph form.

All use surfaces and/or use sites on the label may be listed in conjunction with an image of the use surface and/or use site.

Highlighted text is new. Strike-through text means removed.

Phat Gus

KEEP OUT OF REACH OF CHILDREN

WARNING:

SEE BACK -OR- SIDE -OR- TOP PANEL -OR- LABEL FOR
ADDITIONAL PRECAUTIONARY STATEMENTS.

[NET CONTENTS]_____

Active Ingredient:

Sodium Hypochlorite 1.30%

Other Ingredients: 98.70%

Total: 100.00%

[(Yields 1.24% available chlorine)]

Contains no phosphates

PRECAUTIONARY STATEMENTS: Hazards to Humans & Domestic Animals

WARNING: Causes substantial but temporary eye injury. Do not get in eyes or on clothing. Wear safety glasses. Wash thoroughly with soap and water after handling and before eating, drinking, chewing gum, using tobacco, or using the toilet. Remove and wash contaminated clothing before reuse.

FIRST AID: If in eyes: Hold eye open and rinse slowly and gently with water for 15-20 minutes. Remove contact lenses, if present, after the first 5 minutes, then continue rinsing eye. Call a poison control center or doctor for treatment advice. Have the product container or label with you when calling a poison control center or doctor or going for treatment. Clorox information line: 1-888-797-7225.

PHYSICAL OR CHEMICAL HAZARDS: STRONG OXIDIZING AGENT: Do not mix with other chemicals. Mixing this product with chemicals (e.g., ammonia, acids, detergents) or organic matter (e.g., urine or feces) in a manner inconsistent with labeling directions may release hazardous gases irritating to the eyes, lungs, and mucous membranes.

EPA Reg. No. 5813-*to be assigned*

EPA Est. No. 5813-CA-3 (A8 or H8), GA-1 (A4), CA-6 (TPP), GA-2 (VG), IL-2 (VF); 58455-IN-1 (C6), IN-2 (01); 71106-GA-2 (E8), 71681-IL-1 (03), IL-2 (24); 8251-OH-1 (Q6); 52379-MI-2 (JX)

Beginning of batch code indicates Est. No.

[[Final Packaging Facility:] [EPA Est. No. 5813-GA-2 -or- **insert one EPA Est No. without 2-digit plant code**]

For Puerto Rico only: EPA Est. No. 5813-PR-1

Clorox Customer assistance 1-800-227-1860 -or- [For] Questions[?] [and] [or] Comments[?] Visit www.clorox.com or [Call] [toll-free] 1-800-227-1860 (in the US)

-or- (787) 641-4943 (in Puerto Rico)

-or- For additional advice -or- instructions on how or where to use this product, call [toll-free] 1-800-227-1860

Any questions? The experts at Clorox are standing by to answer your [household cleaning] questions. -and/or- [SATISFACTION GUARANTEED] -and/or- At Clorox we pride ourselves on making consistent quality products [for over -or- more than 100 -or- **insert number** years], and we are dedicated to ensuring your total satisfaction with our product. [If you are not completely satisfied, please call [the number below] 1-800 227-1860.] Visit us at www.clorox.com -or- www.cloroxhome.com
For more [product -and/or- ingredient] information, visit IngredientsInside.com -or- www.smartlabel.org.

For [a] Spanish translation of product directions -or- instructions -or- information, visit www.clorox.com.

Clorox and Clean-Up are registered trademarks of The Clorox Company.

Mfd. for & © XXXX The Clorox Company, 1221 Broadway, Oakland, CA 94612

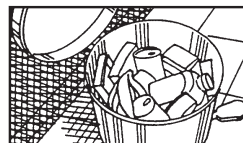
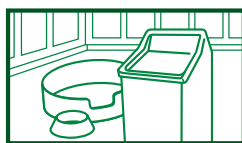
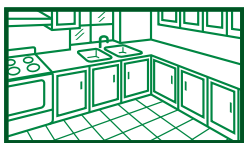
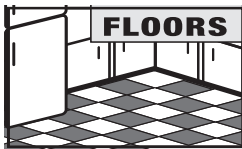
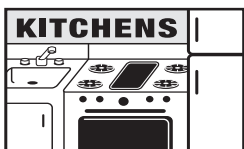
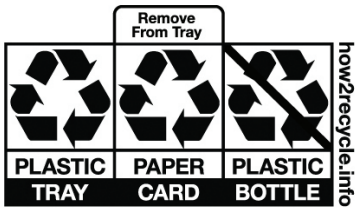
[and Dist. by & © XXXX Clorox Commercial Company, [Ave. Chardon, #350, Torre Chardon, Suite 320,

San Juan, PR 00918]. (bracketed text for Puerto Rico only)

Made in [the] U.S.A. [of global components -and/or- ingredients.] -or- Made in Puerto Rico of global components

Patents: www.thecloroxcompany.com/patents

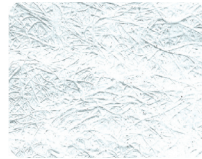
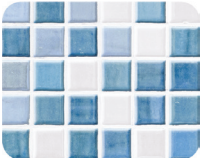
Optional Graphics



These are surface material graphics and will be used with Table 3 surface materials



USE SURFACES GRAPHICS



To be used as scent descriptor graphics only



Directions for Use graphics



Packaging Related Statements and Icons

Padlock icon unlocked and locked (on bottle shrink) with corresponding arrow (molded into trigger)

Replace trigger by aligning red tip on trigger

To refill [spray bottle]: Turn trigger on spray bottle [1/4 turn] counterclockwise [and pull upward[s]] to remove. [After refilling spray bottle,] Replace trigger by aligning red tip -or- tube on trigger to small opening -or- tube inside bottle [while pushing down -and/ or- push [sprayer] [straight] down [until it clicks -and/ or- locks into place]].

-or-

To refill [spray bottle]: Twist [trigger] [on spray bottle] [1/4 turn] [counterclockwise] [and pull up -or- upward[s]] to remove. [Fill spray bottle with refill solution.] [After refilling spray bottle,] [to replace trigger,] Align [red tip] tube on trigger [head] over [small] opening -or- tube [on] [the] inside [of the bottle]. [[Note that] trigger [head] should point in [the] same direction as [the] tube [running] on the outer edge of the bottle.] Press [straight] down on the trigger [head], [applying even pressure] [until it clicks -and/or- locks] [into place].

- When almost empty, -or- To spray every drop[,] [:] tilt bottle downward -or- at a downward angle [while spraying].

- [To foam (close screen on nozzle) or spray (open screen on nozzle)].
- To Foam -or- To Spray: Turn -or- Rotate nozzle to ON.

-or-

- [[Easy] Refill [Instructions on [the] Back]]

- Twist off, Refill. Align Tip to Tube.

Push[,] Snap to Close -or- Push Down to Close.

-or- [To Refill:]

1. [TO REMOVE:] Twist & pull up

2. [TO REPLACE:] Align [red] tip [to tube] & push down

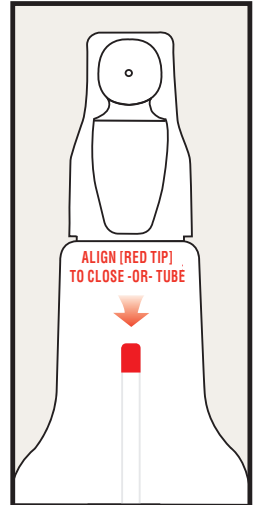
-or-

TO REFILL SPRAY BOTTLE:

Twist trigger on spray bottle counterclockwise and pull upward to remove. Refill spray bottle. To replace trigger, align red tipped tube on trigger over tube opening inside of the bottle. Press straight down on the trigger until it clicks into place.



Twist off, Refill Align Tip to Tube Push[,] Snap -or- Down to Close



Optional graphic



More Savings [!][,] Less Waste [!] -or- More Savings [!]*

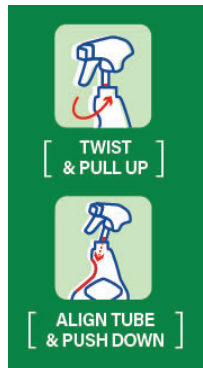


More than

Trigger Bottles



[TO REFILL:]
[TWIST & PULL UP]
[ALIGN TUBE & PUSH DOWN]



Twist Off, Refill



Align Tip to Tube



Push Down to Close



[Refill only with this product]

Alternate for Refill Bottle:

To Refill [Spray Bottles]:

-or-

Remove safety tab [labeled REMOVE] by pulling firmly.

When empty, discard in trash.

Do not attempt to refill

[Remove]

[Pour]

[Use]

1. Remove trigger sprayer -or- cap [from empty bottle]

2. Unscrew cap on refill and pour contents directly into empty bottle.

3. Replace trigger sprayer [and use as you normally would].

-or-

[Remove trigger sprayer from empty bottle,] unscrew cap and transfer your trigger to this bottle.

Tear [along] perforation [to remove [label] and/or recycle]

DIRECTIONS FOR USE. It is a violation of Federal law to use this product in a manner inconsistent with its labeling.
For all products optional text USE ONLY IN WELL-VENTILATED AREAS.

Disinfection

To [clean and] disinfect hard, nonporous, non[-]food contact surfaces [against bacteria and viruses[†]]: *Must remove brackets around “against bacteria and viruses” if any fungicidal claims appear on pack*

[Push button to] spray 6-8 in[ches] from surfaces until thoroughly -or- completely wet. Treated surface must remain visibly wet for 30 sec[onds] [- allow to penetrate dirt -and/or- grime -and/or- soap scum]. Scrub [,] [and] [rinse] [with water] [and] [wipe] [away]. [Allow to air dry.] [For best results, use regularly to prevent dirt -and/or- grime -and/or- soap scum -and/or- mold -and/or- mildew [build-up.]] For visibly soiled surfaces, pre-clean surface before disinfecting.

-or-

[Squeeze bottle to] spray 6-8 in[ches] from surfaces until thoroughly -or- completely wet. Treated surface must remain visibly wet for 30 sec[onds] [- allow to penetrate dirt -and/or- grime -and/or- soap scum]. Scrub [and][,] [rinse] [with water] [and] [wipe] [away]. [Allow to air dry.] [For best results, use regularly to prevent dirt -and/or- grime -and/or- soap scum -and or mold -and/or- mildew [buildup.]] For visibly soiled surfaces, pre-clean surface before disinfecting.

-or-

[Turn nozzle [counter]clockwise to ON -or- Open -or- Rotate nozzle to FOAM or SPRAY.] Spray [product] 4-6 in[ches] from surface until thoroughly wet. Treated surface must remain visibly wet for 30 sec[onds] [Rinse -or- wipe clean.] [Allow to air dry.] -or- Spray 6-8 in[ches] from surface and allow product to penetrate tough stains and messes. Treated surface must remain visibly wet for 30 sec[onds] [Wipe with a wet sponge or cloth and rinse with water. No scrubbing required.] For visibly soiled surfaces, preclean [surface] before disinfecting.[No gloves required.]

To [clean and] kill *Trichophyton interdigitale* -and/or- *Aspergillus brasiliensis* -and/or- mold -and/or- mildew on hard, nonporous surfaces

[Turn nozzle [counter]clockwise to ON -or- Open -or- Rotate nozzle to FOAM or SPRAY.] Spray product 4-6 in[ches] from surface until thoroughly wet. Treated surface must remain visibly wet for 5 min[utes]. [Rinse -or- wipe clean.] [Allow to air dry.] For visibly soiled surfaces, preclean surface before disinfecting.

Sanitization

To [clean] [and] sanitize hard, nonporous non[-]food contact surfaces

Turn nozzle [counter]clockwise to ON -or- Open -or- Rotate nozzle to FOAM or Spray.] Spray product 4-6 in[ches] from surface until thoroughly wet. Treated surface must remain visibly wet for 30 sec[onds]. [Rinse -or- wipe clean.] [Allow to air dry.] For visibly soiled surfaces, preclean surface before sanitizing.

Allergen Destruction Of Dust Mite And Cockroach Matter/Particles And Pet Dander

To [clean and] destroy specified allergens^[††]

[Turn nozzle [counter]clockwise to ON -or- Open -or- Rotate nozzle to FOAM or SPRAY.] Spray product 4-6 in[ches] from surface until thoroughly wet. Let stand 3 min[utes]. [Rinse -or- wipe clean.] [Allow to air dry.]

Cleaning, Deodorizing, Stain Removal

[How] to clean -and/or- deodorize -and/or- remove stains

Turn nozzle [counter][clockwise] to ON -or- Open -or- Rotate nozzle to FOAM or SPRAY.] Spray [directly] onto surface. [Rinse or wipe clean.] [Allow to air dry.] -or- Spray 6-8 in[ches] from surface and allow product to penetrate tough stains and messes. Wipe with a wet sponge or cloth and rinse with water. [No scrubbing required. For stronger jobs, use FOAM option. Spray and let product stand on surface for several minutes before wiping.]

To Clean and Deodorize

[Push button to] spray surfaces [until [thoroughly -or- completely] wet]. [Let stand [for several minutes] to penetrate dirt -and/or- grime -and/or- soap scum.] Scrub [,] [to remove tough stains] [and] [rinse] [with water] [and] [wipe] [away]. [For best results, use regularly to prevent dirt -and/or- grime -and/or- soap scum build-up -and/or- mold stains -and/or- mildew stains [buildup.]]

-or-
[Squeeze bottle to] spray surfaces [until [thoroughly -or- completely] wet]. [Let stand [for several minutes] to penetrate [dirt -and/or- grime -and/or- soap scum]. [Scrub to remove tough stains [and reach] [in] tight spaces] [and] [rinse] [with water] [and] [wipe] [away]. [For best results, use regularly to prevent dirt -and/or- grime -and/or- soap scum -and/or- mold stains -and/or- mildew stains [buildup.]]

Keep[ing] Christmas Trees Fresher Longer: To prolong the life of a fresh cut tree, instead of using plain water in the tree stand bowl, use a solution of 2 Tablespoons of this product in 1 gal[lon] hot water, 1 cup corn syrup and 1/8 cup powdered chelated iron (available from local nurseries).

Keep[ing] Cut Flowers Fresh Longer: Fresh cut flowers will stay beautiful longer if you add 1 teaspoon -or- tsp of this product to 1/3 gal[lon] of cold water. This product can also be used to remove flower vase stains and odors. Wash the vase thoroughly and then fill with a solution of 1 tablespoon or 1 tbsp [of] this product -or- ***insert full product name*** to (1) gal[lon] water. Let stand 6 min[utes] before rinsing.

Optional text

- Prolonged contact with metal, old porcelain or worn plastic laminate may cause discoloration.

Residential/Household Containers intended to be refilled with this product by end-user

STORAGE AND DISPOSAL:

Store this product in a cool [dry] area, [away from direct sunlight and heat] to avoid deterioration. Do not reuse or refill except as described in the directions for use. Refill only with this product. [Please] recycle empty container or discard in trash.

Residential/Household Nonrefillable containers

Store this product in a cool [dry] area, [away from direct sunlight and heat] to avoid deterioration. Nonrefillable container. Do not refill or reuse this container. [Please] recycle empty container or discard in trash.

Non-Residential Containers intended to be refilled with this product by end-user

STORAGE AND DISPOSAL: Do not contaminate water, food, or feed by storage and disposal. **Storage:** Store this product in a cool [dry] area, [away from direct sunlight and heat] to avoid deterioration. In case of spill, flood areas with large quantities of water. **Pesticide Disposal:** Product that cannot be used should be diluted with water before disposal in a sanitary sewer. **Container Disposal:** Do not reuse or refill except as described in the directions for use. [Please] recycle empty container or discard in trash.

Non-Residential Nonrefillable Containers

STORAGE AND DISPOSAL: Do not contaminate water, food, or feed by storage and disposal. **Storage:** Store this product in a cool [dry] area, [away from direct sunlight and heat] to avoid deterioration. In case of spill, flood areas with large quantities of water. **Pesticide Disposal:** Product that cannot be used should be diluted with water before disposal in a sanitary sewer. **Container Disposal:** Nonrefillable container. Do not reuse or refill this container. [Please] recycle empty container or discard in trash.

Antimicrobial Claims

- 3-in-1 [Kills Germs] [Disinfects][,] [+ -or- &] Cleans[,] [-and/or-] Removes 99% of Allergens⁴⁴ [with] [Clorox[®] bleach]
- A bleach product for household -and/or- institutional -and/or- industrial cleaning and disinfecting
- A [smarter] way to [disinfect -and/or- clean] the [bathroom -and/or- restroom -and/or- kitchen -and/or- home -and/or- household -and/or- office -and/or- workplace office -and/or- classroom -and/or- school]
- Antibacterial [action]
- Antibacterial cleaner
- Bacteria-killing -or- Germ-killing formula
- Bactericidal
- Bactericide
- Bathroom -or- restroom disinfectant
- Bio-stain remover -and/or- odor block[er]
- Bleach disinfectant [-and/or- cleaner]
- Broad spectrum disinfectant [cleaner]
- Can reduce the cross-contamination of kitchen -and/or- school -and/or- classroom -and/or- bathroom -or- restroom -and/or- household -and/or- office -or- work -or- office place bacteria -and/or- germs between treated hard, nonporous surfaces
- Cleaner and disinfectant in one
- Cleaning and disinfecting effectiveness so your bathroom -and/or- home -or- house -and/or- school -and/or- classroom -and/or- kitchen -or- office -and/or- work -or- office place is free of grime -or- dirt -or- soils -and/or- soap scum you can see and germs -and/or- bacteria you can't [see]
- Cleans -and/or- disinfects bathroom -and/or- school^P -and/or- classroom bathroom -or- restroom -and/or- kitchen^P -and/or- home^P -or- household^P -and/or- office^P -or- work^P -or- office place^P
- Cleans as it Disinfects³⁶
- Cleans while it kills germs³⁶
- Confident[ly] clean [and disinfect]
- Defend[s] against mold & mildew⁴⁷
- Disinfection and Powerful cleaning⁴⁷
- Disinfecting bleach cleaner
- Disinfects
- Disinfects -or- sanitizes the surfaces^P [your family touches most]
- Disinfects [outside of] appliances^P
- Disinfects and cleans your home^P
- Disinfects and deodorizes by killing common⁴⁵ household^P germs and controlling their odors
- Disinfects as it kills bacteria
- Disinfects for pennies
- Disinfects nonporous hard -and/or- solid surfaces
- Easily cleans -and/or- deodorizes -and/or- sanitizes -and/or- disinfects
- [Easy -and/or- convenient] way to disinfect
- [Effective] [bathroom -and/or- restroom -and/or- kitchen^P -and/or- household^P -and/or- office^P -and/or- workplace^P] disinfectant -and/or- cleaner
- [Effective] disinfectant [in presence of 5% serum load -or- organic soil]
- Eliminates odors caused by bacteria -or- germs -or- mildew
- Fast-acting disinfectant [cleaner]
- For daily [use] [cleaning and] [disinfecting]
- Fungicide
- Fungicidal [Disinfectant]
- Germicidal
- Germicide
- Home -or- household disinfectant^P -and/or- cleaner
- [Home^P] Disinfectant
- Kills 99.99% of bacteria²⁸
- Kills 99.9% of [common⁴⁵] household^P germs -and/or- bacteria -and/or- viruses[‡]
- Kills [99.9% of common⁴⁵ household] germs: Salmonella enterica [(Salmonella)], Staphylococcus aureus [(Staph)], Cold virus (Rhinovirus [Type] 14), Flu virus (Influenza A Virus) **Insert any other organisms from the Disinfection Organisms table.**
- Kills 99.9% of Germs -and/or- Viruses[‡] -and/or- Bacteria [on hard, nonporous surfaces]
- Kills 99.9% of Germs -and/or- Viruses[‡] -and/or- Bacteria -and/or- COVID-19 Virus[‡]
- Kill[s] -and/or- eliminate[s] -and/or- disinfect[s] against -and/or- remove[s] -and/or- get[s] rid of -and/or- reduce[s] **must remove brackets around 99.9% when "eliminate[s]" or "get[s] rid of" in claim** [99.9% of] [the] bacteria -and/or- germs -and/or- viruses[‡] found in [the] **insert use site(s) from Table 2** -and/or- on [the] **insert surface(s) from Table 1**
- Kill[s] -and/or- eliminate[s] -and/or- disinfect[s] against -and/or- remove[s] -and/or- get[s] rid of -and/or- reduce[s] **must remove brackets around 99.9% when "eliminate[s]" or "get[s] rid of" in claim** [99.9% of] [the] cold virus²² -or- flu virus²³ -or- cold and flu viruses²¹ found in [the] **insert use site(s) from Table 2** -and/or- on [the] **insert surface(s) from Table 1**
- Kills Athlete's Foot Fungus²⁴
- Kills cold and flu viruses²¹
- Kills cold, flu, and COVID-19 viruses[‡] in 30 seconds^{△, P}: Cold virus (Rhinovirus [Type] 14), Flu virus (Influenza A Virus), SARS-CoV-2 [the virus that causes COVID-19]
- Kills COVID-19 Virus[‡]
- Kills mold and mildew
- Kills -or- Disinfects against -or- Effective against [the] COVID-19 virus[‡] -or- virus that causes COVID-19[‡] [in 30 sec[onds]]
- Kills -or- eliminates **must remove brackets around 99.9% when "eliminates" in claim** [99.9%] cold virus²² -and/or- flu virus²³
- Kills -or- eliminates **must remove brackets around 99.9% when "eliminates" in claim** [99.9%] [Salmonella Enterica³³] [harmful kitchen germs -or- bacteria]
- Kills -or- eliminates **must remove brackets around 99.9% when "eliminates" in claim** [99.9%] of viruses that cause cold²² -or- flu²³
 - Kill[s] [99.9% of] Germs -and/or- Viruses[‡] -and/or- Bacteria [[from -or- Hiding] [in -or- on] [your] -or- Any^P -or- Every^P -or- All^P **insert surface(s) from Table 1** -and/or- **insert surface material(s) from Table 3** -or- Everywhere^P]
- Kitchen^P disinfectant
- Leaves surfaces sanitized
- Mildewcidal
- Mildewcide
- One step cleaner and disinfectant³⁶
- Removes -and/or- cleans -and/or- bleaches out -and/or- cuts through -and/or- tough on mold -and/or- mildew
- Removes -and/or- bleaches out mold and mildew stains
- Removes stains and disinfects³⁶

- Salmonella enterica [(Salmonella)] and Staphylococcus aureus [(Staph)] are germs found where food is prepared and stored. This product kills these harmful germs and helps reduce the spread of food-borne contamination between treated hard, nonporous kitchen surfaces
- Sanitizes surfaces
- Scrub-free disinfection³⁹
- Kills *X* germs *X represents disinfection organisms; input value for X based on Disinfection Organism Table*
- Removes -or- eliminates -or- destroys 99.9% of mold and mildew
- Spread the word, not the germs [of cold and flu season] [using this product] [in your home^P] [in your office^P] [in your child's school^P] [in your child's classroom^P]
- Tested [and proven effective] against SARS-CoV-2 [the cause of -or- the coronavirus that causes COVID-19] [in 30 sec[onds]]^P
- Tested -and/or- Proven [Effective] on COVID-19 Virus[◇]
- This cleaner -and/or- disinfectant combines cleaning and disinfecting [in one product] [in one step]³⁶
- [This product] has the cleaning power -and/or- effectiveness to clean and disinfect³⁶
- This product is a cleaner disinfectant which combines cleaning, disinfecting and stain removal in one product³⁶
- [This product] The power to clean [tough] [bathroom -and/or- restroom -and/or- school -and/or- classroom -and/or- kitchen -and/or- household -and/or- office -and/or- workplace] grime -or- dirt -or- soils and kill bathroom germs -and/or- bacteria³⁶
- Virucidal†
- Virucide†
- Use [throughout the house] on hard, nonporous non[-]food surfaces

Allergen Destruction Of Dust Mite And Cockroach Matter/Particles And Pet Dander Claims

- Breaks down -or- Deactivates -or- Destroys -or- Penetrates -or- Reduces dust mite matter -or- particles, cockroach matter -or- particles and pet dander allergens found in dust
- Breaks down -or- Deactivates -or- Destroys -or- Penetrates -or- Reduces [household] dust mite matter -or- particles, cockroach matter -or- particles and pet dander allergens
- Destroys 99% of pet -and/or- dust mite allergens
- Removes 99% of allergens^{††}
- Removes -and/or- Controls 99% of common [indoor] allergens^{††}
- This product cleans, kills germs, dust mite matter -or- particles, cockroach matter -or- particles, pet dander while cleaning hard, nonporous surfaces[:] sinks, counters, refrigerators, appliances and fiberglass tubs.
- [***This product***] Removes [more than -or- greater than -or- over] [***insert number between 90 and 99.9%***] of the following allergen(s)^{††}

Emerging Viral Pathogen Claims

This product qualifies for emerging viral pathogen claims per the EPA's "Guidance to Registrants: Process for Making Claims Against Emerging Viral Pathogens not on EPA-Registered Disinfectant labels" when used in accordance with the appropriate directions for use indicated below.

Product name -or- this product meets the criteria to make claims against emerging viral pathogens from the following viral categories:

- Enveloped viruses
- Large non-enveloped viruses
- Small non-enveloped viruses

<i>For an emerging viral pathogen that is a/an...</i>	<i>...follow the directions for use for the following organisms on the label:</i>
Enveloped virus	Rhinovirus [Type] 14
Large, non-enveloped virus	Rhinovirus [Type] 14
Small, non-enveloped virus	Feline Calicivirus (as surrogate for Norovirus) Rhinovirus [Type] 14

This product has demonstrated effectiveness against viruses similar to ***insert name of emerging virus*** on hard, nonporous surfaces. Therefore, ***this product*** can be used against ***insert name of emerging virus*** when used in accordance with the directions for use against ***insert name of supporting virus(es)*** on hard, nonporous surfaces. Refer to the CDC -or- OIE website at ***insert pathogen-specific website address*** for additional information.

Insert name of illness/outbreak is caused by ***insert name of emerging virus***. ***This product*** kills similar viruses and therefore can be used against ***insert name of emerging virus*** when used in accordance with the directions for use against ***insert name of supporting virus(es)*** on hard, nonporous surfaces. Refer to the CDC -or- OIE website at ***insert pathogen-specific website address*** for additional information.

Organism Table

Hard, nonporous surface Disinfection		
Bacteria	Strain and/or ATCC	Contact Time
Salmonella enterica [(Salmonella)]	[ATCC 10708]	30 sec[onds]
Staphylococcus aureus [(Staph)]	[ATCC 6538]	30 sec[onds]
Fungi	Strain and/or ATCC	Contact Time
Aspergillus brasiliensis [Mold and Mildew]	[ATCC 16404]	5 min[utes]
Trichophyton interdigitale [(Athlete's Foot Fungus)]	[ATCC 9533]	5 min[utes]
Enveloped Viruses	Strain and/or ATCC	Contact Time
‡Influenza A Virus	[ATCC VR-544] [Strain A/Hong Kong/8/68]	30 sec[onds]
‡Human Coronavirus [causes colds]	[ATCC-VR-740] [Strain 229-E]	30 sec[onds]
‡SARS-CoV-2	[Isolate USA-WA1/2020, NR-52281]	30 sec[onds]
Non-enveloped Viruses	Strain and/or ATCC	Contact Time
‡Feline Calicivirus (Surrogate for Norovirus)	[ATCC VR-782] [Strain F-9]	30 sec[onds]
‡Rhinovirus [Type] 14	[ATCC VR-284] [Strain 1059]	30 sec[onds]
Hard, nonporous non[-]food contact surface Sanitization		
Bacteria	Strain and/or ATCC	Contact Time
Klebsiella pneumoniae	[ATCC 4352]	30 sec[onds]
Staphylococcus aureus [(Staph)]	[ATCC 6538]	30 sec[onds]

General Miscellaneous Claims

- __ [fl] oz. [= [More than] __ [fl] oz.] Trigger Bottles
- [2-]in[1] Scrubbers + -or- & Cleaners
- 2-in-1 trigger [option]
- **Insert a number from 2-10x** more cleaning power^{PP}
- 3X Cleaning Action -or- Power[:]¹⁹
- **X%** more stain removal^{PP} -or- cleaning power^{PP} **X is a number between 10-99**
- A bathroom cleaner with the cleaning power of [Clorox®] bleach
- Accurate-aim trigger [option] [for better [bleach] control]
- Align to close
- [Also] [choose] [with] foaming action -or- foam
- Anti-foam -or- anti-suds nozzle
- Bathroom -and/or- Kitchen Spray
- [Be -and/or- Get] RefillSmartTM[!]
- Better aim [for better [bleach] control]
- Better Refill with Smart Tube Technology^L
- Bleach for kitchen and bath
- Bleach what you want to bleach and nothing more!
- Bleach [without the [strong] smell]
- Bleaches away stains [in the bathroom]
- Brightens
- Brightens like bleach. Less [bleach] odor -or- smell⁴⁶
- Cheaper than **X XX** [fl] oz trigger [sprays]³⁰ **X is a number between 2 and 10 and XX is a number between 12-32**
- Clean confidently
- [Choose] [with] foam [option -and/or- setting] [or spray]
- [Choose] [with] Power Foam -and/or- Powerfoam -and/or- Foam Power -and/or- FoamAction for a deep clean
- Clean more of your home confidently, on more compatible surfaces⁴⁶
- Cleaner and deodorizer for the toughest jobs
- Clean[s] [All^P -and/or- Your -and/or- Entire^P] Crevices -and/or- Cracks -and/or- Corners -and/or- [Tight] Spaces -and/or- [Tight] Spots -and/or- Angles [in Minutes]
- Clean[s] [All^P -and/or- Your -and/or- Entire^P] **insert surface(s) from Table 1 -and/or- insert surface materials from Table 3 -and/or- Everywhere^P [in Minutes]**
- Cleans and removes stains from washable floors⁴⁴
- Cleans [dirty floors⁴⁴] greasy counter[top]s
- Cleans everyday [tough -and/or- kitchen] messes [like **insert soil(s)/stain(s) from Table 4**]
- Cleans [floor -and/or- counter -and/or- bathroom tile] grout
- Cleans tough kitchen messes like coffee -and/or- juice -and/or- tea -and/or- wine
- Cleans [everyday] tough messes
- Cleans shower tracks -and/or- grout -and/or- stovetops³⁷ **"37" will appear in the claim if "stovetops" is used**
- Clorox® [bleach] means clean!
- [Clorox®] cleaning -and/or- power -and/or- strength [combined] with [ergonomic] design -or- precision
- Compatible with -or- Great on -or- Ideal for **insert surface(s) from Table 1 -and/or- insert surface material(s) from Table 3** surface [material]s
- Complete -or- Total -and/or- Max[imum] Clean [Everywhere^P -and/or- Every Time]
- Concentrated [foaming] spray action [for better [bleach] control]
- Conquer[s] Corners -and/or- Crevices
- Contains a powerful cleaner plus Clorox® bleach
- Contains biodegradable cleaning agents -and/or- cleaners -and/or- surfactants -and/or- soaps and detergents
- Contains sodium hypochlorite plus a cleaner
- Controlled bleach spray
- Cuts through [tough] grease and grime
- Deep clean your entire bathroom^{32 -and/or- 34}
- [Deep] Clean [Your] [Entire^P] **insert surface(s) from Table 1 -and/or- insert surface material(s) from Table 3 -and/or- Mold Stains -and/or- Mildew Stains -and/or- Hard Water Stains -and/or- Rust Calcium & Lime -and/or- Dirt -and/or- [Tough] Grime -and/or- [Tough] Stains [in Half the Time]³⁵**
- [Deep] Clean [Your] Crevices -and/or- Cracks-and/or- Corners -and/or- [Tight] Spaces -and/or- [Tight] Spots -and/or- Angles [in Half the Time]³⁵
- Degreaser
- Degreases
- Delivers the trusted power of Clorox®
- Deodorizes
- Deodorizes and has a clean, fresh scent -or- fragrance
- Destroy[s] -and/or- Penetrate[s] Mold Stains -and/or- Mildew Stains -and/or- Soap Scum -and/or- Dirt -and/or- [Tough] Grime -or- Stains -and/or- Hard Water Stains -and/or- Rust, Calcium & Lime [with Precision] [Everywhere^P]
- Destroys -and/or- Eliminates stains in the kitchen -or- bath
- Destroys -and/or- Eliminates stains on contact
- Destroys -and/or- Eliminates stains without scrubbing
- Destroys -and/or- Eliminates tough stains -or- messes -or greasy dirt
- Destroys -and/or- Eliminates the -or- your [kid's] toughest messes -or- grime -or- stains
- Destroys [challenging] bathroom stains
- Direct-[spray] [aim] trigger [option] [for better [bleach] control]
- Dominate the Details
- Dual-control [nozzle -or- trigger] [option for better [bleach] control] [spray and foaming option]
- [Easily] removes -or- cleans tough bathroom -and/or- restroom -and/or- kitchen -and/or- household -and/or- office -and/or- workplace soils -or- **insert soil(s)/stain(s) from Table 4**[!]
- Easy Drop Delivery -and/or- Refill
- Easy Spray -or- Empt-Ease -or- Reliaspray -or- Spray-All [Bottle] [Technology]
- Economy [**insert size 32 fl oz and less**] Size
- [Economy] refill [size]
- Eliminates **insert a number from 2-10x** more stains^{PP}
- Eliminates food odors like garlic and onion left behind in -or- on surfaces
- Eliminates -or- Destroys -or- Removes [[the] tough[est]] [pet] stains [the 1st time]
- Eliminates tough stains on **X** number of surfaces⁴⁷ **X is a number between 10 and 72**
- Eliminates [the Toughest] Stains -and/or- Mold Stains -and/or- Mildew Stains -and/or- Soap Scum -and/or- Grime -and/or- Dirt [the First Time Around]
- Eliminates the toughest stains the first time around
- Enhanced with Clorox® bleach for tough bathroom soils

- [Ergonomically] Designed to Work Hard[er] -or- Better -and/or- Fast[er] [for You]
- Fills -or- equal to **X XX**[fl] oz trigger [sprays]^u **X is a number between 2 and 10 and XX is a number between 12-32**
- Foam lasts longer [than spray]
- Foam [option -and/or- setting] sticks [it] to stains
- Foam [option -or- setting] sticks -or- stays -or- holds longer [than spray]
- Foam -or- Power Foam -or- Powerfoam -or- Foam Power -or- Foam Action for a deep clean
- Foam -or- Power Foam -or- Powerfoam -or- Foam Power -or- FoamAction [option -or- setting] sticks to stains [and absorbs grease]
- Foam or spray
- Foaming [action] [spray] stays where you spray
- Foaming -or- sudsing nozzle
- Foaming, stays where you spray
- Foaming [trigger -and/or- spray -and/or- nozzle] option [for better [bleach] control]
- Foaming trigger [option] [for more accurate [bleach] application]
- For 32 fl oz [bottle]: **to appear above or prior to any text that is placed on the boot because it's obscured on the 32 oz bottle by the boot or shrink-wrap. This applies to a value pack with 64 fl oz and 32 fl oz bottles.**
- For 64 fl oz [bottle]: **To appear above or prior to any text that is placed on the boot because it's obscured on the 64 oz bottle by the boot or shrink-wrap. This applies to a value pack with 64 fl oz and 32 fl oz bottles.**
- For a cleaner -and/or- fresher bathroom -and/or- restroom -and/or- kitchen -and/or- home -or- house -and/or- place -or- work -or- office place
- For daily [use] [cleaning]
- Freshens [the -or- your] bathroom -and/or- restroom -and/or- kitchen -and/or- home -or- house -and/or- place -or- work -or- office place
- Gentle [Enough] [& Powerful] [for [Daily] Use] on **insert surface(s) from Table 1** -and/or- **insert surface material(s) from Table 3**
- Gentle [& Powerful] [Enough] [for [daily] Use] on surfaces
- Get -or- Spray Every Drop[!]^[TM -or- ®]
- [Great] for [the] schools -and/or- classrooms -and/or- work -and/or- [the] office
- [Great] for [use on] kid's play -and/or- pet living areas[△]
- Great on -or- Ideal for -or- Works on -or- Clean[s] -or- Reach[es] -or- Scrub[s] -or- Conquer[s] Crevices -and/or- Cracks -and/or- Corners -and/or- [Tight] Spaces -or- Spots -and/or- Angles
- Great on -or- Ideal for -or- Works on -or- Clean[s] -or- Reach[es] -or- Scrub[s] -or- Conquer[s] **insert surface(s) from Table 1** -and/or- **insert surface material(s) from Table 3**
- Great on -or- Ideal on -or- Works on -or- Clean[s] -or- Reach[es] -or- Scrub[s] -or- Conquer[s] Mold Stains -and/or- Mildew Stains -and/or- Soap Scum -and/or- Dirt -and/or- [Tough] Grime - and/or- Hard Water Stains -and/or- Rust, Calcium & Lime -and/or- [Tough] Stains
- [Great on] **Xx** -or- times More Surfaces⁴⁶ **X is a number between 2-10**
- Great on 100s of surfaces [around your home] -or- [including where kids and pets play]
- Great for use on[:] **insert Use Surfaces from Table 1 -and/or- Use Sites from Table 2**⁴⁷
- Great -or- Gentle -or- Kind on surfaces [that your family uses every day -or- around your home -or- where kids and pets play]
- Great where kids [and pets] play
- Good for -or- Contains [Over] 30[+] [Shower -and/or- Tub] [Quick] Cleans
- Has -or- Leaves a clean scent -or- fragrance
- **Insert a number between 2-10X** Better -and/or- More -and/or- Fast[er] [Scrubbing] Power -and/or- Strength³⁵
- [instantly starts to] Remove[s] stains [before your eyes]⁴⁷
- Institutional Size
- Industrial Size
- Last Drop Access
- Leaves kitchen -and/or- bathroom surfaces [clean and] sanitary
- [Light] [effervescent] foam clings to surfaces allowing you to see exactly where you applied it
- Lightly scented
- Low -or- no foam -or- suds nozzle
- Made in the USA of Globally sourced materials
- Made in the USA, with US and imported ingredients
- Made -or- designed -or- formulated with your comfort in mind⁵⁰
- Made -or- designed -or- formulated for your peace of mind⁵⁰
- Made without -or- formulated without [packaging] [formula] dyes
- Makes [cleaning] [your job] easier [at work -or- in the kitchen -and/or- bathroom -and/or- house -and/or- work -or- office place]
- Maximum cleaning, minimum effort
- Medium **insert size 24 fl oz and less** -and/or- [Size]
- Mild -or- subtle -or- light scent -or- fragrance
- More Savings, Less Waste^[!]²⁹
- Multi-[action] [control] nozzle -or- trigger [option for better [bleach] control]
- Multi-[action] [control] nozzle -or- trigger [spray and foaming option]
- Multi-Purpose -or- Multi-Use -or- Multi-Room -or- Multi-Surface [Spray] Cleaner [with bleach]
- Multi-Purpose -or- Surface [cleaner]
- Multi Surface Cleaning
- Multi Surface Stain Removal
- Navigates -or- Gets into Tight Spaces -and/or- Crevices [Easily -or- with Ease]
- Never Miss a Spot
- [New formula,] [same] powerful [Clorox] clean⁴⁹
- [New] low odor -or- fragrance [formula -or- bleach]
- No [artificial -or- added] color -or- dye[s]
- No gloves [required -or- needed]
- No heavy perfumes
- Non-corrosive on surfaces⁵¹
- Non -or- no sticky residue [left behind]
- Not harmful to septic systems
- Not just for grease! Destroys -and/or- Eliminates stains from coffee -and/or- juice -and/or- wine -and/or- tea -and/or- soda [on contact]
- [On] [hard,] [nonporous surfaces] [the -or- this product will not damage]: **insert use surfaces from Table 1** -and/or- **insert surface material(s) from Table 3**
- One-step [multi-surface] cleaner
- [[Package] Includes -or- Covers -or- Good For] **X** Mon[ths] of [a] Clean Showers -and/or- Tubs **X is a number between 2 and 12**
- [Package] Made w/ **x%** recycled plastic ^[41] **X is a number between 1 and 100%**
- [Packaging] -or [Formula] Made -or- produced with 100% renewable energy
- Patented design bottle
- Peel label back to view additional directions for use and usage instructions

- Penetrates -and/or- removes -and/or- eliminates -and/or- destroys tough [*insert use site(s) from Table 2*] stains -and/or- *insert soil(s)/stain(s) from Table 4*
- Penetrates for [a] Deep Clean
- Penetrates grease & grime
- Penetrating foam for [a] scrub-free clean
- Pleasant fragrance
- Powered by Clorox® bleach³⁸
- Powerful clean, less effort
- Powerful clean with less scrubbing
- [Powerful Clean,] Less [harsh] [bleach] smell -or- odor⁴⁶
- [powerful cleaning,] [now with] Less [bleach] odor -or- smell⁴⁶
- Powerful cleaning formula
- [Pre][loaded with [the] [Power of] Clorox® cleaner
- Prevents -or- reduces -or- eliminates over-spray
- Produced in a facility running on 100% renewable energy
- Refillable -and/or- reusable packaging
- Refresh your Shower [Daily] -or- A Fresh Shower Every Day
- Removes -and/or- cleans -and/or- bleaches out -and/or- cuts [mold stains] [and] [mildew] stains.
- Removes -and/or- cleans -and/or- bleaches [out] -and/or- cuts through -and/or- tough on [tough] stains *insert stain(s)/soils(s) from Table 4*
- Removes -and/or- Eliminates -and/or- Gets rid of -and/or- Melts away tough [soap scum] [bathroom -and/or- restroom -and/or- kitchen -and/or- household -and/or- office -and/or- workplace] [dirt -or- soils -or- grime]]⁴¹
- Removes food stains
- Removes odors
- Removes -or- Eliminates -or- Destroys [your- or- the] [toughest] stains
- Remove[s] stains *X* times -or- *x* faster⁴⁸ *X is a number between 10 and 99*
- Removes stains & deodorizes
- Removes stains on contact
- Removes stains without scrubbing
- Removes tough stains -or- messes -or- greasy dirt
- Removes tough stains, fingerprints, bathroom soils, crayon marks, heel marks, pencil marks, grease and dirt
- Removes [stubborn -and/or- stuck-on] stains
- Removes wine, coffee, grease, ketchup, mold stains and more
- Restore your *insert surface(s) from Table 1*'s Shine
- Safe for use on *insert surface materials from Table 3*
- Safe on *insert number based on approved surface materials* [household] surface materials!
- Safe to -or- for use on *insert surface material(s) from Table 3*
- Same {Clorox} stain removal power you already know and/or trust⁴⁹
- Saves a shopping trip¹⁵
- Scratch-Free -or- Non-Scratch
- Scrub -and/or- Brush Away [Tough] Mold Stains -and/or- Mildew Stains -and/or- Soap Scum -and/or- Dirt -and/or- [Caked on] Grime -and/or- Hard Water Stains -and/or- Rust Calcium & Lime -and/or- Stains
- Scrub Less
- See back panel for additional directions for use and usage instructions
- Great on high-touch surfaces
- Sensitive strength⁵²
- [Simply -or- Easily] [Press Button to] Dispense Cleaner -or- Spray, Scrub, [then -or- &] Rinse [& Wipe [Away]]
- [Single-Handedly] Conquer[s] [your] Crevices -and/or- Cracks -and/or- Corners -and/or- [Tight] Spaces -and/or- [Tight] Spots -and/or- Angles
- [Single-Handedly] Conquer [your] *insert surface(s) from Table 1* -and/or- *insert surface material(s) from Table 3* -and/or- Everywhere^P
- *X* Month supply^[!]^{□□□} *X is a number between 2-12*
- Small *insert size 16 fl oz and less* -and/or- [Size]
- Smart Tube^[®]^[™] Technology
- [Specially] [Formulated to] Remove[s] -or- Tough on -or- Powers Through Mold Stains -and/or- Mildew Stains -and/or- Soap Scum -and/or- Dirt -and/or- Grease -and/or- [Tough] Grime -and/or- [Tough] Stains -and/or- Hard Water Stains -and/or- Rust, Calcium & Lime
- Spray for speed -and/or- coverage -and/or- foam for power -or- tight areas -and/or- tough stains
- Spray Formula
- Stain -and/or- odor shield[△]
- Store near your Shower -and/or- Tub [so it's always ready] [for [a] Quick Clean]^{□□}
- Sudsing -or- foaming action
- Tackle[s] -and/or- Remove[s] -and/or- Destroy[s] -and/or- Penetrate[s] Mold Stains -and/or- Mildew Stains -and/or- Soap Scum -and/or- Dirt -and/or- Grime -and/or- Build-Up
- Tackles dirt and grime
- Take [the Cleaning Power of] Clorox® [to -or- Max[imum] Contact in -or- on -or- for your -or- Any -or- Every -or- All] *insert surface(s) from Table 1* -and/or- *insert surface material(s) from Table 3* Everywhere^P
- Take [the Cleaning Power of] Clorox® [to -or- Max[imum] Contact in -or- on -or- for [your -or- Any -or- Every -or- All] Crevices -and/or- Cracks -and/or- Corners -and/or- [Tight] Spaces -or- Spots -and/or- Angles
- Targeted [foaming] spray action [for better [bleach] control]
- [Teachers -and/or- Parents] Back to School means back to germs
- The [convenient -and/or- easy -and/or- effective] way to keep your home -or- house -and/or- bathroom -and/or- kitchen -and/or- office -and/or- work -or- office [area -or- place] looking "just cleaned"
- The cleaning power -and/or- effectiveness [that easily removes tough bathroom -and/or- restroom -and/or- kitchen -and/or- household dirt -or- soils -or- grime [like soap scum]]^[!]
- [The] Cleaning Power of Clorox®
- The only bathroom cleaner with the cleaning power of Clorox® bleach
- The -or- Our Ultimate Mold Stain -and/or- Mildew Stain -and/or- Soap Scum -and/or- Dirt -and/or- [Tough] Grime -and/or- Hard Water Stain -and/or- Rust, Calcium & Lime -and/or- [Tough] Stain Remover
- The smell of clean
- [Thick] foam starts to work on contact
- This bottle is made of *X*% post-consumer recycled [HDPE] plastic *X is a number between 1-100*
- [This product is] suitable for septic [systems] -and/or- wastewater systems -or- treatment plants
- [This product - or- package is] Formulated -or- Made with *X*% renewable energy⁴⁰ *X is a number between 1-100*
- Tough on *insert soil(s)/stain(s) from Table 4* -and/or- [other -and/or- tough] *insert use site(s) from Table 2* soils^[!]
- Twin -or- Value Pack

- Ultra Fresh
- [Unbeatable] foam [option -and/or- setting] grabs -and/or- holds -and/or- clings -and/or- sticks -and/or- grips -and/or- removes [to] [tough] stains
- Up to [a] **X%** [discount] [cheaper] [free][!]³⁰ **X is a number between 10-50**
- [Use as a] [Pourable] refill for this product -and/or- [multi-surface] cleaner
- Use -and/or- choose foam [option -and/or- setting] for [mildew] stains -and/or- grease
- [Use On:] [the product will not damage:] **insert use surface(s) from Table 1** -and/or- **insert surface material(s) from Table 3**
- Use on -or- For all -or- Both [White -and/or- Colored] Surfaces
- [Value -and/or- Economy -and/or- Budget] size -or- refill
- Warehouse [Club] Size
- Where to use this product -or- For use around -or- in -or- throughout the **insert use site(s) from Table 2**
- Whitens [before your eyes]
- Wipes out stains in kitchen and bath
- [With] [long] lasting foam
- Works -or- Effortless Clean the 1st time
- [Visit-or- Check [out] our website at] www.clorox.com [for more information] [on Clorox®]

Fragrance/Scent Descriptors

Any fragrance descriptor below can be preceded by bold -or- clean -or- crisp -or- fresh -or- good -or- great -or- invigorating -or- light -or- long-lasting -or- nice -or- pleasant -or- soothing -or- pleasing -or- refreshing -or- relaxing -or- strong -or- warm -or- cool

Any fragrance descriptor below can be followed with aroma -or- bouquet -or- fragrance -or- perfume -or- odor -or- scent -or- smell -or- essence -or- clean. Any combination of one or more of these fragrances may be used together with an &, + or and.

- Blue Mountain Air
- Citrus Blend [fragrance -or- scent]
- Citrus -and/or- Fresh -and/or- [Natural] Breeze
- Citrus Escape
- Clean Mist
- Clean Rinse
- Crisp -and/or- Sparkling -and/or- Lemon
- Crisp -or- Coastal Lemon
- Floral -and/or- Meadow [Fresh]
- Fresh Burst
- Fresh -and/or- Ocean Mist
- Fresh -or- Lemon Sparkle
- Fresh -or- Refreshing Blast
- Lavender
- Lemon Blossom and Orange
- Mountain -and/or- Fresh
- Pleasant Scent -or- Fragrance
- [Rain] Clean
- Zest -and/or- Cool Wave
- Original [scent]
- Pure -or- Revitalizing Clean
- Refreshing Citrus
- Refreshing Oasis
- Sparkling Fresh
- Spring Garden
- Sunny Linen
- Ultra Fresh

Table 1 Use Surfaces

<ul style="list-style-type: none"> • Appliance Exteriors • [Baby -and/or- Children's] Toys⁵³ • Baby Furniture • [Basement] Washable Walls • [Bath]Tubs • [Bathroom -and/or- Kitchen] Windowsills • Bed Frames • Bidets • Blinds • Cabinets • Cat -and/or- Dog -and/or- Pet Dishes⁵³ -or- Soiled Surfaces • Ceramic Floors⁴⁴ • [Classroom] Desks • Cribs • Desks • [Diaper] Changing Tables • Diaper Pails • [Dining -or- Kitchen -or- Play] Tables • Dish Pails 	<ul style="list-style-type: none"> • Dish Racks • Doorknobs • Drawers^P • Exam[ination] Tables • Finished wood surfaces⁴⁴ • Food Serving Areas^P • Freezer exteriors³⁷ • Garbage Cans • Glazed Ceramic -or- Porcelain³² Tile • Glazed Tile • Hand Dryer Buttons • Highchairs⁵³ • Homes • Households • [Outside of] Appliances [such as] [Refrigerators, Microwaves, Freezers]³⁷ • [Kitchen] Counter[top]s • Laminated Surfaces • Lamps • Light Switches • [Manual] Pencil Sharpeners • Many Crib Surfaces^P 	<ul style="list-style-type: none"> • Microwave exteriors • [No Wax -and/or- Washable] Floors⁴⁴ • Outdoor Furniture (except cushions and wood frames) • Outside of Toilets • Ovens Exteriors • Paper Towel Dispensers -or- Holders • [Patient] Chairs • Picnic Tables (non-wooden) • Plastic laundry baskets -and/or- hampers • Plastic Mattress Covers • Plastic Shower Curtains • Porta-Potties -or- Portable Bathrooms • Range Hoods • Refrigerator Doors -or- door handles • Refrigerator exteriors • Restaurant Highchairs⁵³ • Salad Bars -and/or- Buffets -and/or- Cafeteria Sneeze 	<ul style="list-style-type: none"> • Guards • [School] Toys • Shelves^P • Shower Tracks -and/or- stalls • Sinks • Stove[top][s]³⁷ • [Table]tops • The home^P • Toilet bowl exteriors • Urinals exteriors • Empty Wading Pools • [Water -and/or- Drinking] Fountain [Toggle]s • Vanity tops • Vinyl Tile • Wheelchairs
---	---	---	---

Table 2 Use Sites

<ul style="list-style-type: none"> • [[Air]plane] Lavatories • Automobiles • Basements • Bathrooms • Bedrooms • Birdbaths • Boats • Bowling Alleys • Businesses • Butcher Shops • Cafeterias • Campers • Campgrounds • Cars • Child[ren]'s -or- Kids' [Play] Rooms • Churches • College [dorms] • Classroom -and/or- School -and/or- Play Areas • Day-Care Centers • Dens • Dining Rooms • Dorm[itorie]s • Dorm [rooms] 	<ul style="list-style-type: none"> • Dumpsters • [Elementary] Schools -and/or- Colleges -and/or- Universities • Exhaust Fans • Factory -or- Commercial -and/or- Treatment Plants • Family Rooms • Fitness Centers • Garages • Grocery Stores • Gym[nasium]s • Health Clubs • High-touch areas • Homes • Hotels • House[boat]s • Household [areas] • Industrial Facilities • Institutional Kitchens • Jungle Gyms • Kennels • Kitchens • Laboratories • Laundromats • Laundry Rooms 	<ul style="list-style-type: none"> • Living Rooms • Locker Rooms • Military Installations • Mobile Homes • Motels • Motorboats • Mud Rooms • Nurseries • Offices • Patios • Pet -and/or- Cat -or- Dog Areas • Pet -and/or- Cat -and/or- Dog Runs • [Picnic] Tables • Playground Equipment • Playrooms • Porches • Recreational Centers -or- Facilities • Recycling Bins • Restaurants • Restrooms • RVs • Schools 	<ul style="list-style-type: none"> • [School -and/or- City -and/or- Public Transit -and/or- Commuter] Buses • Shelters • Storage areas -and/or- rooms • Studies • Supermarkets • Telephones • Trailers • Train Interiors • Trash Cans • Trash Compactors • Vehicle [Interiors -and/or- Exteriors] • Veterinary Clinics • Waiting Rooms
--	---	---	---

Table 3 Surface Materials

- | | | | |
|---|--|---|---|
| <ul style="list-style-type: none">• Chrome• Corian[®][^λ]• Enamel• Fiberglass | <ul style="list-style-type: none">• Finished -and/or- Sealed
[hard]wood^{μμ}• Formica[®][^{λλ}]• Linoleum• Marlite[®][^{λλλ}] | <ul style="list-style-type: none">• Metal• Plastic• Plastic Laminate• Glazed Porcelain³²• Resilient Flooring | <ul style="list-style-type: none">• Sealed Granite• Stainless Steel• Synthetic -and/or-
Cultured Marble |
|---|--|---|---|

Table 4 Stains/Soils

- | | | | |
|--|--|--|--|
| <ul style="list-style-type: none">• Bathtub rings• Coffee• Dirt• Food• [Food] stains | <ul style="list-style-type: none">• Grease• Grime• Hard water deposits <i>insert use
site(s) from Table 2</i> dirt
-and/or- stains | <ul style="list-style-type: none">• Juice• Mineral deposits• Soap scum• Soils• Tea | <ul style="list-style-type: none">• Toilet rings• [Tough -and/or- greasy
-and/or- kitchen] dirt |
|--|--|--|--|

Footnotes

- ¹⁵ when compared to -or- vs. purchasing one 32 [fl] oz **insert this product ABN** trigger spray
- ¹⁹ Cleans, Disinfects & Whitens
- ²¹ Rhinovirus [Type] 14 -or- Human Coronavirus, Influenza A Virus
- ²² Rhinovirus [Type] 14 -or- Human Coronavirus
- ²³ Influenza A Virus
- ²⁴ Trichophyton interdigitale
- ²⁸ Staphylococcus aureus, Klebsiella pneumoniae
- ²⁹ **X%** -or- ____% less plastic when compared to -or- vs. -or- in comparison to **insert a number between 2-10** 32 [fl] oz -or- 2 ____ [fl] oz Clorox® Clean-Up® Cleaner with Bleach -or- **insert this product ABN** trigger sprays **X is a number between 20-99**
- ³⁰ when compared to -or- vs. 32 [fl] oz **insert this product ABN** trigger [spray] in most stores, based on average retail price -and/ or- volume
- ³² Avoid prolonged contact with porcelain
- ³⁴ Use as Directed
Avoid contact with clothes, fabric, unfinished wood, rubber, painted and paper surfaces. Do not use on steel, aluminum, silver or chipped enamel. [APPLY CAREFULLY - This product contains bleach.]
- ³⁵ Than a Toothbrush -and/or- [Scrubby] Sponge and Water
- ³⁶ When used according to the disinfection directions
- ³⁷ [allow to come to] room temperature prior to treatment
- ³⁸ for cleaning only
- ³⁹ On hard non-porous surfaces. Use as directed.
- ⁴⁰ produced in a facility running on 100% renewable energy
- ^[41] Made with **X%** Post-consumer recycled plastic/PCR/pre-consumer and/or post-industrial recycled plastic
- ⁴⁴ sealed floors
- ⁴⁵ Salmonella enterica, [(Salmonella)], Staphylococcus aureus [(Staph)], Cold virus (Rhinovirus [Type] 14), Flu virus [(Influenza A Virus)]
- ⁴⁶ vs[.] **insert ABN from EPA Reg No 5813-21**
- ⁴⁷ when used as directed
- ⁴⁸ when used as directed vs[.] **insert ABN from EPA Reg No 5813-73**
- ⁴⁹ same as **insert ABN from EPA Reg No 5813-21**[.] when used as directed
- ⁵⁰ No gloves required
- ⁵¹ Not for use on skin, when used as directed
- ⁵² lower active ingredient level vs[.] **insert ABN from EPA Reg No 5813-21**
- ⁵³ requires a potable water rinse
- [‡ Viruses]
- μ of this product
- μμ Do not allow puddles of product to remain on surface. Do not use on unsealed, unfinished, visibly worn, oiled or waxed wood surfaces. Product can discolor wood surfaces if misused. Test a small area first.
- ∞∞ keep out of reach of children
- ∞∞∞ based on average volume per month usage cycle
- ℙ [on] hard, nonporous surfaces [of]
- ℙℙ vs. a Clorox® non-bleach cleaner
- ℓ experience compared to historical Clorox® spray packaging
- ℓℓ Pet dander, dust mite matter -or- particles[, cockroach matter -or- particles]
- *50% less plastic vs. five -or- 5 32 [fl] oz trigger sprays **180 fl oz bottle** -or- 55% less plastic vs. four -or- 4 32 [fl] oz trigger sprays **136 fl oz bottle** -or- 56% less plastic vs. four -or- 4 32 [fl] oz trigger sprays **128 fl oz bottle** -or- 46% less plastic vs. two -or- 2 32 [fl] oz trigger sprays **64 fl oz bottle** -or- 28% less plastic vs. one -or- 1 32 [fl] oz trigger spray **32 fl oz bottle** -or- ____% less plastic vs. **insert # of bottles** [fl] oz trigger spray
- ✧Kills SARS-CoV-2 (USA-WA1/2020) on hard, nonporous surfaces
- λ Corian® is a [registered] trademark of [E. I. du Pont de Nemours and Company] [a subsidiary of] [E. I. du Pont de Nemours and Company] [or one or more of its affiliates]
- λλ Formica® is a [registered] trademark of [The Diller Corporation] [a subsidiary of] [Formica] [Formica Corporation] [or one or more of its affiliates]
- λλλ Marlite® is a [registered] trademark of [Marlite, Inc.] [a subsidiary of] [Marlite, Inc.] [or one or more of its affiliates]
- △ on non-food contact surfaces. Allow product to air dry