



U.S. ENVIRONMENTAL PROTECTION AGENCY
 Office of Pesticide Programs
 Antimicrobials Division (7510P)
 1200 Pennsylvania Ave., N.W.
 Washington, D.C. 20460

EPA Reg. Number:

5813-130

Date of Issuance:

1/10/22

NOTICE OF PESTICIDE:

Registration
 Reregistration
 (under FIFRA, as amended)

Term of Issuance:

Conditional

Name of Pesticide Product:

Thorn

Name and Address of Registrant (include ZIP Code):

The Clorox Company
 c/o PS&RC; PO Box 493
 Pleasanton, CA 94566

Note: Changes in labeling differing in substance from that accepted in connection with this registration must be submitted to and accepted by the Antimicrobials Division prior to use of the label in commerce. In any correspondence on this product always refer to the above EPA registration number.

On the basis of information furnished by the registrant, the above named pesticide is hereby registered under the Federal Insecticide, Fungicide and Rodenticide Act.

Registration is in no way to be construed as an endorsement or recommendation of this product by the Agency. In order to protect health and the environment, the Administrator, on his motion, may at any time suspend or cancel the registration of a pesticide in accordance with the Act. The acceptance of any name in connection with the registration of a product under this Act is not to be construed as giving the registrant a right to exclusive use of the name or to its use if it has been covered by others.

This product is conditionally registered in accordance with FIFRA section 3(c)(7)(A). You must comply with the following conditions:

1. Submit and/or cite all data required for registration/reregistration/registration review of your product under FIFRA when the Agency requires all registrants of similar products to submit such data.

Signature of Approving Official:

Eric Miederhoff
 Product Manager 31
 Regulatory Management Branch I
 Antimicrobials Division (7510P)
 Office of Pesticide Programs

Date:

1/10/22

1. You are required to comply with the data requirements described in the DCI identified below:
 - a. ADBAC GDCI: 069105-30882; 069105-1679
 - b. DDAC GDCI: 069149-30869; 069149-0681

You must comply with all of the data requirements within the established deadlines. If you have questions about the Generic DCI listed above, you may contact the Reevaluation Team Leader (Team 36): <http://www2.epa.gov/pesticide-contacts/contacts-office-pesticide-programs-antimicrobial-division>

2. Make the following label changes before you release the product for shipment:
 - Revise the EPA Registration Number to read, “EPA Reg. No. 5813-130.”
3. Submit one copy of the final printed label for the record before you release the product for shipment.

Because you have opted to add statements pertaining to emerging viral pathogens to your label as described in the August 19, 2016, Guidance to Registrants: Process For Making Claims Against Emerging Viral Pathogens Not On EPA-Registered Disinfectant Labels (“Guidance”), https://www.epa.gov/sites/production/files/2016-09/documents/emerging_viral_pathogen_program_guidance_final_8_19_16_001_0.pdf, you are subject to the following additional terms of registration:

1. You may make statements pertaining to emerging viral pathogens only through the following communications outlets: technical literature distributed exclusively to health care facilities, physicians, nurses and public health officials, "1-800" consumer information services, social media sites and company websites (non-label related). These statements shall not appear on marketed (final print) product labels.
2. Your statements pertaining to emerging viral pathogens must adhere to the format approved on the Agency-accepted master label.
3. You may make statements pertaining to emerging viral pathogens only upon a disease outbreak that meets all the following criteria:
 - a. The causative organism must be a virus that causes an infectious disease that has appeared in a human or animal population in the U.S. for the first time, or that may have existed previously but is rapidly increasing in incidence or geographic range.
 - i. For human disease, the outbreak is listed in one of the following Centers for Disease Control (CDC) publications:
 - A. CDC Current Outbreak List for “U.S. Based Outbreaks” (www.cdc.gov/outbreaks),
 - B. CDC Current Outbreak List for “Outbreaks Affecting International Travelers” with an “Alert” or “Advisory” classification (www.cdc.gov/outbreaks) (also

- released through the CDC's Health Alert Network (HAN) notification process)
- C. Healthcare-Associated Infections (HAIs) Outbreaks and Patient Notifications page (www.cdc.gov/hai/outbreaks)
- ii. For animal disease, the outbreak is identified as an infectious disease outbreak in animals within the U.S. on the World Organization for Animal Health (OIE) Weekly Disease Information page (www.oie.int/wahis_2/public/wahid.php/Diseaseinformation/WI).
- A. The CDC or OIE has identified the taxonomy, including the viral family and/or species, of the pathogen and provides notice to the public of the identity of the emerging virus that is responsible for an infectious disease outbreak. Based on the taxonomy of the outbreak pathogen identified by the CDC or OEI, the pathogen's viral subgroup is enveloped virus.
- B. The virus can be transmitted via environmental surfaces (non-vector transmission), and environmental surface disinfection has been recommended by the CDC, OIE or EPA to control the spread of the pathogen.
4. You may begin communicating statements pertaining to emerging viral pathogens only upon CDC or OIE's publication per term 3.a. of an outbreak of an emerging viral pathogen meeting all of the criteria of term 3. You must cease and remove all such non-label communications intended for consumers no later than 24 months after the original publication of the outbreak per term 3.a., unless the Agency issue written guidance to the contrary due to continued public health concerns. The emerging pathogen claim language may remain on the master label.
5. Terms from points 1 through 4 above shall become immediately void and ineffective if registration for use against Human Rotavirus [ATCC VR-2018] [Strain WA] is suspended or cancelled or no longer meets the criteria for a disinfectant claim (see EPA Product Performance Test Guideline 810.2200). In addition, terms B.1 through B.4 above shall become immediately void and ineffective upon your receipt of evidence of ineffectiveness against any pathogen in a less-resistant Spaulding category.

Should you wish to add/retain a reference to the company's website on your label, then please be aware that the website becomes labeling under the Federal Insecticide Fungicide and Rodenticide Act and is subject to review by the Agency. If the website is false or misleading, the product would be misbranded and unlawful to sell or distribute under FIFRA section 12(a)(1)(E). 40 CFR 156.10(a)(5) list examples of statements EPA may consider false or misleading. In addition, regardless of whether a website is referenced on your product's label, claims made on the website may not substantially differ from those claims approved through the registration process. Therefore, should the Agency find or if it is brought to our attention that a website contains false or misleading statements or claims substantially differing from the EPA approved registration, the website will be referred to the EPA's Office of Enforcement and Compliance.

If you fail to satisfy these data requirements, EPA will consider appropriate regulatory action including, among other things, cancellation under FIFRA section 6(e). Your release for shipment of the product

constitutes acceptance of these conditions. A stamped copy of the label is enclosed for your records. Please also note that the record for this product currently contains the following CSFs:

- Basic CSF dated 08/16/2021
- Alternate CSFs A02; A04; A05; A07; A08; A10-A17 dated 08/16/2021

The following alternate brand names have been added to the product record:

- Clorox® Disinfecting Mist Max
- Clorox® Disinfecting Mist Ultra
- Clorox® Turbo™ Max Disinfecting Cleaner for Sprayer Devices
- Clorox® Turbo™ Ultra Disinfecting Cleaner for Sprayer Devices
- Clorox® Turbo™ Disinfecting Cleaner Max for Sprayer Devices
- Clorox® Turbo™ Disinfecting Cleaner Ultra for Sprayer Devices

If you have any questions, you may contact Joe Daniels via email at daniels.joseph@epa.gov.

Enclosure: Label

Label identification

THORN, EPA Reg. No. 5813-*to be determined*

R0743019

9:15 1/7/22

ACCEPTED

01/10/2022

Under the Federal Insecticide, Fungicide
and Rodenticide Act as amended, for the
pesticide registered under

EPA Reg. No. 5813-130

Formatting notes (applicable for all claims)

Now[!] -and/or- **New[ly][!]** -and/or- **Improved[!]** may be added anywhere to a claim and will only be used for the first 6 months of product on shelf.

Optional text may be placed anywhere on the label -and/or- container.

Bold, italicized text is information for the reader and is not part of the label.

Bracketed information is optional text.

All footnotes are on the last page, unless they are part of EPA's mandated text.

The word "and" may be substituted with "&". Plural words may be used in their singular form or singular words may be used in their plural form unless otherwise specified in 40 CFR.

All directions may be written in numbered form or in paragraph form.

All use sites and/or use surfaces on the label may be listed in conjunction with an image of the use site and/or use surface.

Highlighted text is new. Strike-through text means removed.

THORN

KEEP OUT OF REACH OF CHILDREN

CAUTION

See back -and/or- side panel -and/or- fold-out booklet for additional information -and/or- precautionary statements [and] [directions for use][and] [storage and disposal]

ACTIVE INGREDIENTS:

Alkyl (50% C14, 40% C12, 10% C16)

Dimethyl Benzyl Ammonium Chloride 0.250%

Didecyl dimethyl ammonium Chloride 0.250%

OTHER INGREDIENTS: 99.500%

TOTAL: 100.000%

Package made from *insert number*% post-consumer recycled plastic.

[Net Contents] _____

Actual contents will be inserted on container label _____

PRECAUTIONARY STATEMENTS

HAZARDS TO HUMANS AND DOMESTIC ANIMALS

CAUTION: Causes moderate eye irritation. Avoid contact with eyes, skin or clothing. Wash thoroughly with soap and water after handling and before eating, drinking, chewing gum, using tobacco or using the toilet.

FIRST AID: If in eyes: Hold eye open and rinse slowly and gently with water for 15-20 minutes. Remove contact lenses, if present, after the first 5 minutes, then continue rinsing eye.

[If on skin: Take off contaminated clothing. Rinse skin immediately with plenty of water for 15-20 minutes.]

Call a poison control center or doctor for treatment advice. Have the product container or label with you when calling a poison control center or doctor or going for treatment. [For general information on product use, call the National Pesticides Information Center at 1-800-858-7378.] For medical emergencies, call the poison control center at 1-800-222-1222.

Questions or Comments? [Please] visit www.clorox.com or call [us toll free at] 1-800-227-1860 -or- (800) 227-1860.

For more [product -and/or- ingredient] information, visit www.IngredientsInside.com -or- www.smartlabel.org.

Mfd. for The Clorox Company, 1221 Broadway, Oakland, CA 94612.

© YYYY Made in [the] U.S.A. [of global components -and/or- ingredients.]

Clorox is a registered trademark of The Clorox Company.

EPA Reg. No. 5813-*to be determined*

EPA Est. No. 5813-CA-6 (TPP), GA-2 (VG), GA-4 (MR), IL-2 (VF); 8251-OH-1 (Q6), OH-2 (Q6), WI-2 (KW), WI-3 (KV), WI-5 (UQ); 50757-WI-1 (VN), WI-3 (2J); 52631-NJ-1 (UW); 58455-IN-1 (C6), IN-2 (01); 56952-AR-1 (RL), WI-1 (RK), WI-2 (VV); 62401-NC-2 (PK), NJ-1 (JW); 71681-GA (JQ), IL-1 (03), IL-2 (24); 99201-TX-1 (U01X)

Beginning of batch code indicates Est. No.

Patents: www.thecloroxcompany.com/patents

For a Spanish translation of product directions -or- instructions -or- information, visit www.clorox.com.

Optional graphics. May be placed anywhere on label/container.



TURBO
ULTRA™

TURBO
MAX™

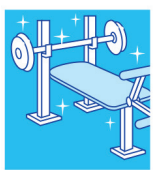
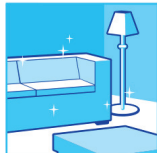
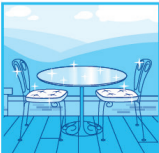
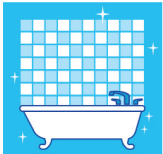
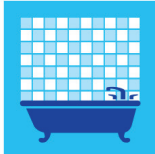
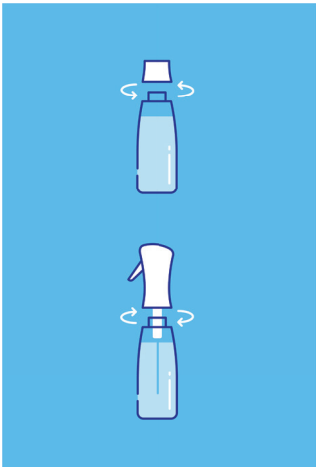
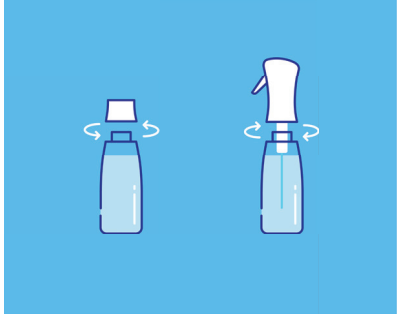
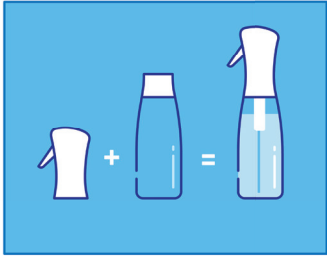
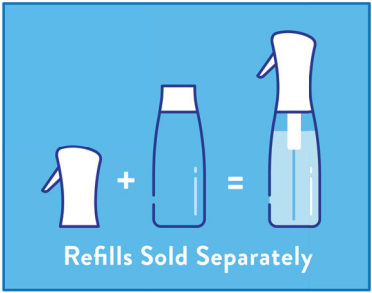
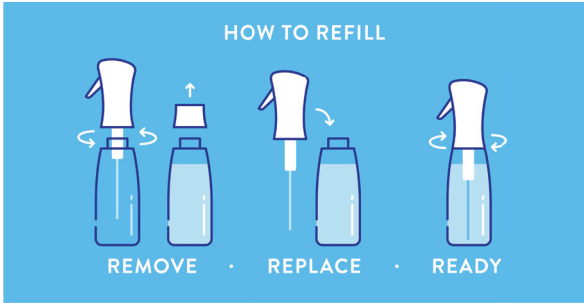
TURBO
™

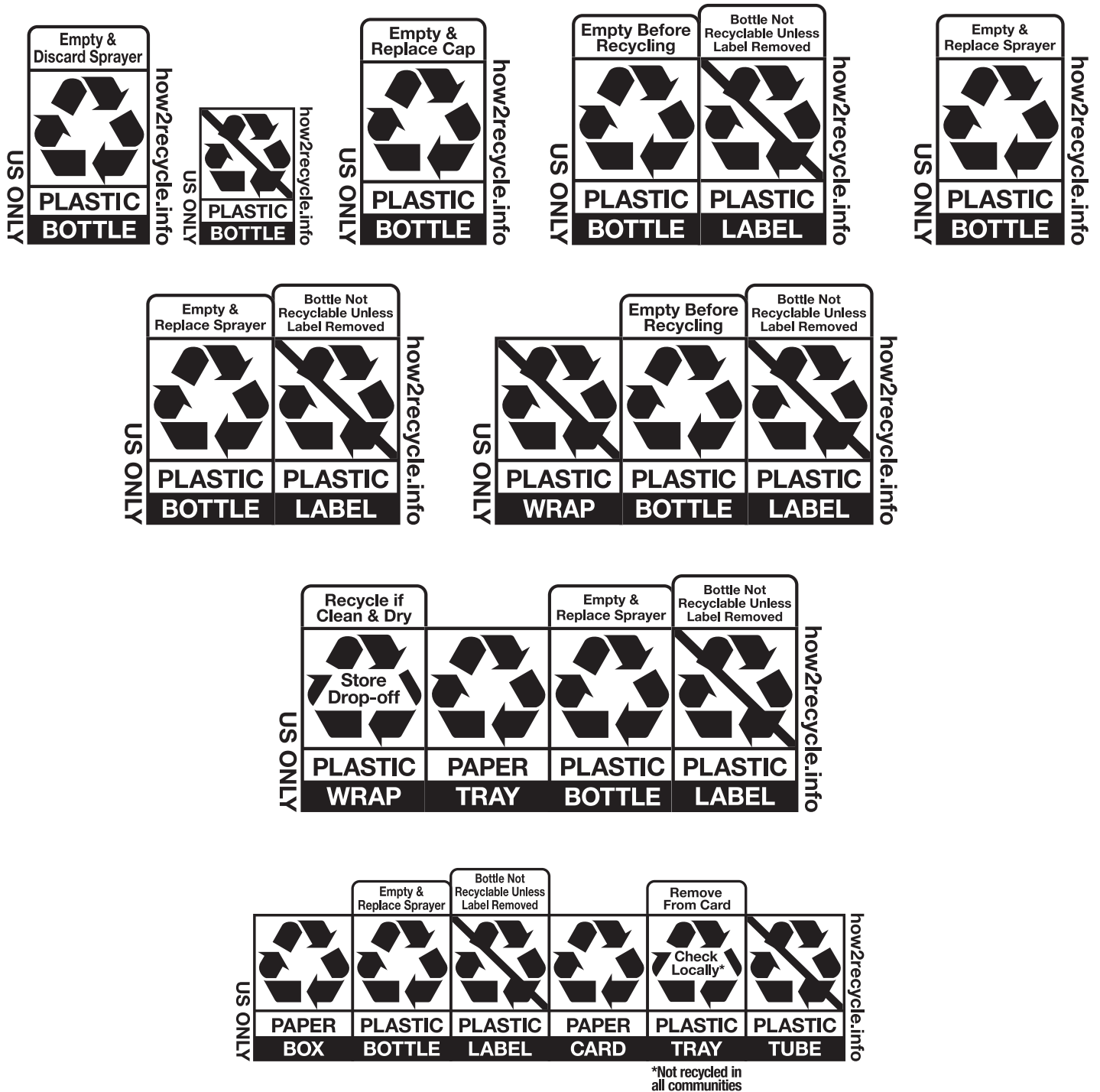
KILLS COVID-19 VIRUS*	PREVENTS BACTERIA** GROWTH FOR UP TO 24 HOURS	KILLS 99.9% OF VIRUSES* & BACTERIA
------------------------------	--	---



Kills COVID-19 virus*







Trigger Spray Use Directions:

To Operate:

Turn nozzle to [preferred usage] ["ON" position] [desired position]

Alternative for refillable bottle

To Refill [Bottle]: Remove trigger sprayer. Pour in product from refill container and replace trigger.

DIRECTIONS FOR USE

IT IS A VIOLATION OF FEDERAL LAW TO USE THIS PRODUCT IN A MANNER INCONSISTENT WITH ITS LABELING.

TO CLEAN and DEODORIZE:

Spray -or- Squirt -or- Apply to surface until visibly wet. [Allow to penetrate [soil -or- stain]]. Wipe clean with a [damp] cloth -or- sponge -or- paper towel.

To Clean [Lime Scale -and/or- Soap Scum -and/or- Greasy Soil]: Allow product to sit to penetrate soil before wiping clean. Repeat if necessary.

To Sanitize hard nonporous non-food contact surfaces: [One-Step Cleaner/Sanitizer] Squirt -or- Apply to surface until thoroughly wet. Surface must remain visibly wet for 60 seconds. Wipe clean with a [damp] cloth -or- sponge -or- paper towel. Preclean visibly soiled surfaces. [Kills -or- effective against] [99.9% of] ***Insert non-food contact sanitization bacteria from Organism Table.***

-or-

For labels that list To Sanitize hard nonporous non-food contact surfaces: Apply to surface until thoroughly wet. Surface must remain visibly wet for 60 seconds before wiping. Preclean visibly soiled surfaces.

-or-

To Sanitize for 24 hours on hard, nonporous non-food contact surfaces: Apply to surface until thoroughly wet. Surface must remain visibly wet for 5 minutes. Allow to air dry. Preclean visibly soiled surfaces.

-or-

To Sanitize Hard Non-porous, Non-food Contact Surfaces: FOR 24 HOURS performance: Apply to surface until thoroughly wet. Surface must remain visibly wet for 5 minutes. Allow to air dry. [Kills -or- effective against [99.9% of] ***Insert residual sanitization bacteria from Organism Table*** [for 24 hours]. Preclean visibly soiled surfaces.

Trigger Spray

[Hold container 6"-8" from surface and spray until visibly wet.]

To Sanitize -and/or- Disinfect: Spray surface until visibly wet. To sanitize, surface must remain visibly wet for 60 seconds. ***If Disinfect is in the header must add*** To disinfect, Surface must remain visibly wet for 5 minutes before wiping. Preclean visibly soiled surfaces.

To Disinfect against Bacteria -and/or- Viruses[‡] on hard, non-porous surfaces: Surface must remain visibly wet for 5 minutes. Then wipe with a [damp] cloth -or- sponge -or- paper towel. [Kills -or- effective against [99.9% of] ***Insert disinfection bacteria -and/or- viruses from Organism Table***]. Preclean visibly soiled surfaces.

For Hospital Disinfection against Bacteria & Viruses[‡] (One Step¹ Cleaner/Disinfectant): Spray [this product] 6-8 inches from hard, non-porous non-food contact surfaces until visibly wet. Surface must remain visibly wet for 5 minutes. Wipe dry. [Kills -or- effective against [99.9% of] ***Insert disinfection bacteria and viruses from Organism Table***] [in the presence of 5% blood serum.]

For labels that list medical premises and metal and/or stainless steel surfaces, one of the following statements must be used:

This product is not to be used as a terminal sterilant high-level disinfectant on any surface or instrument that (1) is introduced directly into the human body, either into or in contact with the bloodstream or normally sterile areas of the body, or (2) contacts intact mucous membranes but which does not ordinarily penetrate the blood barrier or otherwise enter normally sterile areas of the body. This product may be used to preclean or decontaminate critical or semi-critical medical devices prior to sterilization or high level disinfection.

For labels that list veterinary and/or farm and/or animal care use sites, the following statement will be used:

Use to disinfect and clean hard, nonporous surfaces such as feeding and watering equipment, cages, utensils, instruments, kennels, catteries, stables, etc. Remove all animals and feed from premises, animal transportation vehicles, crates, etc. Remove all litter, droppings, and manure from walls, floors, and surfaces of facilities occupied or traversed by animals. Empty all feeding and watering equipment. Spray surface until completely wet and let stand for five (5) minutes. Ventilate buildings and other closed spaces. Do not house animals or employ equipment until treated surfaces have been thoroughly rinsed with water and allowed to dry. Thoroughly scrub all treating, feeding, and watering appliances with soap or detergent, and rinse with potable water before re-use.

DO NOT USE on eating or cooking utensils, glasses, dishes or cookware. Not for use on food contact surfaces.

Not recommended for use on wool, silk, unfinished, oiled, or waxed wood surfaces, [upholstery, or washable fabric]. [For other surfaces, test in an inconspicuous area first.] [Test on an inconspicuous area for colorfastness.]

Does not harm most [kitchen -or- bathroom] surfaces.

Storage and Disposal: Residential Containers

Trigger bottle

STORAGE AND DISPOSAL: Store in areas inaccessible to children. Keep securely closed. Refillable container. Refill trigger bottle only with this product. If not refilling, discard in trash or offer for recycle. Do not reuse this trigger bottle for any other purpose.

Pourable container

STORAGE AND DISPOSAL: Store in areas inaccessible to children. Keep securely closed. Non-refillable container. Do not reuse or refill this container. Discard in trash or offer for recycle, if available.

Refillable bottle

STORAGE AND DISPOSAL: Store in original container in areas inaccessible to children. Securely close and store in a cool dry area. Refillable container. Only refill with this product. Recycle empty container if available or discard in trash.

Non-refillable containers

STORAGE AND DISPOSAL: Store in original container in areas inaccessible to children. Keep securely closed. Nonrefillable container. Do not reuse or refill this container. Place [container] in trash or offer for recycling.

Storage and Disposal: Institutional/Commercial Containers

STORAGE AND DISPOSAL: Do not contaminate water, food, or feed by storage or disposal.

PESTICIDE STORAGE: Store in original container in areas inaccessible to children. Keep securely closed.

PESTICIDE DISPOSAL: To avoid waste, use all material in this container according to label directions. If waste cannot be avoided, offer remaining product to an approved waste disposal facility or pesticide disposal program.

For Nonrefillable containers

CONTAINER DISPOSAL: Non-refillable container. Do not reuse or refill this container. Discard in trash or offer for recycling, if available. Discard in trash or offer for recycling if available.

For bottles intended to be refilled by the end-user

Do not reuse or refill this container except as described in the directions for use. Refill only with this product. [If not refilling] discard in trash or offer for recycling if available.

STORAGE AND DISPOSAL: Do not contaminate water, food, or feed by storage and disposal. Securely close and store in a cool dry area. Non-refillable container. Do not reuse or refill empty container. Recycle empty container if available or discard in trash.

Sanitizing Claims

- [60 seconds] [bacterial -or- sanitization] Sanitizer on hard, nonporous surfaces
- [60 seconds] Non-Food Contact Surface Sanitizer
- [Antibacterial] Mutli-Purpose Cleaner¹¹
- Antibacterial -or- Antibacterial Cleaner¹¹
- Cleaner and Sanitizer
- Cleans and sanitizes
- Kills 99.9% of bacteria [in 60 seconds]
- Non-food contact surface Sanitizer
- Sanitizing [Value] Pack
- Sanitization [against bacteria]
- Sanitizer -or- Sanitizes
- Sanitizes in [60 seconds]

24-hour Residual Sanitizing Claims

- 24 hour bacteria sanitization -or- bacteria shield
- 24 Hour Bacteria Shield
- 24 hours of protection from bacteria growth [even in high contact areas]^{3, ††}
- 24 hour peace of mind
- 24 hour sanitizing spray for hard, nonporous surface sanitizing -or- sanitization
- A product that gives you 24 hours peace of mind
- After 5 minutes, kills 99.9% of bacteria, and keeps killing for 24 hours.
- All day bacteria protection^{††}
- All day sanitization^{††}
- Continuous antibacterial sanitizing for up to 24 hours
- Sanitizes [against bacteria] for 24 hours
- Formulated with a [new] revolutionary technology that keeps your surfaces protected for 24 hours^P
- Helps you protect treated hard, non-porous surfaces from bacteria for 24 hours
- Helps you protect -or- defend -or- guard your treated hard, nonporous surfaces from bacteria
- Keeps killing [99.9% of] bacteria for up to 24 hours [even after the surface is touched many times -or- even after multiple touches]
- Keeps Killing. Even After Multiple Touches [for up to 24 hours].
- Keeps treated hard, nonporous surface sanitized for 24 hours
- Kills 99.9% of bacteria for 24 hours on treated hard, nonporous surfaces
- Kills 99.9% of bacteria in 5 minutes, and keeps killing for 24 hours.
- [Leaves behind a] shield -or- coating -or- barrier on treated hard, nonporous surfaces for 24 hours
- Multi-purpose -or- Multi-Surface cleaner [with -or- and 24 hour sanitizing]^P
- [Patented -or- Patent Pending] Formula continues to work after multiple touches -or- for up to 24 hours
- Persistent antibacterial sanitizing for up to 24 hours
- Prevents bacterial growth between treated hard, nonporous surfaces for 24 hours
- Protects household surfaces from bacteria for up to 24 hours^P
- Protects treated hard, nonporous surfaces from what you can't see. 24 hours of sanitization [from bacteria growth]³
- Protects treated hard, nonporous surfaces against bacteria between cleanings for up to 24 hours
- Provides 24 hour residual antibacterial control on treated hard, nonporous surfaces
- Provides 24 hour sanitization -or- sanitizing against **insert Residual Sanitization bacteria from Organism Table**
- Provides 24 hour [bacteria -or- antimicrobial] sanitization
- Provides defense against bacteria **insert Residual Sanitization bacteria from Organism Table** for [24 hours]
- Round the clock bacteria protection^{††}
- Sanitize and protect treated hard, nonporous surfaces for 24 hours
- Sanitizes for up to 24 hours
- Sanitization that lasts up to 24 hours
- Sanitization that lasts all day^{††}
- Sanitizes for 24 hours on hard non-porous surfaces against **insert Residual Sanitization bacteria from Organism Table**
- Sanitizes treated [household] surfaces [**insert use surface(s) -and/or- surface materials from Table 1**] [from bacteria] for up to 24 hours
- Scientifically proven to kill bacteria for up to 24 hours
- Stays cleaner between cleans – up to 24 hours
- Surface protection that goes on working for 24 hours^{††}
- [The cleaner that] provides 24 hour [continuous] sanitizing -or- sanitization
- [The cleaner that] provides continuous sanitization for 24 hours
- [This product] keeps killing bacteria even after multiple touches for up to 24 hours
- [This product] [is] a 24[-]hour sanitizer specifically formulated for your home, [(it keeps killing, even after multiple touches)]
- [Useful] when you want cleaning and [24 hour] sanitizing
- Withstands repeated contact for up to 24 hours.

Disinfecting Claims

- 3 in one – cleans, sanitizes & disinfects when used as directed¹
- 3 in one sanitizing and disinfecting when used as directed¹
- [Antibacterial] Multi-Purpose Cleaner
- Antibacterial -and/or- Bactericidal] -and/or- Virucidal[‡]
- Broad spectrum [general] disinfectant
- Cleans -and/or- disinfects [in one step¹]
- Cleans as it disinfects¹
- Cleans, disinfects, and deodorizes
- Destroys bacteria on **insert use surface(s) -and/or- surface materials from Table 1 or use site(s) from Table 2**
- Disinfectant [&] Cleaner
- Disinfecting [Value] Pack
- Disinfects **insert use surface(s) -and/or- surface materials from Table 1 or use site(s) from Table 2**
- Disinfects and deodorizes
- Disinfects and removes offensive odors from **insert use site(s) from Table 2**
- Effective against **insert organism(s) from Disinfection Organism Table**
- Effective against -or- Kills SARS-CoV-2 [the cause of -or- the coronavirus that causes COVID-19]^P
- Eliminates 99.9% of bacteria [in [the] [bathroom]]^P
- Eliminates 99.9% of bacteria from **insert use surface(s) -and/or- surface materials from Table 1 or use site(s) from Table 2**
- Eliminates 99.9% of bacteria -and/or- viruses[‡]
- Eliminates 99.9% of bacteria and viruses[‡] in the presence of 5% blood serum.
- Eliminates 99.9% of [household] viruses[‡] [in 5 minutes]
- Eliminates 99.9% of [household] bacteria⁶
- Eliminates 99.9% of [household] bacteria -and/or viruses[‡]
- Eliminates tough stains and 99.9% of bacteria and viruses[‡]
- Healthcare -or- Hospital disinfectant
- Helps reduce the spread of flu viruses² on treated hard nonporous surfaces
- Helps you maintain a cleaner home
- Kills bacteria and viruses[‡] for the ultimate clean
- Kills 99.9% of viruses[‡] and bacteria⁶; -or- and COVID-19 virus[◇]
- [Cold & Flu viruses⁵] [, and Salmonella⁸]
- Kills [99.9% of] [household] bacteria in 5 minutes
- Kills [99.9% of] bacteria [in one step]
- Kills [99.9% of] bacteria and viruses[‡]
- Kills [99.9% of] bacteria for a deep down clean
- Kills [99.9% of] **Insert 1 or more non-food contact sanitization organisms in Organism Table** [in 60 seconds]
- Kills [99.9%] of **Insert 1 or more non-food contact sanitization organisms in Organism Table** [in 60 seconds]
- Kills bacteria [and] viruses[‡] in -or- on **insert use surface(s) -and/or- surface materials from Table 1 or use site(s) from Table 2**
- Kills Rotavirus -and/or- Pseudomonas aeruginosa -and/or- Staphylococcus aureus -and/or- Salmonella enterica -and/or- 2009-H1N1 Influenza A Virus (Novel H1N1) -and/or- Respiratory syncytial virus [(RSV)] -and/or- Severe Acute Respiratory Syndrome coronavirus [SARS CoV-2] -and/or- Klebsiella aerogenes -and/or- Severe Acute Respiratory Syndrome coronavirus [and] [virus[‡]] [killer] on hard, nonporous surfaces [in 5 minutes]
- Kills **Insert organism(s) from Disinfection Organism Table**
- Kills 99.9% of bacteria and flu viruses²
- Kills [99.9% of] bacteria on -or- in **insert use surface(s) -and/or- surface materials from Table 1 or use site(s) from Table 2**
- Kills 99.9% of cold & flu viruses²
- Kills 99.9% of viruses[‡] and bacteria
- Severe Acute Respiratory Syndrome coronavirus [SARS-CoV-2]
- Kills [bacteria] in 5 minutes: **Insert bacteria from Disinfection Organism Table**
- Kills [viruses[‡]] in 5 minutes: **Insert virus(es) from Disinfection Organism Table**
- Kills odor-causing bacteria
- Kills the virus that causes flu²
- [One-step] Disinfectant
- [Persistent] antibacterial [disinfection] for [up to] 24 hours
- One-step¹ disinfectant [cleaner]
- One-step virucide
- The choice for when you want cleaning and disinfecting
- Virucide[‡]

Emerging Viral Pathogen Claims

This product qualifies for emerging viral pathogen claims per the EPA's 'Guidance to Registrants: Process for Making Claims Against Emerging Viral Pathogens not on EPA-Registered Disinfectant Labels' when used in accordance with the appropriate use directions for use indicated below.

This product meets the criteria to make claims against certain emerging viral pathogens from the following viral category:

- enveloped viruses

<i>For an emerging viral pathogen that is an:</i>	<i>... following the directions for use for the following organisms on the label:</i>
Enveloped virus	Human Rotavirus [ATCC VR-2018] [Strain WA]

This product has demonstrated effectiveness against viruses similar to **insert name of emerging virus** on hard, nonporous surfaces. Therefore, **this product** can be used against **insert name of emerging virus** when used in accordance with the directions for use against †**Rotavirus** on hard, nonporous surfaces. Refer to the CDC -or- OIE website at **insert pathogen-specific website address** for additional information.

Insert name of illness/outbreak is caused by **insert name of emerging virus**. **This product** kills similar viruses and therefore can be used against **insert name of emerging virus** when used in accordance with the directions for use against †**Rotavirus** on hard, nonporous surfaces. Refer to the CDC -or- OIE website at **insert pathogen-specific website address** for additional information.

Organism Table

Disinfection		
Bacteria	Strain and/or ATCC	Contact Time
Pseudomonas aeruginosa	[ATCC 15442]	5 min[utes]
Salmonella enterica	[ATCC 10708]	5 min[utes]
Staphylococcus aureus	[ATCC 6538]	5 min[utes]
Residual Disinfection (General)		
Bacteria	Strain and/or ATCC	
Salmonella enterica	[ATCC 10708]	10 min[utes]
Staphylococcus aureus	[ATCC 6538]	10 min[utes]
Enveloped Viruses		
	Strain and/or ATCC	Contact Time
‡2009-H1N1 Influenza A Virus (Novel H1N1)	[Strain A/Mexico/4108/2009] [CDC #2009712192]	5 min[utes]
‡Human Coronavirus	[ATCC VR-740] [Strain 229-E]	5 min[utes]
‡[Human] Respiratory syncytial virus (RSV)	[ATCC VR-26] [Strain Long]	5 min[utes]
‡Severe Acute Respiratory Syndrome coronavirus [SARS-CoV-2]	[Strain USA-WA1/2020] [(BEI Resources # NR52281)]	5 min[utes]
Large Non-enveloped Virus		
	Strain and/or ATCC	Contact Time
‡Human Rotavirus	[ATCC VR-2018] [Strain WA]	5 min[utes]
Sanitization		
	Strain and/or ATCC	Contact Time
Staphylococcus aureus	[ATCC 6538]	60 sec[onds]
Klebsiella aerogenes	[ATCC 13048]	60 sec[onds]

<i>Residual Sanitization</i>	<i>Strain and/or ATCC</i>	<i>Contact Time</i>
Klebsiella aerogenes	[ATCC 13048]	5 min[utes]
Staphylococcus aureus	[ATCC 6538]	5 min[utes]

General/Miscellaneous Claims

- Bonus **x%** -or- Bonus **x** fl. oz.
- Bonus **X%** More Free: [10% -or- 15% -or- 20% -or- 25% or- 30%] More fl. ounces per bottle¹⁰
- **X%** More Free -or- **X** fl. oz. Free¹⁰
- [An effective] bathroom -or- restroom -or floor cleaner
- Bathroom cleaner -or- foamer
- Bathrooms, sinks and faucets and floor areas
- Buy 1 Get 1 Free
- Cleaning
- Cleans [everyday -and/or- tough] messes
- Cleans [up] grime
- Cleans and degreases
- Cleans bathroom soils
- Cleans fingerprints
- Cleans mold and mildew stains
- Cleans -or- Removes -or- Cuts through [tough] grease -and/or- grime -and/or- soap scum -and/or- limescale [effectively]
- Club Pack
- Compatible with equipment surfaces or **insert use surface(s) -and/or- surface materials from Table 1 -and/or- use site(s) from Table 2**
- Convenient [bathroom] surface cleaner on **insert use surface(s) -and/or- surface materials from Table 1 -and/or- use site(s) from Table 2**
- Cuts -and/or- removes [tough] grime
- Cuts cleaning time
- Cuts through [tough] soap scum -or- [without scrubbing]
- Cuts through -or- wipes out tough grease and grime
- Cuts through common household dirt and grime
- Deep down clean
- Deodorizer -or- Deodorizes
- Designed -or- Ideal for daily [in home] cleaning -or- use
- Destroys odors [at the source]
- Dissolves soap scum
- Dual Pack
- Easy and convenient to use
- Easy to handle
- Ecommerce Pack
- Effective [cleaner -or- cleaning] [formula]
- Effectively cleans on [many -and/or- hard] non-porous surfaces
- Eliminates [tough] Odors [as it cleans]
- Eliminates musty odors
- Extra Pack -or- Size
- [For] general use
- [For] [quick -and/or- easy] assembly -or- set-up
- For multiple cleaning tasks
- For the ultimate clean home
- For use on sealed granite -and/or- glazed tile -and/or- sealed stone -and/or- Formica composite -and/or- sealed/painted wood -and/or- bathroom surfaces
- For use in hospitals
- Hard Surface Cleaner
- Intended for use in schools -and/or- retail facilities -and/or- offices [and other institutional/commercial facilities]
- Keeps surfaces cleaner longer
- Leaves surfaces shiny
- May be used on **insert use surface(s) -and/or- surface materials from Table 1**
- Multi-action cleaning power
- Multi-Pack
- Multi-surface -or- Multi-purpose cleaner
- No mixing, measuring, [or rinsing] required
- No need for gloves
- No need to dilute
- No smeary residue [left behind]
- Non-abrasive formula
- Packaging made with [**x%**] recycled plastic
- [Patented formula is] Powerful on dirt [and can be used on hard, nonporous surfaces around the house.] [Will not harm surfaces when used as directed.]
- Powerful cleaner
- Powerful cleaning formula penetrates -or- eliminates -or- removes tough stains
- Powers through -or- Cleans -or- Removes grime
- Powers through -or- Removes [tough] soap scum
- Provides a clean that lives on
- Provides a true clean [that lives on]
- Provides long lasting freshness
- Quick and Easy Cleaning
- [Quickly] removes dirt and grime
- Quickly deodorizes
- Ready to use [multi-purpose -or- bathroom cleaner]
- Recyclable bottle
- Refill [Value -and/or- Pack]
- Refill Size: fills trigger sprayer 3 times
- Refillable **to be used on container labels with refilling instructions**
- Removes odors
- Removes offensive odors from **insert use surface(s) -and/or- surface materials from Table 1 -and/or- use site(s) from Table 2**
- Safe to use on **insert use surface(s) -and/or- surface materials from Table 1**
- Saves money -and/or- time -and/or- labor [by cleaning and in one step]
- Soap scum blaster
- Soap Scum Remover
- Suitable for everyday use
- Suitable for use on -or- in **insert use surface(s) -and/or- surface materials from Table 1 -and/or- use site(s) from Table 2**
- Tough on grime -or- soap scum
- Triple Pack
- Tub and Tile Cleaner
- Twin Pack -or- Size
- Ultra Value Pack
- Used by -or- in hospitals
- Value System
- Variety Pack
- Will not scratch surfaces

Fragrance/Scent Descriptors

Any fragrance descriptor below can be preceded by bold -or- clean -or- crisp -or- fresh -or- good -or- great -or- invigorating -or- light -or- long-lasting -or- nice -or- pleasant -or- soothing -or- pleasing -or- refreshing -or- relaxing -or- strong -or- warm -or- cool -and/or- followed with aroma -or- bouquet -or- fragrance -or- perfume -or- odor -or- scent -or- smell -or- essence -or- clean

- | | | | |
|--------------------------|-------------------------|--|-------------------------------|
| • Aloe | • Fresh Fragrance | • Mint | • Summer -or- Summer Fresh |
| • Amber -or- Ambery | • Fruity | • Modern | • Tangerine |
| • Atlantic Fresh | • Grapefruit | • Musk | • Tropical |
| • Bergamot | • Green Apple | • Orange Breeze | • Unfragranced -or- Unscented |
| • Bergamot & Orange Peel | • Jasmine | • Orange Peel | • White Musk |
| • Citrus | • Lavender | • Peach | • White Strawberry |
| • Clean | • Lavender & Eucalyptus | • Pineapple | • Wild Berries |
| • Clementine | • Lavender & Mint | • Pleasant | |
| • Cyclamen | • Lemon | • Pure Lemon | |
| • Eucalyptus | • Lemongrass | • Rose -or- Rose Petals -or-
Rose Water | |
| • Eucalyptus & Sage | • Mandarin | • Sage | |
| • Floral | • Mango & Hibiscus | • Springtime | |
| • Floral | • Max Freshness | • Spun Sugar | |
| • Fresh | • Mild | | |

Table 1 Use Surfaces & Surface Materials^B

Acrylic	Glazed tile	PVC	[Stainless] steel
Aluminum	Laminate	Sealed [or finished] hardwood	Tile
Appliances	Laminated plastic	[floors]	Tin
Brass	Laminated surfaces	Sealed Fiberglass	Vinyl
Chrome	Linoleum	Sealed granite	Zinc
Copper	Metal	Sealed Grout	
Crystal Glass	Mirrors	Sealed limestone	
Finished Wood	Nickel	Sealed Marble	
Formica [®]	Painted Surfaces	Sealed Slate	
Galvanized metal	Painted Wood	Sealed Terra Cotta	
Glass	Plastic	Sealed Terrazzo	
Glazed ceramic [tile]	Plastic Laminate	Sealed Wood	
Glazed porcelain [tile]	Plexiglass [®]	Shower Curtains	

Table 2 Use Sites^B

- | | | | |
|--|--|--|--|
| • Acute Care Institution | • Basements -or- crawl spaces | • Campers | • Curing Lights |
| • Airports | • Bathroom[s] [Fixtures] | • Campgrounds | • Cutting Tools |
| • Alternate Care Institutions | • Bathroom Counter[top]s | • Carts | • Day Care Centers |
| • Ambulances [equipment -or-
surfaces] | -and/or- Cabinets -and/or-
Cupboards | • Cars | • Delivery Trucks |
| • Anesthesia rooms | • [Bath]tubs | • Central Service Areas | • Dental Chairs -and/or- offices
-and/or- operatory rooms |
| • Animal Care Facilities | • Bed Knobs -and/or- Frames | • Central Supply Rooms | • Department stores |
| • Animal Equipment Dialysis
Centers -or- machines | -and/or- railings | • Chairs | • Desks |
| • Animal Hospitals | • Bed pans | • Changing Tables | • Desktops |
| • Animal Labs | • Bedrooms | • Clinics | • Diaper pails |
| • Assisted Living Facilities | • Benches | • Coated Mattresses | • Dining rooms |
| • Auto Repair Centers | • Blinds | • Coated Pillows | • Dispensing & Filling
Equipment |
| • Automatic Feeders | • Blood banks | • Combs | • Door -and/or- Cabinet -and/or-
Appliance Handles |
| • Automatic Teller Machines
(ATMs) | • Boats | • Commercial Building | • Dog -and/or- Cat Animal
Kennels |
| • Banks | • Bowling Alleys | • Computer keyboards | • Drain boards |
| • Barber -or- Beauty Shops | • Breeding -and/or- Grooming
Establishments | • Computer Manufacturing Sites | • Dressing Carts |
| • Barges | • Buckets | • Computer peripherals | • Dressing Rooms |
| • Bars -or- Restaurants (non-
food contact surfaces only) | • Buses -and/or- Bus Stations | • Computers -and/or- Tablets
-and/or- Keyboards | |
| | • CAT Scan equipment -or-
rooms | • Counter[top]s | |
| | | • Cruise ship surfaces -or-
equipment | |

- Drinking Fountains (non-food contact surfaces)
- Electronics
- Emergency vehicles
- E[mergency] M[edical] S[ervices] -and/or- Fire Facilities
- Food Processing Plants (non-food contact areas)
- Garages
- Government facilities
- Hair Clippers
- Hair salons
- Health Clubs
- Helicopters
- Homes -or- houses
- Hospital[s] [beds]
- Hotel[s] [Rooms]
- Isolation areas -or- wards
- Kitchen (Non-food contact surfaces)
- Laboratories
- Lamps
- Laundries
- Libraries
- Living rooms
- Locker[s] [rooms]
- Medical offices
- Medical Research Facilities
- Movie Theaters
- Mud rooms
- Neonatal units
- Newborn Nurseries
- Nurse call buttons -or- devices
- Nursery
- Office[s] [Buildings -or- Equipment]
- Patio furniture
- Performance Centers -or- Theaters
- Performance/Theater Centers
- Pet Animal Quarters
- Pet Shops
- Picnic Facilities
- Playpens
- Playrooms
- Portable -and/or- Chemical Toilets
- Post Offices
- Plumbing Fixtures
- Powder rooms
- Pre-schools
- Public spaces
- Recreational sporting -or- snow -and/or- water equipment
- Recycling Bins
- Refrigerator exterior surfaces
- Restroom Fixtures
- Restrooms
- Retail and Wholesale establishments
- RV's -or- Mobile homes
- Salons
- Schools
- Scissors
- Shopping Malls
- Shower curtains -or- doors -or- stalls
- Sinks
- Soap dispensers
- Spas
- Sport complexes
- Sports Arenas
- Storage areas
- Stovetops⁹
- Strollers
- Supermarkets ((non-food contact surfaces))
- Tables
- Tanning Beds -or- equipment -or- salons -or- spas
- Taxis
- Telephones
- Toilet -or- Urinal Exteriors -or- Exterior surfaces of Toilets
- Trains -and/or- Train Stations
- TV Remote Controls
- TV -and/or- phone -and/or- Tablet Screens
- Vanity tops
- Vet Offices -or- Hospitals
- Veterinary Clinics
- [Washable] Walls
- Wheelchairs

Alternate Brand Names (ABNs)

- Clorox® Disinfecting Mist Max
- Clorox® Disinfecting Mist Ultra
- Clorox® Turbo™ Max Disinfecting Cleaner for Sprayer Devices
- Clorox® Turbo™ Ultra Disinfecting Cleaner for Sprayer Devices
- Clorox® Turbo™ Disinfecting Cleaner Max for Sprayer Devices
- Clorox® Turbo™ Disinfecting Cleaner Ultra for Sprayer Devices

Footnotes

- ¹ when used according to [the] disinfectant directions
- ² 2009-H1N1 Influenza A virus (Novel H1N1)
- ³ Even after multiple touches
- ⁴ than non-residual disinfectants
- ⁵ Influenza A H1N1 [2009 H1N1 -and/or- Rotavirus -and/or- Human Coronavirus -and/or- Respiratory syncytial virus -and/or- Severe Acute Respiratory Syndrome coronavirus [on hard non-porous surfaces] [in 5 minutes]
- ⁶ Staphylococcus aureus -and/or- Pseudomonas aeruginosa -and/or- Salmonella enterica [on hard non-porous surfaces] [in 5 minutes].
- ⁸ Salmonella enterica
- ⁹ allow to come to room temperature
- ¹⁰ vs. **XX** fl. oz. size
- ¹¹ when used according to [the] sanitization directions
- ‡ Sanitizes for 24 hours on hard, non-porous non-food contact surfaces against **insert Residual Sanitization bacteria from Organism Table**
- [‡ Viruses]
- ^P [on] hard, nonporous surfaces [of] [identified on this label]
- ✦ Kills SARS-CoV-2 on hard, nonporous surfaces