



**OFFICE OF CHEMICAL SAFETY AND POLLUTION PREVENTION**

WASHINGTON, D.C. 20460

January 10, 2025

**SENT BY EMAIL**

Christina Wilkinson  
cwilkinson@srcconsultants.com  
CLOROX CO., THE

Subject: Labeling Notification per Pesticide Registration Notice (PRN) 98-10 - Adding Graphics to the Label and Fixing Typos  
Product Name: SHOW  
Admin Number: 5813-93  
EPA Receipt Date: 11/22/2024  
Action Case Number: 00637873

Dear Christina Wilkinson:

The U.S. Environmental Protection Agency is in receipt of your application for notification under Pesticide Registration Notice 98-10 for the above referenced product. The EPA has conducted a review of this request for its applicability under PRN 98-10 and finds that the action requested falls within the scope of PRN 98-10.

The labeling submitted with this application has been stamped "Notification" and will be placed in our records.

Should you wish to add/retain a reference to your company's website on your label, then please be aware that the website becomes labeling under the Federal Insecticide, Fungicide, and Rodenticide Act and is subject to review by the EPA. If the website is false or misleading, the product will be considered to be misbranded and sale or distribution of the product is unlawful under FIFRA section 12(a)(1)(E). 40 CFR § 156.10(a)(5) lists examples of statements the EPA may consider false or misleading. In addition, regardless of whether a website is referenced on your product's label, claims made on the website may not substantially differ from those claims approved through the registration process. Therefore, should the EPA find or if it is brought to our attention that a website contains statements or claims substantially differing from statements or claims made in connection with obtaining a FIFRA section 3 registration, the website will be referred to the EPA's Office of Enforcement and Compliance Assurance.

If you have questions, please contact Aline Heffernan via email at [heffernan.aline@epa.gov](mailto:heffernan.aline@epa.gov).

Sincerely,

Aline Heffernan, Senior Regulatory Advisor  
RMB1, AD  
Office of Pesticide Programs

**Label identification**

**NOTIFICATION**

5813-93

Show, EPA Reg. No. 5813-93

The applicant has certified that no changes, other than those reported to the Agency have been made to the labeling. The Agency acknowledges this notification by letter dated:

R0713226.1

10:15 11/21/24

01/10/2025

**Formatting notes** (applicable for all claims)

**Now[!]** -and/or- **New[ly][!]** -and/or- **Improved[!]**<sup>21</sup> may be added anywhere to a claim and will only be used for the first 6 months of product on shelf.

Optional text may be placed anywhere on the label -and/or- container.

**Bold, italicized** text is information for the reader and is not part of the label.

Bracketed information is optional text.

All footnotes are on the last page, unless they are part of EPA's mandated text.

The word "and" may be substituted with "&". Plural words may be used in their singular form or singular words may be used in their plural form unless otherwise specified in 40 CFR.

All directions may be written in numbered form or in paragraph form.

All use sites and/or use surfaces on the label may be listed in conjunction with an image of the use site and/or use surface.

Highlighted text is new. Strike-through text means removed.

# Show

KEEP OUT OF REACH OF CHILDREN

**CAUTION:** EYE IRRITANT.

See back -or- side panel for first aid statements.

Active Ingredient:

Glycolic Acid ..... 11.185%

Other Ingredients: ..... 88.815%

Total: ..... 100.000%

[Net Contents] \_\_\_\_\_

***Each package type and size will bear the actual net contents in pounds and ounces***

Contains no phosphorus

**All items in this box will be listed on the outer carton as well as the inner pouch label.**

**PRECAUTIONARY STATEMENTS: HAZARDS TO HUMANS AND DOMESTIC ANIMALS.**

**CAUTION:** Causes moderate eye irritation. Avoid contact with eyes or clothing. Wash thoroughly with soap and water after handling and before eating and drinking, chewing gum, -and/or- chewing tobacco.

**FIRST AID:**

**IF IN EYES:** Hold eye open and rinse slowly and gently with water for 15-20 minutes. Remove contact lenses, if present, after the first 5 minutes, then continue rinsing. Have the product container or label with you when calling a poison control center or doctor, or going for treatment.

**PHYSICAL AND CHEMICAL HAZARDS:** Do not mix with bleach-containing products or with other bathroom or household cleaners. To do so may release hazardous gases.

**All items in this box will be listed on the outer carton as well as the inner pouch label.**

Questions or comments? Please visit us at [www.toiletwand.com](http://www.toiletwand.com) -or- [www.clorox.com](http://www.clorox.com) or call us toll-free at 1-866-255-4105 -or- 800-228-1860.

[[Visit -or- Check [out] our website at] [www.clorox.com](http://www.clorox.com) [for more information] [on Clorox]]

Mfd. for & © YYYY The Clorox Company, 1221 Broadway, Oakland, CA 94612.  
Clorox [and ToiletWand] is/are a registered trademark of The Clorox Company.

[NOT FOR INDIVIDUAL SALE.]

Patents: [www.thecloroxcompany.com/patents](http://www.thecloroxcompany.com/patents)

Made in [the] U.S.A. [of global components -and/or- ingredients.] [Assembled in Mexico.] -or-

Made in Mexico [of global components -and/or- ingredients.] [Assembled in [the] U.S.A.] -or-

Made in Mexico with [North America -or- North American] components. [Assembled in [the] U.S.A.]

-and/or-

Made in [the] U.S.A. -or- Mexico [of global components -and/or- ingredients.] -or- Produced -or- Manufactured -or- Made in [the] U.S.A. -or- Mexico [and] Repackaged -or- Packed -or- Boxed -or- Packaged -or- Assembled -or- Wrapped -or- Bundled in [the] U.S.A. -or- Mexico [of global components -and/or- ingredients.]

EPA Reg. No. 5813-93, EPA Est. No. 5813-CA-6 (TPP), GA-2 (VG); ~~62401-NJ-1 (JW); 71106-CA-2 (E8);~~ 71681-IL-1 (03), IL-2 (24); 74417-MEX-1 (KU); 87201-NC-1 (TW); **98689-MEX-1**  
Beginning of batch code indicates Est. No.

For more [product -and/or- ingredient] information, visit [www.IngredientsInside.com](http://www.IngredientsInside.com) -or- [www.smartlabel.org](http://www.smartlabel.org).

For a Spanish translation of product directions -or- instructions -or- information, visit [www.clorox.com](http://www.clorox.com).

**Notes about product packages**

**This product will be available in many executions including a “Starter Kit.” In instances where the cleaning pads are enclosed in another package, the following label elements will be included on the exterior package:**

**Front Panel:**

- The product's name
- Keep out of Reach of Children
- Signal Word
- Referral to first aid instructions -or- statement
- Net content statement
- The ingredient statement

**Back -and/or- side -and/or- top -and/or- bottom panel**

- First Aid Statement
- Directions for use or referral to read product label for use directions
- Directions for assembly of tool
- EPA registration number
- EPA Est. number for the final packer
- The company name and address: Mfd. for -or- Mfd. by -or- Dist. by Clorox

## Packaging Notes

### TO ASSEMBLE CADDY:

#### Quick & Easy One-Time Assembly

- Snap base onto caddy body
- [Load] -or- [place] pouch of cleaning heads -or- [Open pouch and [load] -or- [place] cleaning heads] into caddy
- Snap lid onto top of caddy
- Store this product handle in caddy

#### Note about [storage] hang tab -or- caddy -or- hanger -or- hook -or- [wand] holder

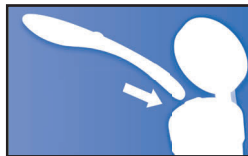
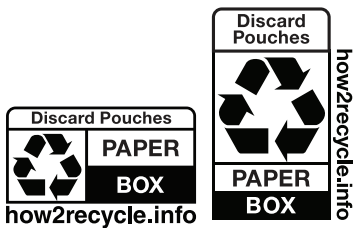
- [The] [molded] [storage] hang tab -or- caddy -or- hanger -or- hook -or- [wand] holder [hang[s] from -or- over [the] toilet tank [edge] [under [the] lid] -or- adheres -or- sticks to the side of the toilet tank [with an adhesive]]
- The [molded] [storage] hang tab -or- caddy -or- hanger -or- hook -or- [wand] holder is used for -or- provides easy storage of [this product[s] -or- the] handle -or- wand

[Slide -or- replace [this product[s] -or- the] handle onto -or- into the [storage] hang tab -or- caddy -or- hanger -or- hook -or- [wand] holder for easy storage.]

To Assemble Wand: Snap [handle] pieces together [until they click into place.] [Assembly is permanent.] [Press -or- click [blue -and/or- gray] button to initialize -or- initiate -or- set up -or- prepare -or- activate wand]

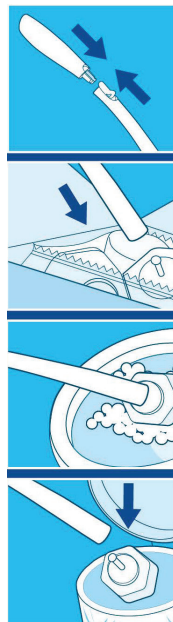
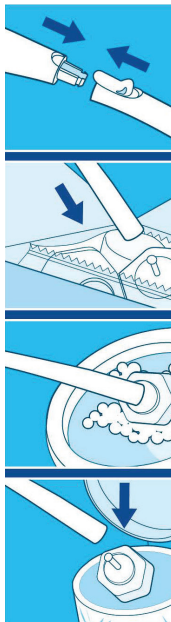
#### Quick & Easy One-Time Assembly

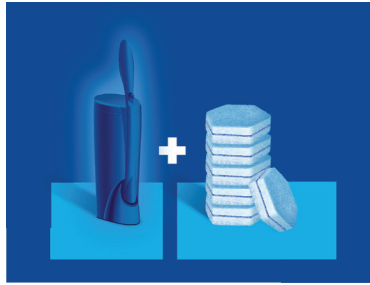
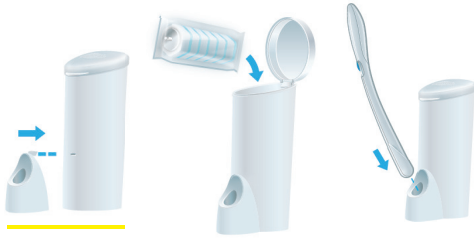
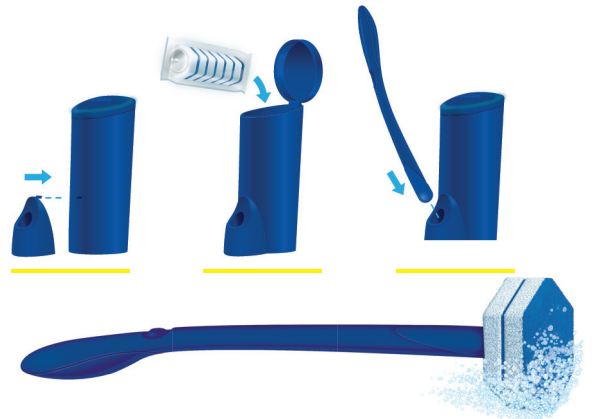
### Optional Packaging Graphics



Prevents odor-causing bacteria growth for  
**48 HOURS**

Prevents odor-causing bacteria growth<sup>a</sup> for  
**48 HOURS**





## DIRECTIONS FOR USE

It is violation of Federal law to use this product in a manner inconsistent with its labeling.

### TO DISINFECT<sup>17</sup> -or- TO KILL GERMS<sup>†</sup> [and DEODORIZE]

1. **[For toilet bowl only.]** Empty bowl before cleaning. -or- Flush before cleaning. Preclean visibly soiled surfaces prior to disinfecting.
  2. Open box -or- pouch -or- caddy of disposable cleaning heads and push handle straight down onto cleaning head unit until it clicks into place.
3. Dip cleaning head in [remaining] toilet bowl -or- sink water for 1-2 sec[onds]. Scrub entire toilet bowl above the water line -or- **for non-toilet uses** Scrub entire hard, nonporous surface.
4. Surface must remain visibly wet [for] 10 min[utes].
5. [When finished,] [to release excess water[,]] [by] pressing -or- press cleaning head against [the] toilet bowl] -or- **for non-toilet uses** sink and slide [blue -and/or- gray] button forward to release head into trash bin.
6. Flush to rinse toilet -or- **for non-toilet uses** Rinse hard, nonporous surface.

**Do not flush cleaning head.** [Slide -or- replace this product['s] handle onto -or- into the [wand] holder -or- hang tab -or- caddy for easy storage.]

### TO SANITIZE<sup>[11]</sup>

1. **[For toilet bowl only.]** Open box -or- pouch -or- caddy of disposable cleaning heads and push handle straight down onto cleaning head unit until it clicks into place.
2. Empty bowl before cleaning. -or- Flush before cleaning.
3. Dip cleaning head in [remaining] toilet bowl water for 1-2 sec[onds]. Scrub entire bowl above water line.
4. Let sit -or- stand [for] 5 min[utes].
5. Flush to rinse toilet.
6. When finished, [to] release excess water [by] pressing -or- press cleaning head against [the] toilet bowl and slide [blue -or- gray] button forward to release head into trash bin.

**Do not flush cleaning head.** [Slide -or- replace this product['s] handle onto -or- into the [wand] holder -or- hang tab -or- caddy for easy storage.]

### TO CLEAN

1. **[For toilet bowl only.]** Open box -or- pouch -or- caddy of disposable cleaning heads and push handle straight down onto cleaning head unit until it clicks into place.
2. Empty -and/or- flush bowl[,]] before cleaning.
3. Dip cleaning head in toilet bowl water for 1-2 sec[onds]. Scrub entire toilet bowl [above water line].
4. When finished, [to] release excess water[,]] [by] pressing -or- press cleaning head against [the] toilet bowl and slide [blue -or- gray] button forward to release head into trash bin.
5. Flush to rinse toilet.

**Do not flush cleaning head.** [Slide -or- replace this product['s] handle onto -or- into the [wand] holder -or- hang tab -or- caddy for easy storage.]

**To prevent -or- inhibit -or- control the growth of odor-causing bacteria for [up to] 48 hours [under the rim -and/or- below the toilet seat [cover] -and/or- around the [toilet] base [of the toilet] -and/or- along the outside of the toilet [seat] -and/or- on surfaces not in contact with [the] [toilet] water]:** [1] Open box -or- pouch -or- caddy of disposable cleaning heads and push handle straight down onto cleaning head until it clicks into place. [2] Flush before cleaning [3] Dip cleaning head in toilet bowl water for 1-2 sec[onds]. Scrub under the rim -and/or- below the toilet seat [cover] -and/or- around the [toilet] base [of the toilet] -and/or- along the outside of the toilet [seat]. [4] When finished, [to] release excess water[,]] [by] pressing -or- press cleaning head against [the] toilet bowl and slide [blue] button forward to release head into trash bin. [5] Allow product to air dry.

## STORAGE AND DISPOSAL:

**STORAGE:** Store product in a cool, dry place and out of the reach of children.

**DISPOSAL:** Dispose of used cleaning pads in a trash bin inaccessible to children and pets. [DO NOT FLUSH.] [Offer empty container -or- carton for recycling. If recycling is not available, discard in trash.]



## Antimicrobial Claims

- 48[-]hour surface protection against -or- from odor causing bacteria<sup>19</sup> growth
- [48 hour] Odor shield [on hard non-porous surfaces] <sup>20</sup>
- A toilet bowl product for cleaning and disinfecting
- An effective cleaner and general disinfectant
- An effective disinfectant for use in the toilet
- Antibacterial action -or- cleaner
- Antibacterial [formula]
- Antibacterial -or- Germicidal<sup>†</sup> Cleaning Power [on hard, nonporous surfaces] [for toilet bowls]
- Bacteria-fighting formula
- Bacteria -or- Germ<sup>†</sup> -or- Virus<sup>‡</sup> fighting [formula]
- Bacteria[l]<sup>[1]</sup> -and/or- viruses<sup>‡</sup> -and/or- germs<sup>†</sup> can cause illness. This product kills bacteria<sup>[1]</sup> -and/or- viruses<sup>‡</sup> -and/or- germs<sup>†</sup>.
- Bacteria<sup>[1]</sup> -and/or- virus<sup>‡</sup> -and/or- germs<sup>†</sup> fighting formula
- Bactericide -or- Bactericidal
- Brush -or- scrub -or- wipe away 99.9% of viruses<sup>7, 8</sup> that cause cold and flu [this season] on hard, nonporous surfaces [in 10 min[utes]]
- Can reduce the spread of illness-causing bacteria<sup>[1]</sup> -and/or- germs<sup>†</sup> [on -and/or- in [your] toilet bowls]
- Cleans and disinfects
- Cleans and disinfects for a pure clean [toilet bowl]
- [Clean[s] -and/or- disinfect[s] -[and/]or- defend[s] [the -and/or- your] toilet [against] [from] 99.9% of bacteria -[and/]or- viruses<sup>‡</sup>
- Cleans [and sanitizes]
- Clean[s] away -and/or- kill[s] -and/or- eliminate[s] -and/or- disinfect[s] -and/or- destroy[s] -and/or- remove[s] -and/or- Brush -or- scrub -or- wipe[s] away -or- out -and/or- attack[s] -and/or- get[s] rid of [99.9% of] [the] bacteria -and/or- germs<sup>†</sup> -and/or- viruses<sup>‡</sup> [commonly found in -or- on [your] toilet bowls]
- Clean[s] away -and/or- kill[s] -and/or- eliminate[s] -and/or- disinfect[s] -and/or- destroy[s] -and/or- remove[s] -and/or- Brush -or- scrub -or- wipe[s] away -or- out -and/or- attack[s] -and/or- get[s] rid of [99.9% of] [the] cold virus<sup>8</sup> -and/or- flu virus<sup>7</sup> -and/or- cold and flu viruses<sup>7, 8</sup> [commonly found in -or- on [your] toilet bowls]
- Clean[s] [away -or- out] -and/or- Kill[s] -or- Eliminate[s] -or- Destroy[s] -or- Remove[s] -or- Gets rid of [the] 99.9% of bacteria -and/or- viruses<sup>‡</sup> [commonly found in -or- on toilet bowls]
- Cleans, disinfects, and sanitizes
- Cleans toilet bowl stains -and/or- soils -and/or- hard water deposits [and] disinfects
- Clean. Disinfect. Protect.
- Cleaner and disinfectant in one
- Cleaning and disinfecting effectiveness of Clorox®, so your toilet [bowl] is free of [soils] you can see and bacteria -and/or- viruses<sup>‡</sup> you can't [see]
- Disinfectancy -or- Disinfectant [cleaner or formula]
- Disinfectant [cleaner]
- Disinfecting -or- Disinfectant [formula]
- Disinfects
- Disinfects and cleans [the] [your] toilet bowl [against *insert organism(s) from Organism Table*<sup>17</sup>]
- Disinfects and cleans [the] [your] toilet bowl [against bacteria<sup>[1]</sup>]
- Disinfects and deodorizes [by killing bacteria and the[ir] odors [they cause]]
- Disinfects [toilet bowl] surfaces
- Disinfectant [cleaner or formula] against Salmonella enterica<sup>[9]</sup> -and/or- Escherichia coli [(E. coli)]
- Disinfects nonporous [hard -and/or- solid] surfaces
- Disinfects [your] toilet bowl [surfaces] including killing [99.9% of] [harmful] germs<sup>†</sup> -and/or- bacteria -and/or- viruses<sup>‡</sup>
- Disinfects [your] toilet bowls killing [99.9% of] [harmful] germs<sup>†</sup> -and/or- bacteria -and/or- viruses<sup>‡</sup>
- [Does not just cover up -and/or- mask odors – ] Eliminates -and/or- removes odors [caused by bacteria<sup>[1]</sup>]
- [Easily -and/or- Effectively] [Contain[s] -or- Deliver[s] -and/or- Clean[s] -and/or- Disinfect[s] -and/or- Effective] toilet bowl disinfectant -and/or- cleaner
- [Effective] Toilet bowl disinfectant -and/or- sanitizer [and cleaner]
- [Effective -and/or- Protect[s]] [against] -and/or- Fight[s] -and/or- Kill[s] viruses<sup>‡</sup>
- Eliminates odors caused by bacteria
- Escherichia coli [(E. coli)] are common [household] bacteria found in the toilet. This product kills these bacteria in the toilet.
- Germ-fighting formula
- Keeps odor causing bacteria<sup>19</sup> from growing -or- from coming back for [up to -or- as long as] 48 hours
- Kills 99.9% of bacteria<sup>[3]</sup>
- Kills [99.9% of] bacteria<sup>[1]</sup> -and/or- viruses<sup>‡</sup> -and/or- germs<sup>†</sup>
- Kills 99.9% of bacteria while it cleans
- Kills [99.9% of] Germs<sup>†</sup> [the First Time [Around] [, Every Time]]
- [Loaded -or- Pre-loaded with], [water-activated] [Clorox®] cleaner [that] kills 99.9% of germs
- Kills 99.9% of germs<sup>†</sup> that cause cold and flu viruses<sup>7, 8</sup>
- Kills 99.9% of [household] [odor-causing] bacteria [and leaves a fresh scent]
- Kills 99.9% of odor causing bacteria and keeps -or- prevents it from coming back for [up to] 48 hours<sup>19</sup>
- Kill 99.9% of organisms<sup>[1]</sup> in the -or- your toilet bowl
- Kills 99.9% of Staphylococcus aureus [(Staph)] -and/or- Klebsiella pneumoniae [(Kleb)]
- Kills [common -and/or- bathroom] bacteria: Salmonella enterica<sup>[9]</sup> -and/or- Escherichia coli [(E. coli)] [in 10 minutes]
- Kills [harmful] [household] bacteria -or- germs<sup>†</sup> -or- viruses<sup>‡</sup> in toilets
- Kills [household] bacteria<sup>1</sup> -and/or- germs<sup>†</sup> -and/or- viruses<sup>‡</sup> [while it cleans] [tough] [toilet bowl] stains -and/or- soils
- Kills [household] [odor-causing] bacteria<sup>[1]</sup> -and/or- viruses<sup>‡</sup> -and/or- germs<sup>†</sup>
- [Kill[s] -or- Fight[s] -or- Remove[s] -or- Effective against] [the following] [organisms] on hard, nonporous surfaces: [E. coli] (Escherichia coli) Human Coronavirus [The virus that causes the] [flu] virus (Influenza A Virus) [The virus that causes the] [cold] virus (Rhinovirus [Type 37]) [Salmonella] (Salmonella enterica<sup>[9]</sup>) [Staph] (Staphylococcus aureus)
- Kill[s] -or- Remove[s] -or- Effective against [Common] Household Viruses<sup>‡</sup>
- Kill[s] -or- Remove[s] -or- Effective against Human Coronavirus
- Kill[s] -or- Remove[s] -or- Effective against Influenza A Virus [the virus that causes the cold and flu]

- Kills [the] [common] cold -and/or- flu viruses<sup>7</sup> -and/or- 8
- Kills the viruses<sup>‡</sup> that cause[s] [the] [common] colds -and/or- flu<sup>7</sup> -and/or- 8
- Kills [toilet bowl] bacteria on [washable] hard, nonporous surfaces
- Kills [toilet bowl] bacteria
- Leaves surfaces sanitary
- Leaves surfaces sanitized
- Protects surfaces against -or- Prevents -or- Inhibits -or- Stops -or- Reduces odor-causing bacteria<sup>19</sup> growth -or- the growth of odor-causing bacteria<sup>19</sup> for [up to] 48 hours
- Prevents the build-up of odor causing bacteria<sup>19</sup> [under the rim] for [up to] 48 hours
- Sanitizes Staphylococcus aureus [(Staph)] -and/or- Klebsiella pneumoniae [(Kleb)]
- Sanitizes surfaces
- Stops -or- prevents -or- inhibits -or- Reduces odor-causing bacteria<sup>[1]</sup><sup>19</sup> [re-]growth for [up to] 48 hours
- [The] Cleaning and disinfecting effectiveness [of Clorox®], so your toilet bowl is free of stains -and/or- soils -and/or- hard water deposits [you can see] and bacteria<sup>[1]</sup> -and/or- viruses<sup>‡</sup> -and/or- germs<sup>†</sup> [you can't]
- The power of Clorox® to clean -and/or- disinfect [tough] toilet bowl grime -and/or- soils -and/or- stains
- [This product] Attacks -and/or- Kills -and/or- Eliminates -and/or- Destroys -and/or- Removes [toilet bowl] [bacteria<sup>1</sup>] such as Escherichia coli [(E. coli)]
- [This product] Attacks -and/or- Kills -and/or- Eliminates -and/or- Destroys -and/or- Removes bacteria [Escherichia coli [(E. coli)] -and/or- Salmonella enterica<sup>[9]</sup>] on hard, nonporous surfaces
- [This product] has the cleaning power -and/or- effectiveness of Clorox® to clean and disinfect
- [This product] has the power of Clorox® to clean tough toilet bowl stains -and/or- soils -and/or- hard water deposits and kill toilet bowl bacteria<sup>[1]</sup> -and/or- viruses<sup>‡</sup> -and/or- germs<sup>†</sup>
- This product is a sanitizer
- Toilet bowl [cleaner -and/or- sanitizer]
- Toilet bowl disinfectant -and/or- cleaner

### Emerging Viral Pathogen Claims

This product qualifies for emerging viral pathogen claims per the EPA's "Guidance to Registrants: Process for Making Claims Against Emerging Viral Pathogens not on EPA-Registered Disinfectant Labels when used in accordance with the appropriate use directions for use indicated below".

**Product name** -or- this product meets the criteria to make claims against emerging pathogen claims from the following viral categories:

- Enveloped viruses
- Large non-enveloped viruses

<i>For an emerging viral pathogen that is a/an..</i>	<i>..follow the directions for use for the following organisms on the label:</i>
Enveloped virus	Rhinovirus Type 37
Large, non-enveloped virus	Rhinovirus Type 37

**Product Name** -or- this product has demonstrated effectiveness against viruses similar to **insert name of emerging virus** on hard, nonporous surfaces. Therefore, **product name** -or- this product can be used against **insert name of emerging virus** when used in accordance with the directions for use against Rhinovirus Type 37 on hard, nonporous surfaces. Refer to the CDC -or- OIE website at insert pathogen-specific website address for additional information.

**Insert name of illness/outbreak** is caused by **insert name of emerging virus**. **Product name** -or- this product kills similar viruses and therefore can be used against **insert name of emerging virus** when used in accordance with the directions for use against Rhinovirus Type 37 on hard, nonporous surfaces. Refer to the CDC -or- OIE website at **insert pathogen-specific website address** for additional information.



**Organism Table**

<b>Disinfection</b>	
<b>Bacteria</b>	<b>ATCC and/or Strain</b>
Staphylococcus aureus [(Staph)]	[ATCC 6538]
Salmonella enterica <sup>[9]</sup> [(Salmonella)]	[ATCC 10708]
Escherichia coli [(E.coli)]	[ATCC 11229]
<b>Viruses Enveloped</b>	<b>ATCC and/or Strain</b>
‡Human Coronavirus	[ATCC VR-740] [Strain 229-E]
‡Influenza A Virus	[ATCC VR-544] [Strain Hong Kong]
<b>Virus Small Non-Enveloped</b>	<b>ATCC and/or Strain</b>
‡Rhinovirus [Type 37]	[ATCC VR-1147] [Strain 151-1]
<b>Sanitization</b>	
<b>Bacteria</b>	<b>ATCC and/or Strain</b>
Klebsiella pneumoniae [(Kleb)]	[ATCC 4352]
Staphylococcus aureus [(Staph)]	[ATCC 6538]

## General/Miscellaneous Claims

- \_\_\_\_% [More Refills] free
- [**X number**] Disposable Cleaning Heads
- [**X number**] Refills
- [1 Box -or- Package of] **insert number** [Clorox] [ToiletWand] Refills = **insert number** Bottles [of] **insert number** [fl] oz [Toilet] [Cleaner]<sup>16, [4]</sup>
- [1 -or- One] [Clorox] ToiletWand® Replaces [Toilet] Brush + [Toilet] Cleaner<sup>16, [6]</sup>
- 1 [storage] hanger -or- hook -or- [wand] holder
- 2 -or- 3 [-]in[-]1 Scrubbers +/-and/or- Cleaners -or- Fresheners
- [3 in 1] Cleans[,] [&] [Deodorizes][,] [&] [Freshens]
- 360 Degree -or- ° [Swivel] [Head -and/or- Pad -and/or- Wand] [Technology] [Now] [clean[s] every contour -and/or- curve]
- 360-Degree -or- ° Swivel-Head Action Dissolves Stains Quicker<sup>21</sup>
- 360-Degree -or- ° Swivel-Head [Wand]
- 360 Degree -or- ° Swivel -or- Pivot [Head] Technology
- 360 Degree -or- ° Swivel [head] to clean hard to reach places
- 4x [Powerful] Cleaning Action<sup>18</sup>
- 4[-]in[-]1<sup>18</sup>
- [10 ct] [Refills] Fits [perfectly] in the ToiletWand® Caddy!
- 65% More<sup>5</sup>
- A Better Way to Clean -or- [For] a better clean
- All-in-one system for easy toilet bowl cleaning
- Angled to clean hard to reach places[!]
- Cleans -and/or- Scrubs [**insert number**% -and/or- X] Better<sup>[14 -or- 10]</sup> [Than A Brush] [on Rust -and/or- Calcium -and/or- Lime -and/or- Hard Water -and/or- Toilet Ring -and/or- Stains]
- [Back to] College Must Have[!] -or- Essential
- Better cleaning within [easy] reach
- Bleach free
- Bonus! [Free Refills -or- \_\_\_\_ Free Refills -or- \_\_\_\_ Refills Free] [50% More Refills Free -or- Inside]
- [Bonus -or- Extra] Handle -or- Wand [Inside]
- Bonus [Pack]! \_\_\_\_% extra pads free -or- inside
- Bonus [Pack]! \_\_\_\_ Extra pads inside! -or- \_\_\_\_ More -or- Free Refills -or-Pads!
- Bonus! [Pack] [ \_\_\_\_ Refills Free]!
- Bonus [Pack]! 50 % extra pads free
- Bonus [Pack]! 50% More Refills Free -or- Inside
- Bonus [Pack]! Free Sample -or- Bonus! Get \_\_\_\_ Pads Free
- Bonus [Pack]! \_\_\_\_ More Refills -or- \_\_\_\_ Free Refills!
- Bonus [Pack]! Get \_\_\_\_ Pads Free -or- \_\_\_\_ Extra Pads [inside]!
- Bonus! Products **insert product name(s)** inside!
- [Bonus] [storage] caddy -or- hanger -or- hook -or- [wand] holder inside!
- Bonus[!] [storage] hanger -or- hook -or- [wand] holder
- Bonus! This product inside!
- Bonus! Extra Handle Inside!
- Bonus [pack]
- Brighten[s] [your] toilet bowls
- Caddy provides convenient -and/or- sanitary storage
- Clean with the wave of a wand
- Cleaning power -and/or- effectiveness of Clorox®, so your toilet [bowl] is free of [soils] you can see
- Cleans and deodorizes [toilet bowls]
- Cleans -and/or- deodorizes all washable -and/or- hard, nonporous surfaces
- Cleans -and/or- shines toilet bowls without [leaving] a [filmy] [sticky] residue
- Clean every contour -and/or- curve[!]
- Clean every inch of your bowl for a more complete clean
- [Cleans] **insert number up to 400%** -or- **4 X Better** [on rust -and/or- hard water -and/or- mold stains -and/or- mildew stains]<sup>15</sup>
- Cleans the -or- your toilet bowl fast [with the wave of a wand]
- Cleans [tough -and/or- toilet bowl] stains -and/or- soils -and/or- hard water deposits -and/or- mineral deposits -and/or- rust stains [fast] [with the wave of a wand]
- Cleans without bleach[ing]
- Click -and/or- Ditch -and/or- toss [away] the [toilet] [brush] ick [each -and/or- every time] [every time]
- Click[, Swish] [Scrub] [and] [Clean] [and], Toss
- Clorox® Scentiva[® -or- ™] [Bathroom]
- Club [Bonus] Pack! \_\_\_\_ free Refills -or- Pads
- Club [Bonus] Pack! [Includes] \_\_\_\_ more Refills -or- pads
- Comfortable -and/or- Complete -and/or- All in One<sup>23</sup> [Monthly] Clean[!]
- Contains no bleach
- Contains [powerful] [, foaming] Clorox® cleaner
- Contains [product] [storage] hanger -or- hook -or- [wand] holder [for easy storage]
- Convenient and easy to use
- [Convenient] Wand & refill caddy
- Crisp Citrus[™ -or- ®] [Scent -or- Fragrance]
- Cuts through [tough -and/or- toilet bowl] stains -and/or- soils -and/or- hard water deposits -and/or- mineral deposits -and/or- rust stains [fast] [with the wave of a wand]
- Cuts through [tough] soils -and/or- stains -and/or- hard water deposits -and/or- rust stains
- Delivers a more effective -and/or- complete clean<sup>21</sup>
- Delivers a full 360 degree clean[!]
- Delivers maximum coverage
- Deodorizes
- Deodorizes [washable] hard, nonporous surfaces
- Deodorizes [with] [and has] [a] [clean] [fresh] [scent]
- Designed for Optimal Reach
- Designed -or- engineered -or- built to clean hard-to-reach places[,] [like under the rim]
- Designed to clean, because [, clearly,] you [we] weren't
- Designed to clean [hard-to-reach places], [like] [under the rim]
- Designed to reach [hard-to-reach spaces], [like] [under the rim]
- Designed [to fit] -or- [for] the ToiletWand® Caddy!
- Designed with you in mind[!]
- Disposable
- Disposable -and/or- [scrubby] pad -or- head loaded with Clorox® cleaner
- [Disposable -or- scrubbing] pads give you a clean -and/or- fresh start every time
- Disposable toilet cleaning system [that gets rid of your toilet brush]
- Dissolves -and/or- penetrates -and/or- breaks down [the toughest] toilet bowl soils -and/or- stains

- Double -or- Triple -or- **insert number up to 400%** -or- **4 X** [More] [Powerful] Scrubbing [Power] [Under the Rim] [in Hard-to-Reach Spaces -or- Areas]<sup>15</sup>
- Each [scrubbing] pad is pre-loaded -or- loaded with disinfecting -and/or- water-activated [Clorox®] cleaner
- Easier -and/or- quicker [to] clean [with less effort -and/or- hard to reach areas]<sup>21</sup>
- Easily cleans the toughest soils -and/or- stains -and/or- hard water deposits
- Easily cleans tough toilet bowl soils -and/or- stains -and/or- hard water deposits [and leaves surfaces shiny]
- Easily removes tough toilet bowl soils -and/or- stains -and/or- hard water deposits
- Easy and convenient
- Easy -and/or- simple to use
- Easy Clean
- Easy Storage!
- Easy-to-use wand
- Economy size
- Eliminate -or- Get rid of -or- Throw away -or- Say Goodbye to [your] [drippy -and/or- dirty] toilet brush!
- Engineered -or- Designed [for a cleaner -or- better -or- faster way] to clean<sup>14</sup>
- Extends your reach for those hard-to-clean areas
- Extra -or- Bonus Handle -or- Wand Inside[!]
- Fast [Strong] cleaning power
- [Flexible] Scrubber Conforms -or- Flexes [to Hard-to-Reach Spaces -or- Areas] [for Complete [Bowl] Coverage]<sup>5</sup>
- Flexible Scrubber for Complete [Bowl] Coverage
- Foaming cleaner in each [disposable] head
- For a cleaner toilet bowl
- For the Disposable Toilet Cleaning System -or- **insert ABN**
- For the purest clean in toilet [bowl] cleaning
- [For] use with the -or- these Clorox® ToiletWand® [family of] products. [Find them in the cleaning aisle -or- where[ever] you buy cleaning supplies]
- Free hanger -or- hook -or- [wand] holder included[!]
- Free [product] [-and/or- storage] hanger -or- hook -or- [wand] holder
- Free sample or refill!
- Fresh scent -or- fragrance
- Fresh Brazilian Blossoms [scent -or- fragrance]
- Freshens the -or- your toilet bowl
- Get \_\_\_\_ pads free
- Get it clean [and] [then] toss the ick
- Gets into hard-to-reach areas [like under the rim]
- Great for college [-and/or- [the -or- your] home]
- Has better [scrubbing] surface [contact] than a brush<sup>14</sup> -or- Cleans -and/or- works -and/or- removes soils [30%] better than a [Clorox®] [toilet] brush<sup>14</sup> -or- Cleans -and/or- removes [30%] more [soil] [than a [Clorox®] [toilet] brush]<sup>14</sup> -or- Cleans -or- Scrubs -and/or- gets under the rim [better than a [Clorox®] [toilet] brush]<sup>14</sup> -or- Covers more [surface] area [of the bowl] [than a [Clorox®] [toilet] brush]<sup>14</sup> -or- Gets into -or- goes to -or- conforms to -and/or- cleans hard to reach places better [than a [Clorox®] [toilet] brush]<sup>14</sup> -or- [Great] [Get it] clean [with] [in] less scrubbing<sup>14</sup>
- Hawaiian Sunshine [scent -or- fragrance]
- Head specially designed in a hexagon shape for better reach under the rim<sup>2</sup>
- Heavy Duty [Cleaner -and/or- Scrubber]
- Helps keep the -or- your toilet bowl clean, clear, and free of odor
- Hexagon shape for better reach under the rim
- Improved pad release [button] [for a quicker release]<sup>21</sup>
- Includes [2] scents[: ] [Plus] Rainforest Rush and Original [pads]
- [Includes] [1] [Free] hanger -or- hook -or- [wand] holder[!]
- Includes 1 [product] [storage] hanger -or- hook -or- [wand] holder
- Includes 1 [storage] hanger -or- hook -or- [wand] holder
- [Includes [a] -and/or- Bonus -and/or- Added Value -and/or- Extra] [Free] Wand [Holder] -and/or- [**X**] pads -and/or- **insert ABN** [Included] **insert number up to 50**
- [Includes -and/or- Bonus] Wand [Holder] [Included]
- Includes -or- Contains 1 Wand + -and/or- 1 Caddy + -and/or- 6 -or- 9 Refills
- [**insert number up to 400%** -or- **4 X**] [More] [Ultra Strength] Cleaning -or- Scrubbing [Power] -or- Powerful Cleaning [in One [Easy] Step] -or- with Every -or- Each Swish -or- Wipe -or- Wave -or- Use -or- [Scrubbing] Pad<sup>14</sup>
- [**insert number up to 400%** -or- **4 X**] Tougher -or- More -or- Maximum Power[ful] Against [the] [Tough[est]] Rust -and/or- Calcium -and/or- Lime -and/or- Hard Water -and/or- Stains -and/or- Toilet Ring<sup>14</sup>
- [**insert number up to 400%** -or- **4 X**] [Faster -or- Better] Rust, Calcium [, -and/or- ] Lime [Stain] -or- Rust & Hard Water [Stain] -or- Stain -or- Toilet Ring -or- Soil -or- Dirt & Grime -or- Mold Stain & Mildew Stain Destroying -or- Dissolving -or- Cleaning Power<sup>15</sup>
- **insert number up to 400%** -or- **4 X** [Thick[er]]<sup>10</sup> -or- Textured] [for] [More] [Cleaning -and/or- Scrubbing] Power]
- **insert number between 2 and 16X** [Power[ful]] Cleaning Action<sup>18</sup>
- Institutional size
- **insert number** count -or- pack
- [**insert number**] [Disposable] [Clorox®] [Scrubbing] Pads
- [**insert number**-in-1] [Starter Kit] [Includes][: ] [**insert number**] [[Toilet]wands -or- Handles [+ ] [**insert number**] [Storage] Caddy -or- Container [+ ] [**insert number**] [Disposable -and/or- Scrubbing] Pads [Which come] [pre-]loaded with [water-activated -and/or- powerful] [Clorox®] cleaner]
- Island Blossom<sup>TM</sup> [Scent -or- Fragrance]
- It's from Clorox®, so it's more than clean]
- It's from Clorox®, so you know you can trust it]
- Just a Simple turn of the wrist[!]
- [Just] Click, Swish [Scrub] & Toss
- Keep -and/or- store your **this product** within reach
- Leaves a fresh, clean scent
- Leaves no residue -and/or- surfaces shiny
- Leaves toilet bowl [surfaces] [clean and] sanitary
- Less messy
- Loaded with Clorox® cleaner
- Loaded with more cleaner<sup>12</sup>
- Look for [other] Clorox® ToiletWand® refills -or- products [in the cleaning aisle!] -or- [where[ever] you buy cleaning supplies]
- Made at a Zero Waste [to Landfill] Facility<sup>22</sup>
- Makes cleaning easier
- Makes surfaces sparkle -and/or- sparkling clean
- More effectively cleans under the rim[!]<sup>21</sup>
- New -and/or- improved [formula]<sup>21</sup>
- Neutralizes odors
- No more bending and stretching
- No streaking or filming

- Non-abrasive
- Not harmful for most surfaces
- [Not] [reverse] compatible -or- use -or- only works with [previous] **insert ABN** -and/or- Simply Clean -and/or- Rainforest Rush -and/or- ToiletWand 360 [Refills -and/or- Wand]
- Nothing works faster on soils -and/or- stains -and/or- hard water deposits -and/or- rust stains
- Nothing's tougher on tough soils -and/or- stains -and/or- hard water deposits -and/or- rust stains
- [Now with a] 360 Degree -or- (degree symbol) Swivel [head] to clean hard to reach places
- One tool cleans it all
- Original scent -or- fragrance[!]
- Pacific Breeze & Coconut [scent -or- fragrance]
- [Pads -and/or- Wand [Holder] -and/or- Caddy] [Now] Made with [[up to] **X%** -or- **1/X**] recycled -and/or- post consumer -and/or- less plastic<sup>[21]</sup> **Insert number up to 100. Footnote '21' will be used if "less plastic" is in claim**
- Patent pending
- [[Penetrates &] Removes -or- Destroys -or- Dissolves -or- Powers Through -or- Scrubs Away -or- Lifts Away -or- Cleans [Rust][, -and/or-] [Calcium][, -and/or-] [Lime][, -and/or-] [Hard Water][, -and/or-] [the] [Tough][est] Stains -and/or- Toilet Ring -and/or- Soils -and/or- Dirt & Grime -and/or- Mold Stains & Mildew Stains] **insert number up to 400%** -or- **4 X** Faster<sup>15</sup>
- [Pre-]Loaded with Clorox® cleaner
- Porcelain-safe
- Powerful cleaner in each [disposable] head
- Powerful [scrubbing] pads destroy [tough] stains
- Powers through soils -and/or- stains -and/or- hard water deposits -and/or- rust stains
- Powers through [tough] [everyday] [toilet] stains -and/or- soils -and/or- grime
- Prevents hard water -and/or- toilet ring [build up]
- [Product] [storage] Hanger -or- Hook -or- [Wand] Holder
- [Protect[s]] [with] the trusted power of [Clorox®]
- Rainforest Rush™ [Scent -or- Fragrance]
- Reach[es] for a clean [, so you don't have to]
- Ready to Use
- [Ready to use] for a faster clean [no spraying or waiting]
- [Real] scrubbing power [that gets the job done]
- [Real] scrubbing power, [for a] [real] clean toilet
- Re-engineered -or- improved swivel-head [design]<sup>21</sup>
- Re-engineered to glide effortlessly<sup>[21]</sup> [!]
- Removes -and/or- Dissolves -and/or- Cuts -or- Powers Through -and/or- Eliminates **insert number up to 400%** -or- **4 X** [More] [of] [the][Tough[est]] Rust -and/or- Calcium -and/or- Lime -and/or- Hard Water -and/or- Stains -and/or- Toilet Ring<sup>14</sup>
- Removes everyday toilet stains -and/or- soils
- Removes odors
- Removes -or- Powers Through -or- Tough on [the] [Tough][est] [Rust, Calcium, &] Lime [Hard Water] Stains -but/and- Scratch Free [ & Safe] on [Your] Porcelain Toilet Bowls
- Removes [the] [Tough][est] [Rust, Calcium, &] Lime [Stains] -or- Hard Water Stains
- Removes [tough -and/or- toilet bowl] stains -and/or- soils -and/or- hard water deposits -and/or- mineral deposits -and/or- rust stains [fast] [with the wave of a wand]
- Removes tough [soils -and/or- stains -and/or- hard water deposits -and/or- rust stains] [in your toilet bowl]
- Safe for plumbing and septic systems
- Satisfaction guaranteed [or Your Money Back]
- Saves time
- Scrub -or- swish less, clean more<sup>11</sup>
- Scrubs Spots Your [Toilet] Brush Misses<sup>[5]</sup>
- [Scrubs Under the Rim] -or- [Scrubs Spots Your [Toilet] Brush Misses] -or- [Reaches Tight Spaces [with Flexible Scrubber]] [for Complete Coverage]
- Scrubbier Heads for a Better Clean!<sup>12</sup>
- Scrubbier<sup>2</sup> heads for a better clean
- Scrubbier Material<sup>12</sup>
- Scrubby Heads Designed for a Great Clean!
- Smells as Good as it Cleans
- Soils -and/or- stains -and/or- hard water deposits -and/or- rust stains melt away
- Start Fresh Every Time
- Starter kit
- Strong [cleaner]
- Store [your] this product not -or- without -or- the germie head!
- [Store your -or- this product.] Toss the [germie] [dirty] head!
- [Super] Value [Pack]!
- Swivel [cleaning] head conforms to [hard-to-reach] areas -or- toilet bowl surfaces -and/or- [like] under the rim
- [Swivel head] conforms to hard-to-reach areas [like under the rim]
- Takes up less space<sup>21</sup>
- [Textured] -or- [Deep Cleaning] Micro-Scrubbers Power Through -or- Penetrate -or- Destroy -or- Dissolve -or- Lift Away -or- Scour Away [the] [Tough][est] Stains
- [The] All-in-one -or- Complete [toilet] [cleaning] system -or- kit
- [The] Cleaning power [of Clorox®], so your toilet bowl is free of stains -and/or- soils -and/or- hard water deposits [you can see]
- The cleaner -or- better -or- faster way to clean your toilet<sup>14</sup>
- The evolution of clean
- The no-mess toilet bowl cleaner
- [The] One Step [Toilet Bowl] Cleaner
- [The] total [Complete] Toilet Cleaning Solution
- The toilet bowl solution -or- cleaner
- [Thick[er]]<sup>[10]</sup> -and/or- Scrubby -and/or- Scrubbier<sup>[10]</sup> -and/or- Textured Pads [Clean[s] -or- Scrub[s]] **insert number up to 400%** -or- **4 X** Better<sup>[14]</sup> [Than a Brush] [for Better -or- Easy -or- Powerful Cleaning]
- This product caddy - Start fresh every time!
- This product [Complete] – Start fresh every time!
- [Thousands of -or- Millions of] [Loaded with] [Extra -and/or- Tough] Microscrubbers -or- Microabrasives -or- Scrubbing Pads [[to] Penetrate[s] -and/or- Dissolve[s] -and/or- Attack[s] -and/or- Power[s] Through -and/or- Clean[s] -and/or- Remove[s]] **insert number up to 400%** -or- **4 X** [of] [More] [of] [the] [Tough[est]] Rust -and/or- Calcium -and/or- Lime -and/or- Hard Water -and/or- Stains -or- Messes]<sup>14</sup>
- Clorox® ToiletWand® Handle Sold Separately
- Toss -or- throw away the ick -or- mess [every time]
- Tough on [toilet bowl -and/or- tough] stains -and/or- soils -and/or- hard water deposits -and/or- mineral deposits -and/or- rust stains [fast] [with the wave of a wand]
- Tough on soils -and/or- stains -and/or- hard water deposits -and/or- rust stains

- Trial size
- Tough[er]<sup>[10]</sup> -and/or- Thick[er]<sup>[10]</sup> -and/or- Strong[er]<sup>[10]</sup> -and/or- [More] Durable<sup>[10]</sup> -and/or- Textured -and/or- Scrubby -and/or- Scrubbier<sup>[10]</sup> [For Tough[er] -and/or-Stubborn -and/or- Messes -and/or- Soils -and/or- Rust -and/or- Calcium -and/or- Lime -and/or- Stains][!]
- Tuscan Lavender & Jasmine [scent -or- fragrance]
- Twists and turns [so you don't have to][!]
- Use [this product] on the following [washable] hard, nonporous surfaces<sup>[13]</sup>: **insert surface(s)** -and/or- **surface material(s)** from **Table 1**
- Use -and/or- compatible with **insert ABN** -and/or- Simply Clean Refills
- Value size -and/or- pack
- Variety -or- Combo -or- Multi[-] -or- Mixed -or- Scented -or- Scentiva Pack -or- Box
- VALUE!
- [Wand holder] Designed to fit in small -or- tight spaces -or- your bathroom
- [Wand Holder] Sleek -and/or- Durable [Modern] Design
- Wipes out stains -and/or- soils -and/or- rust stains in the toilet bowl
- [With] disposable scrubbing pads
- With Micro-Scrubbers
- Won't scratch toilet bowl
- Wow! No more dirty brush!
- www.Clorox.com
- [You can] see it clean -and/or- remove [toilet bowl] stains -and/or- soils -and/or- hard water deposits -and/or- rust stains [before your eyes]
- [You can] see stains -and/or- soils -and/or- hard water deposits -and/or- rust stains melt

**Table 1 Surfaces/Surface Materials**

- Bathroom -or- restroom surfaces
- Chrome
- Enamel
- Glazed ceramic [tiles]
- Metal surfaces in bathrooms -or- restrooms
- Porcelain
- Sinks
- Synthetic marble
- Toilet exteriors
- Urinal exteriors

Do not use on natural stone, brass or varnished wood; [for all other surfaces,] spot test [all other surfaces] in an inconspicuous area. **Must use one of the bracketed phrases in the preceding sentence.**

Not for use on cookware.

#### **Alternate Brand Names**

- |  |  |
|--|--|
| Clorox® ToiletWand® 360 Refills        | Clorox® ToiletWand® Complete Starter Kit |
| Clorox® ToiletWand® 360 Starter Kit    | Clorox® ToiletWand® Complete Refills     |
| Clorox® ToiletWand® Swivel Starter Kit | Clorox® ToiletWand® Plus Starter Kit     |
| Clorox® ToiletWand® Swivel Refills     | Clorox® ToiletWand® Plus Refills         |
| Clorox® ToiletWand® Pivot Starter Kit  | Clorox® ToiletWand® Advanced Starter Kit |
| Clorox® ToiletWand® Pivot Refills      | Clorox® ToiletWand® Advanced Refills     |



## Footnotes

<sup>1</sup> Escherichia coli, Salmonella enterica<sup>[9]</sup> and Staphylococcus aureus

<sup>2</sup> Compared to [the] original Clorox® ToiletWand® head

<sup>3</sup> Staphylococcus aureus and Klebsiella pneumoniae

<sup>4</sup> see graphic below

<sup>5</sup> see graphic below

<sup>6</sup> see graphic below

<sup>7</sup> Influenza A Virus

<sup>8</sup> Human Coronavirus and Rhinovirus [Type 37]

<sup>9</sup> **tested as Salmonella choleraesuis**

<sup>10</sup> vs. [Clorox®] [Disinfecting] ToiletWand Refills

<sup>11</sup> Kills 99.9% of bacteria; Organisms: Staphylococcus aureus, Klebsiella pneumoniae

<sup>12</sup> Compared to [the] original Clorox® ToiletWand® head

<sup>[13]</sup> Not for use on floors. [Do not use on floors.] [Do not use to clean floors.] May cause slipperiness.

<sup>14</sup> v[ersu]s[.] [a] [Toilet] Brush & Water -or- v[ersu]s[.] [a] [Toilet] Brush & [Clorox®] manual toilet bowl cleaner

<sup>15</sup> v[ersu]s[.] -or- than a -or- [Your] [Toilet] Brush [Alone] [+][Liquid] [Cleaner]

<sup>16</sup> Clorox® Toilet Bowl Cleaner - with Bleach -and/or- Clorox® Toilet Bowl Cleaner-Tough Stain Remover -and/or- Clorox® Toilet Bowl Cleaner-Clinging Bleach Gel -and/or- **insert ABN(s)**

<sup>17</sup> [Disinfects -and/or- Kills bacteria<sup>1</sup>, viruses<sup>‡</sup> or germs<sup>†</sup>]

<sup>18</sup> **insert any 4 -or- up to 16 of the following claims**

- Brighten[s] [your] [toilet bowls]
- Deodorizes [with -and/or- and has] [a clean] [fresh] [scent]
- Disinfects
- Flexes [to Hard-to-Reach Spaces -or- Areas] [for Complete [Bowl] Coverage]
- Freshen[s] [the -or- your] [toilet bowls]
- Kills 99.9% of Germs<sup>†</sup>
- Neutralizes -and/or- Removes odors
- Prevents hard water -and/or- toilet ring [build up]
- Removes -and/or- Dissolves -and/or- Cuts -and/or- Powers Through -and/or- Eliminates [**Insert number%** -and/or- **X**]

[More] [of] [<sup>‡12</sup> -or- <sup>10</sup>] [the] [Tough][est] Rust -and/or- Calcium -and/or- Lime] -and/or- Hard Water -and/or- Stains -and/or- Toilet Ring

■ Removes Stains

■ [Scrubs [Under the Rim]] -or- [Scrubs Spots Your [Toilet] Brush Misses] -or- [Reaches Tight Spaces [with Flexible Scrubber] [for Complete [Bowl] Coverage]]

■ Textured -and/or- Scrubby -and/or- Scrubbier[<sup>‡12</sup>] [For Tough[er] -and/or-Stubborn -and/or- Messes -and/or- Soils -and/or- Rust -and/or- Calcium -and/or- Lime -and/or- Stains]

■ Textured [for [More] [Cleaning -and/or- Scrubbing] Power]

<sup>19</sup>Under the rim -and/or- below the toilet seat [cover] -and/or- around the [toilet] base [of the toilet] -and/or- along the outside of the toilet [seat] -and/or- on surfaces not in contact with [the] [toilet] water. Allow product to air dry.

<sup>20</sup>Prevents odor causing bacteria from growing under the rim -and/or- below the toilet seat [cover] -and/or-around the [toilet] base [of the toilet] -and/or- along the outside of the toilet [seat] -and/or- on surfaces not in contact with [the] [toilet] water for up to X hours **X is less than or equal to 48 hours**. Allow product to air dry.

<sup>21</sup>versus -or- vs. [previous] **insert ABN** -or- a toilet brush [and Clorox(r) [manual] toilet bowl cleaner [with bleach -or- clinging bleach gel]]

<sup>22</sup> Clorox recycles -and/or- repurposes -and/or- reuses [**X%** of] waste [and sends remaining waste to energy facility] **X is a number up to 100%**

<sup>23</sup> [Replaces] [Toilet] Brush + -and/or- [Toilet] Cleaner -and/or- [Toilet] Disinfectant

<sup>§</sup> Compared to Clorox® Disinfecting ToiletWand Refills 6 c[oun]t

<sup>†</sup> Salmonella enterica<sup>[9]</sup>, Staphylococcus aureus, **plus viruses listed in footnotes 7 and 8 above**

[<sup>‡</sup> Viruses]

<sup>μμ</sup> based on lab test [with [Clorox®] manual toilet brush]

**Δ on hard, nonporous surfaces.**

