



OFFICE OF CHEMICAL SAFETY AND POLLUTION PREVENTION

WASHINGTON, D.C. 20460

June 21, 2024

Christina Wilkinson
Agent
The Chlorox Company
Electronic Transmittal: cwilkinson@srcconsultants.com

Subject: Notification per PRN 98-10 – Updating two marketing claims
Product Name: SWAN
EPA Registration Number: 5813-89
Received Date: 3/7/2024
Action Case Number: 00557432

Dear Christina Wilkinson:

The Agency is in receipt of your Application for Pesticide Notification under Pesticide Registration Notice (PRN) 98-10 for the above referenced product. The Antimicrobials Division (AD) has conducted a review of this request for its applicability under PRN 98-10 and finds that the action requested falls within the scope of PRN 98-10.

The label submitted with the application has been stamped “Notification” and will be placed in our records.

Should you wish to add/retain a reference to the company’s website on your label, then please be aware that the website becomes labeling under the Federal Insecticide Fungicide and Rodenticide Act and is subject to review by the Agency. If the website is false or misleading, the product would be misbranded and unlawful to sell or distribute under FIFRA section 12(a)(1)(E). 40 CFR 156.10(a)(5) lists examples of statements EPA may consider false or misleading. In addition, regardless of whether a website is referenced on your product’s label, claims made on the website may not substantially differ from those claims approved through the registration process. Therefore, should the Agency find or if it is brought to our attention that a website

contains false or misleading statements or claims substantially differing from the EPA approved registration, the website will be referred to the EPA's Office of Enforcement and Assurance.

If you have any questions, please contact Aline Heffernan via email at Heffernan.aline@epa.gov.

Sincerely,

A handwritten signature in cursive script, appearing to read 'Aline Heffernan'.

Aline Heffernan
Senior Regulatory Advisor
Immediate Office
Antimicrobials Division
Office of Pesticide Programs

Label identification

NOTIFICATION

5813-89

SWAN, EPA Reg. No. 5813-89

The applicant has certified that no changes, other than those reported to the Agency have been made to the labeling. The Agency acknowledges this notification by letter dated:

R0674220

12:00 2/29/24

06/21/2024

Formatting notes (applicable for all claims)

Now[!] -and/or- **New[ly][!]** -and/or- **Improved[!]** may be added anywhere to a claim and will be used only for the first 6 months of product on shelf.

Optional text may be placed anywhere on the label -and/or- container.

Bold, italicized text is information for the reader and is not part of the label.

Bracketed information is optional text.

All footnotes are on the last page, unless they are part of EPA's mandated text.

The word "and" may be substituted with "&". Plural words may be used in their singular form or singular words may be used in their plural form unless otherwise specified in 40 CFR.

All directions may be written in numbered form or in paragraph form.

The terms "urinal"/"urinals" can be substituted or added where the terms "toilet"/"toilets" appear.

All final labeling will contain cleaning instructions.

All use sites on the label may be listed in conjunction with an image of the use site.

Highlighted text is new. Strike-through text means removed.

SWAN

KEEP OUT OF REACH OF CHILDREN

DANGER: CORROSIVE

See back panel for additional precautionary labeling.

ACTIVE INGREDIENT:

Sodium Hypochlorite 2.4%

OTHER INGREDIENTS: 97.6%

TOTAL: 100.0%

[Contains 2.28% available chlorine]

Contains no phosphorus

NET Contents: _____

PRECAUTIONARY STATEMENTS

Hazards to Humans and Domestic Animals

DANGER: CORROSIVE.

Causes irreversible eye damage. Causes skin irritation. Prolonged or frequently repeated skin contact may cause allergic reactions in some individuals. Do not get in eyes, on skin, or on clothing. For prolonged use, wear gloves. Wash thoroughly with soap and water after handling and before eating, drinking, chewing gum, using tobacco or using the toilet. Remove and wash contaminated clothing before reuse. [Use only in well-ventilated areas.]

FIRST AID:

IF IN EYES: Hold eye open and rinse slowly and gently with water for 15-20 minutes. Remove contact lenses, if present, after the first 5 minutes, then continue rinsing eye.

IF ON SKIN OR CLOTHING: Take off contaminated clothing. Rinse skin immediately with plenty of water for 15-20 minutes.

IF SWALLOWED: Call a poison control center or doctor immediately for treatment advice. Have person sip a glass of water if able to swallow. Do not induce vomiting unless told to do so by the poison control center or doctor. Do not give anything by mouth to an unconscious person.

IN ALL CASES, call a poison control center or doctor for treatment advice.

Have the product container or label with you when calling a poison control center or doctor, or going for treatment. Clorox Information Line: 1-800-227-1860

NOTE TO PHYSICIAN: Probable mucosal damage may contraindicate the use of gastric lavage.

Physical and Chemical Hazards:

STRONG OXIDIZING AGENT: Mix only with water according to label directions. Mixing this product with chemicals (e.g., ammonia or acids) may release hazardous gases irritating to eyes, lungs, and mucous membranes.

[Avoid contact with clothes, fabric, carpet, wood, painted and paper surfaces.]

QUESTIONS? COMMENTS? Please visit us at www.clorox.com or CALL 1-800-227-1860

For more [product -and/or- ingredient] information, visit IngredientsInside.com -or- *insert website(s)*.

For [a] Spanish translation of product directions -or- instructions -or- information, visit *insert website*.



Mfd. for & ©YYYY The Clorox Company,
1221 Broadway, Oakland, CA 94612

Made in [the] U.S.A. [of global components -and/or- ingredients.]

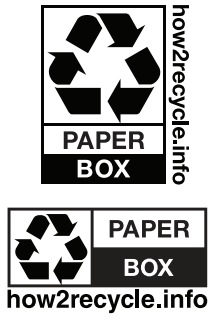
EPA Reg. No. 5813-89

EPA Est. No. 5813-CA-6 (TPP), GA-1 (A4), GA-2 (VG), IL-2 (VF), CA-3 (A8 or H8); 58455-IN-1 (C6), IN-2 (O1); 71681-IL-1 (O3), IL-2 (24); 71106-GA-2 (E8)

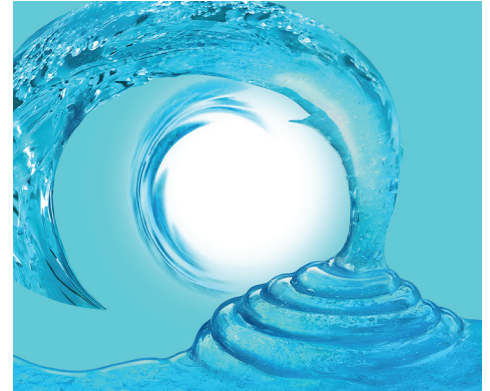
Beginning of batch code indicates Est. No.

Patents: www.thecloroxcompany.com/patents

Optional Graphics



Scent descriptor icons



This graphic is for a cross-promotional claim for another product



DIRECTIONS FOR USE

It is a violation of Federal law to use this product in a manner inconsistent with its labeling.

To Open Child Resistant Cap -or- Closure:

Squeeze sides [of cap -or- closure] where symbols -or- arrows indicate and twist counterclockwise one quarter turn. [Cap -or- closure] does not come off. To reseal -or- To close [tightly], turn [cap -or- closure] clockwise [until tightly closed].
-or- Squeeze and twist to open. Close tightly.
[Use in well-ventilated area.]

To Clean, Sanitize, and/or Disinfect Toilet Bowl:

- [1] Flush toilet [before cleaning] and preclean visibly soiled surfaces. [To open: Squeeze and turn.] [Cap does not come off.]
[Lower cap so bottle is below the rim.]
- [2] Apply 6 [fl] oz -or- 1/4 of bottle -or- 3/4 cup [of this product] under and around rim to coat the inside of bowl.
- [3] Scrub entire bowl [with a stiff brush] and allow surface to remain visibly wet for 5 min[utes] for sanitizing -and/or- 10 min[utes] for disinfecting.
- [4] Do not allow pets or children to access the toilet during this time.
- [5] Flush toilet. [Rinse brush in fresh water after use.] [Close cap after each use.]

(Note that prolonged contact with metal, old porcelain or worn plastic laminate may cause discoloration. In addition, do not use with ammonia, as hazardous gases may be released.)

The following graphics may be used with above DFU language



Residential/Household uses

Storage and Disposal:

Store in a location inaccessible to children. Tightly close cap between uses. Nonrefillable container. Do not reuse or refill this container. Offer for recycling, if available or place in trash.

Antimicrobial Claims

- **Xx** -or- **X**-in-1 action[:][.] Cleans -and/or- Disinfects -and/or- Deodorizes -and/or- Whitens -and/or- Removes Stains -and/or- Destroys Stains
- A bleach product for toilet bowl cleaning and disinfecting
- A bleach product for toilet bowl cleaning and sanitizing
- A toilet bowl product for cleaning and disinfecting [against Staphylococcus aureus [(Staph)], Salmonella enterica **tested as Salmonella choleraesuis** [(Salmonella)], Pseudomonas aeruginosa [(Pseudomonas)], Candida albicans [(Candida)], Enterococcus -or- Streptococcus faecalis [(Enterococcus)], Influenza A2 Virus, Rhinovirus [39], -and/or- Rotavirus [in 10 min[utes]]
- Also kills 99.9% of Klebsiella pneumoniae [(Kleb)] and Staphylococcus aureus [(Staph)]!
- An effective sanitizer [for use in the bathroom toilet]
- Bactericidal [formula -or- action]
- Bactericidal[formula] -or- Disinfecting [formula]
- Bacteria-killing -or- Germ-killing -or- Virus[‡] killing formula
- Bactericide -and/or- Bactericidal -and/or- Virucide[‡] -and/or- Virucidal[‡] -and/or- Germicide -and/or- Germicidal
- [Bleach] Toilet bowl sanitizer
- Bleach toilet bowl disinfectant [-and/or- cleaner]
- Brightens as it cleans and disinfects²
- Broad spectrum disinfectant [cleaner²]
- Cleans and kills 99.9% of germs
- Cleans, kills 99.9% of germs -or- sanitizes and freshens with the effectiveness of Clorox[®] bleach
- Cleans -and/or- brightens -and/or- deodorizes[with the power of [Clorox[®]] bleach]
- Cleans, sanitizes -or- kills 99.9% of germs, and deodorizes
- [Cleans,] [whitens,] [brightens] and sanitizes -or- kills 99.9% of germs
- Disinfect[s]
- Disinfecting bleach cleaner for toilet bowls
- Disinfects [and cleans] toilet bowl surfaces [against Staphylococcus aureus [(Staph)], Enterococcus -or- Streptococcus faecalis [(Enterococcus)], Salmonella enterica **tested as Salmonella choleraesuis** [(Salmonella)], Pseudomonas aeruginosa [(Pseudomonas)], Candida albicans [(Candida)], Influenza A2 Virus, Rhinovirus [39], -and/or- Rotavirus [in 10 min[utes]]
- Disinfects [and cleans your toilet] [against Salmonella enterica **tested as Salmonella choleraesuis** [(Salmonella)], Staphylococcus aureus [(Staph)], and Enterococcus -or- Streptococcus faecalis [(Enterococcus)]]
- Disinfects [your toilet bowl]
- Disinfects against -or- Kills [common] toilet bowl bacteria -or- germs: Staphylococcus aureus [(Staph)], Enterococcus -or- Streptococcus faecalis [(Enterococcus)], Salmonella enterica **tested as Salmonella choleraesuis** [(Salmonella)], Pseudomonas aeruginosa [(Pseudomonas)], Candida albicans [(Candida)], Influenza A2 Virus, Rhinovirus [39], -and/or- Rotavirus
- Disinfects and deodorizes by killing [common[†]] [toilet bowl] germs and controlling their odors
- Disinfects -and/or- Deodorizes [against odor-causing bacteria -or- germs]
- Disinfects hard, nonporous surfaces against SARS-CoV-2 [the cause of -or- the coronavirus that causes COVID-19] [in 10 min[utes]]
- Disinfects nonporous hard -or- solid surfaces of toilet bowls
- Disinfects under the rim
- Effective against -or- Kills SARS-CoV-2 [the cause of -or- the coronavirus that causes COVID-19] [in 10 min[utes]]^P
- [Effective] Toilet bowl disinfectant [in presence of [5%] soil load -or- organic soil]
- Eliminates odors caused by bacteria -or- germs -or- Controls odors produced by [common[†]] [toilet bowl] germs
- Germ-killing [formula]
- Has the effectiveness of Clorox[®] [bleach] to kill 99.9% of [household[†]] germs -or- bacteria
- In-bowl sanitizer
- Kills 99.9% of [common] [household] [odor-causing] bacteria: Klebsiella pneumoniae [(Kleb)] -and/or- Staphylococcus aureus [(Staph)] [in 5 min[utes]]
- Kills 99.9% of germs
- Kills 99.9% of Germs -and/or- Viruses[‡] -and/or- Bacteria + **-and/or- including COVID-19 Virus[‡]**
- Kills 99.9% of [household[†]] bacteria [in toilet bowl -and/or- on hard nonporous toilet bowl surfaces]
- Kills 99.9% of [household[†]] bacteria -or- germs
- Kills 99.9% of [household[†]] germs on hard nonporous toilet bowl surfaces
- Kills 99.9% of germs as it cleans²
- Kills 99.9% of household[†] germs -or- bacteria with the effectiveness of Clorox[®] [bleach]
- Kills 99.9% of the following organisms in 5 min[utes]: Klebsiella pneumoniae [(Kleb)] and Staphylococcus aureus [(Staph)]
- Kills -and/or- Disinfects Rotavirus
- Kills bacteria -or- germs while it cleans² [and disinfects]
- Kills germs^[†]
- Kills odor-causing bacteria
- Kills odor-causing bacteria: Salmonella enterica **tested as Salmonella choleraesuis** [(Salmonella)], Pseudomonas aeruginosa [(Pseudomonas)], Staphylococcus aureus [(Staph)], Enterococcus -or- Streptococcus faecalis [(Enterococcus)] in the toilet bowl
- Kills [common] bacteria: Staphylococcus aureus [(Staph)], Enterococcus -or- Streptococcus faecalis [(Enterococcus)], Salmonella enterica **tested as Salmonella choleraesuis** [(Salmonella)], -and/or- Pseudomonas aeruginosa [(Pseudomonas)]
- Kills [common] germs: Staphylococcus aureus [(Staph)], Enterococcus -or- Streptococcus faecalis, Salmonella enterica **tested as Salmonella choleraesuis** [(Salmonella)], Pseudomonas aeruginosa [(Pseudomonas)], Candida albicans [(Candida)], Influenza A2 Virus, Rhinovirus [39], -and/or- Rotavirus [in 10 min[utes]]
- Kills odor causing bacteria -or- germs in the toilet bowl
- Kills -or- controls [greater than 99.9% of] bacteria -or- germs
- Kills -or- Disinfects against -or- Effective against [the] COVID-19 virus[‡] -or- virus that causes COVID-19[‡] [in 10 min[utes]]

- Kills the flu virus^{††}
 - Leaves [toilet bowl] surfaces sanitized
 - Leaves toilet bowl sanitary
 - Removes stains and leaves toilet bowl sanitized
 - [Removes stains and] Leaves bowl sanitary -and/or- sanitized
 - Removes tough stains and kills 99.9% of germs
 - Sanitizer [for toilet use]
 - Sanitizes [toilet bowl] surfaces [in 5 min[utes]]
 - Sanitizes in 5 min[utes]
 - Sanitizes -or- Kills odor-causing bacteria[: Klebsiella pneumoniae [(Kleb)] -and/or- Staphylococcus aureus [(Staph)]]
 - Sanitizes toilet bowl surfaces [in 5 min[utes]]
 - Sanitizes under the rim
 - Sanitizes while it cleans³
 - Sanitizing -or- Bactericidal [formula]
 - Sanitizing bleach cleaner for toilet bowls
 - Tested [and proven effective] against SARS-CoV-2 [the cause of -or- the coronavirus that causes COVID-19] [in 10 min[utes]]^P
 - [Thick gel] Clings -and/or- Coats [under the rim] [to] Kill[s] 99.9% of [bacteria -and/or- germs] [under the rim]
 - This cleaner disinfectant combines cleaning and disinfecting²
 - This product cleans and disinfects simultaneously²
 - This product cleans and sanitizes simultaneously³
 - This product combines cleaning and sanitizing³
 - This product is a sanitizer for bowl surfaces [against Klebsiella pneumoniae [(Kleb)] and Staphylococcus aureus [(Staph)]]
 - This product kills 99% of Staphylococcus aureus [(Staph)] and Klebsiella pneumoniae [(Kleb)], common bacteria found on toilet bowl surfaces
 - This product kills Salmonella enterica **tested as Salmonella choleraesuis** [(Salmonella)], Staphylococcus aureus [(Staph)], and Enterococcus -or- Streptococcus faecalis [(Enterococcus)] found in -or- on the toilet bowl
 - Toilet bowl disinfectant [-and/or- cleaner]
 - Unique gel formula cleans and kills 99.9% of germs -or- sanitizes with the effectiveness of Clorox[®] bleach
- Disinfecting claims require 10 minute contact time**
Germ claims require 10 minute contact time

Emerging Viral Pathogen Claims

This product meets the criteria to make claims against certain emerging pathogen claims from the following viral categories:

- Enveloped viruses
- Large non-enveloped viruses

<i>For an emerging viral pathogen that is a/an...</i>	<i>... following the directions for use for the following organisms on the label:</i>
Enveloped virus	Rotavirus Rhinovirus 39
Large, non-enveloped virus	Rhinovirus 39

This product has demonstrated effectiveness against viruses similar to **insert name of emerging virus** on hard, nonporous internal toilet bowl surfaces. Therefore, **this product** can be used against **insert name of emerging virus** when used in accordance with the directions for use against **insert name of supporting virus(es)** on hard, nonporous surfaces. Refer to the CDC -or- OIE website **at insert pathogen-specific website address** for additional information.

Insert name of illness/outbreak is caused by **insert name of emerging virus**. **This product** kills similar viruses and therefore can be used against **insert name of emerging virus** when used in accordance with the directions for use against **insert name of supporting virus(es)** on hard, nonporous surfaces. Refer to the CDC -or- OIE website at **pathogen-specific website address** for additional information.

Disinfection Organisms		
Bacteria	ATCC or Strain	Contact Time
Enterococcus -or- Streptococcus faecalis [(Enterococcus)]	[ATCC 51299]	10 min[utes]
Pseudomonas aeruginosa [(Pseudomonas)]	[ATCC 15442]	10 min[utes]
Salmonella enterica tested as Salmonella choleraesuis [(Salmonella)]	[ATCC 10708]	10 min[utes]
Staphylococcus aureus [(Staph)]	[ATCC 6538]	10 min[utes]
Fungus	ATCC or Strain	Contact Time
Candida albicans [(Candida)]	[ATCC 10231]	10 min[utes]
Viruses Enveloped	ATCC or Strain	Contact Time
‡Influenza A2 Virus	[Charles River Laboratories]	10 min[utes]
‡SARS-CoV-2 [(cause of COVID-19)]	[Strain USA-WA1/2020]	10 min[utes]
Virus Large Non-Enveloped	ATCC or Strain	Contact Time
‡Rotavirus	[Strain WA]	10 min[utes]
Virus Small Non-Enveloped	ATCC or Strain	Contact Time
‡Rhinovirus [39]	[ATCC VR-340]	10 min[utes]
Sanitization Organisms		
Bacteria	ATCC or Strain	Contact Time
Staphylococcus aureus [(Staph)]	[ATCC 6538]	5 min[utes]
Klebsiella pneumoniae [(Kleb)]	[ATCC 4352]	5 min[utes]

Cleaning/Miscellaneous Claims

- 4X Cleaning Action[:][.] Cleans -and/or- Deodorizes -and/or- Whitens -and/or- Removes Stains -and/or- Destroys Stains
- **Xx** [the] Cleaning Power[:][.] Cleans -and/or- Deodorizes -and/or- Whitens -and/or- Removes Stains -and/or- Destroys Stains
- **X%** thicker¹ -or- **Xx** thicker¹
- [Also] Try Clorox® Automatic Toilet Bowl Cleaner₁ -and/or- Clorox® Bleach Automatic Toilet Bowl Cleaner II -or- **insert ABN** [to extend time between deep cleans -and/or- to keep your toilet fresh -and/or- sanitary -and/or- clean [with every flush]]
- [Also] Try Clorox® ToiletWand® Disposable Toilet Cleaning System -or- **insert ABN** [and eliminate that dirty brush]
- An effective cleaner for use in the toilet -or- on toilet surfaces
- Better cleaning power -or- formula
- Bleach in the bowl!
- Brightens -and/or- whitens [-and/or- removes [dirt] stains]
- Brightens and whitens your bowl
- Brightens -and/or- whitens as it cleans
- Brightens with the power of Clorox® bleach
- Cleaning power of [Clorox®] bleach in [one] [gel] [formula]
- Cleans [your toilet bowl]
- Cleans -and/or- deodorizes
- Cleans -and/or- deodorizes with the power of [Clorox®] bleach
- Cleans -and/or- freshens
- Clings -and/or- coats and rinses away for a [sparkling -or- deep] clean
- Complete -and/or- full -and/or- total coverage -or- coating -and/or- dispensing
- Clorox® [bleach] cleaning power
- Contains a powerful cleaner plus [Clorox®] bleach
- Contains cleaners
- Contains sodium hypochlorite plus a cleaner
- [Crisp -and/or- Sparkling] Lemon [Clean -and/or- Zest -and/or- Fresh] [Scent]
- Cleans and deodorizes the toilet bowl [water]
- Clinging action coats the bowl for deep-down cleaning
- Clings to sides of bowl better
- Coats the bowl to dissolve stains
- Concentrate[d] formula
- Contains biodegradable cleaning agents -and/or- cleaners -and/or- surfactants -and/or- soaps and detergents
- Contains no abrasives -or- acids
- Deodorizes and has a clean, fresh scent -or- fragrance
- Destroys toilet ring
- Dispenses [in] [a] wide [band] to completely -or- fully -or- totally coat the bowl
- Easy grip bottle
- Easy to use [for cleaning]
- Effectiveness of [Clorox®] bleach with a clean, fresh scent
- For [cleaning] use on both white and colored hard surfaces
- For a cleaner, fresher toilet
- For cleaner, fresher toilet -or- bathroom
- Freshens toilet bowl -or- bathroom
- Fully dissolves [in the bowl water] – no messy residue to remove
- Great -and/or- Strong -and/or- Powerful -and/or- Lasting -and/or- Lingering bleach smell -or- scent
- Great for toilets
- Has a clean, fresh scent -or- fragrance
- Has the [cleaning] power of bleach
- Helps keep [the -or- your] toilet [bowl] clean, clear, and free of odor
- Helps keep [the -or- your] toilet [bowl] fresh and clean
- Improved bottle
- Improved clinging action
- Improved Formula
- Improved scent
- Keeps [the -or- your] toilet [bowl] bleach-clean
- Leaves bathroom -and/or- toilet [bowl] fresh and clean
- Leaves the bowl bleach-fresh
- Leaves [the -or- your] [toilet] bowl bleach-clean!
- Leaves toilet -and/or- bowl sparkling clean
- Leaves toilet [surfaces] [clean and] sanitary
- Makes your [cleaning] job easier
- Manual -or- Bleach toilet bowl cleaner
- [New bottle.] Same great value
- Non-abrasive formula for cleaning -or- which will not scratch surfaces
- Non-abrasive formula [that will not scratch surfaces]
- Not harmful to plumbing and septic systems -or- Safe for [plumbing and] septic systems
- Ocean Mist [Scent]
- Our [thickest] toilet bowl cleaner [is **X%** thicker¹]
- Pleasant fragrance
- [Powerful] **Xx** cleaning -or- **X**-in-1 cleaning [power -or- action][:][.] Cleans -and/or- Deodorizes -and/or- clings [**XX%**] longer¹ -and/or- Whitens -and/or- Removes Stains -and/or- Destroys Stains
- Powerful clinging -and/or- coating gel [[and] stain removing -and/or- whitening -and/or- stain destroying -and/or- rust removing]] [action]
- Powerful clinging -and/or- coating gel [action -and/or- dissolves -or- eliminates tough stains]
- Prevents rust -and/or- hard water -and/or- toilet ring [build up]
- [Quickly] Destroys -and/or- powers through -and/or- eliminates [mold stains -and/or- mildew stains -and/or- bio stains] [without scrubbing]
- Rain Clean -or- Fresh [Breeze] -or- Mountain Fresh -or- Sparkling Wave -or- Cool Wave -or- Natural Breeze [Scent]
- [Removes -or- destroys] [strong enough to handle] tough stains [in seconds]
- Removes -or- Prevents -or- Eliminates odors
- Removes stains -and/or- leaves bowl sanitary
- Removes stains and whitens with the power of Clorox® bleach
- Safe for colored toilets -and/or- porcelain
- The bleach in this product breaks down almost entirely to salt and water -and/or- This bottle is made of ____% post-consumer recycled [HDPE] plastic -and/or- [This product is] [S]uitable for septic [systems] -and/or- wastewater systems -or- treatment plants
- The only [Toilet Bowl [Cleaner]] -and/or- [[clinging] gel] [with] -or- [that contains] Clorox® bleach
- [Thick -and/or- Powerful cleaning gel] clings [**XX%**] longer¹
- Thick Clorox® bleach toilet bowl cleaner

- Thick coating -and/or- clinging -and/or- gel -and/or- formula [with bleach]
- Thick formula
- Thick gel formula coats the bowl [and dissolves stains] for deep-down cleaning
- Thicker formula
- This product [with bleach] in a [unique] gel formula
- Twin -or- Value -or- 2 -or- 3 Pack
- Unscented
- Use this product undiluted in homes, schools, and other non-medical toilet bowl locations [such as][:] ***insert use site(s) from Table***
- Whitens and brightens
- Will not harm -or- Safe for plumbing or septic systems
- With clinging action
- With more bleach [in every bottle]
- Whitens with the power of Clorox® bleach
- Wide band -and/or- dispensing [for] [complete -and/or- full -and/or- total] [coverage -and/or- coating -and/or- dispensing] [with one quick motion -or- with one easy squeeze]
- Will not scratch surfaces
- Won't splash or drip [and will rinse away easily]
- www.Clorox.com

Use Sites

Airports	Convenience Stores	Institutional Facilities	[Public] Restrooms
Athletic Facilities	Day Care Centers	Institutions	Public Transportation Areas
Bars	Dressing Rooms	Jails	Restaurants
Bath Areas	Exercise Facilities	Libraries	Retail Centers
Bathrooms	Factories	Locker Rooms	Shopping Malls
[Business -and/or- Office] Buildings	Fitness Centers	Malls	Shower Areas
Cafeterias	Grocery Stores	Motels	Transportation Terminals
Campgrounds	Gyms	Nurseries	Universities
Colleges	Health Clubs	Offices	
	Hotels	Public Facilities	

Footnotes

¹ vs. ***Clorox® toilet bowl insert ABN***

² when used according to disinfection directions

³ when used according to sanitization directions

† Staphylococcus aureus [(Staph)], Enterococcus [(Streptococcus)] faecalis, Salmonella enterica ***tested as Salmonella choleraesuis***, Pseudomonas aeruginosa [(Pseudomonas)], Candida albicans, Influenza A2 Virus, Rhinovirus [39], -and/or- Rotavirus

†† Influenza A2 virus

‡ [Viruses]

✧ Kills SARS-CoV-2 on hard, nonporous surfaces

^p on hard, nonporous surfaces