

RECOMMENDATIONS

CROP	INSECT	RATE	REMARKS
Tomatoes	Tomato Pinworm	1 qt. per 100 gal. water	Do not apply within 14 days of harvest.
Cucumbers	Appl. etc.	1 qt. per 100 gal. water	Do not apply within 7 days of harvest.
Peas (English & Field)	Appl. etc.	1 qt. per 100 gal. water	Do not apply within 3 days of harvest.

* FOR AIRPLANE APPLICATION: Dilute with approximately 3 to 10 gallons of water per acre, consistent with crop growth and good coverage.

Use of this material in a manner or at a time other than in accordance with the directions may produce plant injury, excessive mortality or other undesirable results.

Keep out of contact with children and livestock. Do not use in or near water supplies. Do not use in or near streams, rivers, ponds, lakes, or other bodies of water. Do not use in or near water supplies.

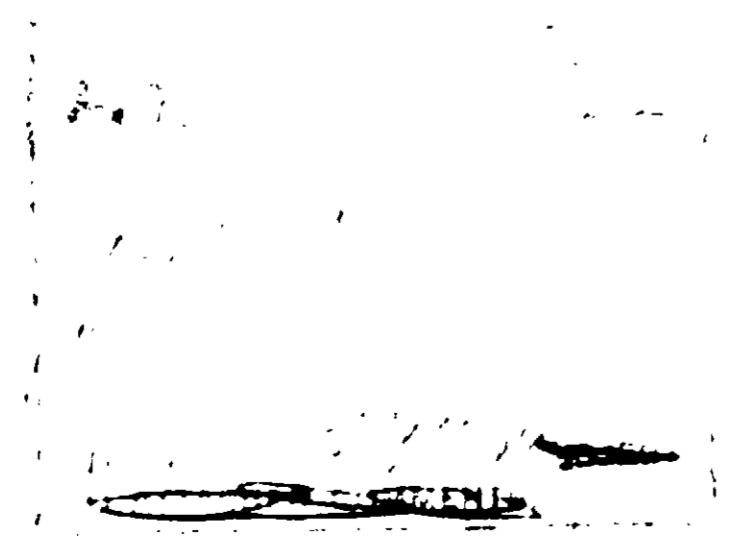
MALATHION EC

ACTIVE INGREDIENTS:	
Malathion (O, O-dimethyl dithiophosphate or diethyl mercaptosuccinate)	95.0%
Xylene	39.0%
INERT INGREDIENTS	6.0%
TOTAL	100.0%

CAUTION: KEEP OUT OF THE REACH OF CHILDREN AND ANIMALS.

See other cautions on side panels.

Manufactured By
CAROLINA CHEMICAL CORP.
 WILSON, N. C. USDA Reg. No. 5797-59 DURHAM, N. C.
 Net Contents: 1 Gallon



MALATHION EC

ACTIVE INGREDIENTS:

Malathion (O, O-dimethyl dithiophosphate of diethyl mercaptosuccinate) -----	55.0%
Xylene -----	39.0%

INERT INGREDIENTS: -----	6.0%
TOTAL	100.0%

CAUTION: KEEP OUT OF THE REACH OF CHILDREN AND ANIMALS.

See other cautions on side panels.

Manufactured By
CAROLINA CHEMICAL CORP.
WILSON, N. C. USDA Reg. No. 5797-59 DURHAM, N. C.
Net Contents 1 Gallon

CAUTION:

- Avoid breathing spray mist.
Harmful if swallowed.
Avoid contact with skin, wash thoroughly with soap and water.
Avoid contamination of feed and foodstuffs.

This product is toxic to fish.

Keep out of lakes, streams, and ponds.

This product is highly toxic to bees - exposed to direct treatment or residues on crops. Protective information may be obtained from your Cooperative Agriculture Extension Service.

NOTICE:

Carolina makes no warranty, express or implied, concerning the use of this product other than indicated on the label. Any use, application, or handling of this product at other than the recommended rate, or in any manner contrary to label directions, is at the user's risk.