

DuBOIS CHEMICALS • GENERAL OFFICES: CINCINNATI, OHIO • U.S.A.



**DIVISION OF CHEMED CORPORATION**

**—SOLELY FOR INDUSTRIAL USE—**

# KLOI

**ACTIVE INGREDIENTS** .....  
Sodium Phosphate .....  
Sodium Metasilicate Pentahydrate .....  
Sodium Dodecylbenzene Sulfonate .....  
Sodium Hypochlorite .....  
**INERT INGREDIENTS** .....

**DANGER**  
**KEEP OUT OF REACH OF CHILDREN**

**HIGHLY ALKALINE.** Causes eye irritation. Do not get in eyes; on skin or clothes. Wash thoroughly with water. Harmful to eyes and skin when handling. Harmful contamination of food.

ACT  
NO  
SEE THE  
INSTRUCTIONS  
FOR DANGER  
The following

PROD. NO. 02622

# KLORO-SPREX

<b>ACTIVE INGREDIENTS</b> .....	67.25%
Trisodium Phosphate .....	33.0%
Sodium Metasilicate Pentahydrate .....	29.0%
Sodium Dodecylbenzene Sulfonate .....	4.25%
Sodium Hypochlorite .....	1.0%
<b>INERT INGREDIENTS</b> .....	32.75%
	<b>100.00%</b>

## DANGER

KEEP OUT OF REACH OF CHILDREN

**HIGHLY ALKALINE.** Causes eye damage and skin irritation. Do not get in eyes; on skin or on clothing. Protect eyes and skin when handling. Harmful if swallowed. Avoid contamination of food.

## FIRST AID:

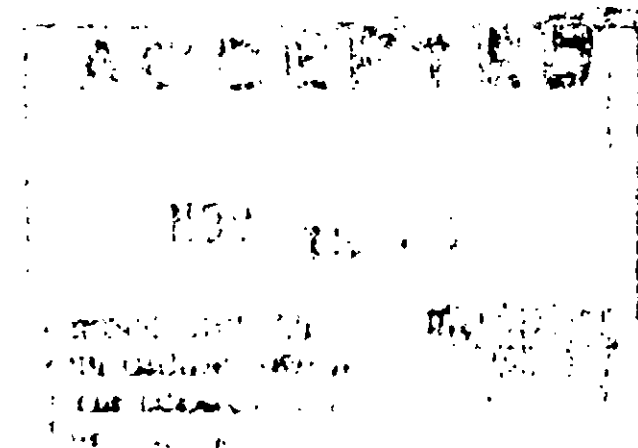
In case of contact, immediately flush eyes or skin with plenty of water for at least 15 minutes. For eyes, call a physician. Remove and wash contaminated clothing before reuse.

If swallowed, drink promptly a large quantity of milk, egg whites, gelatin solution or if these are not available, drink large quantities of water. Call a physician immediately.

## NOTE TO PHYSICIAN:

Probable mucosal damage may contraindicate the use of gastric lavage. Measures against circulatory shock, respiratory depression and convulsion may be needed.

This product averages 6.7% phosphorus in the form of phosphates which is equal to 1.9 grams per ounce of product.



D. NO. 02622

# -SPREX

## FIRST AID:

In case of contact, immediately flush eyes or skin with plenty of water for at least 15 minutes. For eyes, call a physician. Remove and wash contaminated clothing before reuse.

If swallowed, drink promptly a large quantity of milk, egg whites, gelatin solution or if these are not available, drink large quantities of water. Call a physician immediately.

## NOTE TO PHYSICIAN:

Probable mucosal damage may contraindicate the use of gastric lavage. Measures against circulatory shock, respiratory depression and convulsion may be needed.

This product averages 6.7% phosphorus in the form of phosphates which is equal to 1.9 grams per ounce of product.

## DIRECTION FOR USE:

**Preflush all equipment to remove excess soil.**

For general cleaning in restaurants, dairies, meat and food plants, use  $\frac{3}{4}$  ounce to 1 ounce per gallon depending on the type and amount of soil, followed by a water rinse. For cleaning and sanitizing food equipment, parts should have a minimum contact for at least two minutes where the sanitizing process consists of flowing over or through, or immersion in a  $2\frac{1}{2}$  ounce per gallon solution for 200 ppm available chlorine. Parts should be thoroughly cleaned, rinsed and allowed to dry before use.

**All Surfactants Used In This Product Are Biodegradable**

**EPA REGISTRATION NO. 5736-9-AA**

**KEEP LID CLOSED TO PREVENT CAKING**

EPA EST. 5736-TX-1 • DL-360 774