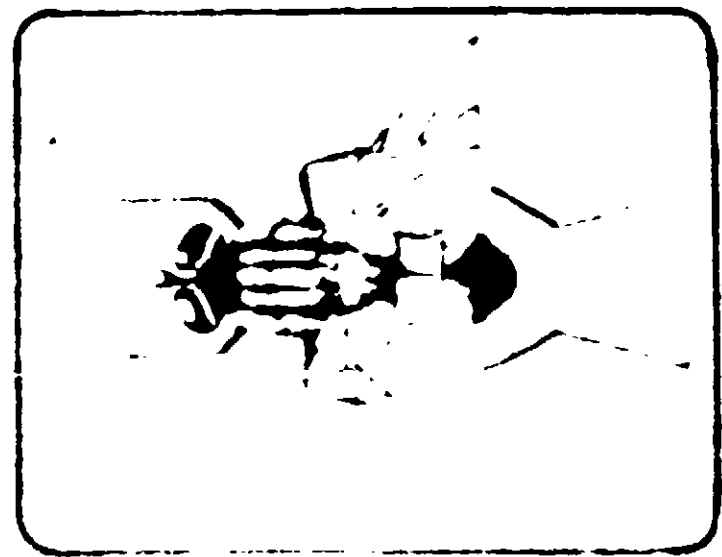


[5719-48]

# HOUSE and GARDEN INSECT SPRAY

**CONTROLS**  
FLIES MOSQUITOES GNATS  
ANTS ROACHES APHIDS  
LEAFHOPPERS SPOTTED MITES  
JAPANESE BEETLES THRIPS (Exposed)

INDOOR  
OUTDOOR  
PATIO  
YARD



**WARNING**  
Flammable. Contents under pressure. Do not puncture the can. Store upright in a cool place. Exposure to high temperature may cause bursting. Keep at room temperature away from direct sunlight, radiators, stove, hot water and other heat. Never throw in the fire or incinerator. May stain finished surface if sprayed too heavily. Do not contaminate food or food stuffs, utensils, dishes or drinking water. Do not spray on plastic, asphalt, tile or furniture. Harmful if swallowed. Avoid breathing of spray mist. Avoid contact with skin, wash skin and hands thoroughly after using. Do not spray around birds or fish.

### INDOOR

For use on **MOSQUITOES, GNATS, ANTS, THIRPS, MITES**, close all doors and windows. Spray with heavy coat. Remove all exposed foliage and plants. Hold spray nozzle 18 inches from foliage and sweep slowly across room with a slow, sweeping motion. Spray 10 to 15 seconds for average room. Keep nozzle 18 inches from surface. Keep nozzle 18 inches from ceiling after spraying. Remove persons and pets prior to use and ventilate room prior to re-entry. Do not make application where food is prepared or protected. Food handling utensils and equipment should be protected. Wash with potable water after exposure to mist. Repeat as needed.

To Kill **ROACHES AND WATERBUGS**, spray baseboards, cracks, crevices, moist areas and openings around sinks and pipes, behind cabinets, etc. where roaches hide. Hit as many insects as possible directly with the spray. Repeat as necessary.

To Kill **ANTS**, spray ant hills liberally. Spray ant trails over window and door sills and other locations. Repeat as needed.

For **HUGE PLANTS**, spray in short bursts, holding the can 18 inches from foliage to English ivy and African violets. Spray both sides of the leaves lightly. Do Not Wet. Repeat as often as necessary. Kills Aphids, Spider Mites, Exposed Thrips, Lace Bugs.

### OUTDOOR

For insects specified below on **Asters, Azaleas, Begonias, Chrysanthemums, Dahlias, Delphiniums, Gladiolus, Irises, Marigolds, Petunias, Roses, and Snapdragon**. Also for insects specified below on **Evergreens and Small Ornamental Deciduous Trees, Shrubs and Vines**.

When sprayed directly on insects this spray will kill sucking insects, **APHIDS, LEAFHOPPERS, SPOTTED MITES, THRIPS (Exposed)** and **LACE BUGS**. Kills chewing insects **ARMYWORM LARVAE, MEXICAN BEAN BEETLES, CLIMBING CUTWORMS** and **JAPANESE BEETLES** when sprayed directly.

For best results spray in evening or on a cloudy day when air is still. Use slow sweeping motion. Keep the can 18 inches from plants. Avoid wetting foliage with the spray. Spray rows at the rate of 1 foot per second. For heavy growth, spray row on both sides. Repeat as needed. Spray with caution on young plants and new growth. Do not spray when temperatures exceed 90°F.

For use on **Porches, Patios and in the yard and Picnic Area** to Kill **FLIES, MOSQUITOES, GNATS** and the **Small Flying Insects**. Fog the area liberally. Spray with the breeze allowing the fog to drift into shrubbery and other places where insects harbour. Repeat as necessary.

Do not use in food processing plants or commercial food preparation areas.

**CAUTIONS**: Contents under pressure. Do not puncture the can. Store upright in a cool place. Exposure to high temperature may cause bursting. Keep at room temperature away from direct sunlight, radiators, stove, hot water and other heat. Never throw in the fire or incinerator. May stain finished surface if sprayed too heavily. Do not contaminate food or food stuffs, utensils, dishes or drinking water. Do not spray on plastic, asphalt, tile or furniture. Harmful if swallowed. Avoid breathing of spray mist. Avoid contact with skin, wash skin and hands thoroughly after using. Do not spray around birds or fish.

**WARNING: FLAMMABLE!** Contents under pressure. Do not use near fire, sparks or flame. Do not puncture or incinerate container. Exposure to temperatures above 100°F may cause bursting.

**NOTICE**: Buyer assumes all risks. Use, storage and handling of this material must conform with directions given herewith.

EPA REG NO 5719-48

ACCEPTED  
MAY 29 1972  
5719-48

Cameraman's Note  
Poor Copy

**CAUTION** KEEP FROM REACHING CHILDREN

NET WT. 16 OZ (1 LB.)