

DIRECTIONS

Chacon Cutworm and Sowbug Control is formulated to attract and kill sowbugs and cutworms coming in contact with the pellets. For use around ornamentals, ground covers and lawns only.

FOR BEST RESULTS: Start treatment at first sign of pest activity. Water area first, then do not water for at least 24 hours. Spread pellets lightly over area. Apply at rate of one pound to 1000 sq. ft. Sowbugs and Cutworms feed mainly at night. It is best to put out the pellets in late afternoon or evening. Application should be repeated at 2-week intervals as long as needed.

CAUTIONS: Harmful if swallowed, inhaled, or absorbed through the skin. Avoid breathing dust. Do not take internally. Skin contact may be harmful. Avoid skin contact, wash hands and face before eating. Wear clean clothing. Avoid contamination of food. Do not reuse container. Destroy when empty. For protection of honeybees avoid unnecessary use during period they are visiting crop.

NOTICE: This material is sold without warranty as to hazards or results. Buyer assumes all responsibility in use.

EPA REG. NO. 5719-46

CHACON CHEMICAL CORPORATION
5245 Chakemco Street • South Gate, California 90280
A Subsidiary of Leisur Enterprises, Inc.

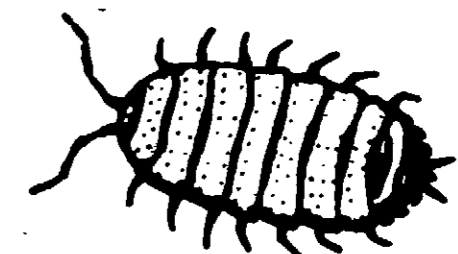
CHACON

CUTWORM & SOWBUG CONTROL

in GARDEN & LAWN



CUTWORM



SOWBUG

TREATS UP TO 1000 SQ. FT.

ACTIVE INGREDIENT:
Carbaryl (1-naphthyl N-methylcarbamate)* 5%
INERT INGREDIENTS 95%
*U.S. Patent Nos. 2,903,478 - 3,009,855

CAUTION: Keep out of Reach of Children - Other Cautions on Back Panel.

NET WEIGHT: 16 OZ. (1 LB.)