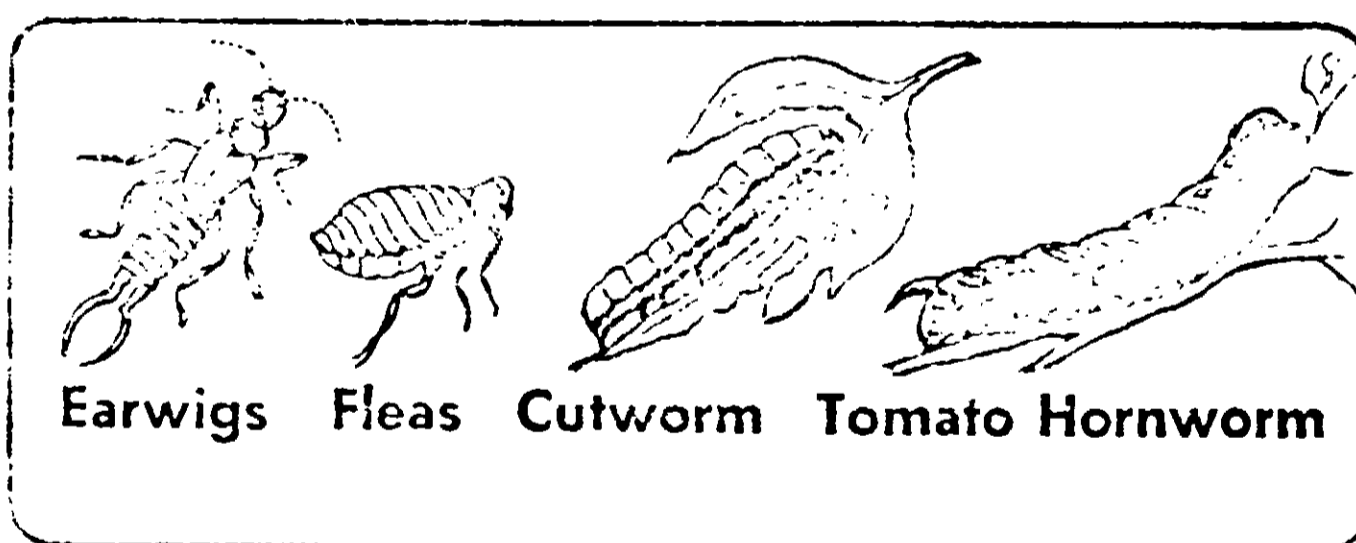


# SEVIN\* GARDEN DUST

VEGETABLES FLOWERS  
FRUITS ORNAMENTALS



ACTIVE INGREDIENT  
Carbaryl (1-naphthyl N-methylcarbamate)..... 5%  
INERT INGREDIENTS..... 95%  
U.S. Patent Nos. 2,803,473 - 3,003,888

Made in U.S.A. by Union Carbide Corporation for the active ingredient,  
1-naphthyl N-methylcarbamate

## SEVIN DUST

Read the entire label carefully. Use only as directed in accordance with label cautions and directions.

For best results apply in early morning or evening when air is still. Do not use in frosty weather. Avoid crop injury to tender foliage. Do not apply if plants are wet when treated or in the presence of high humidity.

## DIRECTIONS

Dust upper and lower leaf surfaces. Apply to soil around plant. Apply when insects first appear. Repeat as necessary.

**ORNAMENTALS:** Roses, Flowering Shrubs, Trees, Woody Plants, Foliage plants, Climbing Flowering Bees, etc. Do not use on ornamental plant does not bear fruit. Flowers, Exposed Thrips, Tent Caterpillars, Cutworms, etc.

**VEGETABLES:** Tomato, Egg Plant, Peppers to control Tomato Hornworm; Tomato Fruitworm; Lace, Stink and Tarnished Plant Bugs, Leafhoppers. Use up to day of harvest.

Cucumber, Squash, Pumpkin, Melon to control Melonworm, Cucumber Beetles, Flea Beetle, Leafhoppers, Squash Bugs. Use up to day of harvest.

Lettuce, Carrot, Cabbage, Broccoli, Cauliflower, Spinach, Brussels Sprouts, Kohlrabi, Swiss Chard, Radish, Beet, Turnip to control Armyworms, Flea Beetles, Leafhopper, Cutworm, Corn Earworm. Do not apply within 3 days of harvest. Do not apply within 14 days of harvest on Leaf Lettuce, Spinach and Swiss Chard. Do not treat Beets and Turnips within 14 days of harvest when tops are to be used as food.

Bean, Pea, Corn to control Leafhopper, Grasshoppers; Armyworm, Stink, Tarnished Plant Bugs, Cutworm, Japanese Weevil and Cucumber Beetles. Use up to day of harvest.

Strawberries, Raspberries, Rubberries, Blackberries to control Japanese Beetles, Leafhopper, Strawberry Weevil. Do not apply within 7 days of harvest.

**FRUITS and NUTS:** Apples, Pears, Walnuts to control Apple Aphid, Pear Psylla, Codling Moth. Do not apply to Apples until 30 days after bloom or 1 day before harvest on Apples and Pears. Peaches, Apricots, Nectarines to control June Beetles, Leaf Rollers, Plum Curculio, Cuckoo, Moth. Do not apply to Apples and Nectarines within 3 days of harvest, Peaches 1 day.

Cherries, Plums, Prunes to control Many Plum Aphids, Black Cherry Aphid, Plum Curculio, Prune Leafhopper, Leaf Miner. Do not apply within 1 day of harvest.

**CAUTIONS:** Harmful if swallowed or inhaled. Avoid breathing dust. Avoid contact with skin. Wash thoroughly with soap and water. Avoid contamination of feed and food stuff. Wear regular long sleeved clothing during application.

This product is highly toxic to birds and should not be treated near or over any birds. Precautions should be observed to avoid contact with birds. Do not use in areas where birds are likely to be present. Do not contaminate water by cleaning of equipment, or disposal of wastes. Apply this product only as specified on this label.

This product is toxic to fish and wildlife. Do not contaminate lakes, ponds, streams, woodlands and other non-crop areas. Do not apply when weather conditions favor drift from area treated. Do not apply where runoff is likely to occur. Do not contaminate water by cleaning of equipment, or disposal of wastes. Apply this product only as specified on this label.

**NOTICE:** Bayer assumes all risk of use, storage or handling of this material not in strict accordance with directions given here with.

**NOTE:** This package is sold by weight and package is full when packed, but due to fluffy nature, the material is inclined to settle.

EPA EST. No. 5719-CA-1 EPA REG. NO. 5719-36

**CHACON CHEMICAL CORPORATION**  
2600 Yates Avenue • City of Commerce, California 93040  
A Subsidiary of Bayer Corporation