

TERMITES: (Subterranean). Scrape open all tunnels and runways made by the insects. Mix 1 pint in 5 gallons of water and apply to all exposed timbers under wood structures or elsewhere where termites are likely to attack.

CAUTIONS: Harmful if swallowed. Avoid breathing spray mist. Avoid contact with skin, wash thoroughly with soap and water (contact with skin can cause toxic symptoms). For eyes, flush with water for 15 minutes, get medical attention. Avoid contamination of feed and food stuffs. Do not use on household pets or humans.

DO NOT USE, POUR, SPILL OR STORE NEAR HEAT OR OPEN FLAME.

This product is highly toxic to bees exposed to direct treatment or residuals on crops. Protective information may be obtained from your Cooperative Agricultural Extension Service.

This product is toxic to fish, birds, and other wildlife. Birds feeding on treated areas may be killed. Keep out of lakes, streams, or ponds. Do not contaminate water by cleaning of equipment, or disposal of wastes. Apply this product only as specified on the label.

NOTICE: Buyer assumes all risk of use, storage or handling of this material not in strict accordance with directions given herewith.

EPA REG. NO. 5719-24

CHACON CHEMICAL CORPORATION
5245 Chakemco Street • South Gate, California 90280

A Subsidiary of Leisure Enterprises, Inc.

CHACON

50% CHLORDANE SPRAY

CONTROLS

ANTS, SAND AND LAWN FLEAS, EARWIGS,
LAWN MOTH LARVAE, CUTWORMS, ARMYWORMS,
BRACHYRHINUS, CUCUMBER BEETLES,
SPIDERS, SCORPIONS, TERMITES.



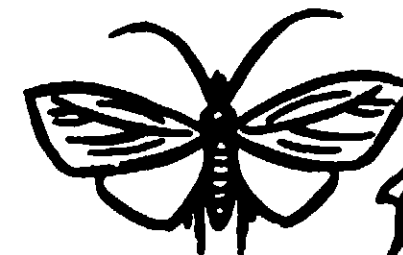
ANTS



EARWIGS



FLEAS



LAWNMOTHS



TERMITES

ACTIVE INGREDIENTS:

*Technical Chlordane.....50.0%

Aromatic Petroleum Derivative Solvent.....46.5%

INERT INGREDIENTS:.....3.5%

*Equivalent to 30% Octachloro — 4, 7 — methanotetrahydroindane and 20% related compounds.

CAUTION: KEEP OUT OF REACH OF CHILDREN
See back panel for additional cautions.

NET 16 FL. OZ. (1 PINT)

CHACON 50%
Read entire label carefully. Use in accordance with label cautions and directions. Do not spray. Make new mixture for each application.

DIRTY AREAS: For control of Roaches, Boxelder Bugs: Mix 1 pint in 5 gallons of water. Spray thoroughly under buildings, ant trails, walks, porches, and containers. Spot treat anthracnose with 1 spoonful in 1 gallon of water. For crevices and holes in fences, windows and doors.

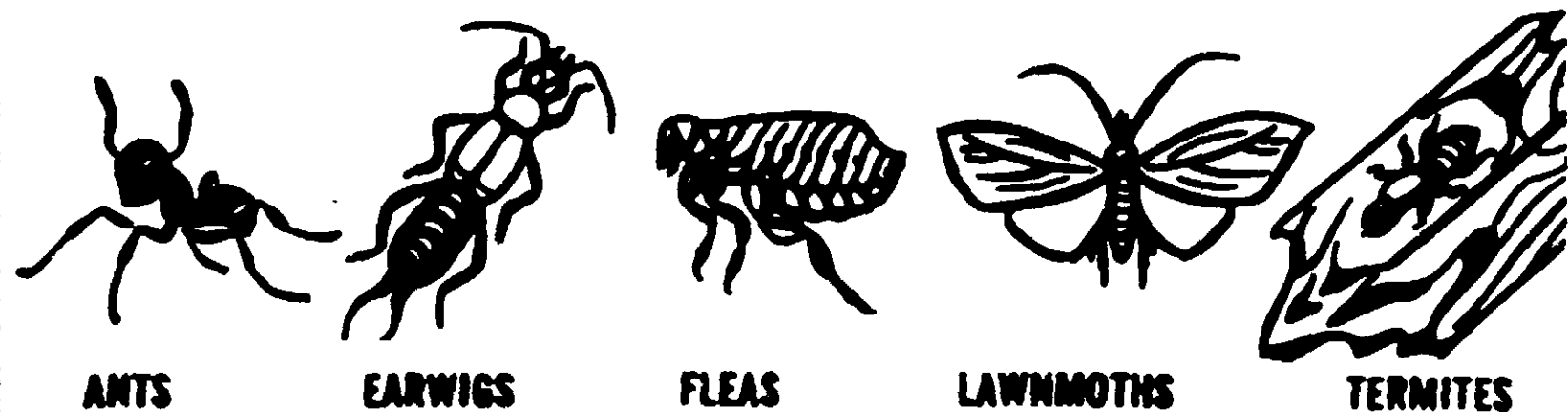
LAWN AREA: For control of Lawn Fleas, Chiggers, Cutworms, Beetle Grubs, White Grubs: Mix 1 tablespoonful in 1 gallon of water. For best results water lawn thoroughly. Where both surface and soil are controlled the directions are given. Hours after treatment, be sure to rake the soil. Raking the lawn will aid penetration when the procedure is necessary.

FLOWERS AND ORNAMENTALS: For control of Cucumber Beetles (Adults), Japanese Beetles (Adults): Mix 1 gallon of water. Spray plants thoroughly. Also spray in crevices under boards and similar areas. Repeat as necessary.

CHACON

50% CHLORDANE SPRAY

CONTROLS
ANTS, SAND AND LAWN FLEAS, EARWIGS,
LAWN MOTH LARVAE, CUTWORMS, ARMYWORMS,
BRACHYRHINUS, CUCUMBER BEETLES,
SPIDERS, SCORPIONS, TERMITES.



ACTIVE INGREDIENTS:
*Technical Chlordane.....50.0%
Aromatic Petroleum Derivative Solvent.....46.5%
INERT INGREDIENTS:.....3.5%
*Equivalent to 30% Octachloro — 4, 7 — methanotetrahydroindane and 20% related compounds.

CAUTION: KEEP OUT OF REACH OF CHILDREN
See back panel for additional cautions.

NET 16 FL. OZ. (1 PINT)

CHACON 50% CHLORDANE SPRAY
Read entire label carefully. Use only as directed in accordance with label cautions and directions. Do not store diluted spray. Make new mixture for each spraying.

DIRECTIONS

OUTSIDE USE: For control of Ants, Spiders, Earwigs, Roaches, Boxelder Bugs: Mix 2 tablespoonfuls in 1 gallon of water. Spray thoroughly around base of foundation of buildings, ant trails, walks, steps, porches, around garbage containers. Spot treat anthills. For Scorpions: Mix 10 tablespoonfuls in 1 gallon of water. Spray base above foundations, crevices and holes on walls, walks, patios, along fences, windows and door facings. Repeat as necessary.

LAWN AREA: For control of Lawn Moth Larvae, Sand and Lawn Fleas, Cicadas, Cutworms, Armyworms, Japanese Beetle Grubs, White Grubs, Brachyrhinus Grubs. Mix 2 tablespoonfuls in 1 gallon of water; apply to 170 sq. ft. For best results water lawn thoroughly before spraying. Where both surface and soil inhabiting insects are to be controlled the directions should include a wait of 24-40 hours after treatment, before washing the chemical into the soil. Raking the lawn prior to treatment also helps penetration when the product is washed in. Repeat as necessary.

FLOWERS AND ORNAMENTALS: For control of Brachyrhinus, Cucumber Beetles (Adults), Grasshoppers, Cutworms, Earwigs, Japanese Beetles (Adult). Mix 2 tablespoonfuls in 1 gallon of water. Spray plants and ground around plants. For best results for control of Earwigs: spray infested area thoroughly. Also spray in damp, shady areas, around and under boards and similar areas. Withhold water for 2 days. Repeat as necessary.

JAN 23 1974

ACCEPTED WITH COMMENTS