

DIRECTIONS FOR USE (cont'd.)

ranges, and other places where these insects alight or congregate.

FLEAS, CHIGGERS, ANTS AND BROWN DOG TICKS OUTDOORS: For treatment of localized infestations of these insects in outdoor areas where there is no vegetation, spray infested areas thoroughly. For ants, thoroughly wet hills and runways. Repeat applications as infestations warrant and as reinfestations occur.

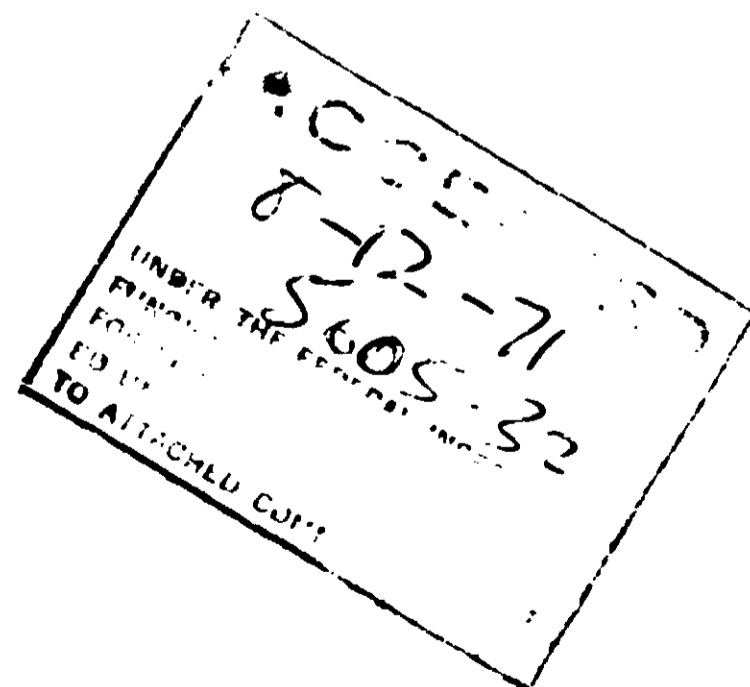
CAUTION

Harmful if swallowed. Keep out of reach of children. Avoid contamination of feed and foodstuffs. Avoid repeated or prolonged inhalation and skin contacts; wash thoroughly after using. Do not use on household pets or humans.

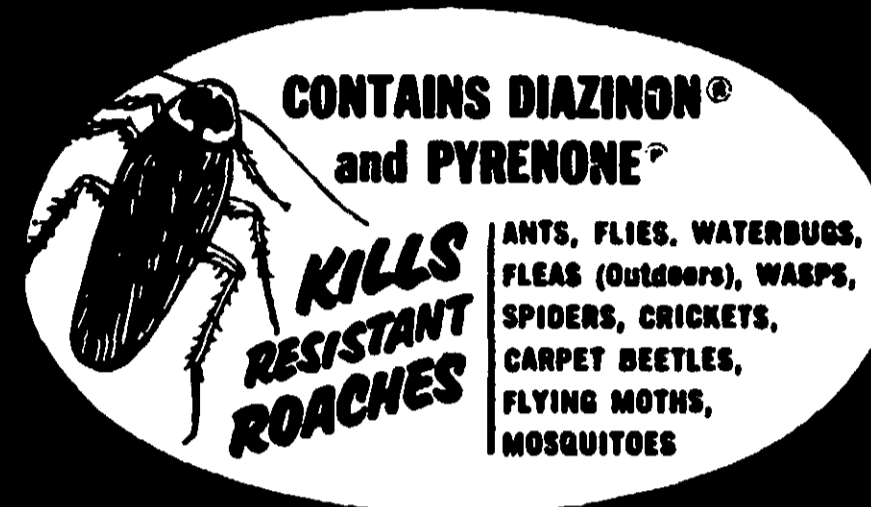
Keep container closed and away from heat and open flame. Do not spray into or near open flame. Do not smoke while spraying.

Manufactured for
FARMINGDALE GARDEN LABS., INC.
Farmingdale, L. I., N. Y.

U.S.D.A. REG. NO. 5605-32



HOUSEHOLD & INDUSTRIAL INSECT SPRAY



ACTIVE INGREDIENTS 100%

Petroleum Distillate, O-O Diethyl O-(2 isopropyl-4-methyl-6-pyrimidinyl)

Phosphorothioate, Technical Piperonyl Butoxide*, Pyrethrins

* Consists of (butyl carbityl) 6-propyl piperonyl ether and related compounds.

® GEIGY CHEMICAL CORPORATION U.S. Patent No. 2,754,243

® Registered Trade Mark F.M.C.

DIRECTIONS FOR USE

Spray infested surfaces only until wet.

ROACHES, ANTS, WATERBUGS, SILVERFISH, SPIDERS, CRICKETS: Spray thoroughly into all cracks, around baseboards and other places where these insects hide. Also spray until wet, surfaces behind and beneath cabinets, refrigerators, sinks, stoves, etc. Spray other localized areas infested with these pests. Repeat treatment as required.

CARPET BEETLES: Make localized application to areas of the floor and baseboards. Spray directly into cracks and under carpets where insects may be found. Treat crevices, cracks or closets and infested areas of shelvings. Repeat as necessary.

BROWN DOG TICKS: Thoroughly spray infested areas around baseboards, window and door frames, wall cracks, sleeping quarters of household pets and localized areas of floors and floor coverings. Applications should be repeated as infestations warrant and as reinfestations occur. Fresh bedding should be placed in animal quarters following treatment. Do not treat animals with this formulation.

FLIES, MOSQUITOES, WASPS AND FLYING MOTHS OUTDOORS: For outdoor use only as an aid in reducing annoyance from these insects. Spray outside surfaces of screens, doors, window frames or wherever these insects may enter the room. Also treat surfaces around light fixtures on porches, in ga-

HOW TO USE OUTDOORS

roaches and other places where there are no plants or grass.

FLEAS, CHIGGERS, ANTS AND BROWN DOG TICKS OUTDOORS

For treatment of localized infestations of these insects in outdoor areas where there is no vegetation, spray infested areas thoroughly. For ants, thoroughly wet hills and runways. Repeat applications as infestations warrant and as reinfestations occur.

CAUTION

Harmful if swallowed. Keep out of reach of children. Avoid contamination of food and foodstuffs. Avoid repeated exposure to skin, inhalation and skin contact. Wash thoroughly after use. Do not use on birds, household pets or man.

Keep container closed and away from heat and open flame. Do not spray into open flame or fire. Do not smoke while spraying.

ACTIVE INGREDIENTS 100%

Petroleum Distillate (O.D. Data) 100%

Net Weight 1.0 lb.

HOUSEHOLD & INDUSTRIAL INSECT SPRAY



ACTIVE INGREDIENTS 100%

Petroleum Distillate (O.D. Data) 100% (propyl 4-methyl-pyridine d.m.f.)

Phosphorothioate Technical Piperonyl Butoxide 100% Pyrethrin

100% (100% active ingredient) (100% active ingredient)

100% (100% active ingredient) (100% active ingredient)

100% (100% active ingredient) (100% active ingredient)

HOW TO USE OUTDOORS

Spray into cracks, crevices, etc., only.

ROACHES, ANTS, WATERBUGS, SILVERFISH, SPIDERS, CRICKETS

Spray thoroughly into all cracks, crevices and baseboards and other places where these insects hide. Also spray under curtains behind and beneath cabinets, refrigerators, sinks, stoves, etc. Spray other localized areas infested with these pests. Repeat treatment as required.

CARPET BEETLES: Make localized application to areas of the

floor and baseboards. Spray directly into cracks and under carpets where insects may be found. Test areas for cracks or fleas and infested areas of siding. Repeat as required.

BROWN DOG TICKS: Thoroughly spray the area under

baseboards, window and door frames, wall cracks, crevices, under household pets and localized areas of floors and floor coverings. Applications should be repeated as infestation warrant and as reinfestations occur. For a better result, should be placed in a warm, sheltered hollow, such as a hole in a tree trunk, where the ticks are found.

FLIES, MOSQUITOES, WASPS AND FLYING MOTHS OUTDOORS

For outdoor use, spray into cracks, crevices, etc., only. For indoor use, spray into cracks, crevices, etc., only. For outdoor use, spray into cracks, crevices, etc., only. For indoor use, spray into cracks, crevices, etc., only.