

[5605-27]

**ROSE & FLOWER
INSECTICIDE**

MAY BE USED ON: Roses, ASTERS, Azaleas, Carnations, Snapdragons, Crassula, Petunias, Rhododendrons, Delphiniums, Chrysanthemums, Iris, AFRICAN Violets, Marigolds, Grape Ivy, English Ivy, Camelleas, Euonymus, Dahlias.

GARDEN INSECTS: For use against Japanese Beetles, Leaf-Hoppers, Aphids, Exposed Thrips, and adult White Flies: Holding can 2½ feet from plants, spray with one second bursts using a sweeping motion. Direct spray on insects. Spray all sides covering foliage lightly. Never wet heavily. New growths and young plants should be handled with particular care. Avoid using in direct sunlight and during hottest daylight hours. Repeat when necessary. DO NOT spray Cyclamen, Lantana or Maiden-Hair fern.

Activated for Quicker Kill • Non-Staining
Contains Pyrethrins — Nature's Own Insecticide

WARNING: Cover fish bowls and remove birds for one hour when spraying rooms.

WARNING: Contents under pressure. Do not puncture. Do not use or store near heat or open flame. Exposure to temperatures above 130°F may cause bursting. Never throw container into fire or incinerator.

Foods should be removed or covered during treatment. All food processing surfaces should be covered during treatment or thoroughly cleaned before using. When using the product in these areas, apply only when the facility is not in operation.

Avoid Contamination of Food and Feed Stuff

KEEP OUT OF REACH OF CHILDREN

Distributed by:
FARMINGDALE GARDEN LABORATORIES, INC.
136 Verdi Street, Farmingdale, L. I., N.Y. 11735

E.P.A. REG. NO. 5605-27

146 & 194



UNDER THE FEDERAL INSECTICIDE
FUNGICIDE AND ROBOTIC ACT
PROVEN PRODUCTED COMMERCE

ACCEPTED
Sep 17, 1973

**HOME & GARDEN
INSECT BOMB**

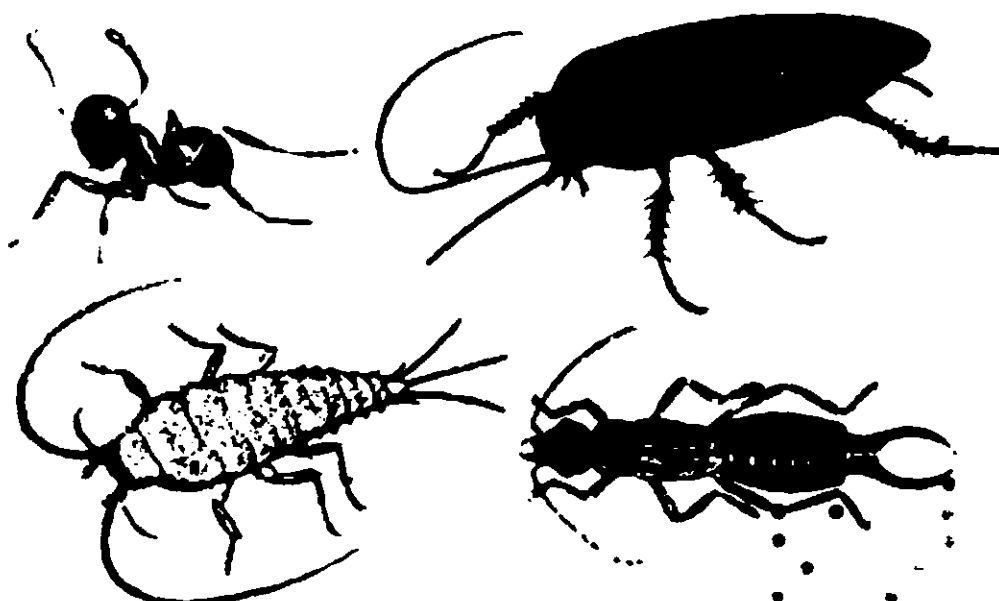


**FOR INSECTS ON
ROSES AND FLOWERS**

Kills:

Flies, Mosquitoes, Gnats, Roaches, Ants,
Bedbugs, Carpet Beetles, Silverfish,
Spiders, Waterbugs, Japanese Beetles,
Aphids, Exposed Thrips, Leaf Hoppers.

KILLS HOUSEHOLD INSECTS



CAUTION: Keep out of reach of children. Contents under pressure. Read Precautions on back before using.

DIRECTIONS

Shake Gently Before Using

Hold can upright with opening in valve directed away from you and toward area to be treated. Press button to release spray. Hold container 2 feet from objects when spraying.

FLYING HOUSEHOLD INSECTS: Flies, (including DDT-resistant strains) Gnats, Mosquitoes. Close doors and windows of room and remove pets, birds, and fish. Then proceed to spray all parts of room with sweeping circular motion. (Hit insects directly with spray where possible). Keep room closed for 15 minutes after spraying. Fill room with mist.

Do not remain in treated areas. Ventilate the area after treatment is completed.

CRAWLING HOUSEHOLD INSECTS: (Roaches, Ants, Bedbugs, Silverfish, Spiders.) When possible, use spray directly on insects, or spray insects' hiding places, under sinks, stoves, in crevices, around doorsills, pipes, window frames, storage areas, refuse areas, etc. For Ants, spray ant-trails. Avoid direct spraying of foods. Spray mattresses and beds for bedbug control. Repeat as necessary.

CLOTHES MOTHS AND CARPET BEETLES: Woolens must be cleaned thoroughly before using this spray. Spray garments thoroughly from a distance of two feet. Do not overlook folds and seams when spraying. Unless garments are stored in a mothproof container, monthly application is suggested. Interior surfaces of storage closets and trunks should be thoroughly sprayed. Repeat as necessary.

Active Ingredients

Pyrethrins	0.15%
N-Octyl Bicycloheptene	
Dicarboximide	0.30%
*Technical Piperonyl Butoxide	0.54%
Petroleum Distillates	9.01%

10.00

Inert Ingredients

90.00

100.00%

*Equivalent to 0.43% (butylcarbityl) (6-propylpiperonyl) ether and 0.11 other related compounds.

NET WT. 1.85 OZ. AVOIR. (14 FL. OZ.)