

ACCEPTED

KORLAN 24E

1950

UNITED STATES
DEPARTMENT OF AGRICULTURE
BUREAU OF PLANT INDUSTRY
WASHINGTON, D.C.

5662-47



UNITED STATES
Chemical and Equipment



INSTRUCTIONS

FOR THE APPLICATION

OF THIS PRODUCT

101

CAUTION
KORLAN
DIRECTIONS

TYPE A
INSECTICIDE

Use on White
Flour, Beans, Lentils,
Soybeans, Corn,
Rice and Sheep Kedds

I

Use on
Cotton, Tobacco,
Soybeans, Corn,
Rice, etc.

Use on
Cotton, Tobacco,
Soybeans, Corn,
Rice, etc.

II

Use on
Cotton, Tobacco,
Soybeans, Corn,
Rice, etc.

Use on
Cotton, Tobacco,
Soybeans, Corn,
Rice, etc.

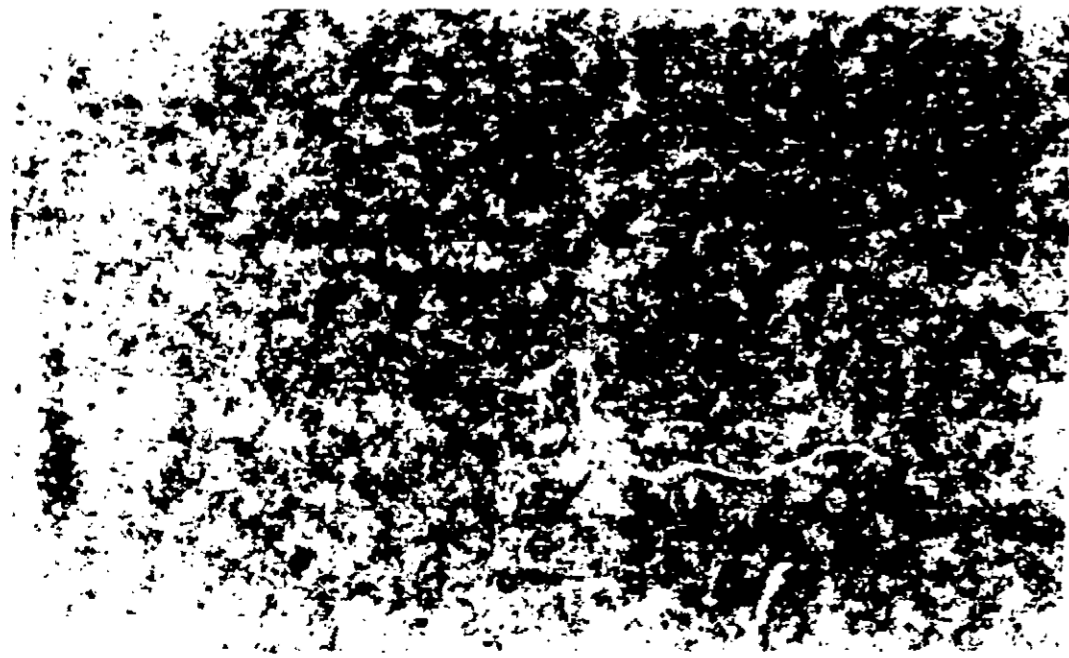
Use on
Cotton, Tobacco,
Soybeans, Corn,
Rice, etc.

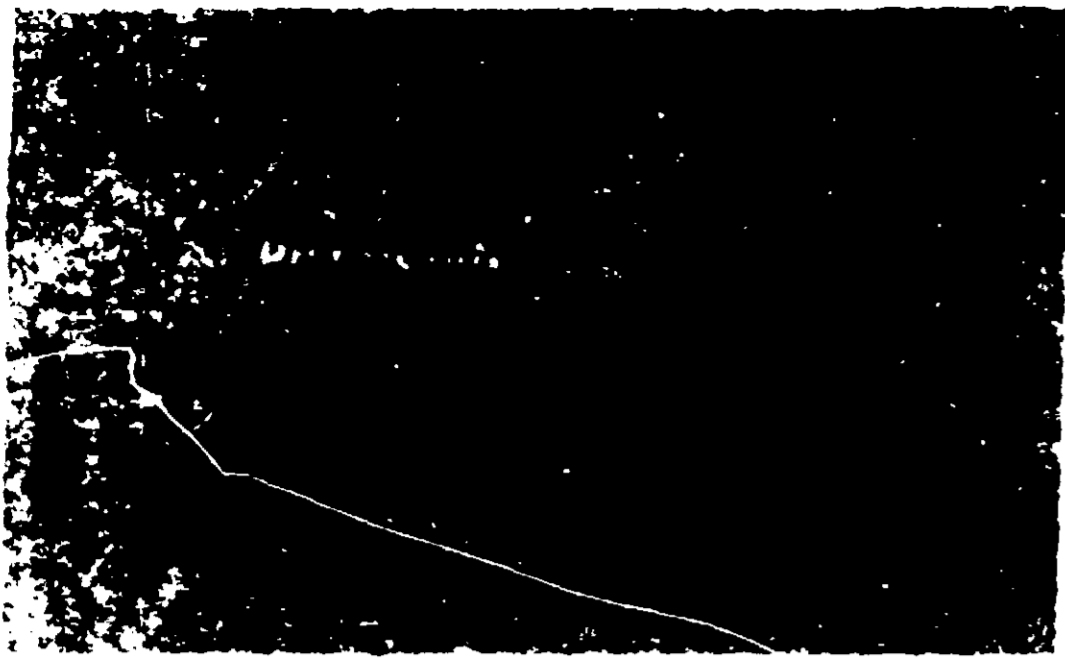
Use on
Cotton, Tobacco,
Soybeans, Corn,
Rice, etc.

Use on
Cotton, Tobacco,
Soybeans, Corn,
Rice, etc.

Use on
Cotton, Tobacco,
Soybeans, Corn,
Rice, etc.

Use on
Cotton, Tobacco,
Soybeans, Corn,
Rice, etc.





WARNINGS

Use spray only within 6 weeks and 5 days of date within 11 weeks of slaughter. Use only on fresh meat within 8 weeks of date of slaughter. Do not use on daily animal products. Do not use on animals within 21 days of slaughter. Do not use on birds of prey. Do not use on wild birds. Do not use on fish. Do not use on shellfish. Do not use on dairy products. Do not use on honey. Do not use on maple syrup. Do not use on maple syrup. Do not use on maple syrup. Do not use on maple syrup.

PRECAUTIONS

Keep away from children and pets. Do not use in areas where children and pets play. Do not use in areas where children and pets play. Do not use in areas where children and pets play. Do not use in areas where children and pets play.

WATER EMULSIFIABLE
OIL SOLUBLE



1 GALLON

ACTIVE INGREDIENTS
Diazinon 10% D.D. Formulation
Chlorobutylate
Krotonec, Destrucol
and 11 products
U.S.A. Registered No. 100000
Manufactured by The Dow Chemical Company
Dow Chemicals Co., 1801 Broadway, New York, N.Y.
(Contains 2.8 pounds active ingredient)

CAUTION
KEEP OUT OF REACH
OF CHILDREN
Read Complete Precautions
on Side Panel



THE STATES
Chemical and Equipment
2000 10th Street
INDIANAPOLIS, INDIANA

- ✓ Fly Processing Plant
- ✓ Restaurants, Supermarkets, Hotels, Public Buildings, Processing Plants, etc.
- ✓ Buildings - including homes and box handling
- ✓ Restaurants, Supermarkets, Hotels, Public Buildings, etc.
- ✓ Fly Processing Plant
- ✓ Meat Processing Plants, Poultry Processing Plants
- ✓ SCULLAMBOURNS
- ✓ Flies and spiders in homes and animals
- ✓ Bedbugs in homes, hotels, etc.
- ✓ Flies, gnats and wasps
- ✓ Kites, crickets, etc.
- ✓ Silverfish
- ✓ Flies, gnats, etc.

ACCEPTED

5602-47

HUB STATES
Chemical and Equipment

KORLAN
24E
INSECTICIDE

WATER EMULSIFIABLE
OIL SOLUBLE

CAUTION—COMBUSTIBLE MIXTURE

KORLAN 24E

DIRECTIONS KORLAN 24E

TYPE AND USE	Amount Korlan 24E to use for				REMARKS
	1/2 gallon	1 gal	5 gal	25 gal	
LIVESTOCK INSECTS— Cattle, Cattle, Horses, etc. Ticks, Lice, and other parasites Sheep, Goats, Lambs, and Kids Screw worms, walling maggots, etc. lice and sheep ked					See warning on 1 ft panel Treat as directed but do not exceed that quantity per acre and do not spray more than once per season.
DOMESTIC HOUSEHOLD USE— Stable flies Dairy barns General (houseflies)					Apply to the surface of the fly breeding areas. Apply to the surface of the fly breeding areas. Apply to the surface of the fly breeding areas.
GENERAL HOUSEHOLD USE— Houseflies					Apply to the surface of the fly breeding areas.

I

II

III

ABLE

d pest
se

7 GALLONS

CAUTION

KEEP OUT OF REACH
OF CHILDREN

Read Complete Precautions
on Side Panel

TATEN

Equipment

NOISE

6.197.60292

Use	1.4 oz	1.0 oz	1.0 oz	1.0 oz	1.0 oz	1.0 oz
Food Processing Plants						
Dwellings - Inside Areas, including Kitchens, Dining Rooms						
Restaurants, Supermarkets, Etc., but not Drive-Through						
Trucks, Buses, etc.						
FLY BAIT - Apply to windows, sills, and doors using wooden blocks						
DISINFECTANT - Apply to spray in bathrooms and kitchens						
Buildings - Including dwellings, schools, hospitals, and banks, handling perishable products						
Restaurants, Supermarkets, Etc., but not Drive-Through						
Food Processing Plants						
Meat Packing Plants Poultry Processing Plants						
MISCELLANEOUS INSECTS						
Flies and spiders Use for home						
Bedbugs - Including bedbugs and lice on beds and furniture						
Flies - Flies and mosquitoes Kills fleas and ticks Steerfish						

Spray when not in operation. Clean
up and equipment. Do not allow
to dry on surfaces.

Spray to point of wetness.

Spray in areas where insects
have and relate area.

Spray in areas where insects
are known to be present.

Application of this product should be
made in the following manner: 1. Spray
thoroughly in all areas where
insects are likely to be present.

Apply to surfaces as described
on label.

Apply to areas where insects are
likely to be present. Spray
thoroughly and in corners. Use a
triggered spray for best results.

Spray when not in operation. Clean
up and equipment.

Spray on walls and surfaces. Use
in areas where insects are likely
to be present.

Spray in areas where insects are
likely to be present. Use in
protected areas. Keep children
out of treated areas.

Spray in areas where insects are
likely to be present.

Crunch Bugs - Use on floors, especially
in areas where they are likely to be
found. Use on walls, especially in
areas where they are likely to be
found. Use on furniture, especially in
areas where they are likely to be
found.

Apply to areas where insects are
likely to be present. Use in
protected areas. Keep children
out of treated areas.