

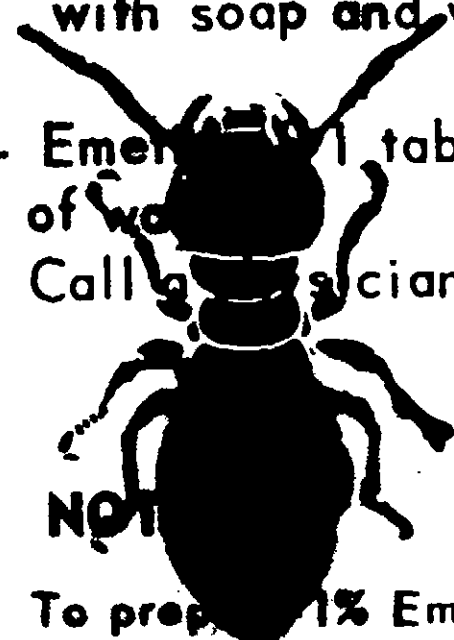
**CAUTION:**

Harmful if swallowed. Repeated or prolonged contact with skin can cause toxic symptoms. Avoid breathing spray mist. In case of contact with skin, wash with soap and water. Avoid contamination of feed and food-stuffs. Keep out of reach of children.

**ANTIDOTE:**

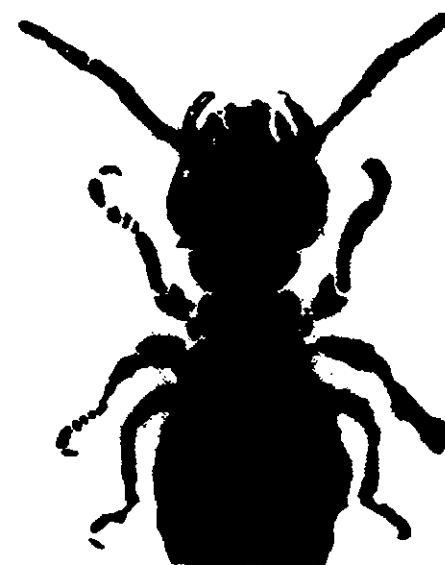
External — In case of spillage on skin, wash promptly with soap and water.

Internal — Emergently 1 tablespoonful mustard in tumbler of water.  
Call a physician.

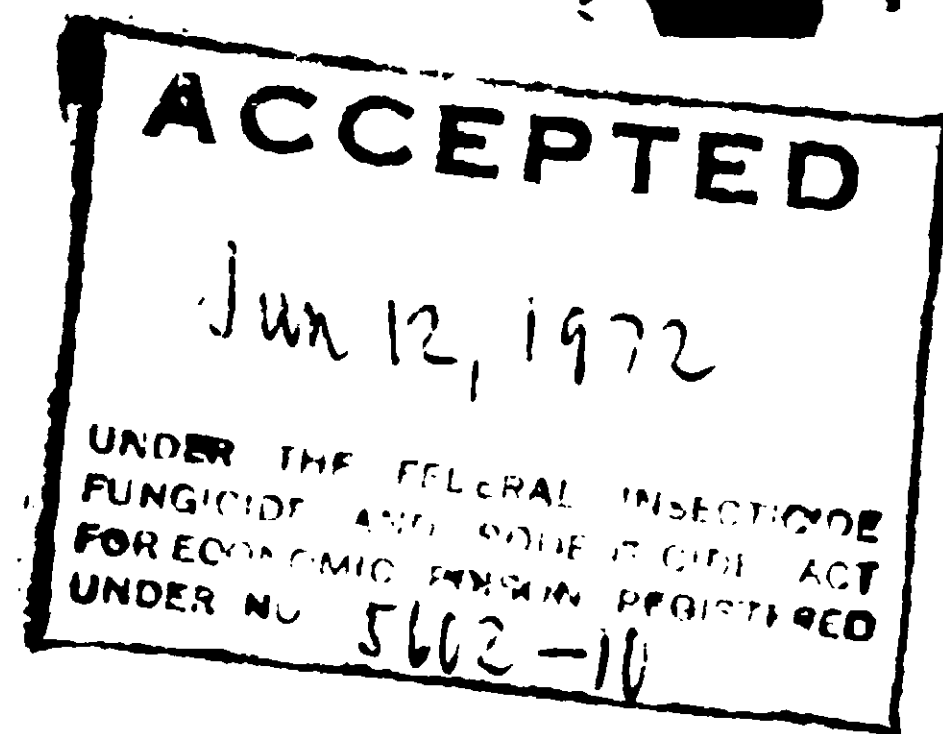


**NOT**

To prepare 1% Emulsion:  
1 Pint 75% Per 12 Gallons Water.



9233



**Hub States Corporation**

2070 NORTH ILLINOIS STREET

INDIANAPOLIS, INDIANA 46202

USDA Reg. No. 5602-10

**75% Emulsifiable Concentrate**

**CHLORDANE FOR TERMITE CONTROL**

**Active Ingredients**

Technical Chlordane\*\* . . . . . 75.0%

Petroleum Hydrocarbons . . . . . 20.0%

Inert Ingredients . . . . . 5.0%

Total . . . . . 100.0%

\*\*Equivalent to 45% Octachloro-4,7-methanotetrahydroindane and 30% Related Compounds.

NET CONTENTS **5** GALLONS

**CAUTION! Keep Out of Reach of Children!**  
See side panel for additional cautions.



**Hub States Corporation**

2020 NORTH ILLINOIS STREET  
INDIANAPOLIS, INDIANA 46202

USDA Reg. No. 5602-10

## 75% Emulsifiable Concentrate

### CHLORDANE FOR TERMITE CONTROL

#### Active Ingredients

Technical Chlordane\*\* . . . . . 75.0%

Petroleum Hydrocarbons . . . . . 20.0%

Inert Ingredients . . . . . 5.0%

Total . . . . . 100.0%

\*\*Equivalent to 45% Octachloro-4,7-methanotetrahydroindane  
and 30% Related Compounds.

NET CONTENTS **5** GALLONS

**CAUTION! Keep Out of Reach of Children!**  
See side panel for additional cautions.

#### DIRECTIONS:

Apply a 1% chlordane emulsion as follows:

##### 1-Slab-Type Construction

a-Apply 1 gallon per 10 sq. ft. as an overall treatment under the slab and under attached porches.

b-Apply 2 gallons per 5 lineal feet to critical areas under the slab, such as along the inside of foundation walls and around utility entrances and interior partition foundation walls..

c-Apply 2 gallons per 5 lineal feet along the outside of the foundation.

##### 2-Crawl-Space Houses

a-Apply 2 gallons per 5 lineal feet to critical areas under the house, such as along the inside of foundation walls, and around piers and utility entrances.

b-Apply 2 gallons per 5 lineal feet along the outside of foundation walls, including entrance platforms and porches where the foundation is more than 15-18 inches deep. If over 15 inches deep but not over 30 inches deep, apply 4 gallons per 5 lineal feet.

c-Apply 1 gallon per 10 square feet of soil surface as an over-all treatment where the area includes porches, entrance platforms, utility entrances, and concrete covering slab on fill of ground.

Minimum of 5 years control is obtained by the use of a chlordane emulsion in above application.

