

FORMULATED FOR INDUSTRIAL AND INSTITUTIONAL USE

STRILATE

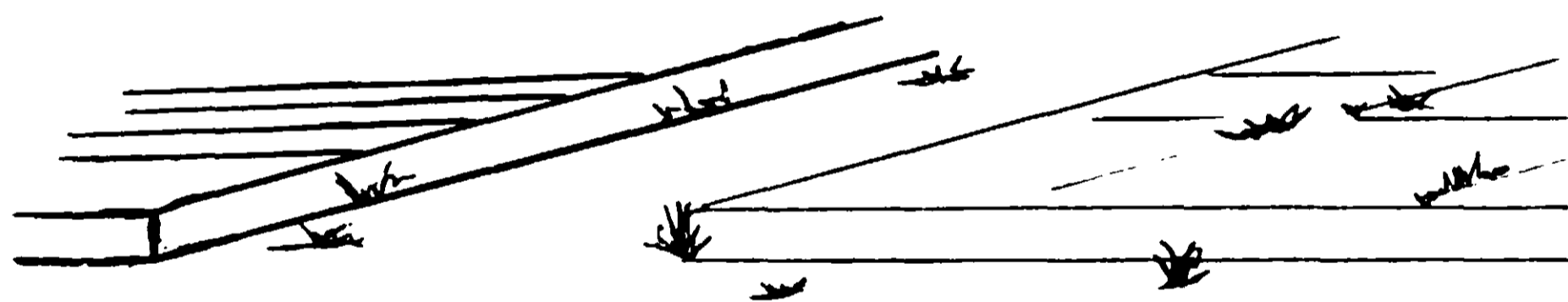
FOR USE IN AND AROUND ASPHALT
BARE GROUND WEED CONTROL

ACTIVE INGREDIENTS:

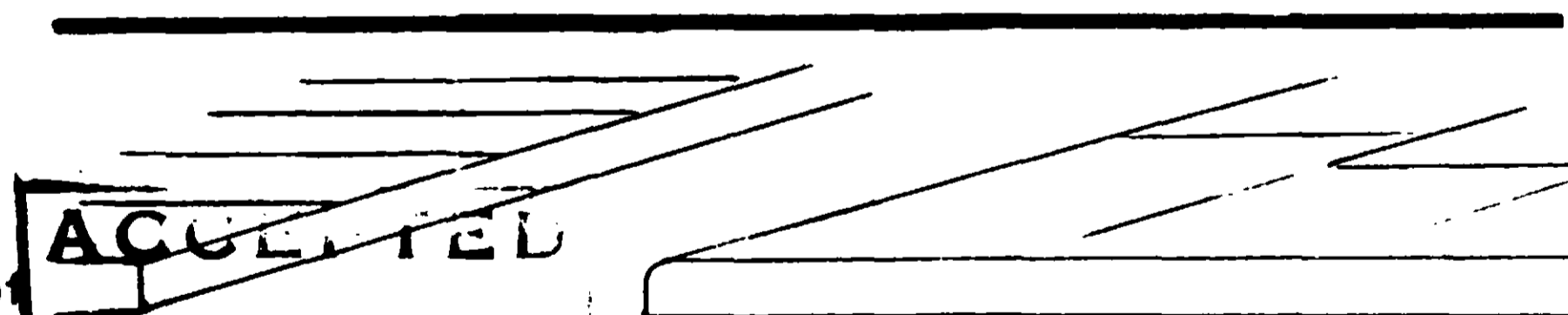
*Prometon (2,4-bis (isopropylamino)-6-methoxy-s-triazine)	1.5%
Pentachlorophenol	0.7%
2,3,4 6-Tetrachlorophenol	0.1%
Petroleum distillate	93.2%

INERT INGREDIENTS 4.5%

*Prometon® , trademark of CIBA-GEIGY Corporation



WITHOUT "STRILATE"



WITH "STRILATE"

ACCEPTED

12-10-74

5576-32

UNDER THE FEDERAL INSECTICIDE ACT

REGISTERED

Comments

REGAL

Supply & Chemical
Box 1955 El Paso, Texas

AROUND:

- GUARD RAILS
- AIRPORTS
- PIPELINES
- MACHINERY
- FUEL TANKS
- ROADWAYS
- STORAGE ACRES
- FENCES
- PUMPS
- MILITARY INSTALLATIONS
- RAILROADS
- HIGHWAY MEDIANS
- RECREATIONAL AREAS
- INDUSTRIAL SITES
- BUILDINGS
- DRAINAGE DITCH BANKS
- LUMBERYARDS

SITE

GENERAL INFORMATION:

THIS PRODUCT IS A SPECIALLY FORMULATED NON-SELECTIVE VEGETATION KILLER FOR CONTROLLING A WIDE RANGE OF ANNUAL AND PERENNIAL WEEDS AND GRASSES. APPLY UNDILUTED AS A SPRAY ON NON-CROPLAND AREAS WHERE STERILE BARE GROUND IS DESIRED. CONTROL WILL VARY WITH THE AMOUNT OF CHEMICAL APPLIED, SOIL TYPE, RAINFALL AND OTHER CONDITIONS. THIS PRODUCT IS NON-CORROSIVE TO METAL SURFACES. ESPECIALLY COMPOUNDED FOR INDUSTRIAL AND MUNICIPAL WEED CONTROL.

CAUTION:

KEEP OUT OF REACH OF CHILDREN
CONTAINS PETROLEUM DISTILLATES
HARMFUL OR FATAL IF SWALLOWED

AVOID CONTACT WITH EYES AND SKIN. IN CASE OF CONTACT WITH SKIN, WASH WITH SOAP AND WATER. IN CASE OF CONTACT WITH EYES, FLUSH FOR AT LEAST 15 MINUTES WITH WATER. CALL PHYSICIAN.

AVOID INHALATION OF SPRAY MIST.

AVOID CONTAMINATION OF FOOD AND FEED.

DO NOT CONTAMINATE WATER USED FOR IRRIGATION OR DOMESTIC PURPOSES.

DO NOT REUSE CONTAINER. DESTROY WHEN EMPTY.

DO NOT USE, POUR, SPILL OR STORE NEAR HEAT OR OPEN FLAME.

STORE AT TEMPERATURES ABOVE 32°

HARMFUL IF SWALLOWED.

This product is toxic to fish and wildlife. Keep out of lakes, streams, or ponds. Do not apply where runoff is likely to occur. Do not apply when weather conditions favor drift from areas treated. Do not contaminate water by cleaning of equipment, or disposal of waste.

Apply this product only as specified on this label.

Good industrial safety practices include the use of rubber gloves. Protective clothing and mask or eye shield when using this product or any other chemical.

ACCEPTED WITH COMMENTS