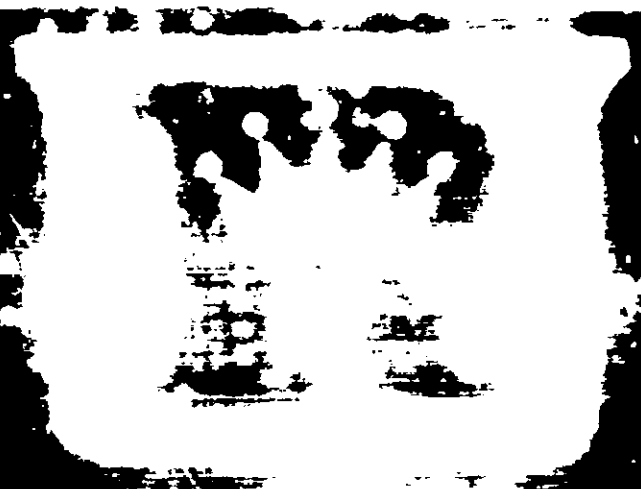


Engineering a better environment



through advanced chemical research

FOOD HANDLERS SPRAY IMPORTANT - USE AS DIRECTED
 For best results use a good, clean, rust-free sprayer which gives a fine mist, fog or spray.

DIRECTIONS:
HOUSEFLIES, MOSQUITOES, FRUITFLIES & GNATS: Spray throughout room, particularly toward ceiling. To insure fine mist, doors and windows may be opened after 10 minutes. Pick up and destroy fallen insects.

ROACHES, WATERBUGS AND SILVERFISH: Spray thoroughly into cracks and crevices, under and behind sinks, cupboards, drawers, woodwork, refrigerators, pipes, and drains where insects occur. Spray directly on as many insects as possible. Repeat application as necessary.

CLOTHES MOTHS AND CARPET BEETLES: Spray kills these insects, their eggs and larvae by contact. Clean and spray closet thoroughly to reach all hiding places. Clean and brush woolen articles holding sprayer two feet from the articles, spray so as to thoroughly moisten, paying particular attention to the seams and folds. Allow sprayed articles to dry completely before using. Repeat applications every 30 days unless articles are stored in mothtight containers previously cleaned and sprayed.

BEDBUGS: Take bed, dressers and other furniture apart and spray thoroughly slats, springs, and all cracks and crevices. Spray thoroughly entire mattress, especially seams and tufts, and allow to dry completely before using. Spray all cracks and hiding places in rooms including behind woodwork, loose wallpaper, picture frames and moulding. Repeat application as necessary.

ANTS AND FLEAS: Spray directly on as many ants as possible. Treat ant trails and areas around doorsills and window frames where insects may enter premises. Also treat openings around water pipes, heat ducts, baseboards where insects may enter room. Repeat as required. To kill fleas, spray thoroughly floors, rugs, lower walls, basement, sleeping quarters of animals and other infested areas. Repeat as necessary.

ENVIRONMENTAL CAUTIONS:

This product is toxic to fish and wildlife.
 Keep out of lakes, streams, or ponds.
 Do not apply when weather conditions favor drift from areas treated. Do not contaminate water by cleaning of equipment, or disposal of waste.
 Apply this product only as specified on this label.
 DO NOT USE, LEAK, SPILL OR STORE NEAR HEAT OR OPEN FLAME.

NET CONTENTS: 16 FL. OZ. (1 PINT)
 FMC CORPORATION, PHILADELPHIA, PA. 19104
 MADE IN U.S.A.

NOTICE TO THE PUBLIC

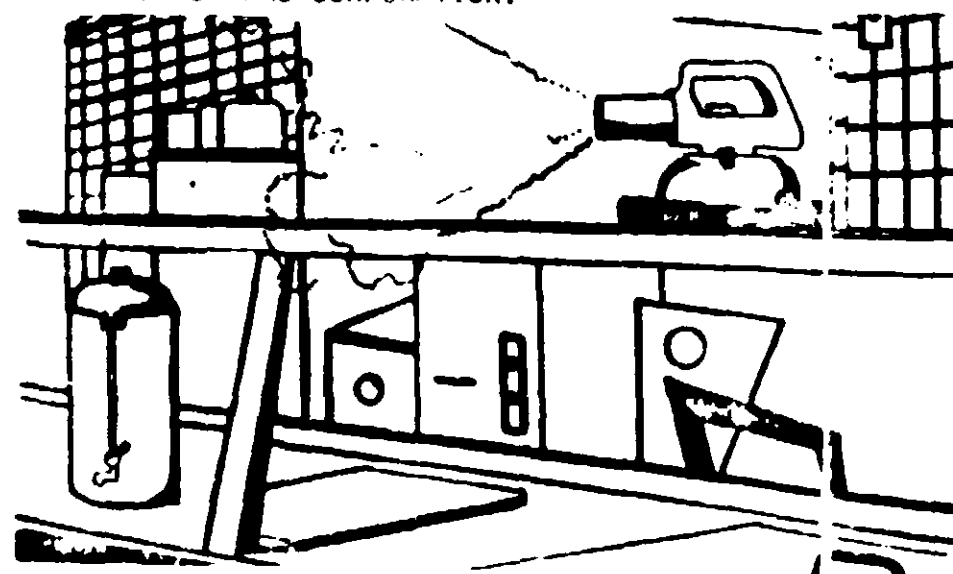
PYRETOCIDE

FOOD HANDLERS SPRAY INSECTICIDAL REODORANT

ACTIVE INGREDIENTS:

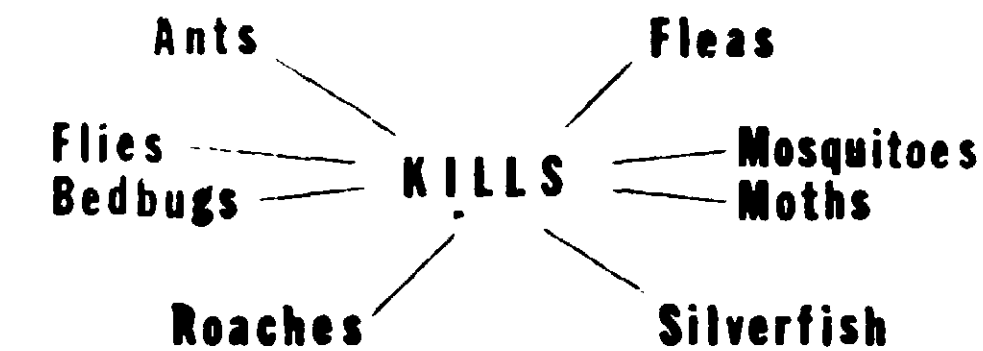
Beta-butoxy beta-cyano diethyl ether	3.64%
Pyrethrins	0.03%
*Technical piperonyl butoxide	0.15%
Petroleum distillate	95.62%
TOTAL ACTIVE INGREDIENTS	99.44%
INERT INGREDIENTS	0.56%
TOTAL INGREDIENTS	100.00%

*Equivalent to 0.12% (butylcarbityl) (6-propylpiperonyl) ether and 0.03% related compounds.
 LETHANE is a trademark Reg. U.S. Pat. Off. and in principal foreign countries by the Rohm and Haas Company, Philadelphia.
 PYRENONE-TM of FMC CORPORATION.



CAUTION
 KEEP OUT OF REACH OF CHILDREN

FOR HIGH KILL
 FLYING INSECTS
 MOSQUITOES, CLOTHES MOTHS, CARPET BEETLES, FLEAS AND BEDBUGS
 TEMPORARILY AVOID
 ON PORCH, TERRACE, PATIO
 SPRAY FREQUENTLY
 BOOKS, GROUND AND SUB
 BODY OF WATER IS PROHIBITED
 STREAMS, OR PONDS. DRAINAGE IS
 LIKELY TO OCCUR.



CAUTION: KEEP OUT OF REACH OF CHILDREN

Avoid inhalation and skin contact. In case of spillage on skin, wash immediately with soap and water. Avoid contamination of foodstuff and feed. Food should be removed or covered during treatment. All food processing surfaces should be covered during treatment or thoroughly cleaned before using. When using the product in these areas, apply only when the facility is not in operation. Harmful if swallowed. Do not use or store near heat or open flame. Do not reuse empty container. Destroy it by perforating or crushing. Bury or discard in safe place. Remove pets, birds and cover fish aquariums before spraying. When using in an enclosed area, do not remain in treated areas. Ventilate the area after treatment is completed.

INDUSTRIAL
 supply & chemical
 P. O. Box 1955, El Paso, Texas 79950

