

GRO-WELL®

1.98

PATIO FOGGER

SINCE 1855

SITE = VIII

**KILLS MOSQUITOES
FLIES and GNATS
UP TO 20 FEET AWAY**

**FAST
KNOCK-DOWN
WITH NEW
NEO-PYNAMIN®**

**AND ACTS AS A
REPELLENT
AGAINST THESE INSECTS**

**Also kills Ants,
Centipedes & Crickets**

NEO-PYNAMIN Reg. U. S. Pat. Off.
Sumitomo Chemical Co. Ltd.

**CAUTION: KEEP OUT OF REACH OF CHILDREN. SEE
BACK PANEL FOR ADDITIONAL CAUTIONS.**

DIRECTIONS FOR USE — SHAKE WELL BEFORE USING

GRO-WELL® PATIO FOGGER is intended for use in BACKYARDS, PATIOS and PICNIC AREAS, and when properly directed, will kill **FLIES, MOSQUITOES and GNATS up to 20 FEET AWAY**. This spray also acts as a **REPELLENT** to these insects

For best results, spray when air is calm, allowing a few minutes for product to take effect. If there is no wind, spray from center of area to be treated. If there is a wind, spray with your back to the wind from the outer edge of area to be treated. Point valve opening away from face.

To kill ANTS, CENTIPEDES and CRICKETS spray infested surface of patio or picnic area, hitting as many insects with spray as possible. Spray ant hills and trails for best control. Repeat as necessary.

CAUTION: HARMFUL IF SWALLOWED. KEEP OUT OF REACH OF CHILDREN. Avoid breathing of spray mist and skin contact. Do not spray toward face. Do not smoke while spraying. Wash thoroughly after using and before smoking or eating. Cover exposed food before spraying. Do not spray on food crops. Keep 4 to 6 feet away from ornamental plants while spraying.

WARNING: Contents under pressure. Never puncture or throw container into fire. Never set container on stove, radiator or near fire or flame or place where temperature will exceed 120°F, which may cause it to burst.

NOTE: Follow directions carefully, as use, storage and handling of this material is beyond the control of the seller, the buyer assumes all risks if directions given herewith are not strictly adhered to.

ACTIVE INGREDIENTS:

*Tetramethrin	0.200%
and related compounds	0.027%
**Technical Piperonyl Butoxide	1.000%
***Technical Methoxychlor	1.000%
Butoxypropylene glycol	1.000%
Petroleum Distillate	15.250%

INERT INGREDIENTS:

	81.523%
TOTAL	100.000%

*1 Cyclohexene 1, 2-dicarboximidomethyl 2, 2-dimethyl 3-(2-methylpropenyl) cyclopropanecarboxylate

**Equivalent to 0.8% of (butylcarbityl) (6-propylpiperonyl) ether and 0.2% of related compounds

***Equivalent to 0.9% 2, 2-bis (p-methoxyphenyl) 1, 1, 1-trichloroethane and 0.1% other isomers and reaction products

Sold By:

E. P. A. REG. NO. 5535-95

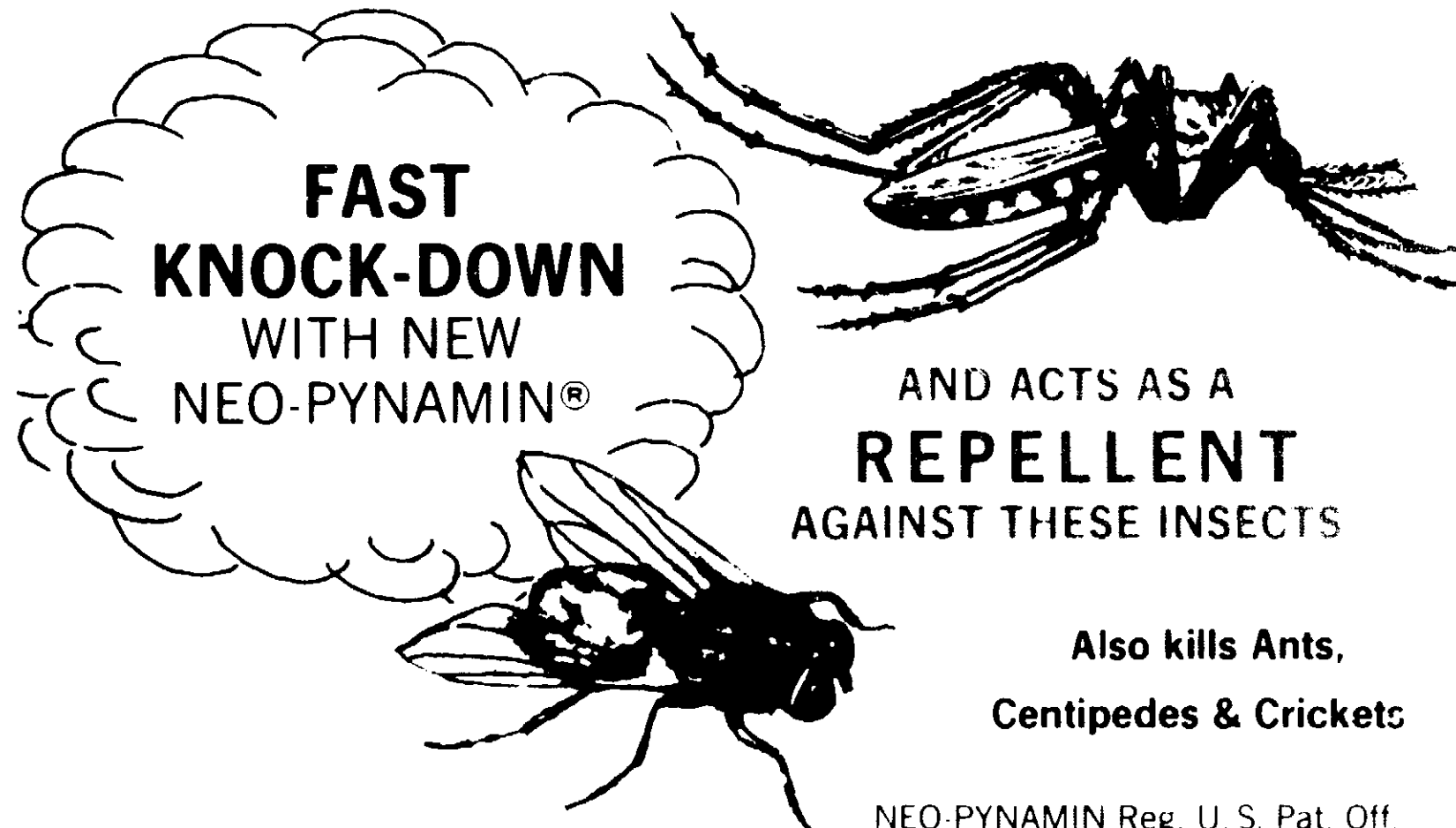
J. & L. ADIKES, INC., JAMAICA, NEW YORK 11423

5535-95

ACCEPTED

JAN 24 1973

UNDER THE FEDERAL INSECTICIDE
FUNGICIDE AND RODENTICIDE ACT



GRO-WELL®

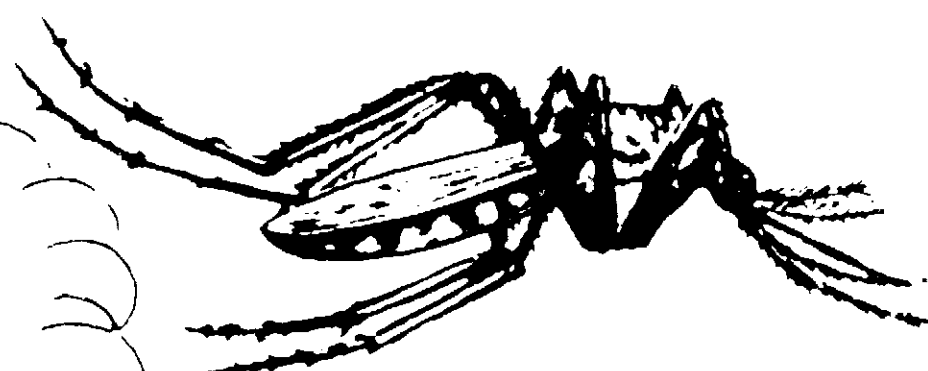
1.98

PATIO FOGGER

SINCE 1855

KILLS MOSQUITOES
FLIES and GNATS
UP TO 20 FEET AWAY

FAST
KNOCK-DOWN
WITH NEW
NEO-PYNAMIN®



Also kills Ants,
Centipedes & Crickets

NEO-PYNAMIN® is a registered trademark of the manufacturer.

DIRECTIONS FOR USE — SHAKE WELL BEFORE USING

GRO-WELL PATIO FOGGER kills MOSQUITOES, FLIES, MOSQUITOES and GNATS up to 20 FEET AWAY. It is also an excellent INSECT REPELLENT.

To kill MOSQUITOES, FLIES, MOSQUITOES and GNATS, spray the area to be treated with the fogger. The fogger will kill the insects up to 20 feet away from the fogger. To kill MOSQUITOES, FLIES, MOSQUITOES and GNATS, spray the area to be treated with the fogger. The fogger will kill the insects up to 20 feet away from the fogger.

To kill ANTS, CENTIPEDES and CRICKETS, spray the area to be treated with the fogger. The fogger will kill the insects up to 20 feet away from the fogger.

CAUTION: HARMFUL IF SWALLOWED. KEEP OUT OF REACH OF CHILDREN. Avoid contact with eyes, nose, mouth, and skin. Wash hands thoroughly after use. Do not use in enclosed areas. Do not use near food or drink. Do not use near children or pets. Do not use near electrical outlets. Do not use near heat sources. Do not use near open flames. Do not use near smoking materials. Do not use near candles. Do not use near incense. Do not use near incense burners. Do not use near incense cones. Do not use near incense sticks. Do not use near incense coils. Do not use near incense disks. Do not use near incense pellets. Do not use near incense powder. Do not use near incense granules. Do not use near incense chips. Do not use near incense shavings. Do not use near incense dust. Do not use near incense ash. Do not use near incense residue. Do not use near incense waste. Do not use near incense byproducts. Do not use near incense byproducts.

WARNING: Do not use in enclosed areas. Do not use near food or drink. Do not use near children or pets. Do not use near electrical outlets. Do not use near heat sources. Do not use near open flames. Do not use near smoking materials. Do not use near candles. Do not use near incense. Do not use near incense burners. Do not use near incense cones. Do not use near incense sticks. Do not use near incense coils. Do not use near incense disks. Do not use near incense pellets. Do not use near incense powder. Do not use near incense granules. Do not use near incense chips. Do not use near incense shavings. Do not use near incense dust. Do not use near incense ash. Do not use near incense residue. Do not use near incense waste. Do not use near incense byproducts. Do not use near incense byproducts.

NOTE: Do not use in enclosed areas. Do not use near food or drink. Do not use near children or pets. Do not use near electrical outlets. Do not use near heat sources. Do not use near open flames. Do not use near smoking materials. Do not use near candles. Do not use near incense. Do not use near incense burners. Do not use near incense cones. Do not use near incense sticks. Do not use near incense coils. Do not use near incense disks. Do not use near incense pellets. Do not use near incense powder. Do not use near incense granules. Do not use near incense chips. Do not use near incense shavings. Do not use near incense dust. Do not use near incense ash. Do not use near incense residue. Do not use near incense waste. Do not use near incense byproducts. Do not use near incense byproducts.

ACTIVE INGREDIENTS

NEO-PYNAMIN® (100%)
Other active ingredients: (100%)

INERT INGREDIENTS

Other inert ingredients: (100%)

Sold By: E P A REG NO 5535-95

CAUTION: KEEP OUT OF REACH OF CHILDREN. SEE BACK PANEL FOR ADDITIONAL PRECAUTIONS.

RECEIVED
MAY 1973