

[5535-79]

**HOUSE & GARDEN INSECT SPRAY**

Read entire label before using and follow directions carefully

**TO OPERATE:**

1. Remove protective cap
2. Press button to release spray
3. Hold can 1' to 2 feet from object being sprayed. Direct spray at insects.

**HOUSEHOLD INSECTS**

**FLYING INSECTS: (TERMITES, WASPS AND OTHER SMALL FLYING INSECTS SUCH AS FLIES, GNATS AND MOSQUITOES)**

**TERMITES:** Use directly on winged forms which are swarming. Will not kill subterranean or nesting termites.

**SMALL FLYING INSECTS:** It is suggested that you remove pets, birds and fish from room before closing up the infested area. Close doors and windows and direct spray to all parts of the room with sweeping circular motion and filling it with a mist. Keep room closed for at least 10 minutes after treatment. Do not remain in treated area. It is suggested to ventilate the area when treatment is completed. It is desirable to frequently sweep up and destroy the fallen insects at the close of the 10 minute period.

**CRAWLING INSECTS: (EARWIGS, CLOVER MITES, ROACHES, BED BUGS, ANTS, SILVERFISH, SPIDERS and FLEAS.)** Spray wherever insects might be hiding, such as under sinks, stoves, drain boards, in cracks, crevices, baseboards, refuse areas, storage areas or where insects might enter the premises such as door sills and window frames, especially ants paying particular attention to their trails. Repeated applications are required.

**FLEAS:** Repeated treatment is required, especially on floors, baseboards, floor coverings, and the sleeping quarters of animals. **DO NOT SPRAY THE ANIMAL WITH THIS MATERIAL.**

**BED BUGS:** To control these pests thorough and repeated spraying of the bed and mattress is required. The spray should also be directed into all cracks and hiding places about the bedroom, around baseboards, walls and floors.

**CLOTHES MOTHS AND CARPET BEETLES:** Woolens should be cleaned and brushed thoroughly before spraying. Spray garments thoroughly from distance of about 2 feet paying particular attention to folds and seams. Repeat monthly if articles are not stored in moth-tight containers.

**GARDEN INSECTS**

**FOR WINGED TERMITES, EARWIGS, CLOVER MITES, JAPANESE BEETLES, APHIDS, LEAF HOPPERS, EXPOSED THRIPS AND ADULT WHITE FLY**

**DO NOT USE ON VEGETABLES OR FRUITS, USE ONLY ON ORNAMENTAL FLOWERS AND SHRUBS** such as Roses, Asters, Azaleas, Carnations, Chrysanthemums, Deciduous Plants, Iris, African Violets, Camellias, Grape Ivy, English Ivy, Marigolds, Euonymus, Dahlias, Crassula, Petunias, Delphiniums, Rhododendrons, Snapdragons, and Evergreens. **DO NOT USE ON CYCLAMEN, LANTANA or MAIDEN-HAIR FERN.**

Spray with one second bursts in a sweeping motion. Hold can 1' feet from plants being sprayed. Direct spray on insects. Spray all sides covering plant foliage lightly. Never wet plants heavily. Use particular caution on new growth and young plants. Avoid spraying in direct sunlight during the hottest daylight hours. Repeat application whenever necessary.

**CAUTION: KEEP OUT OF REACH OF CHILDREN.** Do not spray on food, humans or animals. Avoid breathing mist or contact with skin, eyes and clothing. Wash with soap and water after using, and before eating or smoking. Harmful if swallowed.

Contents of can under pressure. Do not puncture or incinerate. Keep away from direct sunlight, stoves, hot water, radiators, sparks, open flame and other sources of heat. Do not smoke while spraying. Store at room temperature which is not to exceed 120 F.

NYFD Permit No. 405847

**NOTE:** Follow directions carefully as use, storage and handling of this material is beyond control of the seller. The buyer assumes all risks if directions given herewith are not strictly adhered to.

**ACTIVE INGREDIENTS:**

Pyrethrins	0.15%
N-Octyl Bicycloheptene Dicarboximide	0.30%
Technical Piperonyl Butoxide	0.54%
Petroleum Distillates	9.01%

**INERT INGREDIENTS**

90.00%

**TOTAL**

100.00%

\*Equivalent to 0.43% (butylcarbityl) (6-propylpiperonyl) ether and 0.11% other related compounds

Sold by

J. & L. ADIKES, INC., JAMAICA, N. Y. 11423

EPA Reg. No. 5535-79

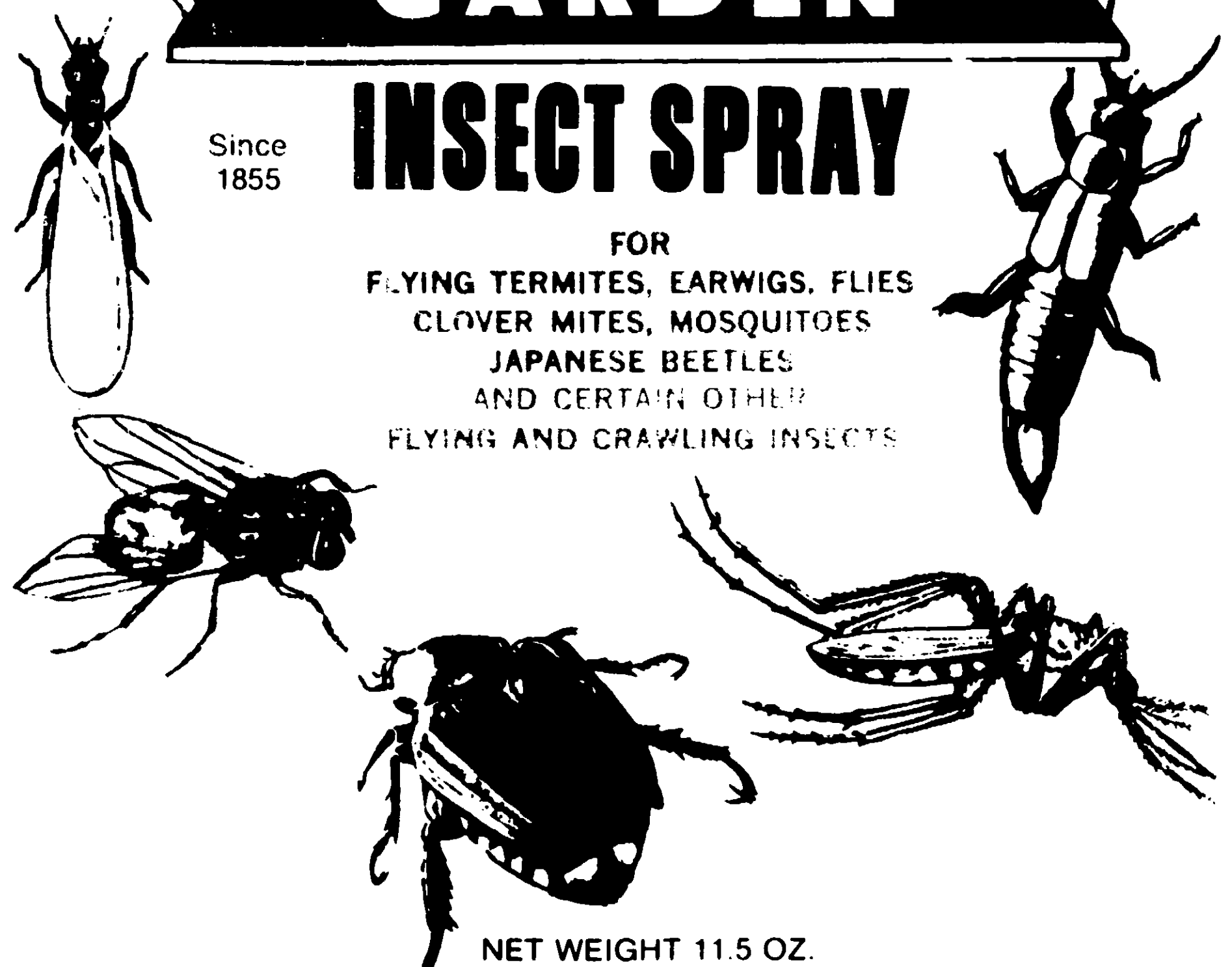
**GROWELL.** 1.59

**HOUSE AND GARDEN**

**INSECT SPRAY**

Since 1855

FOR  
 FLYING TERMITES, EARWIGS, FLIES  
 CLOVER MITES, MOSQUITOES  
 JAPANESE BEETLES  
 AND CERTAIN OTHER  
 FLYING AND CRAWLING INSECTS



NET WEIGHT 11.5 OZ.

**CAUTION: KEEP OUT OF REACH OF CHILDREN  
 SEE BACK PANEL FOR ADDITIONAL CAUTIONS**