

**GRO-WELL FERBAM** is a fungicide which will control many diseases on a large variety of plants including Trees, Shrubs, Flowers, Fruits and Vegetables. See list below for some specific diseases controlled. Use 2 level tablespoonfuls per gallon of water and apply with a GRO-WELL SHRUB SPRAYER following mixing directions on sprayer. Cover plants thoroughly with spray being sure to hit underside of leaves. Use FERBAM before diseases are apparent and spray every 7 to 14 days as long as there is a disease problem.

**TREES, SHRUBS AND FLOWERS:** Black spot on Roses; Leaf spot on Asters, Begonias, Carnations, Cyclamen, Gardenias, Geraniums, Hydrangea, Ivy, Laurel and Snapdragons; Botrytis on Cyclamen and Tulips; Rust on Carnations, Chrysanthemums, Junipers, Roses and Snapdragons; Leaf Scorch on Azaleas; Petal Blight on Camellias (apply also to the soil and litter around plants while they are in bloom); Alternaria Blight on Carnations; Septoria Blight on Carnations and Chrysanthemums; Anthracnose on Sycamore (Make 3 applications—The first at Budbreak, 2nd and 3rd at 10 days intervals).

**FRUIT:** APPLES (\*): Apple Blotch, Bitter Rot, Black Rot, Blossom End Rot, Brooks Spot, Cedar Apple Rust, Fly Speck, Sooty Blotch; APRICOTS (\*\*): Blossom Blight, Brown Rot, Green Rot, Shot Hole Fungus; BLUE BERRIES (\*\*\*) Botrytis Blight; CHERRIES: Brown Rot, Leaf spot; GRAPES (\*\*): Black Rot; PEACHES (\*\*): Brown Rot Blossom Blight, Leaf Curl, Scab, Shot Hole Fungus; PEARS: Fruit Spot, Leaf Blight, Scab, Sooty Blotch; PLUMS & PRUNES: Brown Rot; BLACK BERRIES AND RASPBERRIES (\*\*): Anthracnose, Rust, Spur Blight; NOTE: (\*) Do not use on certain tender varieties such as Golden Delicious as it may contribute to fruit russetting; (\*\*) Do not apply within 21 days before picking; (\*\*\*) Do not apply less than 40 days before picking. Unless otherwise noted do not spray later than 7 days before picking fruit.

**VEGETABLES:** Anthracnose on SNAP or STRINGBEANS (Do not make application within 4 days of picking and do not feed treated plants to livestock); Downy Mildew in beds of CABBAGE and LETTUCE; Leaf Spot on CELERY (Remove residue by stripping, trimming and washing).

**CAUTION:** Keep out of reach of children. May cause irritation of eyes, nose, throat and skin. Avoid breathing dust or spray mist. Avoid contact with skin, eyes and clothing. In case of contact, flush with plenty of water. For eyes contact doctor. Keep away from fire or sparks. Store away from domestic animals and foodstuffs. Do not reuse container. Destroy when empty.

This product is toxic to fish. Keep out of lakes, streams or ponds. Do not apply when weather conditions favor drift from areas treated. Do not apply where runoff is likely to occur. Do not contaminate water by cleaning of equipment or disposal of wastes. Apply this product only as specified on this label.

**NOTE:** Follow directions carefully, as use, storage and handling of this material is beyond the control of the seller, the buyer assumes all risks if directions given herewith are not strictly adhered to.

**ACTIVE INGREDIENTS:**

FERBAM (Ferric Dimethyl Dithiocarbamate)

**INERT INGREDIENTS**

76.00%  
24.00%

SOLD BY

J. & L. ADIKES, INC., JAMAICA, NEW YORK

EPA Reg No. 5535-40

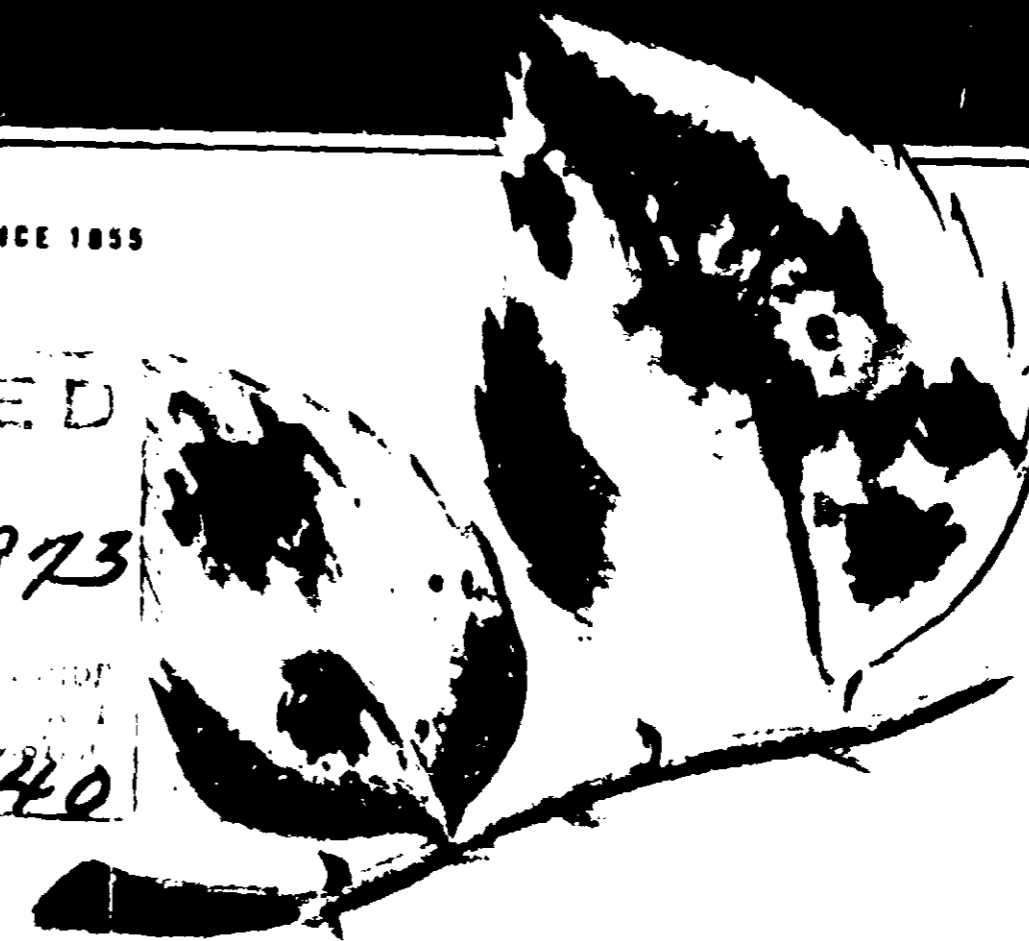
**GRO-WELL.**

**1.39**

**FERBAM**

SINCE 1855

ACCEPTED  
Feb. 13, 1973  
5535-40



MAKE UP TO 25 GALLONS OF SPRAY

**CONTROLS BLACK SPOT, ANTHRACNOSE  
BLIGHTS, RUST & CERTAIN OTHER DISEASES**

NET WT: 8 oz.

**CAUTION: KEEP OUT OF REACH OF CHILDREN  
SEE BACK PANEL FOR ADDITIONAL CAUTIONS**

**GRO-WELL FERBAM** is a fungicide which will control many diseases on a large variety of plants including Trees, Shrubs, Flowers, Fruits and Vegetables. See list below for some specific diseases controlled. Use 2 level tablespoonfuls per gallon of water and apply with a GRO-WELL SHRUB SPRAYER following mixing directions on sprayer. Cover plants thoroughly with spray being sure to hit underside of leaves. Use FERBAM before diseases are apparent and spray every 7 to 14 days as long as there is a disease problem.

**TREES, SHRUBS AND FLOWERS:** Black spot on Roses; Leaf spot on Asters, Begonias, Carnations, Cyclamen, Gardenias, Geraniums, Hydrangea, Ivy, Laurel and Snapdragons; Botrytis on Cyclamen and Tulips; Rust on Carnations, Chrysanthemums, Junipers, Roses and Snapdragons; Leaf Scorch on Azaleas; Petal Blight on Carnations (apply also to the soil and other ground plants while they are in bloom); Alternaria Blight on Carnations; Septoria Blight on Carnations and Chrysanthemums; Anthracnose on Sycamore. Make 3 applications—The first at Budbreak, 2nd and 3rd at 10 day intervals.

**FRUIT:** APPLES (\*): Apple Blotch, Bitter Rot, Black Rot, Blossom End Rot, Brooks Spot, Cedar Apple Rust, Fly Speck, Sooty Blotch; APRICOTS (\*\*): Blossom Blight, Brown Rot, Green Rot, Shot Hole Fungus; BLUE BERRIES (\*\*\*) Botrytis Blight; CHERRIES: Brown Rot, Leaf spot; GRAPES (\*\*\*) Black Rot; PEACHES (\*): Brown Rot Blossom Blight, Leaf Curl, Scab, Shot Hole Fungus; PEARS: Fruit Spot, Leaf Blight, Scab, Sooty Blotch; PLUMS & PRUNES: Brown Rot; BLACK BERRIES AND RASPBERRIES (\*\*\*) Anthracnose, Rust, Spur Blight; NOTE: (\*) Do not use on certain tender varieties such as Golden Delicious as it may contribute to fruit russetting; (\*\*) Do not apply within 21 days before picking; (\*\*\*) Do not apply less than 40 days before picking. Unless otherwise noted do not spray later than 7 days before picking fruit.

**VEGETABLES:** Anthracnose on SNAP or STRINGBEANS (Do not make application within 4 days of picking and do not feed treated plant to livestock); Downy Mildew in beds of CABBAGE and LETTUCE; Leaf Spot on CELERY (Remove residue by stripping, trimming and washing).

**CAUTION:** Keep out of reach of children. May cause irritation of eyes, nose, throat and skin. Avoid breathing dust or spray mist. Avoid contact with skin, eyes and clothing. In case of contact, flush with plenty of water. For eye contact, consult doctor. Keep away from fire or spark. Store away from food, feed and fuel. Do not reuse container. Destroy when empty.

This product is toxic to fish. Keep out of lakes, streams or ponds. Do not apply when weather conditions favor drift from areas treated. Do not apply where runoff is likely to occur. Do not contaminate water by cleaning of equipment or disposal of wastes. Apply this product only as specified on this label.

**NOTE:** Follow directions carefully, as use, storage and handling of this material is beyond the control of the seller, the buyer assumes all risks if directions given herewith are not strictly adhered to.

**ACTIVE INGREDIENTS:**

FERBAM (Ferric Dimethyl Dithiocarbamate)

75.00%

**INERT INGREDIENTS**

24.00%

SOLD BY

EPA Reg No. 5535-40

J. & L. ADIKES, INC., JAMAICA, NEW YORK

**GRO-WELL**

**1.39**

**FERBAM**

SINCE 1855

*Feb. 13, 1973*

*535-40*



**CONTROLS BLACK SPOT, ANTHRACNOSE  
BLIGHTS, RUST & CERTAIN OTHER DISEASES**

NET WT: 8 oz.

**CAUTION: KEEP OUT OF REACH OF CHILDREN**

FOR FURTHER INFORMATION, SEE LABEL