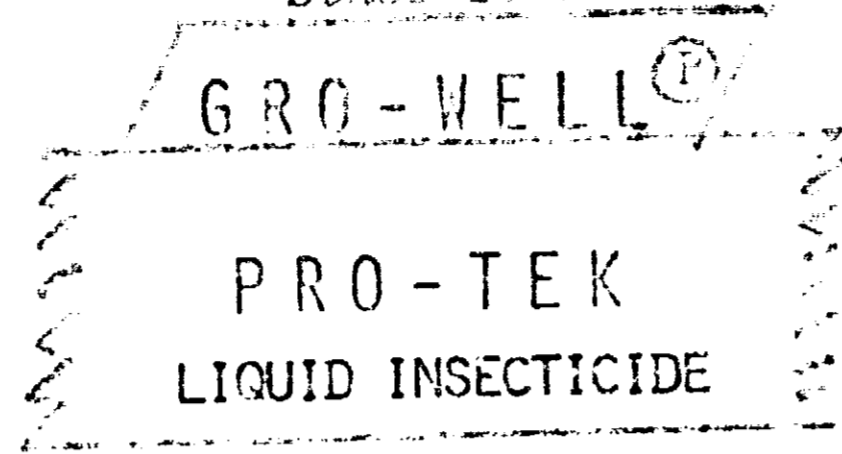


FRONT PANEL

ACCEPTED

5535-271

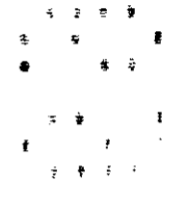
Since 1865



A CONCENTRATED INSECTICIDE FOR USE ON ROSES,
FLOWERS, SHRUBS, EVERGREENS, FRUIT TREES,
VEGETABLES AND AS A LAWN SPRAY.

MAKES UP TO 16 GALLONS OF SPRAY

CAUTION: KEEP OUT OF REACH OF CHILDREN
SEE BACK PANEL FOR ADDITIONAL CAUTIONS



REAR PANEL

GRO-WELL PRO-TEK LIQUID INSECTICIDE will control the insects listed below which attack ROSES, FLOWERS, SHRUBS, TREES, EVERGREENS, FRUIT TREES, VEGETABLES and LAWNS. A sprayer which attaches to a hose, such as the GRO-WELL SHRUB & TREE SPRAYER may be used. Read entire label. Use strictly in accordance with label cautions, warnings and directions. Do not store diluted spray. Make a new dilution for each use. Spray thoroughly, wetting all leaf surfaces, including the underside, before insects become numerous. Spray at weekly intervals as needed.

DOSAGE LISTED IS TO BE MIXED WITH ONE GALLON WATER

ROSES - FLOWERS	INSECTS	DOSAGE	FRUIT TREES	INSECTS	DOSAGE
Asters, Carnations, Dahlias, Gladiolus, Mums, Roses, Snap Dragons	Aphids; Flea & Japanese Beetles; Leaf Hopper; Rose Chafer; Tarnished Plant Bug; Whitefly.	3 tsps	Apple, Peach, Pear and Plum Do not apply within 21 days of harvest.	Aphids; Leaf Hopper; European & Red Spider Mites; Thrips. Tent Caterpillars; Scales(Crawlers)	4 tsps
<i>DO NOT USE ON PETUNIAS, BOSTON MAIDEN HAIR, PTERIS FERN & CRASSULA</i>					
EVERGREENS - SHRUBS	INSECTS	DOSAGE	VEGETABLES	INSECTS	DOSAGE
Andromedas, Azalea, Arborvitae, Boxwood, Euonymus, Hydrangea, Juniper, Lilac, Rhododendron, Taxus	Aphids; Lace & Mealy Bugs; Japanese Beetle; Spider Mites.	3 tsps	Beans, Eggplant, Peppers, Tomatoes. Do not apply within 7 days of harvest.	Aphids; Bean Aphid; Flea & Mexican Bean Beetles; Lace Bugs; Hornworm; Spider Mites.	4 tsps
	Boxwood Leaf Miner; Azalea, Euonymus & Scurfy Scales; Bagworm	4 tsps			
SHADE TREES	INSECTS	DOSAGE	LAWNS	INSECTS	DOSAGE
Birch, Elm, Holly, Magnolia, Maple, Oak, Pine, Sycamore Do not spray Jap Red Maple as foliage may be injured.	Aphids; Birch, Holly & Elm Leaf Miners; Oak Kermes; Elm Leaf Beetle; Magnolia & Pine Needle Scales; Tent Caterpillar.	4 tsps	Water lawn well to wash in insecticide. Use 1 Gal. of diluted spray for 50 sq.ft. Spray lower house and foundation and 10 ft. from house.	Japanese Beetles; Ticks	4 tsps
	Elm Bark Beetle-Dormant application only	12 tsps		Flies; Gnats and Mosquitoes	6 tsps
					Clover Mites

CAUTION: Keep out of reach of children and domestic animals and keep off treated area till spray dries. Harmful if swallowed. Do not inhale spray mist. May be absorbed through skin. Avoid skin contact. If contacted wash immediately with soap and water. For eyes (flush profusely for 15 minutes with water) and internal (induce vomiting), contact doctor. Do not use on pets or humans. Do not apply or allow to drift into areas occupied by unprotected persons or domestic animals. Wash well after using and before smoking or eating. Do not use on forage crops fed to dairy animals or to animals to be slaughtered or on the animals themselves or their barns.

This product is toxic to fish. Do not spray near ornamental fish ponds or near sources of water used for irrigation or domestic purposes. Do not apply where runoff is likely to occur.

NOTE TO PHYSICIAN. Malathion, upon repeated, prolonged or careless use, may cause chlorinesterase inhibition. Atropine

ACCEPTED

Sep 15-1969

5535-27

NOTE: Follow directions carefully. As use, storage and handling of this material is beyond the control of the seller, the buyer assumes all risks if directions given herewith are not strictly adhered to.

ACTIVE INGREDIENTS:

Malathion*	15.0%
Methoxychlor Technical**	7.5%
1,1-Bis(chlorophenyl)-2,2,2-Trichloroethanol***	4.5%
Xylene	68.0%

INERT INGREDIENTS: 5.0%

- * 0,0-Dimethyl Dithiophosphate of Diethyl Mercaptosuccinate.
- ** 7.5% Methoxychlor, Technical is equivalent to 6.6% 2,2-Bis (p-methoxyphenyl)-1,1,1-Trichloroethane and 0.9% other isomers and reaction products.
- *** Kelthane (Reg. T.M. - Rohm & Haas)

SOLD BY: J. & L. ADIKES, INC. NET CONTENTS 8 Ounces U.S.D.A. Reg. No. 5535-27 JAMAICA, NY 11423

STATEMENT OF INERT INGREDIENTS

Triton X151 (Rohm & Haas)..... 5.00%