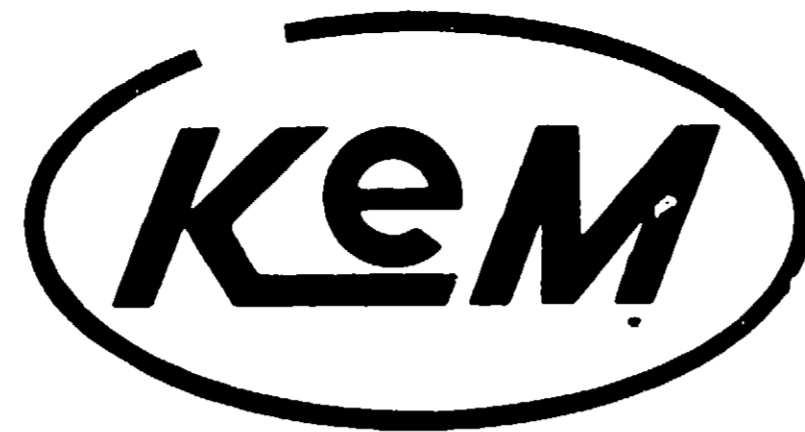


[5197-49]

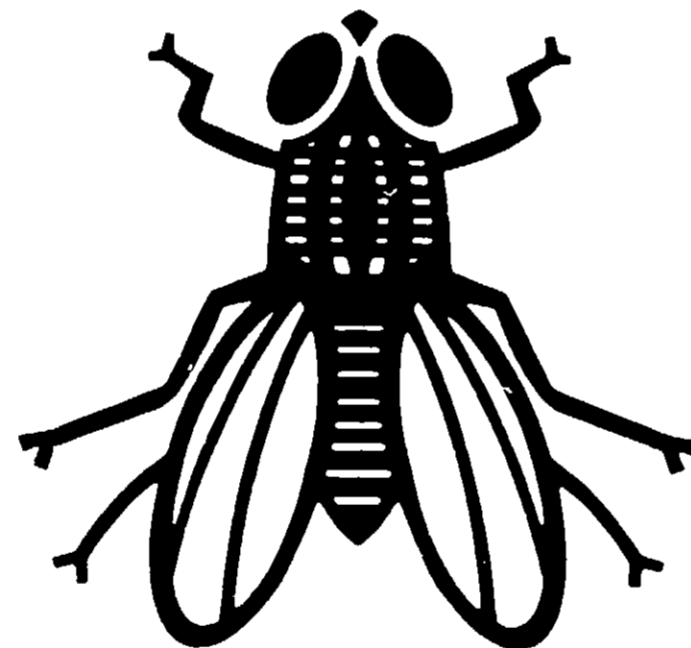


KEMSECT

KILLS HOUSEFLIES, GNATS, ROACHES, EARWIGS, ANTS, MOSQUITOES, WASPS, SPIDERS, CENTIPEDES, AND BITING FLIES.

Heavy Duty Industrial Formula

EPA Reg. 5197-49-AA
EPA Est. 10807-GA-1



NET CONTENTS 17 oz. (1lb. 1oz.)

CAUTION:

KEEP OUT OF REACH OF CHILDREN
See Side Panel for details

KEM MANUFACTURING CORPORATION

KEM INTERNATIONAL BUILDING, TUCKER, GEORGIA 30084 U.S.A.

ATLANTA EAST BRUNSWICK, N.J. SAN FRANCISCO

International Plants: Canada, Costa Rica, Holland, Jamaica, Puerto Rico

ACTIVE INGREDIENTS:

*† (benzyl-3-furyl) methyl 2,2 dimethyl 3 (2-methylpropenyl) cyclopropanecarboxylate	0.200 w/w
Related compounds	0.028
d trans Allethrin (allyl homolog of Cinerin 1)	0.150
Related compounds	0.012
Aromatic petroleum hydrocarbons	0.272
INERT INGREDIENTS	99.338

*Cis/trans isomers ratio: Max. 30% (+) cis and min. 70% (+) trans. †U.S. Patent No. 3,465,007.

DIRECTIONS FOR USE: Shake well before each use. Remove protective cap. Aim spray opening away from person. Push button to spray.

CONTROL HOUSEHOLD PESTS:

For Houseflies, Mosquitoes, and Gnats: Close all doors and windows. Point nozzle upward, direct spray mist to all parts of the room, especially windows and other light sources which attract these insects. Fill the room with mist, then leave the treated area. Keep the room closed for at least 15 minutes. Ventilate the room when treatment is completed.

For Crawling Insects: Roaches, earwigs, grain mites, sowbugs, spiders and centipedes: Spray thoroughly into hiding places such as cracks, crevices, moist areas, openings around pipes and sinks, under refrigerators, baseboards, and storage areas. Spray directly on insects where possible.

Ants: Spray trails, nests and points of entry. Spray on ants where possible. Repeat as necessary.

Wasps: Apply in late evening when insects are at rest. Spray liberally into hiding and breeding places. Contact as many insects as possible. Repeat if necessary.

OUTDOORS TO REDUCE ANNOYANCE FROM FLYING INSECTS: Reduce mosquitoes, gnats (midges), houseflies, biting flies, and flying moths by spraying their resting areas. Follow precautions listed above. Hold container 18 to 24 inches from shrubs, bushes, and grassy areas. Spray these areas with a slow sweeping motion at the rate of 1 to 3 seconds per cubic yard of space while moving away from the treated areas. To reduce annoyance from these flying insects, treat open porches and patios in a similar manner. Spray only when the air is still. Allow spray to dissipate before occupying the treated area. Repeat as necessary.

CAUTION

KEEP OUT OF REACH OF CHILDREN

Harmful if swallowed. Avoid contamination of feed and foodstuffs. Do not use on edible crops. In food handling or processing areas, all surfaces must be covered during treatment or thoroughly cleaned afterward. When using the product in these areas, apply only when plant is not in operation.

Remove pets, birds and cover fish aquariums before spraying.

WARNING: Contents under pressure. Do not puncture. Do not use or store near heat or open flame. Exposure to temperatures above 130° F. may cause bursting. Never throw container into fire or incinerator.

FOR INDUSTRIAL USE ONLY
NOT FOR RESALE