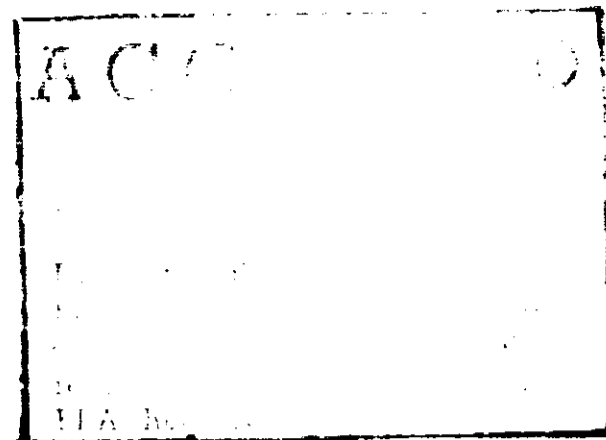


Printed in U.S.A.



RESIDUAL SPRAY - STAINLESS
KILLS RESISTANT ROACHES

**RESIDUAL SPRAY - STAINLESS
KILLS RESISTANT ROACHES**

Recommended for the control of roaches, ants, and other insect pests, resistant and non-resistant in hospitals, institutions, supermarkets, bakeries, warehouses, as a spot treatment.

ACTIVE INGREDIENTS:

Pyrethrins	05%
*Piperonyl toxide, technical	10%
N-octyl bicyclo-pentane dicarboximide	17%
**2-(1-methyl-ethoxy)-phenyl-methyl-carbamate	50%
Petroleum distillate	87.50%
INERT INGREDIENTS:	11.63%

*Consists of C₁₀-Bicyclo-aryloxy-ethyl-propyl-propyl-ether and 10% related compounds.
 Baygon, Reg. TM of Farbentfabriken Bayer A.G., Chemagro Corp. licensee.
 **U. S. Patent No. 3,111,539.

HEAVY DUTY INSTITUTIONAL CONCENTRATE

CAUTION

KEEP OUT OF REACH OF CHILDREN
FLAMMABLE
See Side Panel for Additional Cautions.

KEM MANUFACTURING CORPORATION

KEM INTERNATIONAL BUILDING, TOLSON, GEORGIA 31204 U.S.A.
ATLANTA - EAST BRUNSWICK, N.J. - SAN FRANCISCO
International: Paris, Canada, Costa Rica, Ireland, Jamaica, Puerto Rico

DIRECTIONS

Apply to cracks and crevices in walls, floors, baseboards, door frames, window frames, and other areas where insects hide or through which they may enter.

CARPENTER BEETLES - Apply to cracks and crevices in walls, floors, baseboards, door frames, window frames, and other areas where insects hide or through which they may enter.

FLIES, MOSQUITOES, WASPS AND FLYING MOTHS OUT-DOORS - Apply to cracks and crevices in walls, floors, baseboards, door frames, window frames, and other areas where insects hide or through which they may enter.

FLEAS, CHIGGERS, ANTS AND BROWN DOG TICKS OUT-DOORS - Apply to cracks and crevices in walls, floors, baseboards, door frames, window frames, and other areas where insects hide or through which they may enter.

Applications of this product in the home should be limited to spot treatments only.

Avoid excessive wetting of plastic, rubber and asphalt surfaces such as tires and floor coverings.

FOOD HANDLING ESTABLISHMENTS - Places other than private residences in which exposed food is held, processed, prepared or served. FOOD AREAS-APPLICATION LIMITED TO CRACK AND CREVICE TREATMENT ONLY. Includes areas for receiving, storage, packing (canning, bottling, wrapping, boxing) preparing, edible waste storage and enclosed processing systems (mills, dairies, edible oils, syrups). Serving areas (when food is exposed and facility is in operation would be considered a food area). Apply in small amounts directly into cracks and crevices using equipment capable of delivering a pin stream of insecticide in points between different elements of construction, between equipment and floors, openings leading to voids and hollow spaces in walls, equipment legs and bases where ants, cockroaches, silverfish or waterbugs hide. Care should be taken to avoid depositing the product onto exposed surfaces or introducing the material into the air. Avoid contamination of food or food processing surfaces.

APPLICATIONS OF THIS PRODUCT IN THE FOOD AREAS OF FOOD HANDLING ESTABLISHMENTS, OTHER THAN AS A CRACK AND CREVICE TREATMENT ARE NOT PERMITTED.

NON-FOOD AREAS - Includes garbage rooms, lavatories, floor drains (to sewers) entries and vestibules, offices, locker rooms, machine rooms, boiler rooms, garages, mop closets and storage (after canning or bottling). Apply to baseboard areas, around water pipes, surfaces behind and beneath sinks, lockers, tables, pallets and similar areas where insects hide or through which they may enter.

CAUTION

KEEP OUT OF REACH OF CHILDREN

