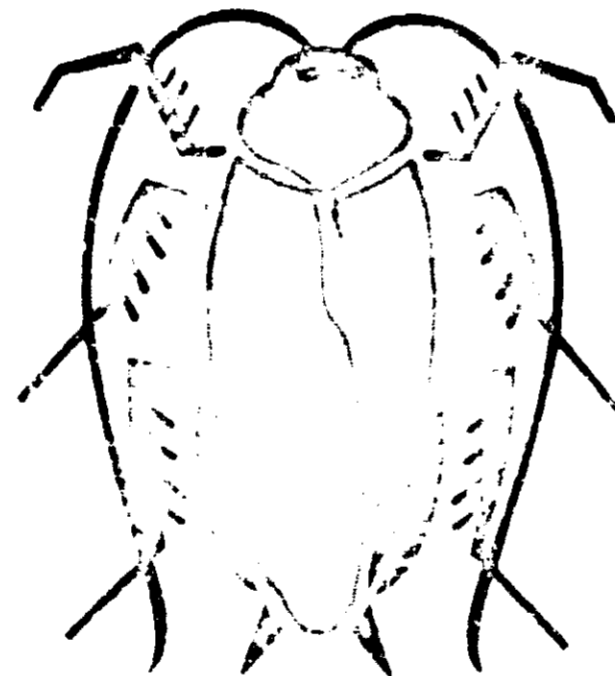




KEM KILL-B with BAYCON[®]

Heavy Duty Institutional Formula



NET CONTENTS: 14 oz.

CAUTION - FLAMMABLE
KEEP OUT OF REACH OF CHILDREN
CONTENTS UNDER PRESSURE
See side panels for additional cautions.

KEM MANUFACTURING CORPORATION

KEM INTERNATIONAL BUILDINGS, TUCKER, GEORGIA 30084 U.S.A.

ATLANTA / EAST BRUNSWICK, N.J. / SAN FRANCISCO

International Plants: Canada / Costa Rica / Holland / Jamaica / Puerto Rico

GENERAL: Spray surfaces to wetting. Point spray away from people, plants and pets.

Avoid excessive wetting of plastic, rubber and asphalt surfaces such as stair treads and ceilings.

FOOD HANDLING ESTABLISHMENTS -- Places other than private residences in which exposed food is held, processed, prepared or served. **APPLICATIONS WITHIN FOOD AREAS OF FOOD HANDLING ESTABLISHMENTS LIMITED TO CRACK AND CREVICE TREATMENT ONLY.** Insert injection tube and apply a small amount of material directly into cracks and crevices such as expansion joints between different elements of construction or between equipment bases and the floor, wall voids or hollow equipment legs where ants, cockroaches, silverfish or waterbugs hide. Care should be taken to avoid depositing the product onto exposed surfaces or introducing the material into the air. Avoid contamination of food or food processing surfaces.

APPLICATIONS OF THIS PRODUCT IN THE FOOD AREAS OF FOOD HANDLING ESTABLISHMENTS, OTHER THAN AS A CRACK AND CREVICE TREATMENT, ARE NOT PERMITTED.

NON-FOOD AREAS -- Includes garbage rooms, lavatories, floor drains, to sewer, entries and vestibules, offices, locker rooms, machine rooms, boiler rooms, garages, mop closets and storage (after canning or bottling). Apply to baseboard areas, around water pipes, surfaces behind and beneath sinks, lockers, tables, pallets and similar areas where insects hide or through which they may enter. Repeat as needed. Do not spray foodstuffs or house plants. For ants, spray trails and places where ants enter premises. Do not allow children to contact treated surfaces until surfaces are completely dry. Do not use in conduits, motor housings or electrical switch gear.

ACTIVE INGREDIENTS

Pyrethrins	05%
*Piperonyl butoxide, technical	10%
N-octyl bicycloheptane dicarboximide	17%
**2,1-Methylethoxyphenol methylcarbamate	50%
Petroleum distillate	59.50%

INERT INGREDIENTS:

*Consists of .00% (butylcarbityl 6-propylpiperonyl) ether and .02% related compounds.
Baycon[®] Reg. TM of Farbenfabriken Bayer A.G., Chemagro Corporation Licensee.

**Reg. U.S. Pat. & TM. 3,111,539

CAUTION

KEEP OUT OF REACH OF CHILDREN

Do not spray towards eyes. Harmful if swallowed, inhaled, or absorbed through the skin. Avoid breathing of spray mist and use with adequate ventilation. Contact with skin, eyes or clothing should be avoided. Wash thoroughly with soap and warm water after handling.

Do not use as a space spray. Remove pets and cover fish bowl. Before spraying, if possible, occur, get prompt medical aid. To physician - Acetazone sulfate is antidotal.

WARNING: FLAMMABLE! Contents under pressure. Do not use near fire, sparks or flames. Do not puncture or incinerate container. Exposure to temperatures above 130°F may cause bursting.

EPA Reg. 5197-05 AA

EPA Est. 11623 GA-1

FOR INDUSTRIAL USE ONLY

NOT FOR RESALE

ACCEPTED
JAN 9 1975

REGISTRATION DIVISION
WASHINGTON, D.C.

4 DEC 1974