



## OFFICE OF CHEMICAL SAFETY AND POLLUTION PREVENTION

WASHINGTON, D.C. 20460

April 1, 2026

Jennifer Brandon

Agent

Bio-Lab, Inc.

Electronic Transmittal: [jbrandon@delta-ac.com](mailto:jbrandon@delta-ac.com)

Subject: Notification per PRN 98-10 – Update the Label  
Product Name: Bio-Lab Granular Trichlor 21  
EPA Registration Number: 5185-514  
Received Date: 12/23/2025  
Action Case Number: 00680740

Dear Jennifer Brandon:

The Agency is in receipt of your Application for Pesticide Notification under Pesticide Registration Notice (PRN) 98-10 for the above referenced product. The Antimicrobials Division (AD) has conducted a review of this request for its applicability under PRN 98-10 and finds that the action requested falls within the scope of PRN 98-10.

The label submitted with the application has been stamped “Notification” and will be placed in our records.

Should you wish to add/retain a reference to the company’s website on your label, then please be aware that the website becomes labeling under the Federal Insecticide Fungicide and Rodenticide Act and is subject to review by the Agency. If the website is false or misleading, the product would be misbranded and unlawful to sell or distribute under FIFRA section 12(a)(1)(E). 40 CFR 156.10(a)(5) lists examples of statements EPA may consider false or misleading. In addition, regardless of whether a website is referenced on your product’s label, claims made on the website may not substantially differ from those claims approved through the registration process. Therefore, should the Agency find or if it is brought to our attention that a website contains false or misleading statements or claims substantially differing from the EPA approved registration, the website will be referred to the EPA’s Office of Enforcement and Assurance.

Page 2 of 2  
EPA Reg. No. 5185-514  
Action Case Number: 00680740

If you have any questions, please contact LaShonda Bunch at [Bunch.LaShonda@epa.gov](mailto:Bunch.LaShonda@epa.gov).

Sincerely,

A handwritten signature in black ink, appearing to read 'DF', with a long horizontal line extending to the right.

Demson Fuller, Product Manager 32  
Regulatory Management Branch I  
Antimicrobials Division (7510P)  
Office of Pesticide Programs

*{All text in brackets [xxx] is optional and may or may not be included on a final label.}  
{All text in braces {xxx} is administrative and will not appear on a final label.}*

## BioLab Granular Trichlor 21

ACTIVE INGREDIENT:  
Trichloro-s-triazinetrione 58.9%  
OTHER INGREDIENTS 41.1%  
TOTAL INGREDIENTS 100.0%  
(Available Chlorine: 54%)

### NOTIFICATION

5185-514  
The applicant has certified that no changes, other than those reported to the Agency have been made to the labeling. The Agency acknowledges this notification by letter dated:  
04/01/2026

**KEEP OUT OF REACH OF CHILDREN  
DANGER**

See [back] [side] panel for **First Aid and** additional precautionary statements.

**FIRST AID: IF IN EYES:** Hold eye open and rinse slowly and gently with water for 15-20 minutes. Remove contact lenses, if present, after the first 5 minutes, then continue rinsing eye. Call a poison control center or doctor for treatment advice. **IF ON SKIN OR CLOTHING:** Take off contaminated clothing. Rinse skin immediately with plenty of water for 15-20 minutes. Call a poison control center or doctor for treatment advice. **IF INHALED:** Move person to fresh air. If person is not breathing, call 911 or an ambulance, then give artificial respiration, preferably mouth-to-mouth, if possible. Call poison control center or doctor for treatment advice. **IF SWALLOWED:** Call poison control center or doctor immediately for treatment advice. Have person sip a glass of water if able to swallow. Do not induce vomiting unless told to do so by the poison control center or doctor. Do not give anything by mouth to an unconscious person.

**Have the product container or label with you when calling a poison control center or doctor, or going for treatment. [IN CASE OF MEDICAL EMERGENCY, CALL [1-877-800-5553] [or other phone number]**

**Note to Physician:** Probable mucosal damage may contraindicate the use of gastric lavage.

BIOLAB, INC.  
P.O. Box 300002  
LAWRENCEVILLE, GA 30049

Net Contents: *{as indicated on container}*

EPA REG. NO. 5185-514  
EPA EST. NO. 5185-GA-1 [(BL)] {or} [(Z)]  
7616-CA-1 [(C)]

*{If multiple EPA Establishment Numbers appear on the label.}*

[Actual establishment shown in code above or below label printed on [bottle] [container]]  
[Letter designation in lot code printed above or below on [bottle] [container] identifies actual establishment.]  
[Made in USA]

*{Optional marketing statements that may be used with **directions for swimming pool sanitization, shock / superchlorination, algaecide or pool closing / winterization.**}*

[Stabilized Granules]  
[Quick dissolving stabilized chlorinating granules]  
[Do not mix with other products]  
[Ideal for pool start-ups]  
[Stabilized Chlorinator]  
[Routine Chlorinator]  
[For everyday use]  
[Granular Chlorinating Concentrate]  
[Kills Bacteria]  
[Controls Bacteria]  
[With SunShield® [Protects chlorine from sunlight, so you use less]]  
[With Sunlight Protector]  
[Contains SunShield® protection against sunlight]  
[[Easy-to-use],[multifunctional] chlorinating granules protect against algae and bacteria for water that stays [clean], [clear] [&] [free of visible algae]]  
[Stabilized Granules]  
[Do not mix with other products]  
[Kills algae]  
[Algaecide]  
[Algicide]  
[Controls algae]  
[For superchlorination]  
[Shock treatment]  
[Stabilized chlorinator]  
[Destroys swimmer wastes\*]  
[Destroys swimmer contaminants\*]  
[Removes organic contaminants [for clear water] \*]  
[Removes swimmer contaminants [for clear water] \*]  
  
[[Sunlight protected] [removes organic contaminants\*] [removes swimmer contaminants\*]  
[clears water] ]  
  
[\*[such as] [body & suntan oils] [body oils] [&] [suntan oils] [&] [sweat] [perspiration] [&] [lotions] [&] [urine]]  
  
[Restores water clarity]  
[Fast dissolving shock treatment]  
[Kills Bacteria & Algae]  
[No pre-dissolving]  
[For In-ground and Above-ground Pools]  
[Kills [& prevents] green & black pool algae]  
[[With] Algae-killing formula]  
[Sunlight protected [for longer lasting chlorine]  
[Protected against sunlight [to last longer]]  
[Reduces chlorine odor]

[Directly to water]

[Add directly to water]

[Swim-ready in 15 minutes<sup>‡</sup>]

<sup>‡</sup>Refer to the re-entry statement [for pools and spas] on back panel for further guidance]

*{Reader's Note: If both pool and spa directions are used on the marketplace label, "for pools and spas" must be included in the footnote.}*

[For use with all filter types\*\*]

[\*\* [D.E.,] [Sand,] [Cartridge,] [Zeolite]]

[For all Pool Surfaces\*\*\*]

[For use with all surface types\*\*\*]

[\*\*\* [Aggregate,] [Concrete,] [Fiberglass,] [Gunite,] [Plaster,] [Vinyl]]

[Step 2]

[Chlorinate]

[Shock]

[Do not store in direct sunlight]

[Store out of direct sunlight]

[Fast dissolving]

[Clarifies water]

[Clears cloudy water]

[Clears water]

[Does Not Cloud [Pool] Water]

[Will Not Cloud [Pool] Water]

[Contains a Filter Enhancer]

[Enhances filtration]

[Plus] [Improves filter performance]

[With Built in Clarifier]

[Gathers debris for easy removal]

[Gathers debris for easy filtration]

[Plus] [Improves] [Enhances] filtration]

[Clarifier enhances filtration]

[Oxidizer, Buffer, Clarifier, Flocculant]

[Multi-Purpose]

[Creates sparkling water]

[Suitable for small vinyl pools]

[Suitable for pools with a Saline Chlorination System]

[Suitable for use with salt [chlorine generator] pools]

[Suitable for use with Mineral Springs]

[TO OPEN CUT ALONG DOTTED LINE WITH SCISSORS] *{Statement to appear in upper corner of child resistant bag when product is sold in a bag.}*

*{Optional marketing statements that may be used with **swimming pool sanitization.**}*

[Stabilized Granules]

[Do not mix with other products]

[Ideal for pool start-ups]

[Stabilized Chlorinator]

[Routine Chlorinator]

[For everyday use]

[Granular Chlorinating Concentrate]  
[Kills Bacteria]  
[Controls Bacteria]  
[With SUNSHIELD® [Protects chlorine from sunlight, so you use less]]  
[[Easy-to-use],[multifunctional] chlorinating granules protect against algae and bacteria for water that stays [clean], [clear] [&] [free of visible algae]]  
[With built in clarifier, filtration enhancer, and sun light protector]

*{The “BioGuard Care System” below may be placed on the label to allow easy product identification by consumers.}*

[BioGuard Care System (X) Sanitizer ( ) Shock ( ) [Algicide][Algaecide]]  
[BioGuard 3-Step System]

*{Optional marketing statements that may be used with **pool shock**.}*

[For superchlorination]  
[Shock treatment]  
[Stabilized chlorinator]  
[Quick dissolving stabilized chlorinating granules]  
[Destroys swimmer wastes\*]  
[Destroys swimmer contaminants\*]  
[Removes organic contaminants\* [for clear water]]  
[Removes swimmer contaminants\* [for clear water]]

[\*[such as] [body & suntan oils] [body oils] [&] [suntan oils] [&] [sweat] [perspiration] [&] [lotions] [&] [urine]]

[Restores water clarity]  
[Do not mix with other products]  
[Fast dissolving shock treatment]  
[Kills Bacteria & Algae]  
[No pre-dissolving]  
[For In-ground and Above-ground Pools]  
[Kills green & black pool algae]  
[[With] Algae-killing formula]  
[Sunlight protected [for longer lasting chlorine]  
[Protected against sunlight [to last longer]]  
[Reduces chlorine odor]  
[For pools up to 5,000 gallons] {for small pool product offering}  
[Powers through filth for fresh, clear water]  
[Shock]  
[Fast dissolving]  
[Quick dissolving]  
[Clarifies water]  
[Clears cloudy water]  
[Clears water]  
[Creates sparkling water]

*{The “BioGuard Care System” below may be placed on the label to allow easy product identification by consumers.}*

[BioGuard Care System ( ) Sanitizer (X) Shock ( ) [Algicide][Algaecide]]

[Step 2 [of the BioGuard 3-Step System]]

[Suitable for pools with a Saline Chlorination System]

[Suitable for use with Mineral Springs]

*{Optional marketing statements that may be used with **winter pool shock.**}*

[Winter shock treatment]

[Fast dissolving shock treatment]

[Makes spring start up easier]

[Do not mix with other products]

*{Optional marketing statements that may be used with **spa sanitizing.**}*

[Stabilized chlorinator for spas]

[For Spas & Hot Tubs]

[Stabilized Chlorinator]

[Routine Chlorinator]

[For everyday use]

[Granular Chlorinating Concentrate]

[Destroys Contaminants\*]

[\*[such as] [body & suntan oils] [body oils] [&] [suntan oils] [&] [sweat] [perspiration] [&] [lotions]  
[&] [urine]]

[Kills Bacteria]

[Controls Bacteria]

[with SUNSHIELD® [Protects chlorine from sunlight, so you use less]]

[Do not mix with other products]

[Clears [cloudy] water]

[Fast Dissolving [sanitizer [and] [&] shock]]

[For clean, clear spa water]

[For Chlorine Spas]

[Concentrated formula]

[Restores water clarity]

[One-step sanitizer and oxidizer]

*{Optional marketing statements that may be used with **spa and hot tub shock treatment.**}*

[Shock Treatment for Spas]

[For Spas & Hot Tubs]

[Spa Treatment]

[Destroys Algae]

[Destroys Bacteria]

[Destroys Algae and Bacteria]

[Fast Dissolving]

[For Crystal Clear Spa Water]

[For Crystal Clear Water]

[For Sparkling Water]

[For Sparkling, Clear Water]

[Oxidizes Undesirable Compounds\*]

[Destroys undesirable compounds\*]

[Destroys contaminants\*]

[\*[such as] [body & suntan oils] [body oils] [&] [suntan oils] [&] [sweat] [perspiration] [&] [lotions]  
 [&] [urine]]  
 [Do not mix with other products]  
 [Clears [cloudy] water]  
 [Fast Dissolving [shock]]  
 [For clean, clear spa water]  
 [For Chlorine Spas]  
 [Concentrated formula]  
 [Restores water clarity]  
 [One-step sanitizer and oxidizer]

*{Following chart is optional}*

<b>[Application Methods]</b>	Directly to water or skimmer]
<b>[Surface Types]</b>	Aggregate Concrete Fiberglass Gunitite Plaster [Vinyl]]
<b>[Filter Types]</b>	D.E., Sand, Cartridge, Zeolite]

[For Pools] *{For use with products that have pool use directions}*  
 [For Pools Only] *{For use with products that have pool use directions}*  
 [Not for use in Spas] *{For use with products that have pool use directions}*  
 [For Spas] *{For use with products that have spa use directions}*  
 [For Spas Only] *{For use with products that have spa use directions}*

[Scan QR Codes for Spanish Label] [Escanee el código QR para la etiqueta en español] *{pointer language for use with QR code for bilingual labeling}*

*{QR code seen below is a representation only}*



*{Optional marketing statements pertaining to internal tracking numbers and re-order numbers. – may represent any alphanumeric combination}*

[Part #-----]

[RV----]

[-----]

*{Optional Trademark Statements}*

[©2024 Bio-Lab, Inc. All rights reserved.] *{2024 may be replaced with current year}*

[©2024 Easy 1 2 3 Pool Care LLC. All rights reserved.] *{2024 may be replaced with current year}*

[BIOGUARD is a registered trademark of Bio-Lab, Inc.]

[NC Spa Chemistry and the Globe design are trademarks owned by NC Brands L.P.]

[POOL TIME, MaxBlue and the POOL TIME logo are trademarks of Bio-Lab, Inc., used under license.]

[SPA ESSENTIALS is a trademark of Bio-Lab, Inc., used under license.]

[SUN® is a registered trademark of Bio-Lab, Inc., used under license.]

[The CLOROX trademark, the CLOROX Diamond Design logo, the POOL&SPA trademark and logo, and the trade dress associated with any of the foregoing are the property of The Clorox Company and are used under license by Easy 1 2 3 Pool Care LLC.]

*{Directions to be used for swimming pool sanitization product}*

## **SWIMMING POOL SANITIZER**

*{To maintain brand segmentation, two sets of marketing statements are provided to maintain separate brand identity. One of the following Options will be used on the label.}*

### ***{Option 1}***

This [patented] [multifunctional] sanitizer and shock product, when applied [in dry form] directly to the pool or skimmer per the label directions, kills bacteria and unsightly algae, clears up cloudy water and inhibits future algae growth. This product provides the perfect solution for clear inviting pool water. [Specifically you can use this product:]

- [For routine daily chlorination (sanitation)]
- [To superchlorinate]
- [To shock]
- [To kill algae]

### ***{Option 2}***

[BioLab Granular Trichlor 21] *{or}* [This product] is a compound action product:

- Sanitizes – to kill bacteria
- Shocks – to destroy swimmer contaminants
- Clarifies – to clear water
- Algicide – kills algae

Apply [BioLab Granular Trichlor 21] *{or}* [this product] directly to the pool or through the skimmer per label directions. Routine use of [BioLab Granular Trichlor 21] *{or}* [this product] provides pool owners crystal clear sparkling water. [BioLab Granular Trichlor 21] *{or}* [this product] has SUNSHIELD<sup>®</sup> that protects the chlorine active ingredient from degrading due to sunlight. [This product can be used:]

- [As a routine sanitizer]
- [To super chlorinate]
- [To shock]
- [To kill algae]

**DIRECTIONS FOR USE:** It is a violation of Federal Law to use this product in a manner inconsistent with its labeling. **READ ENTIRE LABEL AND USE STRICTLY IN ACCORDANCE WITH PRECAUTIONARY STATEMENTS AND DIRECTIONS FOR USE.**

Ensure all pool equipment is working properly. Clean or backwash filter following manufacturer's directions. Adjust pH to between 7.2-7.6. In chlorinated pools, add stabilizer to establish a minimum stabilizer level of 30-40 ppm to reduce the degradative effects of sunlight upon the chlorine residual. When using other products as outlined in the directions for this product, always follow directions on those products.

**APPLICATION METHOD:** DO NOT pre-dissolve this product before adding to pool or skimmer. DO NOT mix this product with any other products or chemicals. Always apply this product in its dry form using a clean dry plastic cup or scoop. Do not use this cup or scoop for any other purpose. This product should be applied [in its dry form] directly to pool or through the skimmer as follows:

**Directly to Pool:** Add product in dry form directly to the pool water by broadcasting evenly across the surface of the pool, with the pump operating for at least 2 to 4 hours. If your pool has a bleachable surface, such as vinyl, colored plaster, painted or fiberglass, use skimmer application, or add directly to pool, brushing visible product until completely dissolved to avoid bleaching. [If you have a vinyl liner and cannot see the bottom of your pool, apply this product directly to skimmer to avoid bleaching.]

**Directly to Skimmer:** Add product in dry form directly through the skimmer with the basket removed (along with any product in skimmer) and the pump operating. Rinse the skimmer of any undissolved product. Replace the skimmer basket (along with any removed product) and keep the pump running for at least 2 to 4 hours.

**[INITIAL STARTUP:** Use this method if you are opening your pool in the spring, the pool has not been maintained for several weeks, or if the pool is freshly filled. Brush all pool surfaces with pump operating. Following the appropriate *Application Method*, add 1 lb. (2, 8oz cups) of this product in dry form per 10,000 gallons of pool water. After two hours, test chlorine level (residual). Repeat dosage until you obtain a chlorine level of 1 - 4 ppm.]

**[ROUTINE CHLORINATION:** Following the appropriate *Application Method*, add 2 to 4 oz (1/4 to 1/2, 8oz cup) of this product in dry form per 10,000 gallons of pool water every day, every other day or as often as needed to maintain a chlorine level between 1 - 4 ppm. The amount of product required and frequency of addition will vary with the number of swimmers, water temperature and amount of rain. Operate the pump a minimum of 10 hours per day for best results.]

**[SHOCK TREATMENT:** For best results, apply product weekly as part of your maintenance routine, or when bather loads are high, water appears hazy or dull, unpleasant odors or eye irritation occurs, or after heavy rain. Following the appropriate *Application Method*, add 1 lb. (2, 8oz cups) of this product in dry form per 10,000 gallons of pool water.]

**[ALGAE TREATMENT:** With pump operating, brush algae from pool surfaces. Following the appropriate *Application Method*, add 1 lb. (2, 8oz cups) of this product in dry form per 10,000 gallons of pool water for light algae growth. Add 2 lb. (4, 8oz cups) of this product in dry form per 10,000 gallons of pool water for moderate to heavy algae growth. If necessary, repeat the treatment.]

**[WINTERIZATION:** If algae is present, treat using ALGAE TREATMENT directions, then proceed as follows: To an algae free pool, add 2 lb. (4, 8oz cups) of this product in dry form per 10,000 gallons of pool water following the appropriate *Application Method*. Cover the pool with a pool cover and prepare heater, pump, and filter components for winter using manufacturer's recommendations.]

**Reentry into treated swimming pools is prohibited above levels of 4 ppm chlorine due to risk of bodily injury.**

[NOTE: When using variable speed pumps, run time and speeds may impact product dissolution performance.]

*{Directions to be used for superchlorination/shock product}*

## **FOR POOL SHOCK AND SUPERCHLORINATION**

*{To maintain brand segmentation, two sets of marketing statements are provided to maintain separate brand identity. One of the following Options will be used on the label.}*

### ***{Option 1}***

[BioLab Granular Trichlor 21] *{or}* [This product] is a compound action product:

- Sanitizes – to kill bacteria
- Shocks – to destroy swimmer contaminants
- Clarifies – to clear water
- Algicide – kills algae

Apply [BioLab Granular Trichlor 21] *{or}* [this product] directly to the pool or through the skimmer per label directions. Routine use of [BioLab Granular Trichlor 21] *{or}* [this product] provides pool owners crystal clear sparkling water. [BioLab Granular Trichlor 21] *{or}* [this product] has SUNSHIELD® that protects the chlorine active ingredient from degrading due to sunlight. [This product can be used:]

- [To super chlorinate]
- [To shock]
- [To kill algae]

### ***{Option 2}***

This [patented] [multifunctional] product, when applied [in dry form] directly to the pool or skimmer per the label directions, kills bacteria and unsightly algae, clears up cloudy water and inhibits future algae growth. This product provides the perfect solution for clear inviting pool water. Shock treatment is needed when bather loads are high, water appears hazy or dull, unpleasant odors or eye irritation occurs, or after heavy rain. [Specifically you can use this product:]

- [To superchlorinate]
- [To shock]
- [To kill algae]

**DIRECTIONS FOR USE:** It is a violation of Federal Law to use this product in a manner inconsistent with its labeling. **READ ENTIRE LABEL AND USE STRICTLY IN ACCORDANCE WITH PRECAUTIONARY STATEMENTS AND DIRECTIONS FOR USE.**

Ensure all pool equipment is working properly. Clean or backwash filter following manufacturer's directions. Adjust pH to between 7.2-7.6. In chlorinated pools, add stabilizer to establish a minimum stabilizer level of 30-40 ppm to reduce the degradative effects of sunlight upon the chlorine residual.

When using other products as outlined in the directions for this product, always follow directions on those products.

*{For application as a Shock when sold in a child resistant bag}*

**[APPLICATION METHOD:** DO NOT pre-dissolve this product before adding to pool or skimmer. DO NOT mix this product with any other products or chemicals. This product should be applied [in its dry form] directly to pool or through the skimmer as follows:]

*{For application as a Shock when sold in a bottle/bucket}*

**[APPLICATION METHOD:** DO NOT pre-dissolve this product before adding to pool or skimmer. DO NOT mix this product with any other products or chemicals. Always apply this product in its dry form using a clean dry plastic cup or scoop. Do not use this cup or scoop for any other purpose. This product should be applied [in its dry form] directly to pool or through the skimmer as follows:]

**Directly to Pool:** Add product in dry form directly to the pool water by broadcasting evenly across the surface of the pool, with the pump operating for at least 2 to 4 hours. If your pool has a bleachable surface, such as vinyl, colored plaster, painted or fiberglass, use skimmer application, or add directly to pool, brushing visible product until completely dissolved to avoid bleaching. [If you have a vinyl liner and cannot see the bottom of your pool, apply this product directly to skimmer to avoid bleaching.]

**Directly to Skimmer:** Add product in dry form directly through the skimmer with the basket removed (along with any product in skimmer) and the pump operating. Rinse the skimmer of any undissolved product. Replace the skimmer basket (along with any removed product) and keep the pump running for at least 2 to 4 hours.

**[INITIAL STARTUP:** Use this method if you are opening your pool in the spring, the pool has not been maintained for several weeks, or if the pool is freshly filled. Brush all pool surfaces with pump operating. Following the appropriate *Application Method*, add 1 lb. (2, 8oz cups) of this product in dry form per 10,000 gallons of pool water. After two hours, test chlorine level (residual). Repeat dosage until you obtain a chlorine level of 1 – 4 ppm.]

**[SHOCK TREATMENT:** For best results, apply product weekly as part of your maintenance routine, or when bather loads are high, water appears hazy or dull, unpleasant odors or eye irritation occurs, or after heavy rain. Following the appropriate *Application Method*, add 1 lb. (2, 8oz cups) of this product in dry form per 10,000 gallons of pool water.]

**[SUPERCHLORINATION:** Superchlorination treatment may be needed when high levels of combined chlorine, cloudy water or algae growth occur. Following the appropriate *Application Method*, add 2 lb. of this product in dry form per 10,000 gallons of pool water.]

**[ALGAE TREATMENT:** With pump operating, brush algae from pool surfaces. Following the appropriate *Application Method*, add 1 lb. (2, 8oz cups) of this product in dry form per 10,000 gallons of pool water for light algae growth. Add 2 lb. (4, 8oz cups) of this product in dry form per 10,000 gallons of pool water for moderate to heavy algae growth. If necessary, repeat the treatment.]

**[WINTERIZATION:** If algae is present, treat using ALGAE TREATMENT directions, then proceed as follows: To an algae free pool, add 2 lb. (4, 8oz cups) of this product in dry form per 10,000 gallons of pool water following the appropriate *Application Method*. Cover the pool with a pool cover and prepare heater, pump, and filter components for winter using manufacturer's recommendations.]

**Reentry into treated swimming pools is prohibited above levels of 4 ppm chlorine due to risk of bodily injury.**

**[NOTE: When using variable speed pumps, run time and speeds may impact product dissolution performance.]**

*{Directions to be used for winter swimming pool treatment}*

## **WINTER SWIMMING POOL TREATMENT**

[BioGuard® has a wide variety of products to care for your pool during the off season. These products are designated as “Off Season”.]

To avoid costly spring problems (algae, stains, cloudy water, high chlorine demand) properly prepare your pool for the winter using this product. This product oxidizes organic wastes, helps keep pool surfaces clean, and helps protect water during the off season months.

**DIRECTIONS FOR USE:** It is a violation of Federal Law to use this product in a manner inconsistent with its labeling. Read entire label and use strictly in accordance with precautionary statements and directions.

Before treating the pool, chemically balance the water and adjust pH to 7.4 - 7.6. Brush and vacuum the pool. Chemically clean the filter and clean skimmer and pump baskets.

*{For application as a Shock when sold in a child resistant bag}*

**[APPLICATION METHOD: DO NOT** pre-dissolve this product before adding to pool or skimmer. **DO NOT** mix this product with any other products or chemicals. This product should be applied [in its dry form] directly to pool or through the skimmer as follows:]

*{For application as a Shock when sold in a bottle/bucket}*

**[APPLICATION METHOD: DO NOT** pre-dissolve this product before adding to pool or skimmer. **DO NOT** mix this product with any other products or chemicals. Always apply this product in its dry form using a clean dry plastic cup or scoop. Do not use this cup or scoop for any other purpose. This product should be applied [in its dry form] directly to pool or through the skimmer as follows:]

**Directly to Pool:** Add product in dry form directly to the pool water by broadcasting evenly across the surface of the pool, with the pump operating for at least 2 to 4 hours.

NOTE: For WHITE PLASTER POOLS, broadcast this product directly into the pool water. FOR VINYL, FIBERGLASS, PAINTED AND COLORED PLASTER POOLS, ADD DIRECTLY TO SKIMMER (SEE BELOW).

**Directly to Skimmer:** Add product in dry form directly through the skimmer with the basket removed (along with any product in skimmer) and the pump operating. Rinse the skimmer of any undissolved product. Replace the skimmer basket (along with any removed product) and keep the pump running for at least 2 to 4 hours.

**WINTERIZATION:** Following the appropriate *Application Method*, add 2 lb. of this product in dry form per 10,000 gallons of pool water. Circulate water for several hours, then apply a BioGuard winterizing algae treatment following appropriate directions. Turn off pump. Drain equipment or add a swimming pool antifreeze to equipment to prevent freeze damage. Install pool cover. A second

treatment of this product in mesh covered or non-covered pools may be required prior to water freezing (mid-winter). If second treatment is applicable, only apply if able to add product with pump running according to the *Application Methods* described above.

[NOTE: When using variable speed pumps, run time and speeds may impact product dissolution performance.]

*{Directions to be used for spa and hot tub sanitization}*

**SPA AND HOT TUB SANITIZER:**

When used as directed, this product is effective as a sanitizing agent for spa and hot tub water.

**DIRECTIONS FOR USE:** It is a violation of Federal Law to use this product in a manner inconsistent with its labeling. Read entire label and use strictly in accordance with precautionary statements and directions.

Ensure all spa and hot tub equipment is working properly. Clean or backwash filter following manufacturer's directions. Adjust pH to between 7.2-7.6. When using other products as outlined in the directions for this product, always follow directions on those products.

**MAINTENANCE DOSES:** With pump on, add 1/2 teaspoon of this product per 100 gallons of water (or 5 teaspoons per 1,000 gallons) directly to the spa water as an initial treatment. Repeat at 15 to 20 minute intervals until a residual of 3 - 5 ppm of available chlorine is established as determined by test kit [or test strips]. A test kit [or test strips] must be used regularly to determine the frequency of additional doses of this product needed to maintain the chlorine residual of 3 - 5 ppm.

**[SUPERCHLORINATION] {or} [SHOCK]:** With pump on, add one teaspoon of this product per 100 gallons of water (or 1/4 cup per 1,000 gallons) directly to the spa water. Superchlorination may be needed on a nightly basis in a heavily used spa or as infrequently as once a week in a moderately used spa.

**Reentry into treated spas is prohibited above levels of 5 ppm chlorine due to risk of body injury.**

[NOTE: When using variable speed pumps, run time and speeds may impact product dissolution performance.]

*{Directions to be used for spa and hot tub shock / superchlorination}*

**SPA AND HOT TUB [SHOCK] [SUPERCHLORINATION]:**

When used as directed, this product is effective as a [shock] [superchlorination] treatment for spa and hot tub water.

**DIRECTIONS FOR USE:** It is a violation of Federal Law to use this product in a manner inconsistent with its labeling. Read entire label and use strictly in accordance with precautionary statements and directions.

Ensure all spa and hot tub equipment is working properly. Clean or backwash filter following manufacturer's directions. Adjust pH to between 7.2-7.6. When using other products as outlined in the directions for this product, always follow directions on those products.

**[SUPERCHLORINATION] {or} [SHOCK]:** With pump on, add one teaspoon of this product per 100 gallons of water (or 1/4 cup per 1,000 gallons) directly to the spa water. Superchlorination may be needed on a nightly basis in a heavily used spa or as infrequently as once a week in a moderately used spa.

**Reentry into treated spas is prohibited above levels of 5 ppm chlorine due to risk of body injury.**

[NOTE: When using variable speed pumps, run time and speeds may impact product dissolution performance.]

*{Storage and Disposal directions when product is sold in bottles/buckets.}*

**[STORAGE AND DISPOSAL:** Keep this product dry in original tightly closed container when not in use. Store in a cool, dry, well ventilated area away from heat or open flame. In case of decomposition, isolate container if possible and flood area with large amounts of water to dissolve all material before discarding this container. Keep area ventilated until all fumes are gone. Do not contaminate food or feed by storage or disposal. **CONTAINER DISPOSAL:** Non-refillable container. Do not reuse or refill this container. Offer for recycling, if available. Triple rinse container (or equivalent) promptly after emptying.]

*{Storage and Disposal directions when product is sold in bags.}*

**[STORAGE AND DISPOSAL:** Keep this product dry in its original unopened bag until use. Store in a cool, dry, well ventilated area away from heat or open flame. In case of decomposition, isolate container if possible and flood area with large amounts of water to dissolve all material before discarding this container. Keep area ventilated until all fumes are gone. Do not contaminate food or feed by storage or disposal. **CONTAINER DISPOSAL:** Non-refillable container. Do not reuse or refill this container. Offer for recycling, if available. Triple rinse container (or equivalent) promptly after emptying.]

#### **PRECAUTIONARY STATEMENTS:**

**HAZARDS TO HUMANS AND DOMESTIC ANIMALS:** DANGER: Corrosive: Causes irreversible eye damage. Harmful if swallowed, inhaled, or absorbed through skin. Do not get in eyes or on clothing. Avoid contact with skin. Avoid breathing dust or fumes. Wear goggles or safety glasses and rubber gloves when handling this product. Wash thoroughly with soap and water after handling and before eating, drinking, chewing gum, using tobacco or using the toilet. Remove and wash contaminated clothing before reuse.

*~~{When First Aid is not located on front panel of label, it will be separated by line rules from adjacent text and be in a different color.}~~*

~~**FIRST AID: IF IN EYES:** Hold eye open and rinse slowly and gently with water for 15-20 minutes. Remove contact lenses, if present, after the first 5 minutes, then continue rinsing eye. Call a poison control center or doctor for treatment advice. **IF ON SKIN OR CLOTHING:** Take off contaminated clothing. Rinse skin immediately with plenty of water for 15-20 minutes. Call a poison control center or doctor for treatment advice. **IF INHALED:** Move person to fresh air. If person is not breathing, call 911 or an ambulance, then give artificial respiration, preferably mouth-to-mouth, if possible. Call poison control center or doctor for treatment advice. **IF SWALLOWED:** Call poison control center or doctor immediately for treatment advice. Have person sip a glass of water if able to swallow. Do not induce vomiting unless told to do so by the poison control center or doctor. Do not give anything by mouth to an unconscious person.~~

~~**Have the product container or label with you when calling a poison control center or doctor, or going for treatment. [IN CASE OF MEDICAL EMERGENCY, CALL [1-877-800-5553] [or other phone number]**~~

~~**Note to Physician:** Probable mucosal damage may contraindicate the use of gastric lavage.~~

**PHYSICAL OR CHEMICAL HAZARDS:** CONTAINS AN OXIDIZING AGENT: DO NOT mix with other products or chemicals. Never add water to product. Always add product in dry form directly to pool or pool skimmer. Use clean dry utensils. Do not add this product to any dispensing device containing remnants of any other product. Such use may cause a violent reaction leading to fire or explosion. Contamination with organic matter or other chemicals will start a chemical reaction and generate heat, hazardous gas, possible fire, and explosion. In case of contamination or decomposition, do not reseal container. If possible, isolate container in open air or well-ventilated area. Flood area with large volumes of water.

*{Environmental hazards statement for end-use products in containers of less than 5 gallons (liquid) or less than 50 pounds (solid, dry weight).}*

**[ENVIRONMENTAL HAZARDS:** This pesticide is toxic to fish and aquatic organisms.]

*{Environmental hazards statement for end-use products in containers of equal to or greater than 5 gallons (liquid) or equal to or greater than 50 pounds (solid, dry weight).}*

**[ENVIRONMENTAL HAZARDS:** This pesticide is toxic to fish and aquatic organisms. Do not discharge effluent containing this product into lakes, streams, ponds, estuaries, oceans or other waters unless in accordance with the requirements of a National Pollutant Discharge Elimination System (NPDES) permit and the permitting authority has been notified in writing prior to discharge. Do not discharge effluent containing this product to sewer systems without previously notifying the local sewage treatment plant authority. For guidance contact your State Water Board or Regional Office of the EPA.]

**[NOTE:** Buyer assumes all responsibilities for safety and use not in accordance with directions.]

**[NOTE:** User assumes all responsibility for use not in accordance with directions.]

*{The following is optional text to be used at BioLab's discretion. This information is non-essential and will be provided only as a courtesy. Will not appear on all labels.}*

## **HOW TO CALCULATE POOL CAPACITY**

### **Shape of Pool Gallons of water**

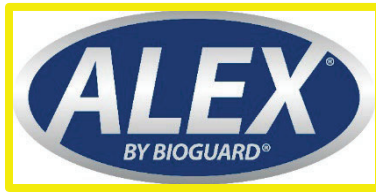
Rectangular    Average depth x average length x average width x 7.5

Circular        Diameter x diameter x average depth x 5.9

Oval            Full width x full length x average depth x 6.7

Irregular      Consult pool builder

{OPTIONAL GRAPHICS}

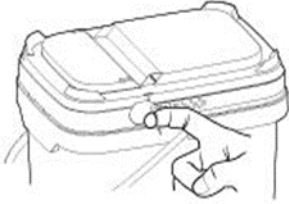


{OPTIONAL GRAPHICS CONTINUED}



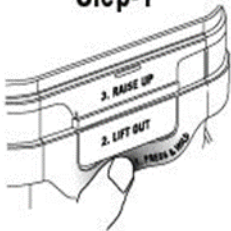
**{OPTIONAL GRAPHICS CONTINUED}**

**Tamper Evident Tear Strip**  
Tear away by using "ring pull" on either side of lid



**To open the lid (after the tear strip is removed)**

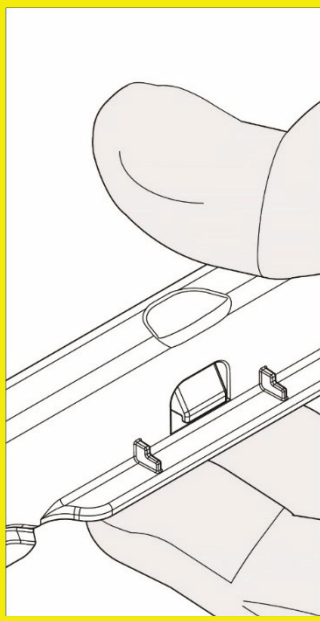
**Step-1**



**Step-2**



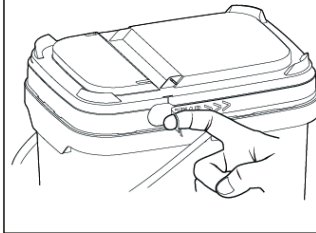
**Step-3**



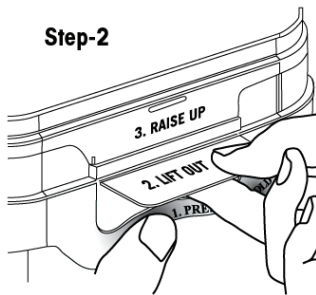
Children can fall into bucket and drown. Keep children away from bucket with even a small amount of liquid.

Los niños pueden caer dentro de el balde y ahogarse. Mantenga a los niños alejados de los baldes aunque solo contengan un poco de liquido.

**Tamper Evident Tear Strip**  
Tear away by using "ring pull" on either side of lid

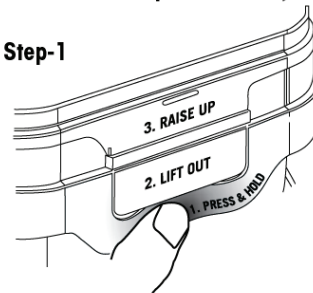


**Step-2**

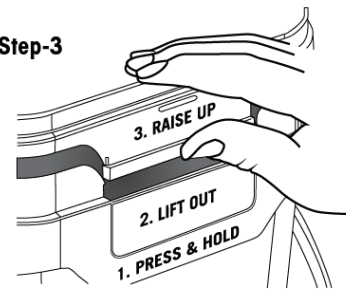


**To open the lid (after the tear strip is removed)**

**Step-1**



**Step-3**



**Do not store in direct sunlight**

**{OPTIONAL GRAPHICS CONTINUED}**

*{Note: The appropriate symbol(s) will be included based on packaging}*

