

US ENVIRONMENTAL PROTECTION AGENCY OFFICE OF PESTICIDES PROGRAMS REGISTRATION DIVISION (75-767) WASHINGTON, DC 20460	EPA REGISTRATION NO. 5185-435	DATE OF ISSUANCE MAR 10 1994
	TERM OF ISSUANCE	
NOTICE OF PESTICIDE: <input type="checkbox"/> REGISTRATION <input type="checkbox"/> REREGISTRATION <i>(Under the Federal Insecticide, Fungicide, and Rodenticide Act, as amended)</i>	NAME OF PESTICIDE PRODUCT Synergy Tabs	

NAME AND ADDRESS OF REGISTRANT (Include ZIP code)

Biolab, Inc.
P.O. Box 1489
Decatur, GA 30031

NOTE: Changes in labeling formula differing in substance from that accepted in connection with this registration must be submitted to and accepted by the Registration Division prior to use of the label in commerce. In any correspondence on this product always refer to the above U.S. EPA registration number.

On the basis of information furnished by the registrant, the above named pesticide is hereby Registered/Reregistered under the Federal Insecticide, Fungicide, and Rodenticide Act.

A copy of the labeling accepted in connection with this Registration/Reregistration is returned herewith.

Registration is in no way to be construed as an indorsement or approval of this product by this Agency. In order to protect health and the environment, the Administrator, on his motion, may at any time suspend or cancel the registration of a pesticide in accordance with the Act. The acceptance of any name in connection with the registration of a product under this Act is not to be construed as giving the registrant a right to exclusive use of the name or to its use if it has been covered by others.

This product is conditionally registered in accordance with FIFRA sec. 3(c)(7)(A) provided that you:

1. Submit/cite all data required for registration/reregistration of your product under FIFRA sec. 3(c)(5) or sec. 4 when the Agency requires all registrants of similar products to submit such data.
2. Add the phrase "EPA Registration No. 5185-435".
3. Submit five (5) copies of your final printed labeling before you release the product for shipment. Refer to the A-79 enclosure for a further description of final printed labeling.

If these conditions are not complied with, the registration will be subject to cancellation in accordance with FIFRA sec. 6(e). Your release for shipment of the product constitutes acceptance of these conditions.

ATTACHMENT IS APPLICABLE

SIGNATURE OF APPROVING OFFICIAL	DATE
---------------------------------	------

A stamped copy of the label is enclosed for your records.

Sincerely,



Ruth G. Douglas, PM 32
Antimicrobial Program Branch
Registration Division

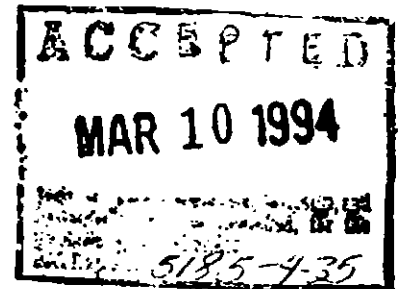
3 9 6

SYNERGY TABS

**SPECIFICALLY FORMULATED FOR USE IN AUTOMATIC CHLORINATORS
CONTAINS ATC-3 EROSION CONTROL AGENT
INCREASED CHLORINE EFFICIENCY
ENHANCED SWIMMER COMFORT
PATENTED TECHNOLOGY**

ACTIVE INGREDIENT:	
SODIUM TRICHLORO-S-TRIAZINETRIONE	91.5
SODIUM TETRABORATE PENTAHYDRATE	5.0
INERT INGREDIENTS:	3.5
TOTAL	100.0

**KEEP OUT OF REACH OF CHILDREN
DANGER**

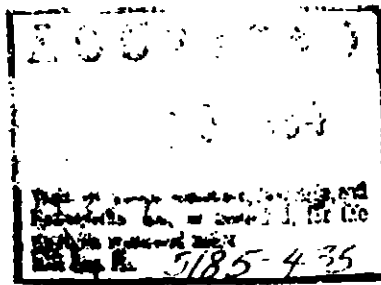


**SEE BACK PANEL FOR STATEMENT OF PRACTICAL
TREATMENT AND ADDITIONAL PRECAUTIONARY
STATEMENTS**

**MANUFACTURED BY:
BIOLAB, INC.
DECATUR, GEORGIA 30031**

**EPA REG. NO. 5185-
EPA EST. NO. 5185-GA-2**

NET WEIGHT



4 7 6

DIRECTIONS FOR USE:

It is a violation of federal law to use this product in a manner inconsistent with its labeling. Read entire label and use strictly in accordance with precautionary statements and directions.

FOR CHLORINATOR OR FEEDER:

This product is specifically formulated for use in automatic type feeders and provides highly effective pool water sanitization when used in this manner. This combination of ingredients not only provides efficient sanitization but also enhances the water quality to reduce potential eye and skin irritation. This product is formulated to dissolve more cleanly and uniformly in automatic feeders thereby reducing plugging, fouling, maintenance requirements and adjustments.

Prior to using this product, the filter system should be properly cleaned and backwashed and the pool water pH adjusted to 7.2-7.6. It is recommended that the pool be superchlorinated to establish a chlorine residual of 1.0-3.0 ppm of free chlorine.

Initial Application: This product is specially designed for use in automatic type feeders **except for automatic bromine type feeders (See Caution below)**. Turn the pump off before opening the feeder housing. Stand to the side of the feeder and carefully remove the feeder lid allowing any pressure that may have built up to bleed off. Inspect the reservoir and clean thoroughly if any build-up of greasy deposits, dirt or any other debris are present in the feeder. Prior to adding this product to the feeder, refer to the operating instructions provided by the manufacturer of the unit. Fill the feeder according to the operating instructions and reclose making sure the feeder lid is securely tightened. Turn on the pump to check the system for proper sealing. Adjust the feeder control rate according to the manufacturers instructions to provide a constant treatment level of 1.0-3.0 ppm free chlorine in the pool water. Proper feed rate is determined by regular testing with a quality pool water test kit.

Routine Maintenance: Test pool water regularly (at least weekly) and check feeder weekly, refilling as needed. Pools should be shocked routinely to maintain optimum water quality. Add additional product as needed to maintain a free chlorine level of 1.0-3.0 ppm in the pool water. Regular use of a pool water test kit is recommended to make certain adequate levels of chlorine sanitizer and proper pH are being maintained in the pool water.

CAUTION: Do not use this product in automatic brominators. Use of this product through a bromine type feeder could cause an adverse chemical reaction or explosion resulting in serious bodily injury, death or property damage. If this product is being added through the skimmer, do not add any other chemical products or foreign substances through the skimmer as this may cause potential explosive hazards resulting in serious bodily injury or death.

Because of a potential bleaching of colored surfaces, this product is not recommended for skimmer application in pools with colored or bleachable surfaces.

FOR GENERAL USE:

This product combines specific ingredients that provide a convenient method of swimming pool sanitization while also enhancing the water quality. This improves swimmer comfort by reducing potential eye and skin irritation. This product is a highly effective swimming pool disinfectant when used as directed. Prior to using this product, the filter system should be properly cleaned and backwashed and the pool water pH adjusted to 7.2-7.6. It is recommended that the pool be superchlorinated to establish a chlorine residual of 1.0-3.0 ppm of free chlorine.

Initial Application: This product can be used by applying directly through plastic pool skimmers or through various types of proportioning mechanisms such as automatic feeders or chlorinators. **This product should not be used in automatic brominators or feeders designed for use with bromine. See Caution below.** For application through plastic skimmers, add product as needed to maintain a free chlorine residual of 1.0-3.0 ppm in the pool water. If an automatic feeder is being used, refer to the manufacturer's operating instructions prior to adding this product. Fill the unit with this product according to the manufacturer's instructions and adjust the feed rate control to provide a constant treatment level of 1.0-3.0 ppm free chlorine in the pool water. Proper chlorine sanitizer level is determined by regular testing with a quality pool water test kit.

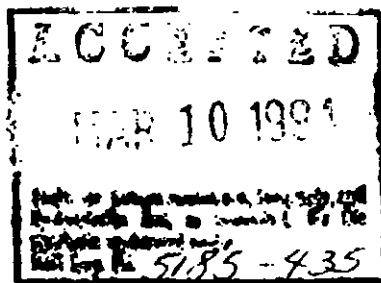
Routine Maintenance: Test pool water routinely (at least weekly) to make certain adequate levels of chlorine and proper pH are being maintained. Check feeders weekly to make certain they are full. Pools should be shocked routinely to help maintain optimum water quality.

CAUTION: Do not use this product in automatic brominators or bromine feeders. Use of this product through a bromine feeding device could cause an adverse chemical reaction or explosion resulting in property damage, serious bodily injury or death. If this product is being added through the skimmer, do not add any other chemical products or foreign substances through the skimmer as this may cause potential explosive hazards resulting in serious bodily injury or death.

Reentry into treated swimming pools is prohibited above levels of 3 ppm chlorine.

STORAGE AND DISPOSAL Do not contaminate food or feed by storage, disposal, or cleaning or equipment. Keep this product dry in a tightly closed container when not in use. Store in a cool, dry, well ventilated area away from heat or open flame. In case of decomposition, isolate container (if possible) and flood area with large amounts of water to dissolve all material before discarding this container.

CONTAINER DISPOSAL: Do not reuse container, but place in trash collection.



PRECAUTIONARY STATEMENTS

HAZARDS TO HUMANS AND DOMESTIC ANIMALS DANGER: Highly corrosive. Causes skin and eye damage. May be fatal if swallowed. Do not get in eyes, on skin or on clothing. Wear goggles or safety glasses and rubber gloves when handling this product. Irritating to nose and throat. Avoid breathing dust. Remove and wash contaminated clothing before reuse.

PHYSICAL OR CHEMICAL HAZARDS STRONG OXIDIZING AGENT: Mix only with water. Use clean dry utensils. Do not add this product to any dispensing device containing remnants of any other product. Such use may cause a violent reaction leading to fire or explosion. Contamination with moisture, organic matter or other chemicals will start a chemical reaction and generate heat, chlorine gas (and possible fire and explosion). In case of contamination or decomposition, do not reseal container. If possible, isolate container in open air or well ventilated area. Flood area with large volumes of water, if necessary.

ENVIRONMENTAL HAZARDS This pesticide is toxic to fish and aquatic organisms. Do not discharge effluent containing this product into lakes, streams, ponds, estuaries, oceans or other waters unless in accordance with the requirements of a National Pollutant Discharge Elimination System (NPDES) permit and the permitting authority has been notified in writing prior to discharge. Do not discharge effluent containing this product to sewer systems without previously notifying the local sewage treatment plant authority. For guidance contact your State Water Board or Regional Office of the EPA.

STATEMENTS OF PRACTICAL TREATMENT IF SWALLOWED: Drink large amounts of water. DO NOT induce vomiting. Call a physician or poison control center immediately. IF CONTACT WITH EYES OCCURS: Flush with cold water for at least 15 minutes. Get medical attention. IF CONTACT WITH SKIN: Brush off excess chemical and flush skin with cold water for at least 15 minutes. If irritation persists, get medical attention. IF INHALED, remove to fresh air. Never give anything by mouth to an unconscious person. Call a physician immediately.

IN CASE OF MEDICAL EMERGENCY, CALL 1-303-623-5716.

NOTE: Buyer assumes all responsibility for safety and use not in accordance with direction.

*U.S. Patent #4,594,091

