



UNITED STATES ENVIRONMENTAL PROTECTION AGENCY
WASHINGTON, DC 20460

September 24, 2019

OFFICE OF CHEMICAL SAFETY
AND POLLUTION PREVENTION

Mark Jernigan
Registration Manager, Pool
Bio Lab, Inc.
P.O. Box 30002
Lawrenceville, GA 30049

Subject: Notification per PRN 98-10 – Minor Label Revisions
Product Name: BIOGUARD MASTER TRICHLORO COMPACTED
EPA Registration Number: 5185-144
Application Date: August 8, 2019
Decision Number: 554342

Dear Mr. Jernigan:

The Agency is in receipt of your Application for Pesticide Notification under Pesticide Registration Notice (PRN) 98-10 for the above referenced product. The Antimicrobials Division (AD) has conducted a review of this request for its applicability under PRN 98-10 and finds that the action requested falls within the scope of PRN 98-10.

The label submitted with the application has been stamped “Notification” and will be placed in our records.

Should you wish to add/retain a reference to the company’s website on your label, then please be aware that the website becomes labeling under the Federal Insecticide Fungicide and Rodenticide Act and is subject to review by the Agency. If the website is false or misleading, the product would be misbranded and unlawful to sell or distribute under FIFRA section 12(a)(1)(E). 40 CFR 156.10(a)(5) list examples of statements EPA may consider false or misleading. In addition, regardless of whether a website is referenced on your product’s label, claims made on the website may not substantially differ from those claims approved through the registration process. Therefore, should the Agency find or if it is brought to our attention that a website contains false or misleading statements or claims substantially differing from the EPA approved registration, the website will be referred to the EPA’s Office of Enforcement and Compliance.

If you have any questions, you may contact Melanie Bolden at (703) 347-0165 or via email at Bolden.Melanie@epa.gov.

Sincerely,

A handwritten signature in cursive script that reads "Melanie Bolden for".

Demson Fuller, Product Manager 32
Antimicrobials Division (7510P)
Regulatory Management Branch I
Office of Pesticide Programs

{All text in brackets [xxx] is optional and may or may not be included on a final label.}
{All text in braces {xxx} is administrative and will not appear on a final label.}

BIOGUARD
MASTER TRICHLORO
COMPACTED

ACTIVE INGREDIENT:
Trichloro-s-triazinetrione 99.0%
OTHER INGREDIENTS 1.0%
TOTAL INGREDIENTS 100.0%
(Available Chlorine: 90%)

KEEP OUT OF REACH OF CHILDREN
DANGER

See [back] [side] panel for First Aid and additional precautionary statements.

BIOLAB, INC.
PO BOX 300002
LAWRENCEVILLE, GEORGIA 30049

Net Weight: {as indicated on container}

EPA REG. NO. 5185-144
EPA EST. NO. 5185-GA-1 [(BL)] {or} [(Z)]
7616-CA-1 [(C)]

{If multiple EPA Establishment Numbers appear on the label.}

[Actual establishment shown in code above or below label printed on [bottle] [container]]

[Letter designation in lot code printed above or below on [bottle] [container] identifies actual establishment.]

NOTIFICATION

5185-144

The applicant has certified that no changes, other than those reported to the Agency have been made to the labeling. The Agency acknowledges this notification by letter dated:

09/24/2019

*{ Optional marketing statements that may be used with **small tablets** }*

[Stabilized chlorinating tablets for feeder or floater application.]

[Concentrated]

[Stabilized]

[1" Chlorinating Tablets]

[Slow Dissolving]

[Long lasting]

[1" Size]

[1" Tablets]

[Sanitizer]

[For feeder or floater application]

[Step 1] *{Sanitizers are marketed as step one of a three step program to treat swimming pool water.}*

[Professional Pool Care Commercial and Service Use] *{For use on larger size containers sold to pool service professionals}*

*{Optional marketing statements that may be used with **large tablets** }*

[Concentrated, Stabilized 3" Wrapped Tablets]

[Stabilized chlorinating tablets for feeder and skimmer application.]

[3" Size]

[3" Tablets]

[Giant 3" Size]

[Wrapped]

[Sanitizer]

[Long lasting]

[Concentrated]

[Stabilized]

[3" Chlorinating Tablets]

[Slow Dissolving]

[For feeder and skimmer application.]

[Step 1] *{Sanitizers are marketed as step one of a three step program to treat swimming pool water.}*

[Professional Pool Care Commercial and Service Use] *{For use on larger size containers sold to pool service professionals}*

[Approximate weight of each tablet: "x" ounces] {"x" equals weight of tablet.}

*{Optional marketing statements that may be used with **large tablets used with the Hurricane Cybernetic Chlorine Saving System** }*

[For use with the Hurricane Cybernetic Chlorine Saving System]

[Concentrated, Stabilized 3" Wrapped Tablets]

[Stabilized chlorinating tablets for feeder and skimmer application.]

[3" Size]

[3" Tablets]

[Giant 3" Size]

[Wrapped]

[Sanitizer]

[Long lasting]

[Concentrated]

[Stabilized]
[3" Chlorinating Tablets]
[Slow Dissolving]
[For feeder and skimmer application.]
[Approximate weight of each tablet: "x" ounces] {"x" equals weight of tablet.}

*{Optional marketing statements that may be used with large tablets for **skimmer application** }*

[Concentrated, Stabilized 3" Wrapped Tablets]
[Stabilized chlorinating tablets for skimmer application.]
[For skimmer application.]
[3" Size]
[3" Tablets]
[Giant 3" Size]
[Wrapped]
[Sanitizer]
[Long lasting]
[Concentrated]
[Stabilized]
[3" Chlorinating Tablets]
[Slow Dissolving]
[Approximate weight of each tablet: "x" ounces] {"x" equals weight of tablet.}

*{Optional marketing statements that may be used with **sticks**}*

[Stabilized chlorinating sticks for skimmer application.]
[Stabilized chlorinating sticks for skimmer and chlorinator application.]
[Concentrated]
[Stabilized]
[Long lasting]
[For skimmer application.]
[For skimmer and chlorinator application.]
[Slow Dissolving]
[Slow Dissolving Chlorinating Sticks]
[Step 1] *{Sanitizers are marketed as step one of a three step program to treat swimming pool water.}*
[Professional Pool Care Commercial and Service Use] *{For use on larger size containers sold to pool service professionals}*
[Approximate weight of each stick: "x" ounces] {"x" equals weight of stick.}

*{Optional marketing statements that may be used with **floating canister containing chlorinating tablets**}*

[Concentrated]
[Stabilized]
[For convenient use in above ground and in-ground pools]
[Concentrated, Stabilized, Slow-Dissolving Sanitizer for convenient use in above ground and in-ground pools]

*{Optional marketing statements that may be used with **E-Z Clor Feeder Canister and Type E canister.**}*

[Concentrated]

[Stabilized]

[Chlorinating Tablets]

[Contains stabilized chlorinating tablets.]

[For E-Z Chlor® Chlorinators.]

[For use in erosion feeders]

*{Optional marketing statements that may be used with **BioLab Universal Canister}**}*

[For use in erosion feeders]

[For most flow-through or soaker type chlorinators.]

[Stabilized chlorinating tablets for most flow through or soaker type chlorinators.]

*{Optional marketing statements that may be used with **Alliance Universal Cartridge}**}*

[For most flow-through or soaker type chlorinators.]

[Stabilized chlorinating tablets for most flow through or soaker type chlorinators.]

[For use in erosion feeders]

*{Optional marketing statements that may be used with **winter floater}**}*

[For continuous winter chlorination.]

[FOR WHITE PLASTER POOLS ONLY.]

[Winter Floater]

{Directions for use on this label are divided into two sections on this label (a) recreational water treatment and (b) industrial and institutional applications.}

{The following sets of directions are for recreational water treatment.}

{Directions to be used for small tablets, Option A}

SWIMMING POOL SANITIZER

When used as directed, this product is an effective stabilized chlorinating disinfecting agent. This slow dissolving product releases sufficient chlorine to reduce the growth of harmful algae and micro-organisms in your pool.

DIRECTIONS FOR USE: It is a violation of Federal Law to use this product in a manner inconsistent with its labeling. Read entire label and use strictly in accordance with precautionary statements and directions.

Ensure all pool equipment is working properly. Clean or backwash filter following manufacturer's directions. Adjust pH to between 7.2-7.6. Add stabilizer to establish a minimum stabilizer level of 30-40 ppm to reduce the degradative effects of sunlight upon the chlorine residual. Superchlorinate the pool so that a chlorine residual of between 1-4 ppm is obtained. When using other products as outlined in directions for this product, always follow directions on those products.

WHEN USED IN AUTOMATIC CHLORINATORS AND FLOATERS:

This product can be used in feeding mechanisms such as automatic chlorinators and floaters as a maintenance treatment. Fill unit with this product and adjust the feeding mechanism to ensure a constant treatment level of 1-4 ppm available chlorine in the pool water. Normally, 1-2 ounces of this product per 10,000 gallons will be needed daily. Use a test kit or test strips to monitor chlorine levels and adjust the chlorine feed mechanism as needed. Check and refill chlorinator as needed. Do not let this product come in direct contact with vinyl liners or other bleachable surfaces as damage may occur.

Reentry into treated swimming pools is prohibited above levels of 4 ppm chlorine due to risk of body injury.

{Directions to be used for small tablets, Option B}

SWIMMING POOL SANITIZER

When used as directed, this product is an effective stabilized chlorinating product for disinfecting swimming pools. This slow dissolving product releases sufficient chlorine to reduce the growth of harmful algae and micro-organisms in your pool.

DIRECTIONS FOR USE It is a violation of Federal Law to use this product in a manner inconsistent with its labeling. Read entire label and use strictly in accordance with precautionary statements and directions.

BEFORE APPLYING PRODUCT:

First, ensure all pool equipment is working properly, then clean or backwash filter following manufacturer's directions. Next, adjust pH to between 7.2-7.6. Then add stabilizer to establish a minimum stabilizer level of 30-40 ppm to reduce the degradative effects of sunlight upon the chlorine residual. Next, superchlorinate the pool so that a chlorine residual of between 1-4 ppm is obtained. When using other products as outlined in directions for this product, always follow directions on those products.

WHEN USED IN AUTOMATIC CHLORINATORS AND FLOATERS:

This product can be used in feeding mechanisms such as automatic chlorinators and floaters as a maintenance treatment to provide a source of chlorine residual. First, fill the unit with this product, following safety precautions for this product and the unit. Then, adjust the feeding mechanism to assure a constant treatment level of 1-4 ppm available chlorine in the pool water. Normally, 1-2 ounces of this product per 10,000 gallons will be needed daily. Use a test kit or test strips to monitor chlorine levels and adjust the chlorine feed mechanism as needed. Check and refill chlorinator as needed. Do not let this product come in direct contact with vinyl liners or other bleachable surfaces as damage may occur.

Reentry into treated swimming pools is prohibited above levels of 4 ppm chlorine due to risk of body injury.

{Directions to be used for large tablets, Option A}

SWIMMING POOL SANITIZER

When used as directed, this product is an effective stabilized chlorinating disinfecting agent. This slow dissolving product releases sufficient chlorine to reduce the growth of harmful algae and micro-organisms in your pool.

DIRECTIONS FOR USE It is a violation of Federal Law to use this product in a manner inconsistent with its labeling. Read entire label and use strictly in accordance with precautionary statements and directions.

Ensure all pool equipment is working properly. Clean or backwash filter following manufacturer's directions. Adjust pH to between 7.2-7.6. Add stabilizer to establish a minimum stabilizer level of 30-40 ppm to reduce the degradative effects of sunlight upon the chlorine residual. Superchlorinate the pool so that a chlorine residual of between 1-4 ppm is obtained. When using other products as outlined in directions for this product, always follow directions on those products.

WHEN USED IN AUTOMATIC CHLORINATORS AND FLOATERS:

This product can be used in feeding mechanisms such as automatic chlorinators and floaters as a maintenance treatment. Fill unit with this product and adjust the feeding mechanism to ensure a constant treatment level of 1-4 ppm available chlorine in the pool water. Normally 1-2 ounces of this product per 10,000 gallons will be needed daily. Use a test kit or test strips to monitor chlorine levels and adjust the chlorine feed mechanism as needed. Check and refill chlorinator as needed. Do not let this product come in direct contact with vinyl liners or other bleachable surfaces as damage may occur.

WHEN USED IN SKIMMERS:

This product may be used in plastic skimmers only if skimmer and the piping between skimmer and pump are plastic. Do not add other chemicals through the skimmer when using this product in skimmer as an explosion or fire may result. Do not turn pump off for more than 8 hours in vinyl pools when [pucks are] [this product is] in skimmer. Initially add one of this product per 10,000 gallons of water. Add additional product as determined by a test kit or test strips to maintain chlorine residual of 1-4 ppm.

Reentry into treated swimming pools is prohibited above levels of 4 ppm chlorine due to risk of body injury.

{Directions to be used for large tablets, Option B}

SWIMMING POOL SANITIZER

When used as directed, this product is an effective stabilized chlorinating product for disinfecting swimming pools. This slow dissolving product releases sufficient chlorine to reduce the growth of harmful algae and micro-organisms in your pool.

DIRECTIONS FOR USE It is a violation of Federal Law to use this product in a manner inconsistent with its labeling. Read entire label and use strictly in accordance with precautionary statements and directions.

BEFORE APPLYING PRODUCT:

First, ensure all pool equipment is working properly, then clean or backwash filter following manufacturer's directions. Next, adjust pH to between 7.2-7.6. Then add stabilizer to establish a minimum stabilizer level of 30-40 ppm to reduce the degradative effects of sunlight upon the chlorine residual. Next, superchlorinate the pool so that a chlorine residual of between 1-4 ppm is obtained. When using other products as outlined in directions for this product, always follow directions on those products.

WHEN USED IN AUTOMATIC CHLORINATORS AND FLOATERS:

This product can be used in feeding mechanisms such as automatic chlorinators and floaters as a maintenance treatment to provide a source of chlorine residual. First, fill the unit with this product, following safety precautions for this product and the unit. Then, adjust the feeding mechanism to assure a constant treatment level of 1-4 ppm available chlorine in the pool water. Normally, 1-2 ounces of this product per 10,000 gallons will be needed daily. Use a test kit or test strips to monitor chlorine levels and adjust the chlorine feed mechanism as needed. Check and refill chlorinator as needed. Do not let this product come in direct contact with vinyl liners or other bleachable surfaces as damage may occur.

WHEN USED IN SKIMMERS:

SPECIAL NOTE: This product may be used in plastic skimmers **only** if skimmer and the piping between skimmer and pump are plastic. Do not add other chemicals through the skimmer when using this product in skimmer as an explosion or fire may result. Do not turn pump off for more than 8 hours in vinyl pools when [pucks are] [this product is] in skimmer.

First, add one of this product per 10,000 gallons of water. Next, on the following day, test the chlorine residual using test strips or a test kit. If the residual is less than 1 ppm, add additional product and/or increase the number of hours the pump operates each day. Adjust the amount of product added and the hours of pump operation to maintain a chlorine residual of 1 – 4 ppm. Replenish the product as necessary to maintain a chlorine residual of 1-4 ppm.

Reentry into treated swimming pools is prohibited above levels of 4 ppm chlorine due to risk of body injury.

{Directions to be used for large tablets used with the Hurricane Cybernetic Chlorine Saving System}

SWIMMING POOL SANITIZER FOR USE WITH HURRICANE CYBERNETIC CHLORINE SAVING SYSTEM

When used as directed, this product is an effective stabilized chlorinating product for disinfecting swimming pools. This slow dissolving product releases sufficient chlorine to reduce the growth of harmful algae and micro-organisms in your pool.

DIRECTIONS FOR USE It is a violation of Federal Law to use this product in a manner inconsistent with its labeling. Read entire label and use strictly in accordance with precautionary statements and directions.

BEFORE APPLYING PRODUCT:

First, ensure all pool equipment is working properly, then clean or backwash filter following manufacturer's directions. Next, adjust pH to between 7.2-7.6. Then add stabilizer to establish a minimum stabilizer level of 30-40 ppm to reduce the degradative effects of sunlight upon the chlorine residual. Next, superchlorinate the pool so that a chlorine residual of between 1-4 ppm is obtained. When using other products as outlined in directions for this product, always follow directions on those products.

PRODUCT APPLICATION:

This product is designed for use with the Hurricane Cybernetic Chlorine Saving System only. First, fill the unit with this product, following safety precautions for this product and the unit. Then, adjust the feeding mechanism to assure a constant treatment level of 1-4 ppm available chlorine in the pool water. Normally, 1-2 ounces of this product per 10,000 gallons will be needed daily. Use a test kit or test strips to monitor chlorine levels and adjust the chlorine feed mechanism as needed. Check and refill chlorinator as needed. Do not let this product come in direct contact with vinyl liners or other bleachable surfaces as damage may occur.

Reentry into treated swimming pools is prohibited above levels of 4 ppm chlorine due to risk of body injury.

*{Directions to be used for large tablets for **skimmer application**}*

SWIMMING POOL SANITIZER FOR SKIMMER APPLICATION

When used as directed, this product is an effective stabilized chlorinating product for disinfecting swimming pools. This slow dissolving product releases sufficient chlorine to reduce the growth of harmful algae and micro-organisms in your pool.

DIRECTIONS FOR USE It is a violation of Federal Law to use this product in a manner inconsistent with its labeling. Read entire label and use strictly in accordance with precautionary statements and directions.

BEFORE APPLYING PRODUCT:

First, ensure all pool equipment is working properly, then clean or backwash filter following manufacturer's directions. Next, adjust pH to between 7.2-7.6. Then add stabilizer to establish a minimum stabilizer level of 30-40 ppm to reduce the degradative effects of sunlight upon the chlorine residual. Next, superchlorinate the pool so that a chlorine residual of between 1-4 ppm is obtained. When using other products as outlined in directions for this product, always follow directions on those products.

SKIMMERS APPLICATION:

SPECIAL NOTE: This product may be used in plastic skimmers **only** if skimmer and the piping between skimmer and pump are plastic. Do not add other chemicals through the skimmer when using this product in skimmer as an explosion or fire may result. Do not turn pump off for more than 8 hours in vinyl pools when [pucks are] [this product is] in skimmer.

First, add one of this product per 10,000 gallons of water. Next, on the following day, test the chlorine residual using test strips or a test kit. To maintain a chlorine residual of 1-4 ppm, adjust the hours of pump operation (increase pump run time to raise chlorine level or decrease pump run time to lower chlorine level) and/or add additional product.

Reentry into treated swimming pools is prohibited above levels of 4 ppm chlorine due to risk of body injury.

{Directions to be used for sticks, Option A}

SWIMMING POOL SANITIZER

When used as directed, this product is an effective stabilized chlorinating disinfecting agent. This slow dissolving product releases sufficient chlorine to reduce the growth of harmful algae and micro-organisms in your pool.

DIRECTIONS FOR USE: It is a violation of Federal Law to use this product in a manner inconsistent with its labeling. Read entire label and use strictly in accordance with precautionary statements and directions.

Ensure all pool equipment is working properly. Clean or backwash filter following manufacturer's directions. Adjust pH to between 7.2-7.6. Add stabilizer to establish a minimum stabilizer level of 30-40 ppm to reduce the degradative effects of sunlight upon the chlorine residual. Superchlorinate the pool so that a chlorine residual of between 1-4 ppm is obtained. When using other products as outlined in directions for this product, always follow directions on those products.

WHEN USED IN AUTOMATIC CHLORINATORS AND FLOATERS:

This product can be used in feeding mechanisms such as automatic chlorinators and floaters as a maintenance treatment. Fill unit with this product and adjust the feeding mechanism to assure a constant treatment level of 1-4 ppm available chlorine in the pool water. Normally 1-2 ounces of this product per 10,000 gallons will be needed daily. Use a test kit or test strips to monitor chlorine levels and adjust the chlorine feed mechanism as needed. Check and refill chlorinator as needed. Do not let this product come in direct contact with vinyl liners or other bleachable surfaces as damage may occur.

WHEN USED IN SKIMMERS:

This product may be used in plastic skimmers **only** if skimmer and the piping between skimmer and pump are plastic. Do not add other chemicals through the skimmer when using this product in skimmer as an explosion or fire may result. Do not turn pump off for more than 8 hours in vinyl pools when [sticks are] [this product is] in skimmer. Initially add one of this product per 10,000 gallons of water. Add additional product as determined by a test kit or test strips to maintain chlorine residual of 1-4 ppm.

Reentry into treated swimming pools is prohibited above levels of 4 ppm chlorine due to risk of body injury.

{Directions to be used for sticks, Option B}

SWIMMING POOL SANITIZER

When used as directed, this product is an effective stabilized chlorinating product for disinfecting swimming pools. This slow dissolving product releases sufficient chlorine to reduce the growth of harmful algae and micro-organisms in your pool.

DIRECTIONS FOR USE It is a violation of Federal Law to use this product in a manner inconsistent with its labeling. Read entire label and use strictly in accordance with precautionary statements and directions.

BEFORE APPLYING PRODUCT:

First, ensure all pool equipment is working properly, then clean or backwash filter following manufacturer's directions. Next, adjust pH to between 7.2-7.6. Then add stabilizer to establish a minimum stabilizer level of 30-40 ppm to reduce the degradative effects of sunlight upon the chlorine residual. Next, superchlorinate the pool so that a chlorine residual of between 1-4 ppm is obtained. When using other products as outlined in directions for this product, always follow directions on those products.

WHEN USED IN AUTOMATIC CHLORINATORS AND FLOATERS:

This product can be used in feeding mechanisms such as automatic chlorinators and floaters as a maintenance treatment to provide a source of chlorine residual. First, fill the unit with this product, following safety precautions for this product and the unit. Then, adjust the feeding mechanism to assure a constant treatment level of 1-4 ppm available chlorine in the pool water. Normally 1-2 ounces of this product per 10,000 gallons will be needed daily. Use a test kit or test strips to monitor chlorine levels and adjust the chlorine feed mechanism as needed. Check and refill chlorinator as needed. Do not let this product come in direct contact with vinyl liners or other bleachable surfaces as damage may occur.

WHEN USED IN SKIMMERS:

SPECIAL NOTE: This product may be used in plastic skimmers **only** if skimmer and the piping between skimmer and pump are plastic. Do not add other chemicals through the skimmer when using this product in skimmer as an explosion or fire may result. Do not turn pump off for more than 8 hours in vinyl pools when [sticks are] [this product is] in skimmer.

First, add one of this product per 10,000 gallons of water. Next, on the following day, test the chlorine residual using test strips or a test kit. If the residual is less than 1 ppm, add additional product and/or increase the number of hours the pump operates each day. Adjust the amount of product added and the hours of pump operation to maintain a chlorine residual of 1 – 4 ppm. Replenish the product as necessary to maintain a chlorine residual of 1-4 ppm.

Reentry into treated swimming pools is prohibited above levels of 4 ppm chlorine due to risk of body injury.

{Directions to be used for floating canister containing chlorinating tablets, Option A}

SWIMMING POOL SANITIZER

This product regulates the chlorine that sanitizes your pool. When used as directed, this product controls algae and micro-organisms in your pool for several weeks.

DIRECTIONS FOR USE: It is a violation of Federal Law to use this product in a manner inconsistent with its labeling. Read entire label and use strictly in accordance with precautionary statements and directions.

Ensure all pool equipment is working properly. Clean or backwash filter following manufacturer's directions. Adjust pH to between 7.2-7.6. Add stabilizer to establish a minimum stabilizer level of 30-40 ppm to reduce the degradative effects of sunlight upon the chlorine residual. Superchlorinate the

pool so that a chlorine residual of between 1-4 ppm is obtained. When using other products as outlined in directions for this product, always follow directions on those products.

Floater is marked in volume increments from 5,000 to 40,000 gallons. To use, cut off all feeder nubs on both sides of cartridge up to and including the one corresponding to your pool's size. If pool is between sizes marked, open next higher nubs. Use a sharp knife and cut in direction away from your body and limbs. Make certain holes are wide open to allow water to flow through freely.

Place floater with open holes in center of the pool. After 24 hours check residual chlorine level with a test kit or test strips. If residual chlorine level is below 1.0 ppm cut-off one additional nub until chlorine stabilizes at 1-4 ppm. If the residual chlorine is too high, seal one set of holes with waterproof plastic tape. When ready for replacement, this product will float on its side.

SPECIAL NOTE: Do not completely submerge floater, allow to sink or allow holes to become clogged. This could trap excess amount of chlorine gas possibly resulting in a violent explosion. Do not attempt to open or refill this product.

Reentry into treated swimming pools is prohibited above levels of 4 ppm chlorine due to risk of body injury.

{Directions to be used for floating canister containing chlorinating tablets, Option B}

SWIMMING POOL SANITIZER

This product regulates the chlorine that sanitizes your pool. When used as directed, this product controls algae and micro-organisms in your pool for several weeks.

DIRECTIONS FOR USE: It is a violation of Federal Law to use this product in a manner inconsistent with its labeling. Read entire label and use strictly in accordance with precautionary statements and directions.

BEFORE APPLYING PRODUCT:

First, ensure all pool equipment is working properly, then clean or backwash filter following manufacturer's directions. Next, adjust pH to between 7.2-7.6. Then add stabilizer to establish a minimum stabilizer level of 30-40 ppm to reduce the degradative effects of sunlight upon the chlorine residual. Next, superchlorinate the pool so that a chlorine residual of between 1-4 ppm is obtained. When using other products as outlined in directions for this product, always follow directions on those products.

Floater is marked in volume increments from 5,000 to 40,000 gallons.

First, cut off all feeder nubs on both sides of cartridge up to and including the one corresponding to your pool's volume. If pool is between sizes marked, open next higher set of nubs. Use a sharp knife and cut in direction away from your body and limbs. Make certain holes are wide open to allow water to flow through freely.

Next, place floater with open holes in center of the pool. After 24 hours check residual chlorine level with a test kit or test strips. If residual chlorine level is below 1.0 ppm cut-off one additional set of

nubs until chlorine stabilizes at 1-4 ppm. If the residual chlorine is too high, seal one set of holes with waterproof plastic tape. NOTE: When ready for replacement, this product will float on its side.

SPECIAL NOTE: Do not completely submerge floater, allow to sink or allow holes to become clogged. This could trap excess amount of chlorine gas possibly resulting in a violent explosion. Do not attempt to open or refill this product.

Reentry into treated swimming pools is prohibited above levels of 4 ppm chlorine due to risk of body injury.

{Directions for E-Z Clor Feeder Canister and Type E Canister, Option A}

SWIMMING POOL SANITIZER FOR USE IN E-Z CLOR® FEEDER

This product, when used as directed, automatically releases the correct amount of chlorine to sanitize your pool. This reduces the growth of harmful algae and micro-organisms in your pool for several weeks. This product is not a floating device and is only to be used with automatic chlorinating systems such as a refill for automatic chlorinating systems using the Type "E" refill cartridge.

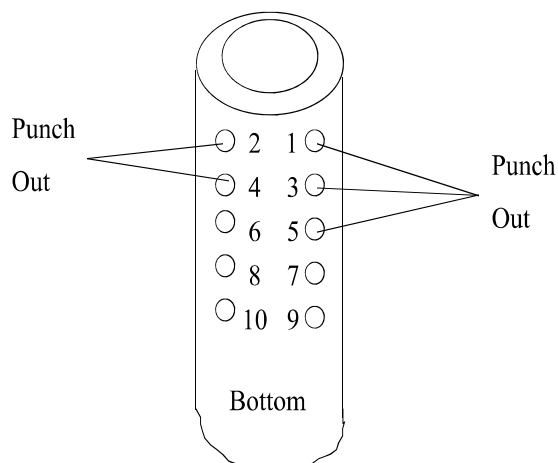
DIRECTIONS FOR USE: It is a violation of federal law to use this product in any manner inconsistent with its labeling. Read entire label and use strictly in accordance with precautionary statements and directions.

Ensure all pool equipment is working properly. Clean or backwash filter following manufacturer's directions. Adjust pH to between 7.2-7.6. Add stabilizer to establish a minimum stabilizer level of 30-40 ppm to reduce the degradative effects of sunlight upon the chlorine residual. Superchlorinate the pool so that a chlorine residual of between 1-4 ppm is obtained. When using other products as outlined in directions for this product, always follow directions on those products. Do not attempt to open or refill this cartridge.

1. Select a large nail, sharp knife or similar tool to punch out dimples per step #2. Place cartridge on a solid surface and work carefully to avoid injury.
2. Punch out appropriate dimples on both of the upper sides of cartridge according to the chart below based on the size of your pool:

Gallons of pool water:	Dimples to punch:
5,000	1
10,000	1, 2, & 3
15,000	1, 2, 3, 4, & 5
20,000	1, 2, 3, 4, 5, 6, & 7
30,000	1, 2, 3, 4, 5, 6, 7, 8, & 9

Example: 15,000 gallon pool. Punch out dimples numbered 1, 2, 3, 4 and 5. See diagram:



3. Punch out all eight (8) clear dots on top of cap.

4. Turn cartridge upside down and place into chlorinator. Follow equipment manufacturer's directions for installation of the Type "E" cartridge.

5. After the cartridge has been in use for 24 hours, check the chlorine level of the water with a test kit or test strips. The correct chlorine level range is 1-4 ppm. If level is below 1 ppm, punch out next higher number. If level is above 4 ppm, cover highest hole with water proof tape. Make additional adjustments as required to maintain a 1-4 ppm chlorine residual.

Reentry into treated swimming pools is prohibited above levels of 4 ppm chlorine due to risk of body injury.

{Directions for E-Z Clor Feeder Canister and Type E Canister, Option B}

SWIMMING POOL SANITIZER FOR USE IN E-Z CLOR® FEEDER

This product, when used as directed, automatically releases the correct amount of chlorine to sanitize your pool. This reduces the growth of harmful algae and micro-organisms in your pool for several weeks. This product is not a floating device and is only to be used with automatic chlorinating systems such as a refill for automatic chlorinating systems using the Type "E" refill cartridge.

DIRECTIONS FOR USE: It is a violation of federal law to use this product in any manner inconsistent with its labeling. Read entire label and use strictly in accordance with precautionary statements and directions.

BEFORE APPLYING PRODUCT:

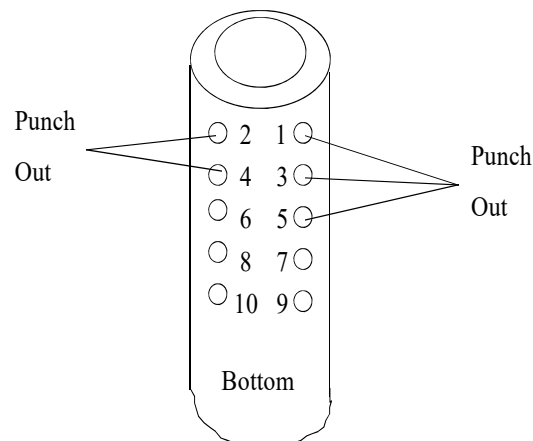
First, ensure all pool equipment is working properly, then clean or backwash filter following manufacturer's directions. Next adjust pH to between 7.2-7.6. Then add stabilizer to establish a minimum stabilizer level of 30-40 ppm to reduce the degradative effects of sunlight upon the chlorine residual. Next, superchlorinate the pool so that a chlorine residual of between 1-4 ppm is obtained. When using other products as outlined in directions for this product, always follow directions on those products.

Note: Do not attempt to open or refill this cartridge.

1. Select a large nail, sharp knife or similar tool to punch out dimples per step #2. Place cartridge on a solid surface and work carefully to avoid injury.
2. Punch out appropriate dimples on both of the upper sides of cartridge according to the chart below based on the volume of your pool:

Gallons of pool water:	Dimples to punch:
5,000	1
10,000	1, 2, & 3
15,000	1, 2, 3, 4, & 5
20,000	1, 2, 3, 4, 5, 6, & 7
30,000	1, 2, 3, 4, 5, 6, 7, 8, & 9

Example: 15,000 gallon pool. Punch out dimples numbered 1, 2, 3, 4 and 5. See diagram:



3. Punch out all eight (8) clear dots on top of cap.
4. Turn cartridge upside down and place into chlorinator. Follow equipment manufacturer's directions for installation of the Type "E" cartridge.
5. After the cartridge has been in use for 24 hours, check the chlorine level of the water with a test kit or test strips. The correct chlorine level range is 1-4 ppm. If level is below 1 ppm, punch out next higher number. If level is above 4 ppm, cover highest hole with water proof tape. Make additional adjustments as required to maintain a 1-4 ppm chlorine residual.

Reentry into treated swimming pools is prohibited above levels of 4 ppm chlorine due to risk of body injury.

SWIMMING POOL SANITIZER FOR USE IN E-Z CLOR, CLOR-TROL 1200, FOXAMATIC OR ANTHONY T-120 AUTOMATIC CHLORINATORS

This product, when used as directed, continuously releases the correct amount of chlorine to sanitize your pool. This reduces the growth of harmful algae and micro-organisms in your pool for several weeks. This product is to be used with automatic chlorinating systems or as a floater.

DIRECTIONS FOR USE: It is a violation of federal law to use this product in any manner inconsistent with its labeling. Read entire label and use strictly in accordance with precautionary statements and directions.

Ensure all pool equipment is working properly. Clean or backwash filter following manufacturer's directions. Adjust pH to between 7.2-7.6. Add stabilizer to establish a minimum stabilizer level of 30-40 ppm to reduce the degradative effects of sunlight upon the chlorine residual. Superchlorinate the pool so that a chlorine residual of between 1-4 ppm is obtained. When using other products as outlined in directions for this product, always follow directions on those products.

ALL CHLORINATORS EXCEPT CLOR-TROL 1200 and ANTHONY T-120.

Unscrew cap and remove cap liner exposing slits. Place cap liner in a dry, clean empty plastic bag. Save cap liner for possible use of the canister as a vacation floater. Screw cap back on canister. Punch out numbered hole(s) in canister corresponding to pool size as indicated below. Make sure holes are punched out completely. Place canister on a solid surface and work carefully to avoid injury.

Pool Capacity in Gallons	Open Hole(s) Number.
12,000.....	1
15,000.....	1, 2
18,000.....	1, 2, 3
21,000.....	1, 2, 3, 4
24,000.....	1, 2, 3, 4, 5

For pools of intermediate size, open hole for next larger capacity. For pools larger than 24,000 gallons, use 2 (or more) cartridges and divide the number of holes to open equally among them. (Example: For 42,000 gallon pool, use 2 cartridges and open holes #1, 2, 3, & 4 on each.) Place canister or canisters in chlorinator and wait for 24 hours. Then check chlorine level with test kit or test strips. Correct range should be 1.0-4.0 ppm. If residual level is above 4.0 ppm, wait 24 hours and recheck. If residual is still above 4.0 ppm at this time, use adjustment of chlorinator to reduce expected output from chlorinator per the chlorinator manufacturer directions. If no adjustment present on chlorinator, reduce the number of hours that circulation pump operates per day, but to no less than 8 hours per day. If level is below 1 ppm, open an additional hole on the canister.

CLOR-TROL 1200 AND ANTHONY T-120 CHLORINATORS

Unscrew cap and remove cap liner exposing slits. Place cap liner in a dry, clean empty plastic bag. Save cap liner for possible use of the canister as a vacation floater. Screw cap back on canister. Punch out only hole numbered "A" in canister. Place canister on a solid surface and work carefully to avoid injury. Place canister or canisters in chlorinator and wait for 24 hours. Then check chlorine level with test kit or test strips. Correct range should be 1.0-4.0 ppm. If residual level is above 4.0 ppm, wait 24 hours and recheck. Adjust the chlorine output by raising or lowering the canister in the chlorinator using the stair step treads provided.

CHLORINATOR CANISTER AS VACATION FLOATER

In white plaster pools only, the chlorinator canister can be used to treat your pool when away on a trip without leaving the pump running. This canister flips on its side when empty. Remove canister from chlorinator and unscrew cap and replace cap liner. Punch holes #1 and #2 if not already punched. Place canister in center of pool. Do not completely submerge floater, allow to sink or allow holes to become clogged. This could trap excess amount of chlorine gas possibly resulting in a violent explosion. Do not attempt to open or refill this product. This canister flips on its side when empty.

Reentry into treated swimming pools is prohibited above levels of 4 ppm chlorine due to risk of body injury.

{Directions for BioLab Universal Canister, Option B}

SWIMMING POOL SANITIZER FOR USE IN E-Z CLOR, CLOR-TROL 1200, FOXAMATIC OR ANTHONY T-120 AUTOMATIC CHLORINATORS

This product, when used as directed, continuously releases the correct amount of chlorine to sanitize your pool. This reduces the growth of harmful algae and micro-organisms in your pool for several weeks. This product is to be used with automatic chlorinating systems or as a floater.

DIRECTIONS FOR USE: It is a violation of federal law to use this product in any manner inconsistent with its labeling. Read entire label and use strictly in accordance with precautionary statements and directions.

BEFORE APPLYING PRODUCT:

First, ensure all pool equipment is working properly, then clean or backwash filter following manufacturer's directions. Next, adjust pH to between 7.2-7.6. Then add stabilizer to establish a minimum stabilizer level of 30-40 ppm to reduce the degradative effects of sunlight upon the chlorine residual. Next, superchlorinate the pool so that a chlorine residual of between 1-4 ppm is obtained. When using other products as outlined in directions for this product, always follow directions on those products.

ALL CHLORINATORS EXCEPT CLOR-TROL 1200 and ANTHONY T-120.

First, unscrew cap and remove cap liner exposing slits. Place cap liner in a dry, clean empty plastic bag. Save cap liner for possible use of the canister as a vacation floater. Then, screw cap back on canister. Next, punch out numbered hole(s) in canister corresponding to pool size as indicated below. Make sure holes are punched out completely. Place canister on a solid surface and work carefully to avoid injury.

Pool Capacity in Gallons	Open Hole(s) Number.
12,000.....	1
15,000.....	1, 2
18,000.....	1, 2, 3
21,000.....	1, 2, 3, 4
24,000.....	1, 2, 3, 4, 5

For pools of intermediate size, open hole for next larger capacity. For pools larger than 24,000 gallons, use 2 (or more) cartridges and divide the number of holes to open equally among them. (Example: For 42,000 gallon pool, use 2 cartridges and open holes #1, 2, 3, & 4 on each.)

Next, place canister or canisters in chlorinator and wait for 24 hours. Then check chlorine level with test kit or test strips. Correct range should be 1.0-4.0 ppm. If residual level is above 4.0 ppm, wait 24 hours and recheck. If residual is still above 4.0 ppm at this time, use adjustment of chlorinator to reduce expected output from chlorinator per the chlorinator manufacturer directions. If no adjustment present on chlorinator, reduce the number of hours that circulation pump operates per day, but to no less than 8 hours per day. If level is below 1 ppm, open an additional hole on the canister.

CLOR-TROL 1200 AND ANTHONY T-120 CHLORINATORS

First, unscrew cap and remove cap liner exposing slits. Place cap liner in a dry, clean empty plastic bag. Save cap liner for possible use of the canister as a vacation floater. Then, screw cap back on canister. Next, punch out only hole numbered "A" in canister. Place canister on a solid surface and work carefully to avoid injury. Then, place canister or canisters in chlorinator and wait for 24 hours. Then check chlorine level with test kit or test strips. Correct range should be 1.0-4.0 ppm. If residual level is above 4.0 ppm, wait 24 hours and recheck. Adjust the chlorine output by raising or lowering the canister in the chlorinator using the stair step treads provided.

CHLORINATOR CANISTER AS VACATION FLOATER

In white plaster pools only, the chlorinator canister can be used to treat your pool when away on a trip without leaving the pump running. First, remove canister from chlorinator and unscrew cap and replace cap liner. Next, punch holes #1 and #2 if not already punched. Place canister on a solid surface and work carefully to avoid injury. Next, place canister in center of pool. Do not completely submerge floater, allow to sink or allow holes to become clogged. This could trap excess amount of chlorine gas possibly resulting in a violent explosion. Do not attempt to open or refill this product. This canister flips on its side when empty.

Reentry into treated swimming pools is prohibited above levels of 4 ppm chlorine due to risk of body injury.

{Directions to be used for Alliance Universal Cartridge}

SWIMMING POOL SANITIZER FOR USE IN E-Z® CLOR, GUARDEX OR ANTHONY FEEDERS

This product, when used as directed, continuously releases the correct amount of chlorine to sanitize your pool. This reduces the growth of harmful algae and micro-organisms in your pool for several weeks.

DIRECTIONS FOR USE

REMOVE AND SAVE FOR FUTURE REFERENCE

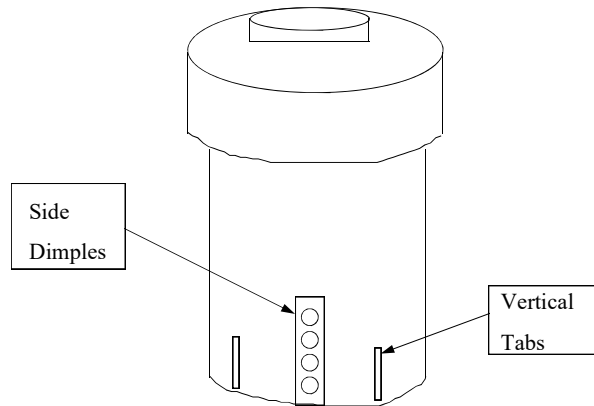
It is a violation of federal law to use this product in any manner inconsistent with its labeling. Read entire label and use strictly in accordance with precautionary statements and directions.

FOR USE IN E-Z CLOR FEEDERS:

1. Adjust pool water to 7.2 to 7.6 pH level as determined by a test kit.
2. If the pool has not been stabilized, add stabilizer (cyanuric acid) according to instructions on label.
3. Select the alphabetically coded dimple on the lower side of the cartridge according to the gallon capacity of your pool as determined by the chart below:

Approx. Gallons (In Thousands)	5	10	15	25	35
Dimple Letter	A	B	C	D	E

4. Using a knife, cut a 1/4" diameter hole in the side dimple selected from the chart above. Place canister on a solid surface and work carefully to avoid injury. (See diagram below)
5. Also cut away completely the three vertical elongated tabs on the lower sides of the cartridge. Place canister on a solid surface and work carefully to avoid injury. (See diagram below)



6. Place the cartridge in the feeder.
7. After the cartridge has been in use for 24 hours, check the chlorine residual level. Chlorine residual should be checked frequently and always maintained between 1.0 and 4.0 ppm.

If the residual is below 1.0 ppm, remove the cartridge and cover the alphabetically coded hole with black electrical tape. Then, cut a new 1/4" diameter hole in the next higher dimple (e.g. A to B). Reinsert the cartridge and test residual again after another 24 hours.

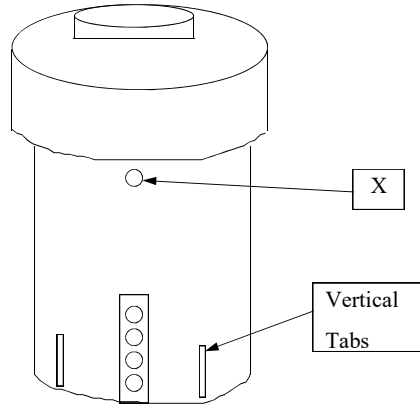
If the residual is above 4.0 ppm, remove the cartridge and cover the alphabetically coded hole with black electrical tape. Then, cut a new 1/4" diameter hole in the next lower dimple (e.g. E to D). Reinsert the cartridge and test residual again after another 24 hours.

FOR USE IN GUARDEX OR ANTHONY FEEDERS:

1. Adjust pool water to 7.2 to 7.6 pH level as determined by a test kit.
2. If the pool has not been stabilized, add stabilizer (cyanuric acid) according to instructions on label.

3. Using a knife, cut a 1/4" diameter hole in the dimple indicated by the letter "X" on the side of the cartridge where the wide and narrow portions of the cartridge converge. Place canister on a solid surface and work carefully to avoid injury. (See diagram below)

4. Also cut away completely the three vertical elongated tabs on the lower sides of the cartridge. Place canister on a solid surface and work carefully to avoid injury. (See diagram below)



5. To make the initial height setting of the cartridge in the feeder, select the number on the graduated scale on the side of the cartridge according to the gallon capacity of your pool as determined by the chart below:

Approx. Gallons (In Thousands)	10	15	20	25	30	35
Number	1	2	3	4	5	6

6. Insert the cartridge into the feeder until the top of the feeder lip is aligned with the number on the graduated scale selected from the chart above. Then rotate the cartridge clockwise in the feeder until it stops - about a quarter of a revolution.

7. After the cartridge has been in use for 24 hours, check the chlorine residual level. Chlorine residual should be checked frequently and always maintained between 1.0 and 4.0 ppm.

If the residual level is below 1.0 ppm, readjust the height setting to the next higher number on the graduated scale (e.g. 1 to 2). The cartridge will now be positioned deeper in the feeder.

If the residual level is above 4.0 ppm, readjust the height setting to the next lower number on the graduated scale (e.g. 6 to 5). The cartridge will now be positioned higher in the feeder.

NOTE: The pH of the slow dissolving tablet is on the acid side and will tend to reduce the pH and alkalinity of the pool water. Proper pH should be maintained between 7.2 and 7.6 as determined by a test kit or test strips and by periodic additions of sodium carbonate or sodium bicarbonate.

Reentry into treated swimming pools is prohibited above levels of 4 ppm chlorine due to risk of body injury.

{Directions to be used for winter floater}

WINTER SWIMMING POOL TREATMENT

When used as directed, [BioGuard Winter Floater WP] [this product] provides a source of effective disinfecting agent for winterized pools. **Do not** allow swimming in pool while this product is in use.

DIRECTIONS FOR USE

It is a violation of federal law to use this product in any manner inconsistent with its labeling. Read entire label and use strictly in accordance with precautionary statements and directions.

THIS PRODUCT IS FOR USE IN WHITE PLASTER POOLS ONLY AND SHOULD BE USED AS A SUPPLEMENTAL SOURCE OF SANITIZER ONLY FOR WINTERIZATION PURPOSES.

Before using this product the pool water should be properly balanced and appropriately treated with winterizing products appropriate for your geographic area. Consult with your [BioGuard Dealer] [dealer] for proper winterization procedures.

After winterization procedures are complete, place [the BioGuard Winter Floater WP] [this product] into the center of the pool in the deep end of the pool. The bag containing the chlorinating sticks will hang below the surface of the water and be kept afloat. Use one (1) [BioGuard Winter Floater WP] [of this product] for each 10,000 gallons of pool water. This product may be used with mesh or solid covers.

Additional applications may be needed and are recommended in the following circumstances:

A. If the pool is uncovered and the water temperature is above 60° F., 30 to 45 days following initial application, apply one (1) [BioGuard Winter Floater WP] [of this product] for each 10,000 gallons. Place this product into the center of the pool at the deep end of the pool. Monitor pool water temperature and reapply every 30 to 45 days when water temperature is above 60° F.

B. If the cover was placed on the pool before the water temperature was below 60° F., 30 to 45 days after initial application, apply one (1) [BioGuard Winter Floater WP] [of this product] for each 10,000 gallons. Pull the cover back from the deep end of the pool an adequate distance to allow this product to be placed away from the sides of the pool. Replace the cover and secure properly.

DISPOSAL OF PACKAGE AFTER USE:

WEAR GOGGLES AND RUBBER GLOVES WHEN REMOVING CARTRIDGES FROM THE POOL.

When the pool is opened in the spring, empty [BioGuard Winter Floater WP] [floater] should be drained and disposed of by placing into trash collection. If any undissolved product remains in the floater at the time of pool opening, remove the floater from the pool and drain off any water inside the bag area into the pool. Open the bag and remove the solid product from the bag. Place the product into an empty pool skimmer basket. Operate the circulation system of the pool at least 12 hours per day until the product has completely dissolved. **DO NOT PLACE THIS PRODUCT INTO A SKIMMER WHERE OTHER PRODUCTS ARE PRESENT. DO NOT PLACE OTHER**

PRODUCTS INTO A SKIMMER WHERE THIS PRODUCT IS PRESENT. Dispose of the floatation material and plastic bag by placing into trash collection.

NOTE: THE FLOATATION MATERIAL CONTAINED IN THIS PRODUCT ALONG WITH THE PLASTIC BAG SHOULD BE DISPOSED OF BY PLACING THEM INTO TRASH COLLECTION.

Reentry into treated swimming pools is prohibited above levels of 4 ppm chlorine due to risk of body injury.

*{The following directions are for use on **industrial and institutional products**. One or more use patterns may appear on a single end use label.}*

{This Directions for Use statement will be used when directions for industrial and institutional uses appear on the label.}

DIRECTIONS FOR USE:

It is a violation of federal law to use this product in any manner inconsistent with its labeling. Read entire label and use strictly in accordance with precautionary statements and directions.

AIR WASHER SYSTEMS

This product may be used to control the growth of slime-forming bacteria, fungi, and algae.

Product Application

If the system noticeably fouled, drain, clean and refill prior to initial treatment. Add 1.4 to 4 ounces of this product per 10,000 gallons of water to achieve a chlorine residual level of 1 to 3 ppm as needed to maintain control of the system.

SEWAGE SYSTEMS

When used as directed, this product effectively controls algal, bacterial, and fungal slime in sewage systems including leach fields, tank lines, lagoons, and sewage effluent water, sewers, sewage effluent water, cesspools, septic tanks, sewage settling ponds, sludge beds, storm drains, and street culverts.

Product Application

The amount of this product necessary to disinfect depends on the concentration and conditions of the final effluent. Raw sewage should be treated before it has reached the septic state. Approximately 30% of the chlorine demand of sewage is due to settled solids, 30% to dissolved solids and 40% to suspended and colloidal solids. Disinfection should be based on laboratory checks, including bacteriological checks, as a safeguard. Generally, disinfection can be achieved when the chlorine residual (after 15 to 30 minutes contact time) is between 0.6 and 1.0 ppm. Residual chlorine and time of contact can be used as the determining factors to assure disinfection. These factors can be used after experience with different types of treated sewage is sufficient to establish a relationship between the residual chlorine content of the final effluent and the contact time necessary to ensure the desired bacteriological results. Bacteriological testing should be conducted periodically to ensure that conditions have not changed. Treat sewage near the influent detention basin. The feed rate for this product must be adjusted to the higher dosages usually required for sewage practices. Where temporary disinfection prior to dilution in a body of water is desired, the following will generally suffice: Raw sewage - 10 to 30 ppm available chlorine; Primary treated sewage - 5 to 20 ppm available chlorine; Sewage after primary and secondary treatment (or secondary treatment alone) - 2 to 5 ppm. Confirm the efficacy of these levels using bacteriological testing in your system.

PASTEURIZERS/WARMER/CANNERY COOLING WATER SYSTEMS

When used as directed, this product effectively controls algal, bacterial, and fungal slime in brewery pasteurizer water, brewery processing water, brewery warmer water, cannery cooling canal water, cannery package warmers, cannery pasteurizer water, and retort cooling water.

Product Application

If the system is noticeably fouled, drain, clean and refill prior to initial treatment. Add 1.4 to 4 ounces of this product per 10,000 gallons of water to achieve a chlorine residual level of 1 to 3 ppm as needed to maintain control of the system.

ONCE-THROUGH COOLING WATER SYSTEMS

When used as directed, this product effectively controls algal, bacterial and fungal slime in open or closed-cycle, fresh or salt water, once-through cooling systems. Add this product to the system inlet water or before any other contaminated area in the system.

Product Application

Add 1.4 to 4 ounces of this product per 10,000 gallons of water to achieve a chlorine residual level of 1 to 3 ppm as needed to maintain control of the system.

RECIRCULATING COOLING WATER SYSTEMS

When used as directed, this product is effective as a cooling tower algicide, slimicide, and bactericide. Severely fouled towers should be cleaned prior to treatment for best and most rapid results. Lightly fouled systems may be treated without precleaning. Chlorinating requirements vary with percent of time tower is in use, type of tower, air and water temperatures, and contamination in and entering into the water. For these reasons, precise directions cannot be given. The operator will require some experience with treating the tower to establish the optimum treatment schedule and the amounts of this product required.

Application Methods

This product may be applied to the tower by use of a suitable erosion chlorinator with an adjustable flow control or by suspending a dissolving basket in the sump. Chlorination levels are controlled by changing the rate of water flow through the erosion chlorinator or by increasing or decreasing the number of tablets placed in the dissolving basket. During periods when no chlorine is wanted, the water flow through the erosion chlorinator is stopped. The dissolving basket is simply removed and suspended above the water in the sump. Use a DPD free chlorine test kit to measure available chlorine concentrations in the water.

Product Application

INITIAL TREATMENT: Place in the chlorinator, dissolving basket or sump, 1 ounce of this product for each 1,000 gallons of water in the system. Tablets should be placed in an area of constant water flow. Open flow control on erosion chlorinator to maximum until a 1.0 ppm chlorine residual is obtained. Adjust flow or add tablets to maintain chlorine at 1-2 ppm until fouling is gone.

CONTINUOUS TREATMENT: Adjust flow through erosion chlorinator to maintain available chlorine reading at 0.5 to 1.0 ppm or keep the proper number of tablets in the dissolving basket or sump to maintain a 0.5 to 1.0 ppm available chlorine reading.

INTERMITTENT TREATMENT: This is most easily done with an erosion chlorinator. One to three times daily, establish a 1.0 ppm available chlorine reading in the recirculating water and maintain that level of available chlorine for one hour.

Quaternary ammonium biocides will often complement the action of this product as they tend to disperse slime masses, which available chlorine can then penetrate and kill. A quaternary biocide slug fed into a tower on an occasional basis will help prevent the development of resistant organisms and will tend to keep surfaces cleaner.

WASTEWATER TREATMENT SYSTEMS

When used as directed, this product effectively controls algal, bacterial and fungal slime and offers rapid disinfection of primary, secondary and tertiary wastewater treatment systems.

Product Application

Add 1.4 to 4 ounces of this product per 10,000 gallons to maintain 1 to 3 ppm chlorine residual at the injection point in the disinfection contact chamber. Adjust the dosage to achieve disinfection and minimize the halogen concentration at the exit of the contact chamber.

PULP AND PAPER MILLS

When used as directed this product effectively controls algal, bacterial, and fungal slime in pulp and paper mill fresh and sea water influent water systems; cooling water systems, wastewater treatment systems, service water systems, white water systems, and other process water.

Product Application

TREATMENT BY SYSTEM VOLUME When a system is noticeably fouled: add 0.7 to 7 ounces of this product to 1,000 gallons of water in the system. When biological control is evident: add 0.7 to 5 ounces of this product to 1,000 gallons of water in the system.

TREATMENT BY RESIDUAL METHOD Add sufficient amount of this product to maintain a measured residual up to 3 ppm as chlorine. Once biological control is evident, the use of this product normally can be reduced to something less than 1 ppm as chlorine.

{Optional Statement}

[An alternate method of calculating the appropriate level of this product is to estimate the paper mill's daily production, then add, over a 24 hour period, up to 255 grams (9 ounces) per dry ton of paper produced over a twenty-four (24) hour period. Test for chlorine to verify the level of 3 ppm is not being exceeded.]

TRANSPORTATION CLEANING

When used as directed, this product effectively control algal, bacterial and fungal slime in automobile wash water systems. Badly fouled systems should be cleaned before treatment is begun.

Product Application

If a heavily fouled system exists and physical cleaning is not possible, add sufficient amount of this product to water to maintain a measured residual of 2.5 - 10 ppm available chlorine (0.35 to 1.4 ounces of this product per 1,000 gallons of water) for two weeks. Then reduce to maintenance levels. Effective control under normal circumstances is maintained by adding (0.18 to 0.7 ounces/1,000 gallons) of this product to water to maintain 1.25 - 5 ppm available chlorine.

TOILET BOWL WATER SANITIZER AND CLEANER

Keeps bowl fresh and clean. Fights stain build-up. Consistent release formula. Kills 99.9% of all odor-causing germs in the bowl water. Continuous real bleach cleaning and deodorizing. Tablet wrapped for skin protection. Child Resistant Package. Harmless to plumbing or septic tanks. Phosphate Free. Contains No Dyes. Safe for Colored Toilets.

Product Application

For best results, start with a clean bowl. Remove toilet tank top. Peel blister from card OR using scissors cut open blister. **DO NOT REMOVE PROTECTIVE WRAPPER** from tablet -- it will dissolve in tank. Flush toilet. When water level is low and valve is closed, drop tablet in tank near the right sidewall and not near the water inlet. (See diagram). No removal necessary. When tablet is gone, add a new tablet to your tank. This product should be used in toilets that are flushed daily.

{Storage and Disposal instructions for products with recreational use patterns, e.g. swimming pool & spa products}

[STORAGE AND DISPOSAL: Keep this product dry in original tightly closed container when not in use. Store in a cool, dry, well ventilated area away from heat or open flame. Moisture may decompose this product and cause a violent reaction leading to fire and explosion. In case of decomposition, isolate container if possible and flood area with large amounts of water to dissolve all material before discarding this container. Do not contaminate food or feed by storage or disposal. **CONTAINER DISPOSAL:** Non-refillable container. Do not reuse or refill this container. Offer for recycling, if available. Triple rinse container (or equivalent) promptly after emptying.]

{Storage and Disposal instructions for toilet bowl tablets}

[STORAGE AND DISPOSAL: Store in a cool dry place. Do not open package until ready to use. Keep away from children. **CONTAINER DISPOSAL:** Non-refillable container. Do not reuse or refill this container. Offer for recycling, if available. Triple rinse container (or equivalent) promptly after emptying.]

{Storage and Disposal instructions for institutional and industrial applications}

[STORAGE: Keep this product dry in original tightly closed container when not in use. Store in a cool, dry, well ventilated area away from heat or open flame. Moisture may decompose this product and cause a violent reaction leading to fire and explosion. In case of decomposition, isolate container if possible and flood area with large amounts of water to dissolve all material before discarding this container. Do not contaminate food or feed by storage or disposal.]

CONTAINER DISPOSAL: Non-refillable container. Do not reuse or refill this container. Offer for recycling, if available. Triple rinse container (or equivalent) promptly after emptying.

{Triple Rinse statement for end-use products in containers of less than 50 pounds (solid).}

[Triple rinse as follows: Empty the remaining contents into application equipment or a mix tank. Fill the container ¼ full with water and recap. Shake for 10 seconds. Pour rinsate into application equipment or a mix tank or store rinsate for later use or disposal. Drain for 10 seconds after the flow begins to drip. Repeat this procedure two more times.]

{Triple Rinse statement for end-use products in containers of equal to or greater than 50 pounds (solid).}

[Triple rinse as follows: Empty the remaining contents into application equipment or a mix tank. Fill the container ¼ full with water. Replace and tighten closures. Tip container on its side and roll it back and forth, ensuring at least one complete revolution, for 30 seconds. Stand the container on its end and tip it back and forth several times. Turn the container over onto its other end and tip it back and forth several times. Empty the rinsate into application equipment or a mix tank or store rinsate for later use or disposal. Repeat this procedure two more times.]

PRECAUTIONARY STATEMENTS:

HAZARDS TO HUMANS AND DOMESTIC ANIMALS: DANGER: Highly corrosive. Causes skin and eye damage. May be fatal if swallowed. Do not get in eyes, on skin or on clothing. Wear goggles or safety glasses and rubber gloves when handling this product. Irritating to nose and throat. Avoid breathing dust and fumes. Remove and wash contaminated clothing before reuse.

{First Aid will be separated by rule lines from adjacent text and be in a different color.}

FIRST AID: IF IN EYES: Hold eye open and rinse slowly and gently with water for 15-20 minutes. Remove contact lenses, if present, after the first 5 minutes, then continue rinsing eye. Call a poison control center or doctor for treatment advice. **IF ON SKIN OR CLOTHING:** Take off contaminated clothing. Rinse skin immediately with plenty of water for 15-20 minutes. Call a poison control center or doctor for treatment advice. **IF INHALED:** Move person to fresh air. If person is not breathing, call 911 or an ambulance, then give artificial respiration, preferably mouth-to-mouth, if possible. Call poison control center or doctor for treatment advice. **IF SWALLOWED:** Call poison control center or doctor immediately for treatment advice. Have person sip a glass of water if able to swallow. Do not induce vomiting unless told to do so by the poison control center or doctor. Do not give anything by mouth to an unconscious person.

Have the product container or label with you when calling a poison control center or doctor, or going for treatment. [IN CASE OF MEDICAL EMERGENCY, CALL [1-303-623-5716] [1-877-800-5553] [telephone number supplied by supplemental registrant].]

Note to Physician: Probable mucosal damage may contraindicate the use of gastric lavage.

{Physical or chemical hazard instructions for toilet bowl tablets}

[PHYSICAL OR CHEMICAL HAZARDS: STRONG OXIDIZING AGENT: Do not mix with other chemicals. Do not use with other cleaning or household chemicals including acids and ammonia.]

{Physical or chemical hazard instructions for all other products}

[PHYSICAL OR CHEMICAL HAZARDS: STRONG OXIDIZING AGENT: Do not mix with other chemicals. Mix only with water. Never add water to product. Always add product to large quantities of water. When using automatic feeding devices, always follow manufacturer's directions as to the proper addition of sanitizer product to chlorinators. Use clean dry utensils. Do not add this product to any dispensing device containing remnants of any other product. Such use may cause a violent reaction leading to fire or explosion. Contamination with moisture, organic matter or other chemicals will start a chemical reaction and generate heat, hazardous gas, possible fire and explosion. In case of contamination or decomposition, do not reseal container. If possible, isolate container in open air or well ventilated area. Flood area with large volumes of water.]

{Environmental hazards statement for end-use products in containers of less than 5 gallons (liquid) or less than 50 pounds (solid, dry weight).}

[ENVIRONMENTAL HAZARDS: This pesticide is toxic to fish and aquatic organisms.]

{Environmental hazards statement for end-use products in containers of equal to or greater than 5 gallons (liquid) or equal to or greater than 50 pounds (solid, dry weight).}

[ENVIRONMENTAL HAZARDS: This pesticide is toxic to fish and aquatic organisms. Do not discharge effluent containing this product into lakes, streams, ponds, estuaries, oceans or other waters unless in accordance with the requirements of a National Pollutant Discharge Elimination System (NPDES) permit and the permitting authority has been notified in writing prior to discharge. Do not discharge effluent containing this product to sewer systems without previously notifying the local

sewage treatment plant authority. For guidance contact your State Water Board or Regional Office of the EPA.]

[NOTE: Buyer assumes all responsibility for safety and use not in accordance with directions.]

[NOTE: User assumes all responsibility for use not in accordance with directions.]

{The following is optional text to be used at BioLab's discretion with swimming pool use directions. This information is non-essential and will be provided only as a courtesy. Will not appear on all swimming pool products.}

HOW TO CALCULATE POOL CAPACITY

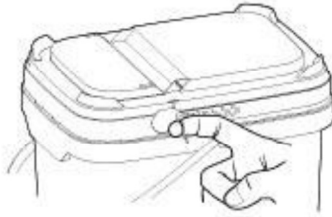
Shape of Pool Gallons of water

- Rectangular Average depth x average length x average width x 7.5
- Circular Diameter x diameter x average depth x 5.9
- Oval Full width x full length x average depth x 5.9
- Irregular Consult pool builder

{Three graphics below on this page are new:}

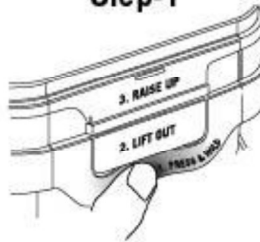


Tamper Evident Tear Strip
Tear away by using "ring pull" on either side of lid

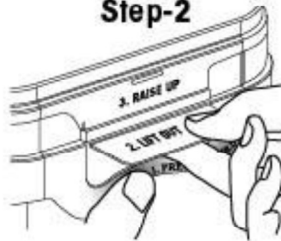


To open the lid (after the tear strip is removed)

Step-1



Step-2



Step-3

