

7/10/69

R220 157227090-92044

TYPE

CAUTION INFORMATION

EXTREMELY FLAMMABLE

-Do not spray near heat, sparks, or open flame. Do not smoke while using.

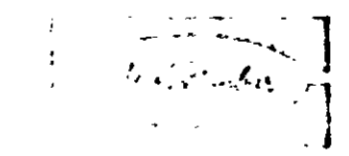
CONTENTS UNDER PRESSURE

-Do not puncture, do not store at temperatures exceeding 120° F., and do not incinerate.

AVOID PROLONGED OR REPEATED BREATHING OF MIST-Use only in a well ventilated room.

HARMFUL IF SWALLOWED, AVOID PROLONGED OR REPEATED CONTACT WITH SKIN-Do not spray on skin, on animals, or near fish bowls, as this may cause toxic symptoms. Wash hands and exposed skin areas after using. Avoid contamination of food and cooking utensils.

U.S.D.A. Reg. No. 5075-8



GUARANTEE: Your money back with a refund if you are not satisfied with this item.

THE JETCO COMPANY, INC.
1000 N. W. 10th St., Miami, Fla. 33136



May-14-1969
UNDER THE FEDERAL INSECTICIDE AND RODENTICIDE ACT AND REGULATIONS THEREUNDER. ECONOMIC POISON REGISTERED UNDER NO. 5075-8.

**JETCO
ANT AND ROACH SPRAY
KILLS MANY CRAWLING INSECTS**

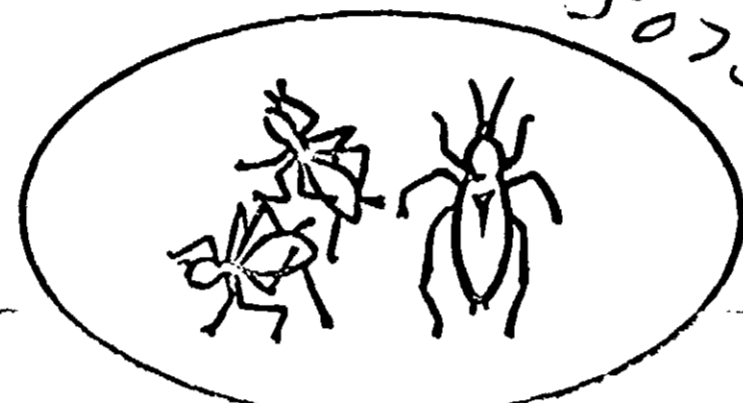
Kills ants, roaches, waterbugs, spiders, silverfish, and many other crawling insects. Spray areas where insects enter and hide. Non-staining when used as directed.

DIRECTIONS

Hold can 6-12 inches from area to be sprayed and point nozzle away from you. Spray until surfaces are WET to touch. Apply in the home as spot treatments only.

- 1. Ants:** Thoroughly spray ant tracks, ant hills, cracks, crevices, window and door sills where ants may enter.
- 2. Roaches, Waterbugs, Silverfish, Spiders, and Crickets:** Direct spray into cracks and crevices, under sinks, along baseboards, basement corners and other hard-to-get-to places where insects may be hiding.
- 3. Carpet Beetles:** Spray infested areas of floor covering, baseboards, cracks in flooring, behind shelving, bookcases and other storage areas.
- 4. Brown Dog Tick:** Spray cracks, crevices and area where pets frequently lie. Fresh bedding should be placed in animal quarters after treatment. Do not spray animals, birds, or near fish bowls.
- 5. Flies, Mosquitoes, Wasps and Flying Ants (Outdoors):** Spray outside surfaces of screens, doors, around light fixtures, on porches, patios and other places where these insects light or congregate.

DO NOT USE AS A SPACE SPRAY. DO NOT SPRAY ON WALLPAPER, PAPER, AND VINYL OR MARBLE TILE.



ANT AND ROACH SPRAY

Spot spray

KILLS ANTS AND ROACHES
AND MANY OTHER CRAWLING INSECTS

NOTE: QUANTITIES ARE COSTLY. For more information, contact your local distributor or write to The Jetco Company, Inc., 1000 N. W. 10th St., Miami, Fla. 33136.

