

LEFT SIDE PANEL CONTINUED & RIGHT SIDE BEGINS WHEREVER APPROPRIATE

ASPARAGUS: Asparagus beetle, thrip. Diseases-rust. Apply only on asparagus ferns after spears have been harvested.

BEANS: Aphids, bean leaf beetle, Mexican bean beetle, cucumber beetle, flea beetle, Japanese beetle, leafhopper, velvet bean caterpillar, western bean cutworm, armyworm, corn earworm, stink bug, tarnished plant bug, lygus bug, spider mite. Diseases-anthrachnose, rust, downy mildew.

CABBAGE, BROCCOLI, BRUSSELS SPROUTS, CAULIFLOWER: Aphids, flea beetle, harlequin bug, armyworm, cabbage looper, imported cabbage worm. Diseases-downy mildew, alternaria leaf spot.

CUCUMBER, MELONS, SQUASH, PUMPKIN: Aphids, cucumber beetle, flea beetle, leafhopper, melonworm, pickleworm, squash bug, spider mite. Diseases-downy mildew, alternaria blight, anthracnose, gummy stem blight.

TOMATO, EGGPLANT, PEPPER, PEAS: Aphids, tomato fruit worm, tomato hornworm, flea beetle, grasshopper, leafhopper, European corn borer, fall armyworm, lace bug, tarnished plant bug, stink bug, spider mite, pea weevil. Diseases-early and late blight, anthracnose, *Emphyllium* and septoria leaf spots, *cladosporium* grey mold.

LETTUCE, CARROTS, BEETS, KALE, SPINACH, TURNIPS: Aphids, flea beetle, leafhoppers, cabbage looper, imported cabbage worm, harlequin bug, armyworm, corn earworm, spittlebug, tarnished plant bug, stink bug, grasshopper, Japanese beetle. Diseases-downy mildew, leaf spot *cercospora* leaf spot.

This container is sold by weight and not by volume. If it does not appear full when opened, it is because contents have settled during shipping.

NOTICE: Buyer assumes all risks of use, storage or handling of this material not in strict accordance with directions given herewith.

Manufactured by  
GOOD-LIFE, INC.  
GOOD-LIFE Drive  
P.O. Box 687  
Effingham, IL 62401

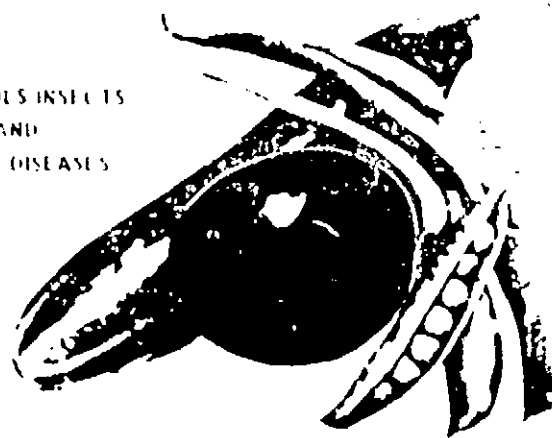
NET CONTENTS \_\_\_\_\_

FRONT PANEL

GOOD-LIFE(R)

VEGETABLE and TOMATO DUST or SPRAY

CONTROLS INSECTS  
AND  
PLANT DISEASES



ACCEPTED  
JUN 21 1983  
U.S. DEPT. OF AGRICULTURE  
WASHINGTON, D.C.

ACTIVE INGREDIENTS:

*Malathion .....	4.00%
Carbaryl (1-Naphthyl N-methylcarbamate) .....	3.00%
Zineb (Zinc ethylene bisdithiocarbamate) .....	3.90%
INERT INGREDIENTS .....	89.10%
TOTAL .....	100.00%

\*O,O-Dimethyl dithiophosphate of diethyl mercaptosuccinate

KEEP OUT OF THE REACH OF CHILDREN

**WARNING**

See side and back panels for  
additional precautionary  
statements.

EPA REG. NO. 4931-125  
EPA EST. NO. 4931-11-1

LEFT SIDE PANEL

PRECAUTIONARY STATEMENTS

Hazards to Humans & Domestic Animals:

**WARNING:** Harmful if inhaled or swallowed. Do not breath dust. Do not take internally. Skin contact may be harmful. Avoid contact. Wash hands before eating. Take shower or bath after work. Use protective clothing (long pants, long sleeve shirts, gloves and boots) during mixing and loading. Do not feed treated foliage, fruit or pods to dairy animals or animals being finished for slaughter.

Statement of Practical Treatment

**IF SWALLOWED:** Call a physician or Poison Control Center. Drink 1 or 2 glasses of water and induce vomiting by touching back of throat with finger. Do not induce vomiting or give anything by mouth to an unconscious person.

**NOTE TO PHYSICIAN:** Carbaryl is a moderate, reversible cholinesterase inhibitor Atropine is antidotal for carbaryl and malathion.

Environmental Hazards

Toxic to fish; keep out of any body of water. Use only as specified on this label. This product is highly toxic to bees exposed to direct treatment or residues on crops. Protective information may be obtained from your Cooperative Agricultural Extension Service.

DIRECTIONS FOR USE

It is a violation of federal law to use this product in a manner inconsistent with its labeling.

**STORAGE AND DISPOSAL**

Do not reuse empty container. Wrap container and put in trash collection.

HOW TO USE

GOOD-LIFE VEGETABLE AND TOMATO DUST OR SPRAY

This product may be used as either a Dust or Spray

Apply thoroughly to upper and lower surfaces of all foliage. Protect plants from early insect and disease damage. Repeat at 7 day intervals or as necessary. DO NOT APPLY WITHIN 14 DAYS OF HARVEST

**FOR COMMERCIAL APPLICATORS** - Apply as a dust at the rate of 25 to 35 pounds per acre; as a spray, mix 25 to 35 pounds in 50 to 70 gallons water per acre. Provide continuous, vigorous agitation.

**DUST:** Dust on plants covering leaves evenly and lightly. Apply when air is still and plants are dry. Best coverage is obtained by use of a good dust gun.

**SPRAY:** Mix 4 ounces (12 tablespoonsful) in 1½ gallons of water. Keep agitated while spraying. Apply as a wetting mist with either a pressure or hand type sprayer.