

Cameraman's Note

Poor Copy

[4931-117]

DIRECTIONS

Should be applied as a mist. Use good hand contact on spray.

DAIRY COWS, CATTLE, HORSES and MULES.

Cows should be sprayed before milking. Horses and mules should be sprayed lightly before leaving the stable. Care should be taken to spray all parts of the animal with the exception of the udder and eye regions. Apply 1 to 2 ounces of GOOD-LIFE DAIRY COW SPRAY to each adult animal, taking care not to soak the skin or hide.

CHICKEN MITES

Spray roost, nest and walls, paying particular attention to all cracks, crevices and other hiding places. Thorough cleaning before spraying will help in controlling mites. Repeat application daily until infestation is controlled.

FLIES

For fly control in barns, stables and milkrooms, close all doors and windows and spray toward ceiling until the area is filled with a fine mist - keep openings closed for 10 to 15 minutes.

FLEAS

To control fleas on adult dogs, spray lightly, taking care not to soak skin or hide. Spray thoroughly sleeping quarters and other places where the infested dogs stay. Repeat as necessary. **DO NOT USE ON YOUNG ANIMALS.**

CAUTION

Harmful if swallowed. Keep out of reach of children

Do not spray directly over milking pails or other milking equipment. Avoid inhalation. Do not contaminate feed, milk, milk handling equipment or drinking water.

Do not reuse empty container. Destroy it by perforating or crushing. Buy or discard in a safe place.

NOTICE

Buyer assumes all risks of use, storage or handling of this material except in strict accordance with directions given herewith.

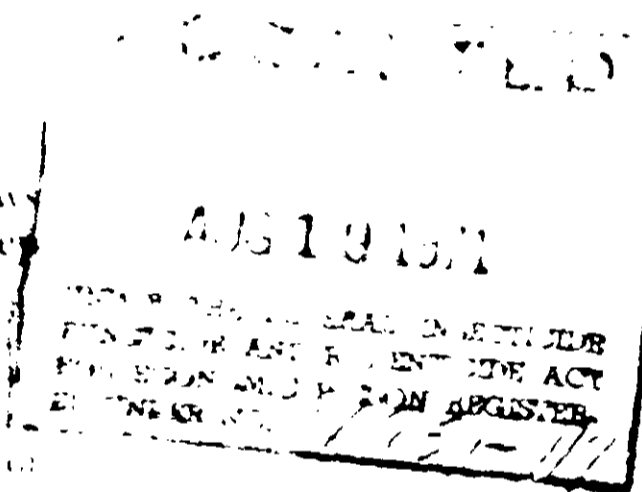
MANUFACTURED BY

GOOD-LIFE CHEMICALS, INC.
GOOD-LIFE DRIVE P. O. BOX 637
SPRINGFIELD, ILLINOIS 62701



DAIRY COW SPRAY

For control of House Flies, Stable or Barn Flies, Horn Flies, Fleas, Mosquitoes on Dairy Cows, Cattle, Horses, Mules, and Adult Dogs.
Should be used regularly to kill flies in barns, milkrooms, & poultry houses.



ACTIVE INGREDIENTS

Pyrethrins 0.040%
Pyrethrin Iutoxide technical 0.320%

INERT INGREDIENTS

Pyrethrin 99.640%

TOTAL

100.000%
Contains 1% of butylcarbitol (6-propylpiperonyl ether and other esters).

CAUTION

KEEP OUT OF REACH OF CHILDREN

SEE OTHER CAUTIONS ON BACK PANEL
DO NOT USE, POUR, SPILL OR STORE NEAR
HEAT OR OPEN FLAME

U.S.D.A. Reg. No. 493117

Net Contents 1 Gallon