

GOOD LIFE CHEMICALS, INC.  
P.O. BOX 687  
EFFINGHAM, ILLINOIS 62401

GOOD-LIFE DORMANT OIL SPRAY contains 0.15 pounds Ethion per gallon. Petroleum oil specification- Unsulfonated Residue 92-94%. Viscosity-70 seconds.

**DIRECTIONS:**

Fill spray container about 1/2 full of water. Add the DORMANT SPRAY-shake and mix thoroughly. Then add the rest of the water.

Use 5 tablespoonful **DORMANT OIL SPRAY** per gallon water and apply early spring before leaves emerge. Do not apply during freezing weather.

**Apple Trees:** For control of European Red Mite, San Jose Scale.

**Cherry Trees: European Red Mite, San Jose Scale.**

Peach, Pear, Plum, Prune Trees: San Jose Scale, European Red Mite.  
Paralotaria (Olive) Scale.

Effective against the over-wintering eggs of the following aphids: Apple Aphid, Rosy Apple Aphid, Black Cherry Aphid, Mealy Plum Aphid, Leaf Curl Plum Aphid.

**Ornamentals:** For evergreen ornamentals, use 5 tablespoons **DORMANT SPRAY** per gallon of water. For deciduous ornamentals, use 10 tablespoons **DORMANT SPRAY** per gallon of water. Controls soft scales, scale, and spider mites. **Ornamentals:** Magnolia, Tulip, Dogwood, Camellia, Maple, European Holly, Elm, Red and White Birch, American Sycamore, Japanese Cedar, Shell, Spruce, Juniper, Yew, Norway Spruce, Fir, and Larch. For the following ornamentals:

<b>Taxus</b>	<b>Elm</b>	<b>Ash</b>	<b>Eunonymus</b>
<b>Arbervita</b>	<b>Catalpa</b>	<b>Poplar</b>	<b>Pine</b>
<b>Magnolia</b>	<b>Boxwood</b>	<b>Birch</b>	<b>Juniper</b>
<b>Tulip Tree</b>	<b>Privet</b>	<b>Willow</b>	<b>Mock Orange</b>
<b>Maple</b>	<b>Oak</b>	<b>Dogwood</b>	<b>Lilac</b>

- Apply after most danger of freezing nights has passed but **BEFORE** buds have begun to open. Spray on a clear mild day after noon-Do **Not** spray late in the day.



# DORMANT OIL SPRAY

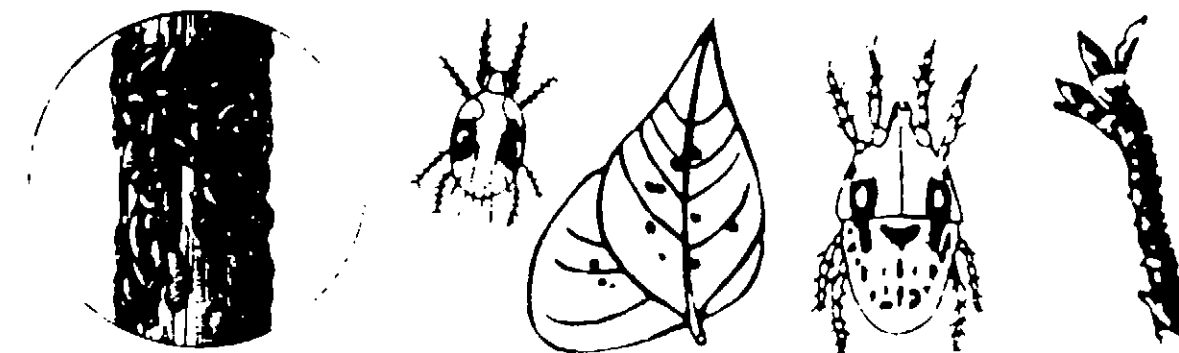
CONTAINS ETHION \*

## WARNING

KEEP OUT OF REACH OF CHILDREN

See Other Warnings On Back Panel

### FOR CONTROL OF SCALE - MITES



**ACTIVE INGREDIENTS:**

*Ethion (O,O'-Tetraethyl S,S'-methylene bisphosphorodithioate)	2.00%
Petroleum Oil (Superior Type Oil)	94.00%
INERT INGREDIENTS	4.00%

\*U S Pat No 2,873,228

TOTAL

100 90'

USDA Reg No 1931-94

NET CONTENT 1 QUART

buds have begun to open. Spray on a clear mild day after noon-Do  
Not spray late in the day.

USDA Reg. No. 4931-94  
NET CONTENT 1 QUART

ACCEPTED

4931-94

**CAUTION:**

Harmful if swallowed. May be absorbed through the skin. Avoid breathing the spray vapor or mist. Avoid contact with eyes, skin or clothing. Wash thoroughly after handling. Avoid storing near feed or food products. May be injurious to resident birds. Do not contaminate any waters containing fish by direct application or cleaning of spray equipment.

Do not use unless water makes a smooth milky emulsion with this product and keep the mixture agitated by vigorous shaking of spray container. Use at once when mixed.

**CAUTION:**

Do not apply DORMANT OIL SPRAY on Sugar Maple, Japanese Maple, Beech, Hickory, Walnut, Butternut, Douglas Fir or Colorado Blue Spruce.

**NOTICE:**

Seller makes no warranty, expressed or implied, concerning the use of this product other than indicated on the label. Buyer assumes all risk of use and/or handling of this material when such use and/or handling is contrary to label instructions.

Manufactured For

**GOOD-LIFE CHEMICALS, INC.**

Good-Life Drive P. O. Box 607

EFFINGHAM, ILLINOIS 62401

U.S. Reg. No. 4931-94

GOOD-LIFE CHEMICALS, INC.  
P. O. BOX 687  
EFFINGHAM, ILLINOIS 62401

GOOD-LIFE DORMANT OIL SPRAY contains 0.15 pounds Ethion per gallon. Petroleum oil specification- Unsulfonated Residue 92-94%. Viscosity-70 seconds.

**DIRECTIONS:**

Fill spray container about  $\frac{1}{2}$  full of water. Add the DORMANT SPRAY-shake and mix thoroughly. Then add the rest of the water.

Use 5 tablespoonsful DORMANT OIL SPRAY per gallon water and apply early spring before leaves emerge. Do not apply during freezing weather.

Apple Trees: For control of European Red Mite, San Jose Scale.

Cherry Trees: European Red Mite, San Jose Scale.

Peach, Pear, Plum, Prune Trees: San Jose Scale, European Red Mite, Paratortrix (Olive) Scale.

Effective against the over-wintering eggs of the following aphids-Apple Aphid, Rosy Apple Aphid, Black Cherry Aphid, Mealy Plum Aphid, Leaf Curl Plum Aphid.

Ornamentals: For evergreen ornamentals, use 5 tablespoons DORMANT SPRAY per gallon water. For deciduous ornamentals such as Lilac, etc., use 8 tablespoons DORMANT SPRAY per gallon water. Controls soft scales such as Lecanium, Magnolia, Tulip Tree, Cottony Maple, European Elm, European Fruit-Hard or Armoured Scales such as Oyster Shell, Scurfy, San Jose, Pine Needle, Juniper and Euonymus on the following ornamentals:

<u>Taxus</u>	<u>Elm</u>	<u>Ash</u>	<u>Euonymus</u>
<u>Arborvitae</u>	<u>Catalpa</u>	<u>Poplar</u>	<u>Pine</u>
<u>Magnolia</u>	<u>Boxwood</u>	<u>Birch</u>	<u>Juniper</u>
<u>Tulip Tree</u>	<u>Privet</u>	<u>Willow</u>	<u>Mock Orange</u>
<u>Maple</u>	<u>Oak</u>	<u>Dogwood</u>	<u>Lilac</u>

Apply after most danger of freezing nights has passed but BEFORE buds have begun to open. Spray on a clear mild day after noon-Do Not spray late in the day.

ACCEPTED

4931-94

**CAUTION:**

Harmful if swallowed. May be absorbed through the skin. Avoid breathing the spray vapor or mist. Avoid contact with eyes, skin or clothing. Wash thoroughly after handling. Avoid storing near feed or food products. May be injurious to resident birds. Do not use near water.



## DORMANT OIL SPRAY

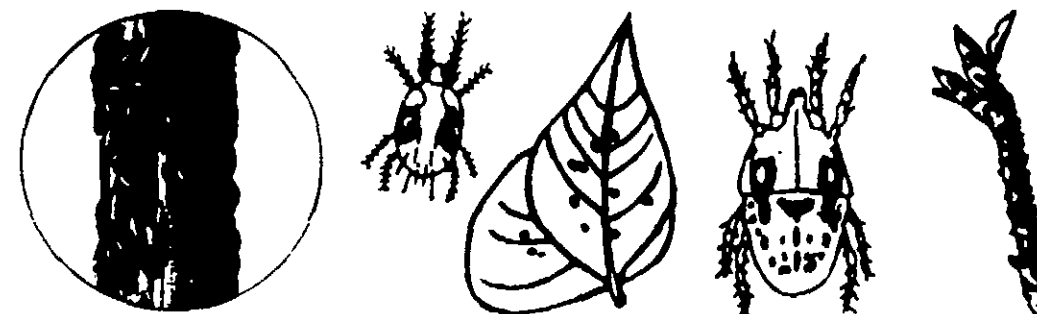
CONTAINS ETHION \*

### WARNING

KEEP OUT OF REACH OF CHILDREN

See Other Warnings On Back Panel

FOR CONTROL OF SCALE - MITES



**ACTIVE INGREDIENTS:**

\*Ethion (0,0,0',0'-Tetraethyl S,S'-methylene bisphosphorodithioate) 2.00%

Petroleum Oil (Superior Type Oil) 94.00%

INERT INGREDIENTS 4.00%

\*U.S. Pat. No. 2,873,228

TOTAL 100.00%

USDA Reg. No. 4931-94

NET CONTENT 1 QUART

SPRAY per gallon water. For deciduous ornamentals such as Magnolia, use 8 tablespoons DORMANT SPRAY per gallon water. Controls soft scales such as Lecanium, Magnolia, Tulip Tree, Cottony Maple, European Elm, European Fruit-Hard or Armoured Scales such as Oyster Shell, Scurfy, San Jose, Pine Needle, Juniper and Euonymus on the following ornamentals:

<u>Taxus</u>	<u>Elm</u>	<u>Ash</u>	<u>Euonymus</u>
<u>Arborvitae</u>	<u>Catalpa</u>	<u>Poplar</u>	<u>Pine</u>
<u>Magnolia</u>	<u>Boxwood</u>	<u>Birch</u>	<u>Juniper</u>
<u>Tulip Tree</u>	<u>Privet</u>	<u>Willow</u>	<u>Mock Orange</u>
<u>Maple</u>	<u>Oak</u>	<u>Dogwood</u>	<u>Lilac</u>

Apply after most danger of freezing nights has passed but BEFORE buds have begun to open. Spray on a clear mild day after noon-Do Not spray late in the day.

ACCEPTED

UNDER THE  
FEDERAL INSECTICIDE ACT  
FOR RECORD  
ED UNDER NO. 4931-94  
TO ATTACHED COPY

#### CAUTION:

Harmful if swallowed. May be absorbed through the skin. Avoid breathing the spray vapor or mist. Avoid contact with eyes, skin or clothing. Wash thoroughly after handling. Avoid storing near feed or food products. May be injurious to resident birds. Do not contaminate any waters containing fish by direct application or cleaning of spray equipment.

Do not use unless water makes a smooth milky emulsion with this product and keep the mixture agitated by vigorous shaking of spray container. Use at once when mixed.

#### CAUTION:

Do not apply DORMANT OIL SPRAY on Sugar Maple, Japanese Maple, Beech, Hickory, Walnut, Butternut, Douglas Fir or Colorado Blue Spruce.

#### NOTICE:

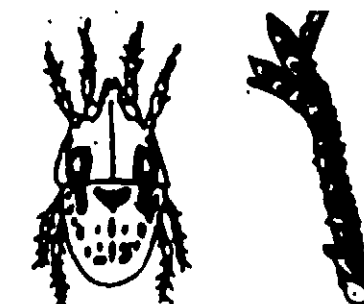
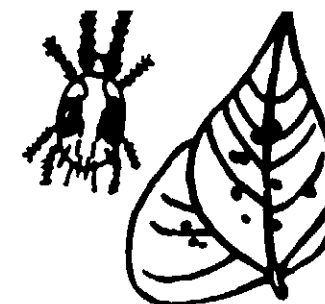
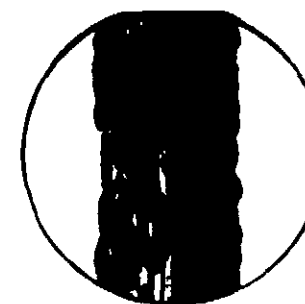
Seller makes no warranty, expressed or implied, concerning the use of this product other than indicated on the label. Buyer assumes all risk of use and/or handling of this material when such use and/or handling is contrary to label instructions.

Manufactured For

**GOOD-LIFE CHEMICALS, INC.**

GoodLife Drive P. O. Box 607

EFFINGHAM, ILLINOIS 62401



ACTIVE INGREDIENTS:	
*Ethion (O,O,O',O'-Tetraethyl S,S'-methylene bisphosphorodithioate)	2.00%
Petroleum Oil (Superior Type Oil)	94.00%
INERT INGREDIENTS	4.00%
*U.S. Pat. No. 2,873,228	TOTAL 100.00%

USDA Reg. No. 4931-94

NET CONTENT 1 QUART